

# FCC TEST REPORT

Client Name : Shenzhen Heqi Intelligent Technology Co.,Ltd  
Address : Room2601, J8, XingheWORLD F Building, No.1,  
YabaoRoad, NankengCommunity, BantianStreet,  
Longgang District, Shenzhen  
Product Name : Dash Camera  
Date : Oct. 19, 2021

**Shenzhen Anbotek Compliance Laboratory Limited**



# Contents

1. General Information.....	5
1.1. Client Information.....	5
1.2. Description of Device (EUT).....	5
1.3. Auxiliary Equipment Used During Test.....	6
1.4. Description of Test Modes.....	6
1.5. List of channels.....	7
1.6. Description Of Test Setup.....	8
1.7. Test Equipment List.....	9
1.8. Measurement Uncertainty.....	10
1.9. Description of Test Facility.....	10
2. Summary of Test Results.....	11
3. Conducted Emission Test.....	12
3.1. Test Standard and Limit.....	12
3.2. Test Setup.....	12
3.3. Test Procedure.....	12
4. Radiation Spurious Emission and Band Edge.....	13
4.1. Test Standard and Limit.....	13
4.2. Test Setup.....	13
4.3. Test Procedure.....	14
4.4. Test Data.....	15
5. Maximum Output Power Test.....	25
5.1. Test Standard and Limit.....	25
5.2. Test Setup.....	25
5.3. Test Procedure.....	25
5.4. Test Data.....	25
6. 6DB Occupy Bandwidth Test.....	26
6.1. Test Standard and Limit.....	26
6.2. Test Setup.....	26
6.3. Test Procedure.....	26
6.4. Test Data.....	26
7. Power Spectral Density Test.....	27
7.1. Test Standard and Limit.....	27
7.2. Test Setup.....	27
7.3. Test Procedure.....	27
7.4. Test Data.....	27
8. 100kHz Bandwidth of Frequency Band Edge Requirement.....	28
8.1. Test Standard and Limit.....	28
8.2. Test Setup.....	28

8.3. Test Procedure.....28

8.4. Test Data.....28

9. Antenna Requirement.....29

9.1. Test Standard and Requirement.....29

9.2. Antenna Connected Construction.....29

APPENDIX I -- TEST SETUP PHOTOGRAPH.....30

APPENDIX II -- EXTERNAL PHOTOGRAPH.....31

APPENDIX III -- INTERNAL PHOTOGRAPH.....35

APPENDIX IV -- Appendix Test Data.....41

# TEST REPORT

Applicant : Shenzhen Heqi Intelligent Technology Co.,Ltd  
Manufacturer : Shenzhen Heqi Intelligent Technology Co.,Ltd  
Product Name : Dash Camera  
Model No. : UOKIER DC02  
Trade Mark : UOKIER  
Rating(s) : DC/DC adapter input: DC 12-24V; Output: DC 5V, 1.5A  
Dash Camera Input: DC 5V, 1.5A (with DC 3.7V, 300mAh Battery inside)  
Test Standard(s) : **FCC Part15 Subpart C, Section 15.247**  
Test Method(s) : **ANSI C63.10: 2020, KDB 558074 D01 15.247 Meas Guidance v05r02**

The device described above is tested by Shenzhen Anbotek Compliance Laboratory Limited to determine the maximum emission levels emanating from the device and the severe levels of the device can endure and its performance criterion. The measurement results are contained in this test report and Shenzhen Anbotek Compliance Laboratory Limited is assumed full of responsibility for the accuracy and completeness of these measurements. Also, this report shows that the EUT (Equipment Under Test) is technically compliant with the FCC Part 15 Subpart C requirements.

This report applies to above tested sample only and shall not be reproduced in part without written approval of Shenzhen Anbotek Compliance Laboratory Limited.

Date of Receipt : Sept. 15, 2021  
Date of Test : Sept. 15~Oct. 14, 2021

Prepared by



(Ella Liang)

Approved & Authorized Signer



(Kingkong Jin)

# 1. General Information

## 1.1. Client Information

Applicant	:	Shenzhen Heqi Intelligent Technology Co.,Ltd
Address	:	Room2601, J8, XingheWORLD, Building, No.1, YabaoRoad, NankengCommunity, BantianStreet, Longgang District, Shenzhen
Manufacturer	:	Shenzhen Heqi Intelligent Technology Co.,Ltd
Address	:	Room2601, J8, XingheWORLD, Building, No.1, YabaoRoad, NankengCommunity, BantianStreet, Longgang District, Shenzhen
Factory	:	Shenzhen Heqi Intelligent Technology Co.,Ltd
Address	:	Room2601, J8, XingheWORLD, Building, No.1, YabaoRoad, NankengCommunity, BantianStreet, Longgang District, Shenzhen

## 1.2. Description of Device (EUT)

Product Name	:	Dash Camera	
Model No.	:	UOKIER DC02	
Trade Mark	:	UOKIER	
Test Power Supply	:	DC 12V By Lead-acid batteries	
Test Sample No.	:	1-2-1(Normal Sample), 1-2-2(Engineering Sample)	
Product Description	:	Operation Frequency:	802.11b/ g/ n(HT20): 2412-2462MHz 802.11n (HT40): 2422-2452MHz
	:	Number of Channel:	802.11b/ g/ n(HT20): 11 Channels 802.11n (HT40): 7 Channels
	:	Modulation Type:	CCK, DQPSK, DBPSK for DSSS; 64QAM, 16QAM, QPSK, BPSK for OFDM
	:	Antenna Type:	PIFA Antenna
	:	Antenna Gain(Peak):	2dBi (Provided by customer)
	:	Adapter:	N/A
<p><b>Remark:</b> 1) For a more detailed features description, please refer to the manufacturer's specifications or the User's Manual. 2) This report is for WIFI 2.4G module.</p>			

### 1.3. Auxiliary Equipment Used During Test

Lead-acid batteries	:	
---------------------	---	--

### 1.4. Description of Test Modes

To investigate the maximum EMI emission characteristics generates from EUT, the test system was pre-scanning tested base on the consideration of following EUT operation mode or test configuration mode which possible have effect on EMI emission level. Each of these EUT operation mode(s) or test configuration mode(s) mentioned above was evaluated respectively.

#### RADIATED EMISSION TEST (BELOW 1GHz):

Pre-Scan has been conducted to determine the worst-case mode from all possible combinations between available modulations, data rates, XYZ axis and antenna ports (if EUT with antenna diversity architecture).

Following channel(s) was (were) selected for the final test as listed below.

Mode	Available Channel	Test Channel	Modulation Tech.	Data Rate (Mbps)
802.11b	1 to 11	1, 6, 11	DSSS	1.0

For the test results, only the worst case was shown in test report.

#### RADIATED EMISSION TEST (ABOVE 1GHz):

Pre-Scan has been conducted to determine the worst-case mode from all possible combinations between available modulations, data rates, XYZ axis and antenna ports (if EUT with antenna diversity architecture).

Following channel(s) was (were) selected for the final test as listed below.

Mode	Available Channel	Test Channel	Modulation Tech.	Data Rate (Mbps)
802.11b	1 to 11	1, 6, 11	DSSS	1.0

#### POWER LINE CONDUCTED EMISSION TEST:

The EUT was tested with the following mode

Mode	Available Channel	Test Channel	Modulation Tech.	Data Rate (Mbps)
802.11b	1 to 11	1, 6, 11	DSSS	1.0
802.11g	1 to 11	1, 6, 11	OFDM	6.0
802.11n (HT20)	1 to 11	1, 6, 11	OFDM	6.5
802.11n (HT40)	3 to 9	3, 6, 9	OFDM	13.5

**BANDEDGE MEASUREMENT:**

Pre-Scan has been conducted to determine the worst-case mode from all possible combinations between available modulations, data rates and antenna ports (if EUT with antenna diversity architecture).

Following channel(s) was (were) selected for the final test as listed below.

Mode	Available Channel	Test Channel	Modulation Tech.	Data Rate (Mbps)
802.11b	1 to 11	1, 6, 11	DSSS	1.0
802.11g	1 to 11	1, 6, 11	OFDM	6.0
802.11n (HT20)	1 to 11	1, 6, 11	OFDM	6.5
802.11n (HT40)	3 to 9	3, 6, 9	OFDM	13.5

**ANTENNA PORT CONDUCTED MEASUREMENT:**

This item includes all value of each mode, but only includes spectrum plot of worst value of each mode.

Pre-Scan has been conducted to determine the worst-case mode from all possible combinations between available modulations, data rates and antenna ports (if EUT with antenna diversity architecture).

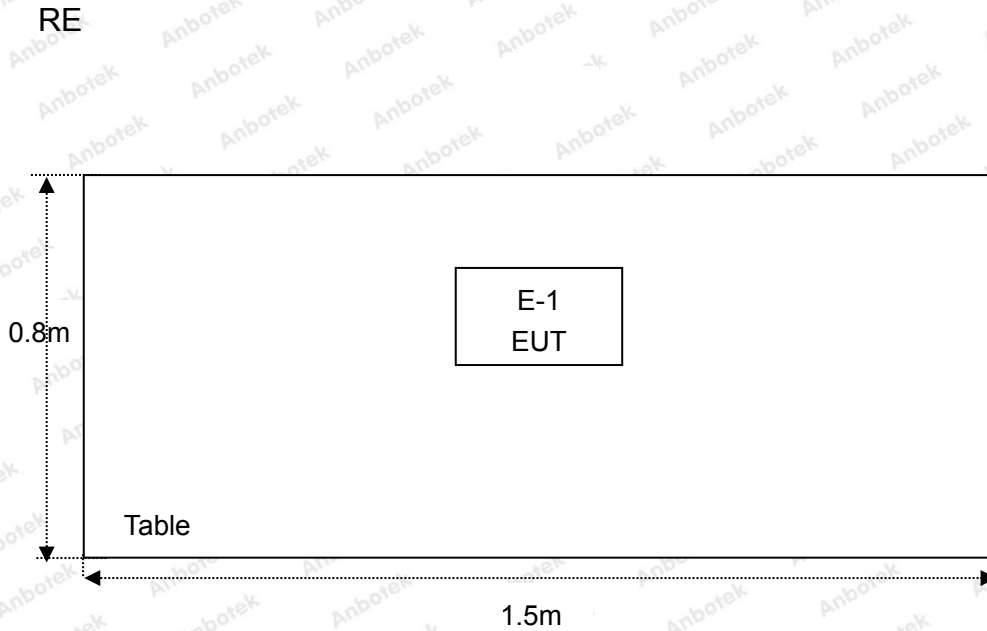
Following channel(s) was (were) selected for the final test as listed below.

Mode	Available Channel	Test Channel	Modulation Tech.	Data Rate (Mbps)
802.11b	1 to 11	1, 6, 11	DSSS	1.0
802.11g	1 to 11	1, 6, 11	OFDM	6.0
802.11n (HT20)	1 to 11	1, 6, 11	OFDM	6.5
802.11n (HT40)	3 to 9	3, 6, 9	OFDM	13.5

**1.5. List of channels**

Channel	Freq. (MHz)	Channel	Freq. (MHz)	Channel	Freq. (MHz)	Channel	Freq. (MHz)
01	2412	04	2427	07	2442	10	2457
02	2417	05	2432	08	2447	11	2462
03	2422	06	2437	09	2452		

### 1.6. Description Of Test Setup





## 1.7. Test Equipment List

Item	Equipment	Manufacturer	Model No.	Serial No.	Last Cal.	Cal. Interval
1.	L.I.S.N. Artificial Mains Network	Rohde & Schwarz	ENV216	100055	Oct. 26, 2020	1 Year
2.	EMI Test Receiver	Rohde & Schwarz	ESCI	100627	Oct. 26, 2020	1 Year
3.	EMI Test Receiver	Rohde & Schwarz	ESR26	101481	Oct. 26, 2020	1 Year
4.	RF Switching Unit	Compliance Direction	RSU-M2	38303	Oct. 26, 2020	1 Year
5.	MAX Spectrum Analysis	Agilent	N9020A	MY51170037	Oct. 26, 2020	1 Year
6.	Preamplifier	SKET Electronic	BK1G18G30 D	KD17503	Oct. 26, 2020	1 Year
7.	Double Ridged Horn Antenna	Instruments corporation	GTH-0118	351600	Nov. 02, 2020	2 Year
8.	Bilog Broadband Antenna	Schwarzbeck	VULB9163	VULB 9163-289	Nov. 02, 2020	2 Year
9.	Loop Antenna	Schwarzbeck	FMZB1519B	00053	Nov. 02, 2020	2 Year
10.	Horn Antenna	A-INFO	LB-180400- KF	J211060628	Nov. 02, 2020	2 Year
11.	Pre-amplifier	SONOMA	310N	186860	Oct. 26, 2020	1 Year
12.	EMI Test Software EZ-EMC	SHURPLE	N/A	N/A	N/A	N/A
13.	RF Test Control System	YIHENG	YH3000	2017430	Oct. 26, 2020	1 Year
14.	Power Sensor	DAER	RPR3006W	15100041SN045	Oct. 26, 2020	1 Year
15.	Power Sensor	DAER	RPR3006W	15100041SN046	Oct. 26, 2020	1 Year
16.	MXA Spectrum Analysis	Agilent	N9020A	MY51170037	Oct. 26, 2020	1 Year
17.	MXG RF Vector Signal Generator	Agilent	N5182A	MY48180656	Oct. 26, 2020	1 Year
18.	Signal Generator	Agilent	E4421B	MY41000743	Oct. 26, 2020	1 Year
19.	DC Power Supply	IVYTECH	IV3605	1804D360510	Oct. 26, 2020	1 Year
20.	Constant Temperature Humidity Chamber	ZHONGJIAN	ZJ-KHWS80 B	N/A	Oct. 26, 2020	1 Year

### 1.8. Measurement Uncertainty

Radiation Uncertainty	:	Ur = 3.9 dB (Horizontal)
		Ur = 3.8 dB (Vertical)
Conduction Uncertainty	:	Uc = 3.4 dB

### 1.9. Description of Test Facility

The test facility is recognized, certified, or accredited by the following organizations:

#### FCC-Registration No.: 184111

Shenzhen Anbotek Compliance Laboratory Limited, EMC Laboratory has been registered and fully described in a report filed with the (FCC) Federal Communications Commission. The acceptance letter from the FCC is maintained in our files. Registration No. 184111.

#### ISED-Registration No.: 8058A

Shenzhen Anbotek Compliance Laboratory Limited, EMC Laboratory has been registered and fully described in a report filed with the (ISED) Innovation, Science and Economic Development Canada. The acceptance letter from the ISED is maintained in our files. Registration 8058A.

#### Test Location

Shenzhen Anbotek Compliance Laboratory Limited.

1/F, Building D, Sogood Science and Technology Park, Sanwei community, Hangcheng Street, Bao'an District, Shenzhen, Guangdong, China.518102

## 2. Summary of Test Results

Standard Section	Test Item	Result
15.203/15.247(c)	Antenna Requirement	PASS
15.207	Conducted Emission	N/A
15.205/15.209	Spurious Emission	PASS
15.247(b)(3)	Conducted Peak Output Power	PASS
15.247(a)(2)	6dB Occupied Bandwidth	PASS
15.247(e)	Power Spectral Density	PASS
15.247(d)	Band Edge	PASS
<b>Remark:</b> "N/A" is an abbreviation for Not Applicable.		

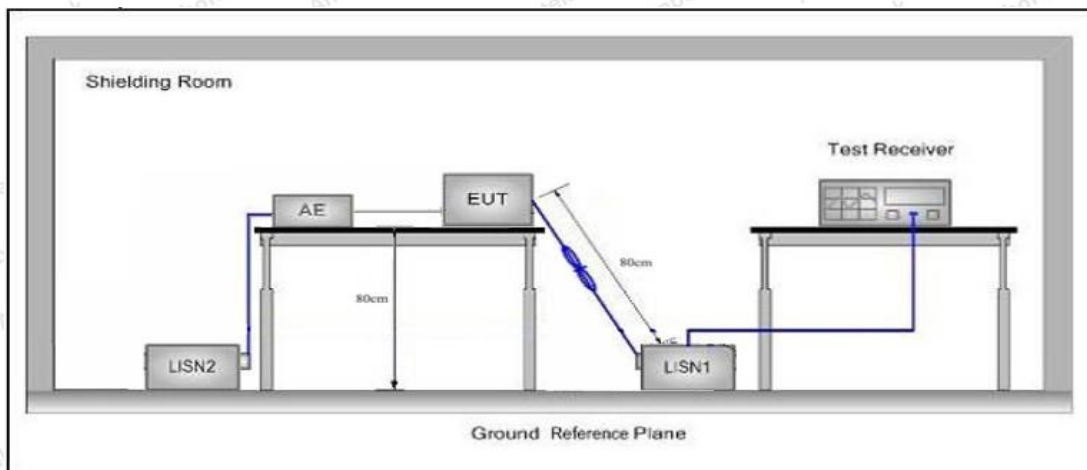
## 3. Conducted Emission Test

### 3.1. Test Standard and Limit

Test Standard	FCC Part15 Section 15.207		
Test Limit	Frequency	Maximum RF Line Voltage (dBuV)	
		Quasi-peak Level	Average Level
	150kHz~500kHz	66 ~ 56 *	56 ~ 46 *
	500kHz~5MHz	56	46
5MHz~30MHz	60	50	

**Remark:** (1) \*Decreasing linearly with logarithm of the frequency.  
(2) The lower limit shall apply at the transition frequency.

### 3.2. Test Setup



### 3.3. Test Procedure

The EUT system is connected to the power mains through a line impedance stabilization network (L.I.S.N.). This provides a 50ohm coupling impedance for the EUT system. Please refer the block diagram of the test setup and photographs. Both sides of AC line are checked to find out the maximum conducted emission. In order to find the maximum emission levels, the relative positions of equipment and all of the interface cables shall be changed according to FCC ANSI C63.10: 2020 on Conducted Emission Measurement.

The bandwidth of test receiver (ESCI) set at 9kHz.

The frequency range from 150kHz to 30MHz is checked.

### 3.4. Test Data

Not applicable.

This device is a Dash Camera, which is intended to be installed on a vehicle only, not connect to the public utility under normal use.15.207 test is exempted.

## 4. Radiation Spurious Emission and Band Edge

### 4.1. Test Standard and Limit

Test Standard	FCC Part15 C Section 15.209 and 15.205				
Test Limit	Frequency (MHz)	Field strength (microvolt/meter)	Limit (dBuV/m)	Remark	Measurement distance (m)
	0.009MHz~0.490MHz	2400/F(kHz)	-	-	300
	0.490MHz-1.705MHz	24000/F(kHz)	-	-	30
	1.705MHz-30MHz	30	-	-	30
	30MHz~88MHz	100	40.0	Quasi-peak	3
	88MHz~216MHz	150	43.5	Quasi-peak	3
	216MHz~960MHz	200	46.0	Quasi-peak	3
	960MHz~1000MHz	500	54.0	Quasi-peak	3
	Above 1000MHz	500	54.0	Average	3
-		74.0	Peak	3	

**Remark:**

(1)The lower limit shall apply at the transition frequency.

(2) 15.35(b), Unless otherwise specified, the limit on peak radio frequency emissions is 20dB above the maximum permitted average emission limit applicable to the equipment under test. This peak limit applies to the total peak emission level radiated by the device.

### 4.2. Test Setup

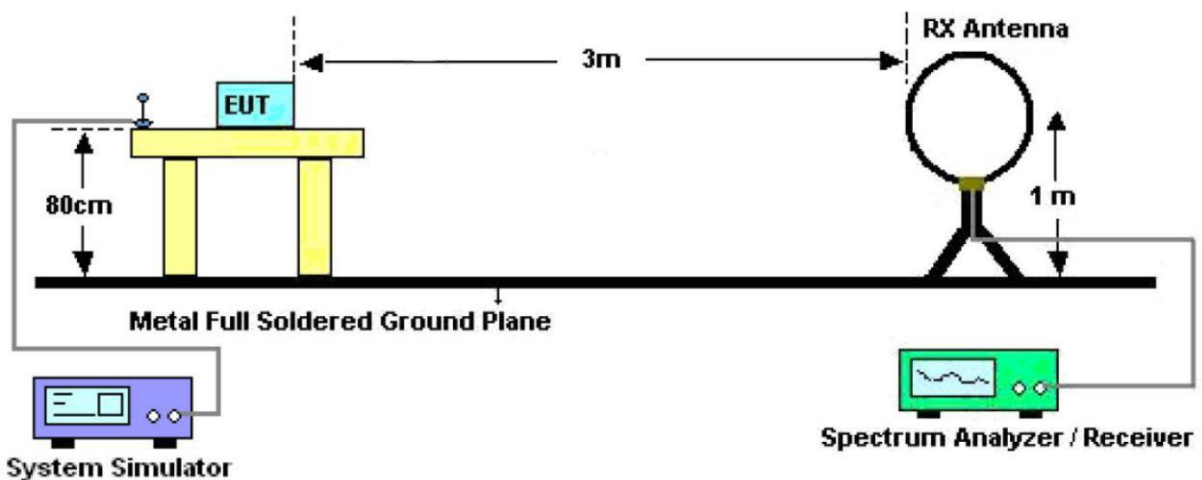


Figure 1. Below 30MHz

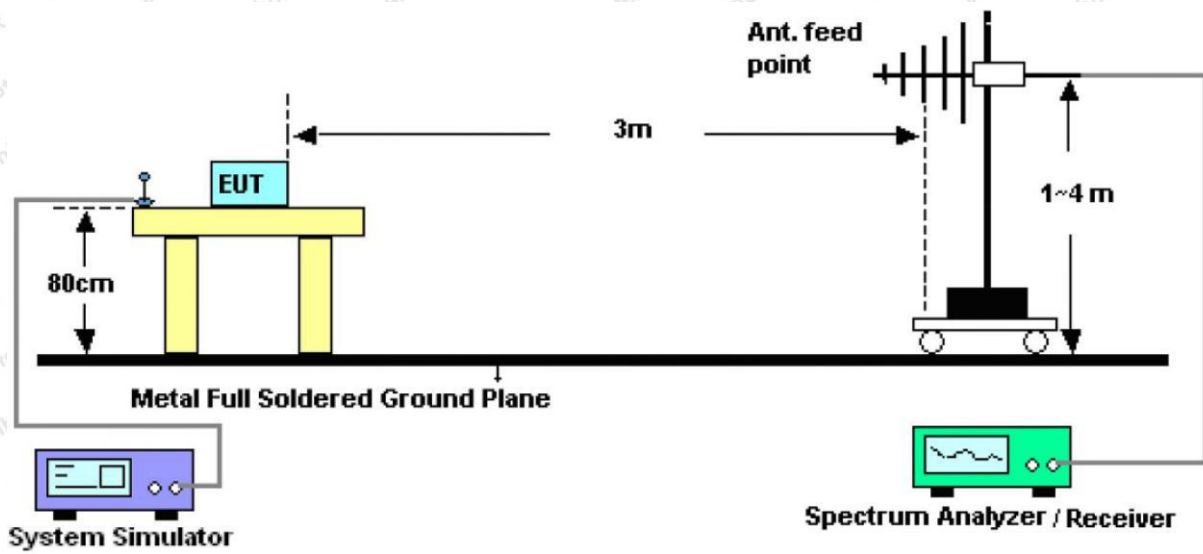


Figure 2. 30MHz to 1GHz

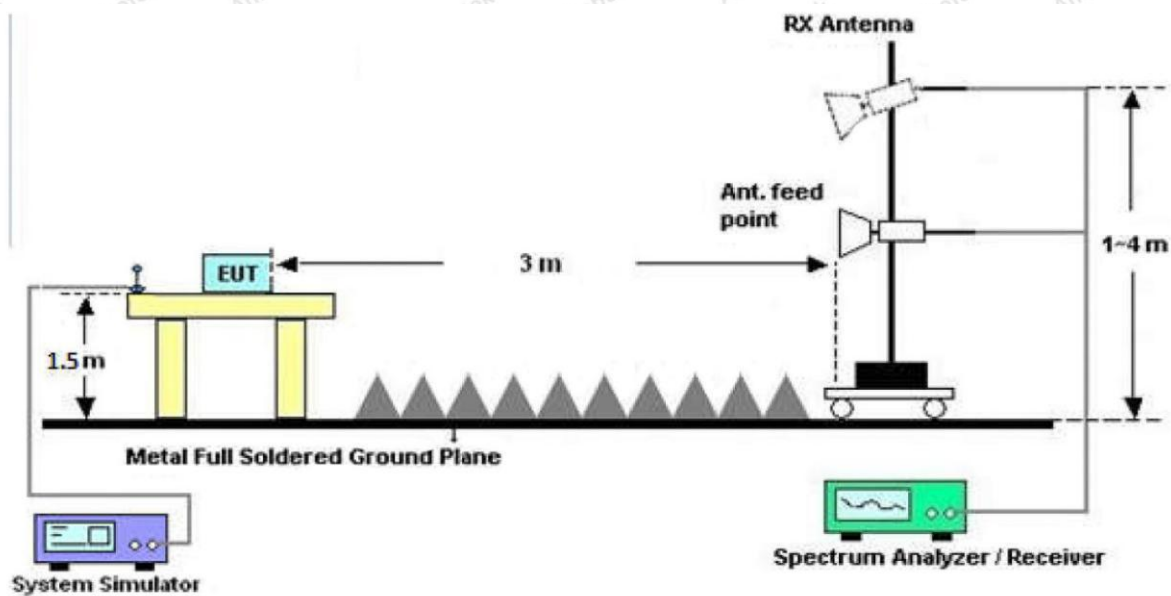


Figure 3. Above 1 GHz

### 4.3. Test Procedure

For below 1GHz: The EUT is placed on a turntable, which is 0.8m above the ground plane.

For above 1GHz: The EUT is placed on a turntable, which is 1.5m above the ground plane.

The turn table can rotate 360 degrees to determine the position of the maximum emission level. The EUT is set 3 meters away from the receiving antenna which is mounted on a antenna tower. The antenna can be moved up and down from 1 to 4 meters to find out the maximum emission level. Rotated the EUT through three orthogonal axes to determine the maximum emissions, both horizontal and vertical polarization of the antenna are set on test. The EUT is tested in 9\*6\*6 Chamber. The device is evaluated in xyz orientation.

For the radiated emission test above 1GHz:

Place the measurement antenna away from each area of the EUT determined to be a source of emissions at the specified measurement distance, while keeping the measurement antenna aimed at the source of emissions at each frequency of significant emissions, with polarization oriented for maximum response. The measurement antenna may have to be higher or lower than the EUT, depending on the radiation pattern of the emission and staying aimed at the emission source for receiving the maximum signal. The final measurement antenna elevation shall be that which maximizes the emissions. The measurement antenna elevation for maximum emissions shall be restricted to a range of heights of from 1 m to 4 m above the ground or reference ground plane.

For 9kHz to 150kHz, Set the spectrum analyzer as:

RBW = 200Hz, VBW = 1kHz, Detector= Quasi-Peak, Trace mode= Max hold, Sweep- auto couple.

For 150kHz to 30MHz, Set the spectrum analyzer as:

RBW = 9kHz, VBW = 30kHz, Detector= Quasi-Peak, Trace mode= Max hold, Sweep- auto couple.

For 30MHz to 1000MHz, Set the spectrum analyzer as:

RBW = 100kHz, VBW = 300kHz, Detector= Quasi-Peak, Trace mode= Max hold, Sweep- auto couple.

For above 1GHz, Set the spectrum analyzer as:

RBW = 1MHz, VBW = 1MHz, Detector= Peak, Trace mode= Max hold, Sweep- auto couple.

For average measurement:

-VBW=10Hz, When duty cycle is no less than 98 percent

-VBW  $\geq 1/T$ , when duty cycle is less than 98 percent where T is the minimum transmission duration over which the transmitter is on and is transmitting at its maximum power control level for the tested mode of operation, so refer to this clause 5.4 duty cycle.

#### 4.4. Test Data

##### PASS

During the test, Pre-scan all kind of the place mode (X-axis, Y-axis, Z-axis), and found the X-axis is the worst case.

The test results of 9kHz-30MHz was attenuated more than 20dB below the permissible limits, so the results don't record in the report.

During the test, pre-scan all modes, and found the 802.11b CH06 which is the worst case, only the worst case is recorded in the report.



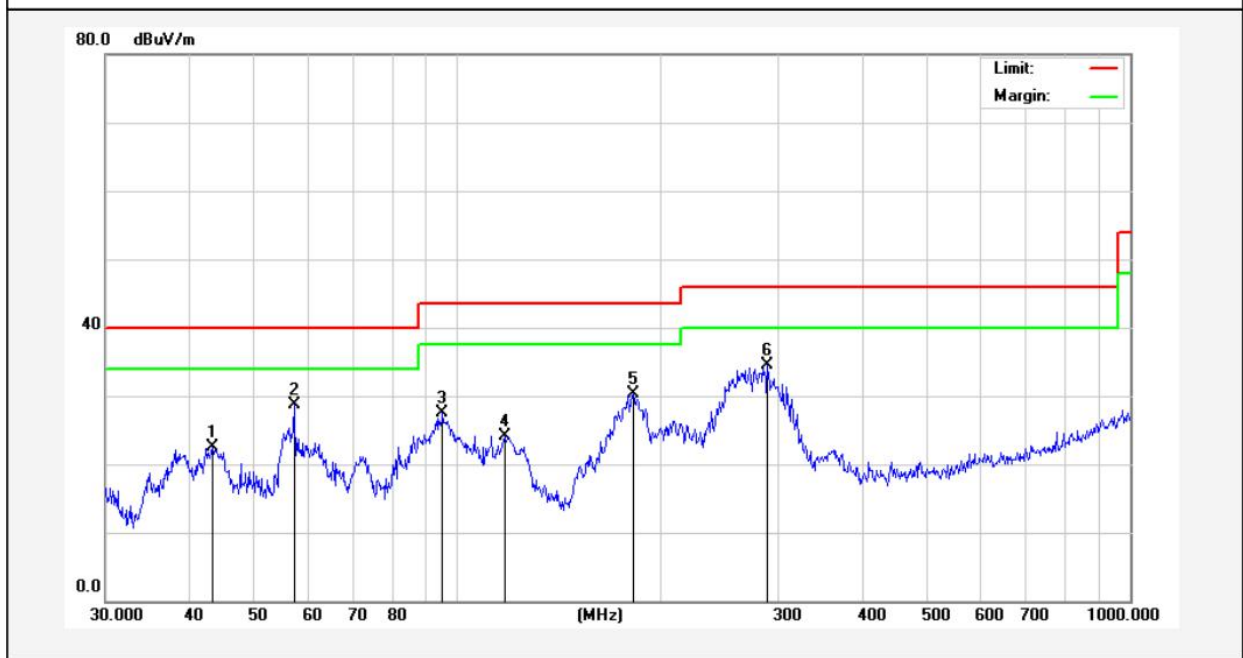
**Test Results (30~1000MHz)**

Test Mode: 802.11b CH06

Temp.(°C)/Hum.(%RH): 23.4°C/50%RH

Polarization: Horizontal

Power Source: DC 12V By Lead-acid batteries



No.	Freq. (MHz)	Reading (dBuV)	Factor (dB/m)	Result (dBuV/m)	Limit (dBuV/m)	Over Limit (dB)	Detector	Height (cm)	degree (deg)	Remark
1	43.3534	37.09	-14.52	22.57	40.00	-17.43	peak			
2	57.1914	45.13	-16.39	28.74	40.00	-11.26	peak			
3	95.0930	47.27	-19.85	27.42	43.50	-16.08	peak			
4	117.7725	45.94	-21.79	24.15	43.50	-19.35	peak			
5	182.5592	50.95	-20.71	30.24	43.50	-13.26	peak			
6	289.0021	49.89	-15.30	34.59	46.00	-11.41	peak			



**Test Results (30~1000MHz)**

Test Mode: 802.11b CH06

Temp.(°C)/Hum.(%RH): 23.4°C/50%RH

Polarization: Vertical

Power Source: DC 12V By Lead-acid batteries



No.	Freq. (MHz)	Reading (dBuV)	Factor (dB/m)	Result (dBuV/m)	Limit (dBuV/m)	Over Limit (dB)	Detector	Height (cm)	degree (deg)	Remark
1	43.6584	44.14	-13.96	30.18	40.00	-9.82	peak			
2	53.5052	46.07	-16.02	30.05	40.00	-9.95	peak			
3	84.1100	45.94	-16.98	28.96	40.00	-11.04	peak			
4	173.8135	49.13	-18.61	30.52	43.50	-12.98	peak			
5	315.4808	36.07	-12.96	23.11	46.00	-22.89	peak			
6	441.7426	39.79	-10.43	29.36	46.00	-16.64	peak			

**Test Results (Above 1000MHz)**

Test Mode: 802.11b Mode				Test channel: Lowest		
Peak value:						
Frequency (MHz)	Reading (dBuV)	Factor (dB/m)	Result (dBuV/m)	Limit Line (dBuV/m)	Over Limit (dB)	polarization
4824.00	27.10	15.31	42.41	74.00	-31.60	Vertical
7236.00	27.87	18.06	45.93	74.00	-28.07	Vertical
9648.00	28.60	23.77	52.37	74.00	-21.63	Vertical
12060.00	*			74.00		Vertical
14472.00	*			74.00		Vertical
4824.00	26.69	15.31	42.00	74.00	-32.00	Horizontal
7236.00	29.22	18.06	47.28	74.00	-26.72	Horizontal
9648.00	28.64	23.77	52.41	74.00	-21.60	Horizontal
12060.00	*			74.00		Horizontal
14472.00	*			74.00		Horizontal
Average value:						
Frequency (MHz)	Reading (dBuV)	Factor (dB/m)	Result (dBuV/m)	Limit Line (dBuV/m)	Over Limit (dB)	polarization
4824.00	18.18	15.31	33.49	54.00	-20.52	Vertical
7236.00	18.74	18.06	36.80	54.00	-17.20	Vertical
9648.00	18.95	23.77	42.72	54.00	-11.28	Vertical
12060.00	*			54.00		Vertical
14472.00	*			54.00		Vertical
4824.00	18.22	15.31	33.53	54.00	-20.47	Horizontal
7236.00	20.46	18.06	38.52	54.00	-15.48	Horizontal
9648.00	19.39	23.77	43.16	54.00	-10.85	Horizontal
12060.00	*			54.00		Horizontal
14472.00	*			54.00		Horizontal

**Test Results (Above 1000MHz)**

Test Mode: 802.11b Mode				Test channel: Middle		
Peak value:						
Frequency (MHz)	Reading (dBuV)	Factor (dB/m)	Result (dBuV/m)	Limit Line (dBuV/m)	Over Limit (dB)	polarization
4874.00	27.15	15.41	42.56	74.00	-31.45	Vertical
7311.00	27.93	18.01	45.94	74.00	-28.06	Vertical
9748.00	28.62	23.79	52.41	74.00	-21.59	Vertical
12185.00	*			74.00		Vertical
14622.00	*			74.00		Vertical
4874.00	27.54	15.41	42.95	74.00	-31.05	Horizontal
7311.00	28.84	18.01	46.85	74.00	-27.15	Horizontal
9748.00	28.96	23.79	52.75	74.00	-21.26	Horizontal
12185.00	*			74.00		Horizontal
14622.00	*			74.00		Horizontal
Average value:						
Frequency (MHz)	Reading (dBuV)	Factor (dB/m)	Result (dBuV/m)	Limit Line (dBuV/m)	Over Limit (dB)	polarization
4874.00	17.99	15.41	33.40	54.00	-20.61	Vertical
7311.00	19.25	18.01	37.26	54.00	-16.74	Vertical
9748.00	19.87	23.79	43.66	54.00	-10.34	Vertical
12185.00	*			54.00		Vertical
14622.00	*			54.00		Vertical
4874.00	19.65	15.41	35.06	54.00	-18.94	Horizontal
7311.00	19.93	18.01	37.94	54.00	-16.06	Horizontal
9748.00	18.68	23.79	42.47	54.00	-11.54	Horizontal
12185.00	*			54.00		Horizontal
14622.00	*			54.00		Horizontal

**Test Results (Above 1000MHz)**

Test Mode: 802.11b Mode				Test channel: Highest		
Peak value:						
Frequency (MHz)	Reading (dBuV)	Factor (dB/m)	Result (dBuV/m)	Limit Line (dBuV/m)	Over Limit (dB)	polarization
4924.00	27.71	15.51	43.22	74.00	-30.79	Vertical
7386.00	28.63	17.97	46.60	74.00	-27.40	Vertical
9848.00	29.43	23.82	53.25	74.00	-20.75	Vertical
12310.00	*			74.00		Vertical
14772.00	*			74.00		Vertical
4924.00	26.93	15.51	42.44	74.00	-31.56	Horizontal
7386.00	27.80	17.97	45.77	74.00	-28.23	Horizontal
9848.00	28.56	23.82	52.38	74.00	-21.63	Horizontal
12310.00	*			74.00		Horizontal
14772.00	*			74.00		Horizontal
Average value:						
Frequency (MHz)	Reading (dBuV)	Factor (dB/m)	Result (dBuV/m)	Limit Line (dBuV/m)	Over Limit (dB)	polarization
4924.00	17.62	15.51	33.13	54.00	-20.88	Vertical
7386.00	18.55	17.97	36.52	54.00	-17.48	Vertical
9848.00	19.43	23.82	43.25	54.00	-10.75	Vertical
12310.00	*			54.00		Vertical
14772.00	*			54.00		Vertical
4924.00	17.29	15.51	32.80	54.00	-21.20	Horizontal
7386.00	18.27	17.97	36.24	54.00	-17.76	Horizontal
9848.00	18.17	23.82	41.99	54.00	-12.02	Horizontal
12310.00	*			54.00		Horizontal
14772.00	*			54.00		Horizontal

Remark:

1. During the test, pre-scan the 802.11b,g,n(HT20),n(HT40) mode, and found the 802.11b mode is worse case , the report only record this mode.
2. Result=Reading + Factor
3. “\*”, means this data is the too weak instrument of signal is unable to test.

**Radiated Band Edge:**

Test Mode: 802.11b Mode				Test channel: Lowest		
Peak value:						
Frequency (MHz)	Reading (dBuV)	Factor (dB/m)	Result (dBuV/m)	Limit Line (dBuV/m)	Over Limit (dB)	Polarization
2310.00	38.05	9.58	47.63	74.00	-26.37	Horizontal
2390.00	40.54	9.73	50.27	74.00	-23.73	Horizontal
2310.00	39.31	9.58	48.89	74.00	-25.11	Vertical
2390.00	46.13	9.73	55.86	74.00	-18.15	Vertical
Average value:						
Frequency (MHz)	Reading (dBuV)	Factor (dB/m)	Result (dBuV/m)	Limit Line (dBuV/m)	Over Limit (dB)	Polarization
2310.00	28.67	9.58	38.25	54.00	-15.75	Horizontal
2390.00	35.86	9.73	45.59	54.00	-8.41	Horizontal
2310.00	30.04	9.58	39.62	54.00	-14.39	Vertical
2390.00	38.19	9.73	47.92	54.00	-6.08	Vertical

Test Mode: 802.11b Mode				Test channel: Highest		
Peak value:						
Frequency (MHz)	Reading (dBuV)	Factor (dB/m)	Result (dBuV/m)	Limit Line (dBuV/m)	Over Limit (dB)	Polarization
2483.50	46.23	9.91	56.14	74.00	-17.86	Horizontal
2500.00	40.16	9.94	50.10	74.00	-23.90	Horizontal
2483.50	46.59	9.91	56.50	74.00	-17.50	Vertical
2500.00	39.80	9.94	49.74	74.00	-24.27	Vertical
Average value:						
Frequency (MHz)	Reading (dBuV)	Factor (dB/m)	Result (dBuV/m)	Limit Line (dBuV/m)	Over Limit (dB)	Polarization
2483.50	37.39	9.91	47.30	54.00	-6.70	Horizontal
2500.00	29.18	9.94	39.12	54.00	-14.88	Horizontal
2483.50	38.91	9.91	48.82	54.00	-5.18	Vertical
2500.00	29.63	9.94	39.57	54.00	-14.43	Vertical

Remark: 1. Result=Reading + Factor

**Radiated Band Edge:**

Test Mode: 802.11g Mode				Test channel: Lowest		
Peak value:						
Frequency (MHz)	Reading (dBuV)	Factor (dB/m)	Result (dBuV/m)	Limit Line (dBuV/m)	Over Limit (dB)	Polarization
2310.00	36.84	9.58	46.42	74.00	-27.58	Horizontal
2390.00	40.48	9.73	50.21	74.00	-23.79	Horizontal
2310.00	38.80	9.58	48.38	74.00	-25.63	Vertical
2390.00	42.45	9.73	52.18	74.00	-21.82	Vertical
Average value:						
Frequency (MHz)	Reading (dBuV)	Factor (dB/m)	Result (dBuV/m)	Limit Line (dBuV/m)	Over Limit (dB)	Polarization
2310.00	29.09	9.58	38.67	54.00	-15.33	Horizontal
2390.00	35.33	9.73	45.06	54.00	-8.94	Horizontal
2310.00	30.05	9.58	39.63	54.00	-14.38	Vertical
2390.00	35.83	9.73	45.56	54.00	-8.44	Vertical

Test Mode: 802.11g Mode				Test channel: Highest		
Peak value:						
Frequency (MHz)	Reading (dBuV)	Factor (dB/m)	Result (dBuV/m)	Limit Line (dBuV/m)	Over Limit (dB)	Polarization
2483.50	46.23	9.91	56.14	74.00	-17.86	Horizontal
2500.00	40.09	9.94	50.03	74.00	-23.97	Horizontal
2483.50	46.34	9.91	56.25	74.00	-17.75	Vertical
2500.00	39.71	9.94	49.65	74.00	-24.35	Vertical
Average value:						
Frequency (MHz)	Reading (dBuV)	Factor (dB/m)	Result (dBuV/m)	Limit Line (dBuV/m)	Over Limit (dB)	Polarization
2483.50	35.56	9.91	45.47	54.00	-8.53	Horizontal
2500.00	28.28	9.94	38.22	54.00	-15.78	Horizontal
2483.50	37.86	9.91	47.77	54.00	-6.23	Vertical
2500.00	29.16	9.94	39.10	54.00	-14.90	Vertical

Remark: 1. Result=Reading + Factor

**Radiated Band Edge:**

Test Mode: 802.11n (HT20) Mode				Test channel: Lowest		
Peak value:						
Frequency (MHz)	Reading (dBuV)	Factor (dB/m)	Result (dBuV/m)	Limit Line (dBuV/m)	Over Limit (dB)	Polarization
2310.00	34.84	9.58	44.42	74.00	-29.58	Horizontal
2390.00	38.48	9.73	48.21	74.00	-25.79	Horizontal
2310.00	37.80	9.58	47.38	74.00	-26.63	Vertical
2390.00	40.45	9.73	50.18	74.00	-23.82	Vertical
Average value:						
Frequency (MHz)	Reading (dBuV)	Factor (dB/m)	Result (dBuV/m)	Limit Line (dBuV/m)	Over Limit (dB)	Polarization
2310.00	27.77	9.58	37.35	54.00	-16.65	Horizontal
2390.00	33.10	9.73	42.83	54.00	-11.17	Horizontal
2310.00	27.66	9.58	37.24	54.00	-16.77	Vertical
2390.00	33.83	9.73	43.56	54.00	-10.44	Vertical

Test Mode: 802.11n (HT20) Mode				Test channel: Highest		
Peak value:						
Frequency (MHz)	Reading (dBuV)	Factor (dB/m)	Result (dBuV/m)	Limit Line (dBuV/m)	Over Limit (dB)	Polarization
2483.50	44.00	9.91	53.91	74.00	-20.09	Horizontal
2500.00	38.16	9.94	48.10	74.00	-25.90	Horizontal
2483.50	45.59	9.91	55.50	74.00	-18.50	Vertical
2500.00	39.80	9.94	49.74	74.00	-24.27	Vertical
Average value:						
Frequency (MHz)	Reading (dBuV)	Factor (dB/m)	Result (dBuV/m)	Limit Line (dBuV/m)	Over Limit (dB)	Polarization
2483.50	33.54	9.91	43.45	54.00	-10.55	Horizontal
2500.00	28.43	9.94	38.37	54.00	-15.63	Horizontal
2483.50	34.68	9.91	44.59	54.00	-9.41	Vertical
2500.00	29.30	9.94	39.24	54.00	-14.76	Vertical

Remark: 1. Result=Reading + Factor

**Radiated Band Edge:**

Test Mode: 802.11n (HT40) Mode				Test channel: Lowest		
Peak value:						
Frequency (MHz)	Reading (dBuV)	Factor (dB/m)	Result (dBuV/m)	Limit Line (dBuV/m)	Over Limit (dB)	Polarization
2310.00	37.31	9.58	46.89	74.00	-27.11	Horizontal
2390.00	41.48	9.73	51.21	74.00	-22.79	Horizontal
2310.00	39.80	9.58	49.38	74.00	-24.63	Vertical
2390.00	42.66	9.73	52.39	74.00	-21.61	Vertical
Average value:						
Frequency (MHz)	Reading (dBuV)	Factor (dB/m)	Result (dBuV/m)	Limit Line (dBuV/m)	Over Limit (dB)	Polarization
2310.00	28.69	9.58	38.27	54.00	-15.73	Horizontal
2390.00	34.17	9.73	43.90	54.00	-10.10	Horizontal
2310.00	28.86	9.58	38.44	54.00	-15.57	Vertical
2390.00	33.23	9.73	42.96	54.00	-11.04	Vertical

Test Mode: 802.11n (HT40) Mode				Test channel: Highest		
Peak value:						
Frequency (MHz)	Reading (dBuV)	Factor (dB/m)	Result (dBuV/m)	Limit Line (dBuV/m)	Over Limit (dB)	Polarization
2483.50	43.91	9.91	53.82	74.00	-20.18	Horizontal
2500.00	38.84	9.94	48.78	74.00	-25.22	Horizontal
2483.50	45.72	9.91	55.63	74.00	-18.37	Vertical
2500.00	40.30	9.94	50.24	74.00	-23.77	Vertical
Average value:						
Frequency (MHz)	Reading (dBuV)	Factor (dB/m)	Result (dBuV/m)	Limit Line (dBuV/m)	Over Limit (dB)	Polarization
2483.50	33.24	9.91	43.15	54.00	-10.85	Horizontal
2500.00	30.43	9.94	40.37	54.00	-13.63	Horizontal
2483.50	34.68	9.91	44.59	54.00	-9.41	Vertical
2500.00	30.30	9.94	40.24	54.00	-13.76	Vertical

Remark: 1. Result=Reading + Factor

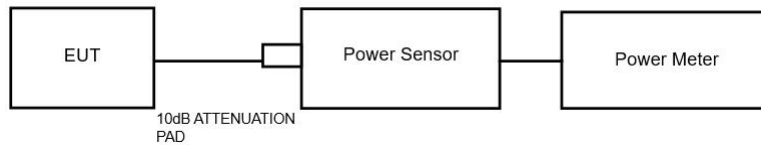


## 5. Maximum Output Power Test

### 5.1. Test Standard and Limit

Test Standard	FCC Part15 C Section 15.247 (b)(3)
Test Limit	30dBm

### 5.2. Test Setup



### 5.3. Test Procedure

1. The Transmitter output (antenna port) was connected to the power meter.
2. Turn on the EUT and power meter and then record the power value.
3. Repeat above procedures on all channels needed to be tested.

Note: The cable loss and attenuator loss were offset into measure device as amplitude offset.

### 5.4. Test Data

Pass

Please refer to Appendix C of the Appendix Test Data.

#### Additional test for duty cycle.

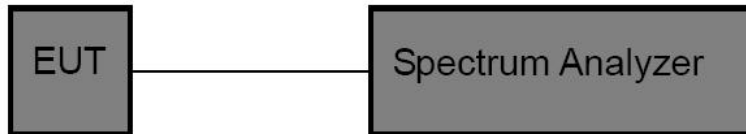
Please refer to Appendix G of the Appendix Test Data.

## 6. 6DB Occupy Bandwidth Test

### 6.1. Test Standard and Limit

Test Standard	FCC Part15 C Section 15.247 (a)(2)
Test Limit	>500kHz

### 6.2. Test Setup



### 6.3. Test Procedure

1. Place the EUT on the table and set it in the transmitting mode.
2. Remove the antenna from the EUT and then connect a low loss RF cable from the antenna port to the spectrum analyzer.
3. Set the spectrum analyzer as:  
RBW= 100kHz, VBW $\geq$ 3\*RBW =300kHz  
Detector= Peak  
Trace mode= Max hold.  
Sweep- auto couple.
4. Mark the peak frequency and -6dB (upper and lower) frequency.
5. Repeat until all the rest channels are investigated.

### 6.4. Test Data

Pass

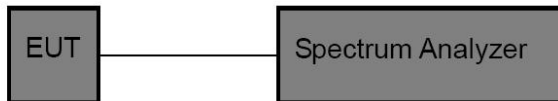
Please refer to Appendix B of the Appendix Test Data.

## 7. Power Spectral Density Test

### 7.1. Test Standard and Limit

Test Standard	FCC Part15 C Section
Test Limit	8dBm/3KHz

### 7.2. Test Setup



### 7.3. Test Procedure

1. Place the EUT on the table and set it in transmitting mode. Remove the antenna from the EUT and then connect a low loss RF cable from the antenna port to the spectrum analyzer.
2. Set the spectrum analyzer as RBW = 3kHz, VBW = 10kHz, Span = 1.5xDTS BW
3. Record the max. reading.
4. Repeat the above procedure until the measurements for all frequencies are completed.

### 7.4. Test Data

Pass

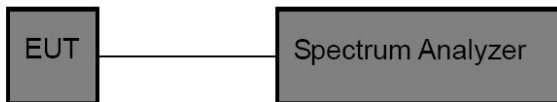
Please refer to Appendix D of the Appendix Test Data.

## 8. 100kHz Bandwidth of Frequency Band Edge Requirement

### 8.1. Test Standard and Limit

Test Standard	FCC Part15 C Section 15.247 (d)
Test Limit	in any 100 kHz bandwidth outside the frequency bands in which the spread spectrum intentional radiator in operating, the radio frequency power that is produced by the intentional radiator shall be at least 20dB below that in the 100kHz bandwidth within the band that contains the highest level of the desired power, In addition, radiated emissions which fall in the restricted bands, as defined in §15.205(a), must also comply with the radiated emission limits specified in15.209(a).

### 8.2. Test Setup



### 8.3. Test Procedure

Using the following spectrum analyzer setting:

1. Set the RBW = 100KHz.
2. Set the VBW = 300KHz.
3. Sweep time = auto couple.
4. Detector function = peak.
5. Trace mode = max hold.
6. Allow trace to fully stabilize.

### 8.4. Test Data

Pass

Please refer to Appendix E & Appendix F of the Appendix Test Data.

## 9. Antenna Requirement

### 9.1. Test Standard and Requirement

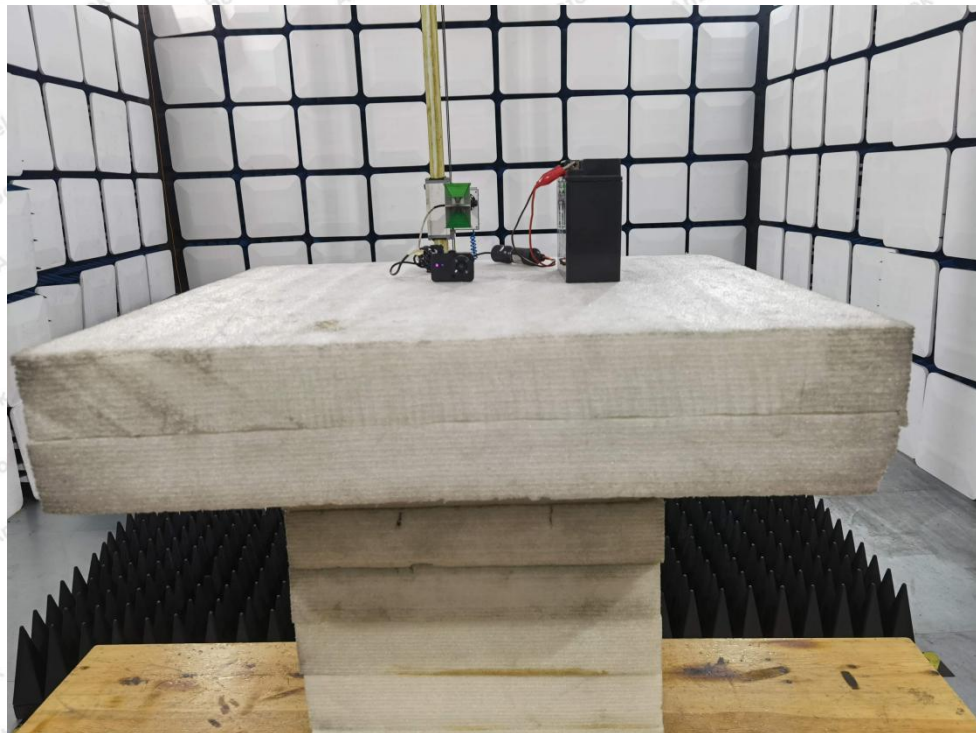
Test Standard	FCC Part15 Section 15.203 /247(c)
Requirement	<p>1) 15.203 requirement: An intentional radiator shall be designed to ensure that no antenna other than that furnished by the responsible party shall be used with the device. The use of a permanently attached antenna or of an antenna that uses a unique coupling to the intentional radiator, the manufacturer may design the unit so that a broken antenna can be replaced by the user, but the use of a standard antenna jack or electrical connector is prohibited.</p> <p>2) 15.247(c) (1)(i) requirement: Systems operating in the 2400-2483.5 MHz band that is used exclusively for fixed. Point-to-point operations may employ transmitting antennas with directional gain greater than 6dBi provided the maximum conducted output power of the intentional radiator is reduced by 1 dB for every 3 dB that the directional gain of the antenna exceeds 6 dBi.</p>

### 9.2. Antenna Connected Construction

The antenna is a PIFA Antenna which permanently attached, and the best case gain of the antenna is 2dBi It complies with the standard requirement.

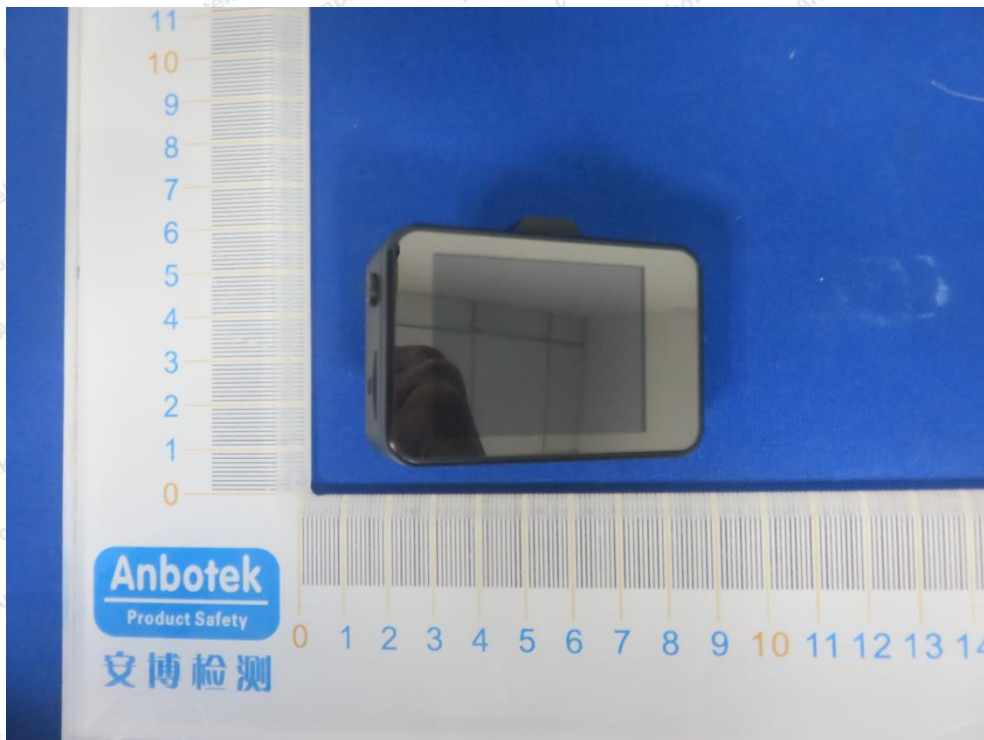
## APPENDIX I -- TEST SETUP PHOTOGRAPH

Photo of Radiation Emission Test

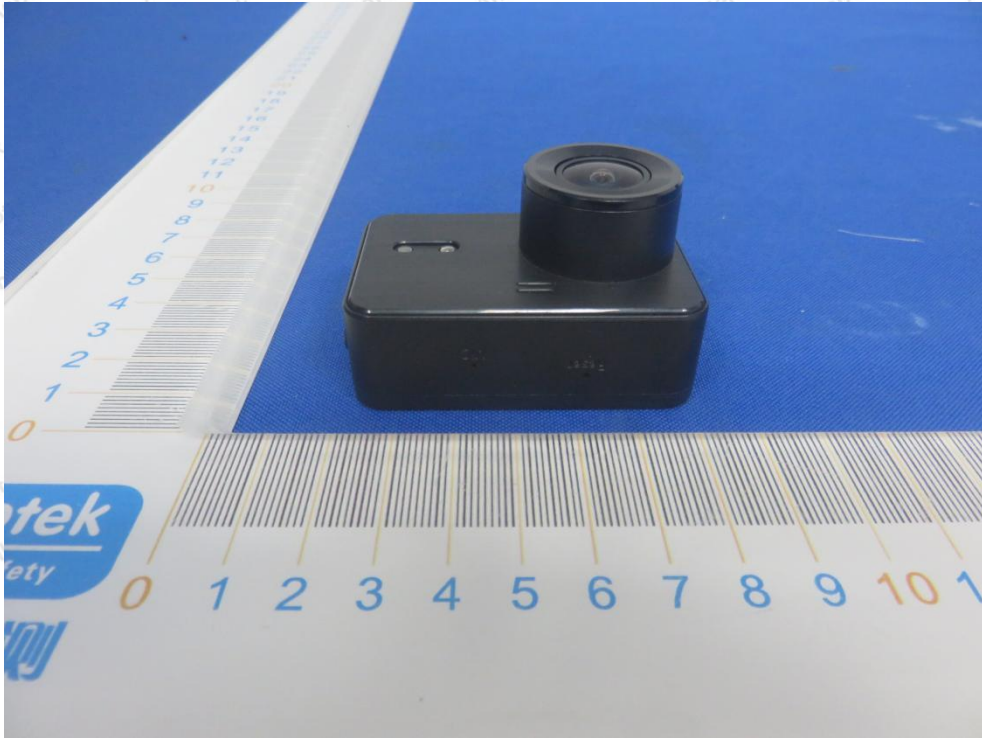


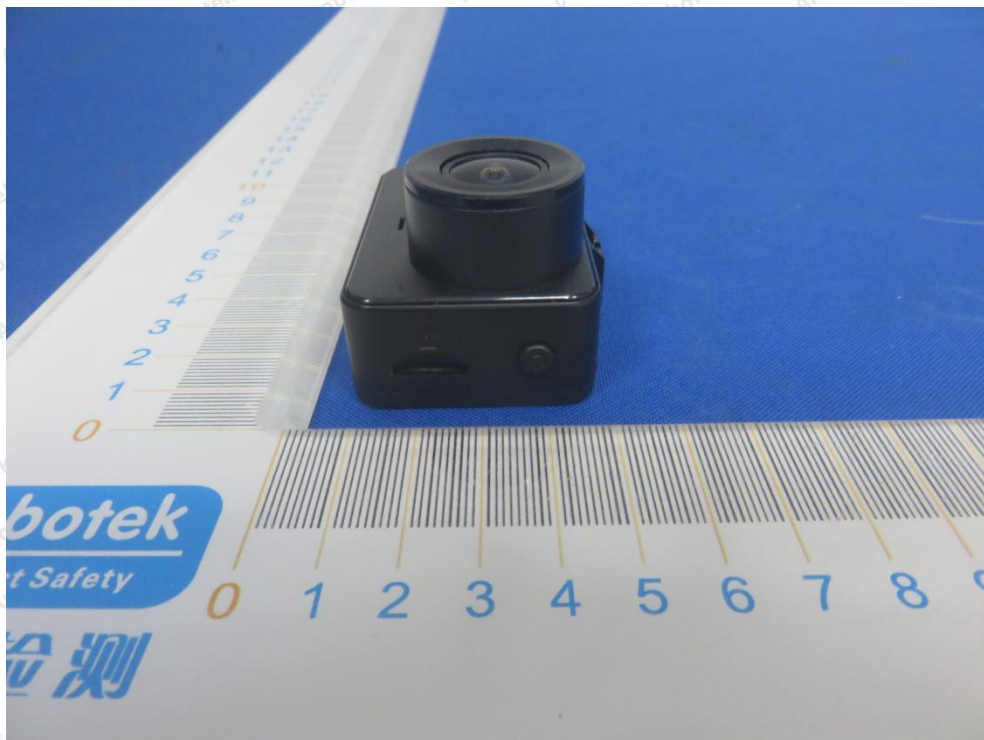
## APPENDIX II -- EXTERNAL PHOTOGRAPH



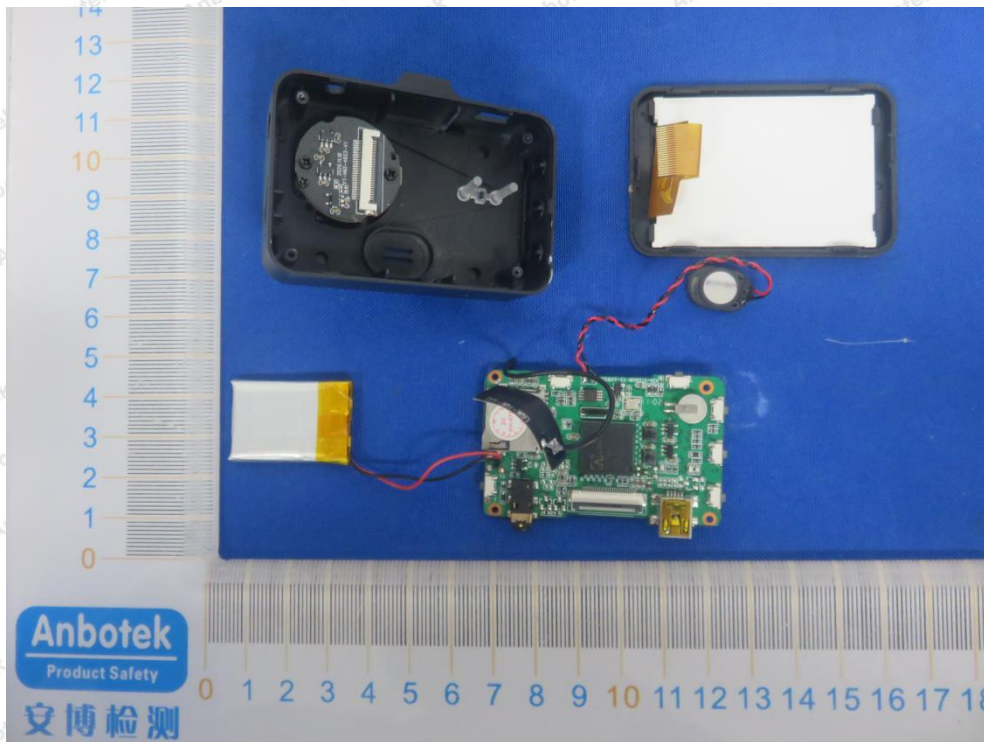


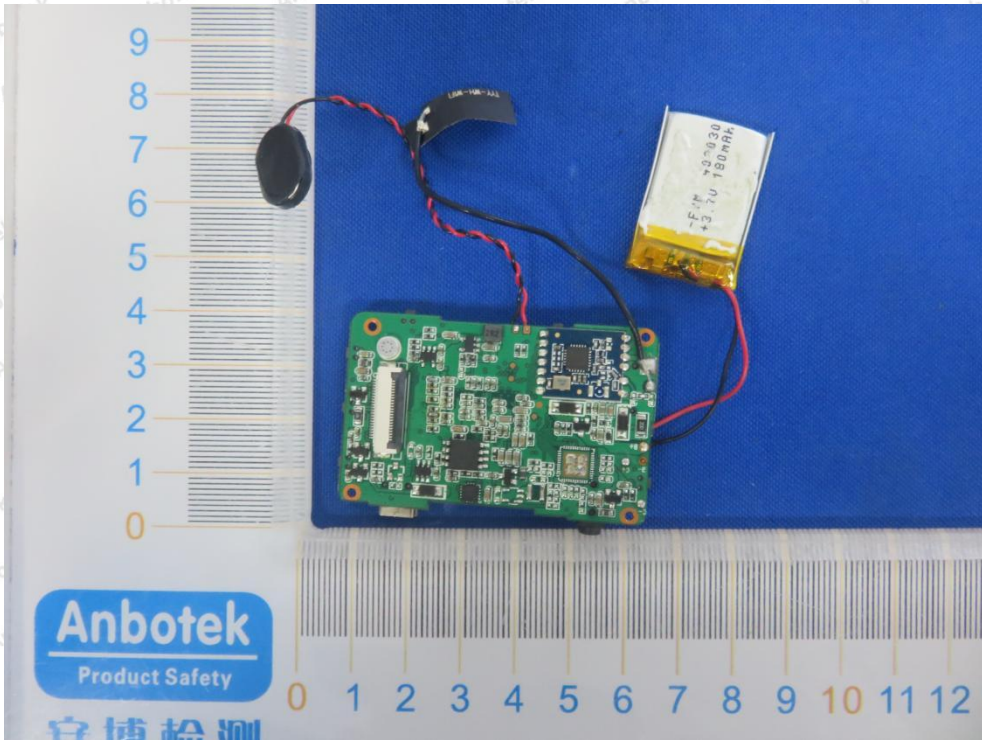
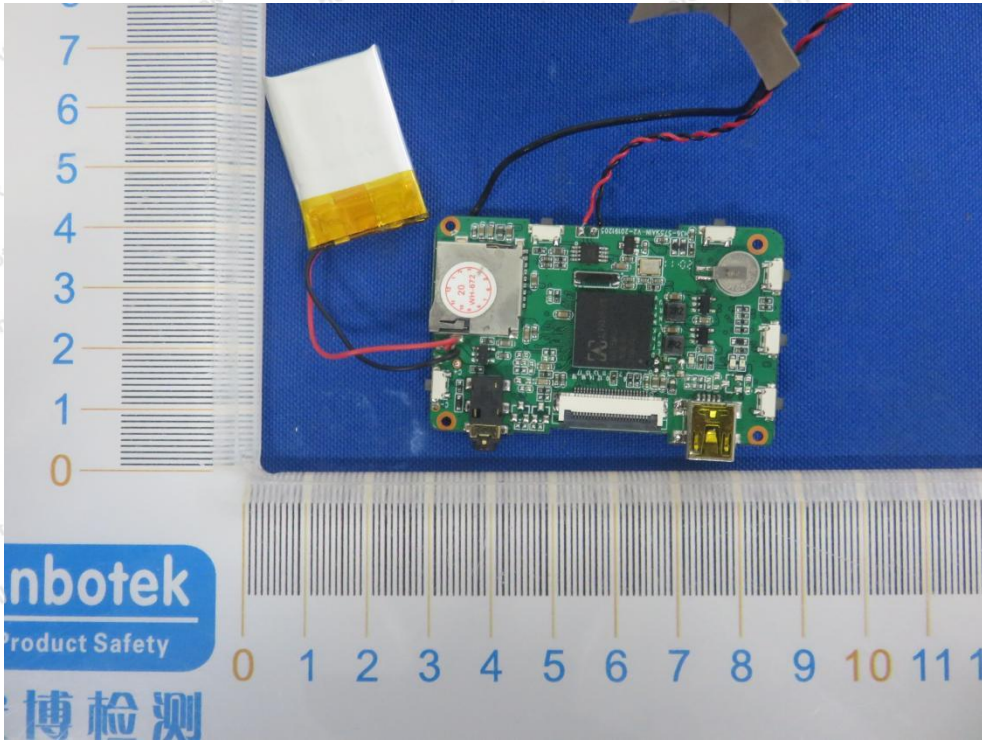


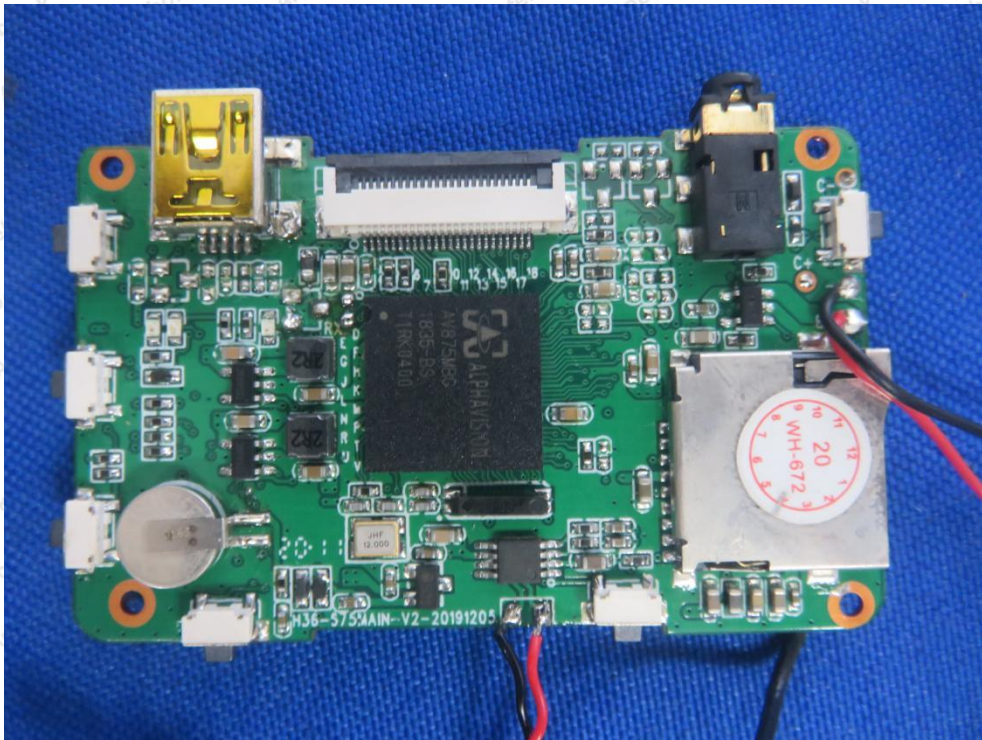
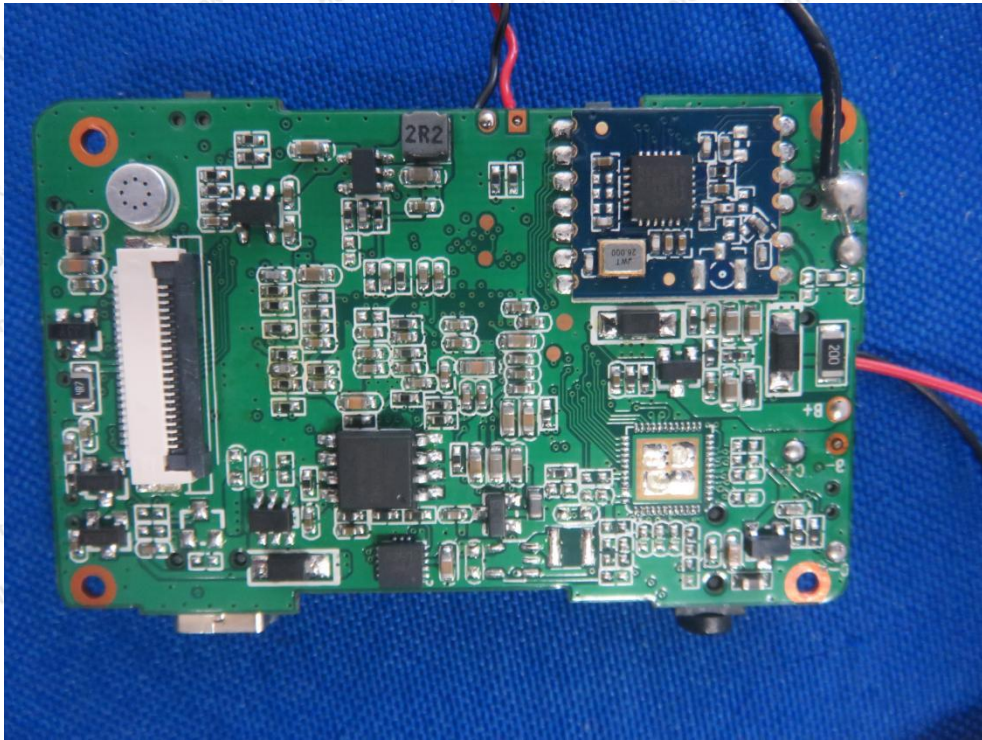


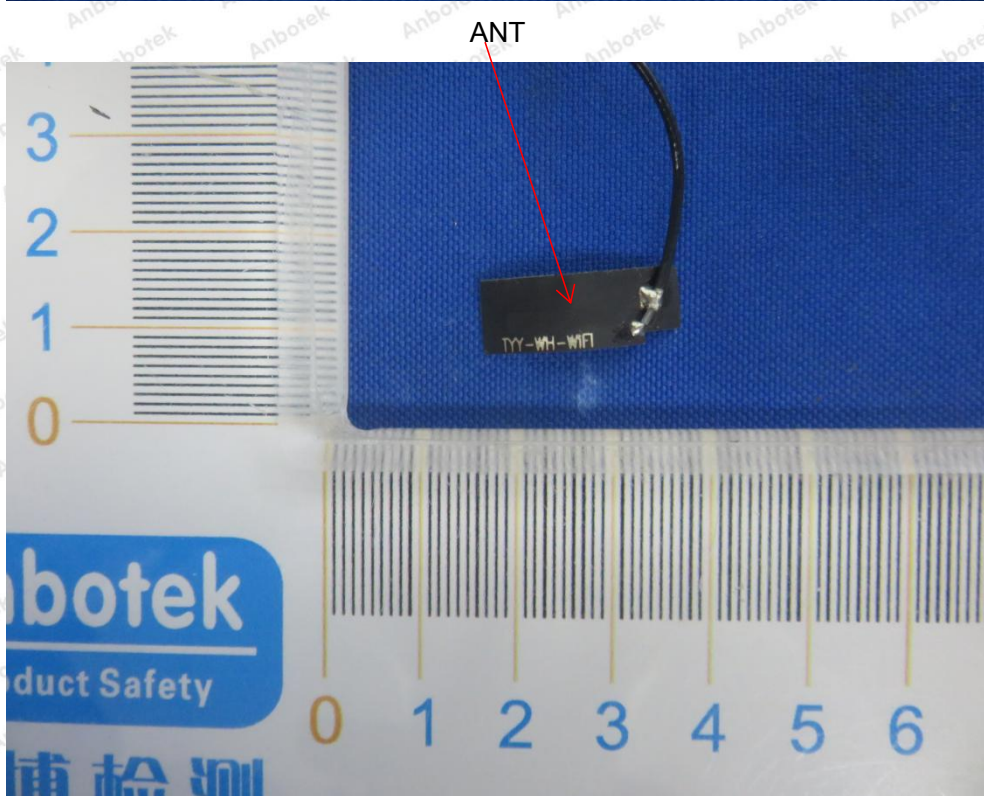


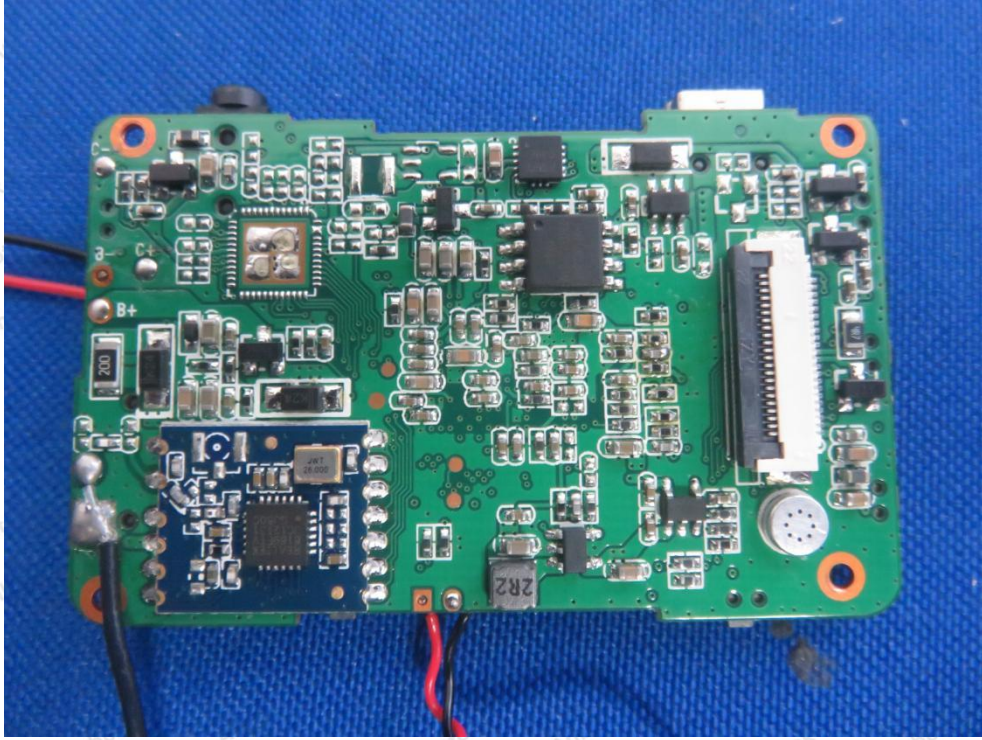
### APPENDIX III -- INTERNAL PHOTOGRAPH

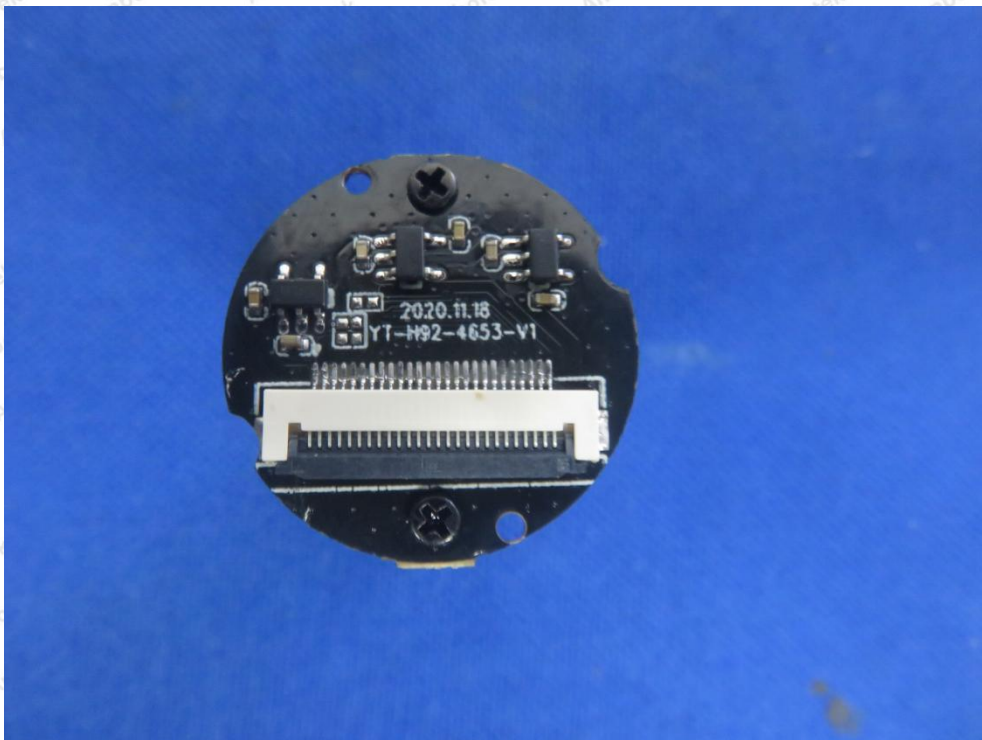
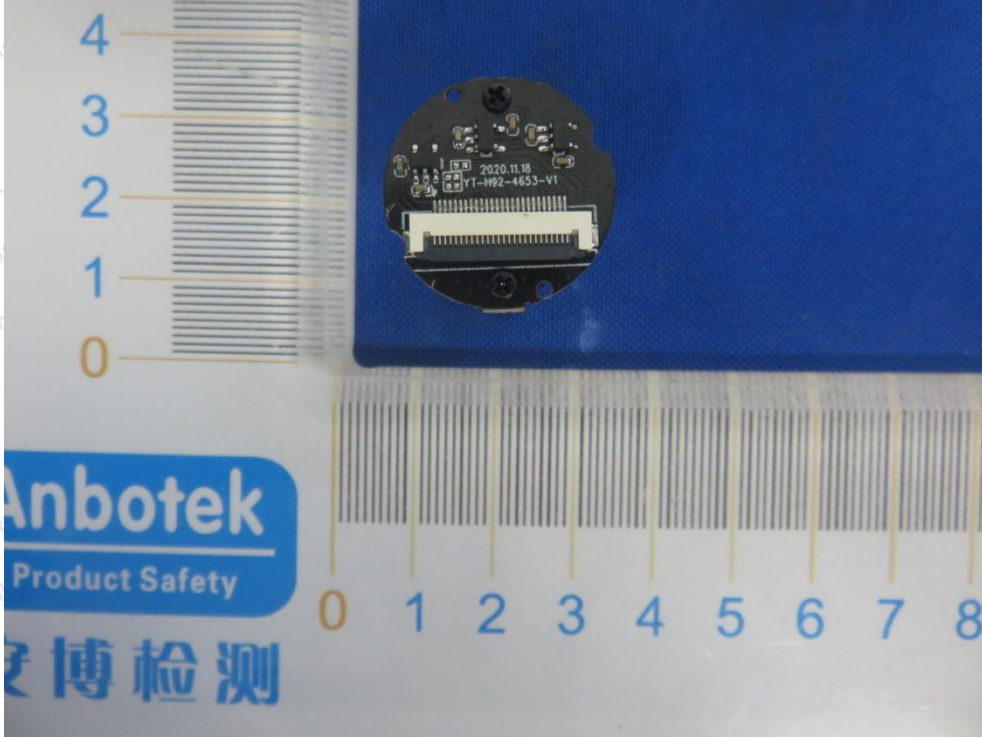














## APPENDIX IV – Appendix Test Data