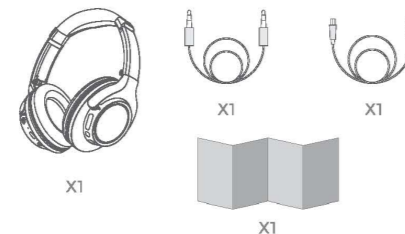


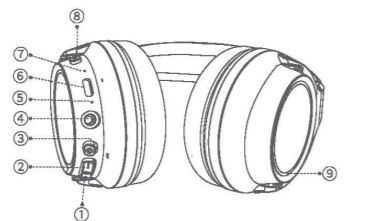
BT earphone



Packing list

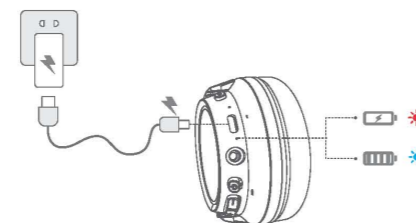


Diagram



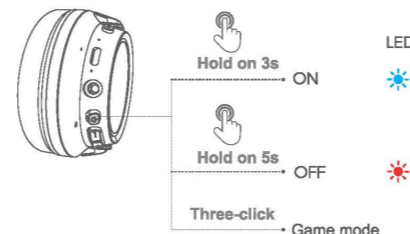
- | | |
|------------------------|----------------------------|
| 1. Volume control up | 6. Type-C charging port |
| 2. Volume control down | 7. Microphone |
| 3. Power on / off | 8. RGB light change button |
| 4. 3.5mm jack | 9. RGB light |
| 5. Power Indicator | |

Charge battery



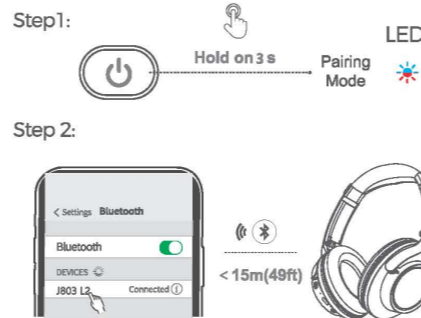
While the Bluetooth headset is charging, the Power Indicator will show a Red LED light until fully charged. Once fully charged, the light indicator will be Blue.

Power on / off & Game mode



- Power on:** Press and hold the "Power" button for 3 seconds, then the headphone will turn on with prompt "Power on" and Blue/Red LED light will flash.
- Power off:** Press and hold the "Power" button for 5s, then the headphone will turn off with prompt "Power off" and Red LED will light on for 2s then off.
- Game mode:** Please click the "Power" button three times to enter the low-latency mode, which will be turned on with a "Di" voice. Click the power button three times, the game mode will be turned off with "DuDu" voice.

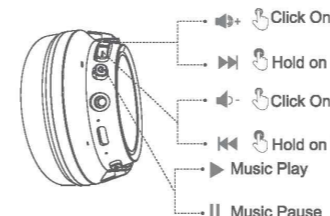
How to pair



Connect for first time:

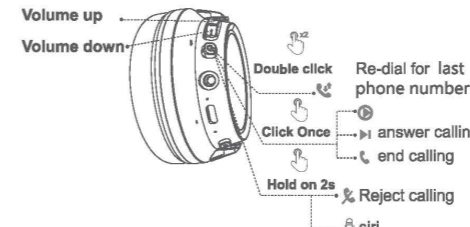
- Press and hold power button for about 3 seconds, unit will power on, at the same time will enter pairing mode: you can hear voice tone "pairing." Then see the LED light blinks blue and red (between Aux in hole and Type-C charging hole).
- Turn on Bluetooth on your device (mobile, PC, tablet etc), enter the bluetooth list, searching, when seeing "J803L2" on the list, click it to connect the headset with your device. Once successfully paired, you can hear voice tone "connected".

Music Play



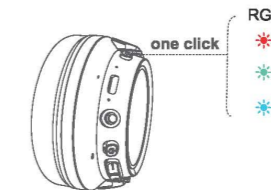
- Press the "Power" button: Music Play / Music Pause
- Press the "+" button: Short press "+" button for Volume Up; Long press "+" button for Next Track
- Press the "-" button: Short press the "-" button for Volume Down; Long press "-" button for Previous Track

Calling (Mobile Phone)



- Short pressing power button to receive or end a call.
- Long pressing power button for about 2s to reject a call.
- Press and hold the button for 2 seconds: Voice Assistant
- Double clicks power button for redial last call number
- Short press the "+" button (Voice "Di" when maximum volume): Volume Up
- Short press the "-" button (Voice "Du" when minimum volume): Volume Down

RGB Light



Technical Data Sheet

Type	Feature	Description or Detail
BT	Pair name	"J803L2"
	Operated distance	Over 15m
	Frequency Range	2402-2480 MHz
Speaker	Diameter	Φ40 +/- 0.3 mm
	Frequency Response	20Hz-20KHz
	Impedance	32Ω +/- 15%
	Sensitivity/S.P.L.	115±3 dB(at 1K Hz,IEC318 test)
	Rated Power	10mW

Battery	Type	Chargeable Li-ion Battery
	Capacity	750 mAh

FCC STATEMENT

1. This device complies with Part 15 of the FCC Rules. Operation is subject to the following two conditions: (1) This device may not cause harmful interference, and (2) This device must accept any interference received, including interference that may cause undesired operation.

2. Changes or modifications not expressly approved by the party responsible for compliance could void the user's authority to operate the equipment.

For a Class B digital device or peripheral, the instructions furnished the user shall include the following or similar statement, placed in a prominent location in the text of the manual:

Note: This equipment has been tested and found to comply with the limits for a Class B digital device, pursuant to part 15 of the FCC Rules. These limits are designed to provide reasonable protection against harmful interference in a residential installation. This equipment generates, uses and can radiate radio frequency energy and, if not installed and used in accordance with the instructions, may cause harmful interference to radio communications. However, there is no guarantee that interference will not occur in a particular installation. If this equipment does cause harmful interference to radio or television reception, which can be determined by turning the equipment off and on, the user is encouraged to try to correct the interference by one or more of the following measures:

- Reorient or relocate the receiving antenna.
- Increase the separation between the equipment and receiver.
- Connect the equipment into an outlet on a circuit different from that to which the receiver is connected.
- Consult the dealer or an experienced radio/TV technician for help.

FCC Radiation Exposure Statement:

This equipment complies with FCC radiation exposure limits set forth for an uncontrolled environment.