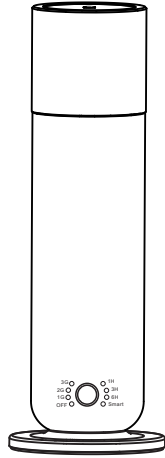


PRODUCT MANUAL

Aroma diffuser



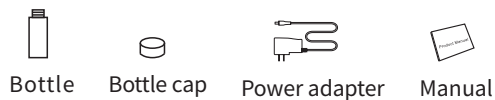
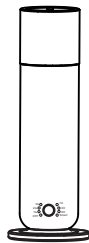
- BT
- Button



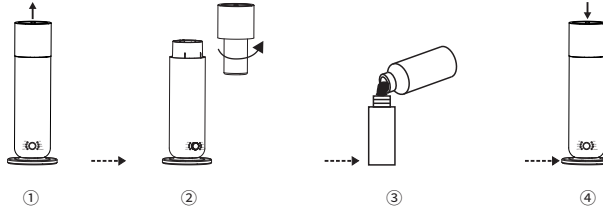
If the QR code cannot be scanned, please search for "Scent Marketing" in Google play or APP store.

01 Specification

| | |
|-------------------|--|
| [Model] | A974-b |
| [Size] | φ103*293mm |
| [Bottle] | 120ml |
| [Input] | 12V = 1A |
| [Working Power] | 6W |
| [Coverage] | 55m ² /165m ³ /5800ft ³ |
| [N.W.] | 0.66 kg |
| [Material] | PP +Fabric |

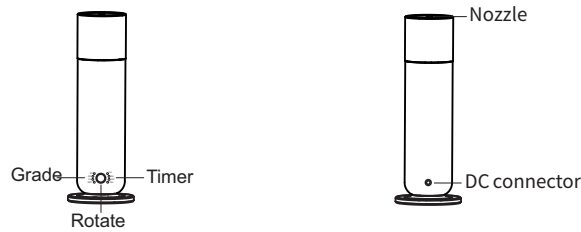


02 Installation step



1. Take out the diffuser head;
2. Twist off the bottle;
3. Fill the bottle with essential oil;
4. Put the diffuser head back in the machine.

03 Functional analysis



Rotate

- Rotate clockwise to adjust the timer levels: 1H-3H-6H-Smart.
- Rotate counterclockwise to adjust the timer levels: Smart-6H-3H-1H.

Grade button

- Short press to turn off and switch cycle through the settings: G1 - G2 - G3 - OFF.
- Long press for 1 second to turn on/off the ambient light, no matter the device's power status;
- Long press the OFF for 1 second to turn the ambient light on/off, without affecting other lights.

Timer Function

- Press to start the timer mode: Set to 1H for 1 hour of operation before automatic shutoff; Set to 3H for 3 hours, or 6H for 6 hours, after which the device will turn off automatically.
- Ambient light: Orange light. It defaults to always on when powered on.

Smart APP

- Bluetooth Paired: the light remains on.
- Data receiving: the light flashes.
- Bluetooth Unpaired: the light is off.

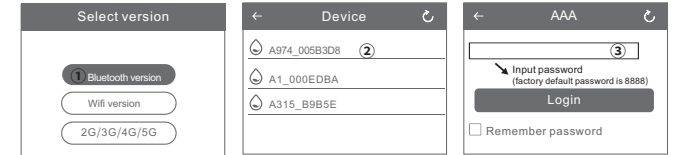
04 Smart App Instructions

Where to get the app:

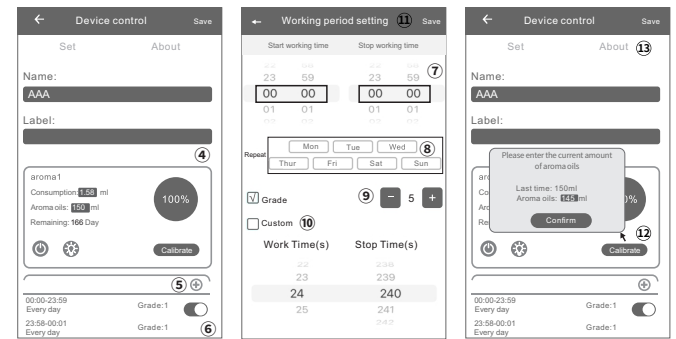
Please search for "Scent Marketing" in Google play or APP store.

Note:

Make sure that the location function of Bluetooth and mobile phone is enabled.



1. Open the scent marketing app and select Bluetooth.
2. Select your device.
3. Enter the default password 8888 and press Login.



4. On the Device Control page; You can change your device name and label information of your scent diffuser. **NOTE:** Press the "Save" button at the top right corner of the screen after each change.
5. Different schedules by pressing the "+" button. To delete a schedule, swipe left.
6. Press the toggle button to turn on/off any schedule.
7. On the "Working period setting" page, Set the hours of the day you want your diffuser to run by scrolling the "Start working time" and "Stop working time".
8. Select the days of the week you want your diffuser to run (all days are pre-selected).
9. Press "+" or "-" to increase or decrease the preset intensity grades (1-5. See chart for details).
10. Check (✓) the Custom box to create a custom intensity and scroll the "Spray Time" and "Pause Time".
11. Press the "Save" button to update the Settings.
12. Tap "Calibrate" to calibrate consumption. It is advised to calibrate after working for at least 10 days. Please measure the remaining oil of the bottle first before starting calibrating. Enter the current essential oil volume, then click "Confirm" to update the consumption and remaining days automatically.
13. Change the default password by pressing on the "About" tab, in the "Device control".
14. Press the "Password Change" to access the password change page.

15. Enter a new four-digit password, then click "Confirm".

If you forget your password, hold down the On/Off button for 5 seconds, Restore factory settings, password is 8888

05 Concentration and consumption

| Grade | Work time(s) | Stop time(s) | Consumption(g/h) |
|-------|--------------|--------------|------------------|
| G1 | 10s | 220s | 0.11 |
| G2 | 20s | 120s | 0.35 |
| G3 | 25s | 60s | 0.72 |

Note: 1. Above data is for reference only. If customers use essential oils with different viscosities, the oil consumption will vary;

2. For the best diffusion effect, it's recommended to use essential oils with a viscosity below 30mPa.s. And the optimal working temperature is 25°C.

06 ISED Statement

English: This device contains licence-exempt transmitter(s)/receiver(s) that comply with Innovation, Science and Economic Development Canada's licence-exempt RSS(s). Operation is subject to the following two conditions:

(1) This device may not cause interference.

(2) This device must accept any interference, including interference that may cause undesired operation of the device.

The digital apparatus complies with Canadian CAN ICES-3 (B)/NMB-3(B).

French: Cet appareil contient des émetteurs/récepteurs exempts de licence qui sont conformes aux RSS exemptés de licence d'Innovation, Sciences et Développement économique Canada.

L'exploitation est soumise aux deux conditions suivantes:

(1) Cet appareil ne doit pas provoquer d'interférences.

(2) Cet appareil doit accepter toute interférence, y compris les interférences susceptibles de provoquer un fonctionnement indésirable de l'appareil.

l'appareil numérique du ciem conforme canadien peut -3 (b) / nmb -3 (b).

This device meets the exemption from the routine evaluation limits in section 6.3 of RSS 102 and compliance with RSS 102 RF exposure, users can obtain Canadian information on RF exposure and compliance.

cet appareil est conforme à l'exemption des limites d'évaluation courante dans la section 6.3 du cnr - 102 et conformité avec rrs 102 de l'exposition aux rf, les utilisateurs peuvent obtenir des données canadiennes sur l'exposition aux champs rf et la conformité.

This equipment complies with Canada radiation exposure limits set forth for an uncontrolled environment.

Cet équipement est conforme aux limites d'exposition aux rayonnements du Canada établies pour un environnement non contrôlé.

This equipment should be installed and operated with minimum distance 20cm between the radiator & your body.

Cet équipement doit être installé et utilisé à une distance minimale de 20 cm entre le radiateur et votre corps.

07 FCC Statement

This device complies with part 15 of the FCC Rules. Operation is subject to the following two conditions:

(1) This device may not cause harmful interference, and

(2) this device must accept any interference received, including interference that may cause undesired operation.

This equipment has been tested and found to comply with the limits for a Class B digital device, pursuant to part 15 of the FCC Rules. These limits are designed to provide reasonable protection against harmful interference in a residential installation. This equipment generates, uses and can radiate radio frequency energy and, if not installed and used in accordance with the instructions, may cause harmful interference to radio communications. However, there is no guarantee that interference will not occur in a particular installation. If this equipment does cause harmful interference to radio or television reception, which can be determined by turning the equipment off and on, the user is encouraged to try to correct the interference by one or more of the following measures:

- Reorient or relocate the receiving antenna.

- Increase the separation between the equipment and receiver.

- Connect the equipment into an outlet on a circuit different from that to which the receiver is connected.

- Consult the dealer or an experienced radio/TV technician for help.

FCC Caution: Any changes or modifications not expressly approved by the party responsible

for compliance could void the user's authority to operate the equipment. This transmitter must not be co-located or operating in conjunction with any other antenna or transmitter. Not applicable

RF Exposure

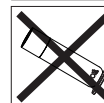
This device complies with FCC radiation exposure limits set forth for an uncontrolled

environment. This equipment should be installed and operated with minimum distance 20cm

between the radiator & your body.

08 ⚠ Warning

1. Please read the user manual before operation & maintenance;
2. Keep the machine vertical, laying flat may cause oil overflow;
3. Make sure the machine without essential oil inside the bottle before transportation;
4. Tighten oil bottle before use;
5. Clean the machine with alcohol every 1-2 months;
6. Do NOT modify, disassemble or repair the machine. If any failure occurs, please contact our technical personnel.



09 Troubleshooting

Before asking to have the machine repaired, please try to diagnose the problem first by following the instructions below.

| Breakdown | Solution |
|------------------|---|
| Does not diffuse | -Check whether the mode you chose correct or not. -Check if the machine is in a "Non-Working period". -Air pump may be damaged, replace with a new one. -Check whether the tube is loose or not. |
| Low diffuse | -The atomizing core is blocked, clean with alcohol or change to a new atomizer heads. -Check whether the gasket is damaged/loose or missing. -Check whether the tube is loose or not connected. |
| Oil spill | -Check whether the bottle is loose. -Check if the gasket in the atomized head is damaged, loose or missing. |
| Oil sprinkle | -The atomized head is damaged: change to a new one. -The machine is tilted or laying flat, keep the machine vertical. |
| Abnormal noise | -The air pump is loose, retighten the pump -The air pump is damaged:replace. |

10 Equipment cleaning

The machine needs to be cleaned when these conditions exist:

1. You're about to changing to another kind of essential oil;
2. The atomization volume becomes weak.

Cleaning steps:

1. Pull out the atomized head.
2. Find a larger container and fill with industrial alcohol up, then soak the atomized head and the bottle for 5-10mins.
3. Allow the atomizer head and the bottle to dry.

11 Declaration of conformity

Herby,Guangdong Chiyang Scent Technology Co.,Ltd. declares that this Aromadiffuser, A974-b is in compliance with the essential requirements and other relevant provisions of Directive 2014/53/EU. In accordance with Article 10(2) and Article 10(10), this product allowed to be used in all EU member states.