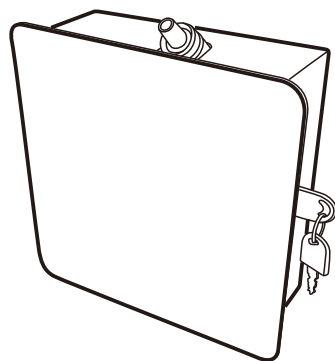


PRODUCT MANUAL

Aroma diffuser



Scent marketing



Android system



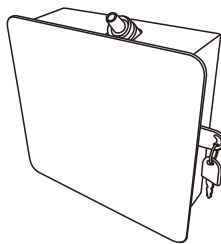
IOS system

If the QR code cannot be scanned, please search for "Scent Marketing" in Google play or APP store.



01 Specification

- [Model] A501
- [Size] 236*240*77mm
- [Bottle] 500ml
- [Input] DC 12V == 0.3A MAX
- [Power] 3W
- [Coverage] 50m²/150m³/5300ft³
- [N.W.] 2.2kg
- [Material] plastic, acrylic



Bottle



Key



Screws

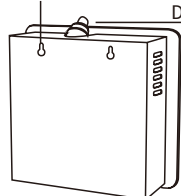


Manual



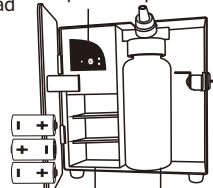
Plug

Wall mounted hole



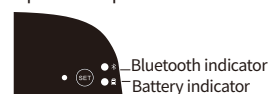
Diffuser head

Operation panel



Battery cover Bottle

Operation panel



Reset button

Setting button

(Reset the oil level, press and hold the SET button for 3 seconds)

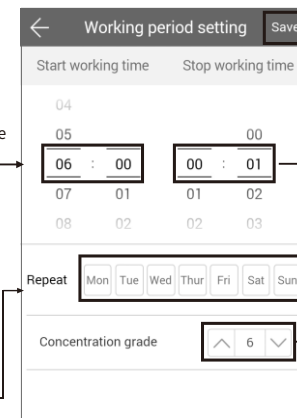
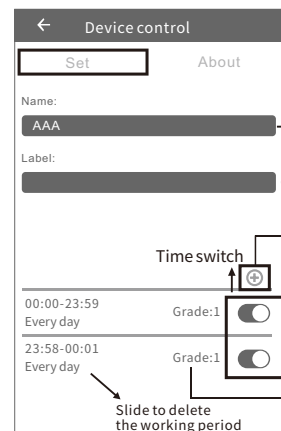
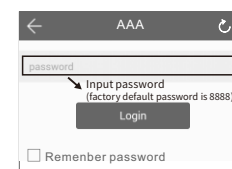
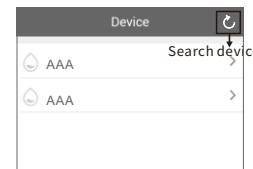
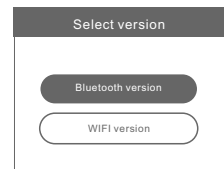
02 Bluetooth instruction

Where to get the app:

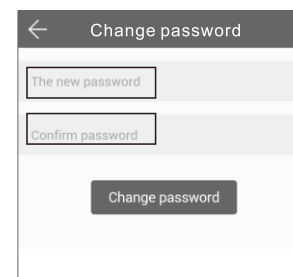
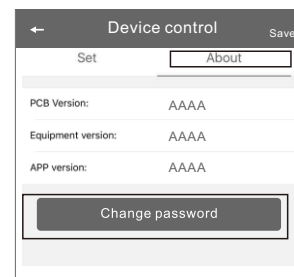
Please search for "scent marketing" in Google play or App store.

Note:

1. Please make sure that the Bluetooth function is turned on;
2. Please make sure that the location function of the mobile phone is turned on.

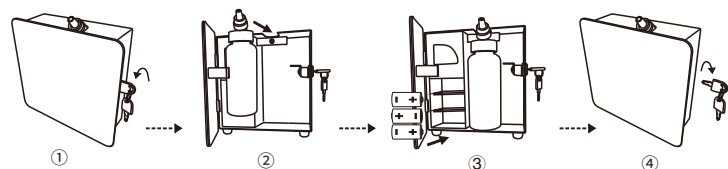


Amend password

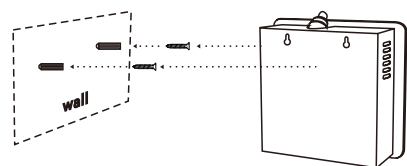


If you forget the password, please press the reset button to restore the factory setting. The factory settings password is 8888.

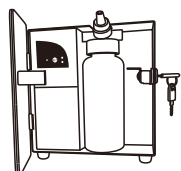
03 Installation step



1. Insert the key, twirl anticlockwise to unlock the door.
2. Tightly connect the atomizer head and the fragrance bottle, and install them to the machine.
3. Install the batteries according to the positive and negative terminals.
Note: 1. When the unit is connected by DC 12V adapter, the batteries stop supplying power, disconnect the DC 12V connection, the batteries start to supplying power
 2. After installing new batteries, the unit will work after 25s.
4. Insert the key and twirl clockwise to lock the door.



The distance of the screw hole
89mm



- ✧ **Bluetooth indicator:**
As usual, the bluetooth indicator is powered off. After connecting successfully and it will be flashing for reminder.
- ✧ **Battery indicator:**
When it lights for 30s stands for full charged, 5s flashing stands for low power and when it always lights, this machine will stop working.

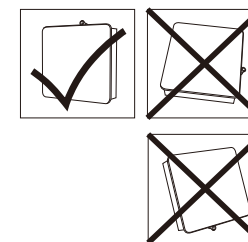
04 Concentration and Consumption

| Grade | Work time(s) | Stop time(s) | Consumption(g/h) |
|-------|--------------|--------------|------------------|
| G1 | 3s | 900s | 0.08 |
| G2 | 3s | 810s | 0.09 |
| G3 | 3s | 720s | 0.10 |
| G4 | 3s | 630s | 0.11 |
| G5 | 3s | 540s | 0.12 |
| G6 | 3s | 450s | 0.22 |
| G7 | 3s | 360s | 0.31 |
| G8 | 3s | 270s | 0.41 |
| G9 | 3s | 180s | 0.50 |
| G10 | 3s | 90s | 0.60 |

- Notes:**
1. 500ml oils can diffuse 11000-12500 times under normal circumstances;
 2. All of the above grade atomization work time is 3 seconds;
 3. Different grade and oil may with different consumption.

05 ⚠ Warning

1. Please keep the machine vertical. Tilt or lie flatly may cause oil overflow. The machine efficiency may be affected.
2. Shall not modify, disassemble or repair the machine. If any failure happens to the machine, please contact our technical personnel.



06 Troubleshooting

Before asking to have the machine repaired, please try to diagnose the problem first following to below instructions.

| Breakdown | Solution |
|------------------|--|
| Does not diffuse | <ul style="list-style-type: none"> - Check whether the batteries are loose or in low battery situation - If the machine is in "not working period", it stops diffuse. - Check whether the air pump is normal or not. - Check whether the gasket is damaged/loose or not. |
| Spray little | <ul style="list-style-type: none"> - Check whether the gasket is damaged; - Check whether the atomized core is plugged or not; - Check whether the cap of the atomized head is loose or. |
| Oil spill | <ul style="list-style-type: none"> - Whether the atomized head is damaged or not. |
| Abnormal sound | <ul style="list-style-type: none"> - Pump is loose, install it correctly; - The pump is damaged, change a new one. |

07 Equipment cleaning

The machine needs to be cleaned when below situations happen:

1. You're about to change to another kind of essential oil;
2. The atomization volume becomes weak.

Cleaning steps:

1. Pull out the atomized head, loose the bottle.
2. Find a larger container and fill the industrial alcohol up, then soak the atomized head and the bottle for 5-10mins.
3. Airing the atomized head and the bottle.

Note:

1. After cleaning the device, turn on the unit, press and hold SET button for 3 seconds to reset remaining oil level;
2. After spraying 3 seconds, the unit will stop 2 seconds, then it will spray 50 milliseconds for clearing the remaining oil in the atomizer head, it is normal.

FCC Statement

This equipment has been tested and found to comply with the limits for a Class B digital device, pursuant to part 15 of the FCC Rules.

These limits are designed to provide reasonable protection against harmful interference in a residential installation. This equipment generates, uses and can radiate radio frequency energy and, if not installed and used in accordance with the instructions, may cause harmful interference to radio communications. However, there is no guarantee that interference will not occur in a particular installation. If this equipment does cause harmful interference to radio or television reception, which can be determined by turning the equipment off and on, the user is encouraged to try to correct the interference by one or more of the following measures:

- Reorient or relocate the receiving antenna.
- Increase the separation between the equipment and receiver.
- Connect the equipment into an outlet on a circuit different from that to which the receiver is connected.
- Consult the dealer or an experienced radio/TV technician for help.

Caution: Any changes or modifications to this device not explicitly approved by manufacturer could void your authority to operate this equipment.

This device complies with part 15 of the FCC Rules. Operation is subject to the following two conditions: (1) This device may not cause harmful interference, and (2) this device must accept any interference received, including interference that may cause undesired operation.

RF Exposure Information

This equipment complies with FCC radiation exposure limits set forth for an uncontrolled environment. This equipment should be installed and operated with minimum distance 20cm between the radiator and your body.