

# PRODUCT MANUAL

## Aroma Diffuser



Scent marketing

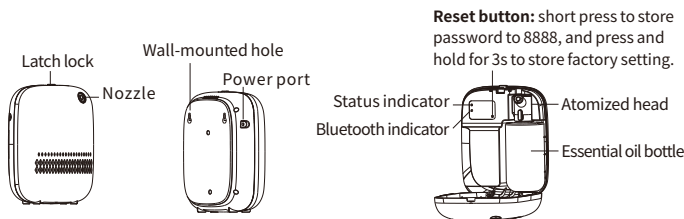
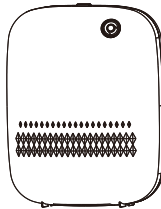


If the QR code cannot be scanned, please search for "Scent Marketing" in Google play or APP store.



### 01 Specification

[ Model ]	A320
[ Size ]	160*82*198.5mm
[ Bottle ]	400ml
[ Input ]	12V = 1A
[ Power ]	5W
[ Coverage ]	160m <sup>2</sup> /480m <sup>3</sup> /16950ft <sup>3</sup>
[ N.W. ]	0.74kg
[ Material ]	Plastic



**Reset button:** short press to store password to 8888, and press and hold for 3s to store factory setting.

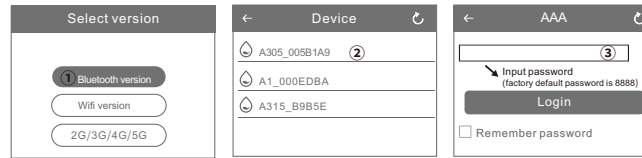
### 02 Bluetooth instruction

#### Where to get the app:

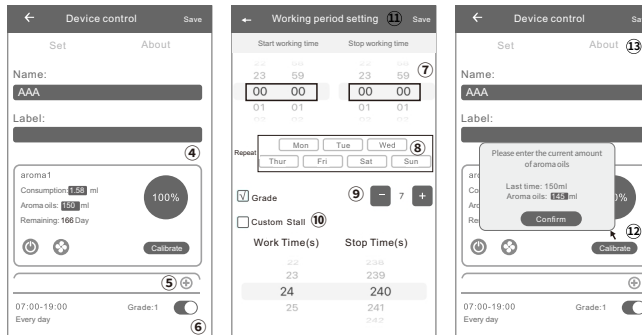
Please search for "Scent Marketing" in Google play or APP store.

#### Note:

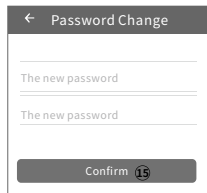
Make sure that the location function of Bluetooth and mobile phone is enabled.



1. Open the scent marketing app and select Bluetooth.
2. Select your device.
3. Enter the default password 8888 and press Login.



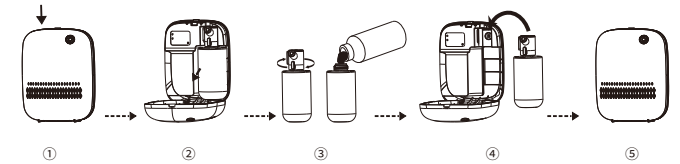
4. On the Device Control page; You can change your device name and label information of your scent diffuser. **NOTE:** Press the "Save" button at the top right corner of the screen after each change.
5. Different schedules by pressing the "+" button. To delete a schedule, swipe left.
6. Press the toggle button to turn on/off any schedule.
7. On the "Working period setting" page, Set the hours of the day you want your diffuser to run by scrolling the "Start working time" and "Stop working time".
8. Select the days of the week you want your diffuser to run (all days are pre-selected).
9. Press "+" or "-" to increase or decrease the preset intensity grades (1-20. See chart for details).
10. Check (✓) the Custom box to create a custom intensity and scroll the "Spray Time" and "Pause Time".
11. Press the "Save" button to update the Settings.
12. Tap "Calibrate" to calibrate consumption. It is advised to calibrate after working for at least 10 days. Please measure the remaining oil of the bottle first before starting calibrating. Enter the current essential oil volume, then click "Confirm" to update the consumption and remaining days automatically.
13. Change the default password by pressing on the "About" tab, in the "Device control".



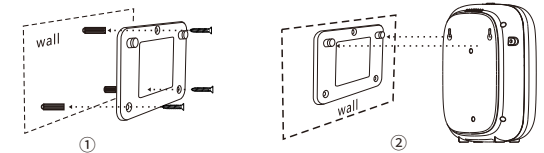
15. Enter a new four-digit password, then click "Confirm".

**Note:** If you forget the password, please press the reset button to restore the factory setting. The factory settings password is 8888.

### 03 Installation Step

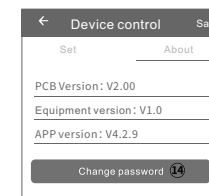


1. Press down on the latch lock on the machine to open it;
2. Take out the bottle;
3. Twist off the atomized head, refill the bottle with essential oil, then securely screw the bottle;
4. Align the position and place the bottle back into the machine;
5. Lock the machine;
6. In order to achieve a better fragrance effect, we recommended to use the essential oil SCENTA provide. For specific ingredients, please check SCENTA website or consult customer service, Add oil no more than 400ml.



1. Drill the 3 screws into wall;
2. Hang the machine to the screws.

**Note:** Be sure that ceramic tile or wood surface is clean and flat before you apply the wall tape.



14. Press the "Password Change" to access the password change page.

## 04 Concentration and consumption

Grade	Work time(s)	Stop time(s)	Consumption(g/h)
G1	15s	300s	0.10
G2	15s	150s	0.10
G3	20s	120s	0.24
G4	20s	85s	0.38
G5	25s	80s	0.40
G6	30s	75s	0.48
G7	30s	60s	0.56
G8	30s	50s	0.63
G9	30s	40s	0.72
G10	30s	33s	0.90
G11	33s	30s	0.92
G12	40s	30s	0.96
G13	50s	30s	1.05
G14	60s	30s	1.12
G15	75s	30s	1.20
G16	80s	25s	1.28
G17	85s	20s	1.36
G18	120s	20s	1.44
G19	150s	15s	1.53
G20	300s	15s	1.60
Customized	3-300s	5-500s	—

- Note:** 1. The above data is for reference only. If customers use essential oils with different viscosities, the oil consumption will vary;
2. For the best diffusion effect, it's recommended to use essential oils with a viscosity below 30mPa.s. And the optimal working temperature is 25°C.

## 05 ⚠ Warning

1. Please keep the machine vertical;  
Tilt or lie flatly may cause oil overflow;  
The machine efficiency may be affected.



2. Shall not modify, disassemble or repair the machine. If any failure happens to the machine, please contact our technical personnel.



3. Shall not damage the power cord forcibly, such as bend, yank, heavy load, clip or reprocess it; Shall not use the broken or unmatched plug with the socket.

4. The appliance is only to be used with the recommended vaporizing medium. The use of other substances may give rise to a toxic or fire risk.

## 06 FCC ID+IC ID Warning

Caution: The user is cautioned that changes or modifications not expressly approved by the party responsible for compliance could void the user's authority to operate the equipment.

This device contains licence-exempt transmitter(s)/receiver(s) that comply with Innovation, Science and Economic Development Canada's licence-exempt RSS(s) and Part 15 of the FCC Rules. Operation is subject to the following two conditions:  
(1) This device may not cause interference.  
(2) This device must accept any interference, including interference that may cause undesired operation of the device.

L' émetteur/récepteur exempt de licence contenu dans le présent appareil est conforme aux CNR d' Innovation, Sciences et Développement économique Canada applicables aux appareils radio exempts de licence. L' exploitation est autorisée aux deux conditions suivantes :

- (1) L' appareil ne doit pas produire de brouillage;  
(2) L' appareil doit accepter tout brouillage radioélectrique subi, même si le brouillage est susceptible d' en compromettre le fonctionnement.

**NOTE:** This equipment has been tested and found to comply with the limits for a Class B digital device, pursuant to Part 15 of the FCC Rules. These limits are designed to provide reasonable protection against harmful interference in a residential installation. This equipment generates, uses and can radiate radio frequency energy and, if not installed and used in accordance with the instructions, may cause harmful interference to radio communications. However, there is no guarantee that interference will not occur in a particular installation. If this equipment does cause harmful interference to radio or television reception, which can be determined by turning the equipment off and on, the user is encouraged to try to correct the interference by one or more of the following measures:  
-- Reorient or relocate the receiving antenna.  
-- Increase the separation between the equipment and receiver.  
-- Connect the equipment into an outlet on a circuit different from that to which the receiver is connected.  
-- Consult the dealer or an experienced radio/TV technician for help.

### FCC& IC Radiation Exposure Statement:

This equipment complies with FCC and Canada radiation exposure limits set forth for an uncontrolled environment. This equipment should be installed and operated with a minimum distance of 20cm between the radiator and your body.

This transmitter must not be co-located or operating in conjunction with any other antenna or transmitter.

### Déclaration d' IC sur l' exposition aux radiations:

Cet équipement est conforme aux limites d' exposition aux radiations définies par le Canada pour des environnements non contrôlés. Cet équipement doit être installé et utilisé à une distance minimum de 20 cm entre l' antenne et votre corps.

Cet émetteur ne doit pas être installé au même endroit ni utilisé avec une autre antenne ou un autre émetteur.

## 07 Troubleshooting

Before asking to have the machine repaired, please try to diagnose the problem first following to below instructions.

Breakdown	Solution
No diffuse	- Check if the power is ON or OFF; - The pump is damaged and needs replacing; - If there is no diffusion or it is weak, replace the oil with rubbing alcohol and run it through the machine for 5 minutes.
Little or no spray coming out	- Atomization head is blocked. Clean diffuser by running rubbing alcohol through it. Or replace diffuser core; - Diffuser core with straw is missing or damaged. Replace with a new one; - Pump is damaged and may need replacing.
Diffuser spraying liquid	- Diffuser core is damaged, Replace diffuser core. - Machine is tilted or angled, Make sure it's upright at all times.
Oil leaking	- Bottle is loose. Screw it in properly and straight; - Seal is broken or missing. Replace the supplied seal that came with the machine.
Abnormal sound	- Pump is loose or damaged, Tighten the pump or replace.
No display on screen	- Make sure the power is ON; - Check the plug for damage, Try another outlet, If plug is damaged replace; - Display screen is damaged, Replace.

## 08 Equipment cleaning

**The machine needs to be cleaned when below situations happen:**

1. You're about to change to another kind of essential oil;
2. The atomization volume becomes weak.

### Cleaning steps:

1. Find a clean bottle and fill it with industrial alcohol;
2. Install this bottle to the machine and turn the machine on.  
Let it work for 5-10 minutes;
3. Turn off the electric, finish the cleaning.