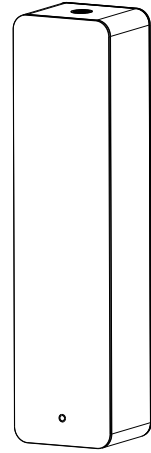


PRODUCT MANUAL

Aroma diffuser



Scent marketing



Android system

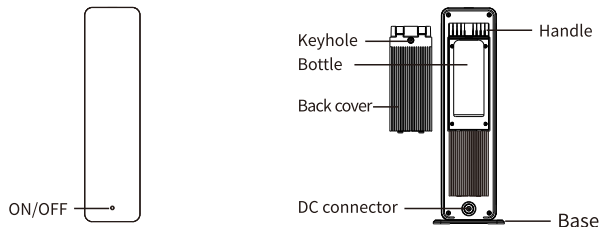
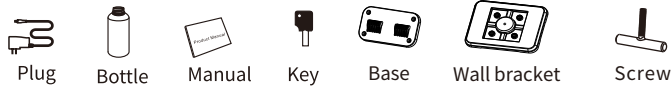


IOS system

If the QR code cannot be scanned, please search for "ScentMarketing" in Google play or APP store.

01 Specification

- [Model] A316
- [Size] 195*150*585mm
- [Bottle] 1000ml
- [Input] DC12V == 2A MAX
- [Power] 12W
- [Coverage] 900m²/2700m³/6350ft³
- [N.W.] 3.6kg
- [Material] Plastic, metal



02 Bluetooth instruction

Where to get the app:

Please search for "Ecoappl" in Google play or App store.

Note:

1. Please make sure that the Bluetooth function is turned on;
2. Please make sure that the location function of the mobile phone is turned on.

Consumption: This value is calculate based on one hour of continuous machine work with 13 mPa.s aroma oil of our company. But aroma oils with different viscosities have varied consumption rates, you can calibrate it via app.

Aroma oil: The amount of aroma oil added to bottle.

Remaining: This refers to how long the aroma oil can be used based on consumption, aroma oil, grade, and working periods.

Turn ON/OFF the device
Turn ON/OFF the fan

Calibrate: It is used for calibrating consumption. It is advised to calibrate after working for at least 10 days. Please measure the remaining oil of bottle first, then tap "calibrate" in the APP, input the amount of remaining oil, and confirm. So the consumption, remaining day, and percentage will be updated.

Timing switch, left slide to delete

Amend password

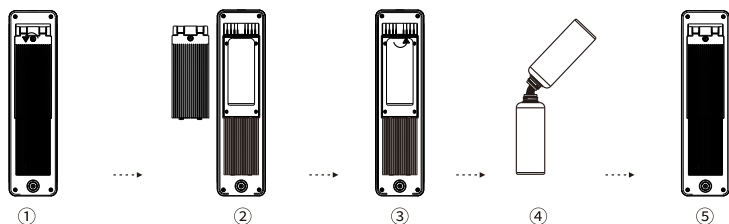
Slide up and down to adjust

Select the day

Select grade

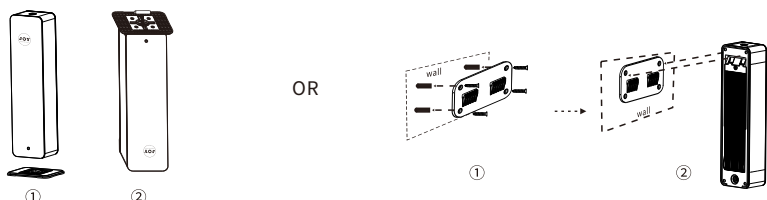
If you forget the password, please press the long press the ON/OFF button for 3s to restore factory setting. The factory settings password is 8888.

03 Installation step



1. Open the back cover with key;
2. Remove the back cover;
3. Twist off the bottle cap;
4. Add fragrance oil into the bottle;
5. Tighten the bottle cap, place the bottle back in the machine, and lock the back cover with a key.

Installation mode:



Floor standing:

1. Make sure the base is aligned with the 4 holes at the bottom of the machine, then fix the screws;
2. Align the base with the holes on the bottle of the machine, and secure it with screws.

Wall mount:

1. Drill the 4 screws into wall;
2. Hang the machine to the screws.

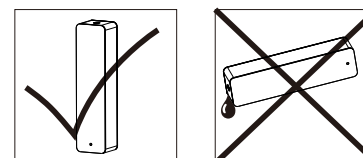
04 Concentration and Consumption

Grade	work(s)	intervals(s)	Consumption(g/h)
G1	15s	300s	0.2
G2	15s	150s	0.4
G3	20s	120s	0.7
G4	20s	85s	1.0
G5	25s	80s	1.2
G6	30s	75s	1.5
G7	30s	60s	1.7
G8	30s	50s	1.9
G9	30s	40s	2.2
G10	30s	33s	2.5
G11	33s	30s	2.7
G12	40s	30s	3.0
G13	50s	30s	3.2
G14	60s	30s	3.5
G15	75s	30s	3.7
G16	80s	25s	4.0
G17	85s	20s	4.2
G18	120s	20s	4.5
G19	150s	15s	4.7
G20	300s	15s	5.0
Customize	5-500s	5-500s	—

PS: 1.The data shown above was obtained based on our testing essential oil.
2.The consumption rate of different essential oils varies, the above data is only for reference, the actual data may prevail.

06 ⚠ Warning

1. Please keep the machine vertical after installation. Tilting or lying flat can cause oil to overflow, and the circuit board may be contaminated, which could affect its efficiency.
2. Should not modify, dismantle or repair the machine arbitrarily. Any malfunction occurs, please contact the relevant technician immediately.
3. The machine does not work when it is not in the programmed working period, even the atomization icon is displayed on the screen;
4. When the machine is in lock status, the button can not be operated and there is no any display on screen.



07 Troubleshooting

Before asking to have the machine repaired, please try to diagnose the problems first based on the following instructions.

Breakdown	Solution
Does not diffuse	-To check whether the mode you choose is correct or not; -The machine may not be in the programmed working period; -Air pump may be damaged, please replace a new one; -To check whether the tube is loose or not.
Weak diffusion	-The atomizing core may be blocked, please clean it by alcohol or replace a new component; -The gasket may be damaged/loose. -The air tube may be loose.
Oil leakage	-The bottle cap may not be tight; -The gasket in the atomizer head may be damaged or loose.
Oil sprinkle	-The atomizer head is damaged, please replace a new one; -The machine may be tilted or set flat, please keep the machine upright.
Abnormal noise	-The air pump may be loose, please tighten the pump; -The air pump may be damaged, please replace a new one.

08 Equipment cleaning

The machine needs to be cleaned when the following situations happen:

1. You're about to replace another essential oils;
2. The atomization volume becomes weak .

Cleaning steps:

1. Find a clean bottle and fill it with industrial alcohol.
2. Add industrial alcohol into bottle about 15%, and make it diffuse 5 minutes.
3. Air the atomized head and the bottle.

FCC Statement

This equipment has been tested and found to comply with the limits for a Class B digital device, pursuant to part 15 of the FCC Rules.

These limits are designed to provide reasonable protection against harmful interference in a residential installation. This equipment generates, uses and can radiate radio frequency energy and, if not installed and used in accordance with the instructions, may cause harmful interference to radio communications. However, there is no guarantee that interference will not occur in a particular installation. If this equipment does cause harmful interference to radio or television reception, which can be determined by turning the equipment off and on, the user is encouraged to try to correct the interference by one or more of the following measures:

- Reorient or relocate the receiving antenna.
- Increase the separation between the equipment and receiver.
- Connect the equipment into an outlet on a circuit different from that to which the receiver is connected.
- Consult the dealer or an experienced radio/TV technician for help.

Caution: Any changes or modifications to this device not explicitly approved by manufacturer could void your authority to operate this equipment.

This device complies with part 15 of the FCC Rules. Operation is subject to the following two conditions: (1) This device may not cause harmful interference, and (2) this device must accept any interference received, including interference that may cause undesired operation.

RF Exposure Information

This equipment complies with FCC radiation exposure limits set forth for an uncontrolled environment. This equipment should be installed and operated with minimum distance 20cm between the radiator and your body.