

Test Setup Photos

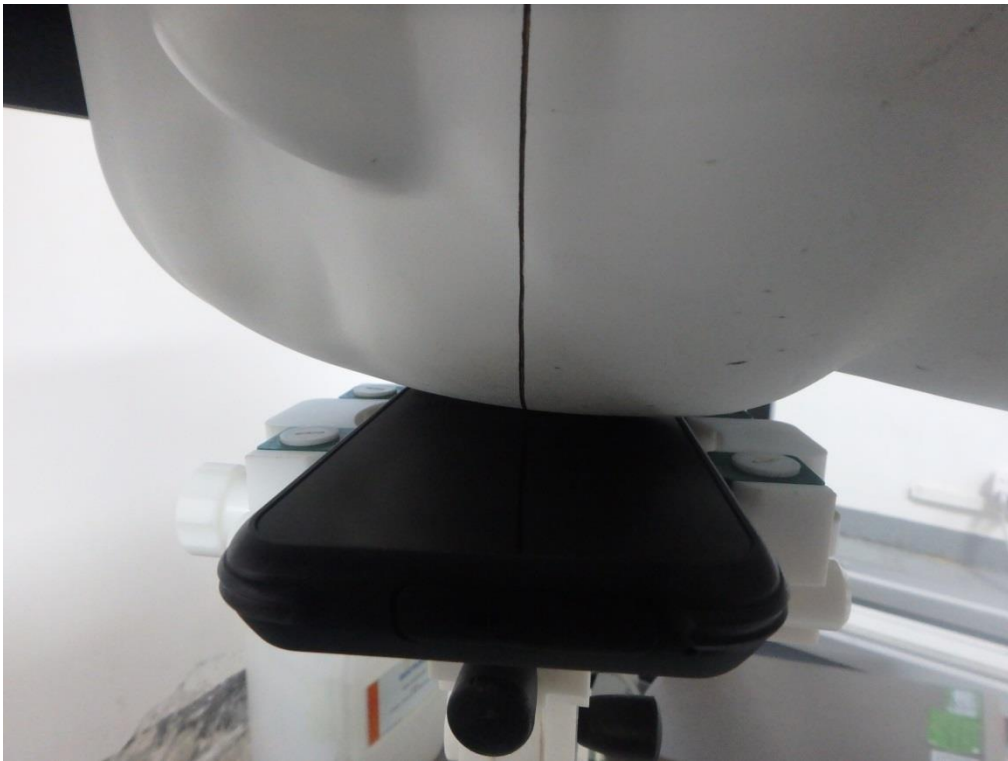
LEFT-CHEEK TOUCH



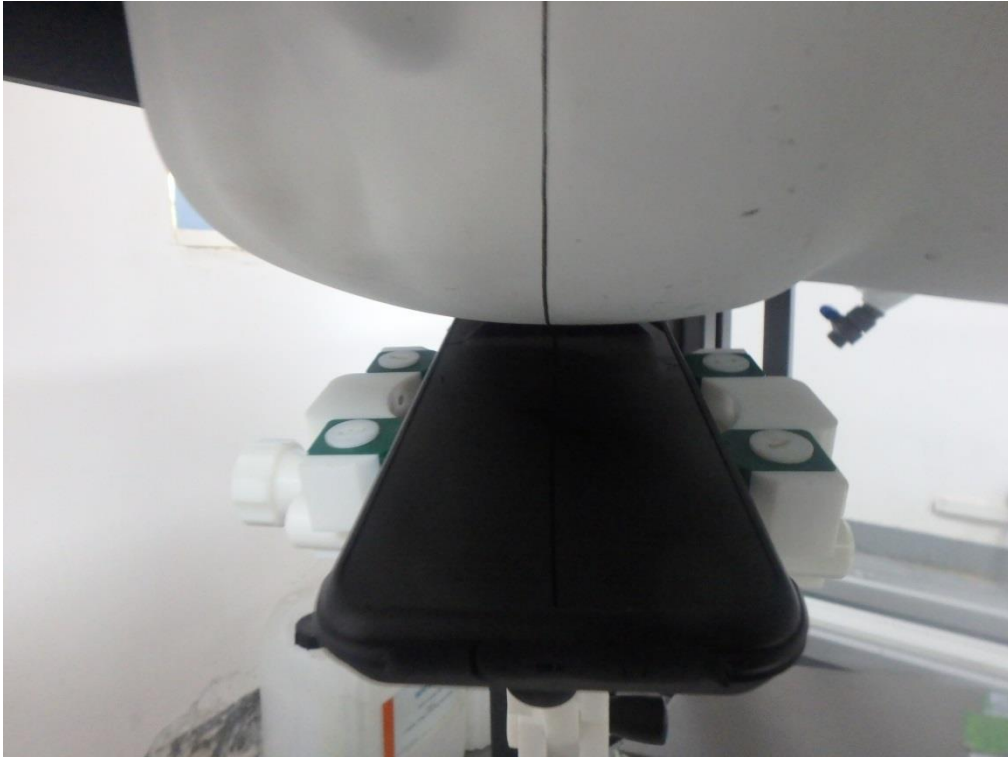
LEFT-TILT 15°



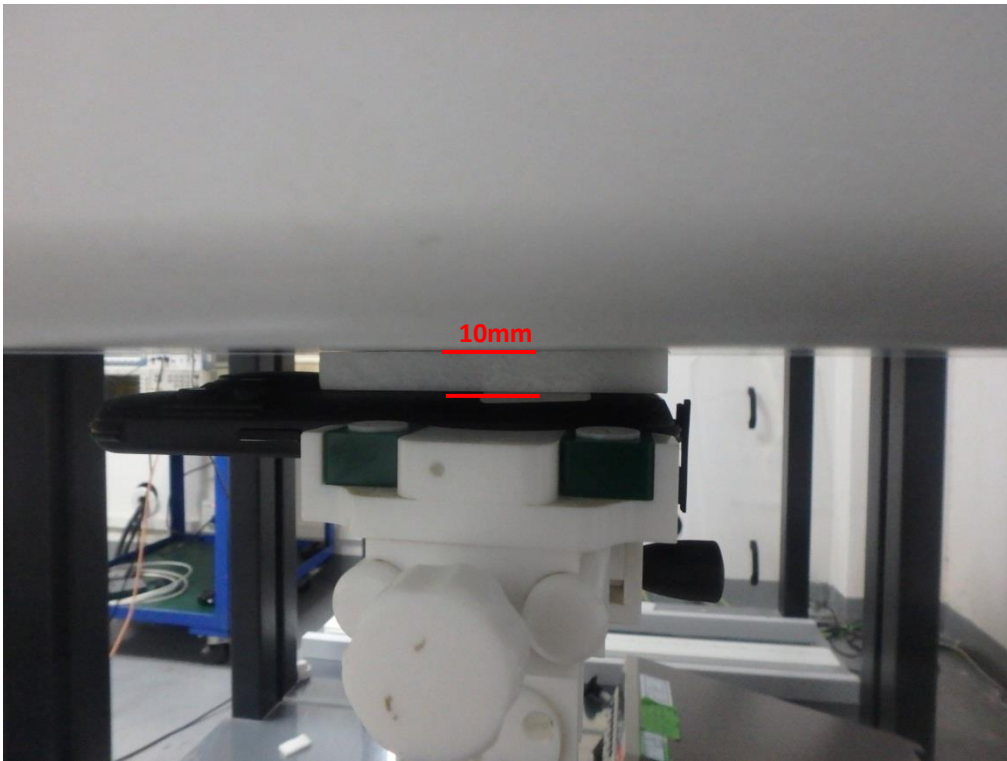
RIGHT- CHEEK TOUCH



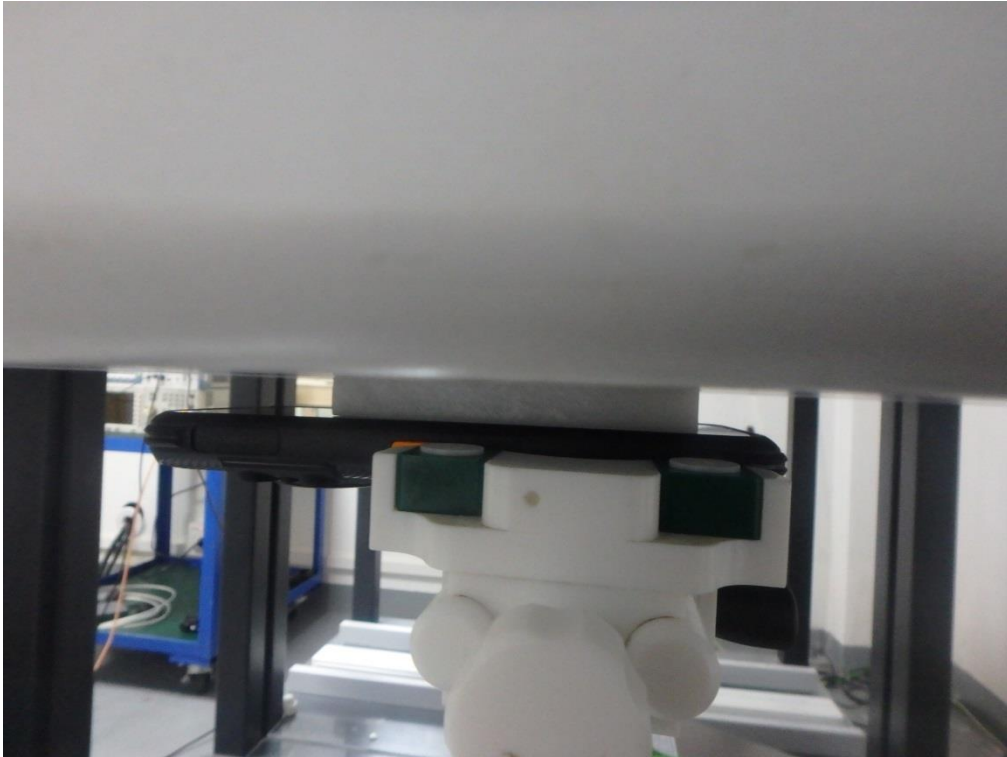
RIGHT-TILT 15⁰



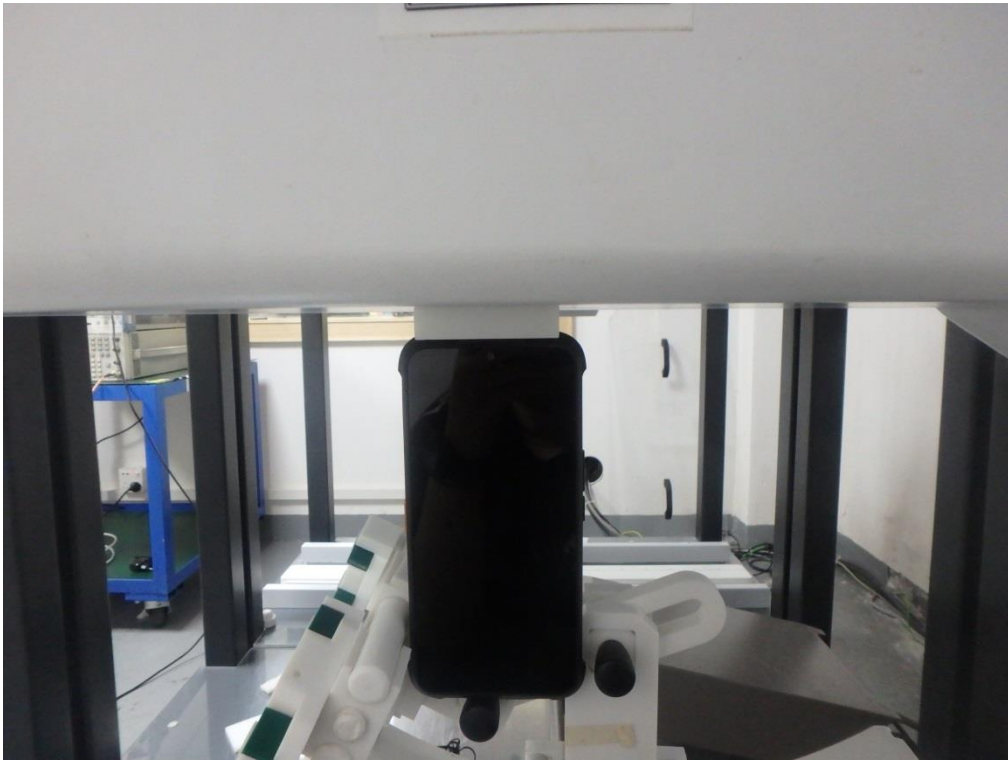
Body Back 10mm



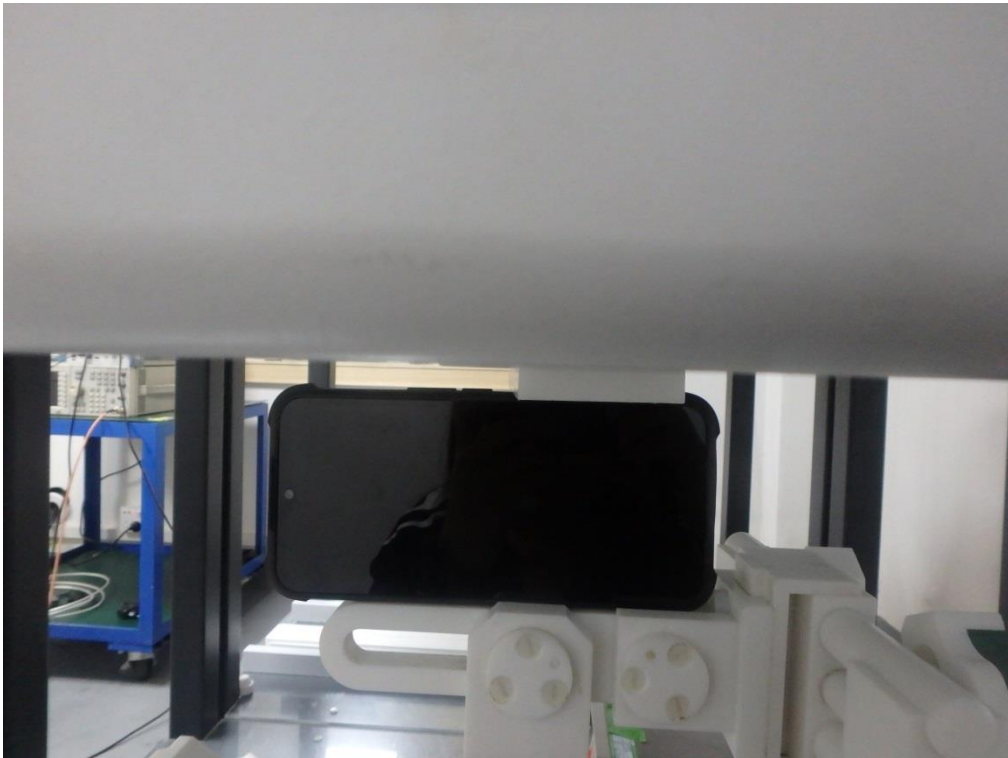
Body Front 10mm



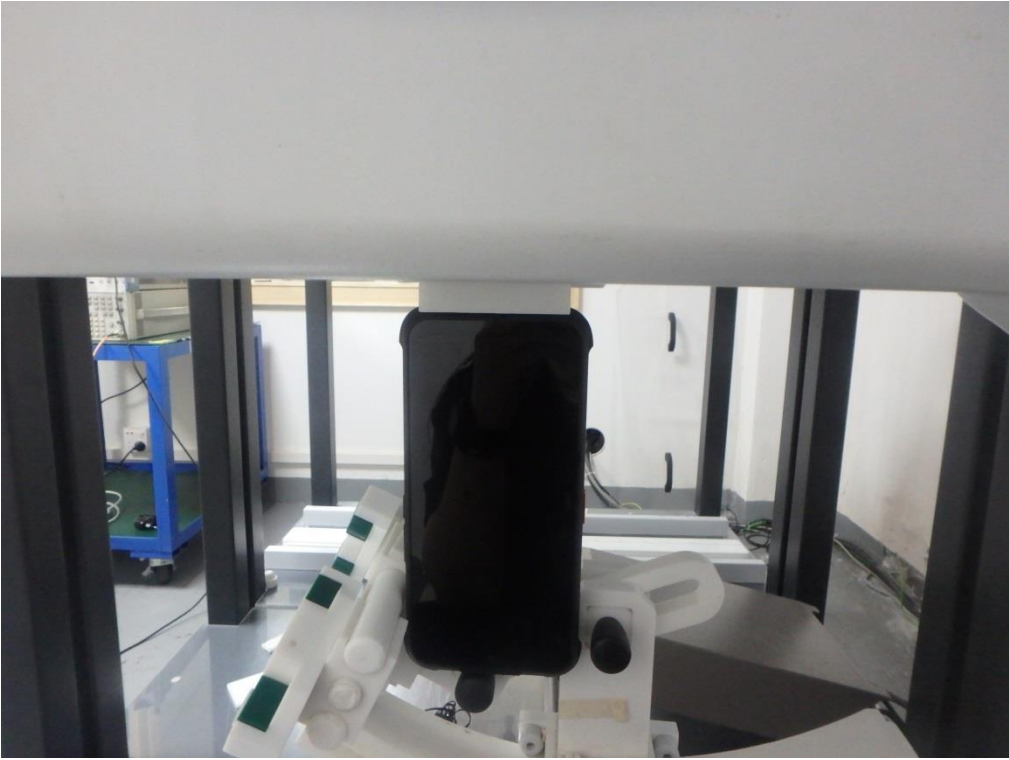
Edge 1(Top) Hotspot 10mm



Edge 2(Right) Hotspot 10mm



Edge 3(Bottom) Hotspot 10mm



Edge 4(Left) Hotspot 10mm



Edge 3(Bottom) with Headset 10mm



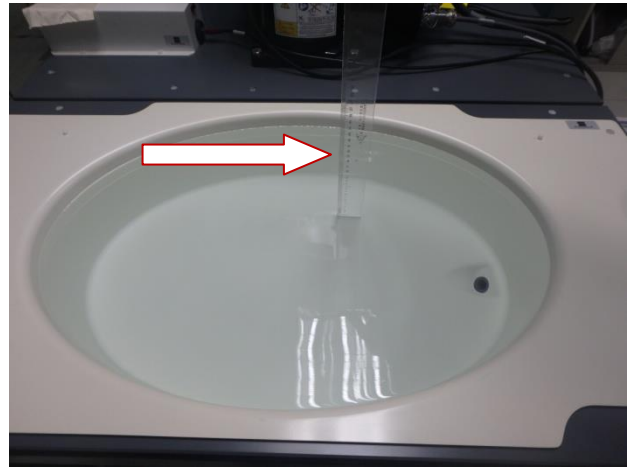
DEPTH OF THE LIQUID IN THE PHANTOM—ZOOM IN

Note : The position used in the measurement were according to IEEE 1528-2013

750MHz head



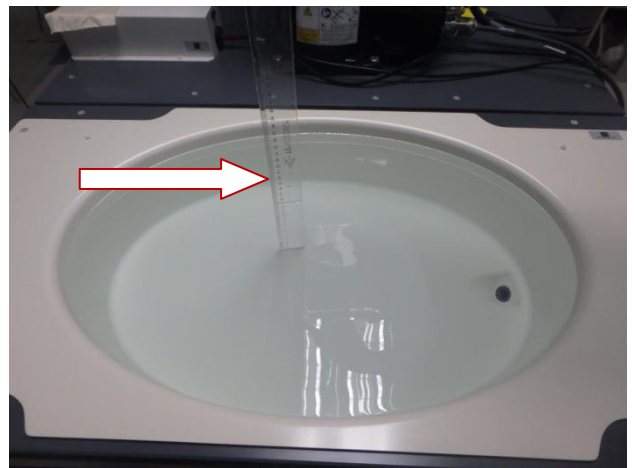
750MHz body



835MHz head



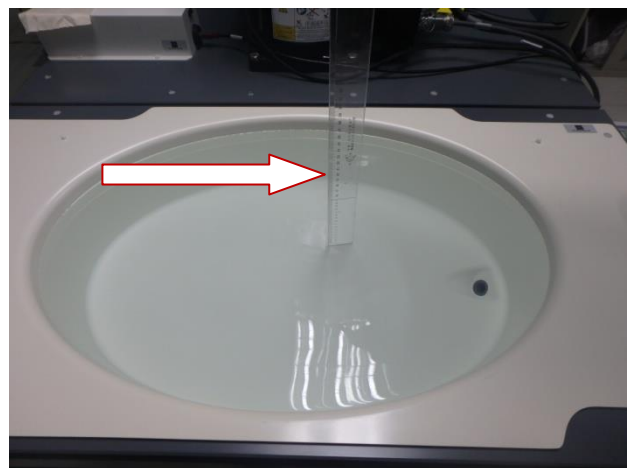
835MHz body



1900MHz head



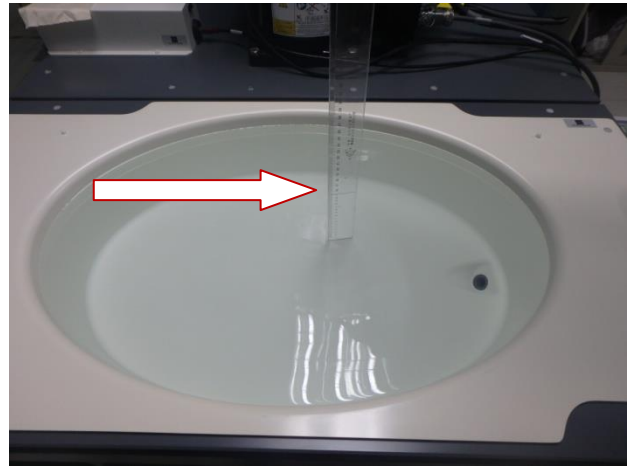
1900MHz body



1750MHz head



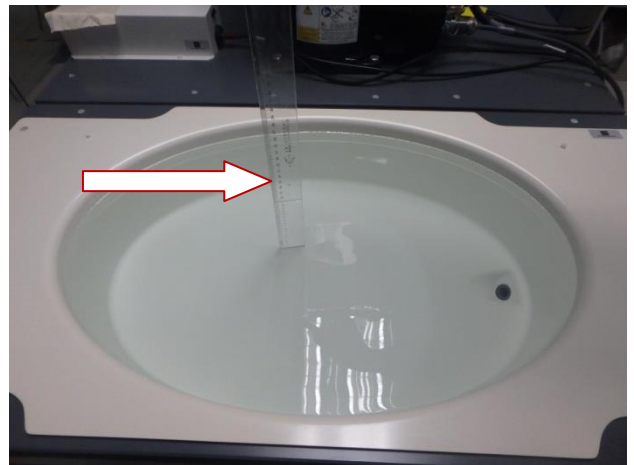
1750MHz body



2300MHz head



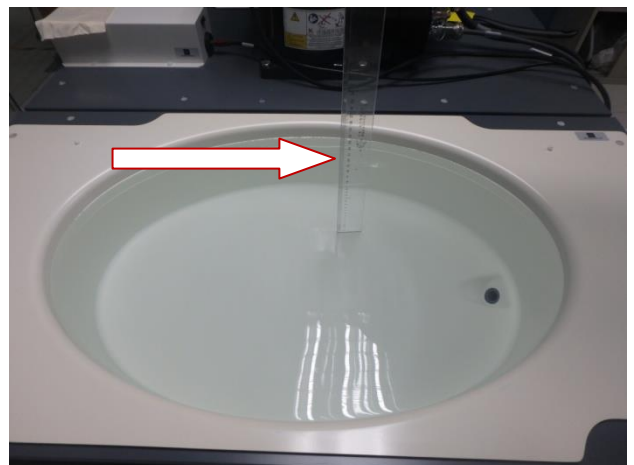
2300MHz body



2450MHz head



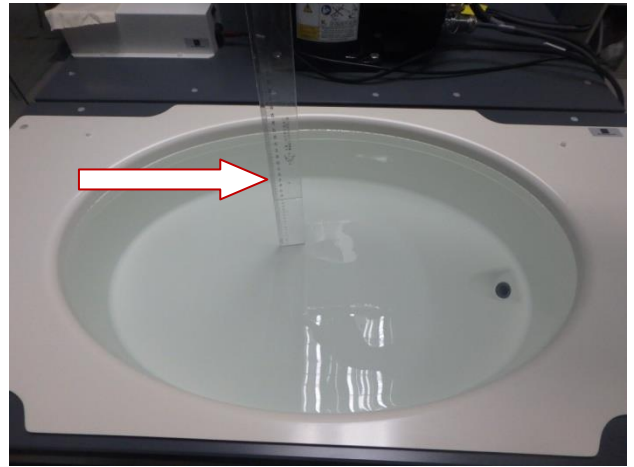
2450MHz body



2600MHz head



2600MHz body



5000MHz head



5000MHz body

