

ENT Antenna specification

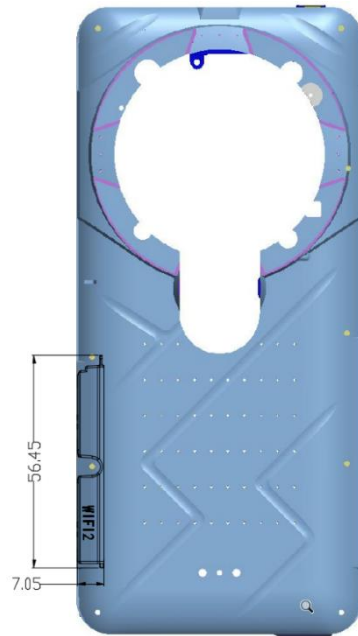
Antenna type: PIFA

Model: ENT-WiFi-V2

Manufacturer: Shenzhen 3Good Wireless Communication Co., Ltd

Band: WIFI2.4G/5G, 2400MHz~2500MHz&5150MHz~ 5850MHz

1. Picture1 -Antenna position and size



All of Implementation antenna

WiFi 2: 2.4G: 2400MHz~2500MHz,5G: 5150MHz~ 5850MHz

o Number of antennas: (number, as well as whether they are external, internal, removable or fixed)

one internal antennas, the position above picture1

o Brand of the antenna: (brand, unless it has no brand we will put it without brand)

Manufacturer: 3Good Wireless

WiFi 2: ENT-WiFi-V2

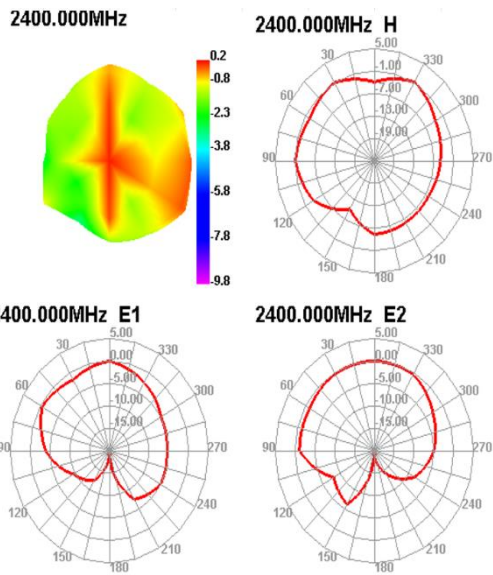
o Model of the antenna: (It is suggested to declare without model if you do not have this unless otherwise indicated)

WiFi 2: PIFA (LDS)

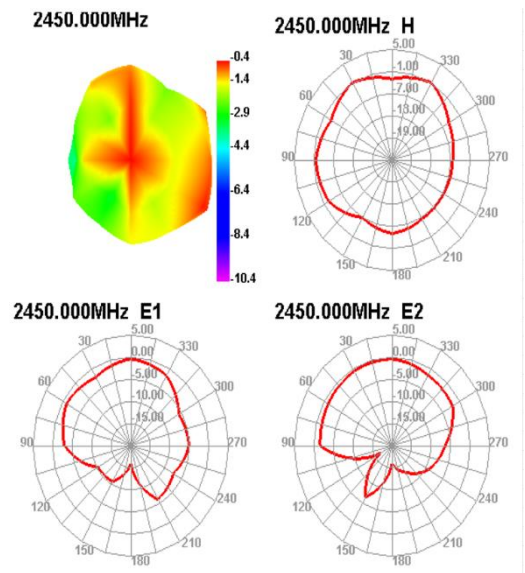
o Antenna gain: (dBi)

	Frequency (MHz)	Gain(dBi)
WIFI2. 4G	2400	0.2
	2450	-0.4
	2483.5	-0.6
WIFI5G	5150-5250	-1.0
	5280-5350	-1.0
	5470-5725	2.0
	5725-5850	0.9

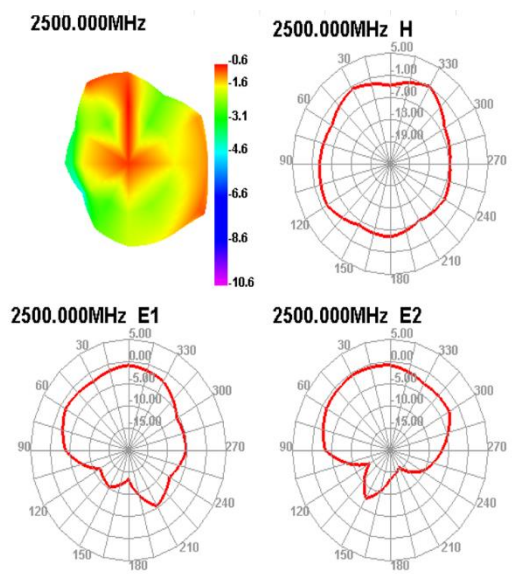
3D_Graphs
2400MHz



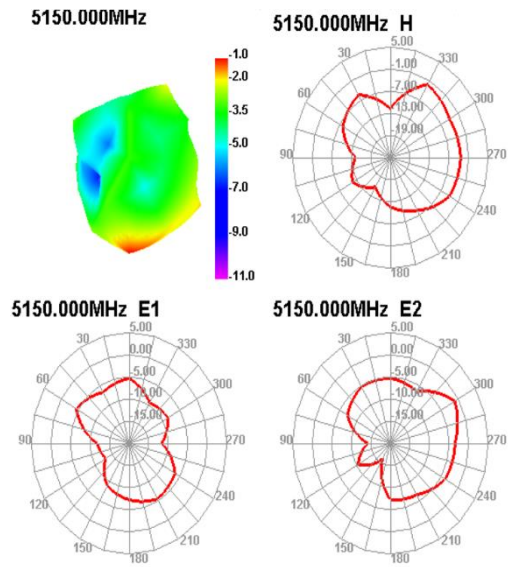
2450MHz



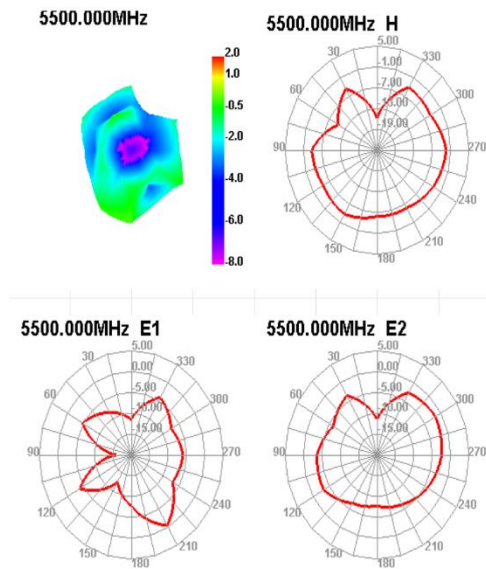
2500 MHz



5150MHz



5500MHz



5850 MHz

