

ENT Antenna specification

Antenna type: PIFA

Model: ENT-GWB-V3

Manufacturer: Shenzhen 3Good Wireless Communication Co., Ltd

Band: WIFI2.4G/5G/BT, 2400MHz~2500MHz&5150MHz~ 5850MHz

1. Picture1 -Antenna position and size



All of Implementation antenna

WiFi/BT 2.4G: 2400MHz~2500MHz

WiFi5G: 5150MHz~ 5850MHz

2. o Number of antennas: (number, as well as whether they are external, internal, removable or fixed)

one internal antennas, the position above picture1

o Brand of the antenna: (brand, unless it has no brand we will put it without brand)

Manufacturer: 3Good Wireless

WIFI/BT: ENT-GWB-V3

WIFI5G: ENT-GWB-V3

o Model of the antenna: (It is suggested to declare without model if you do not have this unless otherwise indicated)

WIFI/BT: PIFA (LDS)

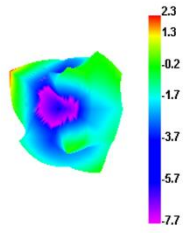
WIFI5G: PIFA (LDS)

o Antenna gain: (dBi)

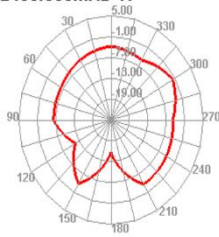
	Frequency (MHz)	Gain (dBi)
WIFI2. 4G/BT	2400	0.5
	2450	0.62
	2483.5	0.23
WIFI5G	5150-5250	1.23
	5280-5350	1.23
	5470-5725	1.23
	5725-5850	1.23

3D_Graphs
2400MHz

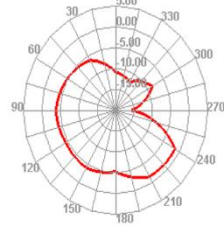
2400.000MHz



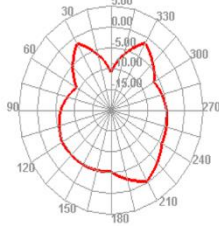
2400.000MHz H



2400.000MHz E1

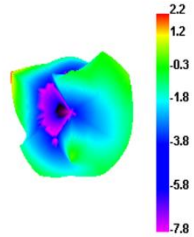


2400.000MHz E2

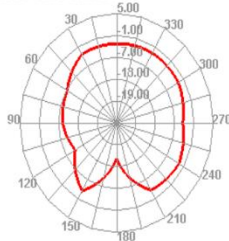


2450MHz

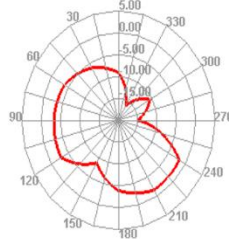
2450.000MHz



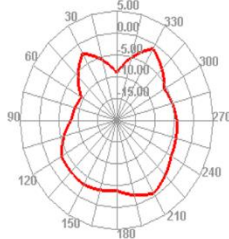
2450.000MHz H



2450.000MHz E1

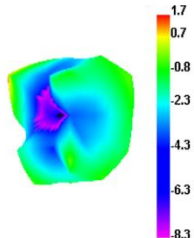


2450.000MHz E2

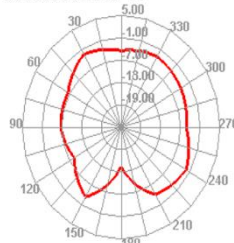


2500 MHz

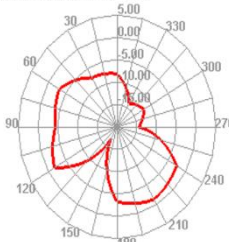
2500.000MHz



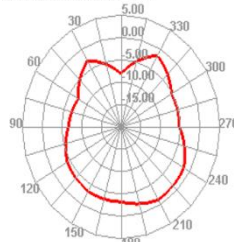
2500.000MHz H



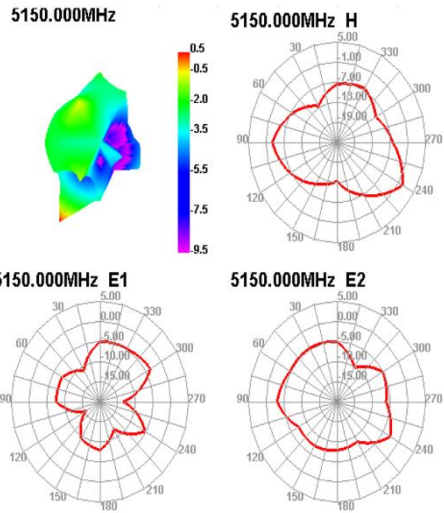
2500.000MHz E1



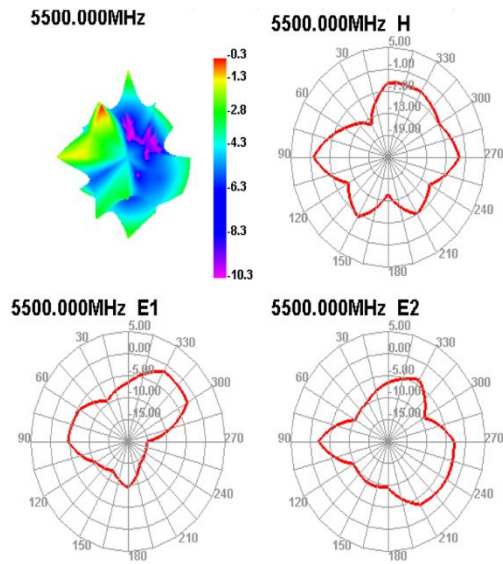
2500.000MHz E2



5150MHz



5500MHz



5850 MHz

