

USER MANUAL

PROJECTOR

CONTENTS

PACKAGE LIST	2
PROJECTOR SPECIFICATIONS	2
PROJECTOR OVERVIEW	3
REMOTE CONTROL	4
INSTALLATION	5
1. Installation Method	5
2. Projection Distance and Size	6
3. Install on the Ceiling	6
IMAGE ADJUSTMENT	7
1. Manual Keystone Correction	7
2. Focus Adjustment	8
SETTING UP THE PROJECTOR	9
1. Select The Input Signal Source	9
2. USB Disk Input Mode	9
3. Wireless Connection	9
3.1 Android Screen (for Android devices)	10
3.2 iOS Screen (for iOS devices)	12
4. Wired connection	13
4.1 iOS Wired connection	13
4.2 Android Wired connection	13
5. AirPlay Connection Method	15
DESCRIPTION OF THE PROJECTOR OSD MENU	16
1. Picture menu	16
2. Time set	17
3. Option menu	18
SIGNAL LINES CONNECTION	18
1. Connect to the AV Ports	19
2. 3.5mm audio connection	20
3. Connect to the Sound bar/Speaker	20
4. Connecting with Other Devices	20
BLUETOOTH CONNECTION METHOD	21
WARRANTY	22

FCC WARNING

This device complies with part 15 of the FCC Rules. Operation is subject to the following two conditions: (1) this device may not cause harmful interference, and (2) this device must accept any interference received, including interference that may cause undesired operation.

Any changes or modifications not expressly approved by the party responsible for compliance could void the user's authority to operate the equipment.

NOTE: This equipment has been tested and found to comply with the limits for a Class B digital device, pursuant to Part 15 of the FCC Rules. These limits are designed to provide reasonable protection against harmful interference in a residential installation. This equipment generates, uses and can radiate radio frequency energy and, if not installed and used in accordance with the instructions, may cause harmful interference to radio communications. However, there is no guarantee that interference will not occur in a particular installation.

If this equipment does cause harmful interference to radio or television reception, which can be determined by turning the equipment off and on, the user is encouraged to try to correct the interference by one or more of the following measures:

- Reorient or relocate the receiving antenna.
- Increase the separation between the equipment and receiver.
- Connect the equipment into an outlet on a circuit different from that to which the receiver is connected.
- Consult the dealer or an experienced radio/TV technician for help.

To maintain compliance with FCC's RF Exposure guidelines, This equipment should be installed and operated with minimum distance between 20cm the radiator your body: Use only the supplied antenna.

PACKAGE LIST

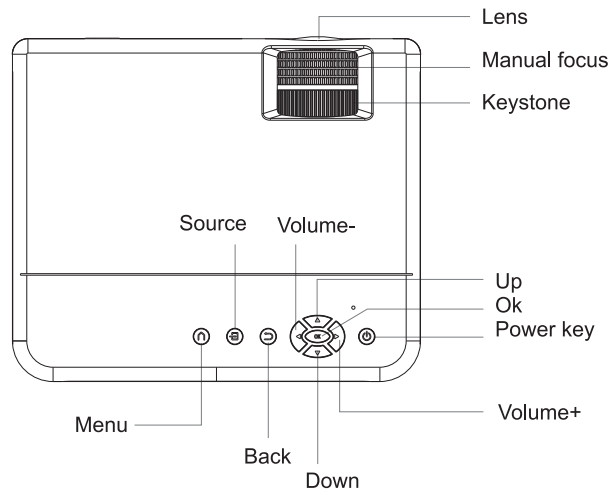
Projector*1	Remote Control*1	Power Cord*1
HDMI Cable*1	3-in-1 AV Cable*1	Lens Cover*1
Cleaning Cloth*1	User Manual*1	

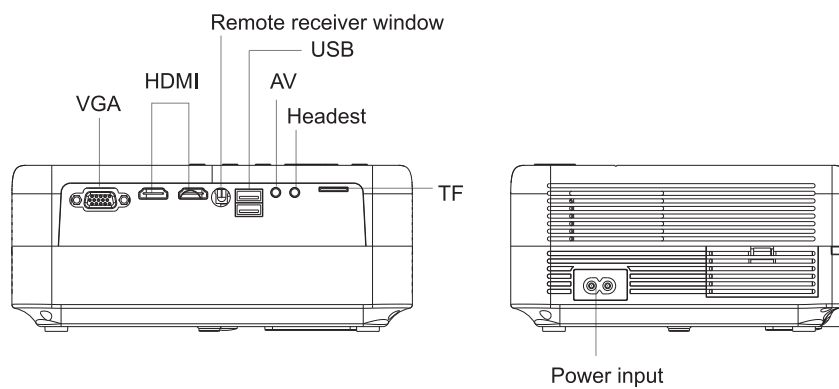
PROJECTOR SPECIFICATIONS

Model No : MKO26			
Native Resolution	1920*1080P	Keystone Correction	±15°
Display Technology	LCD	Light Source	LED
Color gamut	16.7M Full	Aspect Ratio	4:3/16:9

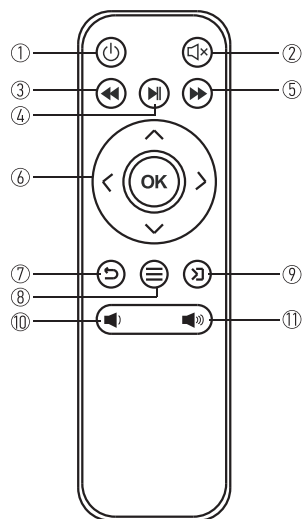
Recommended Projection Distance	4.13-8.2ft	Minimum Projection Distance	4.13ft
Power Voltage	AC 100-240V	Projector Weight	2.2lb
Picture File	JPG/JPEG/BMP/PNG	Interfaces	HDMI*2/USB*2/3.5mm Headphonejack/AV/VGATF
Video File	MPEG1、MPEG2、MPEG4、RM、RMVB、MOV、MJPEG、Divx、VOB、MKV		
Audio File	WMA、MP3、M4A (AAC)、APE、FLAC、WAV		

PROJECTOR OVERVIEW





REMOTE CONTROL



1		Turn on/off the power	7		Return to the previous menu
2		Close the sound	8		Pull up the menu

3	⏮	Rewind	9	⏪	Select the input signal source
4	⏸	Confirm the option/Play or pause the video	10	🔊	Volume down
5	⏭	Fast forward	11	🔊	Volume up
6	< >	Used to adjust the parameter of the projector in the menu mode			

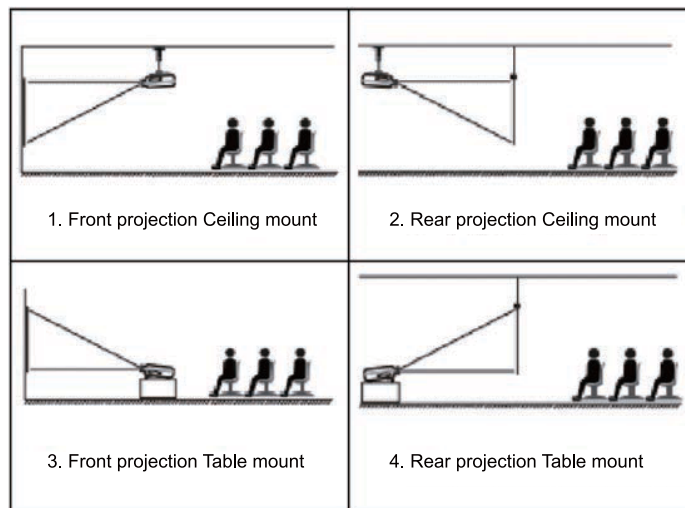
⚠ Note:

- 1). Install 2 pieces of AAA batteries into the remote before using it. Do not combine new batteries with old ones in remote controller, which can cause operation failure due to insufficient power supply.
- 2). When using the remote controller, please make sure that the signal transmitter of the remote controller aims at infrared signal receiver of the projector.
- 3). If you are not using the remote controller for an extended period, please take out batteries to prevent batteries leakage.

INSTALLATION

1. Installation Method

※ The projector can be hanged on the ceiling with special hanger frame, and placed on the table. Keep the projector at a height where its lens is axial symmetry to the screen. If this is not possible, use the keystone correction function to adjust the projection image.



2. Projection Distance and Size

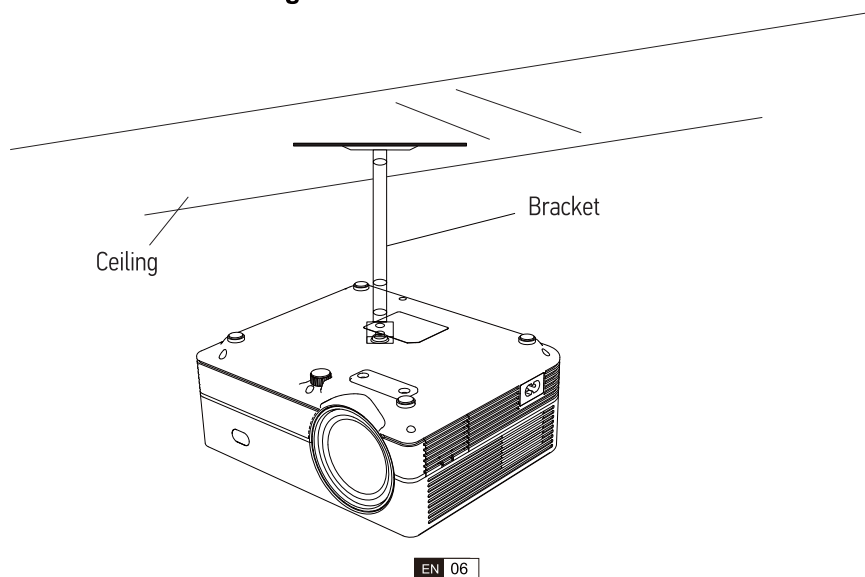
※ If you want to get a free projection screen, please contact us via

Aspect Ratio: 16:9	
Distance (ft.)	Screen Size
4.46	43"
5.74	60"
7.94	84"
9.61	120"

※ The recommended projection distance is about 5.74ft, the shortest projection distance is 4.46ft.

※ The image size depends on the distance between projector and screen, there may be 3% deviation among above listed data. Different settings cause various distances.

3. Install on the Ceiling



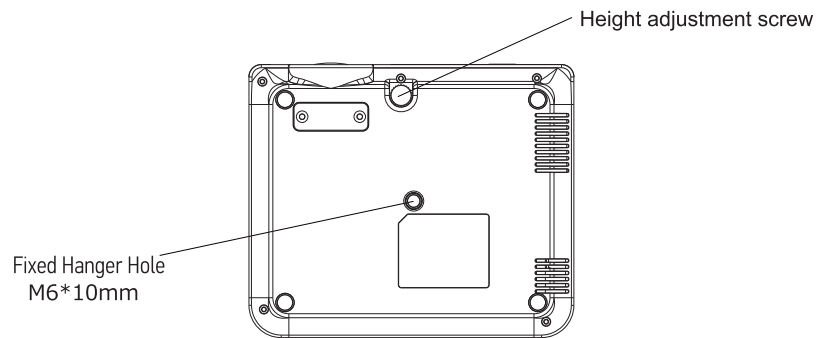
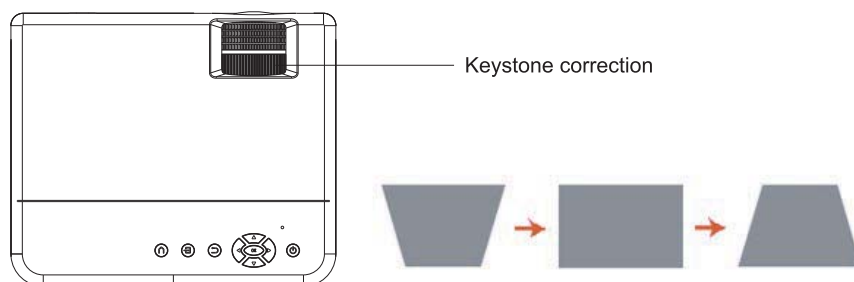


IMAGE ADJUSTMENT

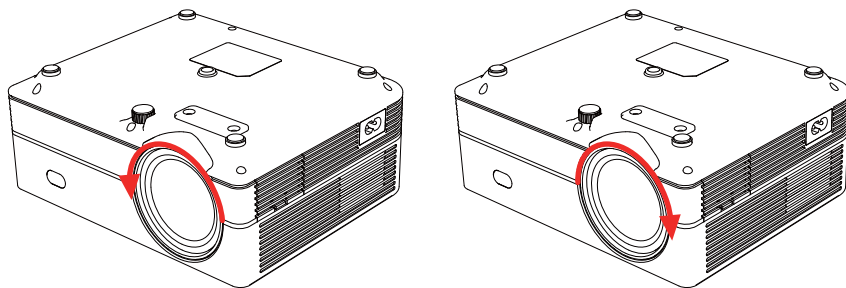
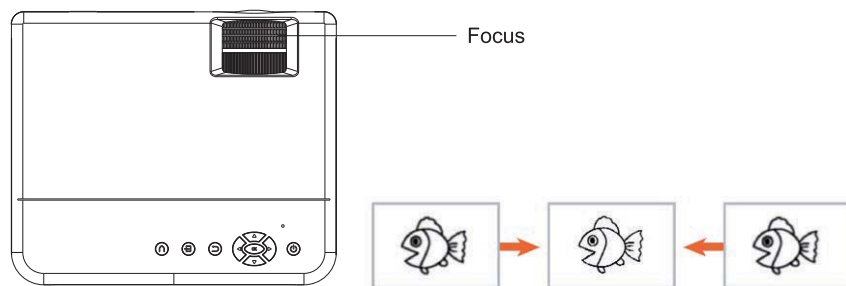
1. Manual Keystone Correction (Maximum Adjustable: $\pm 15^\circ$)

※ Slowly move the keystone correction ring on the top of the projector until the image change to be rectangle. The keystone correction can be adjusted up to $\pm 15^\circ$ (vertical).



2. Focus Adjustment

- ※ Rotate the focus ring slowly. At the same time, check the focus point carefully. The best focus point for the lens would be where the image most clear.

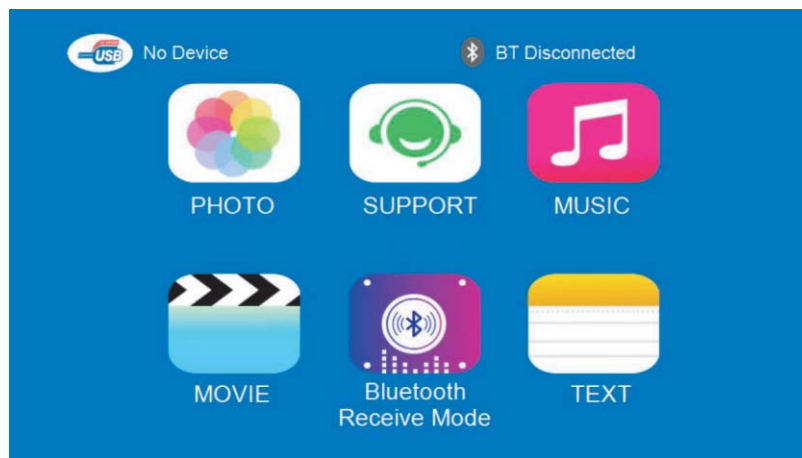


▲ Note:

If it is still blurry, please try to adjust the projection distance.

SETTING UP THE PROJECTOR

※ The projector's normal start-up screen is as follows.



1. Select The Input Signal Source

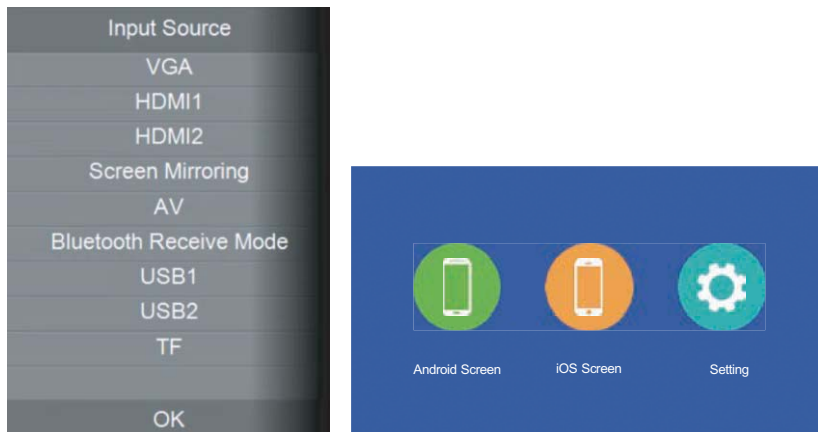
※ Select the desired input signal source (HDMI1/HDMI2/AV) on the home-page.

2. USB Disk Input Mode

※ Input the USB Disk; → Select the option [**PHOTO/MUSIC/SUPPORT/MOVIE/TEXT**] → Select the desired file (or folder to enter the subfolder) in the USB disk then press the  button to play it.

3. Wireless Connection

※ Select Screen Mirroring in the Input Source list → Press the OK key to enter the interface → After entering into the interface, select the function you need.

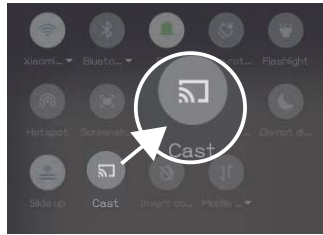


3.1 Android Screen (for Android Devices)



- ※ Android Screen has two connection method.
- ※ Method 1:Wireless connection(Recommended)

- 1). Select Android Screen function.
- 2). Turn on the WLAN on the Android device.
- 3). Launch the Multi-screen/Wireless Display/Screen Mirroring/Cst function(Figuer 1).
- 4). Select "RKcast-XXXXXX" from the searching result list(Figuer 2).



Figuer 1



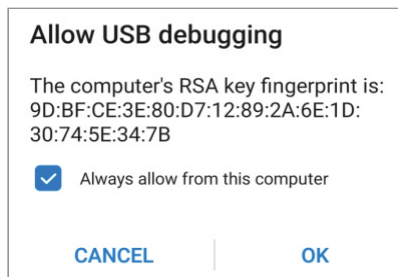
Figuer 2

⚠ Note:

※ Some Android devices may not support screen mirroring due to the compatibility.

※ Method 2: Wired connection

- 1). Select Android Screen function.
- 2). On your Android device, find Developer options and turn on USB debugging.
- 3). Connect your Android device to the projector USB port with ORIGINAL USB cable.
- 4). For the first time, your Android device will pop up below "Allow USB Debugging" window, select "Always allow from this computer" and tap "OK" to start screen mirroring.



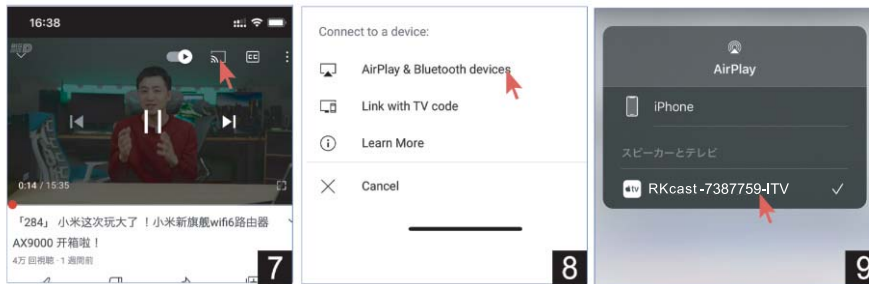
⚠ TIP:

※ The steps to turn on USB debugging vary from different models of Android devices. You may check it from internet. We take Samsung Galaxy S8+ as example:

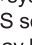
- 1). Go to setting, then tap About-> Software Information-> Build number.
- 2). Repeatedly tap Build number for several times until it shows Developer mode is turned on.
- 3). Go back to settings, you will find Develop option. Tap it into Develop option.
- 4). Find USB debugging option and enable it.

※ Some Android devices may not support screen mirroring due to the compatibility.

※ Some Android devices may only transfer the display without audio due to the protocol restrictions.



iPhone Airplay connection method:

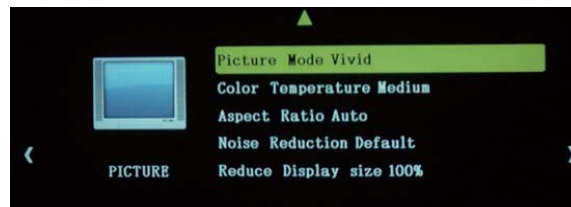
1. Turn on the projector's WiFi settings, select and connect your home 2.4G WiFi, and connect your iOS device to the same WiFi as your projector.
2. 【setting】 → system setup → mirror setting-select Airplay in Airplay mode .
3. Enter the iOS screen. (If this page is not displayed, Airplay will not be possible.)
4. Tap the Airplay button “” on the APP such as Youtube and select RKcast-XXXXXX-ITV. If the Airplay connection is successful, you can chat on your iphone while watching movie.

TIPS :

- 1) . Only DLNA compatible APP can perform airplay operation. Android cannot support this function.
- 2) . For mimoring method, please refer to the manual P9-P15(Airplay is a new feature, so we're sorry for couldn't update the manual right away.)

Description of the projector OSD menu

1. Picture menu



3.2 iOS Screen (for iOS devices)

※ **iOS Screen has three connection methods.**

Method 1: Wireless connection with Wi-Fi router (Recommended)

- 1). Connect the projector to a Wi-Fi (Connect the projector and phone to the same home network).
- 2). Select iOS Screen function.
- 3). Connect your iOS device to same Wi-Fi router.
- 4). Turn on Screen Mirroring on your iOS device, select the device name of the projector.



Method 2: Wireless connection without Wi-Fi router

- 1). Projector doesn't need to connect to Wi-Fi router
- 2). Select iOS Screen function
- 3). Turn on Wi-Fi on your iOS device and search for the network name of the projector, for example: RKcast-XXXXXX select it and enter password 12345678, then your iOS device will connect to the projector.
- 4). Turn on Screen Mirroring on your iOS device, select the device name of the projector.



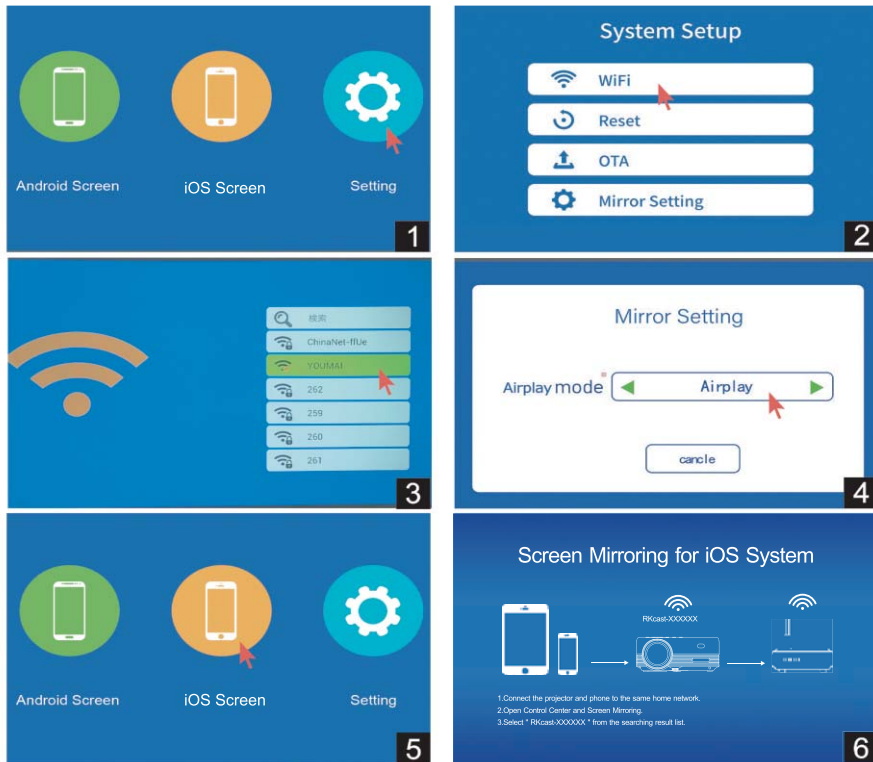
⚠ TIPS :

1). In the case of screen mirroring with Android equipment and USB cable, audio cannot be transmitted because the Android decoding format is different. The projector has no sound, and the Android smart phone produces sound. This is a normal phenomenon. In this case, we recommend connecting to the speaker using the Bluetooth function of your mobile phone.

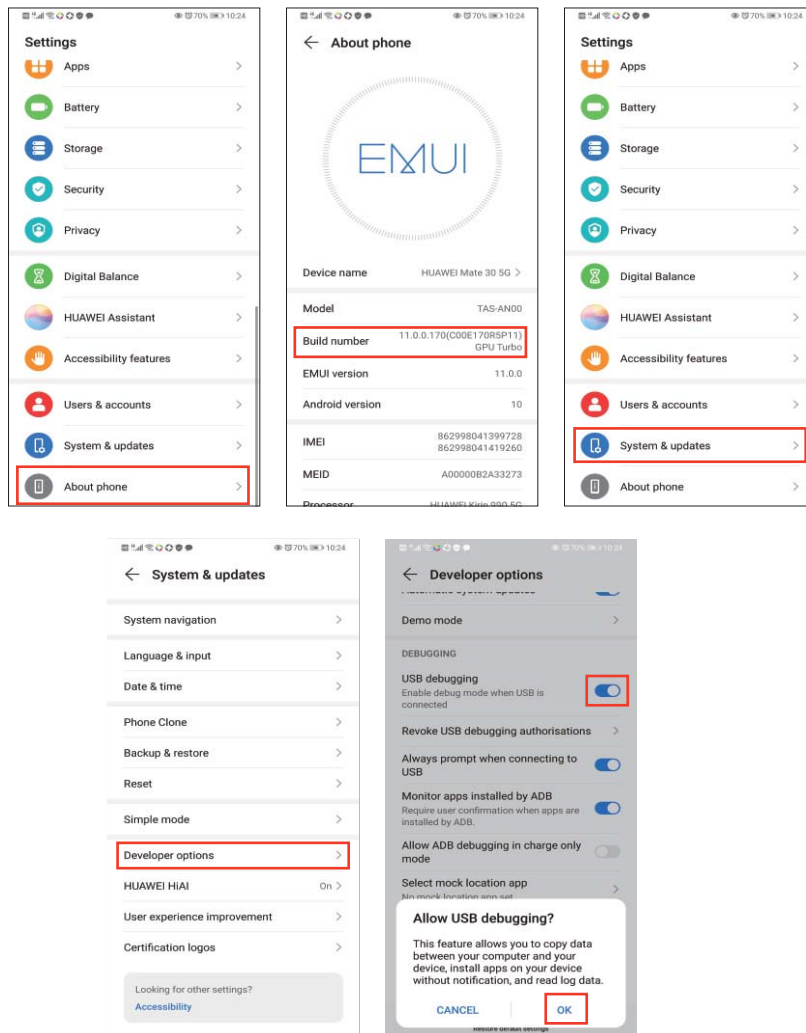
2). If you want to hear sound from the projector, please refer to 3.1 How to Mirroring with Android Wireless Mirroring connection.

3). The above operation process: Huawei model: MATE30. We take (Android version: 10) for example. Screen displays by phone model and setting vary.

5. Airplay Connection Method



B. Connect your ios device to the projector usb port with a USB cable. Press and hold [Build Number] and enter the password. Open the developer options for Android equipment. (Various Android equipment developer options have different ways to open. Contact your Android equipment service provider) →→ Open usb debug. →→ On the "Do you want to allow debugging with USB?" Presentation screen, tap "OK".



4. Wired connection

4.1 iOS Wired connection

A. At first, enter the ios "Screen Mirroring" screen. (If you do not see this page, you will not be able to mirror.)



B. Connect your ios device to the projector usb port with a USB cable.

C. For the first time, your ios device will pop up a trust prompt. Confirm "Trust", then the screen mirroring will start.

4.2 Android Wired connection

A. At first, enter the Android "Screen Mirroring" screen. (If you do not see this page, you will not be able to mirror.)



Menu	Content
Picture Mode	Medium / Soft / User / Vivid
Color Temperature	Medium / Warm / User / Cool
Aspect	Auto / 4:3 / 16:9
Noise Reduction	Off / Low / Middle / High / Default
Reduce Display Size	0~100

※ For Airpods: Open Airpods and press and hold the back button for 3-4 seconds to search for and connect to Airpods.



⚠ Note :

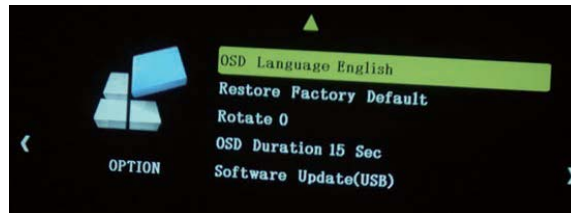
※ The Bluetooth function only supports PM3 and AAC audio formats. Audio in other formats cannot be played, or there is no sound when playing via Bluetooth.

2. Time set



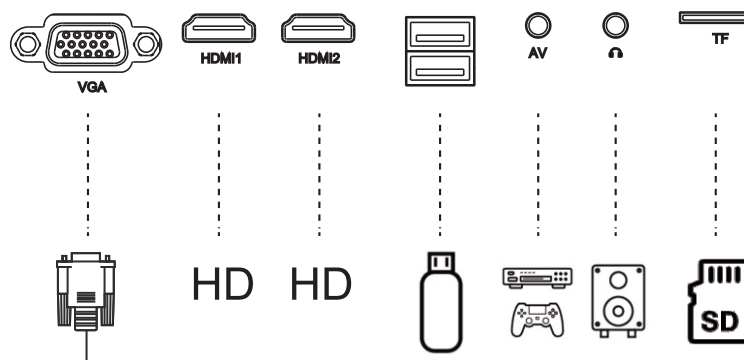
Menu	Content
Time	off/10min/20min/30min/60min/90min/120min/180min/240min

3. Option Menu

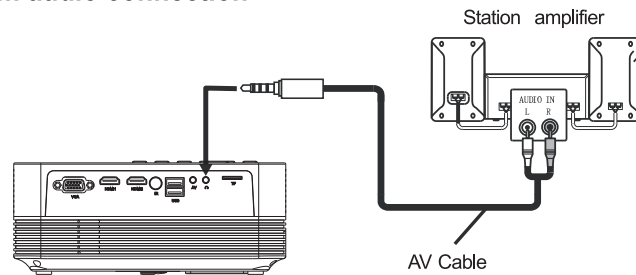


Menu	Content
OSD Language	English...
Restore Factory Default	Restore Factory Default
Rotate	Adjusting the projection direction mode : Front / Rear / Front / Ceiling / Rear / Ceiling
OSD Duration 15 Sec	OFF/5 sec/10 sec/15 sec
Softwareupdate (USB)	Software upgrade

SIGNAL LINES CONNECTION

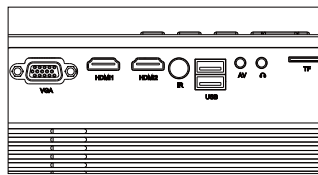


2. 3.5mm audio connection



3. Connect to the Sound bar/Speaker

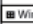
※ If your speaker has AUX port, please use your 3.5mm audio cable connect the projector and your speaker as the picture shows, enter the home page to select [AV] as the signal source.



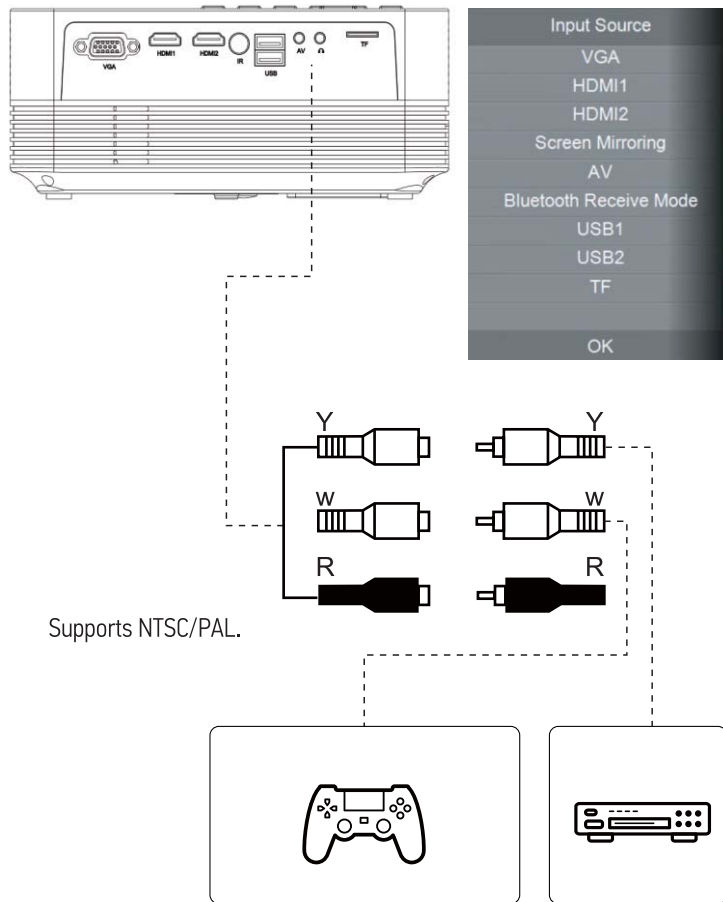
4. Connecting with Other Devices

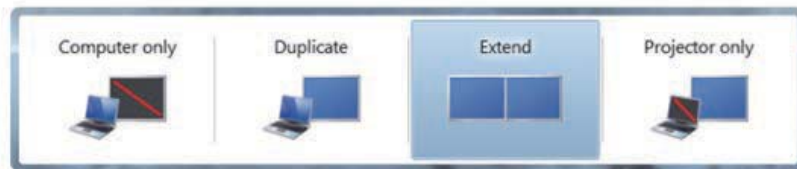
4.1 Connecting to the Computer

※ Using the HDMI cable in the package to connect with projector.
(An HDMI connection is recommended for projecting movies, videos, and other files which need to be HD.)

- 1). Turn on your computer and the projector;
- 2). Connect the HDMI cable to your computer's HDMI port;
- 3). Connect the other end to any available HDMI port on your projector;
- 4). Press the "Source" button to enter the interface of Input Source;
- 5). Select HDMI source to project any files on your computer;
- 6). On your laptop, hold down the keyboard keys "  + P " to change your display mode:

1. Connect to the AV Ports





- ※ Computer only: is the default option – only displays on the main monitor.
- ※ Duplicate: makes all of the monitors display the same thing duplicating the desktop on each monitor.
- ※ Extend: makes all of your monitors act like one big monitor extending the desktop across all of them.
- ※ Projector only: Displays only on the secondary monitor like a projector.

7). You can change your screen resolution:

Choose Start→Control Panel→Appearance and Personalization→Adjust Screen Resolution.



4.2 Connecting with MacBook or MacBook Air

1). Choose the media signal channel "HDMI". ②Use a Type-C to HDMI adapter to connect your MacBook, or a Mini Display to HDMI adapter to connect with your Macbook Air (Adapter not included).

4.3 Connecting with Amazon Fire TV Stick

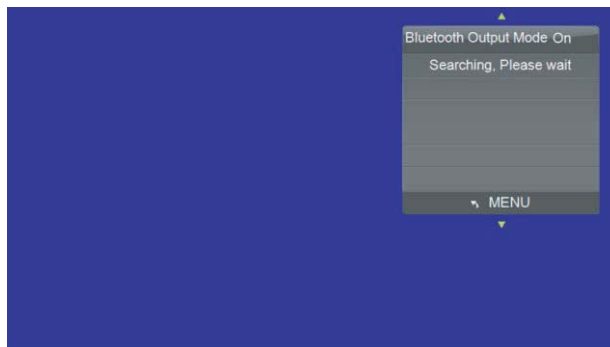
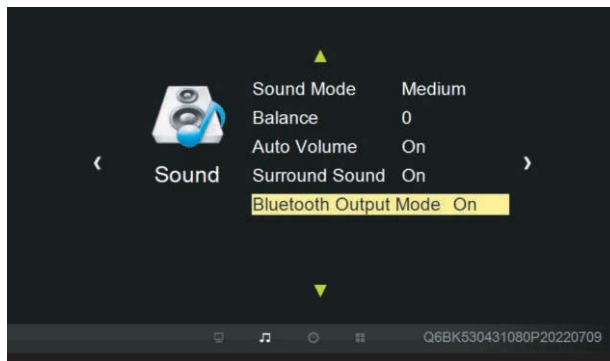
1). Plug the TV stick into HDMI port of thr projector.

2). Choose the media signal channel "HDMI".

PS: It only supports 1080P TV stick, not 4K TV stick

2. Bluetooth Output Mode

(Connect the projector to the home speakers.)



*After exiting the Bluetooth Receive Mode , find [Bluetooth Output Mode] in the [Sound Menu] of [Set].