



品牌：PETLIBRO

公司：深圳乐木骆科技有限公司

设计师：纪军龙

日期：2023.05.30

物料名称：

PLAF203 5L 视频款WIFI喂食器-双盆版-说明书-英

成型尺寸：高130mm X 宽80mm

材质：纯白书纸印刷

印刷工艺：

四色印刷，骑马钉

备注：



www.petlibro.com



USER MANUAL

Granary Automatic Pet Feeder -
Camera Monitoring 5L Double Food Tray

GRANARY

Automatic Pet Feeder - Camera Monitoring 5L Double Food Tray

@Libro Corp. All Rights Reserved.

Manufacturer: Shenzhen Libro Technology Co., Ltd.

Address: 12/F, Tower B, GALAXY WORLD, Yabao Road,

Longgang District, Shenzhen, China

JP Importer: 株式会社成洋

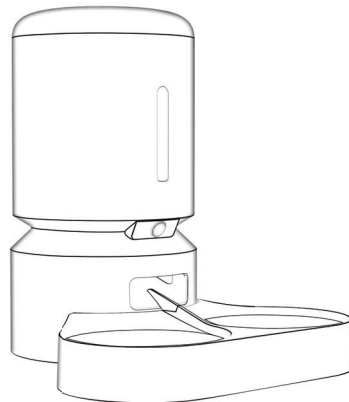
Made in China

Model: PLAF203



FCC ID:2A3DE-PLAF203S IC:28987-PLAF203S

This device complies with Part 15 of the FCC Rules. Operation is subject to the following two conditions: (1) this device may not cause harmful interference, and (2) this device must accept any interference received, including interference that may cause undesired operation.



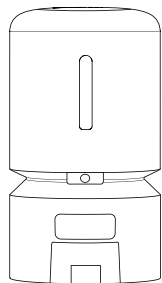
*Please read this manual before using the product and keep it for future reference. This product is intended for household use only.

Contents

/ English

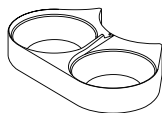
In The Box	01
Product Overview	02
Buttons And Indicators Overview	04
Set Up The Feeder	06
App Control	14
Care And Maintenance	15
Specifications	20
Troubleshooting	20
Safety Instructions	24
Warranty	25
Notice	25

In The Box



Automatic Pet Feeder

X1



Double Food Bowl
with Holder

X1



Power Adapter

X1



Meal Splitter

X1



User Manual

X1



Quick Start Guide

X1

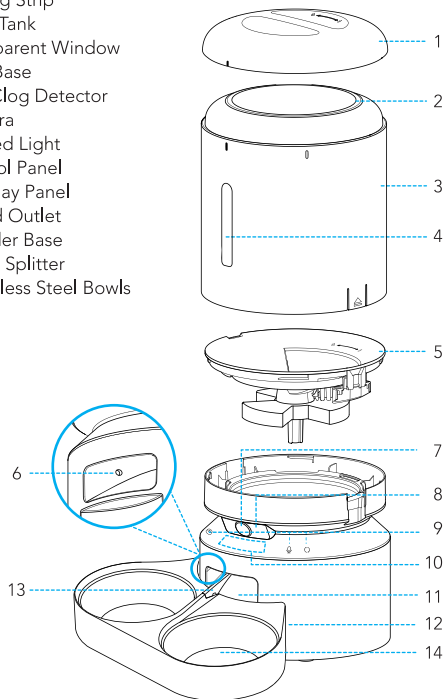


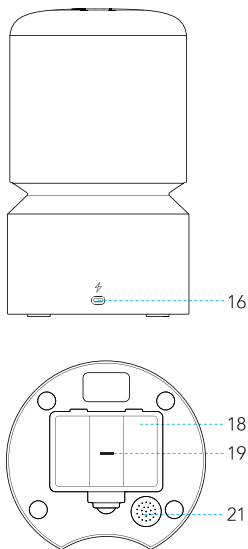
Desiccant Bag

X1

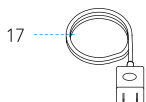
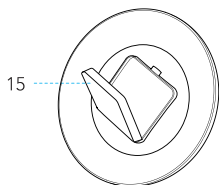
Product Overview

1. Lid
2. Sealing Strip
3. Food Tank
4. Transparent Window
5. Tank Base
6. Anti-Clog Detector
7. Camera
8. Infrared Light
9. Control Panel
10. Display Panel
11. Food Outlet
12. Feeder Base
13. Meal Splitter
14. Stainless Steel Bowls





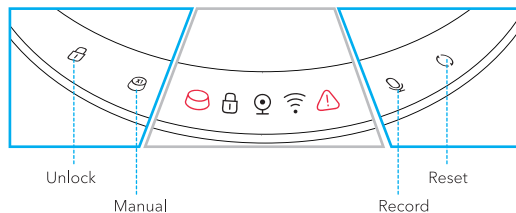
- 15. Desiccant Box
- 16. Power Jack
- 17. Power Adapter







- 18. Battery Compartment
- 19. TF card slot
- 20. Compartment Lid
- 21. Speaker

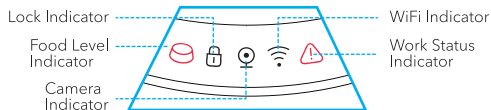
Buttons And Indicators Overview

Buttons Overview



Buttons	Operation
 Unlock	To unlock the control panel, press and hold the button for 5 seconds; the device emits a "di" sound and a "didi" sound.
 Manual	In the unlocked state, press once to dispense 1 portion of food.
 Record	In the unlocked state, press and hold the button, and start recording after a beep is heard. Record your message (maximum 10 seconds). When you finish recording, release the button, and you will hear two beeps, indicating the recording is saved.
 Reset	In the unlocked state, press and hold the button until the device emits a ding-dong sound. The WiFi indicator flashes rapidly at first, indicating the device is resetting, and then slowly, indicating the device is ready for reconnection.

Indicators Overview



Status Indicators

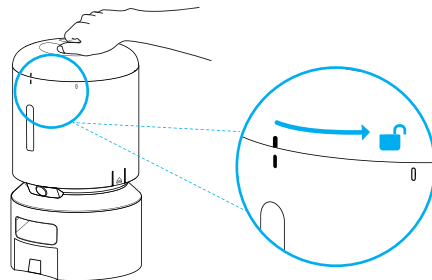
Indicator Type	Indicator Status	Device Status
Food Level Indicator	On	Light up red if the food level is low.
	Off	Off if the tank has enough food.
Lock Indicator	On	On if the control panel is locked.
	Off	Off if the control panel is unlocked.
Note: The control buttons will be locked automatically after 30 seconds of standby.		
Camera Indicator	On	Light up when the Camera page in the app is in use.
	Off	Exit the Camera page; the camera indicator goes out.
WiFi Indicator	Flash every one second	The feeder is ready to connect to WiFi.
	Flash several times per second	The feeder is connecting to WiFi or upgrading the software.
	Double flash	WiFi password error.
	Double flash	Connected to WiFi.
	Off	WiFi function is off.
Work Status Indicator	On	Food blockage or the motor can't work.
	Off	Everything is working well.

Set Up The Feeder

Getting Started

Installation

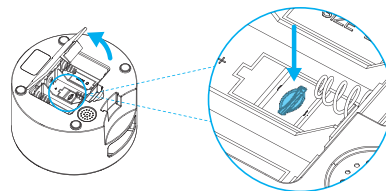
1. Turn the lid counterclockwise and take out the power adapter and user manual inside.



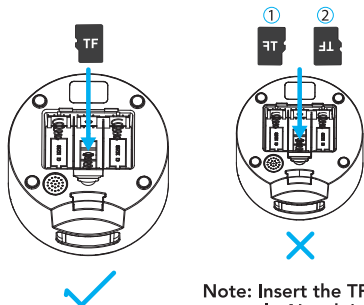
2. Insert the TF (microSD) card (not included)

To enable the video recording function, insert a TF card first, then enable the recording function in the app: tap in the upper right corner > Device Camera > Video Settings.

- 1) Open the battery compartment; the TF card slot is in the middle of the battery compartment.



- 2) Insert the TF card in the direction shown. Slide it in until it clicks into place.
Do not force or apply excess force when inserting the TF card.

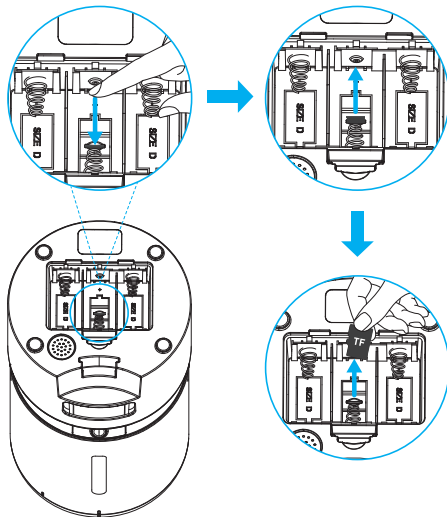


Note: Insert the TF card correctly. Not doing so can cause a malfunction.

Notes:

1. This product supports standard TF cards (such as Samsung and SanDisk) with a capacity of 16–256GB and a speed at Class 10 or above.
2. Before first use, please use the app to format the TF card in Settings.
3. To remove a TF (microSD) card, push the TF card in lightly.

For reasons of privacy, the video files on the TF card can only be checked through the Replay section of the app and cannot be read by a PC or phone.



3. Connect to a power source.

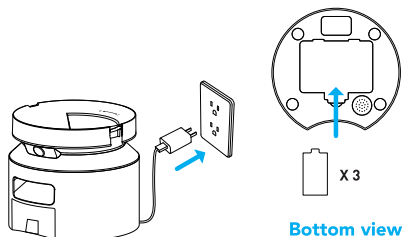
- 1) Plug the 5V power adapter into a power socket and the USB cable into the USB port on the back of the feeder.
- 2) The LED display will light up automatically to indicate the feeder is on.
- 3) Open the battery compartment at the bottom of the feeder. Install three alkaline D batteries (not included) in case of a power outage. Make sure the batteries match the positive and negative poles with the markings in the compartment.

Notes:

- Batteries are not included.
- To avoid a sudden power outage that affects the feed-

ing of your pet, do not use the batteries as the only power source. The batteries can only be used as an emergency plan.

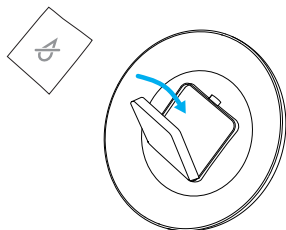
- To avoid battery leakage, remove the batteries if the device won't be in use for an extended period of time.
- When the feeder is powered only by batteries, the WiFi function, camera function, record button, and reset button would be disabled to extend the working time, but the meal schedules would be carried out normally.



4. Place the desiccant bag into the inner box under the lid.

Notes:

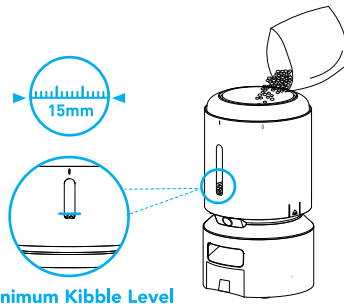
- It is recommended to change the desiccant bag every 15 days to prevent mold growth.
- Remove the desiccant bag before cleaning the lid.



5. Add dry pet food to the food tank.

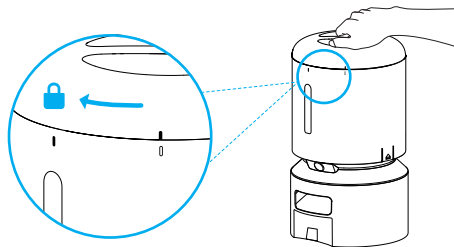
Notes:

- To prevent uneven food dispensing, please add enough food to the feeder. Make sure you can see at a glance how much kibble is left
- Recommended kibble size: 2–15mm (0.07–0.5in) in diameter.
- Do not use canned, wet, or moist food.

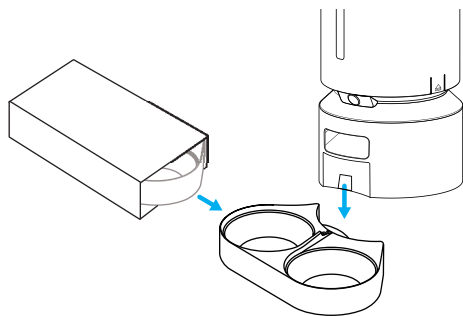


6. Put the lid back on.

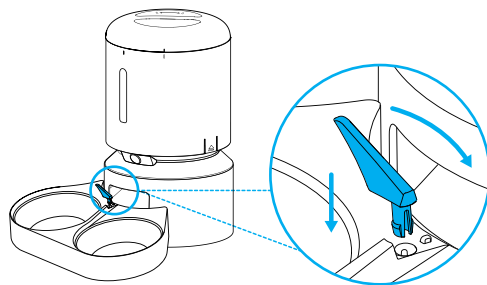
To snap into place, turn the lid clockwise from the right rotating sign to the left rotating sign (black), as shown in the figure below.



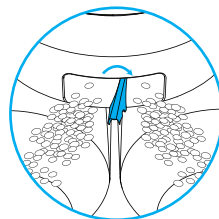
7. Take out and install the double food tray.
Attach the double food tray to the notch underneath the feeder base.



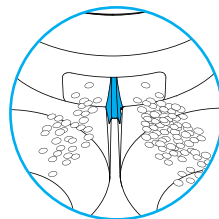
8. Install the meal splitter by aligning it with the round hole.



To dispense the same amount of food, move the splitter to its maximum right until it can't be moved anymore. (The splitter will be positioned toward the right from the middle of the food outlet.)



Food Amount: Left = Right

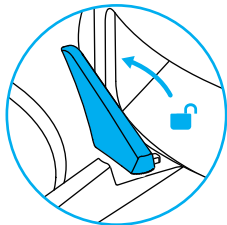
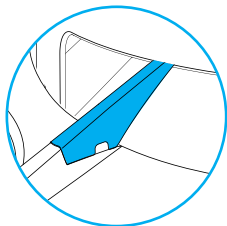


Food Amount: Left ≠ Right



Note: If the splitter is positioned in the middle of the food outlet, the feeder may not dispense an equal amount of food.

Note: To remove the bowl holder from the feeder base, move the meal splitter away from the food outlet.



If there is kibble in the food bowl, handle it gently to avoid spilling. Hold the base instead of any other parts when lifting the feeder.

App Control

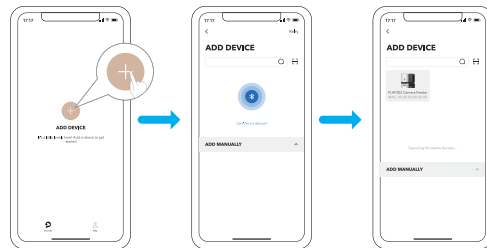
1. Download and install the PETLIBRO app.



Note

• There are two similar apps available on your phone's app store: PETLIBRO and PETLIBRO LITE. Please make sure you download the right one.

2. Follow the instructions to configure the network.



Care And Maintenance

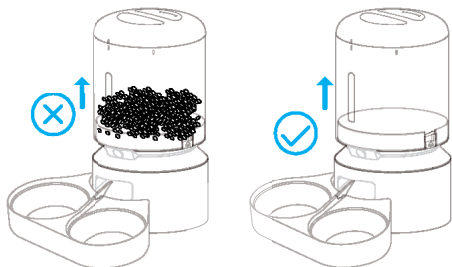
It's recommended to clean the feeder regularly for the health of your pets.

The washable parts are as follows: lid, food tank, tank base, stainless steel bowl, and bowl holder.

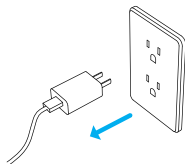
Use a dry cloth to clean the remaining parts.

Clean the Tank Lid, Food Tank, and Tank Base

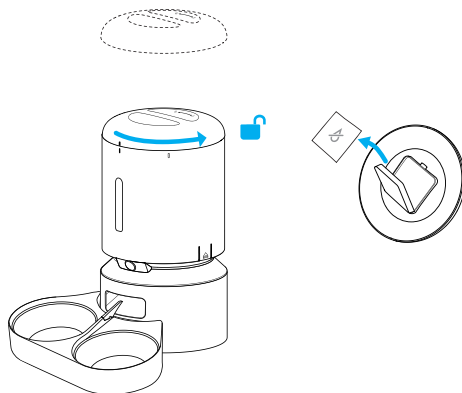
Before removing the food tank, be sure the tank is empty in case food spills all over.



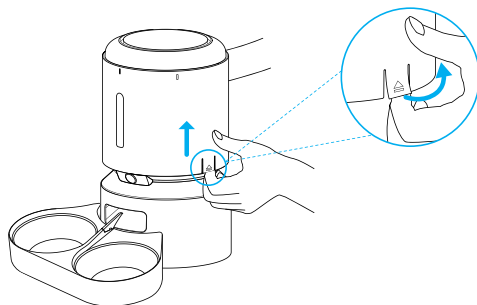
1. Disconnect the power before cleaning.



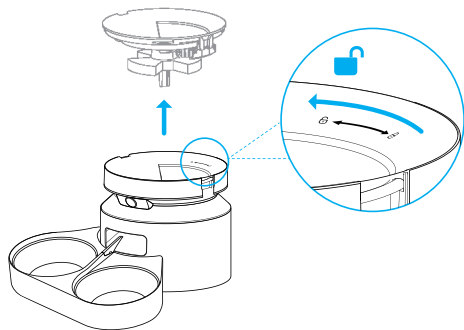
2. Turn the lid counterclockwise to remove it, and take out the desiccant bag from the inner box under the lid.



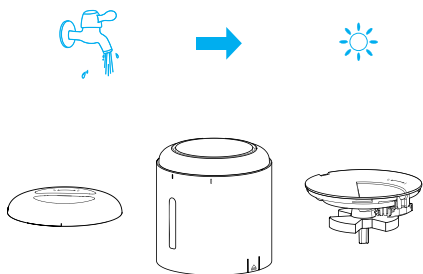
3. Pull the notches on both sides outward a little and then up to remove the food tank.



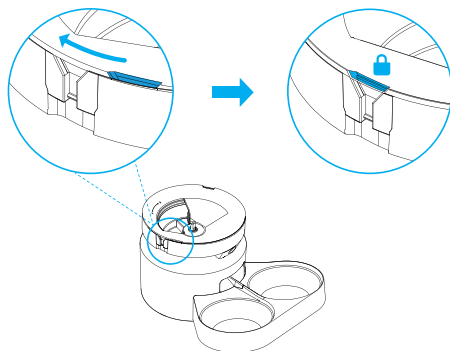
4. Turn the tank base counterclockwise to remove it.



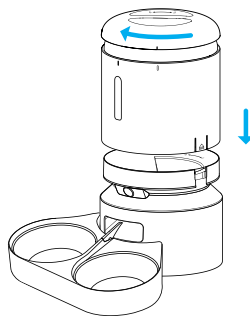
5. Thoroughly rinse and air-dry the lid, tank and tank base.



6. Reinstall them on the product. Turn the tank base clockwise until it snaps into place.

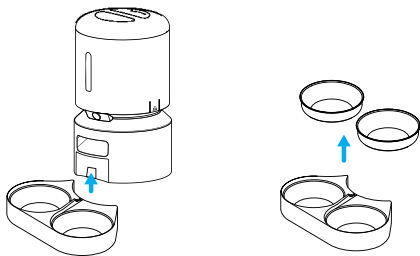
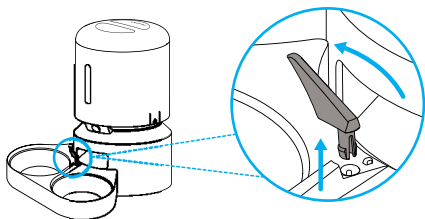


7. Install the tank and lid.

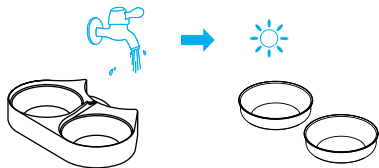


Clean the Bowls and Holder

1. Remove the bowl holder from the feeder base.



2. Rinse the stainless steel bowls and holder, and air-dry them thoroughly before reinstalling them on the product.



Specifications


Model	PLAF203
Capacity	5L
Power	DC 5V power adapter; 3 x alkaline D batteries (not included)
Power Adapter	Input: AC 100–240V 50/60Hz Output: DC 5V
Operating Temperature	0°C - 40°C / 32°F - 104°F
Dimensions	34 × 19 × 19cm / 13.4 × 7.5 × 7.5in
Net Weight	1.95kg / 4.3lb




Troubleshooting

The answers to these questions should help you solve most problems you may have with the pet feeder. If they do not, please contact our customer service team via support@petlibro.com.

Problem	Solution
Can't connect the feeder to WiFi	<ol style="list-style-type: none">1) Keep the feeder and your phone close to your router; make sure the network signal is good.2) Restart the feeder.3) Follow the app's instructions or our operation videos to add the feeder. There is more than one method for adding.4) Contact our after-sales team via email for help.

Problem	Solution
The WiFi connection goes offline frequently	<ol style="list-style-type: none"> 1) Keep the feeder close to your router; make sure the network signal is good. It is ideal to make it within 6 meters (19.7 feet) without obstacles and walls. 2) Make sure the power cable is connected firmly. 3) Restart the feeder.
I press the buttons but they don't work.	Press and hold the Unlock Button for 5s to unlock the buttons.
The food won't come out.	<ol style="list-style-type: none"> 1) Please make sure the food in the tank is dry and the food size is between 2–15mm (0.07–0.5in) in diameter. 2) Remove the food tank and tank base, and check if the chute inside is blocked. 3) Check if the anti-clog detector at the food outlet is dirty or blocked. 4) Check whether the battery level is low, whether the power adapter is connected, and whether a power outage occurs when the power adapter is connected but batteries are not installed.
The indicators are off.	<ol style="list-style-type: none"> 1) Check whether the power is cut off. 2) Check whether the indicator function is off on the app.
I can't remove the food tank.	Pull the notches on both sides outward a little and then up to remove the food tank.
The portion amount is not the same.	The first few portions may vary, but it doesn't mean the appliance is faulty. After about 6 feedings, it should be almost even.

Problem	Solution
The feeder's camera can't read the QR code on your phone.	<ol style="list-style-type: none"> 1) Make sure the feeder is ready for network connection with a flashing WiFi indicator on the feeder. 2) Hold your phone about 6–8 inches away from the feeder's camera. Remove the food bowl and tilt the feeder as needed.
Can't view the live video.	<ol style="list-style-type: none"> 1) Switch to a stronger WiFi signal. 2) If the network connection is weak or unstable, change the video quality from HD (high definition) to SD (standard definition).
Where are the photos and videos stored?	<ol style="list-style-type: none"> 1) The screenshots and video clips are stored in the Album section of the app. 2) The video playbacks are stored in the Replay section of the app.
The color live video stream turns black and white.	<p>Night Vision is set to Auto by default; the infrared light will automatically turn on when it is dark, and the real-time video stream will appear in black and white. Night Vision turns off when there's enough ambient light.</p> <p>You can manually select the night vision to Auto/Always On/Always Off. Tap  icon in the upper right corner and go to IR Night Vision.</p>

Problem	Solution
What is the motion detection function?	<p>When motion is detected, your phone will receive a notification.</p> <ol style="list-style-type: none"> 1. To enable motion detection, tap  icon in the upper right corner, then go to Detection Alarm Settings > Motion Detection Alarm 2. The camera can automatically record a video clip when motion is detected. Tap  icon in the upper right corner, then go to Recording Settings > Recording Mode > Event Recording. 3. To ensure your phone can receive notifications, enable the PETLIBRO LITE app notifications on your phone first.
What is the sound detection function?	<p>When sound is detected, your phone will receive a notification.</p> <p>Notes:</p> <ol style="list-style-type: none"> 1. To enable sound detection, tap  icon in the upper right corner, then go to Detection Alarm Settings > Sound Detection Alarm. 2. To ensure your phone can receive notifications, enable the PETLIBRO LITE app notifications on your phone first.

Safety Instructions

- Use the feeder in a dry place.
- Use the feeder on a level surface.
- Dispose of all packaging materials properly. Some items may be packed in plastic bags; these bags could cause suffocation.
- Keep them away from children and pets.
- Do not use the feeder with pets that are not able to reach the food bowl or with any physical disability.
- Do not immerse the base part in water at any time as it may damage electronic components.
- Do not use the feeder outdoors. Check its operation frequently to be sure it is operating properly.
- Do not disassemble the feeder other than as instructed in this user manual.
- Only use accessories recommended or sold by the manufacturer. The use of accessories not recommended or sold by the manufacturer may cause an unsafe condition.
- Do not modify the feeder.
- Examine the feeder after installation. Do not plug in if there is water on the power cable or plug.
- To avoid tripping, always position the power cable out of the way of foot traffic.
- Do not install or store the feeder where it will be exposed to weather or temperatures below 0°C (32°F).
- Do not use the feeder without adding pet food first.
- Power off the feeder when it's not in use.

Warranty

- 12-month warranty
- For guidance on product use, please contact our customer service team via email: support@petlibro.com.

Notice

FCC statement

This device complies with Part 15 of the FCC Rules. Operation is subject to the following two conditions:

- (1) this device may not cause harmful interference, and
- (2) this device must accept any interference received, including interference that may cause undesired operation.

Changes or modifications to this unit not expressly approved by the party responsible for compliance could void the user's authority to operate the equipment.

Note:

This equipment has been tested and found to comply with the limits for a Class B digital device, pursuant to Part 15 of the FCC Rules. These limits are designed to provide reasonable protection against harmful interference in a residential installation. This equipment generates, uses and can radiate radio frequency energy and, if not installed and used in accordance with the instructions, may cause harmful interference to radio communications. However, there is no guarantee that interference will not occur in a particular installation. If this equipment does cause harmful interference to radio or television reception, which can be determined by turning the equipment off and on, the user is encouraged to try to correct the interference by one or more of the following measures:

- Reorient or relocate the receiving antenna.
- Increase the separation between the equipment and receiver.
- Connect the equipment into an outlet on a circuit different from that to which the receiver is connected.
- Consult the dealer or an experienced radio/TV technician for help.

This device and its antenna(s) must not be co-located or operated in conjunction with any other antenna or transmitter.

Radio frequency exposure statement

To maintain compliance with the FCC's RF Exposure Guidelines, this equipment should be installed and operated with a minimum distance of 20cm from your body.