



www.petlibro.com

POLAR

Wet Food Feeder

@Libro Corp. All Rights Reserved.

Manufacturer: Shenzhen Libro Technology Co., Ltd.

Address: 12/F, Tower B, GALAXY WORLD, Yabao Road,
Longgang District, Shenzhen, China.

Made in China

Model: PLAF109



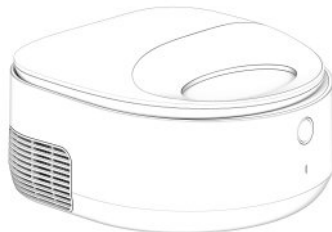
CAN ICES-3(B)/NMB-3(B) IC: 28987-PLAF109 FCC: 2A3DE-PLAF109

This device complies with Part 15 of the FCC Rules. Operation is subject to the following two conditions: (1) this device may not cause harmful interference, and (2) this device must accept any interference received, including interference that may cause undesired operation.



USER MANUAL

Polar Wet Food Feeder



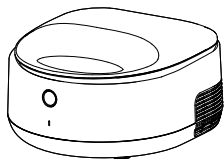
Please read this manual before using the product and keep it for future reference.

Contents

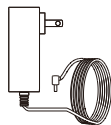
/ English

IN THE BOX	01
PRODUCT OVERVIEW	02
GETTING STARTED	06
CARE AND MAINTENANCE	12
SPECIFICATIONS	16
SAFETY INSTRUCTIONS	16
WARRANTY	17
NOTICE	17

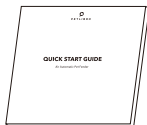
IN THE BOX



1 × Automatic
Pet Feeder



1 × Power Adapter

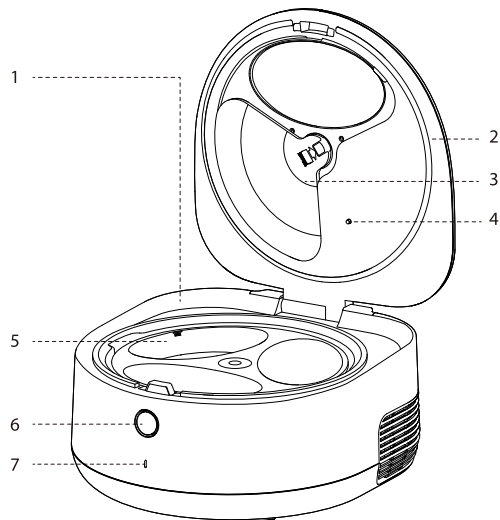


1 × Quick Start Guide



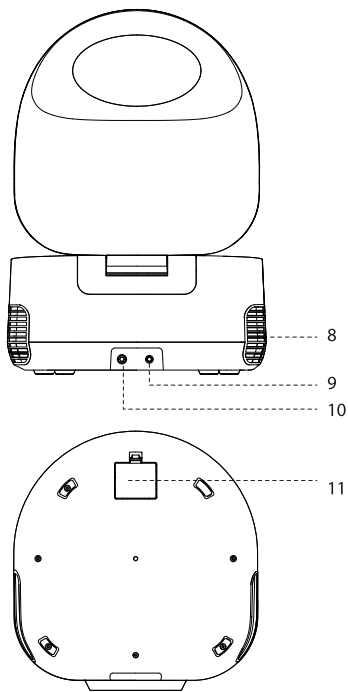
1 × User Manual

PRODUCT OVERVIEW



1. Body
2. Top Lid
3. Rotating Food Section Lid
4. Temperature Sensor
5. Food Bowl

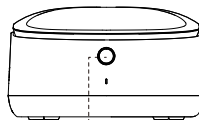
6. Top Lid Release Button
7. Status Indicator



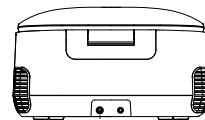
- 8. Cooling Vent
- 9. Power Port
- 10. Reset Button

- 11. Battery Compartment
(Batteries not included)



Button



Top Lid Release Button



Reset Button

Buttons	Operations
 Top Lid Release Button	Press to open the top lid
 Reset Button	Press and hold for three seconds to reset the feeder

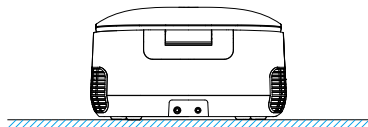
Indicator status

Indicator Status	Device Status
Off	The feeder is powered off
Flashes white once every second	Network configuration mode
Flashes white once every half a second	Network connection or OTA update
White on	Wi-Fi is connected and the feeder is working normally
Red on	Feeder malfunction
Flashes red and white once every half a second	Network failure

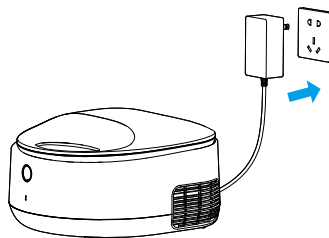
GETTING STARTED

Power on

1. Place the feeder on a level surface, and ensure that neither the left nor right cooling vents are obstructed by foreign objects.



2. Plug in the power cable, and the status indicator will flash white.

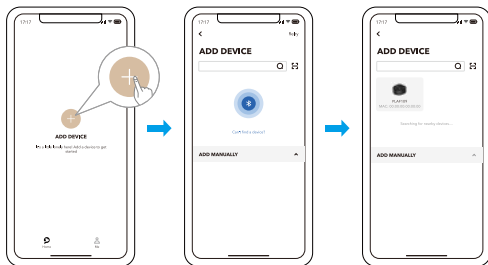


App control

1. Scan the QR code or search in your device's app store to download and install the PETLIBRO app.



2. Follow the instructions to configure the network.



Note:

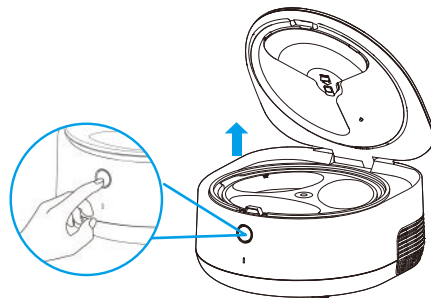
- This feeder only supports 2.4GHz networks.

Set up the feeder

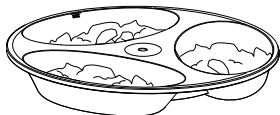
Scan the QR code to watch a video on how to use the feeder.



1. Press the top lid release button to open the top lid of the feeder.



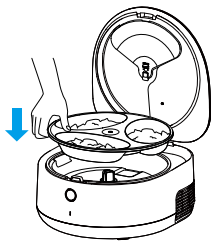
2. Take out the food bowl and add an appropriate amount of wet food to it.



Notes:

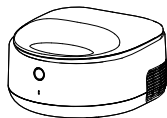
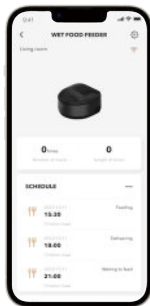
- Do not exceed the maximum food level line.
- For hot food, allow it to cool to room temperature before adding it to the feeder.

3. Put the food bowl back into the feeder.



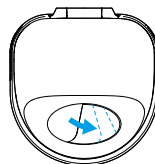
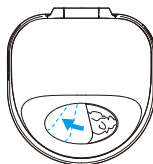
Note: Hold lightly to prevent liquid spills from wet food inside the feeder.

4. Set the feeding time for each added wet food meal in the app and close the top lid.



Note: The time that can be set for a single wet food meal cannot exceed 72 hours (3 days).

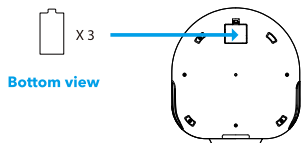
5. When the scheduled feeding time arrives, the rotating food section lid will open and automatically close after the pet finishes eating.



Note: Feeding time can be customized within the app.

Backup battery

1. The bottom of the feeder is reserved for a battery compartment. You can choose to install three AA batteries.

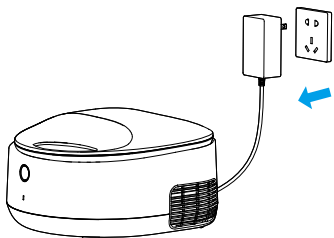


Note: Batteries are not included.

2. The backup batteries only work during a power failure; the refrigeration function will stop, but the feeding schedule within 12 hours will proceed as usual.

Power off

1. When not in use for an extended period, unplug the power cable to turn off the feeder.



Note: Remove backup batteries if they are installed.

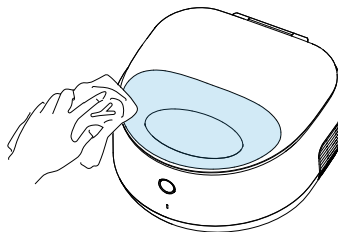
CARE AND MAINTENANCE

Scan the QR code to watch a video on how to clean the feeder.



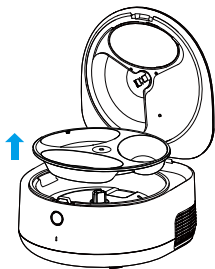
Feeding zone cleaning

Use a dry towel to wipe and clean the feeding zone.

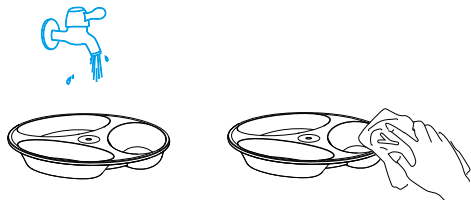


Food bowl cleaning

1. End all feeding schedules of the feeder and remove the food bowl.

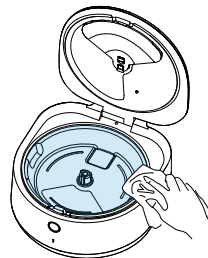


2. Clean the food bowl with water and wipe it dry.



Refrigeration zone cleaning

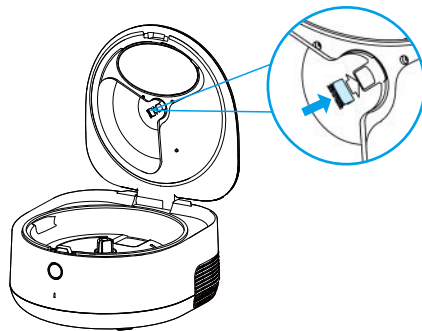
Use a dry towel to wipe and clean the refrigeration zone.



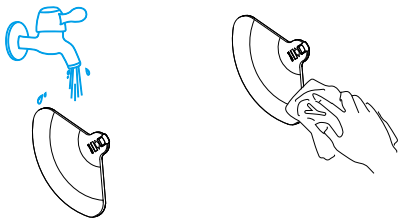
Note: Condensation on the bottom of the feeder is normal, and it occurs due to the refrigeration process.

Rotating food section lid cleaning

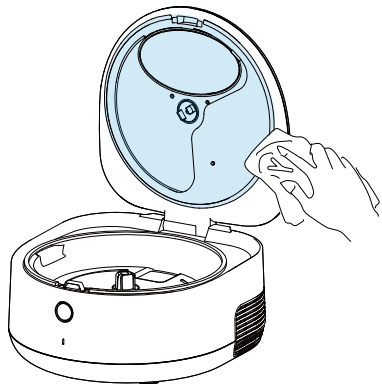
1. Release the latch to remove the rotating food section lid.



2. Clean the food section lid with water and wipe it dry.



3. Use a clean towel to clean the gap between the rotating food section lid and the top lid.



SPECIFICATIONS

Model	PLAF109
Power Adapter	Input: AC 100-240V 50/60Hz Output: DC 12V 5A
Number Of Meals	3
Wireless Frequency	2.4GHz
Supported System	Android, iOS
Dimensions (Power adapter not included)	361 × 340 × 196mm / 14.2 × 13.4 × 7.7in
Weight (Power adapter not included)	3.4kg/7.5lb

SAFETY INSTRUCTIONS

- Do not use the feeder at temperatures below 0°C (32°F) or above 30°C (86°F).
- Do not obstruct the feeder's cooling vents.
- Use the feeder in a dry place.
- Use the feeder on a level surface.
- Dispose of all packaging materials properly. Some items may be packed in plastic bags; these bags could cause suffocation.
- Do not use the feeder with pets that are not able to reach the food bowl or with any physical disability.
- Do not immerse the base part in water at any time as it may damage electronic components.

- Do not use the feeder outdoors. Check its operation frequently to be sure it is operating properly.
- Do not disassemble the feeder other than as instructed in this user manual.
- Only use accessories recommended or sold by the manufacturer. The use of accessories not recommended or sold by the manufacturer may cause an unsafe condition.
- Do not modify the feeder.
- Examine the feeder after installation. Do not plug in if there is water on the power cable or plug.
- To avoid tripping, always position the power cable out of the way of foot traffic.
- Power off the feeder when it's not in use.

WARRANTY

- 12-month warranty
- For guidance on product use, please contact our customer service team via email: support@petlibro.com.

NOTICE

FCC statement

This device complies with Part 15 of the FCC Rules. Operation is subject to the following two conditions:

(1) this device may not cause harmful interference, and

(2) this device must accept any interference received, including interference that may cause undesired operation.

Changes or modifications to this unit not expressly approved by the party responsible for compliance could void the user's authority to operate the equipment.

NOTE:

This equipment has been tested and found to comply with the limits for a Class B digital device, pursuant to Part 15 of the FCC Rules. These limits are designed to provide reasonable protection against harmful interference in a residential installation. This equipment generates, uses and can radiate radio frequency energy and, if not installed and used in accordance with the instructions, may cause harmful interference to radio communications. However, there is no guarantee that interference will not occur in a particular installation. If this equipment does cause harmful interference to radio or television reception, which can be determined by turning the equipment off and on, the user is encouraged to try to correct the interference by one or more of the following measures:

- Reorient or relocate the receiving antenna.
- Increase the separation between the equipment and receiver.
- Connect the equipment into an outlet on a circuit different from that to which the receiver is connected.
- Consult the dealer or an experienced radio/TV technician for help.

This device and its antenna(s) must not be co-located or operated in conjunction with any other antenna or transmitter.

This equipment complies with FCC radiation exposure limits set forth for an uncontrolled environment. This equipment should be installed and operated with minimum distance 20cm between the radiator and your body.

Product Model: PLAF109 PMN: Polar Wet Food Feeder

ISED Statement:

-English: This device complies with Industry Canada license - exempt RSS standard(s). Operation is subject to the following two conditions: (1) This device may not cause interference, and (2) This device must accept any interference, including interference that may cause undesired operation of the device.

The digital apparatus complies with Canadian CAN ICES - 3 (B)/NMB - 3(B).

- French: Le présent appareil est conforme aux CNR d'Industrie Canada applicables aux appareils radio exempts de licence. L'exploitation est autorisée aux deux conditions suivantes: (1) l'appareil ne doit pas produire de brouillage, et (2) l'utilisateur de l'appareil doit accepter tout brouillage radioélectrique subi, même si le brouillage est susceptible d'en compromettre le fonctionnement.

l'appareil numérique du ciem conforme canadien peut - 3 (b) / nmb - 3 (b).

This device meets the exemption from the routine evaluation limits in section 2.5 of RSS 102 and compliance with RSS 102 RF exposure, users can obtain Canadian information on RF exposure and compliance.

cet appareil est conforme à l'exemption des limites d'évaluation courante dans la section 2.5 du cnr - 102 et conformité avec rss 102 de l'exposition aux rf, les utilisateurs peuvent obtenir des données canadiennes sur l'exposition aux champs rf et la conformité.

This equipment complies with Canada radiation exposure limits set forth for an uncontrolled environment.

Cet équipement est conforme aux limites d'exposition au rayonnement établies par le Canada pour un environnement non contrôlé.

This equipment should be installed and operated with minimum distance 20cm between the radiator & your body. Cet équipement est conforme Canada limites d'exposition aux radiations dans un environnement non contrôlé. Cet équipement doit être installé et utilisé avec une distance minimale de 20 cm entre le radiateur et votre corps.