

# Venetian blinds motor Manual Instruction

## Products Description

Dimmer Venetian motor can realize smart control shutters, adjust angle by one button. There have dry battery and lithium battery + solar panel two solution can choice .Stand products can control by button and remote, also can customized control by APP.



## Parameter

NO.	Voltage	RF Frequency	Rated Power	Standby Current	Control Distance	Solar Panel Parameter	Work Temperature	Storage Temperature
JM36	3.7V 3200mAh or 6V	433.92MHz	4.2W	≤150uA	80m	11V 180mA	-20°~+65°C	-40°~+85°C

## Setting Instruction

**1.Enter setting status** (After entering the code setting status, if the code setting is not successful within 10 seconds, the system will exit due to timeout and the indicator will off)

### Method 1



Press the button on the motor for 3s



And the indicator light blinks slowly (500ms) to enter the setting status

### Method 2



Press the "Stop button" for 5s on the remote control that has been coded



And the indicator light blinks slowly (500ms) to enter the setting status

## 2.Match Code

Notes: The receiver code with a maximum of 10 transmitters, and automatically overwrites the 10th transmitter when paired coded with the 11th



In the setting status, select the channel required by the setting code on the transmitter, press the "up" button



And the indicator blinks fast twice (100ms). The setting is successful.

## 3.Change Direction

### Method 1



Press the "DOWN" button on the remote under the setting status



The indicator light blinks twice quickly (100ms) to change the direction successfully

### Method 2



Press the motor button for 5s



Then blinks quickly twice (100ms), Change direction is successful

(Notes: In the process of change direction, the motor will enter the status of code first (Press the indicator light for 3s it will blink slowly), do not care about it, press until 5s, and then the indicator light will blink quickly then off.)

## 4.Tilt & continuous move convention



In the setting status, press the "stop" button on the transmitter



The indicator light blinks quickly twice (100ms). The tilt & continuous move convention succeeds

## 5.Delete single code



In the setting status, Press the "back" button of the transmitter once



The indicator light blinks twice quickly(100ms) to turn off. The single code deletion succeeds

## 6.Motor control

### Continuous move status

#### Remote control

Press "UP" key within 1s, motor move up  
Press "STOP" key, motor stop.  
Press "DOWN" key within 1s, motor going down

#### Motor button control

Press the motor button, Motor open-stop-close-stop circulatory

### Tilt status

#### Remote control

Press "UP" key within 1s, motor tilt until limit.  
Press more then 1S, motor move up. "STOP" key for stop motor,  
Press "DOWN" key within 1s, motor tilt until limit.  
Press more then 1S, motor going down

### One key for moving to middle limited

Under stop status,  
Press "Stop" key of remote,  
Motor automatic move to middle limited

## 7.Limit setting

### Method 1: Automatically limit setting



Motor move up and down two times, stop on block twice at same position, It will have memory of these position.

Notes: Only up and down limit can be automatically setting, the third limit could not. If stop on block position are different every time, last position will be memory.

### Method 2: Manual limit setting



Press "back" key 1s that had match code transmitter



The indicator light keep blinks(250ms) been setting status



If press "up" key first, Means set up limit. If press "down" key first, Means set down limit. If press "stop" key, means set middle limit

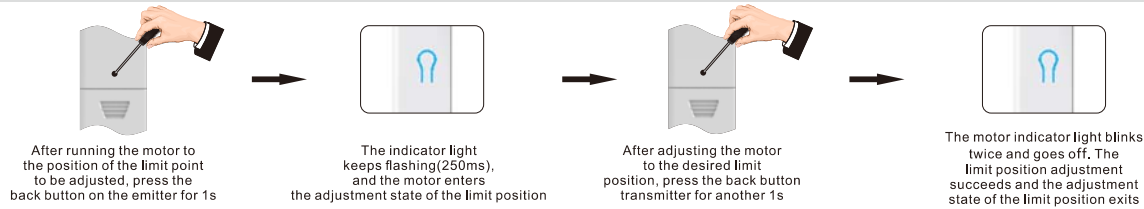


Press "black" key 1s when motor move to position you want

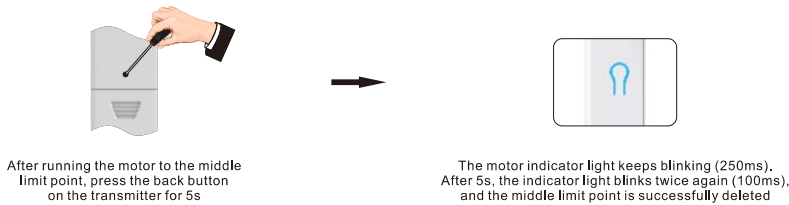


Motor indicator light blink 2 times quickly(100ms), limit setting succeeds

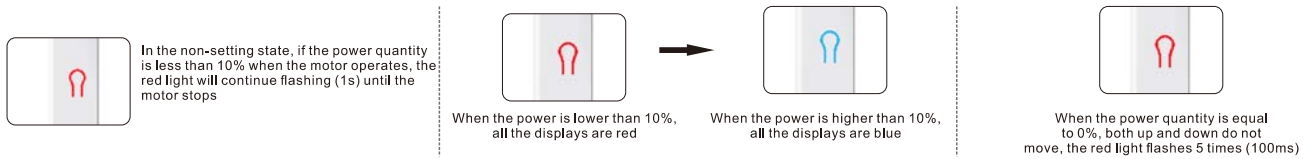
## 8. Adjust the limit position



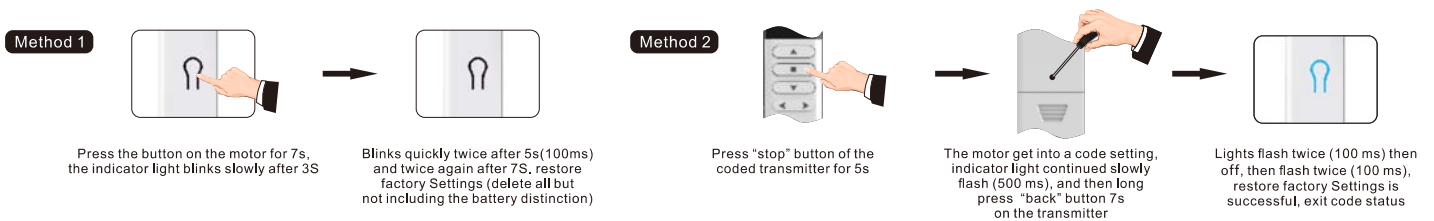
## 9.Delete the middle limit point (Note: The limit point will not be deleted if you press the back button for 5 seconds when it is not in the middle limit point.)



## 10. Low power remind



## 11. Restore factory Settings



## Installation instructions

- 1.Take off the gasket paper of 3m adhesive and put on the position you want beside of the shutter;
- 2.Choice 64mm or 89 mm clip which is suitable for slat width;
- 3.Push clip into the drive rod of motor;
- 4.Suggest install by screw which is suitable for the motor back hole;
- 5.Install solar panel by suckers where is under sunshine.

## Attention

1. Do not touch the circuit board with bare hands to avoid static electricity damage;
2. Do not plug in the charging power supply when the dry battery is supplied;
3. When the dry battery is out of power, please replace the new battery in time.  
Do not reuse the dead battery to avoid the loss of the limit point;
4. When using lithium battery power supply, it must be charged in time.

## Troubleshooting

Faults	Troubleshooting	Faults handling
No response to button	1.Check whether the motor is in good contact 2.Make sure the battery is fully charged	1.Reload the battery 2.Change dry battery or lithium battery
Limit point offset	Confirm whether there is a large friction force or foreign body obstruction in the process of operation, resulting in the same.	Restore factory Settings, reset the limit point
Can enter the code setting , but short press the button motor no action	Confirm whether there is a large friction force or foreign body obstruction in the process of operation, resulting in the same	Restore factory Settings, reset the limit point

#### FCC Statement

This device complies with part 15 of the FCC rules. Operation is subject to the following two conditions:  
(1) this device may not cause harmful interference, and (2) this device must accept any interference received, including interference that may cause undesired operation.

Changes or modifications not expressly approved by the party responsible for compliance could void the user's authority to operate the equipment.

NOTE: This equipment has been tested and found to comply with the limits for a Class B digital device, pursuant to part 15 of the FCC Rules. These limits are designed to provide reasonable protection against harmful interference in a residential installation. This equipment generates uses and can radiate radio frequency energy and, if not installed and used in accordance with the instructions, may cause harmful interference to radio communications. However, there is no guarantee that interference will not occur in a particular installation. If this equipment does cause harmful interference to radio or television reception, which can be determined by turning the equipment off and on, the user is encouraged to try to correct the interference by one or more of the following measures:

- Reorient or relocate the receiving antenna.
- Increase the separation between the equipment and receiver.
- Connect the equipment into an outlet on a circuit different from that to which the receiver is connected.
- Consult the dealer or an experienced radio/TV technician for help.

The device has been evaluated to meet general RF exposure requirement. The device can be used in portable exposure condition without restriction.