

**(Picture is based on PDF version of the manual)**

## **Customer service QR code**

### **directory**

The tools you need

Left/right hand change

Front derailleur

Rear derailleur

Transmission charging

System pairing

Transmission mounting

Transmission adjustment

Transmission fine-tuning

Transmission shifts

The transmission wakes up

Overview of the indicators

Maintenance

Quick Start Manual:

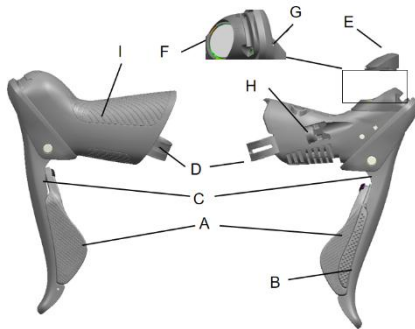
- 1, Operate the brake lever to expose the through-hole for threading
- 2, Open the rubber sleeve, and the side screw mouth can be locked and the hand change
- 3, Each part is mounted to the frame as usual
- 4, It can be used after charging and pairing

## The tools you need

Installing parts requires very specialized tools and supplies. If you encounter problems with installation, we recommend that you have it installed by a professional bicycle mechanic. (2mm/3mm/4mm/5mm Allen wrench, gloves, goggles, etc.)

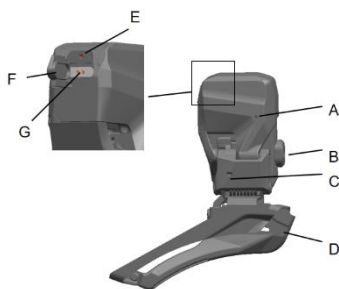


# Hand change



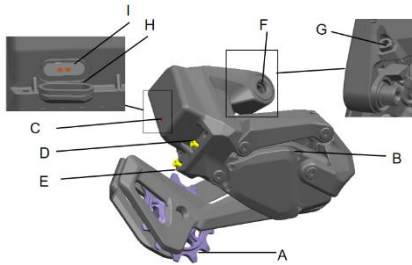
- A. Large buttons
- B. Small buttons
- C. Brake lever
- D. Clamp ring
- E. Battery cover
- F. Battery holder
- G. LED light
- H. Set screws
- I. Silicone coat

# Forward dial



- A. LED status indicator
- B. Install the bolts
- C. Limit screws
- D. Guide plate
- E. Charging indicator
- F. Dust cap
- G. Magnetic interface

## Back dial



- A. Guide wheels
- B. LED indicator
- C. Charging indicator
- D. Low limit screws
- E. High limit screws
- F. Install the bolts
- G. Adjusting bolts
- H. Dust cover
- I. Magnetic interface

## Transmission charging



## Front/back

1. Open the dust cover and suck up the magnetic connector of the charging cable.
2. Start charging.
3. The indicator light is off, and the charging cable is unplugged at the end of charging.

## Battery LED indicator light description

A red is charging

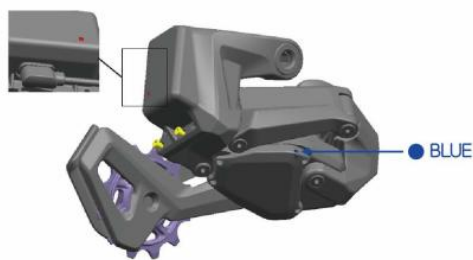
B extinguish Charging is complete

## Precautions

1. Please confirm that the DC connector with USB port voltage is 5.0Vdc and the current is less than 2A dc.
2. If the battery is not fully charged after 6 hours of charging, stop charging.
3. Make sure your hands or gloves are dry when operating the charge.
4. The product cannot be used when charging, and when the battery temperature is greater than 50° , stop charging in time and contact the after-sales service.
5. If you need to replace the battery, please pay attention to use special tools to remove the screws.
6. Do not use unlicensed third-party batteries (especially rear derailleurs), which may cause the transmission to not work properly.

## Transmission pairing

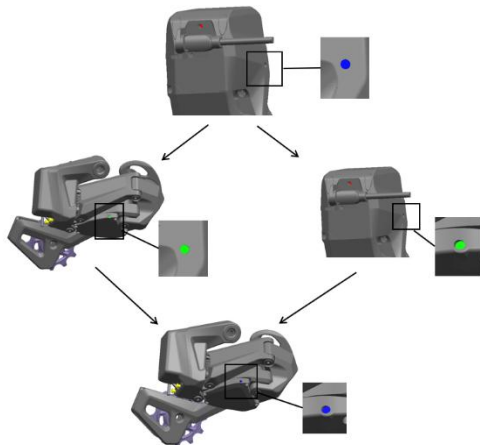
### Pairing overall logic (front dial, hand change and rear dial pairing)



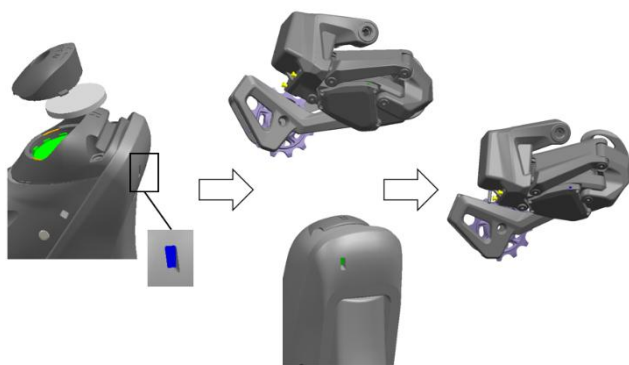
1. Enter pairing: Open the rear dial dust cover, connect the magnetic connector of the charging cable connected to the power supply to the magnetic connector of the rear dial, and the indicator flashes blue to enter pairing mode.



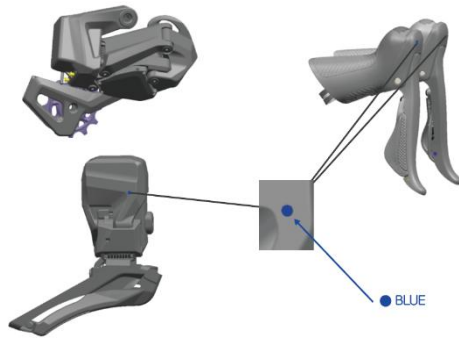
Pair the rear derailleur with the front derailleur and the left/right hand change in order.



2. Front dial pairing: Open the front dial dust cover, connect the magnetic connector of the charging cable connected to the power supply with the magnetic connector of the front dial, and the indicator flashes blue to enter the pairing mode. After successfully pairing with the rear dial, the rear and front dial indicators will light up green for 1 second, while the blue indicator will continue to flash after the rear dial.



3. Hand change pairing: Unscrew the left/right hand battery cover screws and remove the battery cover. Put on the battery to enter pairing mode, and the blue indicator flashes. After successfully pairing with the rear derailleur, the rear derailleur and left/right hand change indicator will light up green for 1 second, and the blue indicator of the rear derailleur will continue to flash. Then follow the same steps with the rest of the hand.



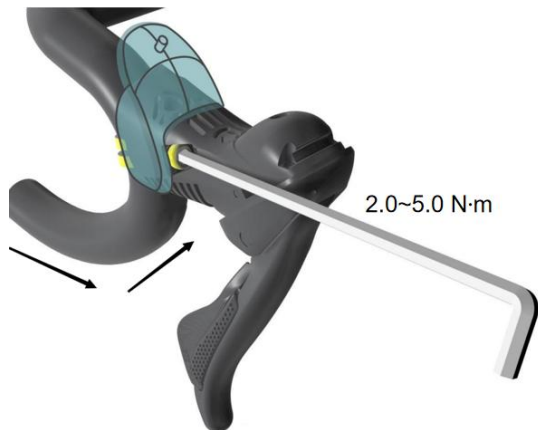
4. Exit pairing: After pairing the two hand changes, front dial and back dial one by one, press the left/right hand change any button to exit the pairing mode. The device that has been successfully paired flashes 5 times with a blue light.

## Precautions

1. The transmission equipment is in a shutdown state during transportation, please plug in the magnetic connector to wake up the equipment after unpacking. If you want to shut down the device, please do it on the APP.
2. The derailleur kit has been paired before unboxing, and there is no need to re-pair.
3. During the working process of the transmission, please do not cover it with metal, liquid, or other items that affect wireless communication, otherwise it will affect the normal operation of the overspeed kit.
4. If there is an error during the pairing process, you need to repeat the pairing operation again.
5. If any parts are replaced, added or removed, only the rear dial needs to be paired with the changed parts, and if the rear dial is changed, all accessories need to be re-paired.
6. In order to improve the success rate of pairing, the pairing order needs to be strictly implemented according to the user manual.
7. After starting pairing, it will automatically exit the pairing mode if there is no operation within 10s.
8. If there are multiple transmissions around, pair them one after the other, and do not operate the other transmissions during this period.
9. When pairing in batches, it is recommended to use the APP to scan the code in turn to pair.
10. The default state of the transmission device is racing mode, if you want to adjust it to leisure mode, please switch it on the APP.

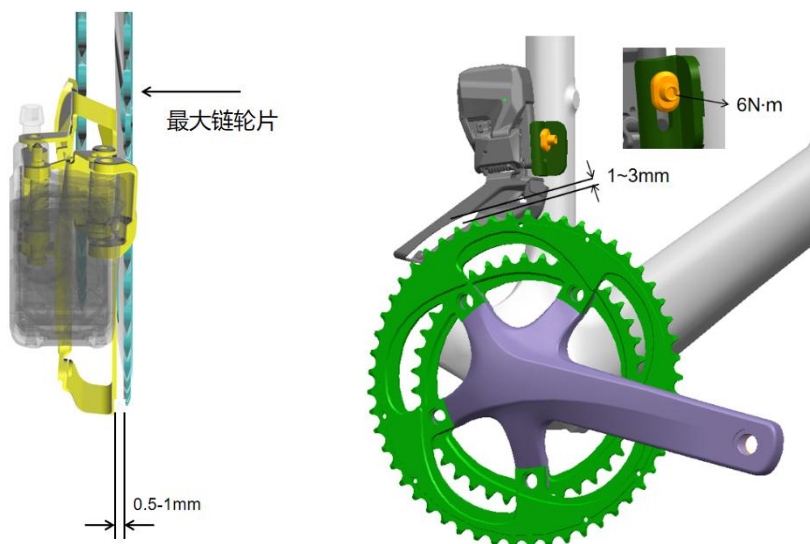
# Transmission mounting

## Hand change



Flip open the rubber sleeve from the top end, loosen the set screws with a 5mm Allen wrench, and then thread the clamp ring through the handlebar. Attach the handset to the handlebar and tighten the fixing bolts.

## Forward dial

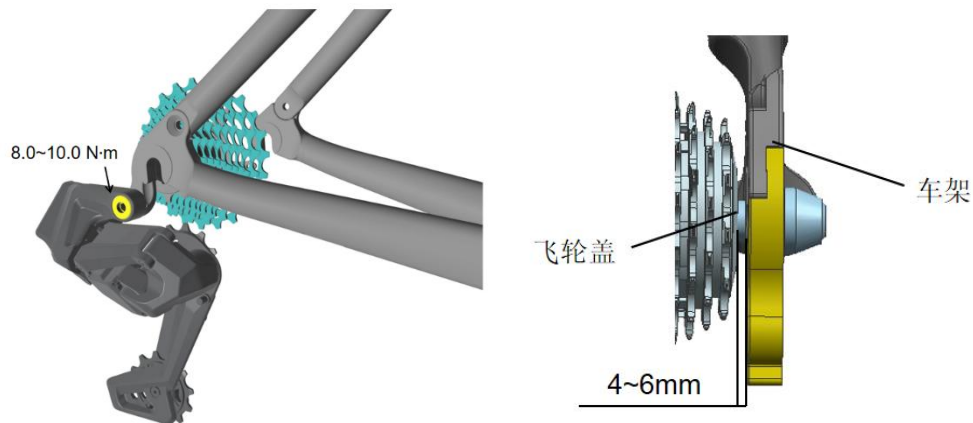


Use a 5mm Allen wrench to attach the front derailleur to the lugs and tighten the mounting bolts. When adjusting the mounting position, make sure that the plane of the outer guide plate is directly above the largest chainring, and the distance



between the outer plate and the maximum chainring is 0.5-1mm, and the distance between the outer bottom of the guide plate and the largest chainring is 1-3mm.

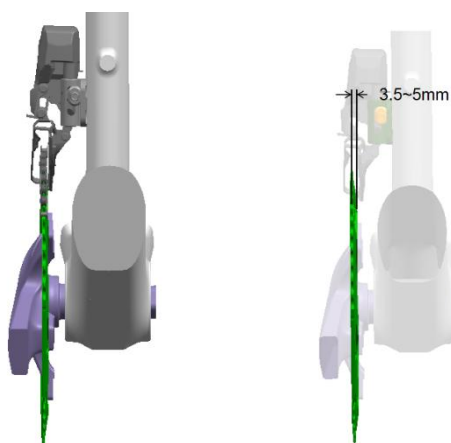
## Back dial



A 5mm Allen wrench is used to attach the transmission to the frame hook, and the appropriate chain is used to alternately pass through the two guide wheels of the transmission. The transmission performance is best when the distance between the inner plane of the chainstay and the outer side of the flywheel minimum gear is maintained at 4-6mm.

## Transmission adjustment

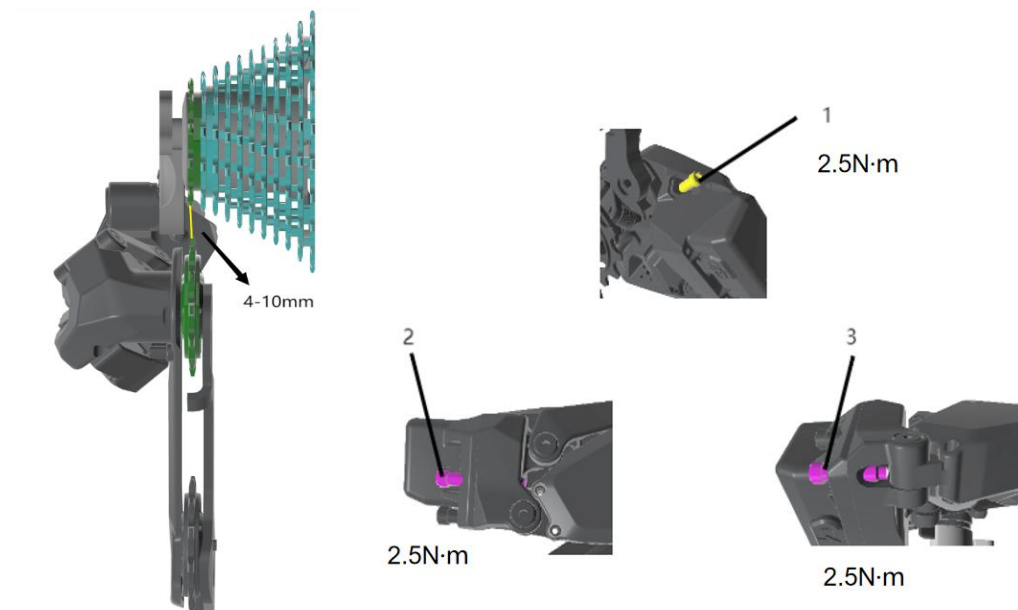
### Forward dial



Use the right-hand variable to make fine adjustments until the front derailleur inner guide fits snugly against the chain of the largest chain. If there is no chain as a

reference, adjust the distance between the inner guide plate of the front dilleur and the maximum chain wheel to 3.5~5mm.

## Back dial



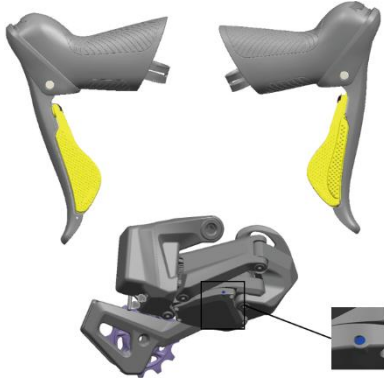
1. Use the right-hand variable to fine-tune until the center of the rear derailleur wheel aligns with the center of the minimum gear, and adjust the adjustment screw until the distance between the guide wheel and the minimum gear is 4-10 mm. (Different rear sprocket sizes will be different, the optimal distance will be different, the dimensions here are only for reference).

2. Press and hold the small button on your right hand for 5 seconds to enter the fine-tuning, and select the rear dial. Use the right-hand deception to fine-tune the rear derailleur until the center of the rear derailleur wheel aligns with the center of the smallest gear. Adjust the low limit screw until it gently touches the limit, then turn the bolt back 1/4 turn.

## Precautions

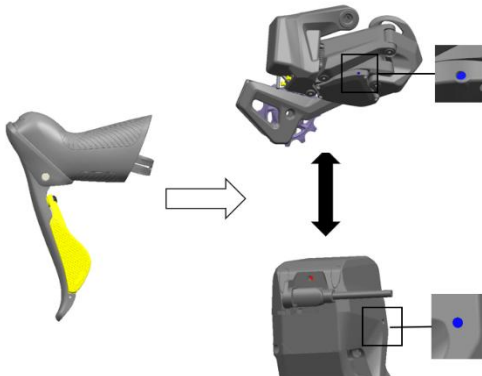
1. For details on how to enter the fine tuning, refer to "Transmission Fine Tuning".
2. After the front derailleur exits the fine-tuning, you need to press the left hand

change again to change the gear normally.



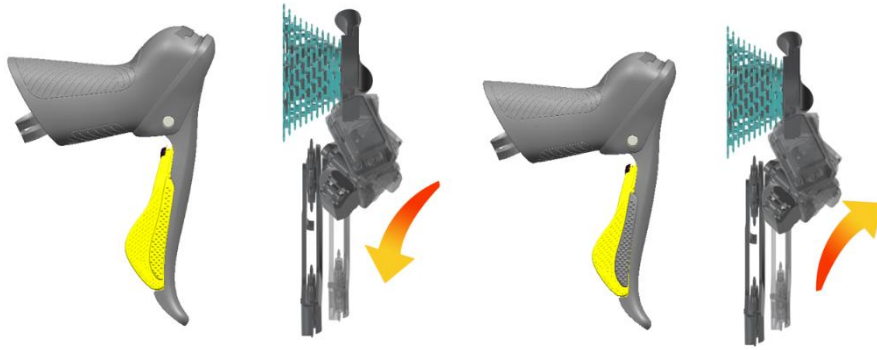
## Transmission fine-tuning

- 1.. Press and hold the small button for 5 seconds and then dial the indicator light up.
2. Within 3 seconds of the "rear dial indicator" lighting up, click the small button 5 times to enter the fine adjustment, and the rear dial indicator will be blue and solid.



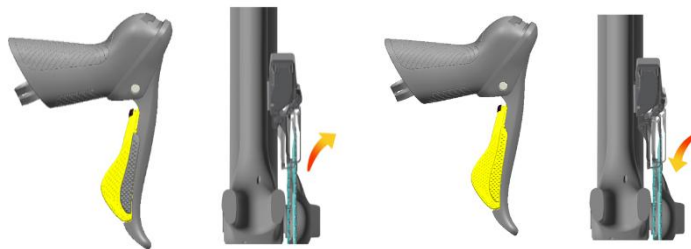
2. Select the fine-tuning device: Press the left-hand change button to select the fine-tuning device, and the blue indicator of the selected device is always on. When entering the fine tuning mode, the rear dial is selected by default.

3. Rear dial fine-tuning: press the right hand to become bigger button, and the rear dial moves in the direction of the large tooth;



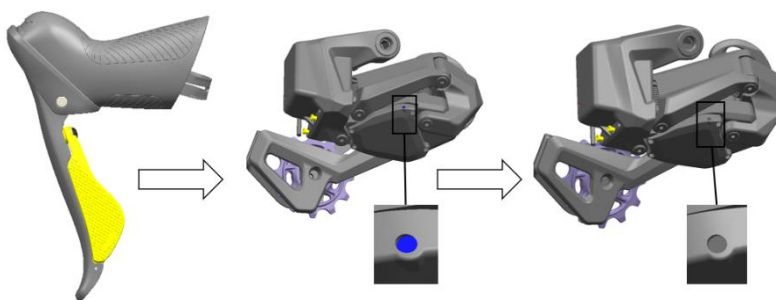
Press the right hand to get bigger button and the small button at the same time, and move the rear dial in the direction of the small tooth. Press the hand change button once, the indicator flashes blue, and then returns to solid on.

4. Fine-tuning of the front dial: when the front dial is selected, press the button to make the right hand bigger, and the front dial moves towards the large chain wheel; Press the big button and the small button on your right hand at the same time, and move the front dial towards the small chain



wheel.

5. Exit fine-tuning



After the fine-tuning is completed, press and hold the left hand for 3 seconds to exit the fine-tuning.

## Precautions

1. The fine-tuning function can finely adjust the axial distance between the

transmission and the sprocket (0.2mm each time), which can optimize the performance of the transmission and improve the smoothness of gear shifting.

2. Be sure to turn the sprocket when adjusting the transmission, otherwise the transmission may be damaged.

3. It is recommended to use APP for fine-tuning.

## Shift gears

### Forward dial



Normal Shifting:

Press the left-hand variable button and the transmission will shift in a cyclic between the big and small pinions, flashing the LED with each press of the button. If the shift is not successful within 1.5s, a forced shift can be used.

Forced Gear Shift:

When you press and hold the left-hand change button, the front derailleur is in a forced shift state. When the left-hand variable button is pressed, the front derailleur stays in the maximum shift position, and returns to the normal position after release.

### Back dial



1. Press the button on your right hand to increase the gear, and the transmission

shifts to the large gear. Each time the indicator flashes, long press to continuously upshift.



2. Press the right hand button to reduce the size button and the big button at the same time, and the transmission will be downshifted and move towards the small tooth. Each time the indicator flashes, a long press can continue to downshift.

## Overview of the indicators

### Hand change



LED lights

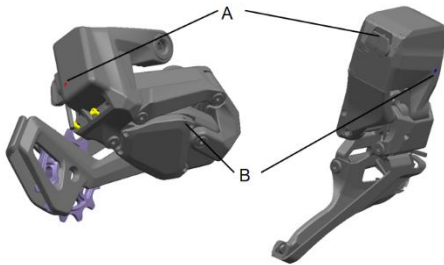
Blue Pairing mode/fine tuning mode

Green Pairing Success/Shift Mode

Red Low battery

White failure, loss of signal

## Derailleur



A: Battery LED light  
Red is charging

B: Status LED  
Blue Pairing mode/fine tuning mode  
Green Pairing Success/Shift Mode  
Red Low battery

## Maintenance

### Hand transformer battery

Open the hand rubber case, remove the battery cover, and remove the used battery. Insert the new CR2032 battery into the negative terminal, then fasten the battery cover and tighten it, and unfold the rubber sleeve.

### Accessory replacement

The rear derailleur, front derailleur, or hand adapter are damaged separately and need to be replaced

When you change the front derailleur, you only need to re-pair the changed accessories, and when you change the rear derailleur, all the accessories need to be re-paired.

## Precautions

1. Only CR2032 can be used for hand transformer batteries.
2. It is recommended to clean the derailleur regularly.

3. The working temperature of the derailleur is -10°C-50°C.

4. The rear derailleur and front derailleur batteries are designed as one, and non-professionals should not disassemble them. When air transportation, it needs to be disassembled, and it needs to be operated by professionals.

§ 15.19 Labelling requirements.

This device complies with part 15 of the FCC Rules. Operation is subject to the following two conditions: (1) This device may not cause harmful interference, and (2) this device must accept any interference received, including interference that may cause undesired operation.

§ 15.21 Information to user.

Any Changes or modifications not expressly approved by the party responsible for compliance could void the user's authority to operate the equipment.

§ 15.105 Information to the user.

Note: This equipment has been tested and found to comply with the limits for a Class B digital device, pursuant to part 15 of the FCC Rules. These limits are designed to provide reasonable protection against harmful interference in a residential installation. This equipment generates uses and can radiate radio frequency energy and, if not installed and used in accordance with the instructions, may cause harmful interference to radio communications. However, there is no guarantee that interference will not occur in a particular installation. If this equipment does cause harmful interference to radio or television reception, which can be determined by turning the equipment off and on, the user is encouraged to try to correct the interference by one or more of the following measures:

-Reorient or relocate the receiving antenna.

-Increase the separation between the equipment and receiver.

-Connect the equipment into an outlet on a circuit different from that to which the receiver is

connected. -Consult the dealer or an experienced radio/TV technician for help.

**\* RF warning for Portable device:**

The device has been evaluated to meet general RF exposure requirement. The device can be used in portable exposure condition without restriction.