

WELCOME

Thank you for choosing FITURE

For any technical support, please visit www.fiture.com or send email to hello@fiture.com
Please download FITURE APP by scanning the QR code below or searching FITURE from Google Play or Apple App Store



说明书尺寸：**185*95mm**

材质：太古纸

封面：**300g** 内页：**180g**

IMPORTANT REMINDERS

Please read all warnings, precautions and instructions in this manual before using the product.
Improper usage or maintenance can void the warranty. Please follow future.com/manuals for the latest version of the manual.

SAFETY WARNING

This product should be stored in a dry, ventilated environment. Water may cause short circuit and damage on the product; the product should not be used outdoors nor in harsh environments where it may be exposed to rain, thunder and lightning, sand, fog, snow, hail, gust or low temperatures.
Please unplug your FITURE device under extreme weather condition to avoid damage. If noise, smell or any abnormal condition occurs during usage,

please unplug your product and contact FITURE Customer Service.
Please only use the power cord packed with the product and connect to nationally certified power socket to avoid damage. Please avoid usage in the environment with a strong electromagnetic field. Please follow this User Manual to install the product and ensure that there are no objects that may affect the stability of the product or cause damage. Please avoid any object or any external force (including but not limited to hit, impact, press and scratch) from damaging the screen.
Please ensure that no minors or pets play, chase, run or jump around the product and do not push, touch or hit the product in any way to avoid damage of the product or cause of injury.

IMPORTANT REMINDERS

NOT SUITABLE FOR

Under any of the following circumstances, please consult your physician before using the product or practicing any exercises or training courses:

- Seniors over 65 years old.
- During pregnancy
- People who are under any medication.
- People with any chronic disease or in jury, including but not limited to:
Hypertension, heart disease, cerebral infarction, cerebral blood supply insufficiency and other cardiovascular and cerebrovascular diseases.
Diabetes, hypoglycaemia, gout and other metabolic disorders.
Asthma and other respiratory diseases and any other chronic diseases. Muscle injury, ligament injury, myofascial injury, joint inflammation and injury, connective tissue disease, soft tissue

injury and other orthopaedic injuries or any acute or chronic body injury (including those in the recovery period). Limb coordination disorders, central nervous system or peripheral blood vessel and nerve diseases. Other diseases and conditions that do not allow exercise.
Minors must be accompanied by a guardian when using the product. It is forbidden to use the product under the influence of alcohol, fatigue, after high-intensity work, irregular work and rest, and when suffering from physical discomfort. Do not use the product in a humid or high temperature environment to avoid heat stroke or other physical damage. When using the product, please wear an effective heart rate monitoring device to monitor heart rate changes in real time to ensure that the exercise intensity is within your tolerance range. Please control the duration, intensity, times and

IMPORTANT REMINDERS

frequency of exercise, avoid long-term, high-intensity, and high-frequency exercise that exceeds your own load capacity to avoid sports injuries. In the event of any other discomfort such as chest tightness, dizziness or significant pain in certain parts of the body during exercise, please stop exercising immediately and seek medical attention.

Consult your physician before beginning a new fitness plan.

Incorrect or excessive training can result in serious injury.

PRODUCT MAINTENANCE AND CARE

Do not wipe the surface of the product with chemical solutions which may cause permanent damage to its appearance. Please clean the surface gently with a clean, soft and dry cotton cloth, please turn off the device and unplug before cleaning. Keep the product away from water and heat to avoid damage of the product. Any disassembling or assembling of the product not operated by our assigned staff may cause damage to the product and cause of injury, and will void the warranty. Only our assigned staff. All parts and accessories of this product during maintenance and replacement must be authorized components by FITURE. Do not modify the product or use it for purposes other than those designed for. Do not decompile, modify or inappropriately upgrade the software of the product by any means except our official released software version.

IMPORTANT REMINDERS

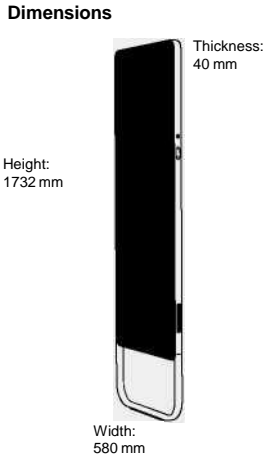
PRODUCT MAINTENANCE AND CARE

Do not cover or block the heat dissipation holes on the back of the product and do not put sharp objects or metal touching signal connectors into the heat dissipation holes, to avoid overheating, short-circuit, product damage or electric shock hazard.

OTHERS

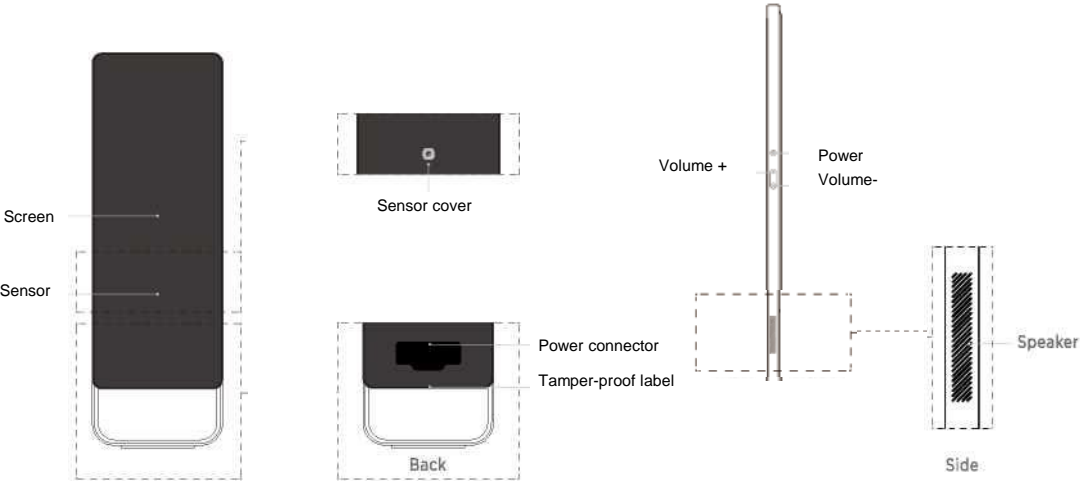
User who has a pacemaker, defibrillator or other medical equipment implanted should consult your physician before using the product or preforming any exercise and training. This product contains magnets or components and radios that emit electromagnetic fields which may interfere with pacemakers, defibrillators, or other medical devices in close contact. Consult with your physician and your device manufacturer for specific guidelines and keep a safe distance between the medical device and the product during use. If the product is interfering with your cardiac pacemaker, defibrillator or any other medical device, please stop using it immediately and seek medical attention.

PRODUCT SPECIFICATION



Display	Size: 43" Resolution: 1920*1080 Aspect ratio: 9:16	Operating environment	Operating temperature: 0-45° Operating altitude: 0-5000 m Input:120V AC
Speaker	Rated power: 10 W Quantity: 2	Audio and video formats	Supported video format:H264, H265, MPEG*1/2/4, WMV, etc. Supported audio format: MP3, AAC, WMA, PM, FLAC, etc.
Sensor	1920*1080@30fps wide dynamic range	Wireless	Wi-Fi: 802.11a/b/g/n/ac Bluetooth: 5.0 wireless technology
Memory	32GB eMMC	Weight	Main device (with stand): 27kg
Model	FUTURE S1US Classic		

PRODUCT FEATURES



Warning: Sensor is concealed and visible under bright light. You can place the magnetic sensor cover on the sensor while the device is not in use. Any damage on the tamper-proof label will void the warranty of this product.

PRODUCT CONTENTS



Main Device (with stand) 1 Set



Power cord 1 Piece



User manual 1 Copy



Cleaning cloth 1 Piece



Magnetic sensor cover 1 Piece



Anchor and Screw 1 Set



Bushing 1 Piece

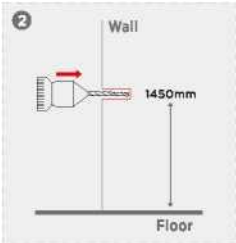
INSTALLATION

WALL MOUNTING INSTALLATION

For wall mounting installation, a wall mounting bracket must be purchased separately. Please contact FITURE Customer Service if you need it and follow the installation SOPs in the wall mounting kit. FITURE assumes no responsibility for product damage or personal injury caused by improper installation.

WALL LEANING INSTALLATION

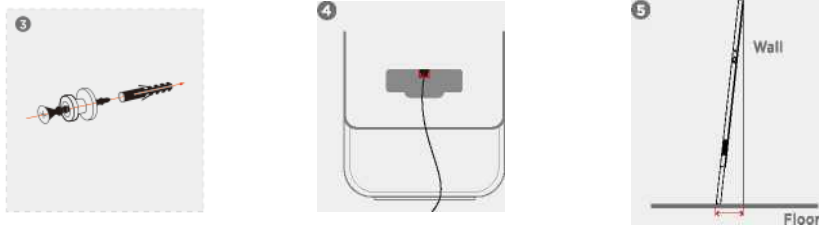
1. Use a stud finder to find one stud to which you want to attach the bushing. Mark its left and right sides with a pencil, then determine the stud's center and mark vertically.
Note: This step is only for the stud wall, if your wall is masonry/drywall, you can ignore this step.
2. Mark with a pencil at a height of 1450mm from the floor and drill a hole with a 9mm diameter drill to a depth of 50mm.
Note: If it is a stud wall, make sure that the hole is drilled into the stud.



INSTALLATION

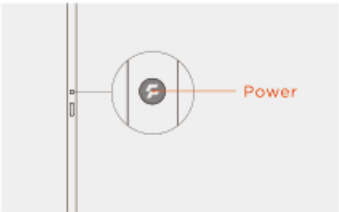
WALL LEANING INSTALLATION

- 3. Hammer the wall anchor into the hole and make sure it fits tightly into the hole. Fasten the bushing to the wall with the wall anchor screw and make sure it is tightened.
- 4. Connect the power cord into the FITURE and secure it with the cable holder.
- 5. Place the FITURE against the wall and ensure that the distance between the stand and the wall is 250 mm, and fasten the safety buckles on the back of the body with the bushing.
- 6. Connect the power cord to the wall socket. Only remove the protection film once the FITURE is properly installed.



Warning: For your safety, please ensure the FITURE is placed on a flat, non-slip floor and ensure the safety buckle is fastened to the bushing. FITURE assumes no responsibility for any damage or injury caused by improper installation and use.

GETTING STARTED



- 1. Power on**
Connect the power supply, and press "Power" to turn it on.



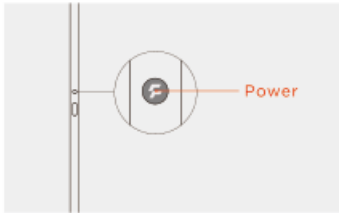
- 2. Connect and initialize the device**
Select "Add" on FITURE App and follow the instruction to setup the product. Please make sure your Wi-Fi connection is stable and able to connect to the internet.



- 3. Select content**
Browse and select content on FITURE App to start training.

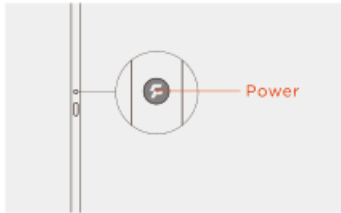
*Please update your FITURE App to the latest version for the best experience.

GETTING STARTED



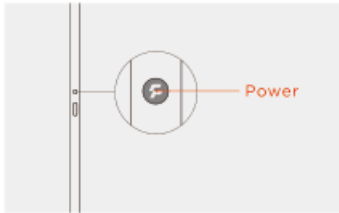
4. Standby mode

FITURE will automatically enter standby mode if it is idle for a set time. You can also enter the standby mode by short press 'Power'.



5. Wake up the FITURE

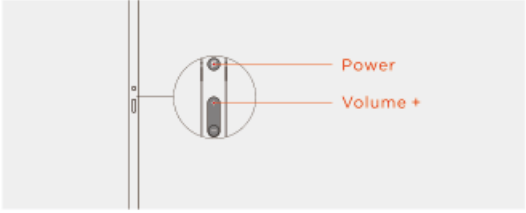
When FITURE is in standby mode, you can wake it up by either connecting it to the FITURE App or pressing 'Power'.



6. Power off

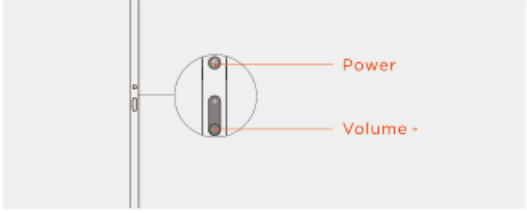
Press and hold 'Power' to turn it off.

RESET



1. Network reset

Press and hold 'Power' and 'Volume +' simultaneously to reset its network.



2. System reset

Press and hold 'Power' and 'Volume-' simultaneously to reset its system.

DISCLAIMER

In order to protect users' legal rights and interests, please read through the User Manual and the disclaimer before use, and follow this User Manual to operate the product. By using the product, you have read, understood, acknowledged and accepted all the terms and conditions of the User Manual and the disclaimer. The user is responsible for their own behaviors and all consequences arising therefrom. The user shall use the product only for legitimate purposes and agree to any current or future policies or guidelines developed by FITURE. When using the product, make sure to follow and implement, including but not limited to, the requirements in the User Manual. FITURE assumes no responsibility for any personal injuries, accidents, property damages, legal disputes, or any other adverse event resulting in a conflict of interest that may arise from the use of the product in violation of the User Manual and the disclaimer or from force majeure. FITURE assumes no responsibility for any direct or indirect violation of the laws by the user when using the product.

NOTICE

This device complies with part 15 of the FCC Rules. Operation is subject to the following two conditions: (1) this device must not cause harmful interference, and (2) this device must not accept any interference received, including interference that may cause undesired operation.

NOTE: This equipment has been tested and found to comply with the limits for a Class B digital device, pursuant to part 15 of the FCC Rules. These limits are designed to provide reasonable protection against harmful interference in a residential installation. This equipment generates, uses and can radiate radio frequency energy and, if not installed and used in accordance with the instructions, may cause harmful interference to radio communications. However, there is no guarantee that interference will not occur in a particular installation. If this equipment does cause harmful interference to radio or television reception, which can be determined by turning the equipment off and on, the user is encouraged to try to correct the interference by one or more of the following measures:

- Reorient or relocate the receiving antenna
- Increase the clearance between the equipment and receiver.
- Connect the equipment to an outlet on a circuit other than those to which the receiver is connected.
- Consult the dealer or an experienced radio/TV technician for help.

MODIFICATION: Any changes or modifications not expressly approved by the grantee of this device could void the user's authority to operate the device.

1.RF Exposure Information: “FCC RF Radiation Exposure Statement Caution: To maintain compliance with the FCC’s RF exposure guidelines, place the product at least 20cm from nearby persons.”

2.The device for operation in the band 5150–5250 MHz is only for indoor use to reduce the potential for harmful interference to co-channel mobile satellite systems.

LIMITED WARRANTY

Fiture Holding LLC ("FITURE", "we", or "us") extends the following Limited Warranty (the "Limited Warranty") to you, a consumer who has purchased our new FITURE product ("FITURE Product"). This Limited Warranty covers only you and applies only to your non-commercial, in-home, indoor use of the FITURE Product, subject to the exclusions and limitations below. Any other use of the FITURE Product will void this Limited Warranty. Capitalized terms used but not defined in this Limited Warranty will have the meanings given to them in FITURE's Terms of Service. The Limited Warranty applies, subject to the exclusions and limitations below, only for valid warranty claims made during the applicable Limited Warranty period described below and only so long as the applicable covered FITURE Product remains in the possession of the original purchaser, or, for gifted FITURE Product, the owner of the original membership attached to that FITURE Product.

SCREEN, FRAME AND HARDWARE COMPONENTS: 12 MONTHS

FITURE warrants that the screen, frame, and all originally incorporated hardware components of FITURE Product will be free from defects in workmanship and materials for a period of 12 months from the date of original delivery.

LABOR: 12 MONTHS

For a FITURE Product originally delivered and installed (if applicable) by FITURE or a third party authorized by FITURE, FITURE will cover the labor cost for an authorized third party to make the repair or replacement under this Limited Warranty for a period of 12 months from the date of original delivery. Except where applicable law requires otherwise, repair labor is not covered for locations where FITURE did not originally deliver and install the FITURE Product or the FITURE Product is moved to a location that is outside FITURE's service area.

EXCLUSIONS AND LIMITATIONS

Who and what is covered:

- The original purchaser and owner of the FITURE Product. The FITURE Product must remain in the possession of the original purchaser, or, for a gifted FITURE Product, the owner of the original membership attached to that FITURE Product. This Limited Warranty is not transferable.
- If a defect arises in the FITURE Product or a warranted component within the applicable Limited Warranty period, the purchaser's sole and exclusive remedy is for FITURE, at FITURE's discretion to the extent permitted by law, either replace or repair the defective or malfunctioning FITURE Product or component with the same or a comparable model.
- Any replacement or repaired component shall be warranted for the remainder of the original Limited Warranty period or 30 days, whichever is longer, or for any additional period that is required by applicable law. What is NOT covered?
- FITURE does not provide any warranties for any gifts (such as heart rate monitor or any other accessories) that **are** provided to you as a present, or as a promotional product free of charge (if applicable). Such free gifts do not constitute part of the sale.
- Any other FITURE products or services, non-FITURE products or services, labor, units that are, or that FITURE reasonably believes to be, stolen, counterfeit, or purchased from an unauthorized distributor or reseller, units purchased or used outside the U.S., and units missing serial numbers.

- Software, even if sold with or embedded in the FITURE Product, or Internet connectivity.
- Damage or loss of access as a result of FITURE's termination or suspension of your account.
- Data loss and any costs associated with data recovery (if applicable).
- Defects, damage or equipment failure arising from (i) normal wear and tear; (ii) improper or negligent assembly, maintenance, or use (including but not limited to, using or storing the FITURE Product outside (or otherwise exposed to the elements) or in temperatures outside the recommended range); (iii) installation, repair (other than normal repair provide by FITURE), relocation or removal of the FITURE Product; (iv) use of the FITURE Product with parts or accessories from third parties, or with parts or accessories not originally intended for or compatible with the FITURE Product; (v) use not in conformity with FITURE guide, manual or technical specifications; or (vi) any use contrary to or in breach of the FITURE Terms of Service or other instructions provided with the FITURE Product or by FITURE.

EXCLUSIONS AND LIMITATIONS

Damage or equipment failure due to accident, abuse, improper or abnormal use, neglect, corrosion, discoloration of paint or plastic (or any other change in cosmetic appearance that does not affect performance), theft, vandalism, fire, flood, wind, lightning, freezing or other natural disasters or acts of God of any kind, electrical wiring, power reduction, power fluctuation or power failure from whatever cause, unusual atmospheric conditions, collision, introduction of foreign objects, or modifications that are unauthorized or not recommended by FITURE.

Any attempt to modify or replace any component of the FITURE Product or modify, delete, add, or install software not provided with the FITURE Product by FITURE.

- Incidental or consequential damages. FITURE is not responsible or liable for indirect, special, incidental or consequential damages, economic loss, loss of property or profits, loss of enjoyment or use, or other consequential damages of any nature whatsoever in connection with the purchase, use, repair or maintenance of equipment or parts. FITURE does not provide monetary or other compensation for any such repairs or replacement parts costs, including but not limited to gym membership fees, work time lost, cost of substitute equipment, diagnostic visits, maintenance visits or transportation.

Any use for commercial purposes or other purposes other than a single family or household's in-home, in door use.

Any attempt to move or repair fitness equipment creates a risk of injury and property damage. FITURE is not responsible or liable for any damage or injury incurred during, or as a result of, any move, repair or attempted repair of equipment by anyone other than a FITURE authorized service technician. All moves or repairs attempted by you or your agents are **undertaken AT YOUR OWN RISK** and FITURE shall have no liability for any injury to person or property arising from such attempted moves or repairs. In addition, labor may no longer be covered if you move outside of FITURE's service area.

• FITURE does not warrant that the operation of the FITURE Product will be uninterrupted or error-free.

- Where permitted by law, replacement units, parts and electronic components reconditioned to as-new condition by FITURE or its vendors may sometimes be supplied as warranty replacement and constitute fulfilment of warranty terms.

HOW TO OBTAIN WARRANTY SERVICE

- To be eligible for service under this Limited Warranty you must contact the FITURE Member Support team at hello@fiture.com, and provide FITURE with the serial number of your FITURE Product and the dated receipt, or other proof of purchase indicating the date purchased, upon discovering any nonconformity or defect.

• Claims must be made within the specified warranty period. Any disputes between you and FITURE related to this Limited Warranty or the FITURE Product will be governed by the then-current dispute resolution procedures in FITURE's Terms of Service, available at www.fiture.com/terms-of-service.

** THIS LIMITED WARRANTY IS THE EXCLUSIVE WARRANTY GIVEN BY FITURE AND SUPERSEDES ANY PRIOR, CONTRARY, OR ADDITIONAL REPRESENTATIONS OR WARRANTIES. IN NO EVENT SHALL FITURE'S LIABILITY FOR ANY CLAIM ARISING OUT OF OR RELATED TO THIS LIMITED WARRANTY EXCEED THE PRICE PAID BY YOU FOR PURCHASE OF THE FITURE PRODUCT, REGARDLESS OF THE FORM OF ACTION, WHETHER IN CONTRACT, TORT (INCLUDING NEGLIGENCE), PRODUCT LIABILITY, LOST REVENUE, LOST PROFIT, LOST DATA, OR PRIVACY, OR ANY OTHER CAUSE OF ACTION OR LEGAL OR EQUITABLE THEORY. ALL OTHER WARRANTIES, EXPRESS OR IMPLIED, INCLUDING ANY STATUTORY WARRANTY OR CONDITION OF MERCHANTABILITY OR FITNESS FOR A PARTICULAR PURPOSE, ARE DISCLAIMED EXCEPT TO THE EXTENT PROHIBITED BY LAW. IN SUCH EVENT, SUCH WARRANTY IS LIMITED TO THE DURATION OF THE WARRANTY PERIODS SET FORTH ABOVE. THIS EXCLUSION APPLIES EVEN IF THIS LIMITED WARRANTY FAILS OF ITS ESSENTIAL PURPOSES AND REGARDLESS OF WHETHER DAMAGES ARE SOUGHT FOR BREACH OF WARRANTY, BREACH OF CONTRACT, NEGLIGENCE, STRICT LIABILITY IN TORT, OR UNDER ANY OTHER LEGAL THEORY. SOME JURISDICTIONS DO NOT ALLOW FOR THE DISCLAIMER OF CERTAIN WARRANTIES,*

