

Camera

Quick Start Guide

Please read this manual carefully and keep it properly before using our network camera products.

Related tools and documents of products, please download from <http://www.herospeed.net>.

Statement

- Thank you for using our products, please read this manual carefully before trying.
- This manual is applicable to network series products.
- This manual may contain information that is technically inaccurate, inconsistent in the product's function and operation, or in a typographical error. Our company will update the context in the manual according to the enhancement of product features. Updated content will be added in the new version of this manual without further notice.
- If there is manual description of the product does not match with the physical, in order to prevail in kind.

Safety Precautions

- Please avoid installing the product in a vibration or shock environment, and keep the product away from electromagnetic interference (ignoring this may damage the product).
- In order to avoid heat accumulation, please keep good ventilation around the device, and do not block the vent of the device.
- Do not install indoor products in an environment that may be exposed to water or other liquids.
- Do not use the product in extremely hot, cold, dusty, or high humidity environments.
- This equipment must be stored in a dry and non-corrosive gas environment, and avoid direct sunlight.

- Please avoid pointing the lens at strong light (such as lighting, sunlight or laser beam, etc.), otherwise it will damage the sensor.
- Power must be under safety certification, Its output voltage, current, voltage polarity and operating temperature must comply with the power requirements of this equipment.
- When using this equipment in thunder and lightning conditions, please pay attention to install lightning protection device or cut off the power.
- In order to get high quality video and pictures, make sure your internet connection is stable and smooth.
- When the device is connected to the Internet, it may face network security issues. Please strengthen the protection of personal information and data security.
- Please understand that you are responsible for properly configuring all passwords and other related product security settings, and keeping your user name and password properly.


1. Network Setting

The default IP of all cameras is 192.168.1.168. The IPv4 address of the computer must be in the same network segment as the IP address of the IP camera. To enable the camera to access the network smoothly, plan the available IP network segments based on the actual network environment.

Prepare the network configuration:

(1) Add the same network segment IP as 192.168.1.168 (camera factory default IP) in the computer, such as 192.168.1.165.

Steps to add an IP address to the Windows system:

Step 1: Click []Start → [Control Panel] → [Network and Sharing Center] → [Local Network] → [Properties] → [Internet Protocol Version 4 (TCP/IPv4)] → [Advanced] to enter the advanced TCP/IP setting interface.

Step 2: Click [Add] in the IP address (R) position, enter the IP address as 192.168.1.165 and the subnet mask 255.255.255.0, and click [Add] → [OK] → [OK] → [OK].

(2) Connect camera and PC by network cable in the same LAN, power on. Connecting as following (PoE switch, camera, PC connection photo).



The network configuration steps are as follows:

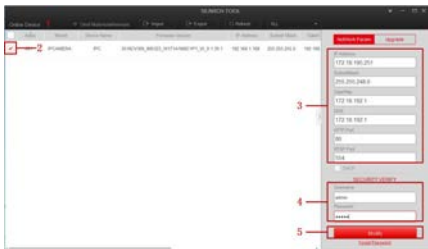
Step 1: Open [ Search Tool] (Version 7.2.45.6 and above, please install Search Tool from <http://www.herospeed.net>).

Step 2: Check 192.168.1.168.

Step 3: Modify the relevant network parameters such as IP on the right side of the interface

Step 4: Enter the user name (default is admin) and password (default is admin) of the device.

Step 5: Click [Modify] → [Confirm].



Step 6: Click [Refresh] to find the IP address that has been modified, which means that the network configuration is successful.



NOTE: When configuring network parameters, ensure that the IPC address and the computer's IPv4 address are on the same network segment.

2. Modify password

Step 1: Open the IE browser, enter the IP address of IP Camera (if the IP has not been modified, please enter the default address <http://192.168.1.168>), and press [Enter].

Step 2: Enter the user name (default is admin) and password (default is admin) of the device, and click [Login].



Step 3: Click [Modify], enter the password, confirm the password, and set the security question, click [Key Export] → [Save].

User Management

Users to edit

User Name	<input type="text" value="admin"/>
User Type	<input type="text" value="Admin"/> ▼
Old Password	<input type="text"/>
<input type="checkbox"/> Modify Password	
Password	<input type="text"/>
<hr/> <hr/> <hr/>	
<p>The length of the password is 8 to 31 digits, and only two or more combinations of numbers, lowercase letters, uppercase letters, and special characters (-!@#\$%^&* _+= ;.,/?) can be used</p>	
Confirm Password	<input type="text"/>
<input type="checkbox"/> Do you want to set a new security question	
Security issue1	<input type="text"/> ▼
Answer1	<input type="text"/>
Security issue2	<input type="text"/> ▼
Answer2	<input type="text"/>
Security issue3	<input type="text"/> ▼
Answer3	<input type="text"/>

If you forget the security problem and don't have the key file, you need to return the equipment to the factory.

3. Real-time Preview

Step 1: Click [Download plugin], download the plug-in, close the browser, and follow the prompts to install the plug-in.

Step 2: Open the browser and log in to the IPC WEB interface again to preview the real-time video.

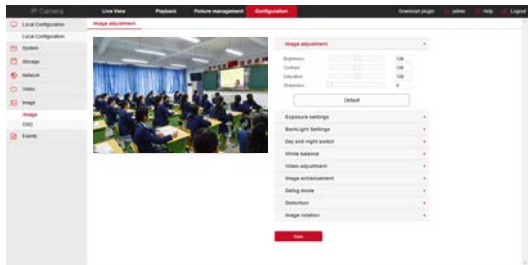


NOTE: If the browser you use is not IE, you can directly enter the preview video interface without installing a plug-in.



4. Parameter Configuration

Click [Configure] can enter the device configuration interface, there are local configuration, system, local network, video, image, event and other functional configurations. Users can set these functions according to the actual situation of the application scenario to achieve the best monitoring effect.



5. Wi-Fi Configuration

The steps for connecting IPC to wifi are as follows:

Step 1 : After logging in, click [Wifi Configuration] to enter the WiFi configuration interface.

Step 2 : Click [Scan] to search for nearby WiFi hotspots;

Step 3 : Select the WiFi to be connected and enter the WiFi password in the key bar.

Step 4 : Enable [DHCP], click [Save].

NOTE:

- When the camera is connected to wifi, you can also choose not to enable DHCP. Enter and select the preferred DNS server IP address of the same WiFi network segment manually, select the default gateway, and set the WiFi network information of the camera.
- The wifi IPC can remember up to 3 connected Wifi accounts.
- Wireless IPC management : Wifi IPC can remember the connected Wifi account. You can connect or delete Wifi account for the device through wireless Wifi management.

Wifi

Scan

	SSID ▲	Encryption ↕	Signal Strength ↕	channel ↕
<input type="checkbox"/>	03WFI	WPA-PSK	94	6
<input type="checkbox"/>	04wifi	WPA-PSK	100	11
<input type="checkbox"/>	111111	WPA-PSK	99	6
<input type="checkbox"/>	360123	WPA-PSK	42	11
<input type="checkbox"/>	360免费WIFI-7Z	WPA-PSK	78	7
<input type="checkbox"/>	360免费WIFI-XD	WPA-PSK	89	11
<input type="checkbox"/>	@PHICOMM_E9	WPA-PSK	100	4
<input type="checkbox"/>	CMCC-g3xF	WPA-PSK	100	10
<input type="checkbox"/>	CMCC-Rk7d	WPA-PSK	83	4
<input type="checkbox"/>	DIRECT-PNDESKTOP-CBOFUNGmsXO	WPA-PSK	100	11

Wireless Wifi Management

SSID ▲	Encryption	Connect	Delete ↕

Status

SSID

Key

Encryption

None DHCP

IP Address

Netmask

Default Gateway

Preferred DNS Server

6. Smart Event

Click [Configuration]→[Events]→[Smart Event] to enter the Smart Event configuration interface, Smart IPC supports Intelligent Detection, Intrusion Detection, Line Cross Detection, Loiter Detection, and People Gather Detection.

- **Intelligent Detection:** In the Smart event interface, click [Intelligent Detection], select the detection mode and [Upload face capture to FTP], click [Save].



NOTE: After the smart detection is set, the smart events (intrusion detection, line cross detection, loiter detection, and people gather detection) will trigger the alarm according to the set detection mode.

- **Intrusion Detection:** In the Smart event interface, click [Intrusion Detection] → [Enable], select the Warn Region, draw the intrusion area, time threshold, sensitivity, arming schedule and linkage method.

- **Line Cross Detection :** In the Smart event interface, click [Line Cross Detection] → [Enable], select the Warn Region, and draw the line cross area, set the direction, sensitivity, arming schedule and linkage method.

- **Loiter Detection :** In the Smart event interface, click [Loiter Detection] → [Enable], select the Warn Region, and draw the loiter area, set the time threshold, sensitivity, arming schedule and linkage method.

- **People Gather Detection :** In the Smart event interface, click [People Gather Detection] → [Enable], select the Warn Region, and draw the people gather area, set the proportion, arming schedule and linkage method.



7. NVR adds IPC

Before adding devices, please make sure that the IP addresses of NVR and IPC are on the same network segment and do not conflict. Click [Channel] → [Camera] → [Search] under the NVR main menu, check the devices to be added, and click [Add].

NOTE: In the main menu of NVR, you can also perform operations such as video settings, video playback, motion detection, and encoding parameter settings.

8. iVMS320 Client Access

Step 1: Open your browser and visit <http://www.hero-speed.net/>.

Step 2: Click [PC Client] → [iVMS320 (Windows)] or [iVMS320 (Mac)] to download the latest version of the video management system [iVMS320].

Step 3: Follow the prompts to install and add devices to view and manage the devices.

9. Mobile App Access

Scan the QR code below to download and install the BitVision App.



After registering and logging in, you can add the device, and remotely view and manage the device on the mobile phone.

Disclaimer

The following exemptions or limitations of liability, please pay special attention to:

- As a result of the following reasons, if the product interrupts or terminates the service for any of the following reasons, the company shall not be liable for personal injury or property damage to you or a third party. Failure to install or use properly as required; for the sake of national or public interest; force majeure; your own or third-party reasons (including but not limited to the use of third-party products, software or components, etc.
- The company has not expressed or implied that this product is applicable to special purpose. This product may not be used in medical / safety equipment or other applications where there is a breakdown of the product that could result in life-threatening or personal injury, as well as hazardous or non-humanitarian hazards such as weapons of mass destruction, biological and chemical weapons, nuclear explosions or any unsafe use of nuclear energy use. Any loss or liability arising out of the above use will be at your own risk.
- This product, when properly installed and used, can detect unauthorized intrusion during a particular delight but can not avoid accidents or personal injury or property damage. In your daily life, you should be vigilant and strengthen your safety awareness.
- The Company is not responsible for any indirect, incidental, special punitive damages, claims, loss of property or loss of any data or documents. To the maximum extent permitted by law, the liability for compensation of company is not exceed than the amount you paid for this product.

FCC Caution:

This device complies with part 15 of the FCC Rules. Operation is subject to the following two conditions: (1) This device may not cause harmful interference, and (2) this device must accept any interference received, including interference that may cause undesired operation.

Any Changes or modifications not expressly approved by the party responsible for compliance could void the user's authority to operate the equipment.

Note: This equipment has been tested and found to comply with the limits for a Class B digital device, pursuant to part 15 of the FCC Rules. These limits are designed to provide reasonable protection against harmful interference in a residential installation. This equipment generates uses and can radiate radio frequency energy and, if not installed and used in accordance with the instructions, may cause harmful interference to radio communications. However, there is no guarantee that interference will not occur in a particular installation. If this equipment does cause harmful interference to radio or television reception, which can be determined by turning the equipment off and on, the user is encouraged to try to correct the interference by one or more of the following measures:

- Reorient or relocate the receiving antenna.
- Increase the separation between the equipment and receiver.
- Connect the equipment into an outlet on a circuit different from that to which the receiver is connected.
- Consult the dealer or an experienced radio/TV technician for help.

This equipment complies with FCC radiation exposure limits set forth for an uncontrolled environment. This equipment should be installed and operated with minimum distance 20cm between the radiator & your body.