

---

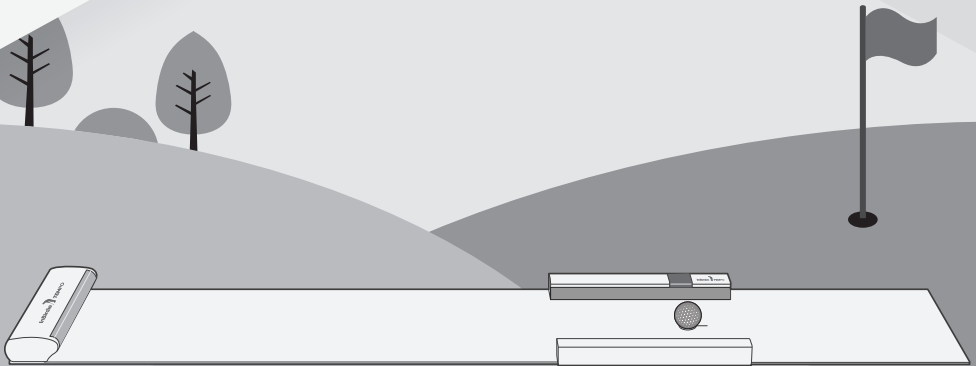
# InBirdie User Manual

---



# InBirdie TEMPO

InBirdie TEMPO



[www.inbirdie.com](http://www.inbirdie.com)

Please read User Manual carefully for correct use.

# Start InBirdie TEMPO

The distance defaults are set in meters (m).  
To change them into feet (ft), please proceed with the following steps:

**Step 1.** Install an InBirdie game app.

**Step 2.** Link the app to InBirdie TEMPO.

**Step 3.** Change the unit (m → ft) on the SETUP menu.

\*Refer to USER MANUAL on page 12 for app installation.

Scan the QR code below and check  
the menus of the InBirdie game app.



# FAQs

## **Q. Is the InBirdie game app compatible with TV sets (or personal computer)?**

A. The InBirdie game app is not designed for TV. It is available in Android and iOS versions. Many users have connected the app with TV. However, it is their smartphone and smart TV, not the app, which made such connection possible.

\*How to enable screen sharing and mirroring with smart TV and smartphone

## **Q. The distance on the screen differs from the actual distance on a mat.**

A. It is normal that the actual distance on a putting mat and InBirdie measurements are different. The putting distance on InBirdie is the value calculated based on the preset green speed. The default green speed is 2.6m (8.5ft).

## **Q. The angle appears to be incorrect.**

A. InBirdie is a practice machine designed for users to strike the ball with a square clubface and control the distance (speed). Therefore, it measures the angle and speed after putting very precisely. After such measurement, the ball rolling toward a reflector can change its direction, influenced by the slope, mat conditions (texture, folds) and others. If a sensor is installed on the reflector, not at the starting point, the results can differ whenever you strike the ball, making your practice inconsistent. InBirdie measures angle and speed right after start to avoid such inconsistent results under different environments. With InBirdie, you can practice according to the putting angle, not to the direction you can see with your eyes, and build a consistent putting stroke.

\*Put the ball in the START position. Otherwise, a measurement error may occur.

## **Q. I cannot connect this machine with my smartphone.**

A. For this connection, you need to turn on both Bluetooth and location data. If it keeps failing, reinstall the app and reset your smartphone.

## **Q. The distance measurement fails occasionally.**

A. When an uncertain value is detected, the results do not appear because the machine is designed to provide accurate values only. Check surroundings (e.g., direct sunlight, etc.) and try again.

## **Q. I want to change target distance with a putter, but it is not recognized.**

A. If the putter face is black, target distance may not be adjusted. In this case, you can change the target distance with the other object which is not black. You can also change the target distance more easily, using the app. Ensure that unlike this adjustment of target distance, putting distance, angle and tempo are measured correctly even with a black putter.



InBirdie is a registered trademark of DMBH  
(InBirdie TEMPO)

---

# CONTENTS

- Thank you very much for purchasing InBirdie, the digital putting practice system.
- This user manual describes how to use the product including cautions and functions . Please read carefully for safe and convenient use. Please keep the manual in a conspicuous place.
- Refer to various products and data provided on the website ([www.inbirdie.com](http://www.inbirdie.com)) to enjoy long putting practices with InBirdie and polish your birdie without any limit on space.
- This user manual may contain technical or editorial omission or error, based on the time of production. The figures contained in this manual may partially vary from the actual product, or actual design may vary from advertisement.
- The exterior or specifications of the product may be subject to change without notice for quality improvement. All rights of the design and S/W belong to DMBH Co., Ltd. This product is protected by copyright laws.



<b>InBirdie TEMPO Introduction</b>	<b>7</b>
1. Precautions (Product Use)	7
2. Product Specifications	7
3. Product Composition	7
<b>InBirdie TEMPO How To Use</b>	<b>9</b>
1. Basic Operation	9
2. How to Change Green Speed	10
3. How to Use Putting Tempo Function	11
<b>How to use InBirdie Game App</b>	<b>12</b>
1. How to Install App	12
2. How to Run App	12
3. How to Connect App	12
4. Main Menu	13
5. App Configuration	14
<b>InBirdie Game APP Directions</b>	<b>17</b>
<b>InBirdie Green Speed Standards</b>	<b>18</b>

### ※Precautions during use

- **Please make sure to use the power socket that meets the input power specifications of the product.**
- Do not put any object within 10cm from the right side of the main body.
- Do not disassemble, or the product will be disqualified for A/S or quality assurance.
- For cleaning, remove the power cord. Keep InBirdie away from water. Do not wipe InBirdie with chemicals or alcohol.
- Do not store in a place with direct sunlight or chemical substances.
- Direct sunlight may cause malfunction. Avoid direct sunlight.
- Do not touch the machine with a wet hands to avoid any risk of electric shock.

# InBirdie TEMPO Introduction

## Precautions (Product Use)

- Please make sure to use the correct power according to the input power specifications of the product.
- DO NOT place any object within 10cm of the right side of the product.
- Do not disassemble or assemble the product arbitrarily. You won't be able to receive quality assurance (A/S).
- Strong impact on the main body of the product may cause serious problems with the operation of the product.
- Make sure to remove the power cord before cleaning the product. Be careful and make sure that the InBirdie does not get wet. Do not wipe InBirdie with chemical substances or alcohol, etc.
- Do not touch the machine with wet hands. (Risk of electric shock)
- Do not store the product under direct sunlight or a location with chemical substances.
- Putting the product under strong direct sunlight may cause malfunction. Use the product in areas away from direct sunlight.
- In the case when the product is damaged (i.e., broken adapter, liquid is spilled on the product, shock, product is exposed to rain or moisture, etc.), please contact our customer center and repair the product before using it.
- You won't be able to receive quality assurance when a problem occurs in the product due to misuse (i.e., using the product via a method that is NOT specified in this manual).
- The warranty period of this product is ONE YEAR AFTER PURCHASE. If there is a problem with the quality of the product due to consumer negligence or natural disasters, you can receive a 'paid repair service.'
- Please contact the store where you have purchased the product for A/S and product inquiries.

## Product Specification

Product Name	InBirdie TEMPO
Public Notification of Conformity Assessment for Broadcasting & Communication Equipment (KC)	R-R-DMH-InBirdie TEMPO
Product Size (WxHxD in)	13x12x1.5
Mat Size (WxL in)	12x75
Product Weight (Including Box)	11 lb
Body & Reflector Material	Aluminum
Input Power	DC 5V (Micro 5pin cable)

\* The appearance, specification, etc. of the above product may be changed without prior notice to improve the overall quality of the product.

\* The product serial number is attached to the product instead of the manufacturing date. You can check the serial number and contact the manufacturer to ask for the manufacturing date.

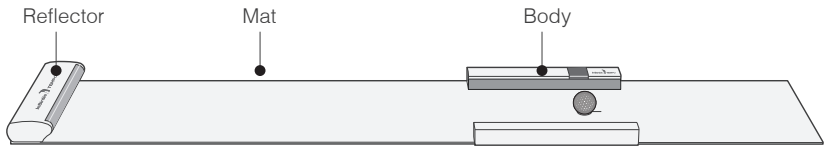


Made in KOREA

# InBirdie TEMPO Introduction

## Product Composition

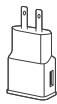
- InBirdie TEMPO



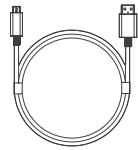
\*Reflector + Mat + Body = All-in-one



Simple Manual



Adapter



Adapter Cable  
(Micro-5pin)

※ Adapter & Adapter Cable - Optional.



# InBirdie TEMPO How to Use

## Basic Operation

**Step 1.** Connect the power to the Power Input Area of the device.

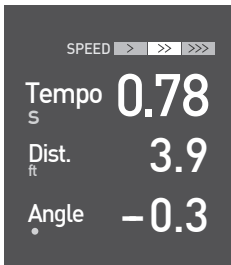
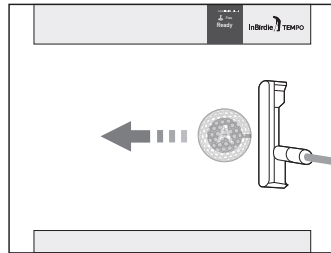
**Step 2.** When you bring the putter close to the 'target distance setting' area on the side, the 'target distance' will change sequentially. Take the putter away when the device is set to the desired target distance.

\* You can set the target distance more conveniently by linking it with the APP

**Step 3** Put the ball on position **A**

**Step 4** Now, you can practice your putting!

**[Result]** Putting Tempo | Distance |  
Putting Angle will be displayed on  
the screen.



**• Tempo :**

You can check the time (Sec) of your backswing and your follow swing

**• Distance :**

It will indicate the final distance of the putted ball in the current green speed.

**• Angle :**

It will show the starting angle of the ball in detail.

+ (Open)    0 (Square)    - (Close)

**Practice your putting in various distances while maintaining the same putting tempo and exact putting angle!**

\* If the data cannot be displayed due to incorrect/inaccurate putts, the data will not appear on the screen (N/A).

\* It will automatically enter 'sleep mode' after a period of inactivity. The display will be activated again when you place the ball in position **A**.  
(However, it is recommended that you turn off the power if you are not going to use the product for an extended period of time.)

\* To check the data more conveniently, you can set specific items that you wish to highlight in the smartphone APP.

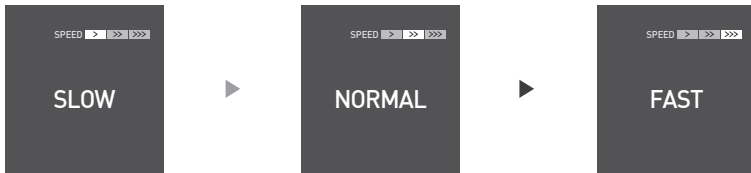
# InBirdie TEMPO How to Use

## How to Change Green Speed

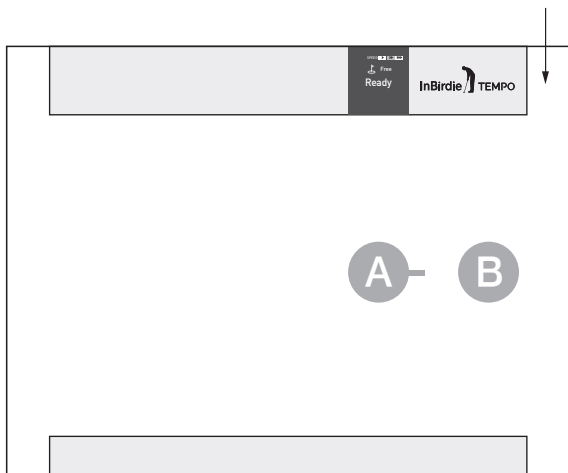
- How to Change Green Speed

\*You can easily change the green speed by using the smartphone APP (APP→Settings)

- Place the ball in position **A** & **B**. Then, bring the putter close to the 'target distance setting' area. The display will show the green speed in a sequential order (SLOW ► NORMAL ► FAST)



Target Distance Setting Area



- Remove the putter from the 'Target Distance Setting Area' when you reach the desired green speed to complete the setup.

\* The 'Green Speed' setting will be reset to 'NORMAL' whenever you turn on the device again.

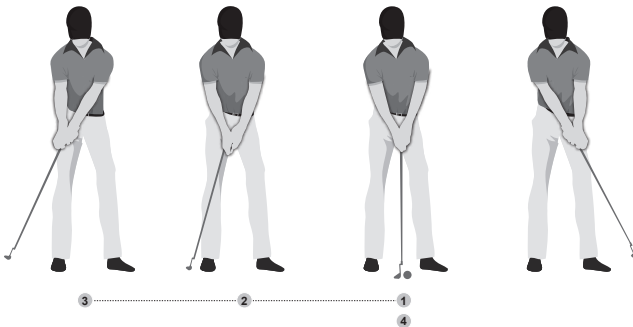
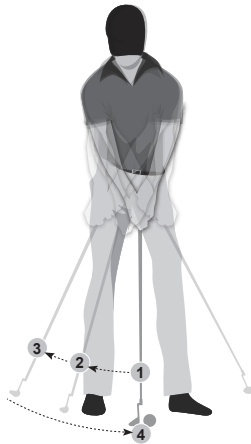
# InBirdie TEMPO How to Use

## How to Use 'Putting Tempo' Function

· You can practice your putting using the 'Putting Tempo' sound effect by linking it with the smartphone APP

\* Please check 'How to Use InBirdie Game APP' for more information

1. Start your back swing on the first beep of the tempo → Position ①
2. Place the club in the middle of the backstroke at the second beep → Position ②
3. Transition into a downswing (from the backswing) at the third beep → Position ③
4. Make the impact on the fourth beep. → Position ④



# InBirdie How to Use Game APP

## Install

Search 'InBirdie Game' in the Play Store or App Store to install the 'InBirdie Game' app.

- \* Installation available for Android and iOS phones.
- \* The app may not be compatible depending on the smartphone model or iOS version.

## Operate

Check if InBirdie TEMPO is turned on and run the 'InBirdie Game' app.

## Connect



Once the above screen appears, touch the device to connect.

- \* If the above screen does not appear, restart the app or check the information below.
- \* Check if the product is turned on!
- \* Check if your smartphone's Bluetooth and Location Services are turned on!
- \* InBirdie Game app searches devices using Bluetooth and Location Services.

# InBirdie How to Use Game APP

## Main Menu



### ① Putting Game

You can practice by freely changing the desired distance from 3ft to 60ft.

### ② 3 Distances Game

In this game, you complete missions provided for each STEP with 3 different distances. Once you succeed in a mission, you can move on to the next STEP.

### ③ Hole-in Game

This game has Hole Cups. You can set up a maximum of 6 players for a putting competition.

### ④ Hole-out Game

The green is sloped so that putting can be practiced in more diverse situations. The program supports up to 6 players for a putting game.

### ⑤ Record by Date

The amount of putting exercise (number) by day and month is automatically recorded.

\* Data records by distance and date are stored on your mobile phone and are initialized when the app is reinstalled or when the app data is deleted.

### ⑥ Record by Distance

The amount of putting exercise (number) by distance is automatically recorded.

You can check the distribution of the ball (distance and angle) by distance.

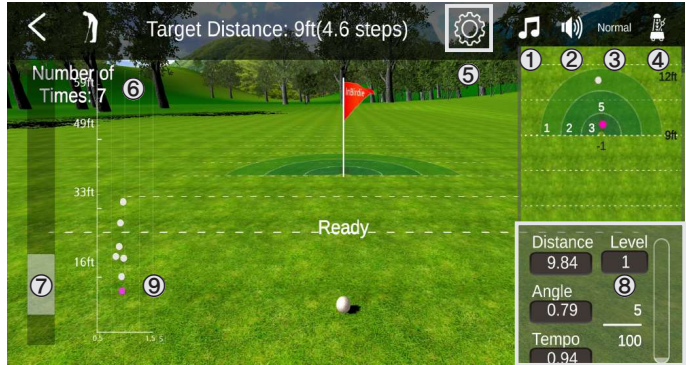
\* Data records by distance and date are stored on your mobile phone and are initialized when the app is reinstalled or when the app data is deleted.

### ⑦ Setup

You can adjust detailed settings such as language, unit change (ft/m), and volume control.

# InBirdie How to Use Game APP

## App Configuration



- ① You can turn on/off the background music
- ② You can turn on/off the sound effects
- ③ You can set the Green Speed. (FAST/NORMAL/SLOW)
- ④ You can turn on/off the Putting Tempo sound effect.  
\* The Putting Tempo sound effect will play automatically when 'Ready.'
- ⑤ You can adjust the detailed settings (i.e., tempo rhythm, etc.) by clicking on the setup icon (gear wheel)
- ⑥ 'Shows the number of putts (7) from the target distance (9ft) that you have made during this session
- ⑦ You can set the target distance (Unit: 1m) by moving the scrollbar on the left (up/down)
- ⑧ Indicates the putting distance, putting angle, putting tempo, and score (accumulated)
- ⑨ The vertical graph indicates the putting distance, and the horizontal graph indicates the putting tempo time (sec).  
\* Practice your putting at various distances without changing the putting tempo (sec).

# InBirdie How to Use Game APP

## App Configuration (Setup)

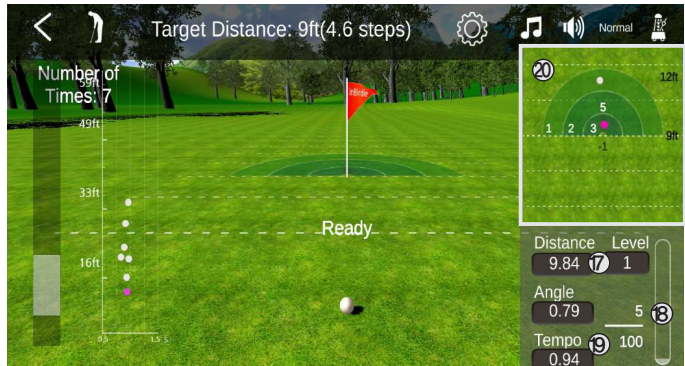


- ⑩ You can adjust the volume of the BGM.
- ⑪ You can adjust the volume of the sound effects.
- ⑫ You can change the unit used to display the distance (m/ft).
- ⑬ You can change the language.
- ⑭ You can select a specific data shown on the display and highlight it.
- ⑮ You can set the distance (length) of your 'step.'
- ⑯ You can change the rhythm of the putting tempo sound effect (beep).

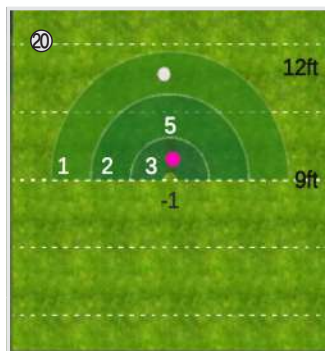
\* Find your own putting tempo rhythm to improve your putting!

# InBirdie How to Use Game APP

## App Configuration



- ⑰ Current user's level
- ⑱ Earned accumulated points
- ⑲ Points required for level up
- ⑳ Mini Map (based on target distance)



- A distribution chart of putt balls is displayed, and the location of the most recent putt ball is displayed with a purple dot ( ● ).
- Numbers 1, 2, 3, and -1 within the Mini Map are earned points and demerit points from the corresponding area.



# 'InBirdie Game' APP Directions

\*You can check InBirdie Game app manual details on [InBirdie.com](http://InBirdie.com).

For more information, visit our website ([InBirdie.com](http://InBirdie.com)).

1. InBirdie game App Manual
2. News
3. Q&As

\*InBirdie Game app may update for ability improvement, and as such, the manual on the homepage may differ.  
(The manual is updated after the app is updated)

Scan the QR code below and get the information you want!



# InBirdie Green Speed Standards

## InBirdie Green Speed Standards

(1ft = 30.48cm)

	Tournament Course		Normal Course
<b>Fast</b>	10.5ft (3.2m)	*InBirdie F Mode	8.5ft (2.6m)
<b>Slightly Fast</b>	9.5ft (2.9m)		7.5ft (2.3m)
<b>Normal</b>	8.5ft (2.6m)_Default	*InBirdie N Mode	6.5ft (2.0m)
<b>Slightly Slow</b>	7.5ft (2.3m)		5.5ft (1.7m)
<b>Slow</b>	6.5ft (2.0m)	*InBirdie S Mode	4.5ft (1.4m)

\* InBirdie's Green Speed is based on the 'Stimp Meter' method set by the USGA

\* The measurement method of InBirdie's Putting Distance is based on the table shown above

Therefore, the actual 'rolling distance' on the mat and the distance displayed in the data may be different.

### FCC Compliance Statement

This device complies with part 15 of the FCC rules. Operation is subject to the following two conditions: (1) This device may not cause harmful interference, and (2) this device must accept any interference received, including interference that may cause undesired operation.

### FCC Interference Statement

This equipment has been tested and found to comply with the limits for a Class B digital device, pursuant to part 15 of the FCC Rules. These limits are designed to provide reasonable protection against harmful interference in a residential installation. This equipment generates, uses and can radiate radio frequency energy and, if not installed and used in accordance with the instructions, may cause harmful interference to radio communications. However, there is no guarantee that interference will not occur in a particular installation. If this equipment does cause harmful interference to radio or television reception, which can be determined by turning the equipment off and on, the user is encouraged to correct the interference by one of the following measures:

- Reorient or relocate the receiving antenna.
- Increase the separation between the equipment and receiver.
- Connect the equipment into an outlet on a circuit different from which the receiver is connected.
- Consult the dealer or an experienced radio/TV technician for help.

### FCC Caution

Any changes or modifications not expressly approved by the party responsible for compliance could void the user's authority to operate this equipment. This transmitter must not be co-located or operating in conjunction with any other antenna or transmitter.

### FCC Radiation Exposure Statement

This equipment complies with FCC radiation exposure limits set forth for an uncontrolled environment. This equipment should be installed and operated with minimum distance 20 cm between the radiator and your body. This transmitter must not be co-located or operating in conjunction with any other antenna or transmitter.



**DMBH Co., Ltd.**

Rm. 603, B/D 401, Bucheon Technopark

655, Pyeongcheon-ro, Wonmi-gu, Bucheon, Gyeonggi-do, Korea(South)

[www.dmbh.co.kr](http://www.dmbh.co.kr)