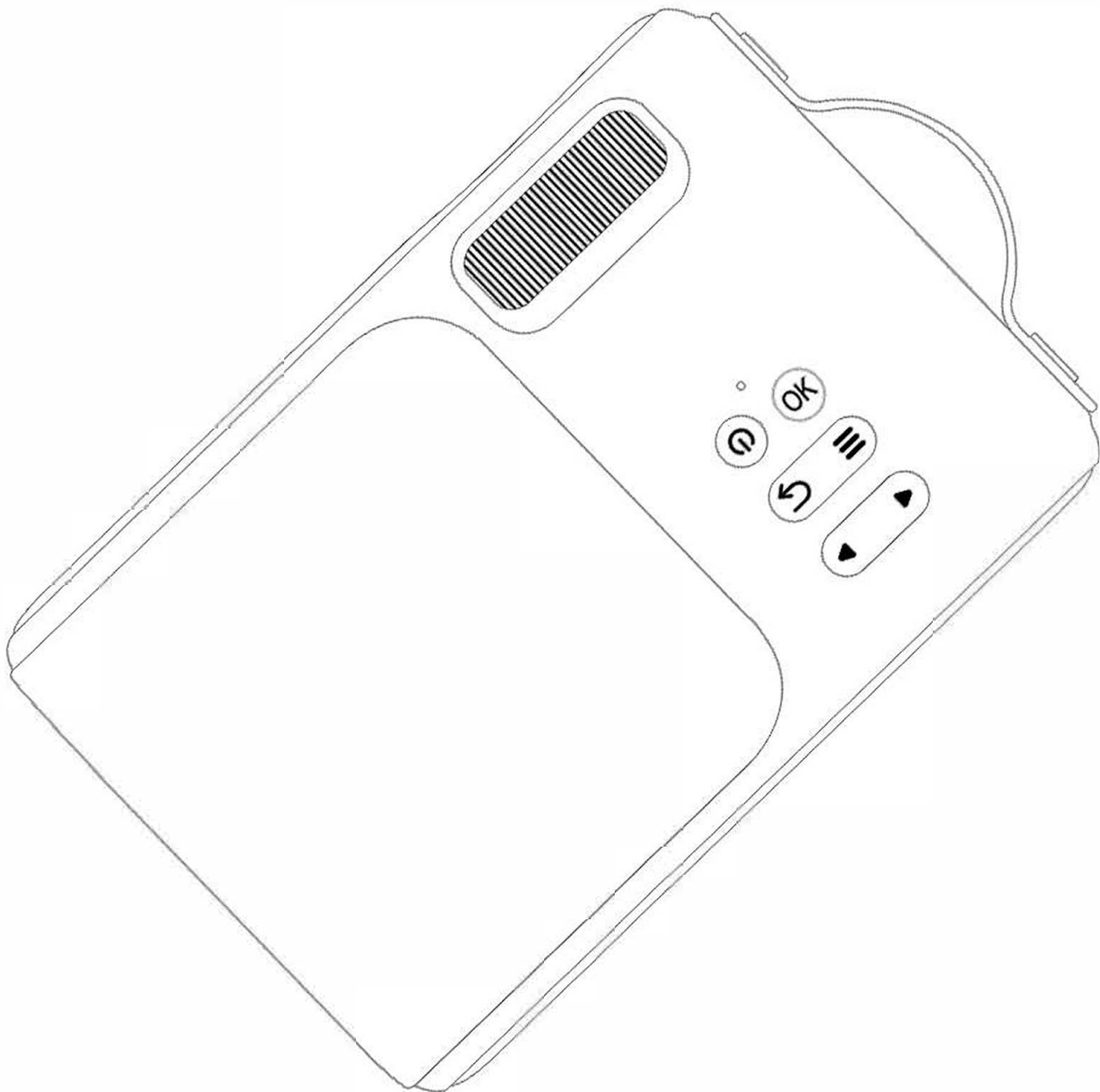


Mini Projector

USER MANUAL

Model : Q2



Please read the manual before use and keep it for future reference.

GREETING

Thank you for choosing us!

We are aim to provide quality projectors
which is safe and good movie present.

Please check the user manual to fast start

Hope you have a nice time with it!



WARNING

Please do not open the outer case in order to prevent electronic shock. Please do not repair parts of inside device.

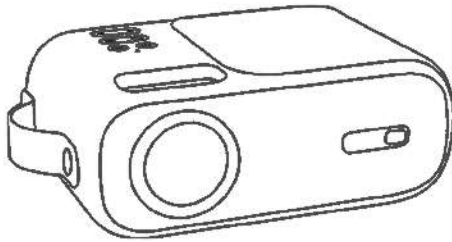
Please contact professional maintenance staff to repair it.

■ Notion & Warning

1. With this 480p Mini LCD Projector, you can enjoy the movie, sports, pictures, music and what you like in maximum 120 inches dynamic image.
2. As it's portable small projector, we recommended to use in dark enviroment to get the best result.
3. This product can support AV/ HDMI/ USB port with different devices.
4. The product has build-in speakers to match basic function use. Could also connect an external speaker or headset through 3.5mm audio interface.
5. The product adopts LED as the light sourse, it's use up to 60,000 Hours.
6. Better use below 40°C enviroment, don't cover the fans vent, avoid the water and wet.

Not recommeded for Word or spreadsheet use.
This projector is not suitable for eduction class
or office meeting.

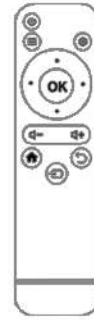
PACKING INCLUDED



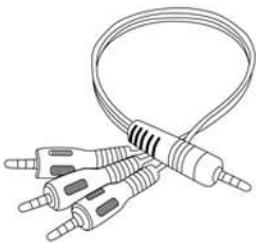
Projector



Power Cable



Remote
Controller



AV Cable

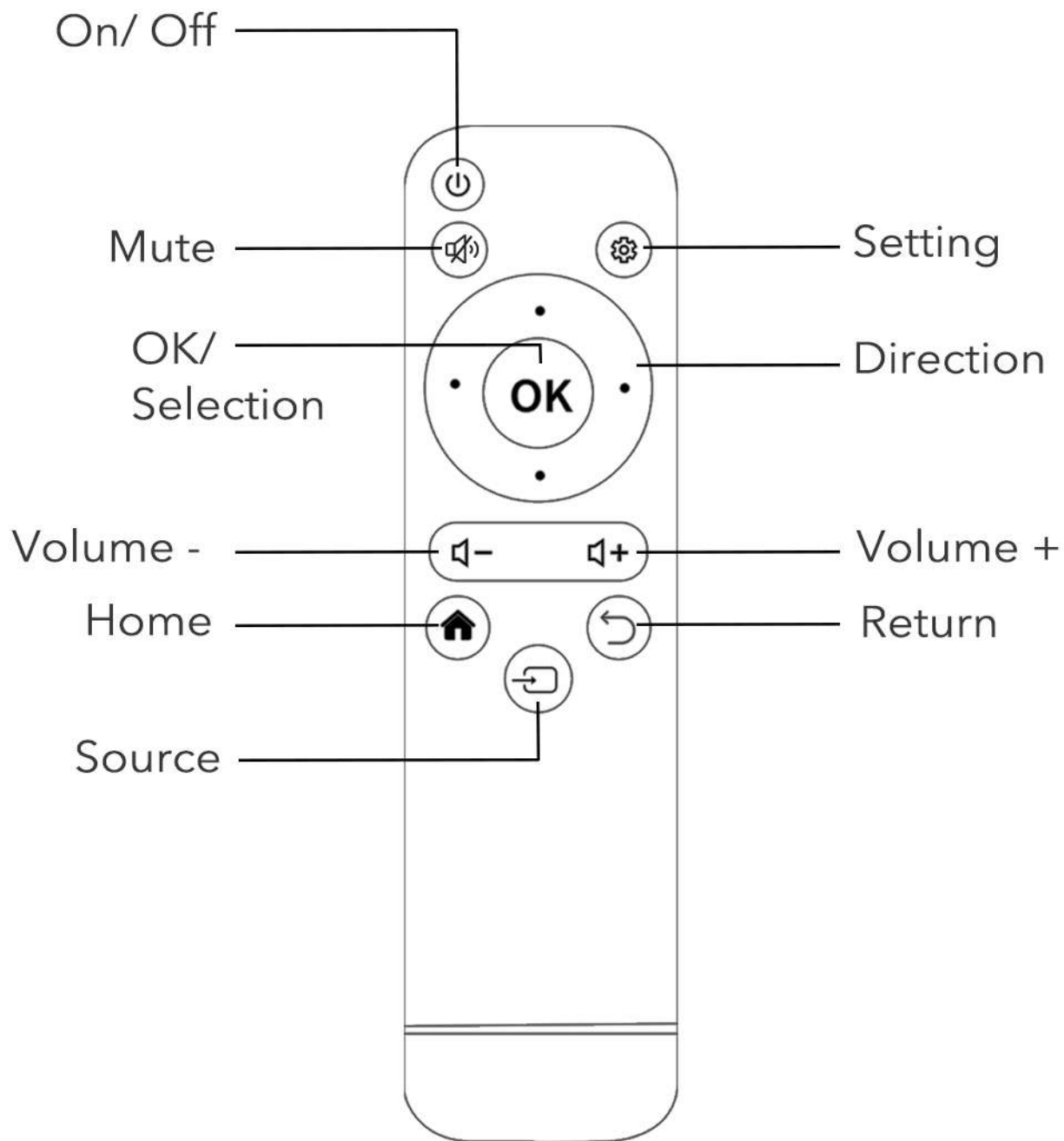


HDMI Cable



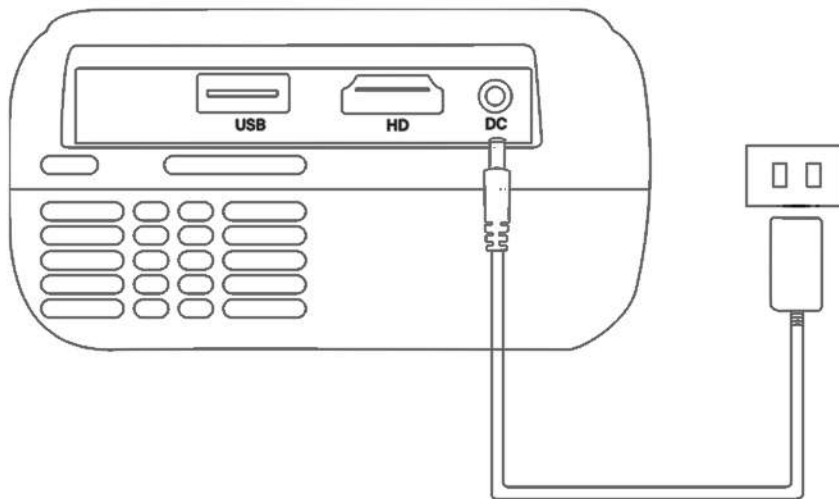
User Manual

REMOTE CONTROL

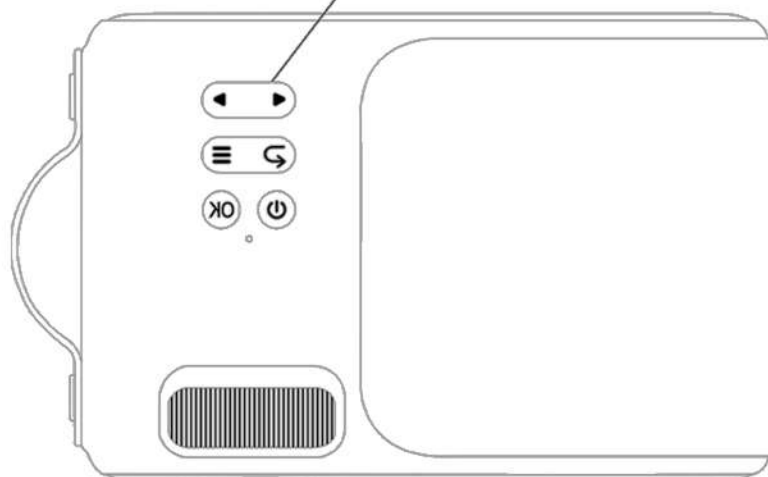
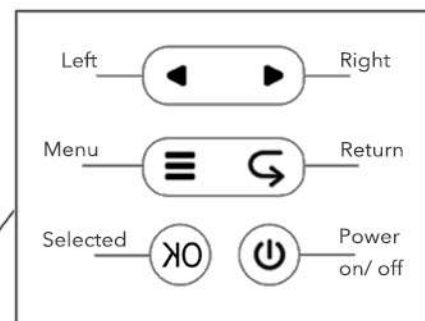


POWER CONNECTION

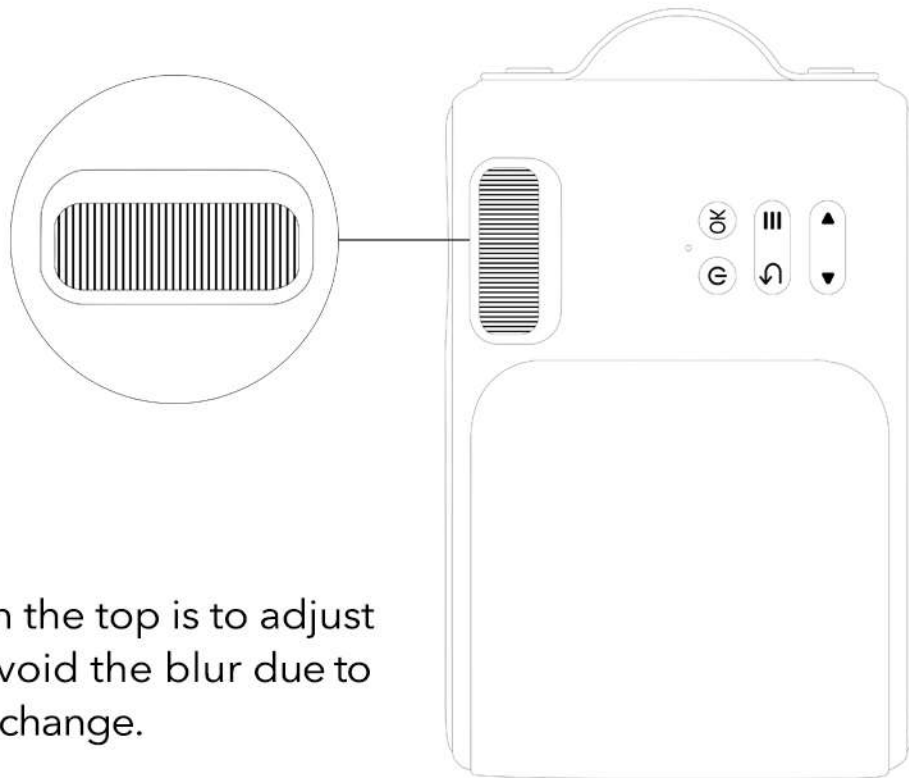
1. Connect the DC cable to the projector and the power board.



2. one-press 'Power' to start or turn-off the projector.
3. 'Menu' to go the main menu, select your media or function.



OPERATION GUIDE

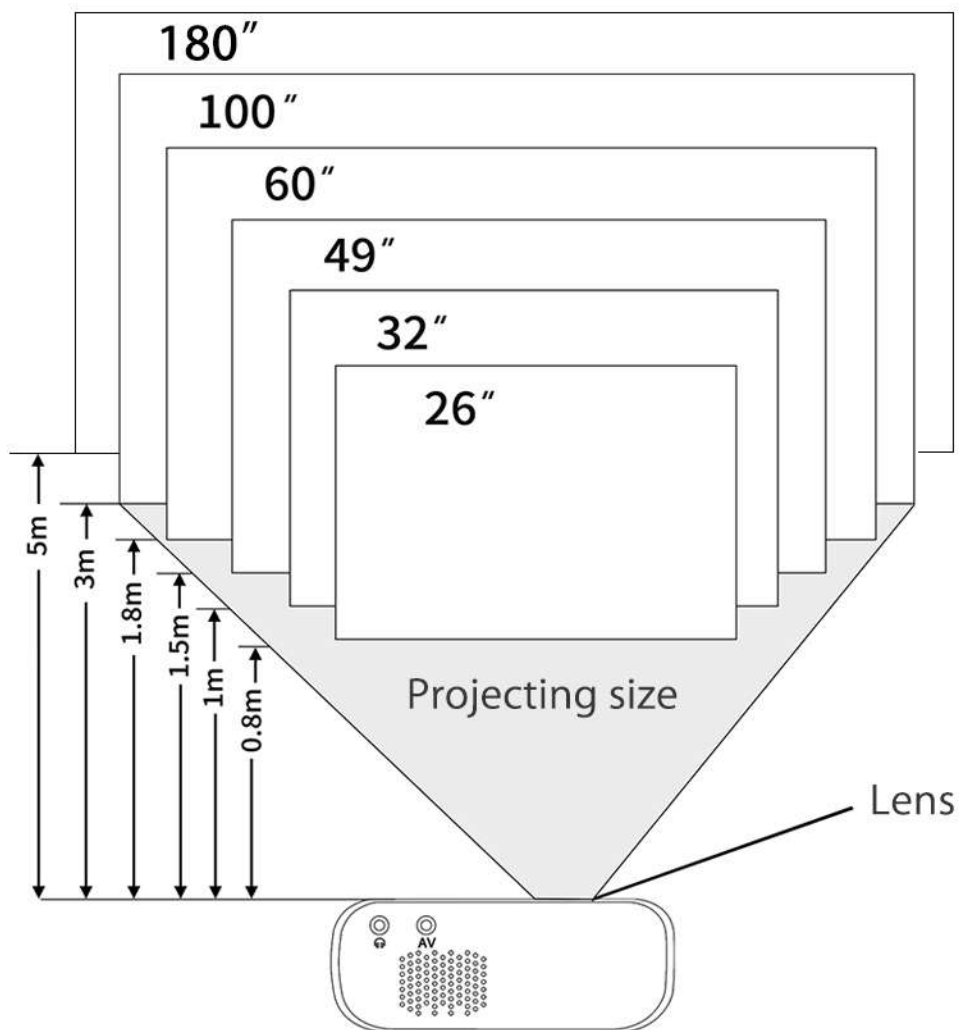


4. The roller on the top is to adjust 'Focus', to avoid the blur due to the distance change.

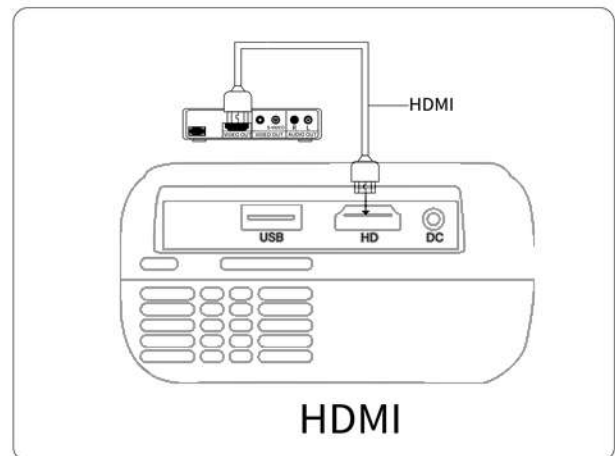
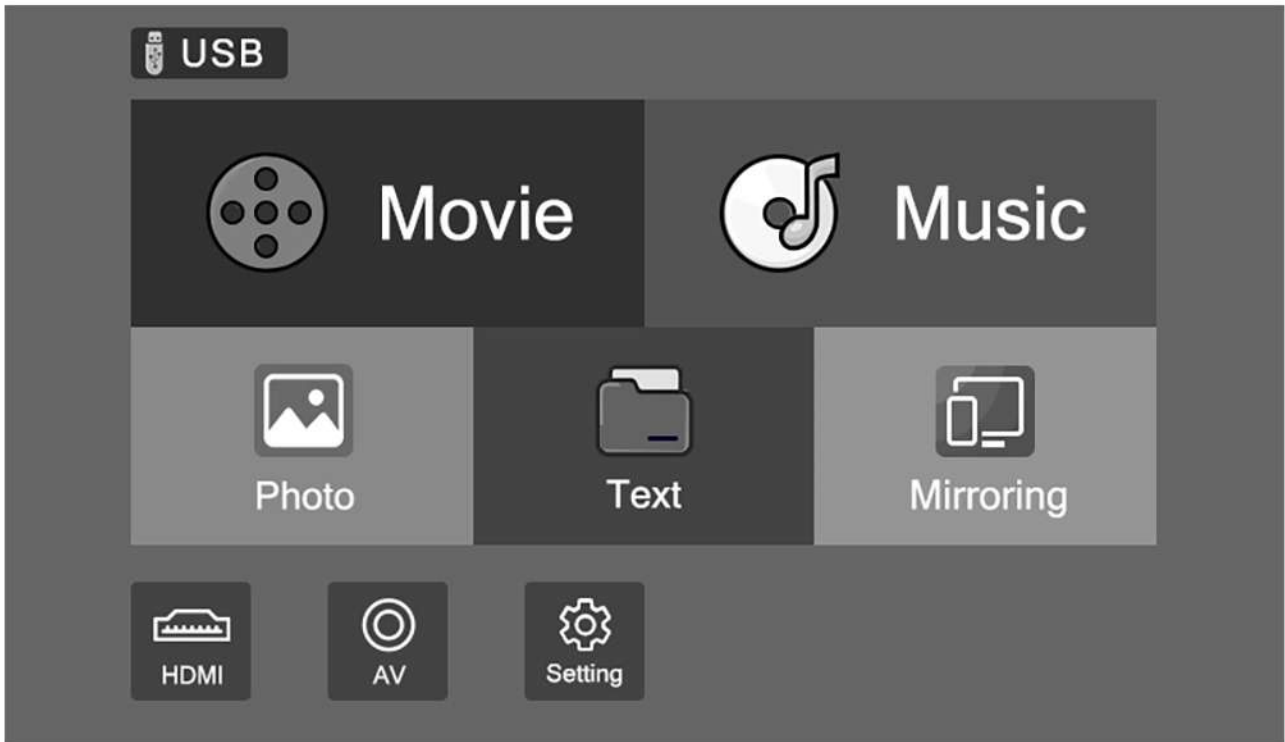



PROJECTING & SETTING

1. Press the 'setting' Button on the screen or remote control, to select the mode you need, like projecting way, picture mode, audio mode and etc.
2. System setting: you could also set the language mode, time mode, restore setting and etc by 'setting' with left and right switching menu.
3. Projecting size:
* for refernece only, The best recommend projector distance is between 1-1.8M.



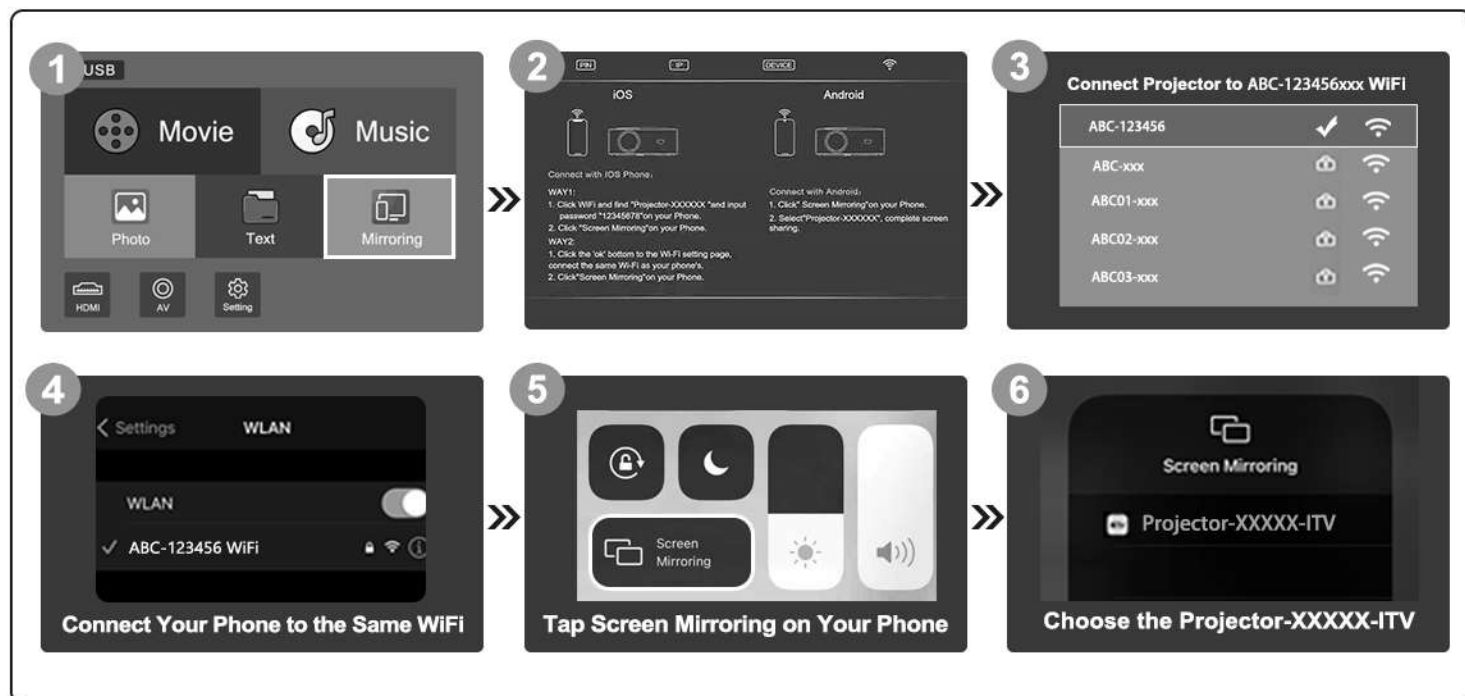
STANDARD CONNECTION



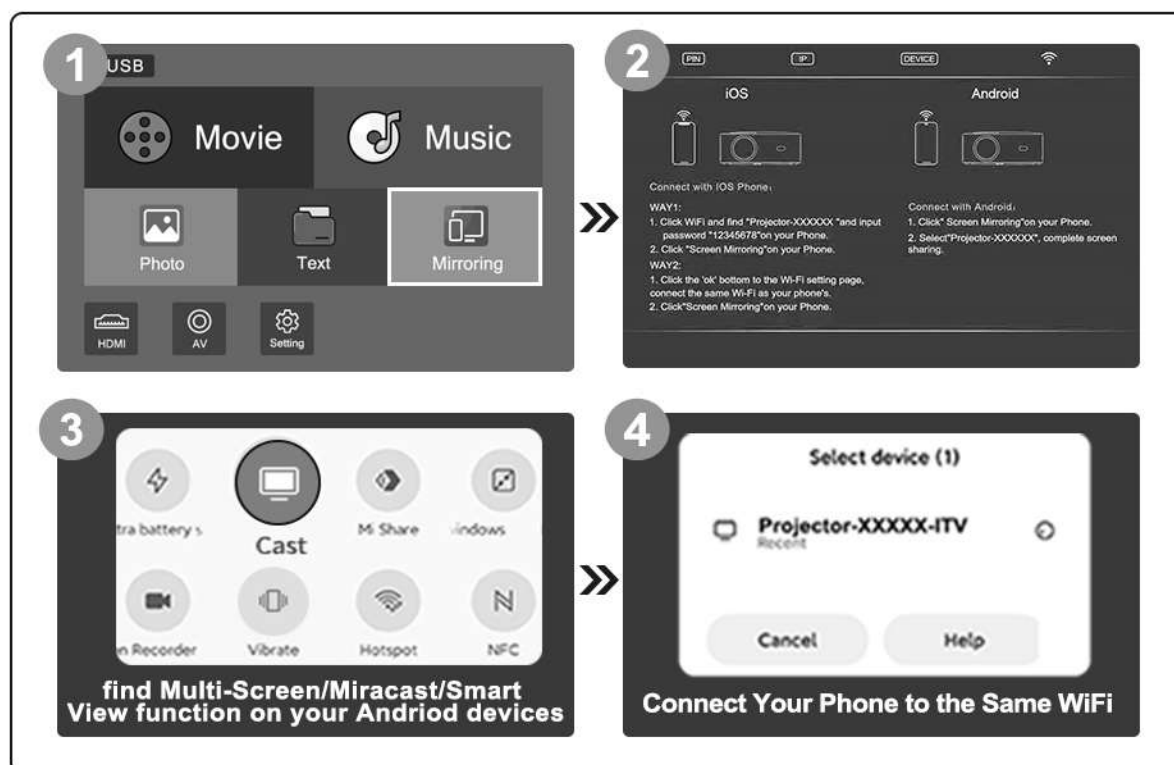
1. USB Connection: Insert your USB device to the USB port, enter the 'Home' page to select the function
2. HDMI Connection: Support most HDMI devices, connect the device to the projector with an HDMI, then enter the 'Home' page select the  icon.
3. WiFi Connection: Connect smartphone and projection via WiFi.

WIFI CONNECTION

iOS Devices Connect




Android Devices Connect



+ iOS phone connection, can use the home's wifi.

1. Press "ok" button to enter the "WiFi" connection page.
2. Select the "WiFi" icon. Find your Home WI-FI, enter the password and connected.
3. Your phone needs to be connected to the same WI-FI as your projector.
4. Make sure the WI-FI is the same, can back to the mirroring page.
5. Open setting find the phone's "Screen Mirroring"  function, find the "Projector-XXXXXX", press to connected.


+ iOS phone connection, can not use the home's wifi.

1. Stay in the phone mirroring page. Select the WLAN  Setting in your phone.
2. Connect the projector's own Wi-Fi "Projector-XXXXXX", Password "12345678" in your phone.
3. After Wi-Fi connected, open phone's "screen mirroring" function, find the "Projector-XXXXXX", press to connected.

+ Android phone connection.

1. Stay in the phone mirroring page.
2. Open the phone's "screen mirroring" function in setting, find the "Projector-XXXXXX", press to connected.

+ iOS & Android phone WiFi Projecting.

1. It's only suitable for the APPs which have the "TV"  icon.
2. Press "ok" button to enter the "WiFi" connection page.
3. Select the "WiFi" icon. Find your Home WI-FI, enter the password and connected.
4. Open your video App in your phone, select the video you like, play and select the "TV"  icon.
5. Selected the projector's name "Projector-XXXXXX", connected.
6. After connected, you can use your phone's other Apps.

Notes: Before connecting by this way, please make sure stop the 'phone mirroring' function, or it would be fail.

SPECIFICATION

Technical	LCD 2.4"
Light Source	LED
Physical Resolution	800*480 p
Color	Full colors (16770K)
Contrast Ratio	2000:1
Aspect Ratio	16:9 / 4:3
Projection Distance	1 - 3 meter (Best 1-1.8 meter)
Transmittance	1.6:1
Projection Size	26" - 180"
Input Ports	USB *1, HDMI*1, AV*1, 3.5 audio*1
Bulb's Lifetime	≥ 60000H
Power	36W
Speaker	4Ω 3W
Unit Dimension	14.8* 9.8* 6 cm
Net Weight	0.4 kg

* All the data for reference only, the newest update please check the website.



POCKET LCD PROJECTOR

FCC Warning Statement

Changes or modifications not expressly approved by the party responsible for compliance could void the user's authority to operate the equipment. This equipment has been tested and found to comply with the limits for a Class B digital device, pursuant to Part 15 of the FCC Rules. These limits are designed to provide reasonable protection against harmful interference in a residential installation. This equipment generates uses and can radiate radio frequency energy and, if not installed and used in accordance with the instructions, may cause harmful interference to radio communications. However, there is no guarantee that interference will not occur in a particular installation. If this equipment does cause harmful interference to radio or television reception, which can be determined by turning the equipment off and on, the user is encouraged to try to correct the interference by one or more of the following measures:

- - Reorient or relocate the receiving antenna.
- - Increase the separation between the equipment and receiver.
- - Connect the equipment into an outlet on a circuit different from that to which the receiver is connected.
- - Consult the dealer or an experienced radio/TV technician for help.

This device complies with part 15 of the FCC Rules. Operation is subject to the following two conditions: (1) This device may not cause harmful interference, and (2) this device must accept any interference received, including interference that may cause undesired operation.

RF Exposure Statement

To maintain compliance with FCC's RF Exposure guidelines, This equipment should be installed and operated with minimum distance of 20cm the radiator your body. This device and its antenna(s) must not be co-located or operation in conjunction with any other antenna or transmitter.