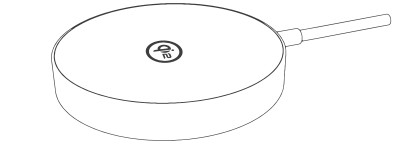


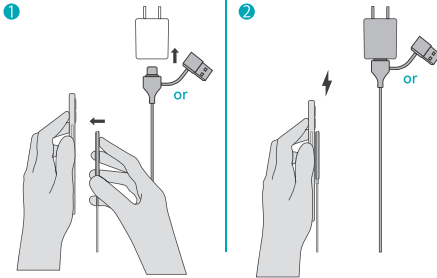
NewQ Qi2 Wireless Charging
Model:NQ-WC-06

Usage Instructions



NewQ Wireless Charging
Instructions

Usage Instructions



Specifications

Product Name	NewQ Qi2 Wireless Charging		
Input	Input port	USB-C	5V/3A, 9V/2.22A
	Input Protocol	BC 1.2, QC 2.0, PD 3.0	
Output	Output port1	Wireless	15W Max (5W, 7.5W, 15W)
	Protocol	BPP, MPP, Apple 7.5W	
Power Allocation	Input		Output
	Adapter < 12W		5W Max
	12W Adapter (5V/2.4A)		7.5W Max
	15W Adapter (5V/3A)		7.5W Max
	18W USBC PD Adapter (5V/3A, 9V/2A)		12W Max
	20W USBC PD Adapter or above(5V/3A, 9V/2.22A)		15W Max

Safety Instructions

- Please read all instructions before use.
- Avoid falling.
- Do not disassemble.
- Do not come into contact with liquids.
- Do not use if damaged or modified.
- Do not throw into the fire or extreme temperatures.

Manufacturer

After-sales Email:
support@newq.store

Website:
www.newq.store

Manufacturer:
ShenZhen Yongdongke Innovation Technology Co.,Ltd.

Address:
3-B03,Building A,Qingchuang City,Zhangkeng Complex,
Minzhi Street,Longhua District,Shenzhen,China

Made in China



FCC Caution:

This device complies with part 15 of the FCC Rules. Operation is subject to the following two conditions:(1) this device may not cause harmful interference, and (2) this device must accept any interference received, including interference that may cause undesired operation.

Any changes or modifications not expressly approved by the party responsible for compliance could void the user's authority to operate the equipment.

NOTE: This equipment has been tested and found to comply with the limits for a Class B digital device, pursuant to Part 15 of the FCC Rules. These limits are designed to provide reasonable protection against harmful interference in a residential installation. This equipment generates, uses and can radiate radio frequency energy and, if not installed and used in accordance with the instructions, may cause harmful interference to radio communications. However, there is no guarantee that interference will not occur in a particular installation.

If this equipment does cause harmful interference to radio or television reception,which can be determined by turning the equipment off and on, the user is encouraged to try to correct the interference by one or more of the following measures:

- Reorient or relocate the receiving antenna.
- Increase the separation between the equipment and receiver.
- Connect the equipment into an outlet on a circuit different from that to which the receiver is connected.
- Consult the dealer or an experienced radio/TV technician for help.

To maintain compliance with FCC's RF Exposure guidelines, This equipment should be installed and operated with minimum distance between 20cm the radiator your body: Use only the supplied antenna.

NQ-WC-06-V1.2

尺寸: 60mm*60mm

装订方式: 折页