

Product specification

2.4GHz Chip Antenna:DFX001

Quick Reference Date

ITEM: Antenna module on the system board

Antenna type: Inverted F shap

Frequenc Range: 2400 ~ 2500MHz

Efficiency (dB) : 70%

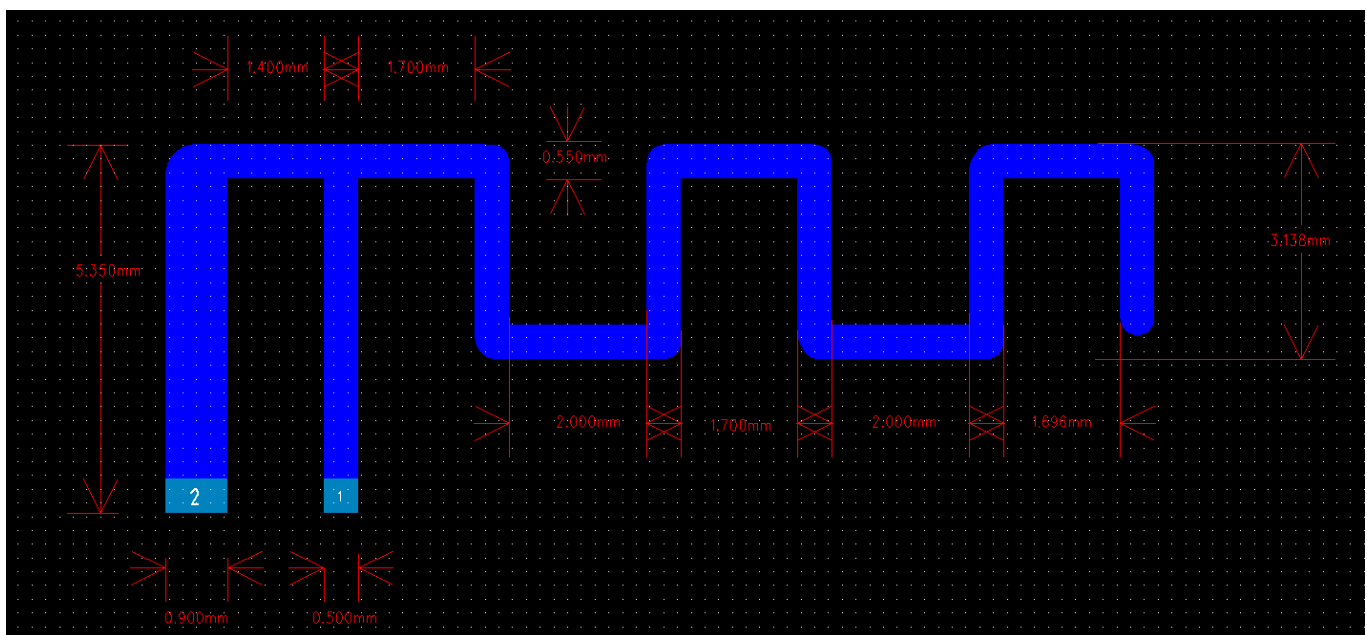
Gain (dBi) : 1.54

Input Impedence(ohm) : 50

Polarization Type : Vertical & Horizontal

VSW : < 2

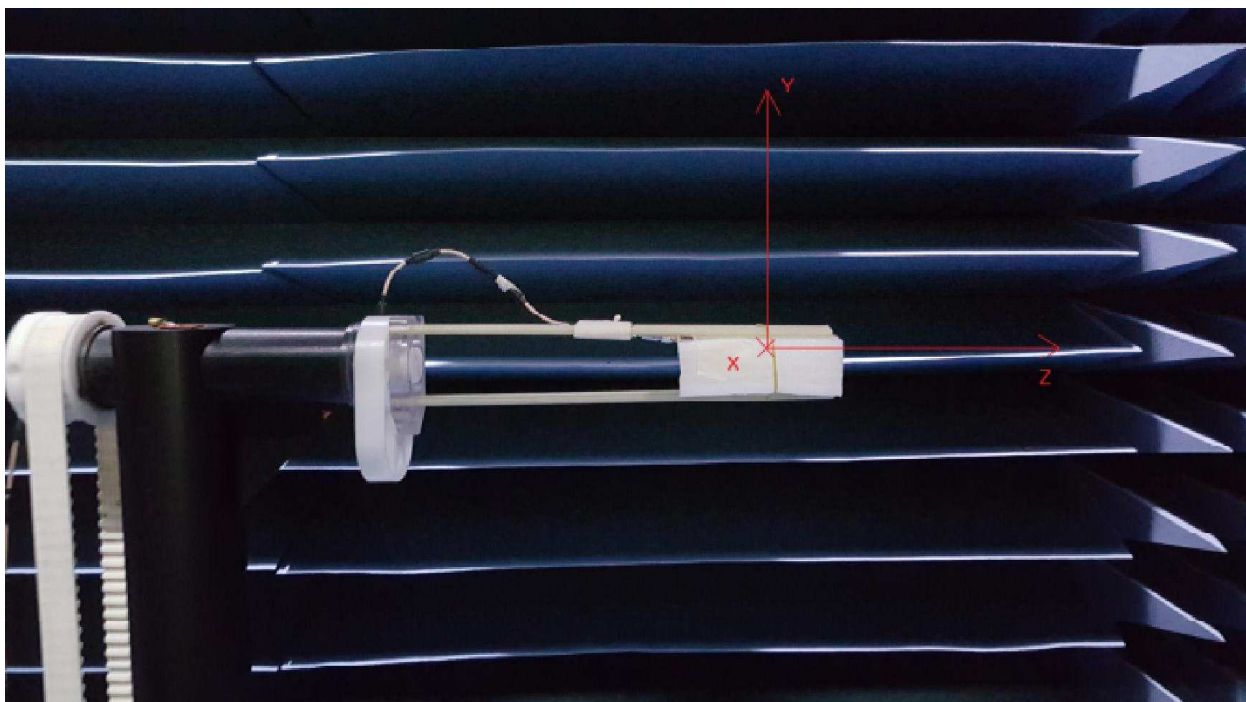
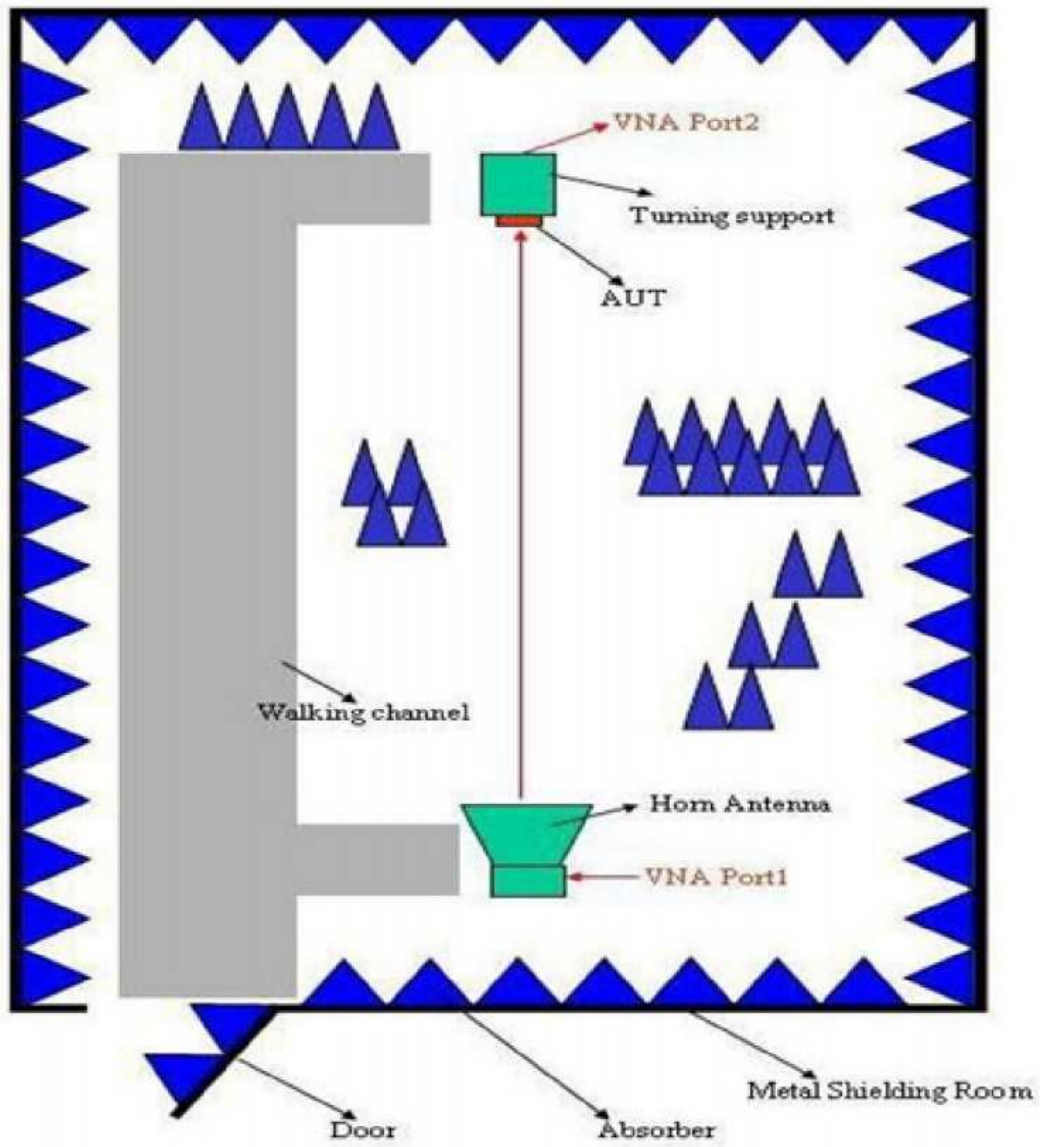
Antenna Layout & module on the system board



Antenna Gain

Frequency (MHz)	Efficiency (dB)	Efficiency (%)	Gain (dBi)
2402	-1.53	70.34	1.31
2405	-1.52	70.51	1.33
2410	-1.49	71.01	1.33
2415	-1.50	70.82	1.32
2420	-1.46	71.47	1.41
2425	-1.45	71.57	1.37
2430	-1.43	71.89	1.39
2435	-1.44	71.70	1.34
2440	-1.40	72.38	1.47
2441	-1.40	72.44	1.51
2445	-1.40	72.42	1.44
2450	-1.41	72.27	1.50
2455	-1.45	71.60	1.53
2460	-1.44	71.82	1.51
2465	-1.50	70.76	1.54
2470	-1.56	69.76	1.48
2475	-1.59	69.35	1.46
2480	-1.67	68.13	1.47

The Environment of Antenna Radiation Pattern



3D radiation pattern diagram

