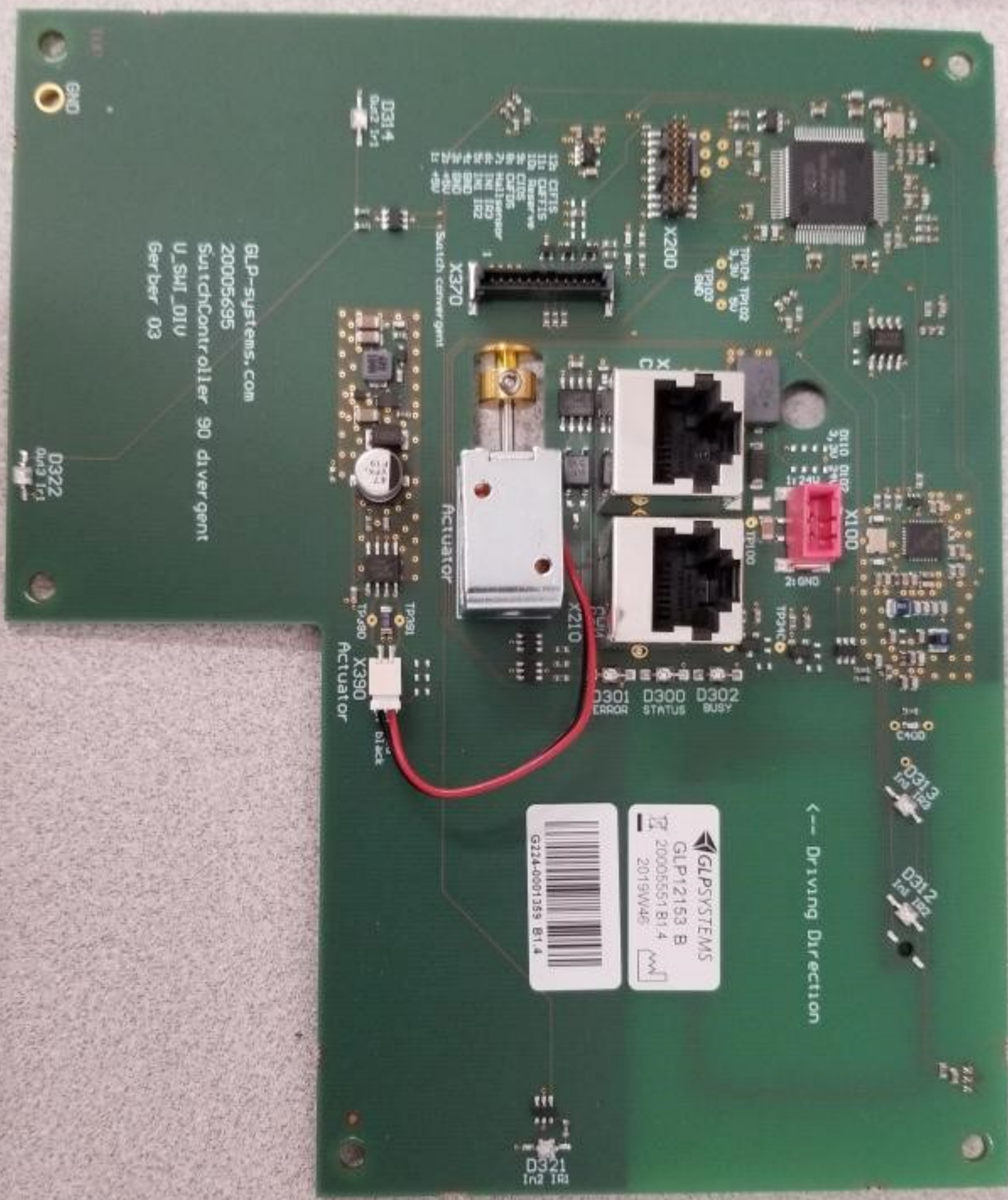


16	1/16	16	1/2	17	3/16	17	7/8	18	1/2	19	1/4	0	0
24	3/16	25	5/16	26	1/16	26	13/16	27	13/16	28	7/8	9	3/8
11	13/16	11	5/8	11	3/8	11	5/8	10	3/4	10	3/4	10	3/8
11	15/16	11	11/16	11	1/2	11	5/16	11	1/16	10	7/8	0	5/8





GLP-systems.com
20005695
SwitchController 90 divergent
U_SMI_01U
Gerber 03

GLP SYSTEMS
GLP12153 B
20005551 81.4
2019W46



← Driving Direction

D322
04x3 1r1

X390
Actuator
Direct

Actuator

X370
Switch convergent

D301 D300 D302
ERROR STATUS BUSY

D321
1r2 TR1

D313
1r1 TR1

D312
1r1 TR1

X200

X100

X210

X

C

04x3 1r1
GND

D314
04x2 1r1

12x CPTIS
11x CPTIS
10x Resistor
8x CPTIS
8x CAPTOR
7x Multi-resistor
4x TR1 TR2
2x TR1 TR2
2x GND
2x +5V

TP102
TP103
5.0u
5u
BNO

D10 04x2
3.3u
24V

TP100
GND 12

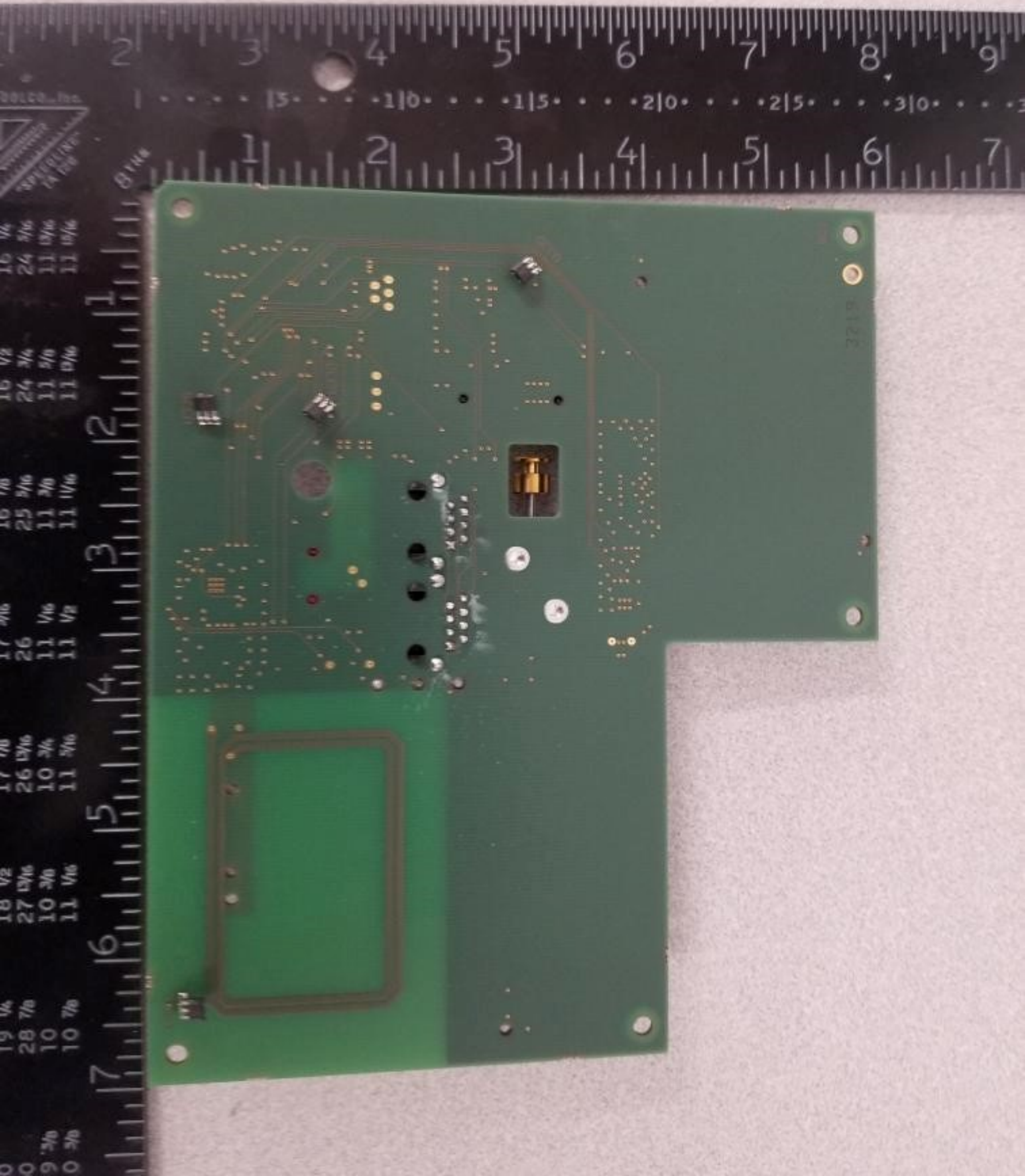
TP24C
TP24C

C400

D312

D313

1r1
1r1
TR1



1	2	3	4	5	6	7
0	9	10	10	10	10	10
1	9	10	10	10	10	10
2	10	10	10	10	10	10
3	10	10	10	10	10	10
4	10	10	10	10	10	10
5	10	10	10	10	10	10
6	10	10	10	10	10	10
7	10	10	10	10	10	10
8	10	10	10	10	10	10
9	10	10	10	10	10	10
10	10	10	10	10	10	10
11	10	10	10	10	10	10
12	10	10	10	10	10	10
13	10	10	10	10	10	10
14	10	10	10	10	10	10
15	10	10	10	10	10	10
16	10	10	10	10	10	10
17	10	10	10	10	10	10
18	10	10	10	10	10	10
19	10	10	10	10	10	10
20	10	10	10	10	10	10
21	10	10	10	10	10	10
22	10	10	10	10	10	10
23	10	10	10	10	10	10
24	10	10	10	10	10	10
25	10	10	10	10	10	10
26	10	10	10	10	10	10
27	10	10	10	10	10	10
28	10	10	10	10	10	10
29	10	10	10	10	10	10
30	10	10	10	10	10	10
31	10	10	10	10	10	10
32	10	10	10	10	10	10
33	10	10	10	10	10	10
34	10	10	10	10	10	10
35	10	10	10	10	10	10
36	10	10	10	10	10	10
37	10	10	10	10	10	10
38	10	10	10	10	10	10
39	10	10	10	10	10	10
40	10	10	10	10	10	10
41	10	10	10	10	10	10
42	10	10	10	10	10	10
43	10	10	10	10	10	10
44	10	10	10	10	10	10
45	10	10	10	10	10	10
46	10	10	10	10	10	10
47	10	10	10	10	10	10
48	10	10	10	10	10	10
49	10	10	10	10	10	10
50	10	10	10	10	10	10



GLPSYSTEMS
GLP12154-A
20005591 B1.2
2019W44
0232-0001345-B1.2

← Driving Direction

Driving Direction -->

GLP-systems.com
20007260 A1.1
SwitchController 90 convergent
U_SMI_CON

- 12: C105
- 11: C105
- 10: Reserve
- 9: C105
- 8: C105
- 7: HallSensor
- 6: IN1 IQ3
- 5: IN1 IQ2
- 4: GND
- 3: GND
- 2: +5V
- 1: +5V

X370
Switch divergent
Switch convergent - 10

X200
TP102 TP103

X210
CAN

X211
CAN

D322
Out2 IR1

D314
Out1 IR1

D321
In3 IR1

D313
In2 IQ3

D312
In2 IQ2

D301 ERROR
D300 STATUS
D302 BUSY

2019 W44
0232-0001345-B1.2

100%