

天津市东丽区方正测量工具制作中心 cm

X370
NEXT
CONTROLLER
1: 5V_{in}
2: GND_{in}
3: CONNECTED
4: IN
5: RXD
6: TXD

X380
PREVIOUS
CONTROLLER
1: 5V
2: GND
3: GND
4: OUT
5: TXD
6: RXD

X100
POWER

ACTUATOR

X630
ACTUATOR

X210

X211

G412-0001203
Rev. -

GLPSYSTEMS
GLP41277 A
20009773 A1.1
2020W51

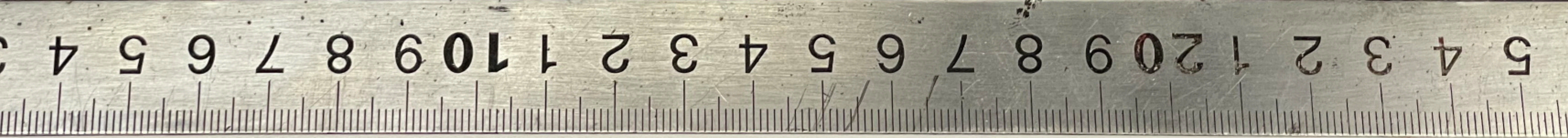
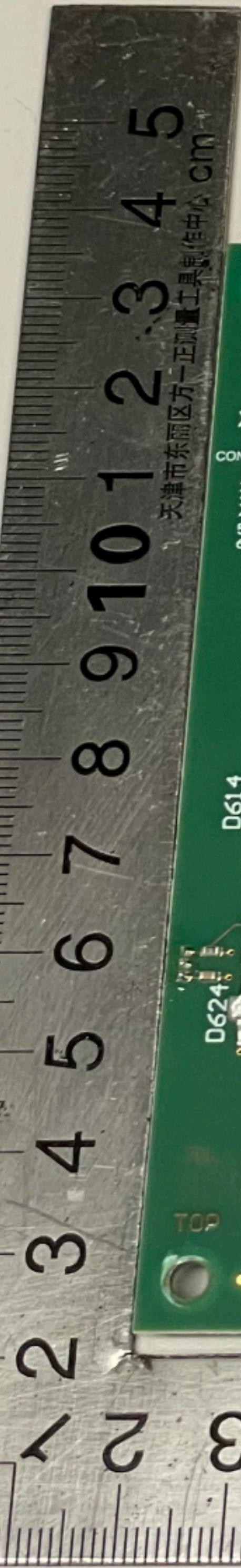
GLP-systems.com
20009624
SwitchController roundabout
U_SWI_ROUND
Gerber 03

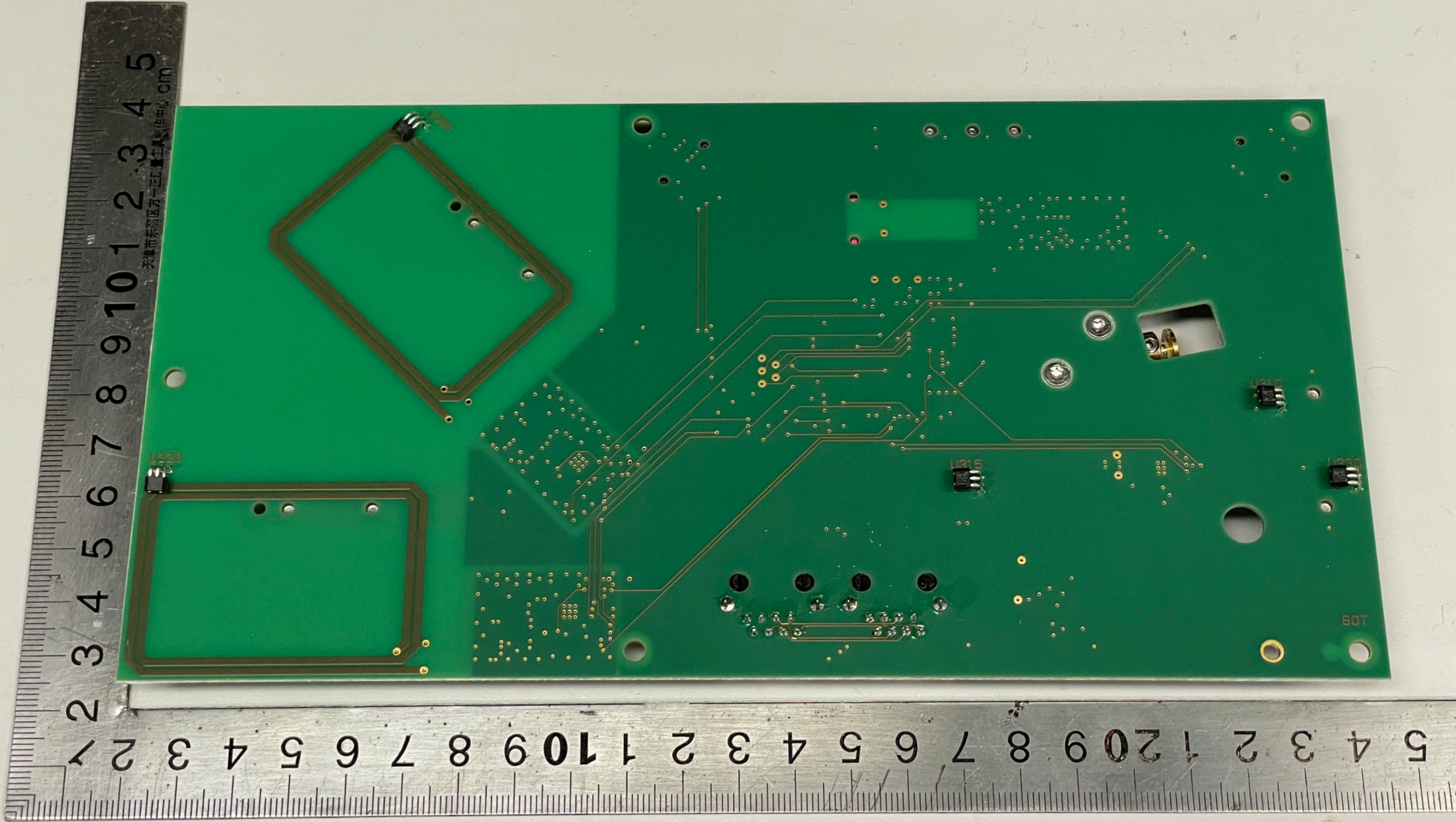
← Driving Direction

← Driving Direction

TOP

GND





天津市东丽区第一应用计量中心 CM

BOT

天津市东丽区方正仪器工具制作中心 CM

X370
NEXT
CONTROLLER
1: SUI n
2: GND i n
3: CONNECTED
4: I N
5: RXD
6: TXD

D602 D600 D601
BUSY STATUS ERROR

X380
PREVIOUS
CONTROLLER
1: SUI
2: GND
3: GND
4: OUT
5: TXD
6: RXD

X100
POWER

ACTUATOR

X630
ACTUATOR

X200

← Driving Direction

← Driving Direction

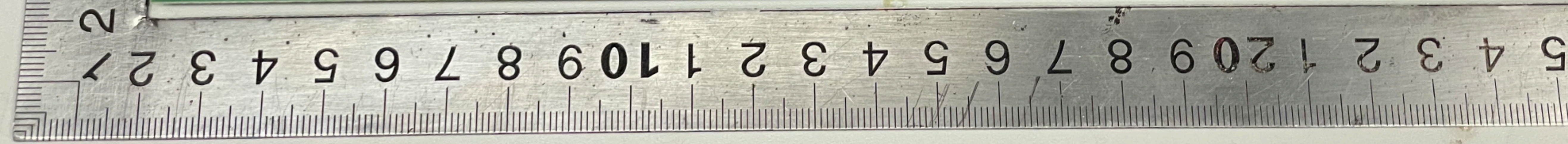
G412-001203 Rev -

GLPSYSTEMS
GLP41277 A
20009773 A1.1
2020W51

GLP-systems.com
20009624
SwitchController roundabout
U_SWI_ROUND
Gerber 03

GND

TOP



天津市东丽区第一印刷厂印刷

