

1	12 17	17 09	16 1/4	24 3/8	11 13/16	11 15/16
2	12 37	17 23	16 1/2	24 3/4	11 5/8	11 13/16
3	12 65	17 44	16 7/8	25 5/16	11 3/8	11 11/16
4	13	17 69	17 5/8	26	11 1/4	11 1/2
5	13 42	18	17 7/8	26 13/16	10 3/4	11 5/16
6	13 89	18 36	18 1/2	27 13/16	10 3/8	11 1/16
7	14 42	18 76	19 1/4	28 7/8	10	10 7/8
8	15	19 21	20	30	9 5/8	10 5/8
9	15 62	19 70	20 13/16	31 1/4	9 3/16	10 5/16
10	15 62	19 70	20 13/16	31 1/4	9 3/16	10 5/16

D612 In1 IR2

D613 In1 IR3

←-- Driving Direction

REF 06R20-01 (12152 D)
 (11) 211021
 (240) 06R20-01
 Abbott

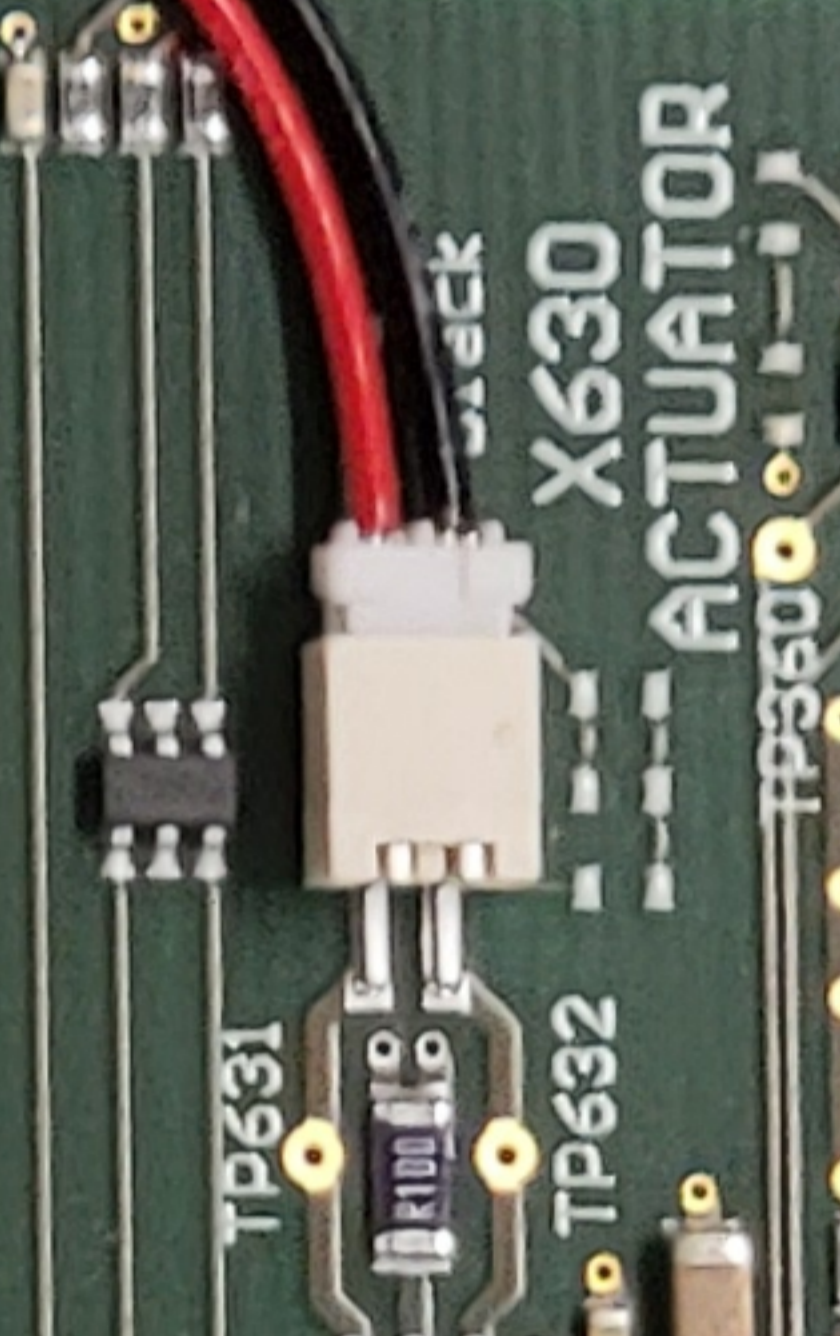
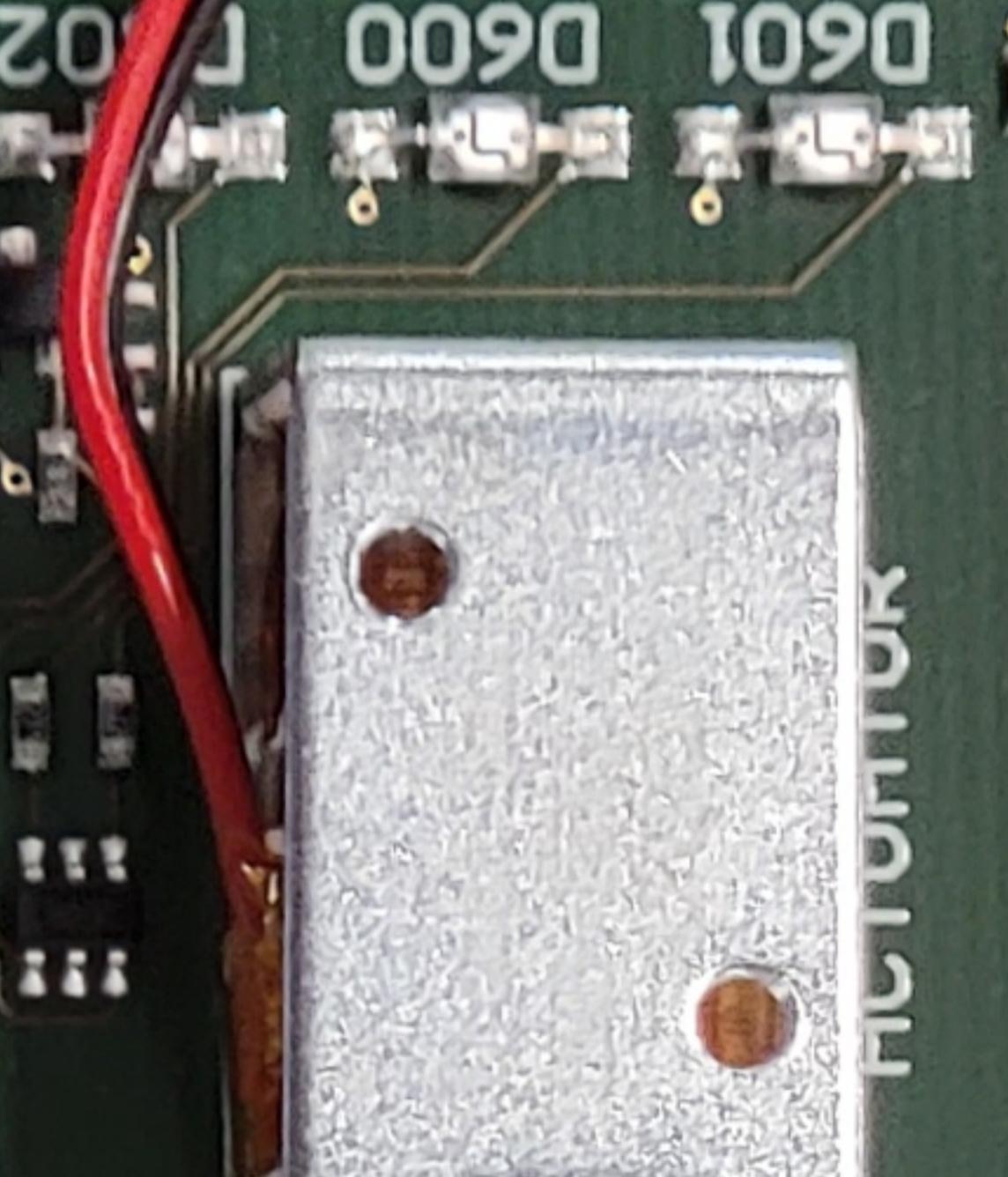
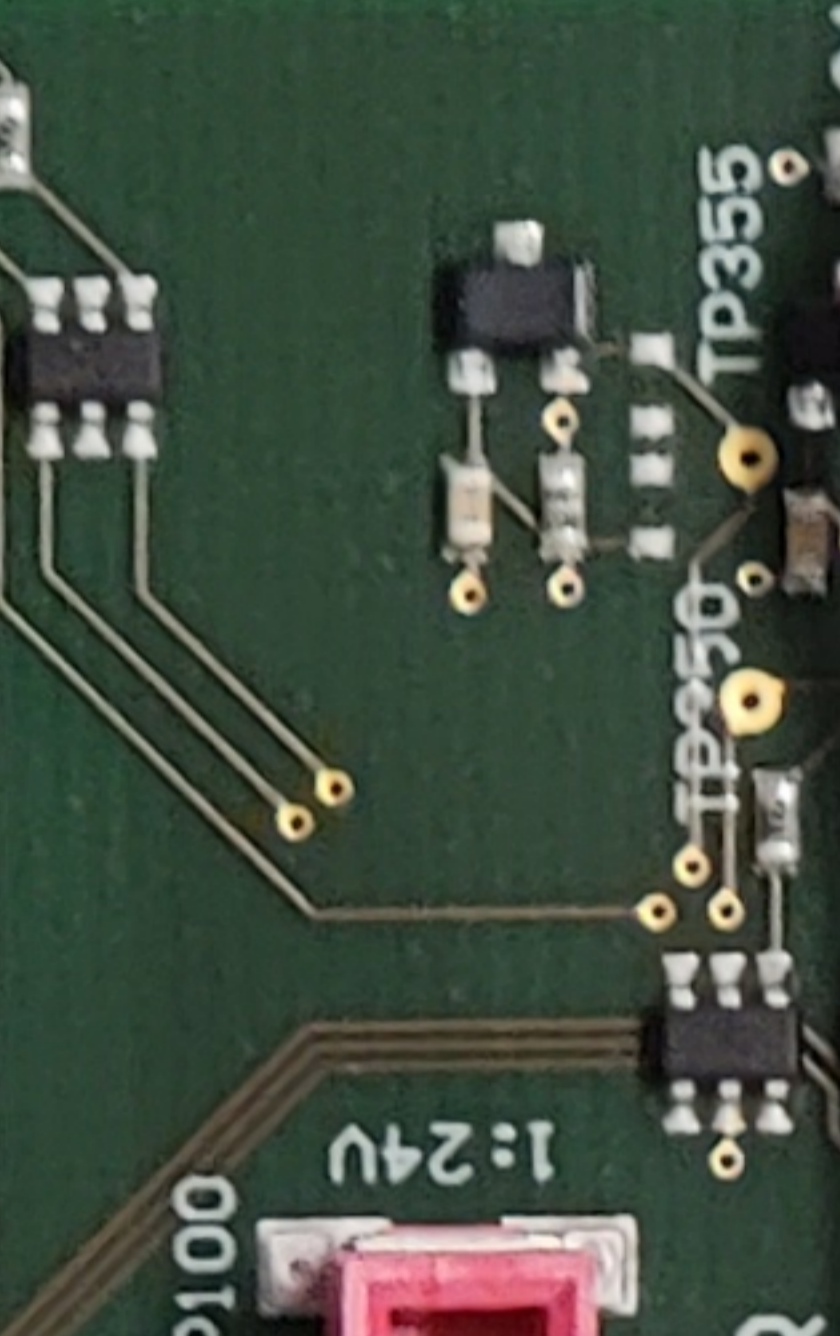
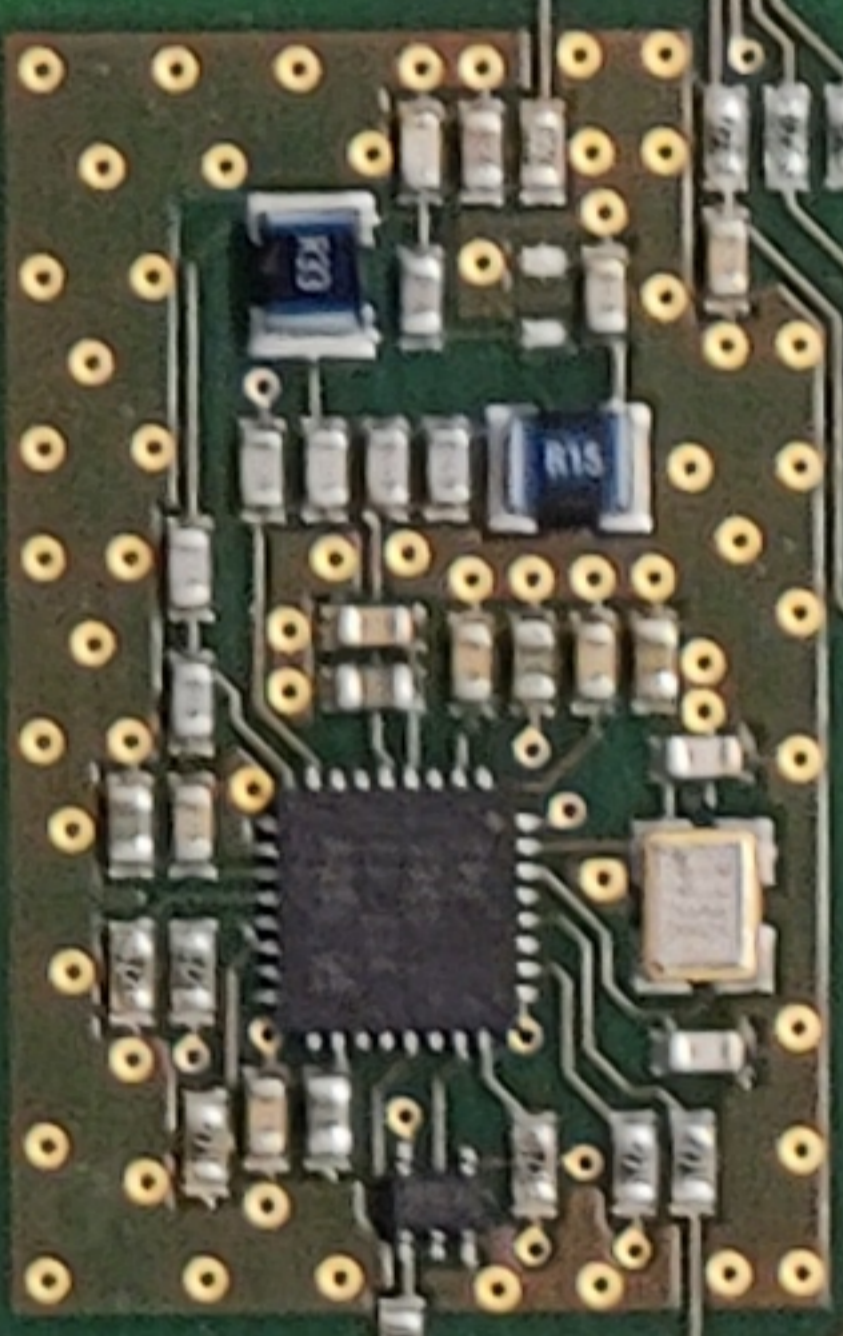
G243-0015746
 Rev. D

D622 In2 IR2

D623 In2 IR3

GLP-systems.com
 20005732 A1.1
 SwitchController crossover
 U_SWI_CROSS

20005732
 202142
 Rev. A1.1



TP101 TP100
 X100 POWER
 1: 24V
 2: GND

ACTUATOR
 X630 ACTUATOR
 TP631 TP632 TP635

152V
 47 VFK. F00
 6F8 2104

ACTUATOR
 X630 ACTUATOR
 TP631 TP632 TP635

TP102 TP103 TP104

ACTUATOR
 X630 ACTUATOR
 TP631 TP632 TP635

D110 3.3V D102 24V

ACTUATOR
 X630 ACTUATOR
 TP631 TP632 TP635

TP101 TP100

ACTUATOR
 X630 ACTUATOR
 TP631 TP632 TP635

TP102 TP103 TP104

ACTUATOR
 X630 ACTUATOR
 TP631 TP632 TP635

D110 3.3V D102 24V

ACTUATOR
 X630 ACTUATOR
 TP631 TP632 TP635

TP101 TP100

ACTUATOR
 X630 ACTUATOR
 TP631 TP632 TP635

TP102 TP103 TP104

ACTUATOR
 X630 ACTUATOR
 TP631 TP632 TP635

D110 3.3V D102 24V

ACTUATOR
 X630 ACTUATOR
 TP631 TP632 TP635



GND

TOP

D614 Out1 IRI

D624 Out2 IRI

D601 ERROR STATUS
 D600

ACTUATOR
 X630 ACTUATOR
 TP631 TP632 TP635

