

# Antenna Test Report

For

Project BP69RC

Version:

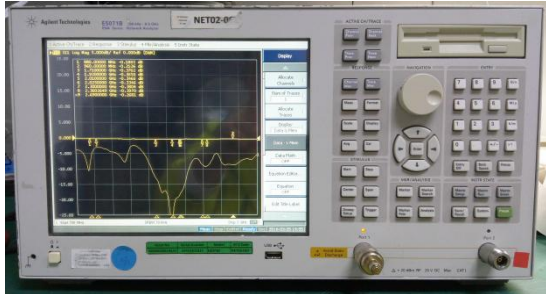
<b>Customer</b>	<b>联雅</b>	<b>Project</b>	<b>BP69RC</b>
<b>Band</b>	<b>BT</b>	<b>Color</b>	
<b>Issued by</b>	<b>LH</b>	<b>Checked by</b>	
<b>Confirmed by</b>		<b>Date</b>	<b>2024.03.22</b>

This test report belongs to ShenZhen NQI network communication ltd. and related clients to file, please keeping it propely, without our company and related clients allowed, anybody has no rights to reval it to public.

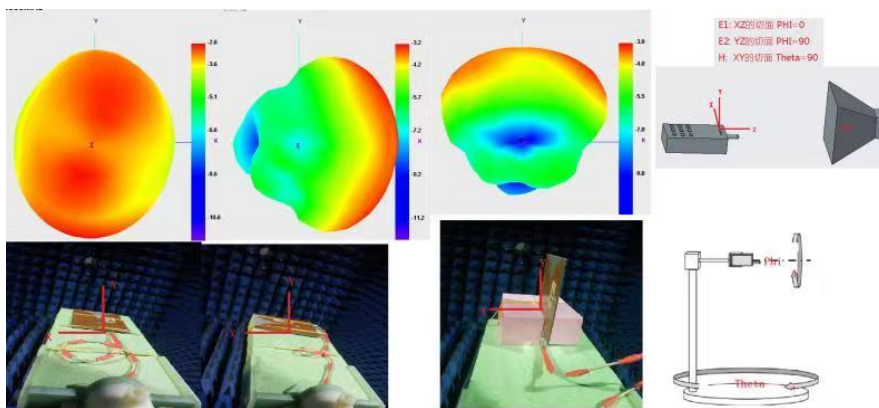


一. Test Instrumentation and item(测试设备及项目)

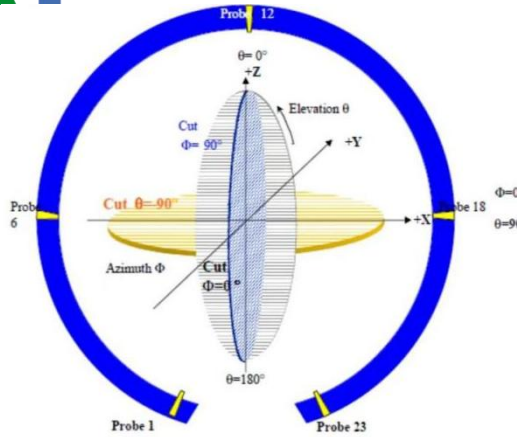
类别 (Class)	测试项目 (Test item)	设备 (Equipment)
1. S parameter	1. 回波损耗(RL) 2. 驻波比 (VSWR) 3.史密斯原图(Smith chart)	网分 (VNA) : Agilent E5071B  R&S ZVB8  Protek A333
2. 耦合测试 (Coupling testing)	1. 发射功率 (MAX Power) 2. 接收灵敏度 (MIN Sens)	1.2G/3G Tester: Agilent 8960 2.The coupling box: TESCOM TC-5060A 3. 3D Chamber: ETS 3D Chamber (5x3x3)
3. 3D 无源测试 (Passive Test)	1. 效率 (Effeciency) 2. 增益 (Gain) 3.辐射方向图 (radiation pattern)	1. 3D Chamber: TEM24 3D Chamber(5x5x5)  ETS 3D Chamber (5x3x3) 2. 网分 (VNA) : Agilent E5071B  R&S ZVB8
4.3D 有源测试 (Active Test)	1. 3D 功率 (TRP) 2. 3D 灵敏度 (TIS) 3.吞吐率 (Throughput rate)	1. 3D Chamber: TEM24 3D Chamber(5x5x5)  ETS 3D Chamber (5x3x3) 2.2G/3G Tester: Agilent 8960 3.4G Tester: MT8820C/CMW500 4.WIFI/BT/NB-iot Tester: CMW500 5. 5G Tester: SP9500-CTS 6.Head: HEAD-P10 (FACE-P10)



## 二. Chamber coordinate axis (暗室坐标)



This test report belongs to ShenZhen NQI network communication ltd. and related clients to file, please keeping it propely, without our company and related clients allowed, anybody has no rights to revel it to public.



### 三. Definitions (定义)

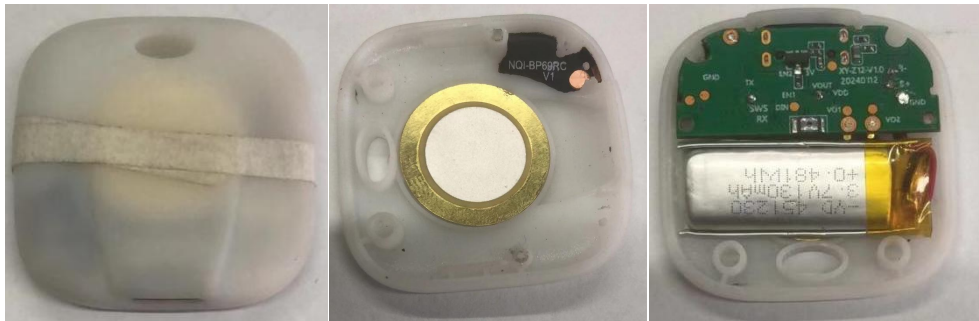
VSWR: Voltage Standing Wave Rate

RL: Return loss

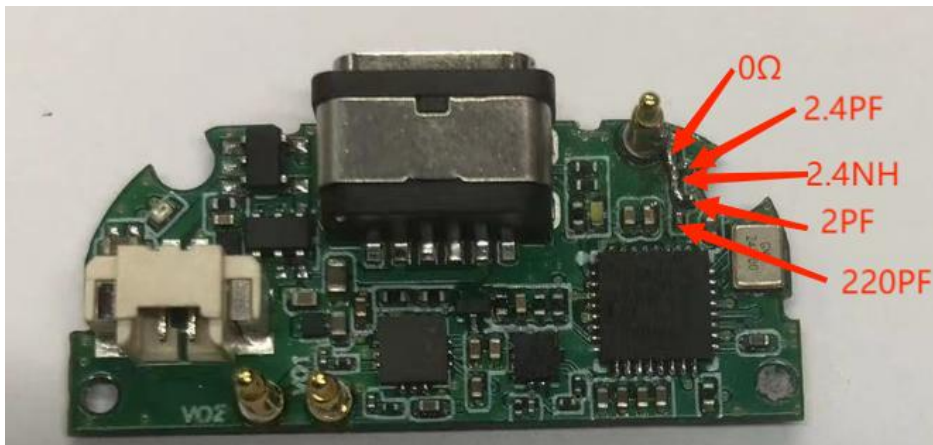
TRP: total radiated power

TIS: total isotropic sensitivity

### 四. Cell-Phone Photo and Dealing Method (手机图片及环境处理)



### 五. Matching Circuit Description (匹配描述)

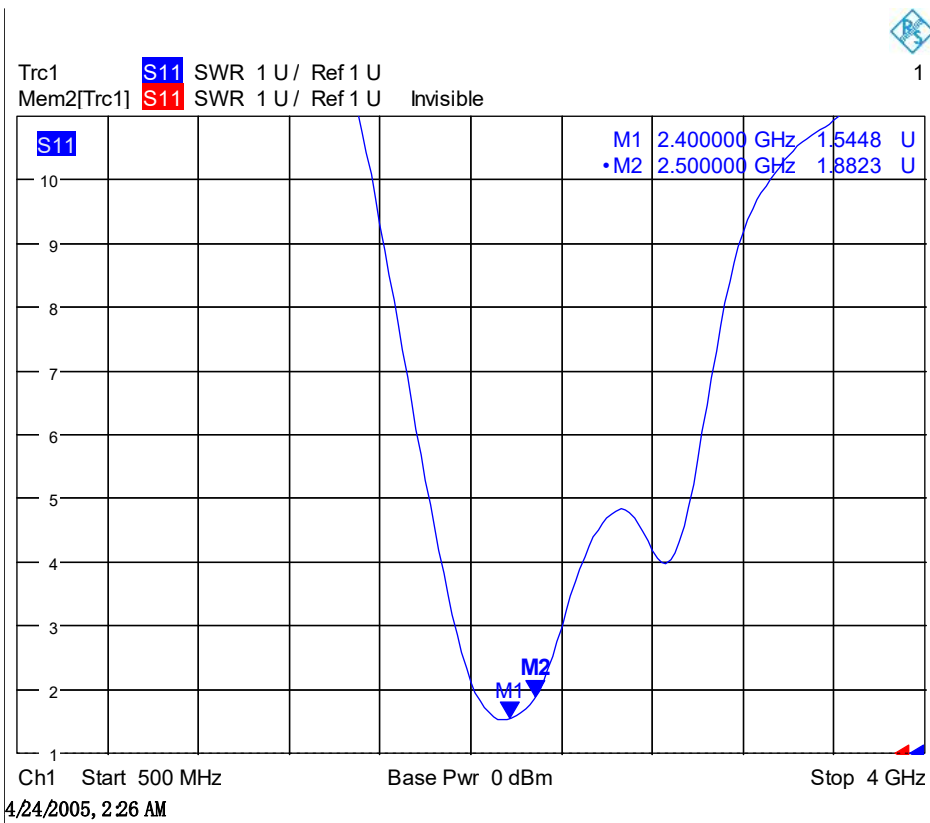
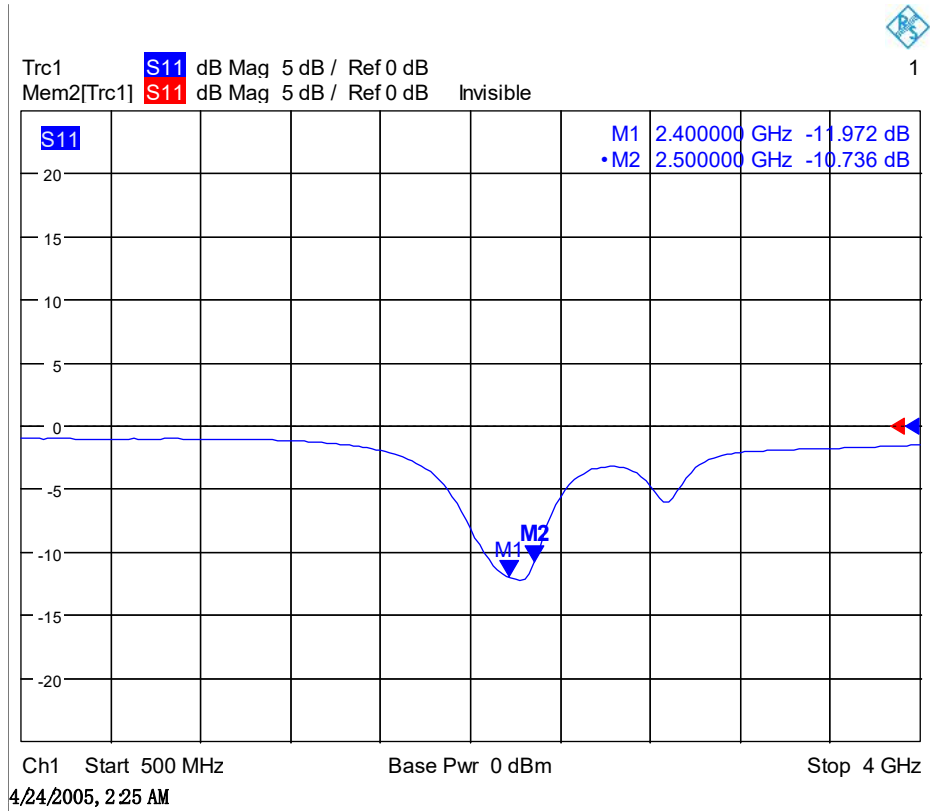


This test report belongs to ShenZhen NQI network communication ltd. and related clients to file, please keeping it propely, without our company and related clients allowed, anybody has no rights to revel it to public.



## 六. Passive Test (无源测试)

### 6.1. RL/VSWR (回波损耗/驻波比)



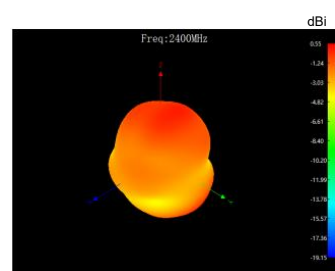
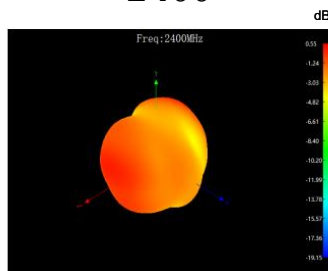
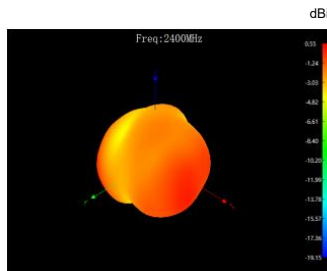
This test report belongs to ShenZhen NQI network communication ltd. and related clients to file, please keeping it propely, without our company and related clients allowed, anybody has no rights to revel it to public.



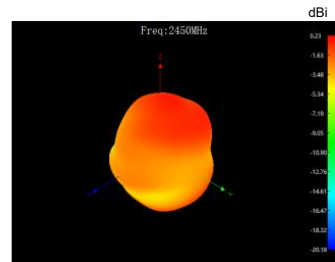
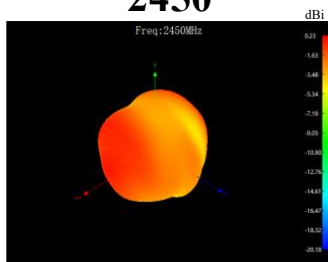
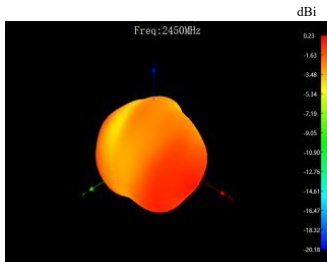
## 6.2.Efficiency、Gain、 Radiation pattern

Freq (MHz)	Effi (%)	Gain (dBi)
2400	39.81	0.55
2410	37.33	0.27
2420	38.64	0.5
2430	38.19	0.39
2440	39.36	0.25
2450	38.02	0.23
2460	37.76	-0.02
2470	37.33	0.29
2480	36.8	0.03
2490	36.4	0.5
2500	36.73	0.1

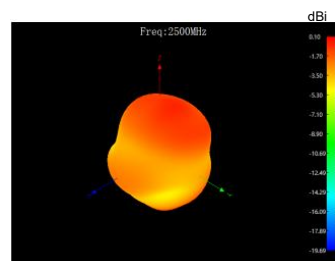
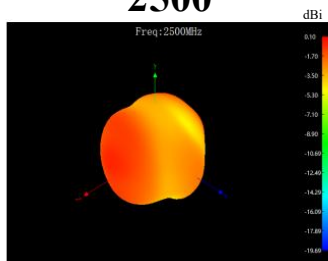
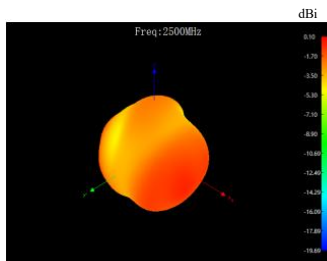
### 2400



### 2450



### 2500



This test report belongs to ShenZhen NQI network communication ltd. and related clients to file, please keeping it propely, without our company and related clients allowed, anybody has no rights to revel it to public.

## 七. Field testing (场测或实测)

field test result (场测结果)	
Test site (测试场地): Vacant lot outside the company gate (国质信门口空地)	
Cell-phone (测试手机): 苹果 8plus	
The tesser (测试员): LH	
Height of mobile phone stand (手机支架高度): 1.2m	
测试结果	
	Actual test distance (实测测试距离)
1 天线匹配串联 220PF	78m
备注:	

