

P/N:Skim

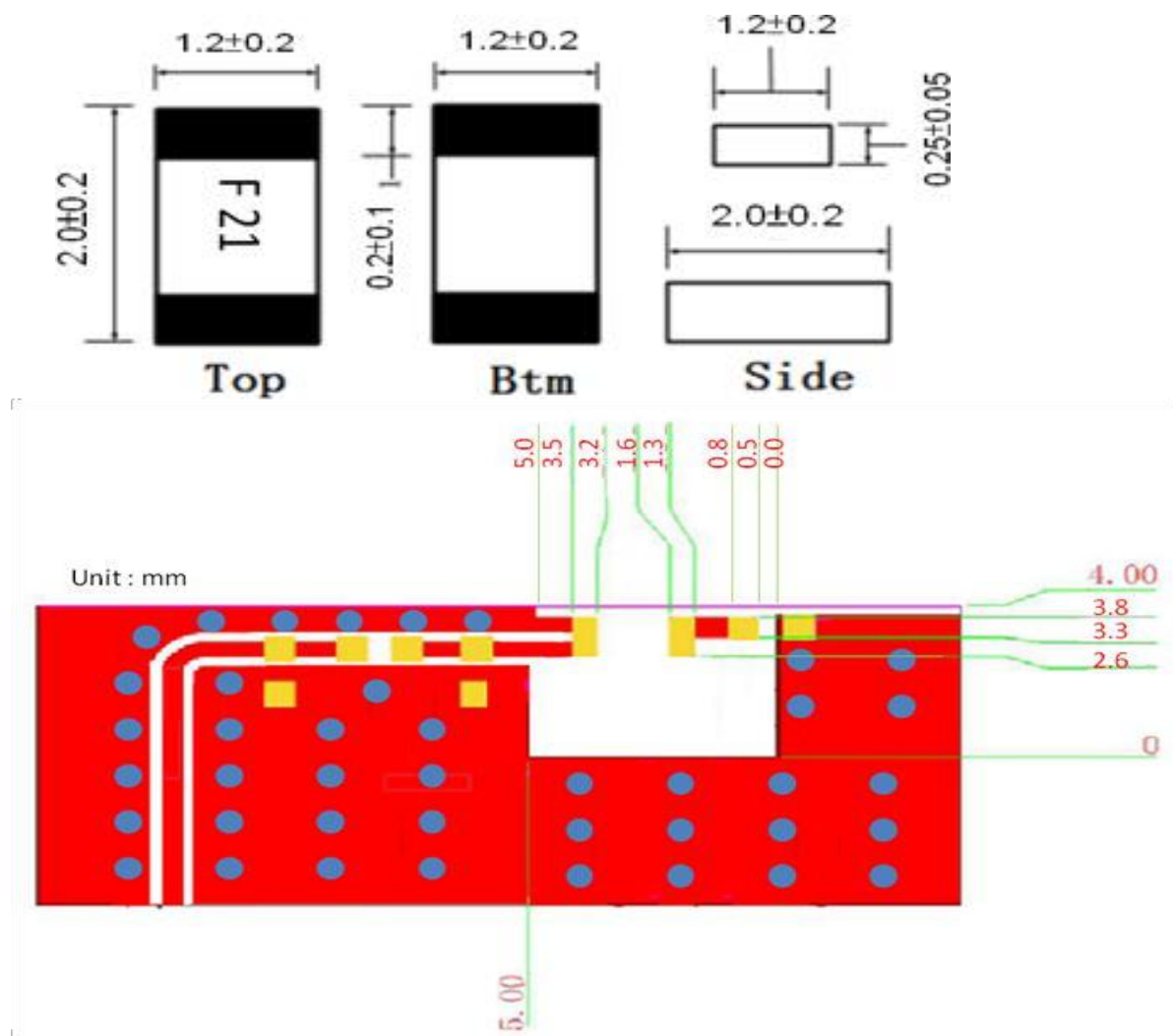
Features

1. Surface Mounted Devices with a small dimension of 2.0 x 1.25 x 0.25 mm³ meet future miniaturization trend.
2. Embedded and LTCC (Low Temperature Co-fired Ceramic) technology is able to future integrate with system design as well as beautifying the housing of final product.
3. High Stability in Temperature / Humidity Change

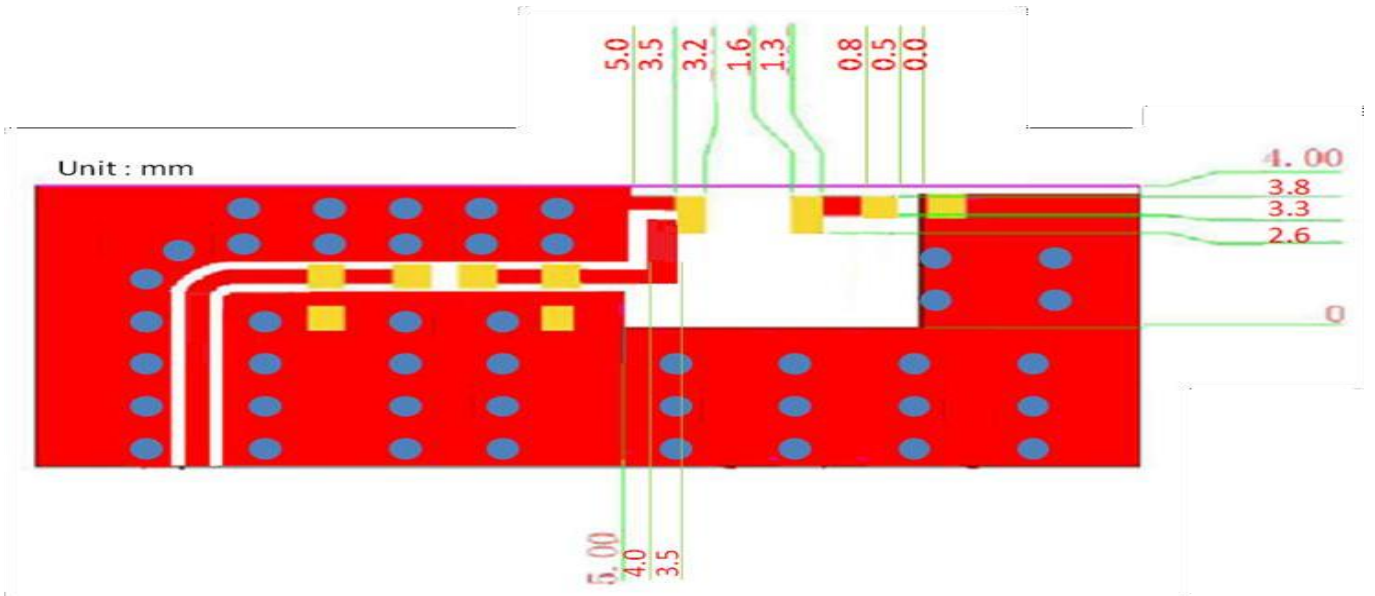
Applications

1. Bluetooth
2. Wireless LAN
3. HornRF
4. ISM band 2.4GHz wireless applications

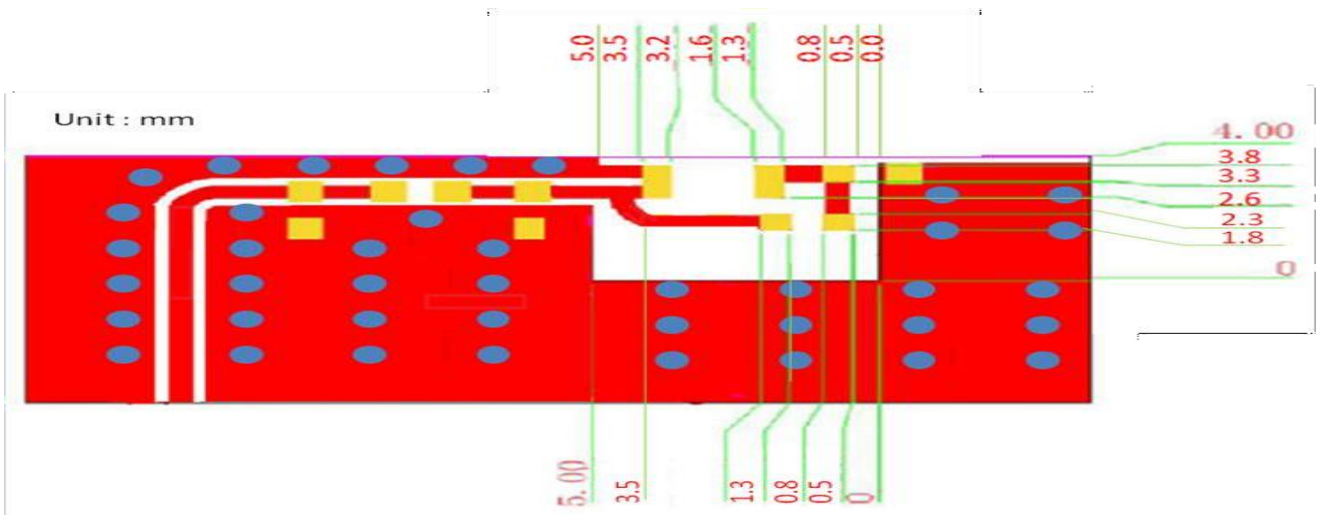
Dimensions (Unit: mm)



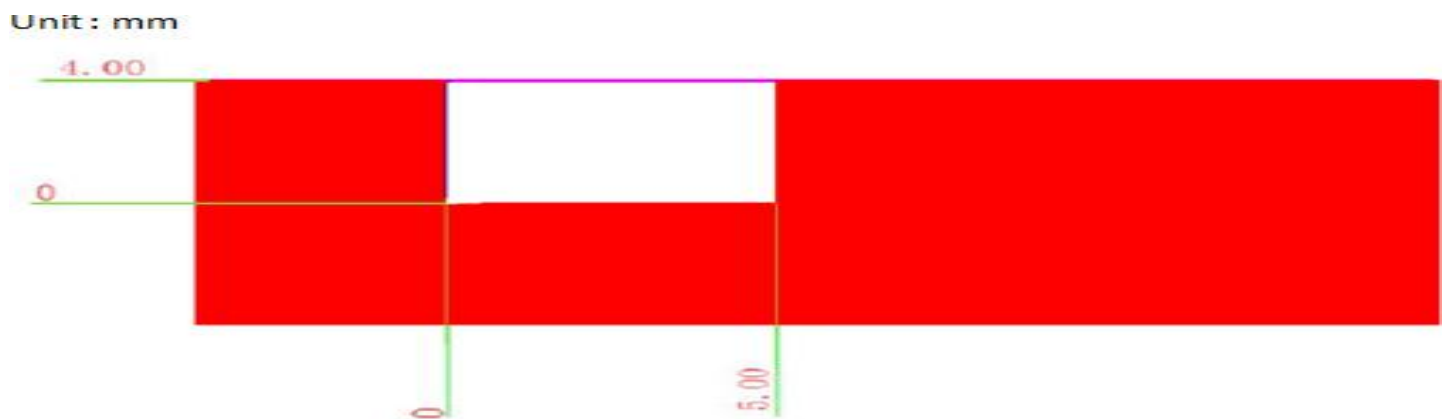
Type2 :



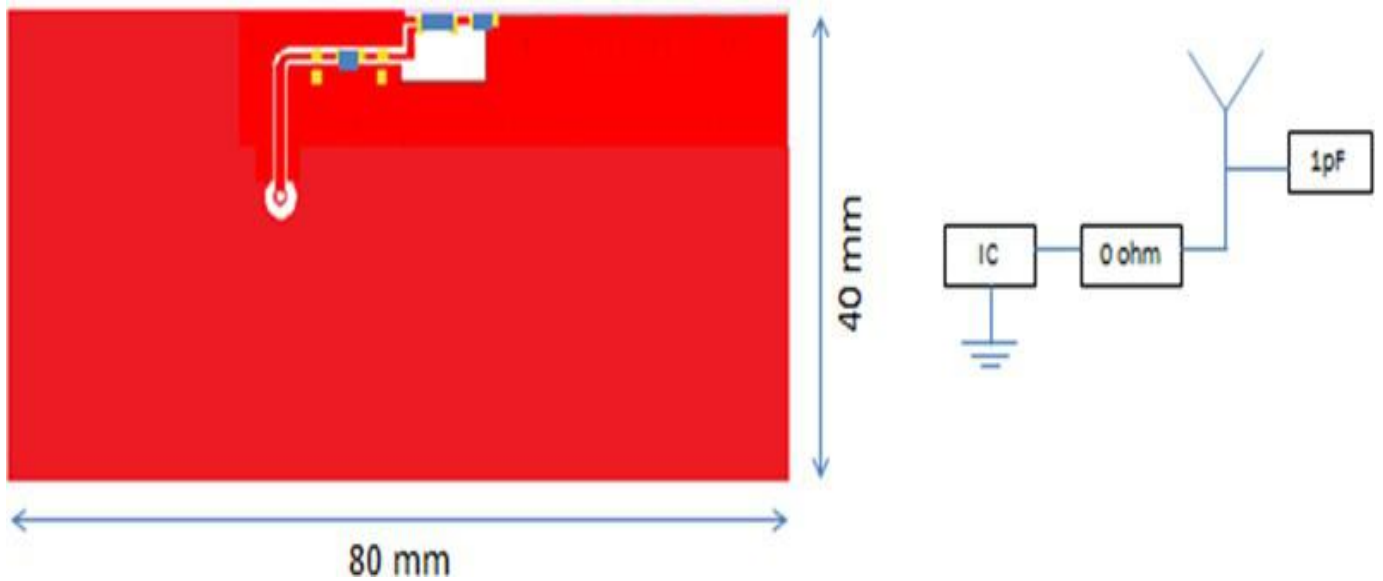
Type3 :



PCB Bottom View :



Evaluation Board and Matching Circuits



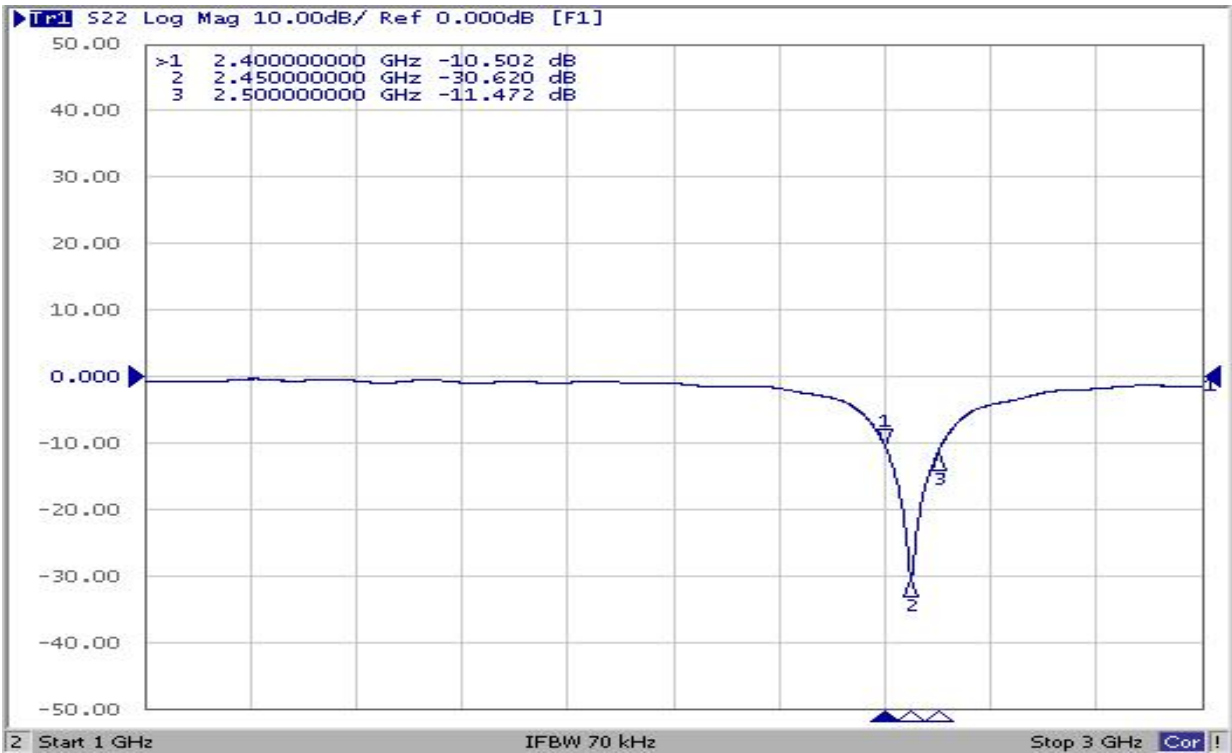
Electrical Characteristics

No.	Item	Specifications
5.1	Working Central Frequency (After matching)	2450 MHz
5.2	Band Width	86MHz typ.
5.3	Peak Gain	-0.58 dBi
5.4	R.L.	≥ 7
5.5	Polarization	Linear
5.6	Azimuth Beam width	Omni-directional
5.7	Impedance	50 Ω

www.surbaner.com.cn

SUR Communication has possession of proprietary information provided in this report and this proprietary information shall be kept in strict confidence and not disclosed to any person or firm without the prior written consent of SUR Communication Technology.

Characteristic curve



Radiation Pattern

Frequency(MHz)	2400	2450	2500
Efficiency (dB)	-2.82	-2.04	-2.41
Efficiency (%)	52.19	62.42	58,21
Gain (dBi)	-0.58	-0.67	-0.63

