

# BOOMPDS® soundwave

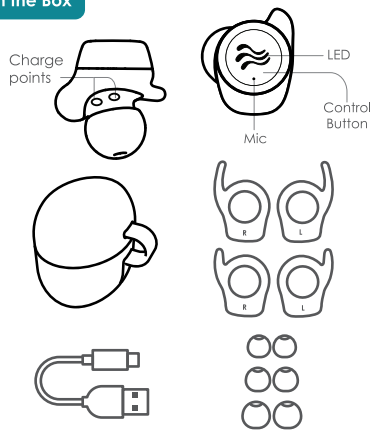
The sustainably made true wireless earbuds

But how is this possible? I mean, this was plastic waste!

Yes, But when it comes to the most common used materials we're collecting, for instance PET bottles, this waste already had food grade during its first lifecycle. After collecting it, our local teams are washing and sorting the plastic which is then shredded into flakes. After this step, the innovative technology we have developed with the Swiss University of Applied Sciences OST, takes over: We transform these flakes into pellets in a pure mechanical process, neither chemicals nor virgin plastics are being added. We use the latest technology and apply physical methods (vacuum, decompression, degassing, melting) to transform waste and extend the molecular chains of these wasted polymers. The result is a strong, clean and reliable material.

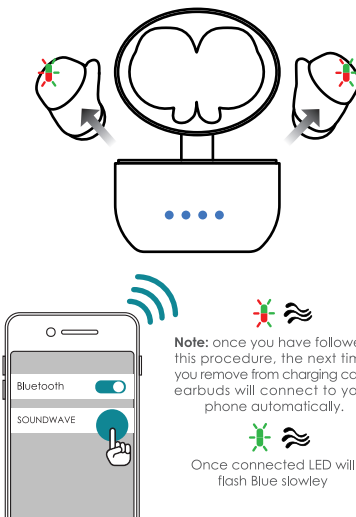


## In the Box

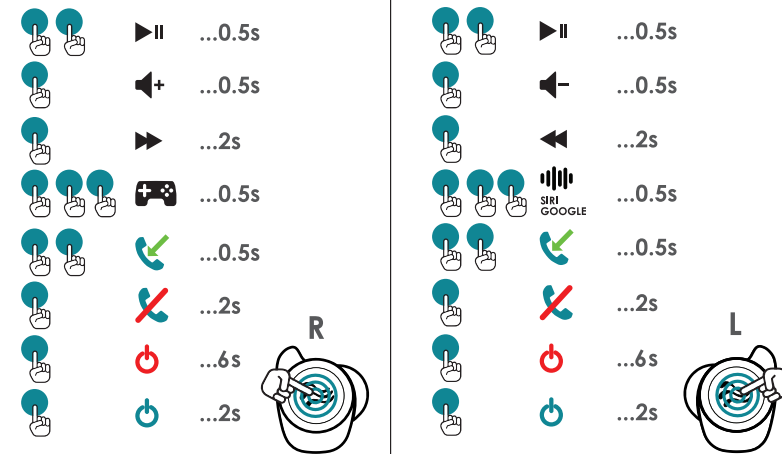


The recycled ocean plastic used to make this product may have traces of the wide mix of types of plastics collected, this can allow some minor black spots and imperfections to appear upon the surface. These are normal and do not affect the performance of the product. The material is unique in character and happy not to be in the Sea.

## How to Connect

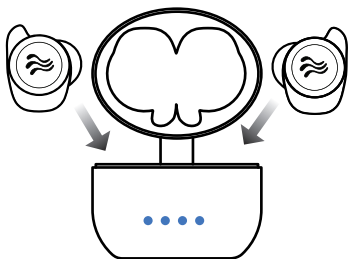


## Touch Controls



Your earbuds come pre-set as below but you can customise to how you want through the boomPods APP  
If not connected earbuds will power down after 5 mins

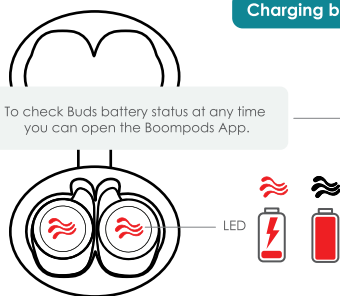
## Charging



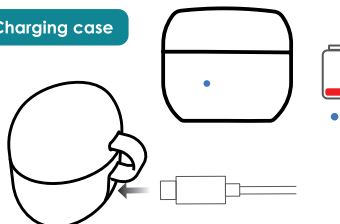
LED

- Case needs charging
- Case is charging
- Case fully charged

## Charging buds



## Charging case

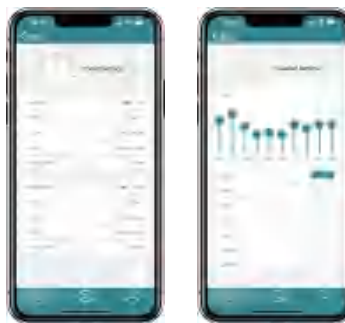


## Reset



In the unlikely case of any pairing problem Place earbuds into charging case and go to the BoomPods App and select Reset.

Further enhance your experience by downloading the BoomPods App, go to the App store.



Battery	50mAh Built-in Lithium Battery
Case battery	500mAh Lithium Battery
Charge time	1.5 hrs
Frequency:	20- 20 KHz
Microphone Type	MEMS, Omni-directional
Sensitivity	-42dB @ 1kHz
Mic frequency range	100Hz-10KHz
Operating temperature	-0c-45c
Bluetooth	V5.3
IPX Rating	IPX 6
Play time	5.5 hrs (1 charge) total 30hrs

The Declaration of Conformity can be found at: <https://www.boompods.com/product/soundwave>  
Hereby, BoomPods declares that the radio equipment type (Earphone with Bluetooth) is in compliance with Directive 2014/53/EU.  
CEC ID:2A36Q-SOUNDWAVE



iPod, iPhone, and iPad are trademarks of Apple Inc registered in the US and other countries  
Android is a registered trademark of Google Inc, registered in the US and other countries  
BOOMPDS is a trademark of BOOMPDS LTD. BOOMPDS #2023 All Rights.  
BOOMPDS Ltd (UK) Newnham11 7AQ UK  
BOOMPDS (EU), Gramca, 05-506, PL  
info@boompods.com Registered No: 08147066. Made in China.

## FCC STATEMENT :

This device complies with Part 15 of the FCC Rules. Operation is subject to the following two conditions:

This device may not cause harmful interference, and

This device must accept any interference received, including interference that may cause undesired operation.

Warning: Changes or modifications not expressly approved by the party responsible for compliance could void the user's authority to operate the equipment.

NOTE: This equipment has been tested and found to comply with the limits for a Class B digital device, pursuant to Part 15 of the FCC Rules. These limits are designed to provide reasonable protection against harmful interference in a residential installation. This equipment generates uses and can radiate radio frequency energy and, if not installed and used in accordance with the instructions, may cause harmful interference to radio communications. However, there is no guarantee that interference will not occur in a particular installation. If this equipment does cause harmful interference to radio or television reception, which can be determined by turning the equipment off and on, the user is encouraged to try to correct the interference by one or more of the following measures:

Reorient or relocate the receiving antenna.

Increase the separation between the equipment and receiver.

Connect the equipment into an outlet on a circuit different from that to which the receiver is connected.

Consult the dealer or an experienced radio/TV technician for help.

## RF warning statement:

The device has been evaluated to meet general RF exposure requirement. The device can be used in portable exposure condition without restriction.