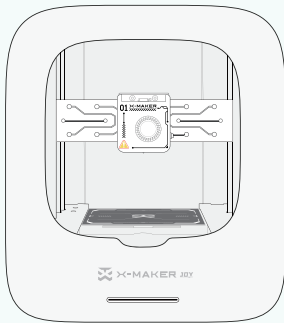
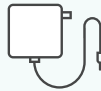


CREATING TOYS BETTER THAN PLAYING

Packing List



3D Printer



Power Adapter



Filament Holder



Flexible & Magnetic
Baseplate



PLA Filament



Pliers



Calibration Card



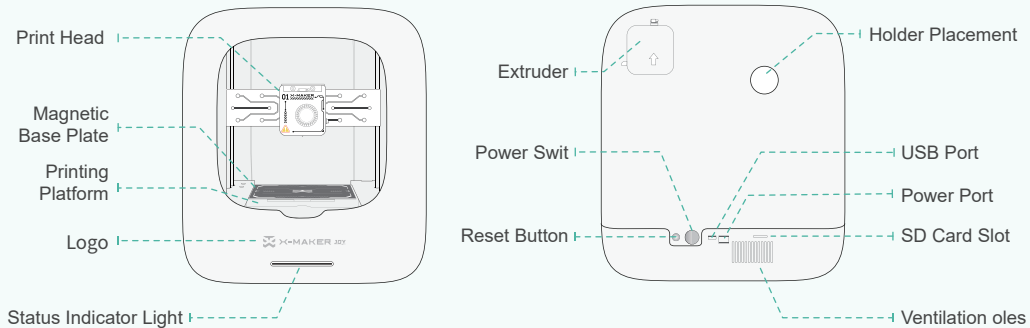
Quick Guide

Notes

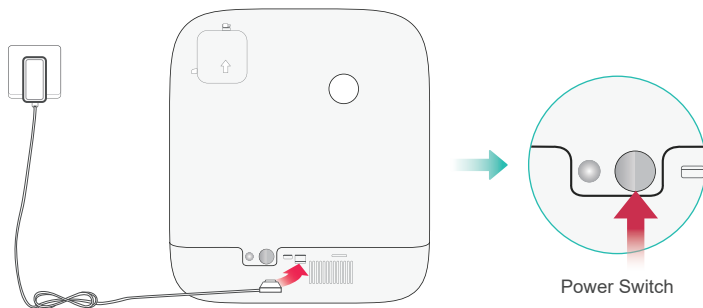
- AOSEED filaments are recommended. Do not frequently change filaments of various brands to avoid nozzle jamming.
 - Please notice the supported versions when installing X-MAKER App
 - Recommended ambient temp for using the printer is 0-35 C . Please turn off the printer when not in use
- For more information, please visit www.aoseed.com



How to start?



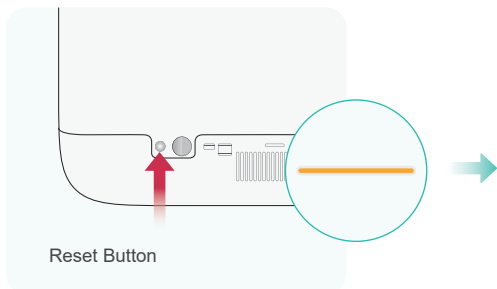
01 Power on



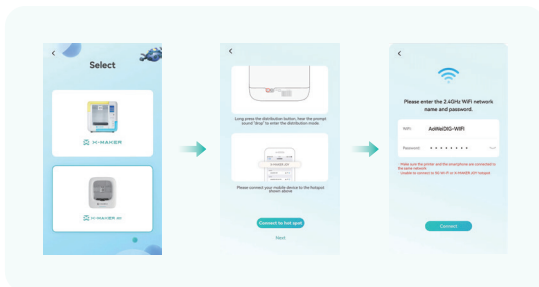
Note

Please keep your hands dry when taking out the power cord. Connect the power cord first, then turn on the power switch.

02 Connect to Printer

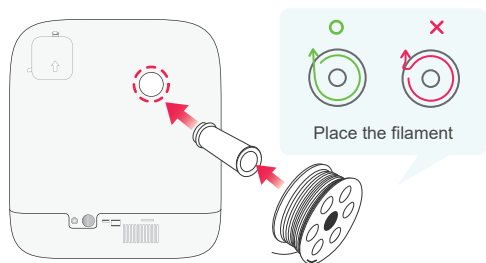


Long press the red button at the back until you hear a prompt beep, and the indicator light turns yellow, indicating a successful reset



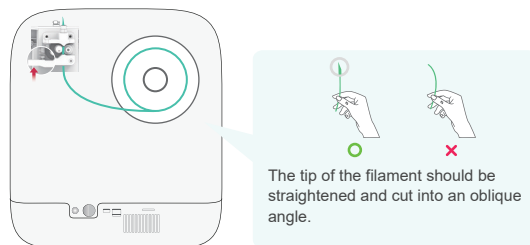
Launch the app. Select X-MAKER JOY, then follow the operations shown in the diagram. Click the " **Connect Hotspot** " button. Enter the Wi-Fi account and password, and connect to the printer.

03 Install the filament holder



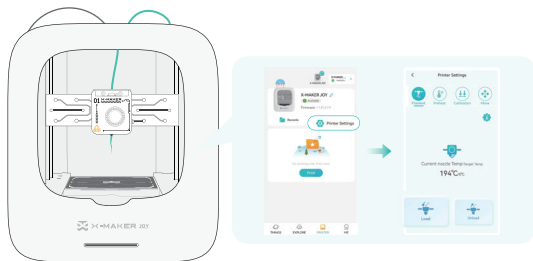
Please make sure the filaments are not knotted or intersected before placing the spool on the holder.

04 Install the filament



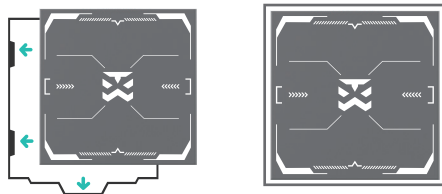
Insert the tip into the filament inlet until the prefeeder grabs the material. Push the spring upward (as shown by the red arrow in the figure above), to make the filament enter smoothly.

05 Load the filament



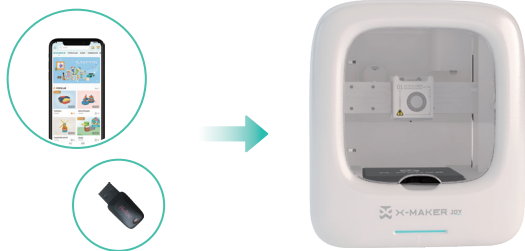
After connection, go to App Printer-Printer Settings-Filament, and click Load. Wait for the nozzle to heat. Loading is complete when filament comes out.(Make sure the nozzle is clean before printing.)

06 Place the Baseplate



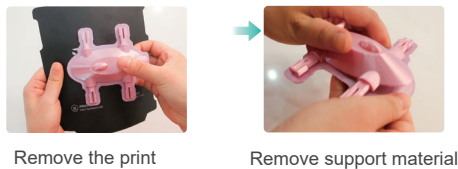
Ensure the baseplate is aligned with the heating platform.Keep the baseplate clean and flat after placement.

07 Model printing



Creative U-disk Printable Models
Easy-to-use one-press printing with the X-MAKER App

08 Print complete



Remove the print

Remove support material

Allow the printer to cool down below 45 °C before taking out the model in case of burns.

Remove the support structures of modelsm using pliers.

X-MAKER App

Download and installation

- For Windows PC

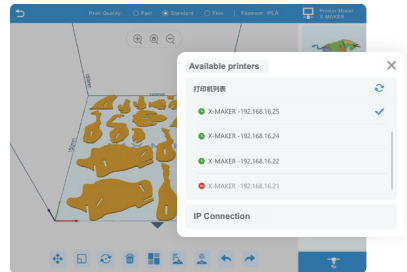
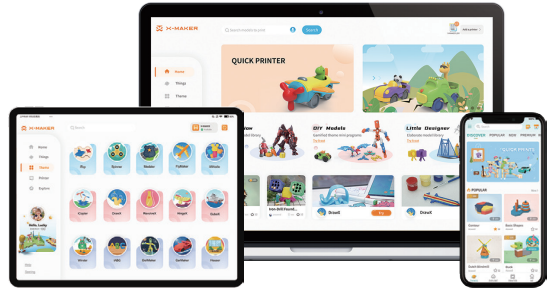
<https://www.aoseed.com/downloads>

Or, install the App from U disk

- For Android Tablet / iPad / Smartphones

<https://www.aoseed.com/downloads>

Or, search "X-MAKER or XMAKER" in Googleplay / App Store



High-speed Wi-Fi & Easy-to-use One-press Printing

FCC WARNING

This device complies with part 15 of the FCC Rules. Operation is subject to the following two conditions:

- (1) this device may not cause harmful interference, and
- (2) this device must accept any interference received, including interference that may cause undesired operation. Any changes or modifications not expressly approved by the party responsible for compliance could void the user's authority to operate the equipment.

NOTE: This equipment has been tested and found to comply with the limits for a Class B digital device, pursuant to Part 15 of the FCC Rules. These limits are designed to provide reasonable protection against harmful interference in a residential installation. This equipment generates, uses and can radiate radio frequency energy and, if not installed and used in accordance with the instructions, may cause harmful interference to radio communications. However, there is no guarantee that interference will not occur in a particular installation. If this equipment does cause harmful interference to radio or television reception, which can be determined by turning the equipment off and on, the user is encouraged to try to correct the interference by one or more of the following measures:

- Reorient or relocate the receiving antenna.
- Increase the separation between the equipment and receiver.
- Connect the equipment into an outlet on a circuit different from that to which the receiver is connected.
- Consult the dealer or an experienced radio/TV technician for help.

To maintain compliance with FCC's RF Exposure guidelines, This equipment should be installed and operated with minimum distance between 20cm the radiator your body: Use only the supplied antenna.