



User Manual

Hi, let's know about X-MAKER.

X-MAKER is a smart multifunctional 3D printer, which is a brand new product with gamify 3D design apps. One-press printing, with minimalist interaction design, intelligent data process and high-speed Wi-Fi transmission, makes this 3D printer available to everyone to create everything. X-MAKER is not only a 3D printer, but also equipped with powerful software and rich content, including “Things”, “Theme”, “Design”, “Explore” and other channels. This product is constantly updated. No matter you are a beginner or an advanced player, you will always have new ways to play.

X-MAKER-MAKE CREATIVITY TOUCHABLE.

Contents

Our Product	01	X-PRINT	21
Product		Slicing Software	
Ingredients		Interface Overview	
Packing List			
3D Printer Instructions	03	Basic Parameters of X-MAKER	
Power On		3D Printer	23
Install Filament Holder		Daily Use of X-MAKER	24
Install Filament		Support	25
Load Filament			
Boot Settings			
Functions			
Printing Interface			
Loading Operations			
Unloading Operations			
Move			
Child Lock			
X-MAKER App	14		
Downloa			
Introduction			
Things			
Theme			
Design			



Our Product

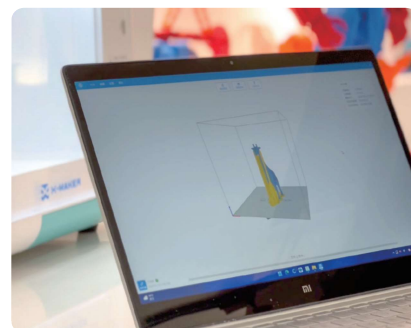
Product Ingredients



X-MAKER 3D Printer



X-MAKER Design App



X-PRINT Slicing Software

◆ Packing List ◆



◆ 3D Printer



◆ PLA Filament



◆ Filament Holder



◆ Power Cord



◆ Flexible & Magnetic Baseplate



◆ Pliers



◆ Tool Kit



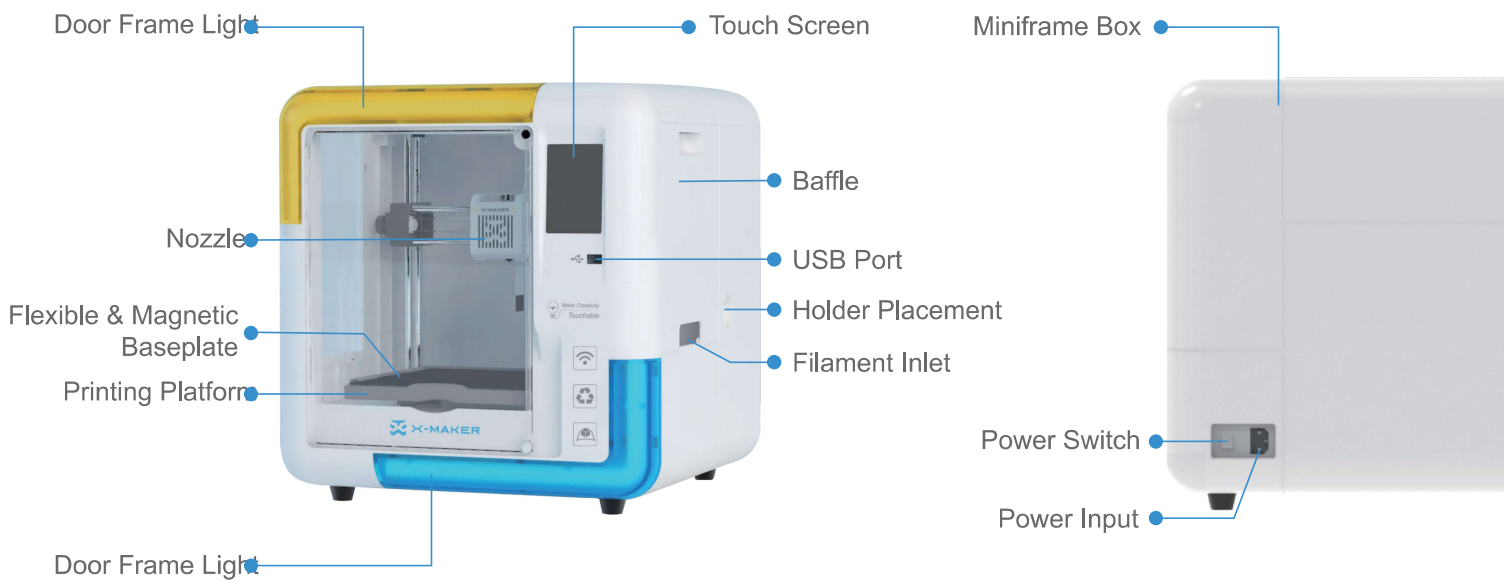
◆ Quick Start

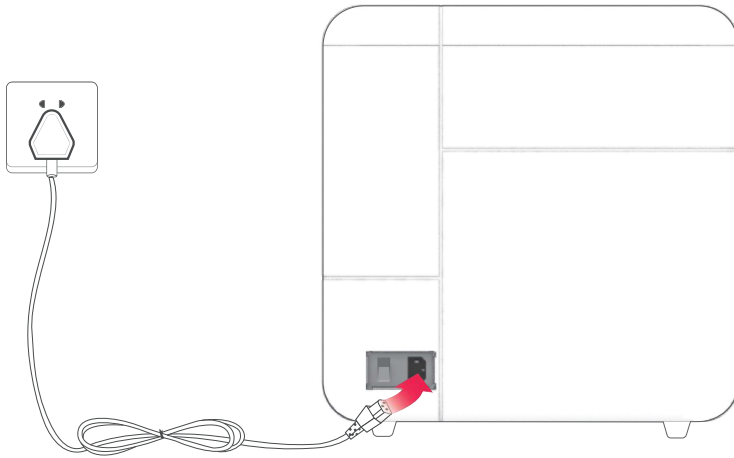


◆ U Disk

- ◆ Printable creative models
- ◆ X-MAKER App installer
- ◆ X-PRINT installer

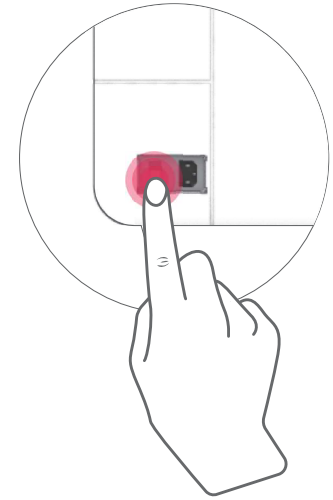
◆ X-MAKER 3D Printer ◆





Plug-in

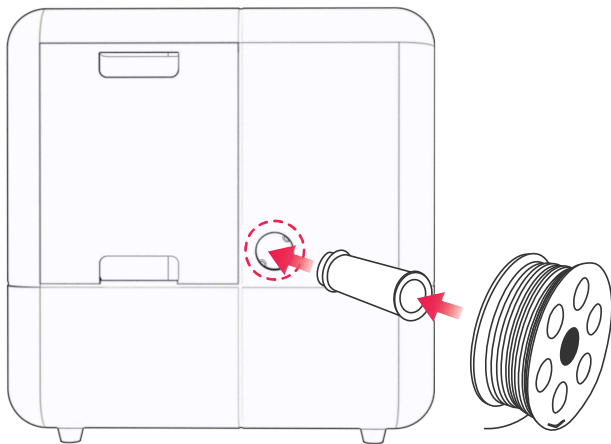
Take out the power cord and connect the printer to the power socket. (Please keep your hands dry.)



Power on

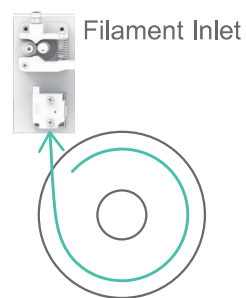
Press the power switch to start the printer.

◆ Install Filament Holder ◆

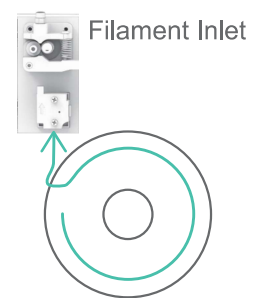


Install filament holder

Install the holder on the mainframe box and place the filaments.



✓ Right

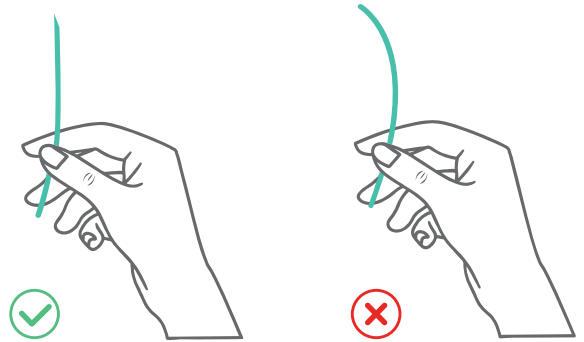
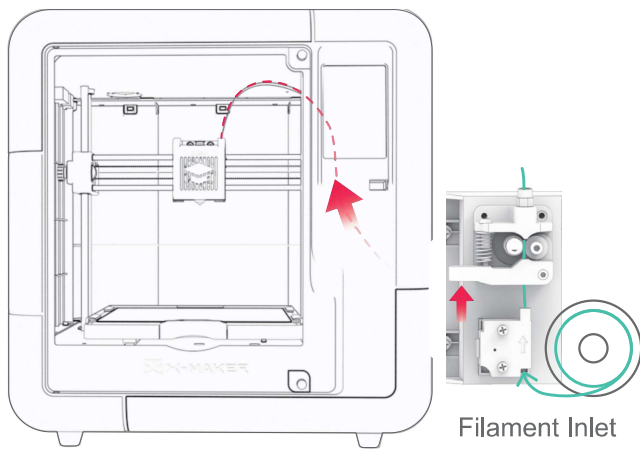


✗ Wrong

Place the filament

Place the filament on the holder. (Please make sure the filaments are not knotted or intersected.)

◆ Install Filament ◆



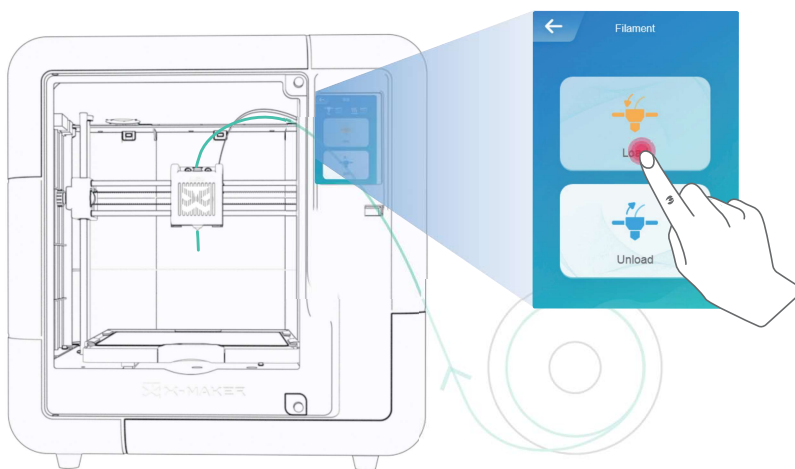
Note: The head end of filament should be straightened and cut into an oblique angle.

Instruction

Feed the filament into the guide pipe for about 3-5cm. Push the spring upward (as shown by the red arrow in the figure), to make the filament enter smoothly.

07

◆ Load Filament ◆



Loading has completed when filament outflows from nozzle.

(Note: Please clean the filament residue on nozzle before printing.)

Instruction

Click "Filament -> Load" on screen and wait for heating until the filament outflows from nozzle. Please repeat the above operation if the filament doesn't outflow.

08

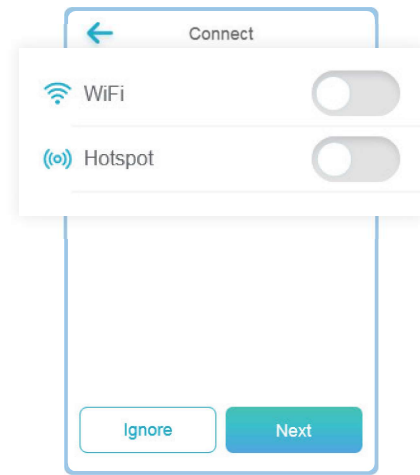
◆ Boot Settings ◆

When the printer is powered on, please set up the 3D printer according to the prompts.



Choose Language

Select your needed language. You can also click "Settings -> Language" to change it.

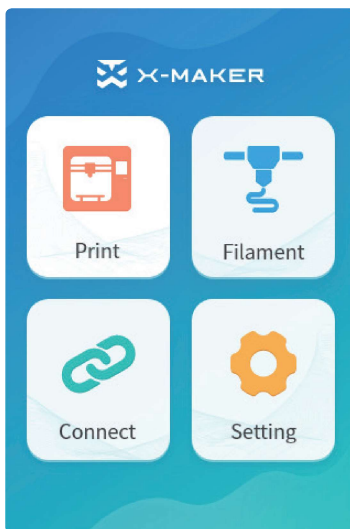


Connection

Wi-Fi: With the same WLAN, X-MAKER App can be connected to the printer.

Hotspot: When no WLAN network is available, hotspot on the printer can provide Internet access to the App.

◆ Functions ◆



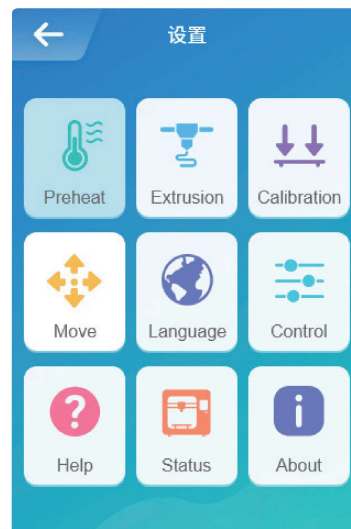
◆ Homepage

Printing: Select and print a document

Filament: Smart loading and unloading

Connection: Wi-Fi
Hotspot connection

Settings: More settings



◆ Settings

Preheat: Warming and cooling of nozzle and heated bed

Extrusion: Manual loading and unloading

Calibration: Level the baseplate

Move: Move the X axis, Y axis and Z axis

Language: Switch language

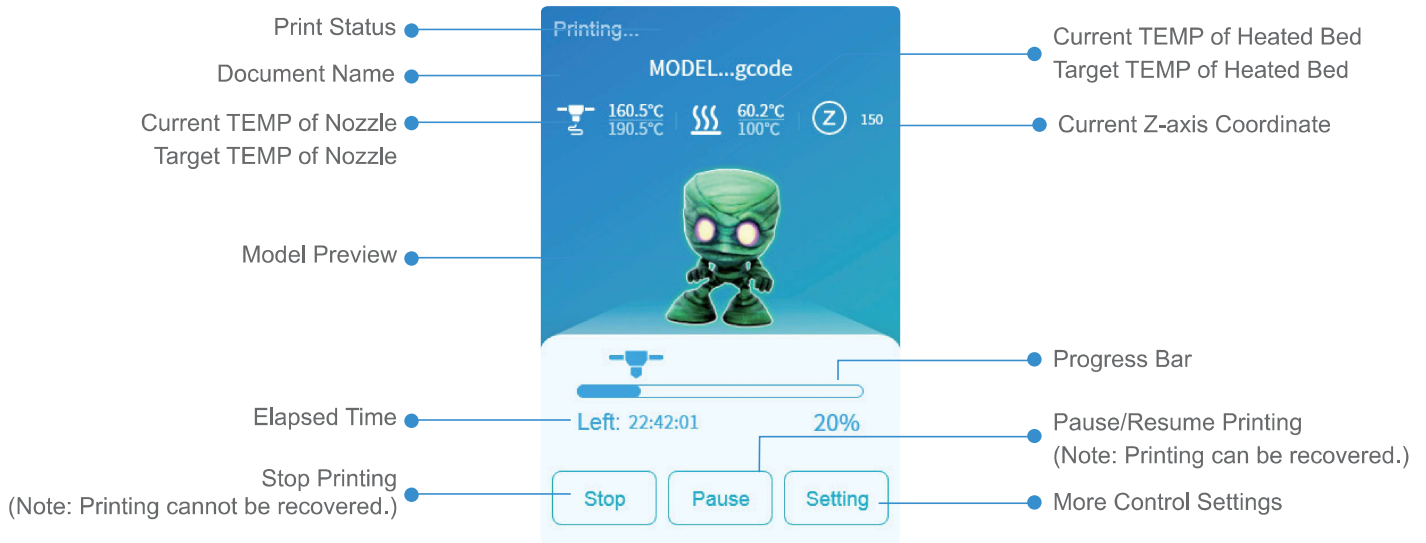
Control: Switches for light, fan and resuming printing after power failure

Support: More information

Status: Printer status

About: Printer information

◆ Printing Interface ◆

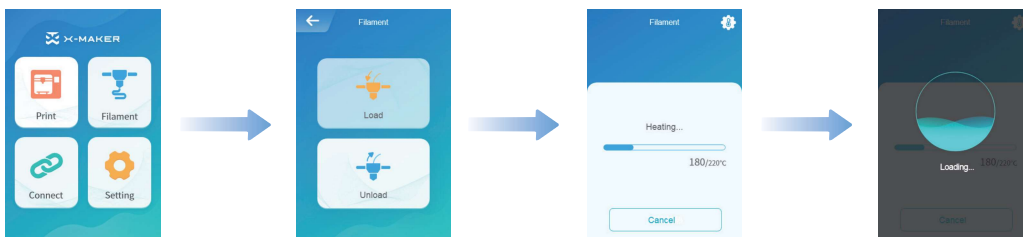


◆ Printing ◆

◆ Loading Operations ◆

Method 1

Click "Filament -> Load" and wait for heating until the filament outflows from nozzle.

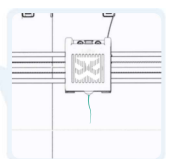


Method 2

Click "Preheat" -> Set target temperature -> Click "Start"; Target TEMP for PLA filaments is 200 °C. Target TEMP for ABS filaments is 230 °C. (You can refer to the target TEMP on the packing box for different filaments.)

Click "Extrusion -> Unload" and set the returning length to 10mm. When filaments outflow to the filament inlet push the spring upward and then return the filaments.

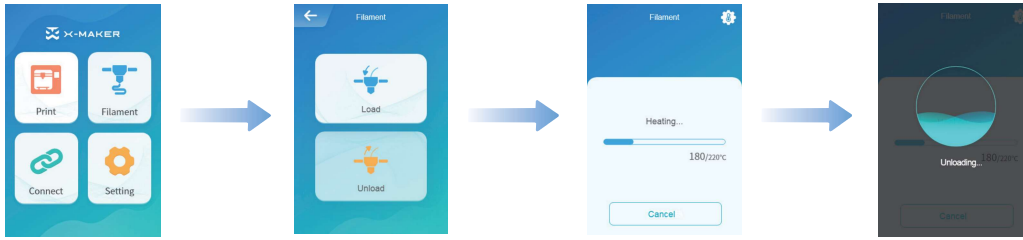
Note: To prevent inlet blockage caused by filament residue, please load before unloading.



◆ Unloading Operations ◆

Method 1

Click "Filament -> Unload" and wait for heating until the filament unloads from nozzle. When "Unloading Interface" is closed, filaments can be uploaded from filament inlet.

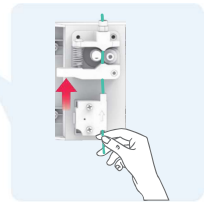


Method 2

Click "Preheat" -> Set target temperature -> Click "Start"; Target TEMP for PLA filaments is 200 °C. Target TEMP for ABS filaments is 230 °C. (You can refer to the target TEMP on the packing box for different filaments.)

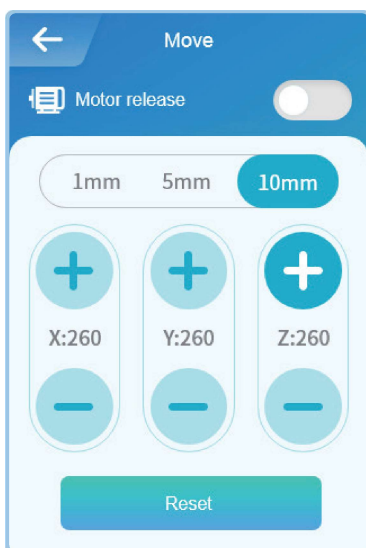
Click "Extrusion -> Unload" and set the returning length to 10mm. When filaments outflow to the filament inlet, push the spring upward and then return the filaments.

Note: To prevent inlet blockage caused by filament residue, please load before unloading.



13

◆ Move ◆



◆ Settings

Move

Click "Settings -> Move". You can adjust the relative position of nozzle and baseplate by adjusting the coordinates of X/Y/Z axes.

Reset

Click "Reset". Don't conduct the next operation until each axis returns to the origin.

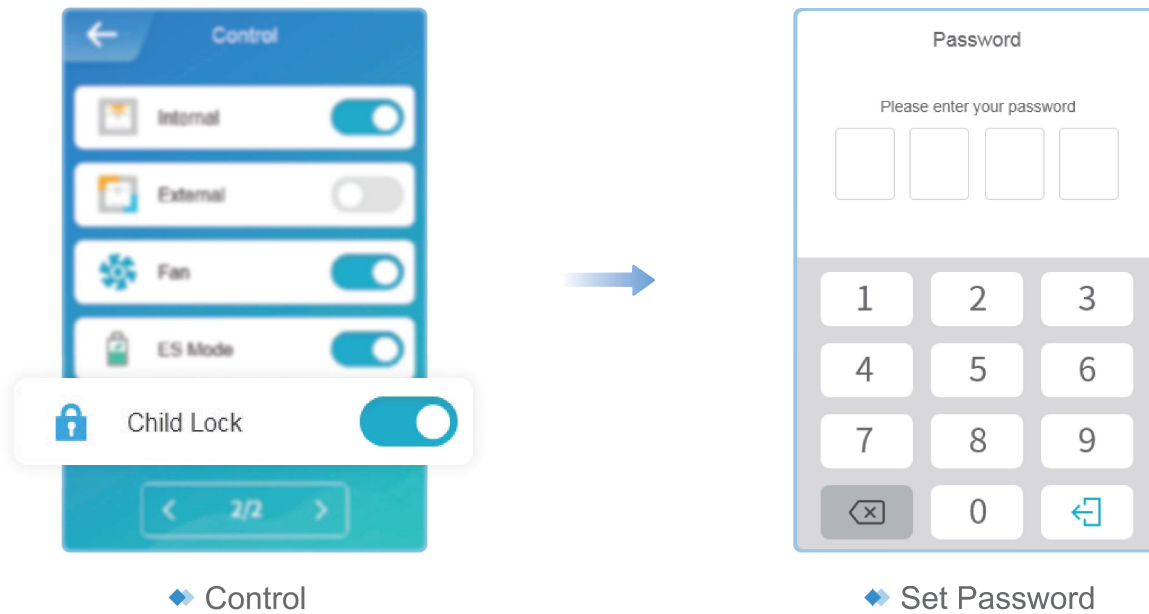
Standby Mode

In this mode, you can manually adjust the coordinate of nozzle. (X/Y/Z axes adjustments and "Reset" button are unavailable.)

14

◆ Child Lock ◆

A considerate design for families who carry out STEM education Prevent children from touching the screen mistakenly; When the "Child Lock" is on, the screen will be automatically locked in 30 seconds and you need to enter the password for the following operation.



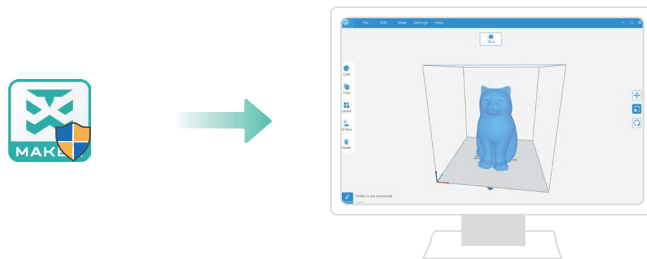
X-MAKER App

◆ Download ◆

For Windows PC

Click "Settings -> Help" on the App (or you can visit en.ime3d.com), and scan the QR code for download.

*Windows 7 or above

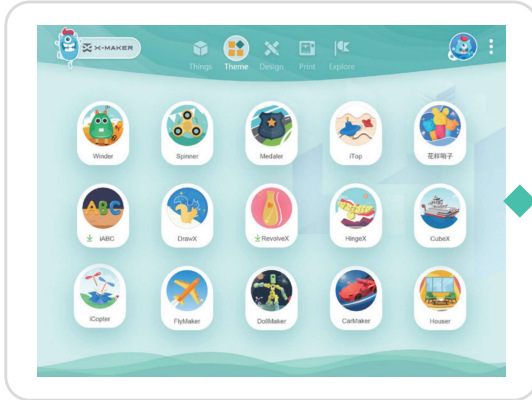


For Android Tablet / iPad

You can download the app in corresponding app stores, or visit the website (en.ime3d.com) and scan the download code.



Introduction



Things

Well-designed 3D Models for Infinite Creativity



Theme

Gamify 3D Customized Gadgets for Personalized Design



Design

Two Powerful 3D-design Apps for Advanced Creation



Print

Intelligent Data Process for One-press Printing

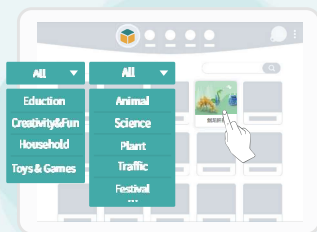


Explore

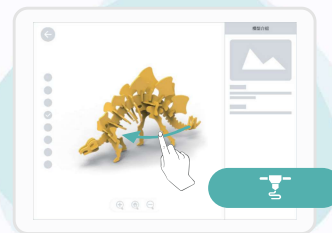
Constant Updates for More Gameplay Exploration

Things

Well-designed 3D model library in four categories
Create anything with your infinite creativity



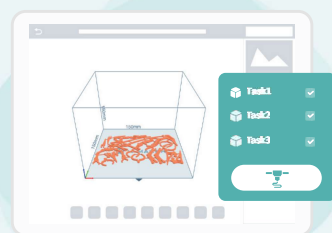
Original well-designed 3D model library



3D real-time view



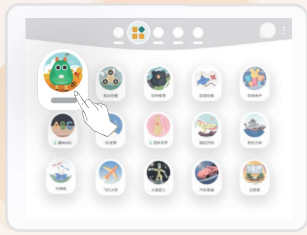
High-speed & stable Wi-Fi connection



Intelligent data process for one-press printing

◆ Theme ◆

Gamify 3D Customized Gadgets for Personalized Design Make Creation Touchable



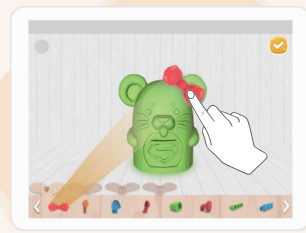
15 gamify 3D design gadgets



Diverse themes can be selected



High-speed Wi-Fi transmission for printing



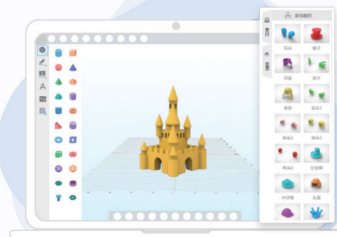
Customize unique model toys

◆ Design ◆

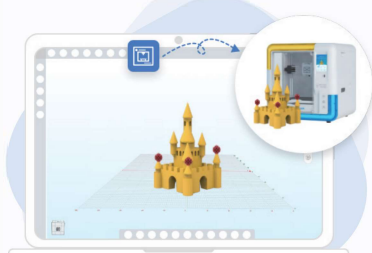
Graphic & Modeling 3D Design Apps for Advanced Creation



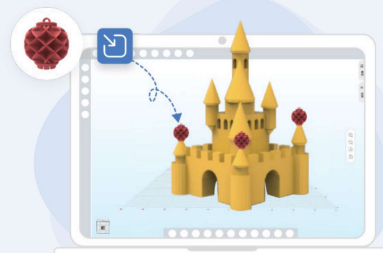
Two powerful 3D-design apps



Magic 3D geometry design



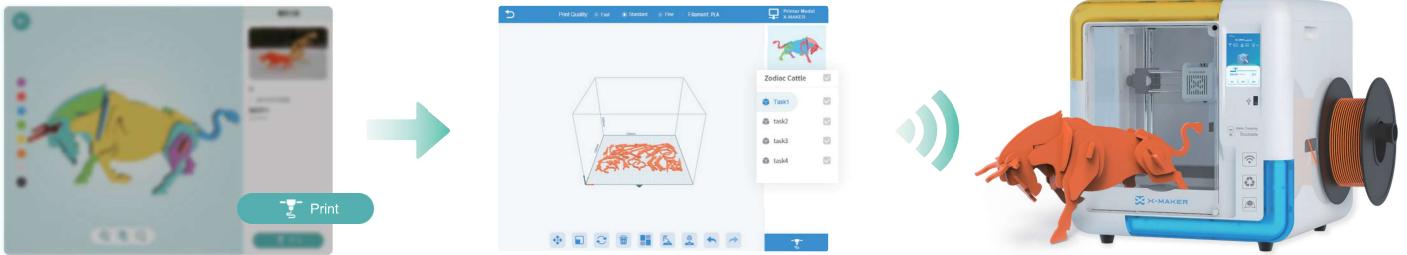
High-speed Wi-Fi transmission for printing





Compatible with imported models

◆ One-press Printing ◆

Automatic Task Division Automatic Slicing and Uploading



One-press Printing

Select the model and click “”. The file will be divided into several tasks and you can preview the model in each task. Click “” again, and the model will be sliced automatically. You can save the slicing files, or upload them to the printer and print the model.



X-PRINT

◆ Slicing Software ◆

Please install the free slicing software X-PRINT on your computer.
(Download from the website: en.ime3d.com/Downloads)

Support Platform

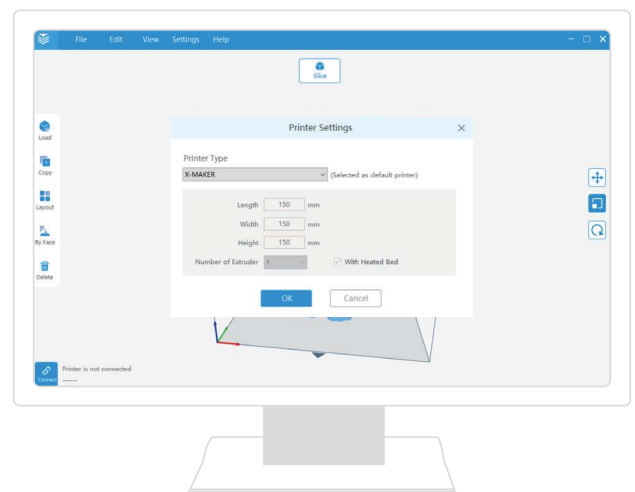
Windows

Server Requirements

- Display card compatible with OpenGL 2
- Intel Core 2 or AMD Athlon 64 or later
- At least 4GB of memory (8GB or above is recommended)
- 64-bit processor

Install

Double-click the download file and launch the setup wizard to install X-PRINT. Please configure X-MAKER printer when you launch it for the first time.



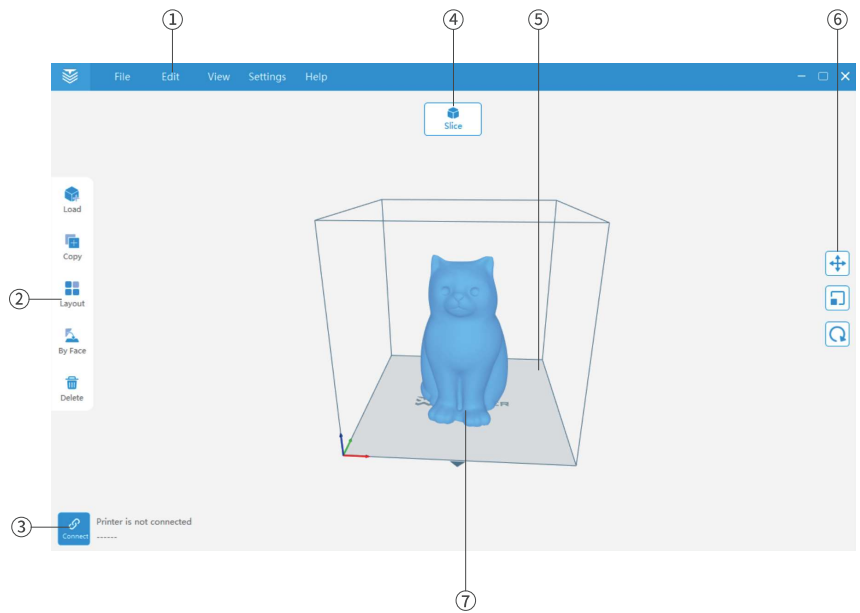
Note: If you don't set it up, you can click "Settings -> Printer" to configure X-MAKER printer later.

Interface Overview

Main Interface of X-PRINT

- ① Menu Bar
- ② Toolbar
- ③ Printer Connection
- ④ [Slicing] Button
- ⑤ Printer Working
- ⑥ Operations of Model
- ⑦ Model

For more instructions on how to use X-PRINT, please visit our website. (en.ime3d.com)



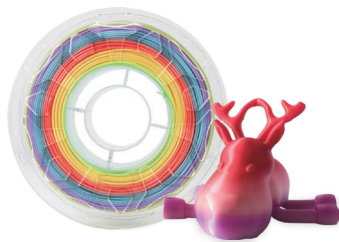
Basic Parameters of X-MAKER

Type: X-MAKER	Machine Size: 360*360*380mm
Print Speed: 20~280mm/s	Machine Weight: 13.7kg
Nozzle TEMP: $\leq 265^{\circ}\text{C}$	Package Size: 460*460*460mm
Hot Bed TEMP: $\leq 110^{\circ}\text{C}$	Total Weight: 14.4kg
Nozzle Diameter: 0.4mm	Max Printable Size: 150*150*150mm
Recommended Filament: PLA/ABS	Control Panel: 3.5-inch Touch Screen
Filament Diameter: 1.75mm	Printing Method: Wi-Fi / U Disk
Language: Chinese / English	File Format: xcode/gcode
Power: INPUT AC 100V-120V 3.2A 200v~240V 1.6A 50/60Hz OUTPUT +24V 6.5A	Bundled Software: X-MAKER App / X-PRINT

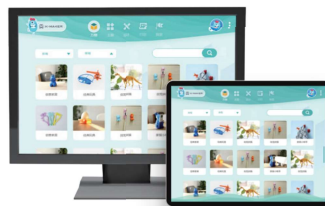


Daily Use of X-MAKER

For printer stability and good models, please pay attention to the following matters:



IME3D filaments are recommended. Do not frequently change filaments of different brands or types to avoid nozzle jamming. Filaments should be used up as soon as possible after opening.



Please notice the supported versions when installing X-MAKER App. The App can be installed on some Android smartphones but experience will be affected because of limited screen width.



Recommended ambient TEMP for using the printer is 0-35°C. If you don't use it, please turn off the power of the printer.

For more information, please visit en.ime3d.com.



Support

Tech Support

X-MAKER users can enjoy lifelong technical support. (Technical problems unrelated to X-MAKER cannot be solved.) If you meet any technical problem, please ask our after-sales customer service for help.

Website: en.ime3d.com



Scan for more support

Reminder

1. Read the instructions carefully before using the machine.
2. Machines that have been repaired in the warranty period can still enjoy the remaining warranty service.
3. If you need return, exchange or depot repair, please send the machine back with the original packaging, to avoid other problems that may happen in the express delivery process. (It is recommended to keep the original packaging.)
4. When applying for QA service, please provide Product Code, Purchase Voucher, Order ID and Invoice. Failing that, the company has the right to refuse offering QA service.
5. Service Hours: Monday to Saturday, 8:30 - 20:45 (except official holidays)

Hotline: 021-60719032

E-mail: overseas_sales@aoweidig.com

Thank you for your support and trust in our products!

If you have any suggestion or idea about our products and services, please send us the e-mail (overseas_sales@aoweidig.com). Your feedback and suggestions are of great importance to us. Wish more cooperation with you!



Product Name: 3D printer
Product Type: X-MAKER V4.0
Manufacturer: Aowei (Shanghai) Digital Technology Co., Ltd.
Contact: +86-21-60719032
Address: Room 301, Building 12, No. 51, Lane 1895, Hutai Road,
Shanghai, China



Official Account



Customer Service

FCC WARNING

This device complies with part 15 of the FCC Rules. Operation is subject to the following two conditions: (1) this device may not cause harmful interference, and (2) this device must accept any interference received, including interference that may cause undesired operation.

Any changes or modifications not expressly approved by the party responsible for compliance could void the user's authority to operate the equipment.

NOTE: This equipment has been tested and found to comply with the limits for a Class B digital device, pursuant to Part 15 of the FCC Rules. These limits are designed to provide reasonable protection against harmful interference in a residential installation. This equipment generates, uses and can radiate radio frequency energy and, if not installed and used in accordance with the instructions, may cause harmful interference to radio communications. However, there is no guarantee that interference will not occur in a particular installation.

If this equipment does cause harmful interference to radio or television reception, which can be determined by turning the equipment off and on, the user is encouraged to try to correct the interference by one or more of the following measures:

- Reorient or relocate the receiving antenna.
- Increase the separation between the equipment and receiver.
- Connect the equipment into an outlet on a circuit different from that to which the receiver is connected.
- Consult the dealer or an experienced radio/TV technician for help.

To maintain compliance with FCC's RF Exposure guide lines, This equipment should be installed and operated with minimum distance between 20cm the radiator your body: Use only the supplied antenna.