

Vertical

Radiated Emission Measurement



Site LAB Chamber 2
 Limit: FCC Part15 Class B_30-1000MHz
 EUT: /
 M/N: Z01
 Mode: WORKING
 Note: ZHUO YOU CHUANG
 /

Polarization: **Vertical**
 Power:
 Distance: 3m

Temperature: 25(C)
 Humidity: 50 %

No.	Frequency (MHz)	Reading (dBuV)	Factor (dB/m)	Level (dBuV/m)	Limit (dBuV/m)	Margin (dB)	Detector	Height (cm)	Azimuth (deg.)	P/F	Remark
1	60.2801	21.06	14.16	35.22	40.00	4.78	peak	100	264	P	
2	137.4202	19.39	13.75	33.14	43.50	10.36	peak	100	24	P	
3	155.9101	19.08	13.88	32.96	43.50	10.54	peak	100	282	P	
4	199.9856	20.14	11.33	31.47	43.50	12.03	peak	100	297	P	
5	851.0353	8.39	26.24	34.63	46.00	11.37	peak	100	164	P	
6	906.4824	7.29	26.63	33.92	46.00	12.08	peak	100	74	P	

4.3. 20dB Bandwidth/99% Bandwidth

Limit

The 20dB bandwidth shall be less than 80% of the permitted frequency band.

Test Procedure

The transmitter output was connected to the spectrum analyzer through an attenuator. The bandwidth of the fundamental frequency was measured by spectrum analyzer with 1 KHz RBW and 3 KHz VBW.

The 20dB bandwidth is defined as the total spectrum the power of which is higher than peak power minus 20dB.

Test Configuration



Test Results

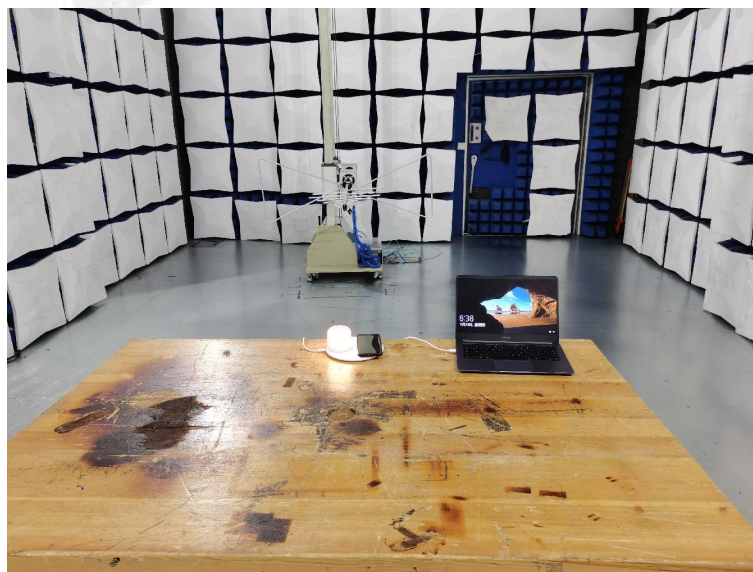
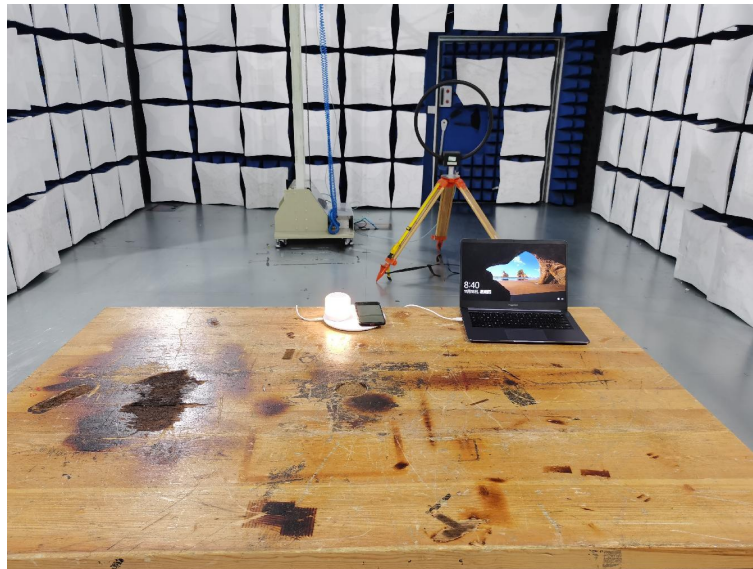
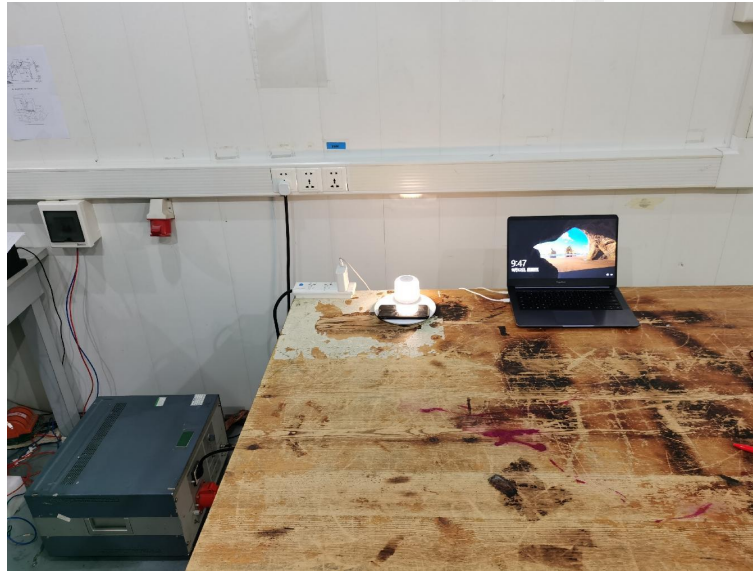
Model1

Frequency(MHz)	20dB bandwidth(KHz)	99% OBW(KHz)	Result
118.6	2.700	2.330	Pass

118.6 KHz

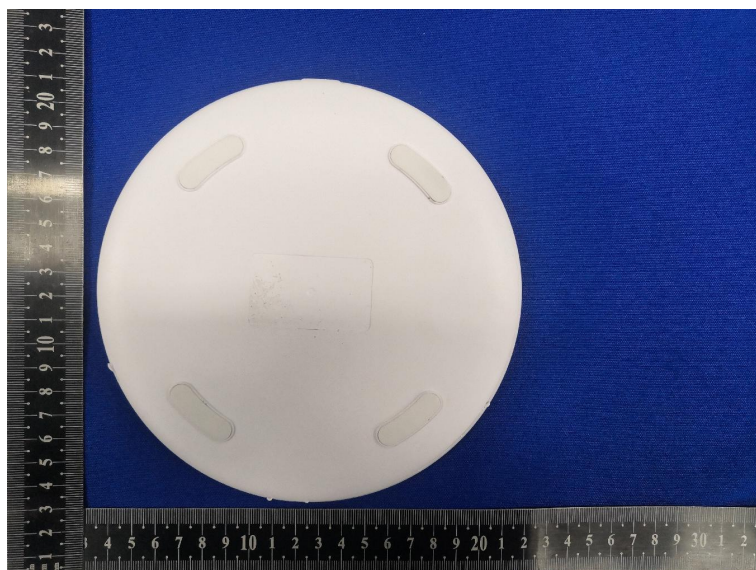
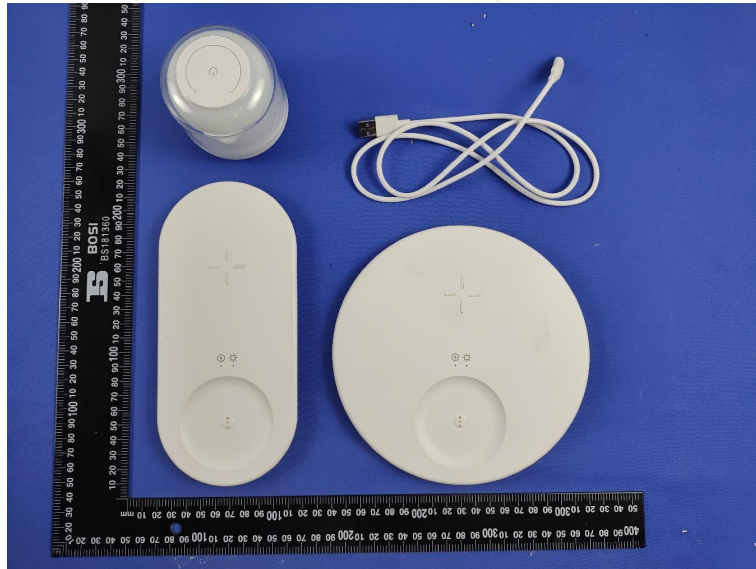


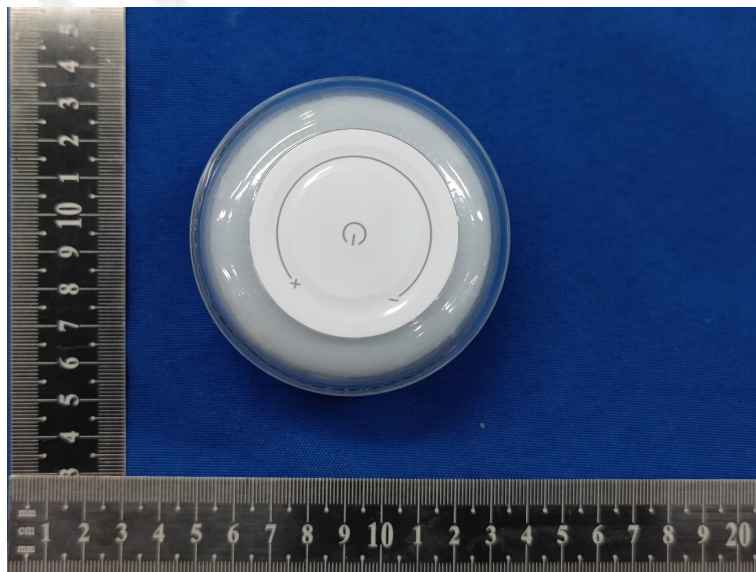
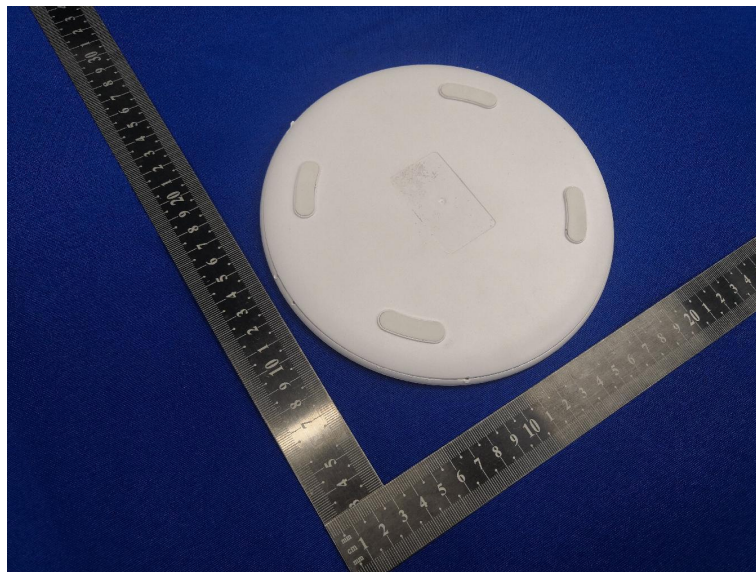
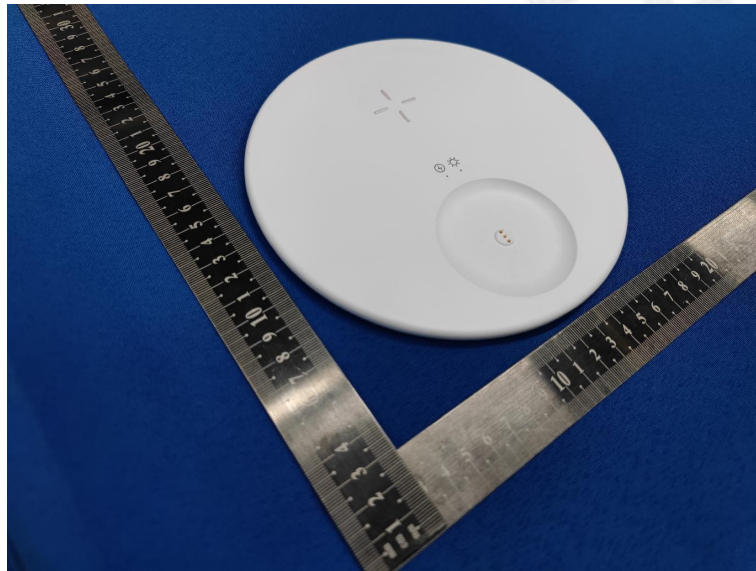
5. Test Setup Photos of the EUT

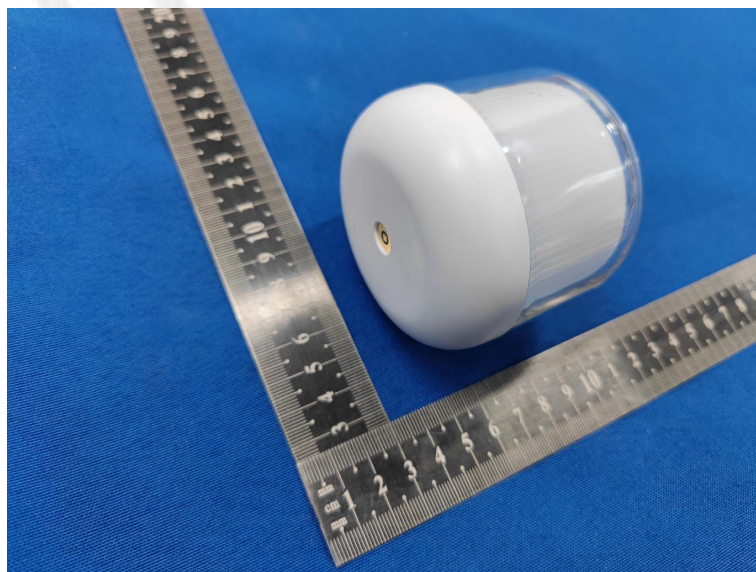
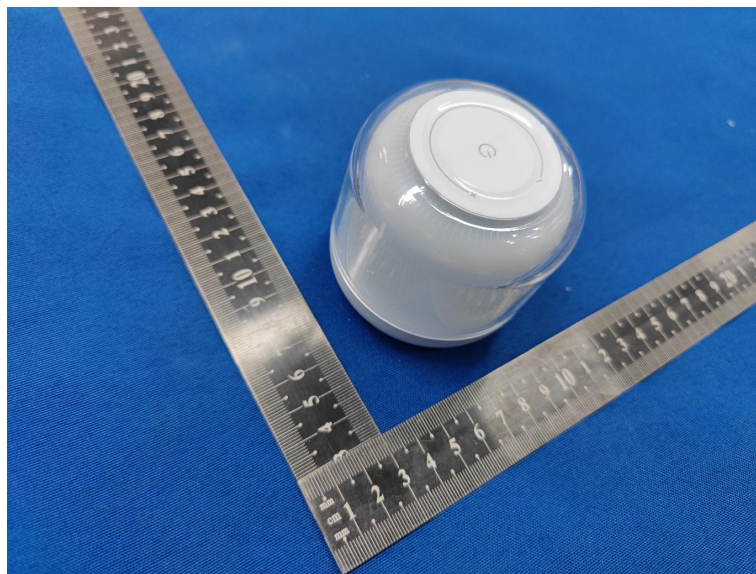
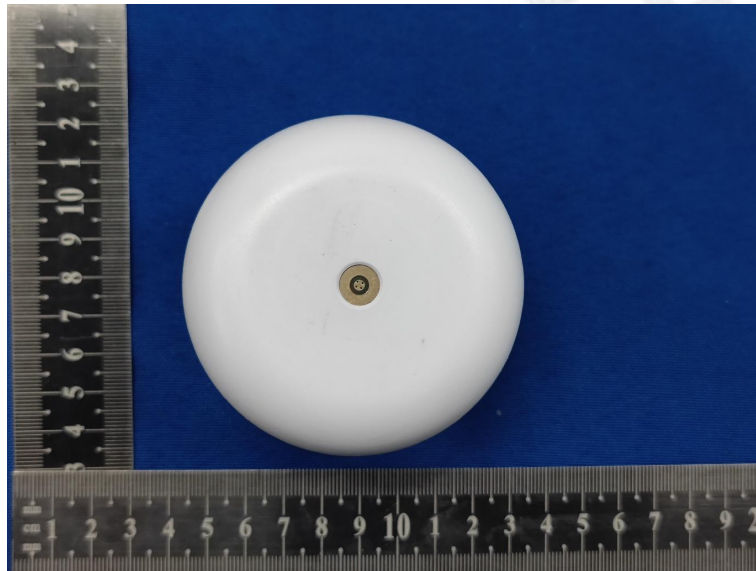


6. External and Internal Photos of the EUT

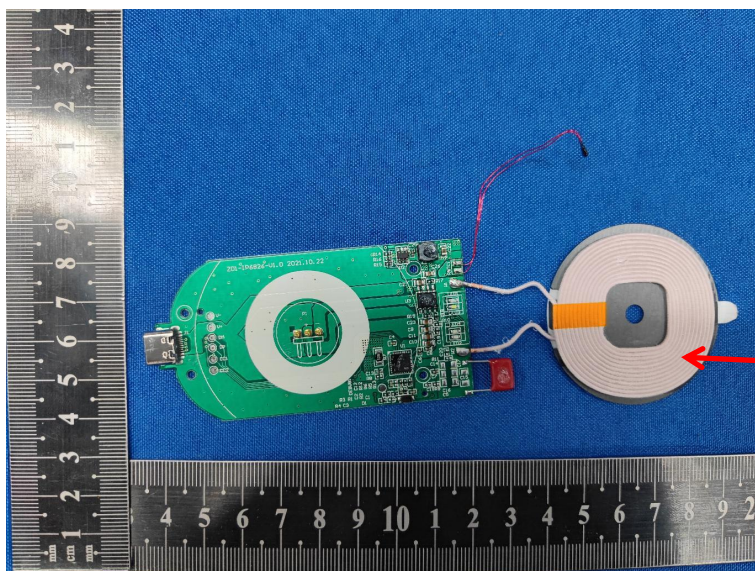
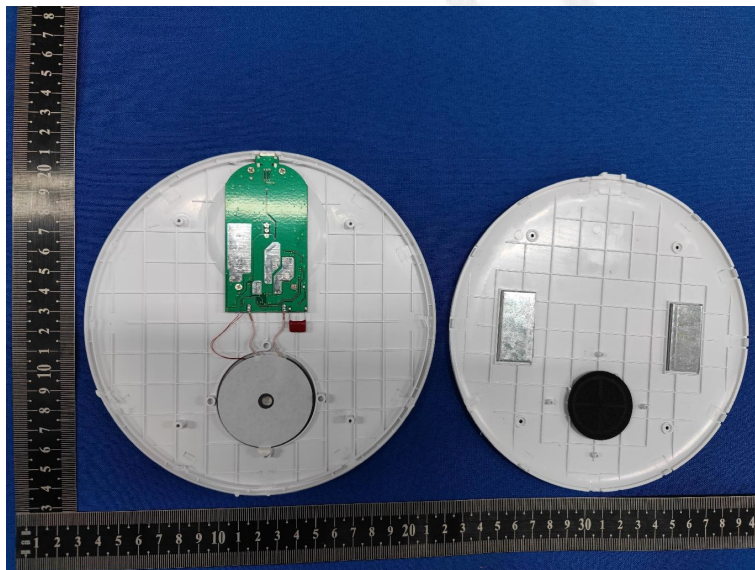
External Photos of EUT



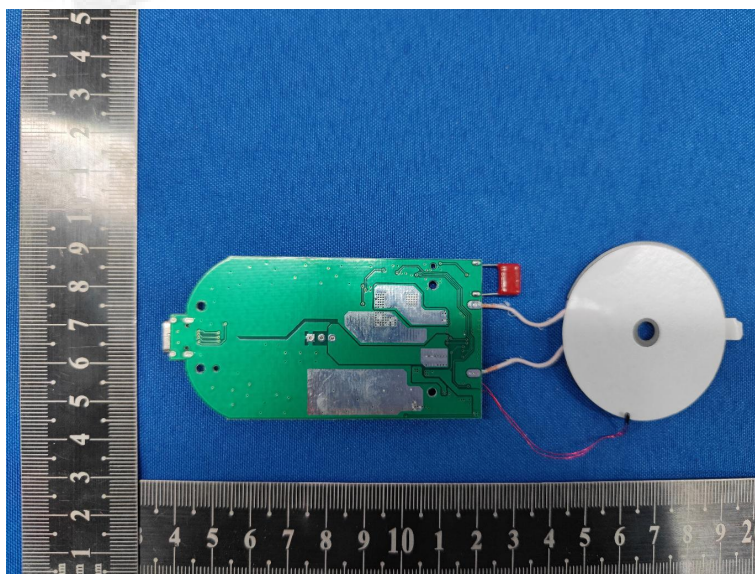


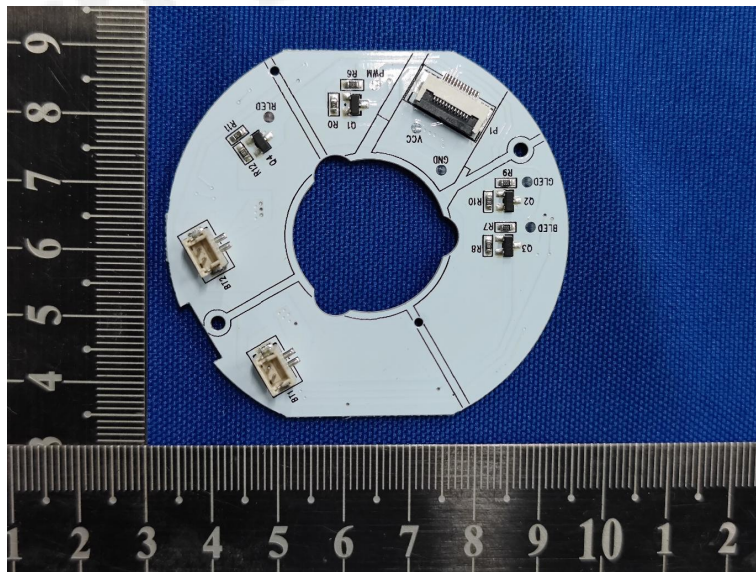
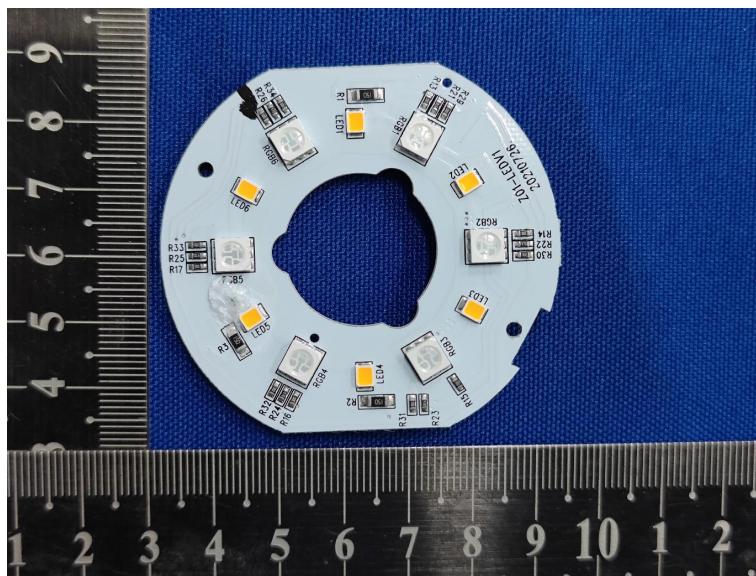
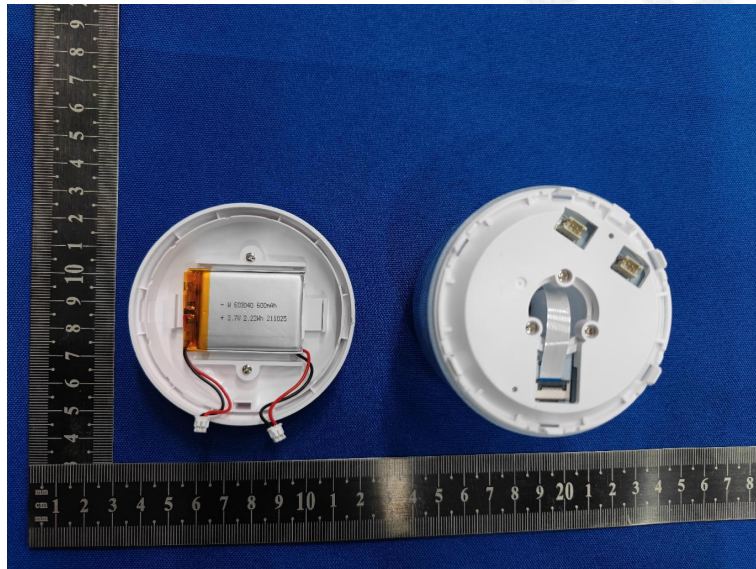


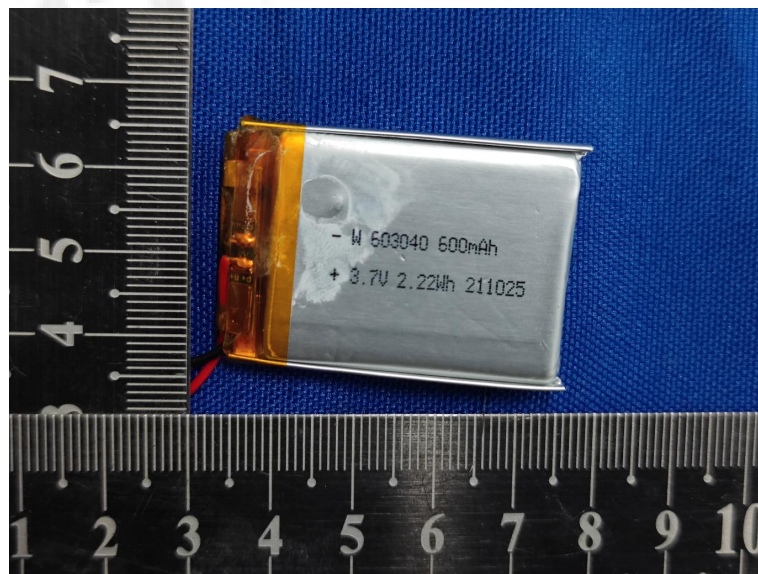
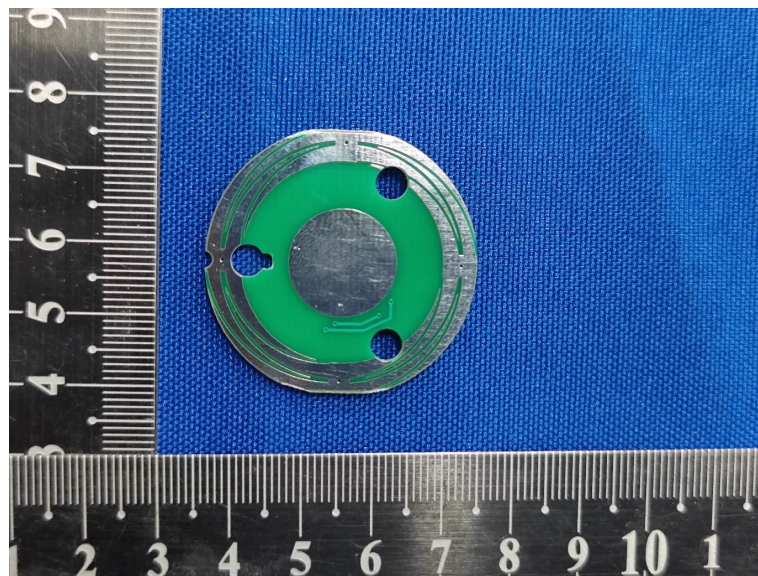
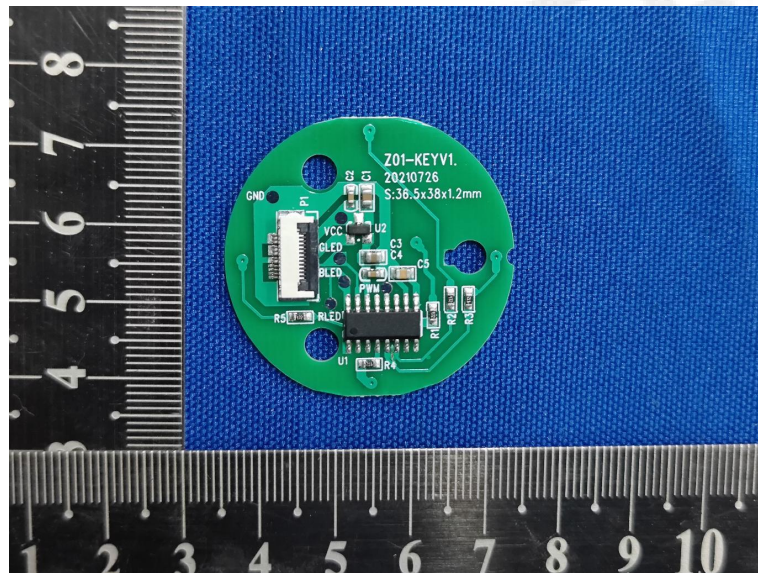
Internal Photos of EUT

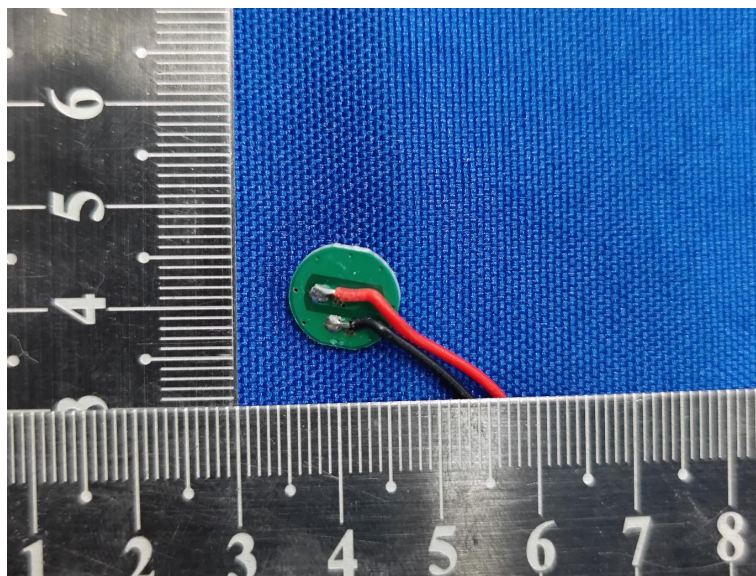
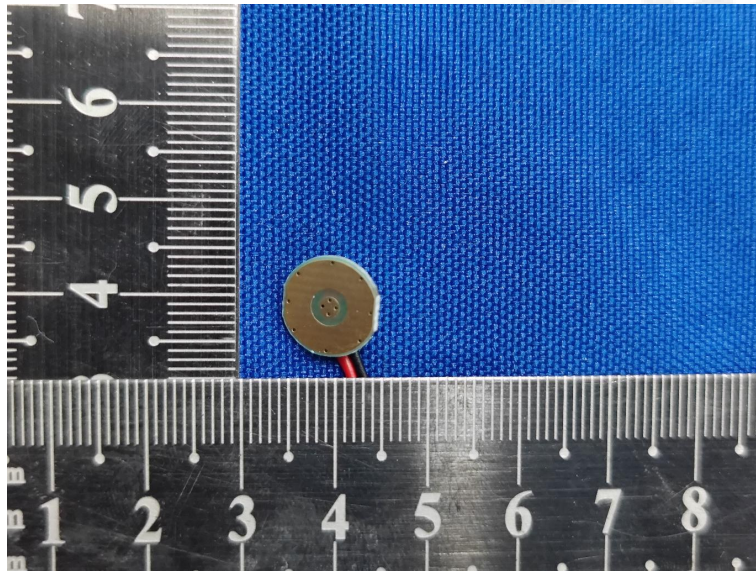


Loop Coil Antenna









***** End of Report *****