

Electric steering wheel

Instructions



Qianxun AG v1.0

2024/11/06

1 、 Key Function Introduction



:Start or end automatic driving.



:Collect point A.



:Collect point B.



:Move the current baseline according to the user's needs, it can be moved to the current position of the receiver machine



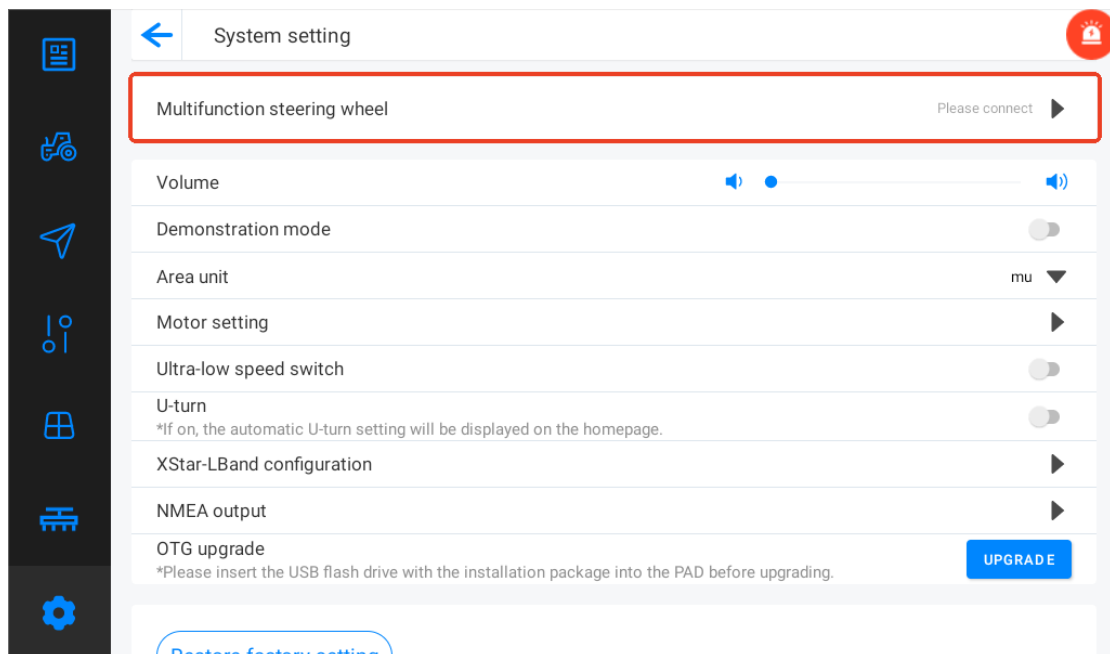
:Power switch



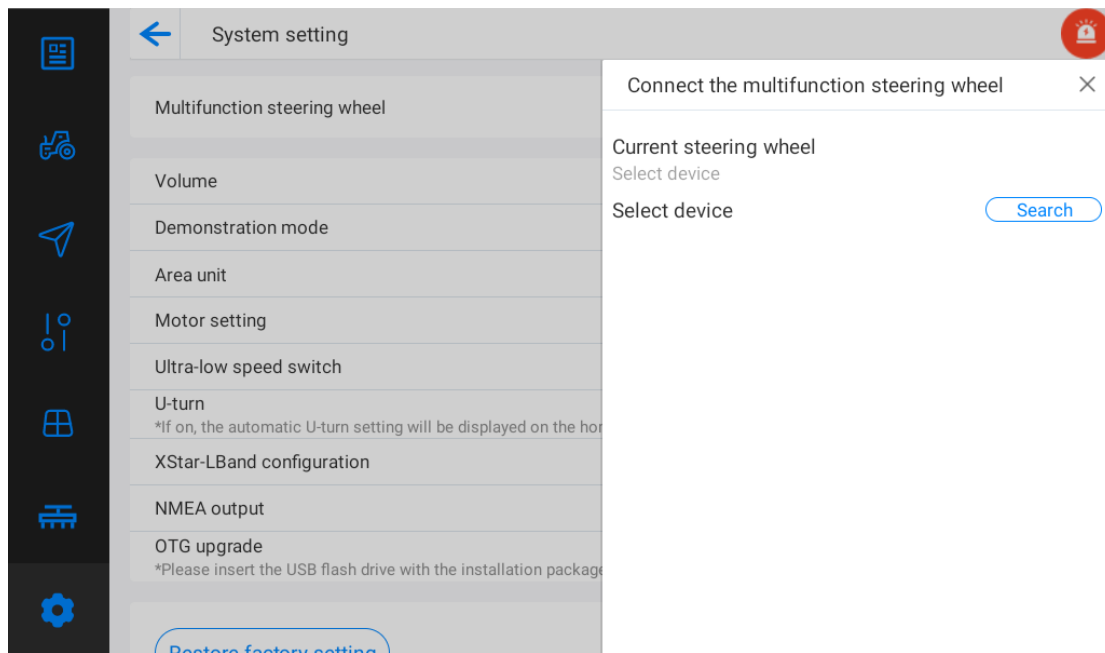
:Connection indicator light

2 、 Instructions for Use

- A. Press the multi-function steering wheel power switch for 3S to turn on the device.
- B. QYX Pro Tablet Operating System Device - Multifunctional steering wheel- Select the appropriate SN for Bluetooth connection.
- C. The multi-function steering wheel indicator light turns green when the connection is successful.



Multifunctional steering wheel



Bluetooth connection

FCC Statement

This equipment has been tested and found to comply with the limits for a Class B digital device, pursuant to part 15 of the FCC Rules. These limits are designed to provide reasonable protection against harmful interference in a residential installation. This equipment generates, uses and can radiate radio frequency energy and, if not installed and used in accordance with the instructions, may cause harmful interference to radio communications. However, there is no guarantee that interference will not occur in a particular installation. If this equipment does cause harmful interference to radio or television reception, which can be determined by turning the equipment off and on, the user is encouraged to try to correct the interference by one or more of the following measures:

- Reorient or relocate the receiving antenna.
- Increase the separation between the equipment and receiver.
- Connect the equipment into an outlet on a circuit different from that to which the receiver is connected.
- Consult the dealer or an experienced radio/TV technician for help.

FCC Radiation Exposure Statement

This device complies with FCC radiation exposure limits set forth for an uncontrolled environment. This equipment must be installed and

operated in accordance with provided instructions and the antenna(s) used for this transmitter must be installed to provide a separation distance of at least 20 cm from all persons.

This device complies with Part 15 of the FCC Rules. Operation is subject to the following two conditions:

- (1) this device may not cause harmful interference, and
- (2) this device must accept any interference received, including interference that may cause undesired operation.

Caution!

Any changes or modifications not expressly approved by the party responsible for compliance could void the user's authority to operate the equipment.