

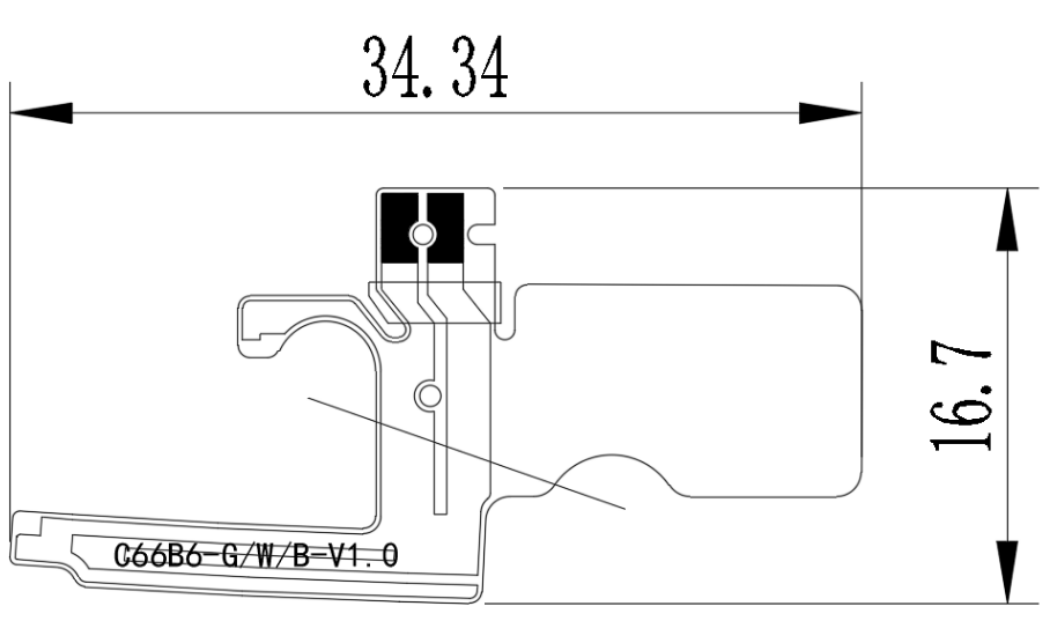
Shenzhen 3Good Wireless Technology Co., Ltd

Specification

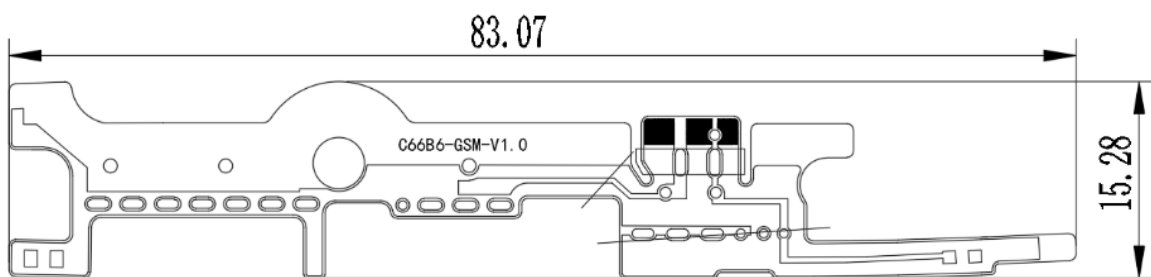
客户 Customer		规格型号 Specs	C66B6
三好料号 Part Number	C66B6-01 C66B6-02 C66B6-03	频段 Frequency Band	BT&2.4G WIFI&5GWIFI:2400~2483.5MHZ;5150~5850MH Z GSM850/900/1800/1900 WCDMA2/4/5 B2.4.5.12.17.66.71.41
颜色 Color	black	版本 Edition	REV:A1
销售 Salesperson		设计 Design	叶金强
结构 Structure	李富伦	确认 Confirm	周武
日期 Date		签字日期 Signing Date	
客户确认 Customer confirmation:			
Join hands to create the future			

Shenzhen 3Good Wireless Technology Co., Ltd
Room 501-508, Jinfulai Building, No. 49-1 Dabao Road, Bao'an
District, Shenzhen, China

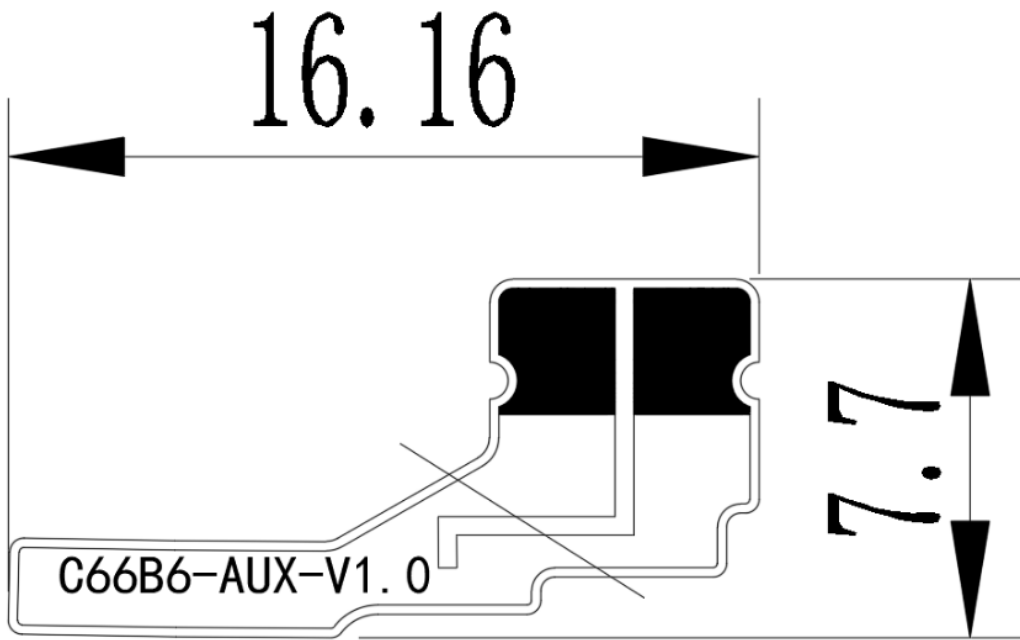
Three in one antenna



Main set antenna



Diversity antenna

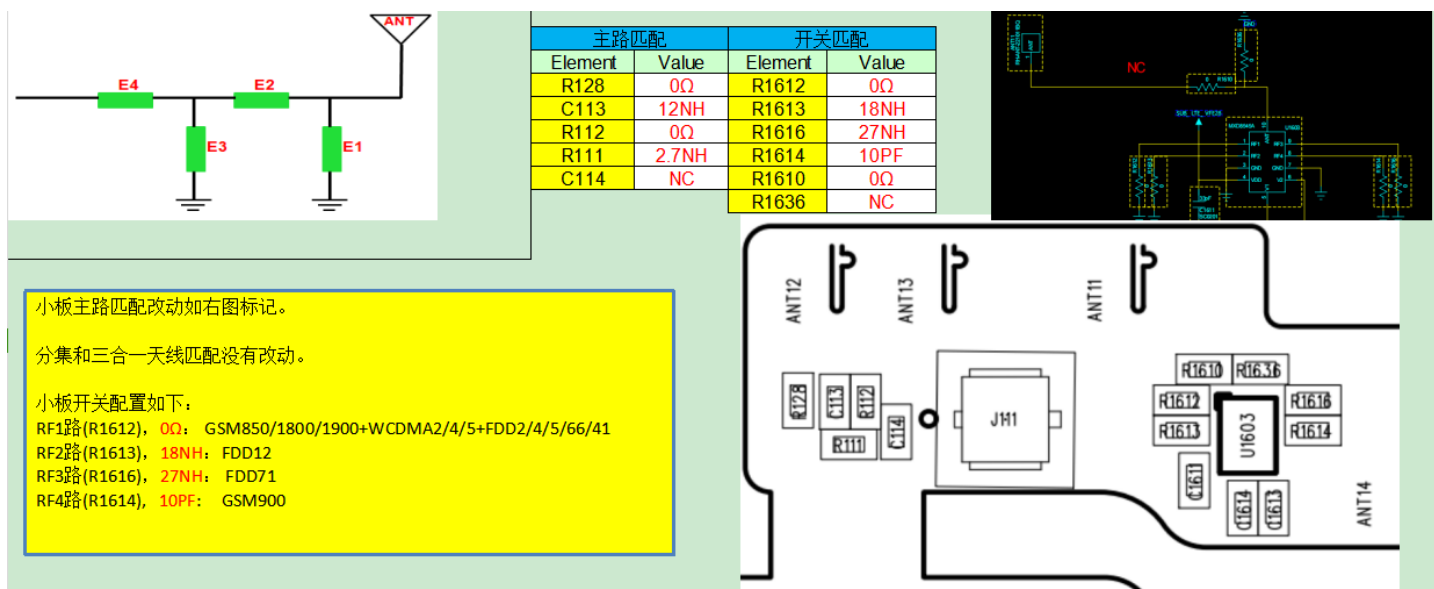


2、Electrical performance

1.Specifications

The operating frequency band of C66B6 antenna is 617~960MHZ and 1710~2700MHZ, in which resonance occurs.

2.Matching circuit of antenna

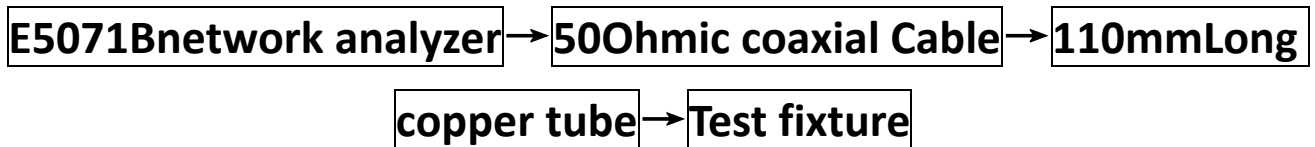


Structure of antenna: FPC

3、 Test of parameters

1.Test settings

The connection of VSWR test device is:



Treatment of test fixture:

Use a hard cable to lead out the SMA-J connector from the 50 ohm test point of the antenna on the mobile phone PCB, connect it to the copper tube with a choke, and then connect other devices in turn.

Passive parameters of main antenna:

工作频段(Working frequency band): 617~960MHZ, 1710~2700MHZ

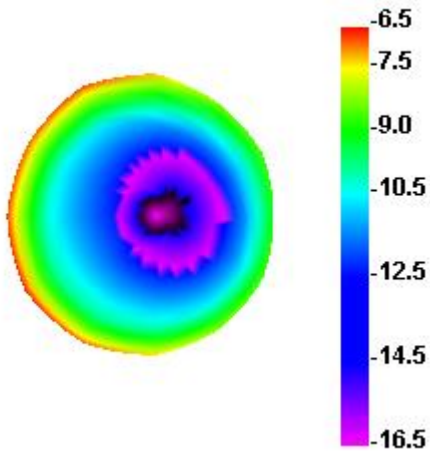
GSM850/900/1800/1900

WCDMA2/4/5

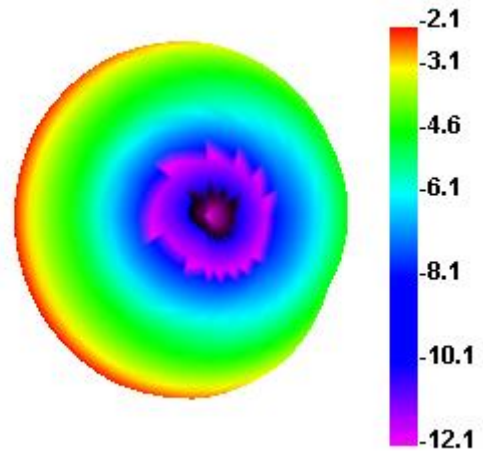
B2/4/5/12/17/66/71/41

Gain	
频段 Band	增益(dBi)
GSM850/WCDMA-B5/LTE-B5	-1.79
GSM900	0.98
DCS1800	1.13
PCS1900/WCDMA-B2/LTE-B2	0.98
WCDMA-B4/LTE-B4/66	1.06
LTE-B12/17	-2.03
LTE-B71	-5.71
LTE-B41	-2.35
GPS	4.31
2.4G WIFI/BT	1.57
5G WIFI	2.00

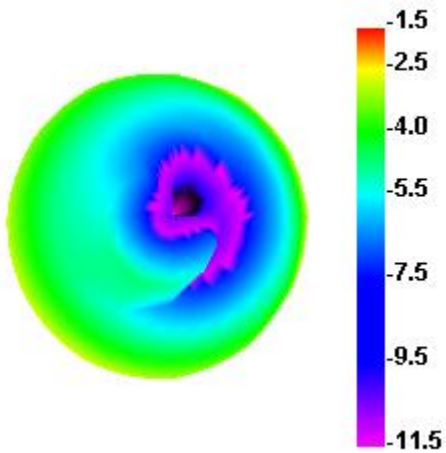
630.000MHz



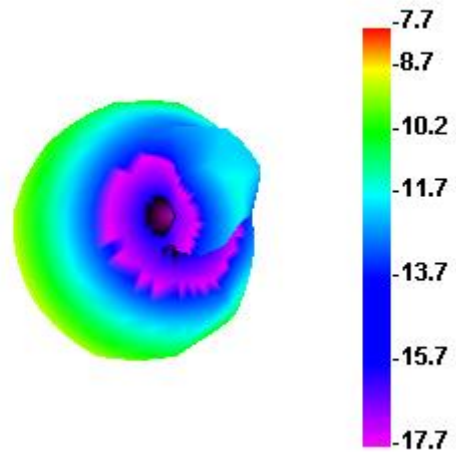
750.000MHz



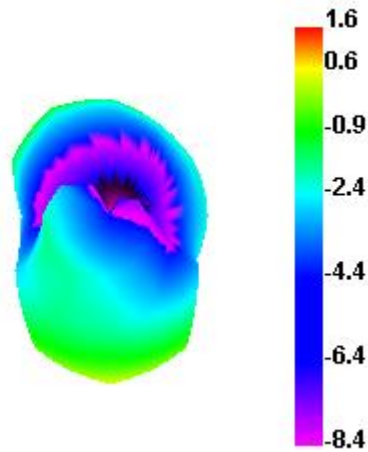
820.000MHz



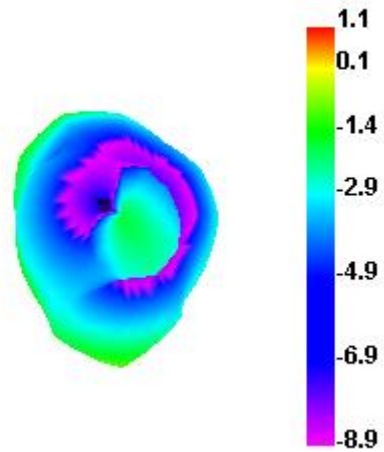
900.000MHz



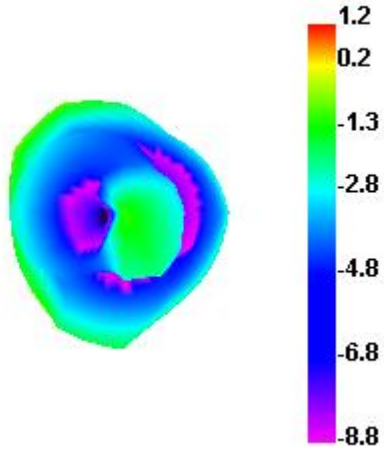
1710.000MHz



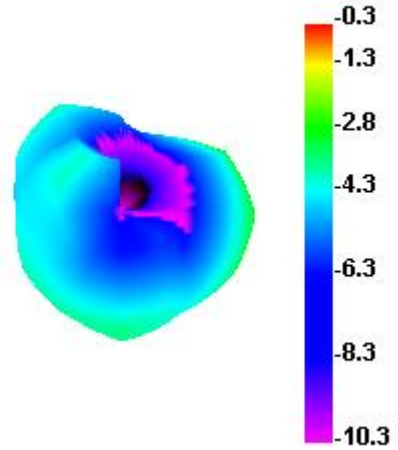
1800.000MHz



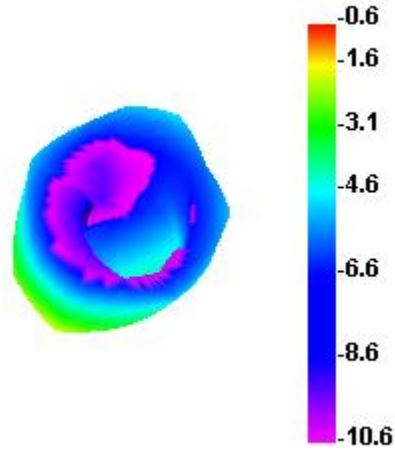
1900.000MHz



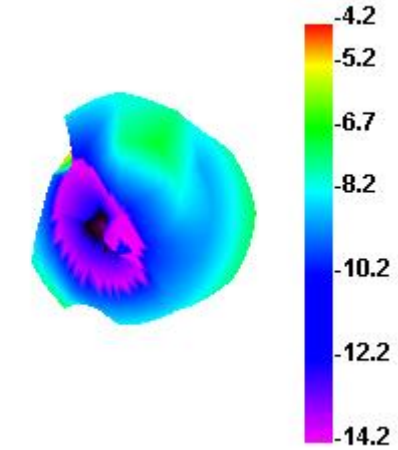
2100.000MHz



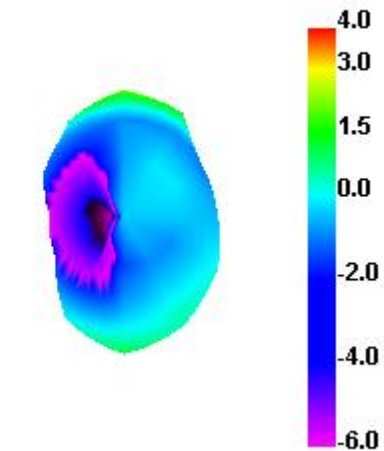
2500.000MHz



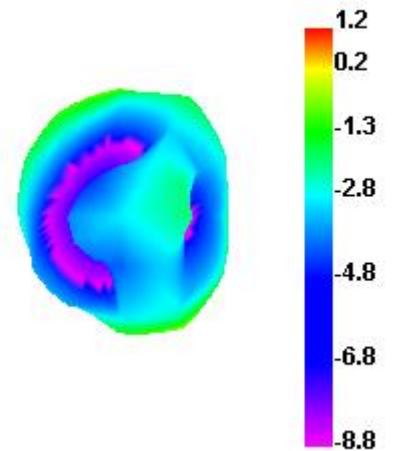
2690.000MHz



5550.000MHz



2400.000MHz



WIFI/BT Antenna Gain:

Passive Test for 2.4G&5G			
Frequency (MHz)	Effi (%)	Effi (dB)	Gain (dBi)
2400.00	35.91	-7.32	0.57
2410.00	32.42	-8.62	0.34
2420.00	31.27	-8.32	0.63
2430.00	36.26	-8.12	0.84
2440.00	35.37	-8.63	0.88
2450.00	32.18	-8.61	0.69
2460.00	34.53	-7.21	0.81
2470.00	31.58	-8.01	0.61
2480.00	31.70	-9.03	0.69
2490.00	35.59	-9.14	0.71
2500.00	32.21	-9.04	1.57
5100.00	53.35	-8.21	1.69
5150.00	45.13	-9.31	1.64
5200.00	49.65	-8.62	1.53
5250.00	45.38	-6.31	1.48
5300.00	50.79	-5.63	1.52
5350.00	46.14	-7.62	1.14
5400.00	53.15	-8.63	1.86
5450.00	50.75	-7.63	1.85
5500.00	52.33	-8.62	1.69
5550.00	52.27	-8.62	1.52
5600.00	52.70	-7.82	1.03
5650.00	50.77	-8.63	1.65
5700.00	52.23	-9.12	1.03
5750.00	51.72	-8.52	1.95
5800.00	45.15	-10.61	2.00
5850.00	52.59	-8.36	1.87