



REPORT No.: SZ22060386S02

## Annex D Plots of Maximum RF Test Results

## HAC RF\_GSM850\_GSM Voice\_Ch128\_E

Communication System: UID 10021 - DAB, GSM-FDD (TDMA, GMSK); Frequency: 824.2 MHz; Duty Cycle: 1:8.6896

Medium: Air Medium parameters used:  $\sigma = 0$  S/m,  $\epsilon_r = 1$ ;  $\rho = 0$  kg/m<sup>3</sup>

Ambient Temperature : 23.2 °C

### DASY5 Configuration:

- Probe: ER3DV6 - SN2434; ConvF(1, 1, 1); Calibrated: 2022.03.04;
- Sensor-Surface: (Fix Surface), Sensor-Surface: 0mm (Fix Surface)
- Electronics: DAE4 Sn1643; Calibrated: 2021.12.30
- Phantom: HAC Test Arch with AMCC; Type: SD HAC P01 BA;
- Measurement SW: DASY52, Version 52.8 (8); SEMCAD X Version 14.6.10 (7331)

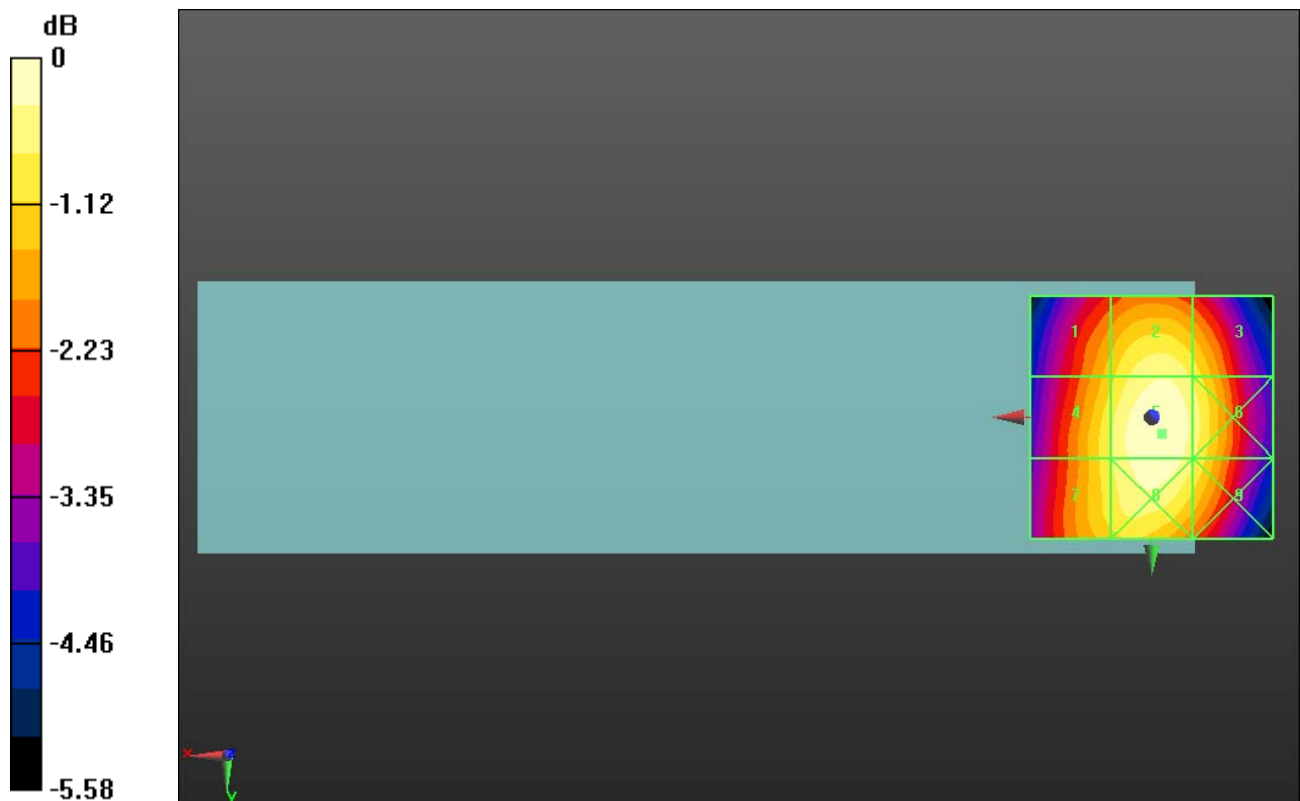
**Ch128/Hearing Aid Compatibility Test (101x101x1):** Interpolated grid: dx=0.5000 mm, dy=0.5000 mm

Total = 38.35 dBV/m

E Category: M4

Location: -2, 3.5, 8.7 mm

Maximum value of Total (interpolated) = 82.70 V/m



0 dB = 82.70 V/m = 38.35 dBV/m

## HAC RF\_GSM850\_GSM Voice\_Ch189\_E

Communication System: UID 10021 - DAB, GSM-FDD (TDMA, GMSK); Frequency: 836.6 MHz; Duty Cycle: 1:8.6896

Medium: Air Medium parameters used:  $\sigma = 0$  S/m,  $\epsilon_r = 1$ ;  $\rho = 0$  kg/m<sup>3</sup>

Ambient Temperature : 23.2 °C

DASY5 Configuration:

- Probe: ER3DV6 - SN2434; ConvF(1, 1, 1); Calibrated: 2022.03.04;
- Sensor-Surface: (Fix Surface), Sensor-Surface: 0mm (Fix Surface)
- Electronics: DAE4 Sn1643; Calibrated: 2021.12.30
- Phantom: HAC Test Arch with AMCC; Type: SD HAC P01 BA;
- Measurement SW: DASY52, Version 52.8 (8); SEMCAD X Version 14.6.10 (7331)

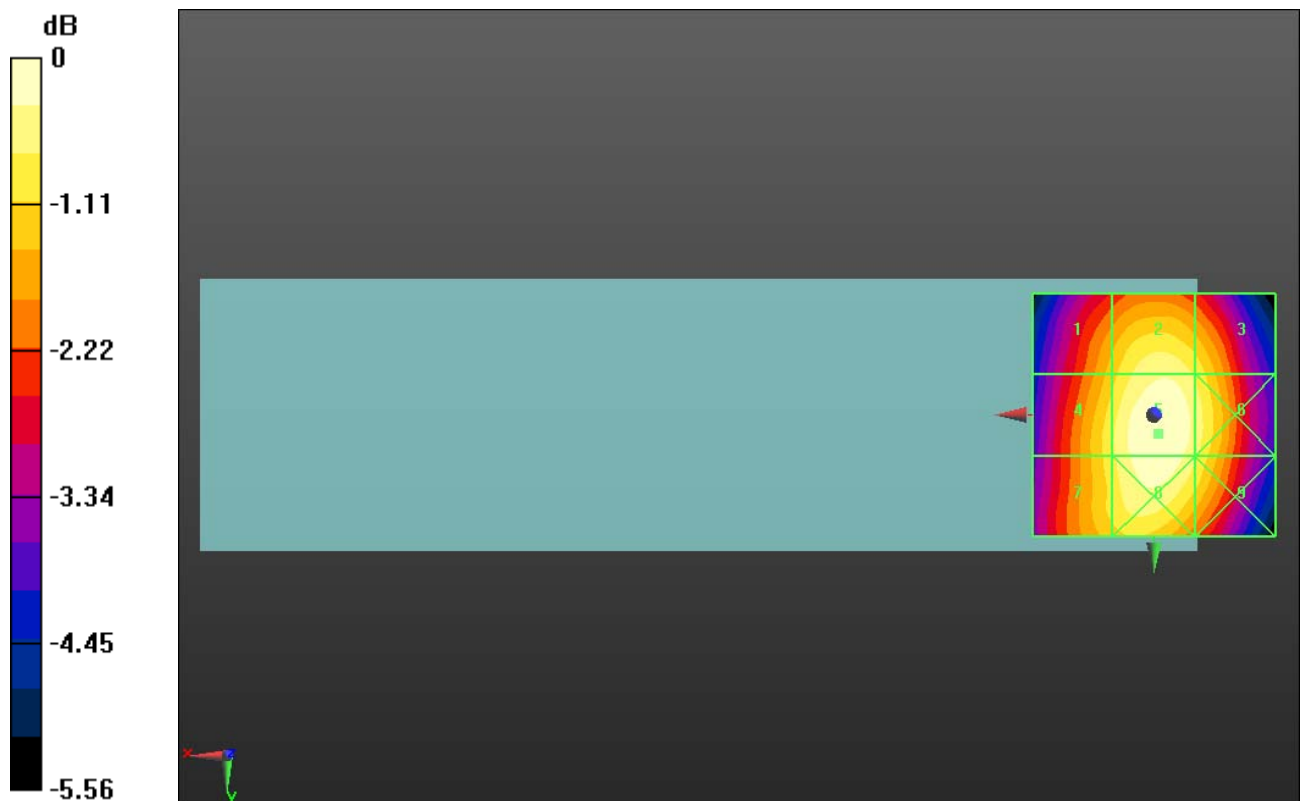
**Ch189/Hearing Aid Compatibility Test (101x101x1):** Interpolated grid: dx=0.5000 mm, dy=0.5000 mm

Total = 38.31 dBV/m

E Category: M4

Location: -1, 4, 8.7 mm

Maximum value of Total (interpolated) = 82.35 V/m



0 dB = 82.35 V/m = 38.31 dBV/m

### HAC RF\_GSM850\_GSM Voice\_Ch251\_E

Communication System: UID 10021 - DAB, GSM-FDD (TDMA, GMSK); Frequency: 848.6 MHz; Duty Cycle: 1:8.6896

Medium: Air Medium parameters used:  $\sigma = 0$  S/m,  $\epsilon_r = 1$ ;  $\rho = 0$  kg/m<sup>3</sup>

Ambient Temperature : 23.2 °C

#### DASY5 Configuration:

- Probe: ER3DV6 - SN2434; ConvF(1, 1, 1); Calibrated: 2022.03.04;
- Sensor-Surface: (Fix Surface), Sensor-Surface: 0mm (Fix Surface)
- Electronics: DAE4 Sn1643; Calibrated: 2021.12.30
- Phantom: HAC Test Arch with AMCC; Type: SD HAC P01 BA;
- Measurement SW: DASY52, Version 52.8 (8); SEMCAD X Version 14.6.10 (7331)

**Ch251/Hearing Aid Compatibility Test (101x101x1):** Interpolated grid: dx=0.5000 mm, dy=0.5000 mm  
Total = 37.21 dBV/m  
E Category: M4  
Location: -1, 3.5, 8.7 mm  
Maximum value of Total (interpolated) = 72.50 V/m



0 dB = 72.50 V/m = 37.21 dBV/m

### HAC RF\_GSM1900\_GSM Voice\_Ch512\_E

Communication System: UID 10021 - DAB, GSM-FDD (TDMA, GMSK); Frequency: 1850.2 MHz; Duty Cycle: 1:8.6896

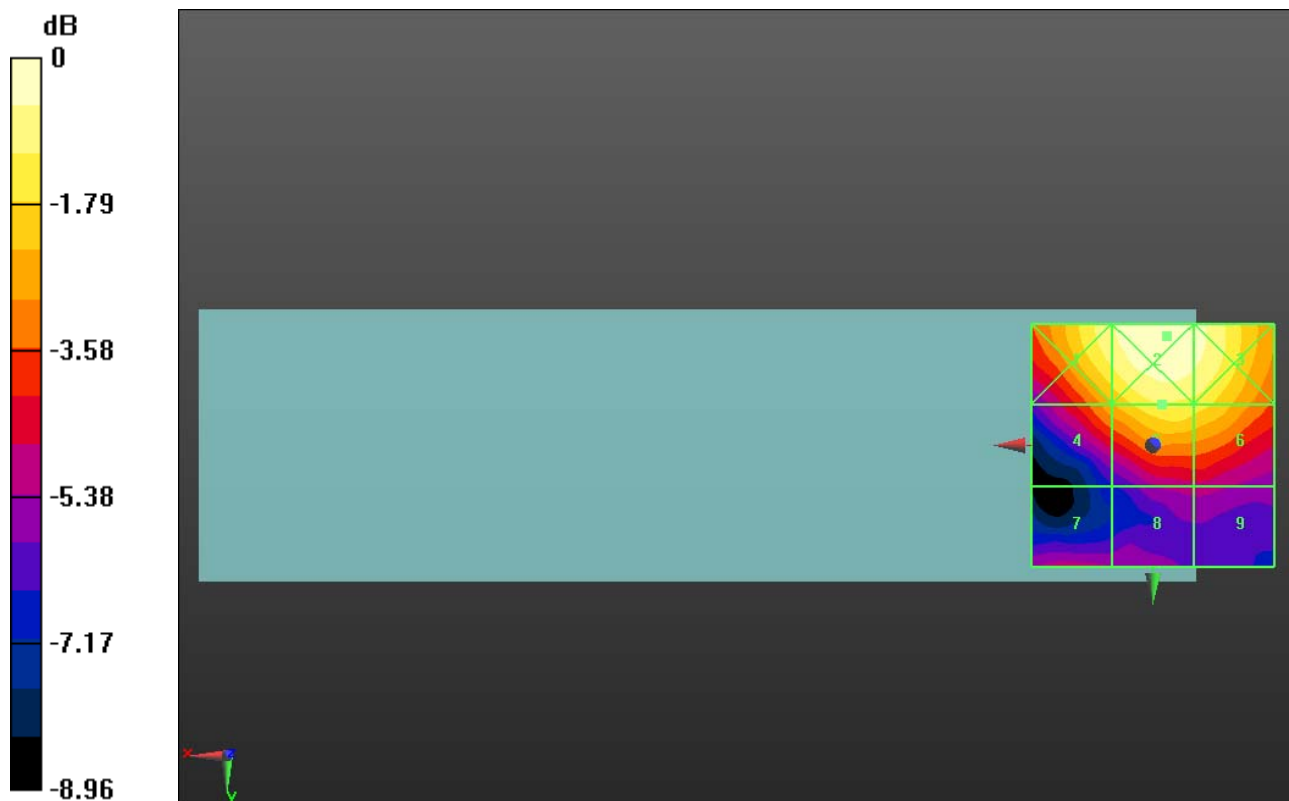
Medium: Air Medium parameters used:  $\sigma = 0$  S/m,  $\epsilon_r = 1$ ;  $\rho = 0$  kg/m<sup>3</sup>

Ambient Temperature : 23.2 °C

#### DASY5 Configuration:

- Probe: ER3DV6 - SN2434; ConvF(1, 1, 1); Calibrated: 2022.03.04;
- Sensor-Surface: (Fix Surface), Sensor-Surface: 0mm (Fix Surface)
- Electronics: DAE4 Sn1643; Calibrated: 2021.12.30
- Phantom: HAC Test Arch with AMCC; Type: SD HAC P01 BA;
- Measurement SW: DASY52, Version 52.8 (8); SEMCAD X Version 14.6.10 (7331)

**Ch512/Hearing Aid Compatibility Test (101x101x1):** Interpolated grid: dx=0.5000 mm, dy=0.5000 mm  
Total = 27.11 dBV/m  
E Category: M4  
Location: -3, -22.5, 8.7 mm  
Maximum value of Total (interpolated) = 22.67 V/m



0 dB = 22.67 V/m = 27.11 dBV/m

## HAC RF\_GSM1900\_GSM Voice\_Ch661\_E

Communication System: UID 10021 - DAB, GSM-FDD (TDMA, GMSK); Frequency: 1880 MHz; Duty Cycle: 1:8.6896

Medium: Air Medium parameters used:  $\sigma = 0$  S/m,  $\epsilon_r = 1$ ;  $\rho = 0$  kg/m<sup>3</sup>

Ambient Temperature : 23.2 °C

DASY5 Configuration:

- Probe: ER3DV6 - SN2434; ConvF(1, 1, 1); Calibrated: 2022.03.04;
- Sensor-Surface: (Fix Surface), Sensor-Surface: 0mm (Fix Surface)
- Electronics: DAE4 Sn1643; Calibrated: 2021.12.30
- Phantom: HAC Test Arch with AMCC; Type: SD HAC P01 BA;
- Measurement SW: DASY52, Version 52.8 (8); SEMCAD X Version 14.6.10 (7331)

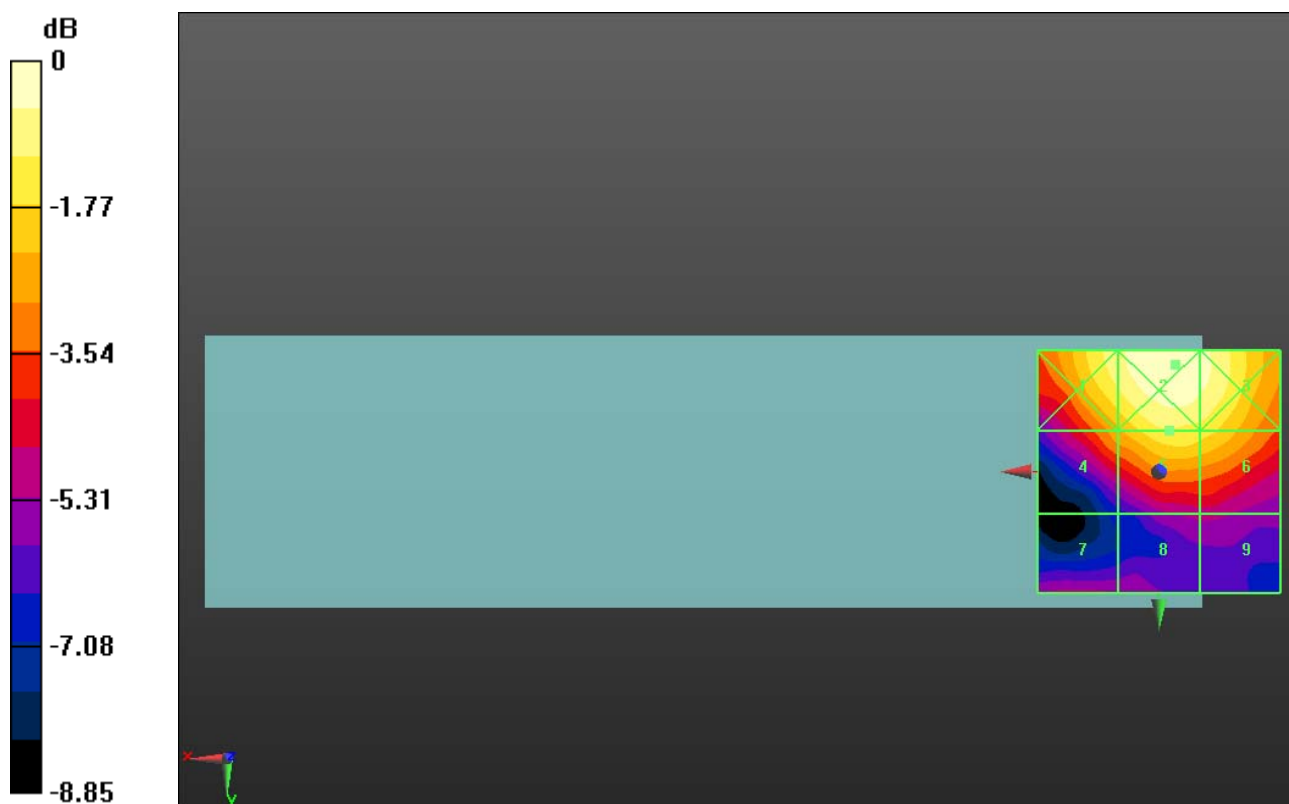
**Ch661/Hearing Aid Compatibility Test (101x101x1):** Interpolated grid: dx=0.5000 mm, dy=0.5000 mm

Total = 27.16 dBV/m

E Category: M4

Location: -3.5, -22, 8.7 mm

Maximum value of Total (interpolated) = 22.80 V/m



0 dB = 22.80 V/m = 27.16 dBV/m

## HAC RF\_GSM1900\_GSM Voice\_Ch810\_E

Communication System: UID 10021 - DAB, GSM-FDD (TDMA, GMSK); Frequency: 1909.8 MHz; Duty Cycle: 1:8.6896

Medium: Air Medium parameters used:  $\sigma = 0$  S/m,  $\epsilon_r = 1$ ;  $\rho = 0$  kg/m<sup>3</sup>

Ambient Temperature : 23.2 °C

DASY5 Configuration:

- Probe: ER3DV6 - SN2434; ConvF(1, 1, 1); Calibrated: 2022.03.04;
- Sensor-Surface: (Fix Surface), Sensor-Surface: 0mm (Fix Surface)
- Electronics: DAE4 Sn1643; Calibrated: 2021.12.30
- Phantom: HAC Test Arch with AMCC; Type: SD HAC P01 BA;
- Measurement SW: DASY52, Version 52.8 (8); SEMCAD X Version 14.6.10 (7331)

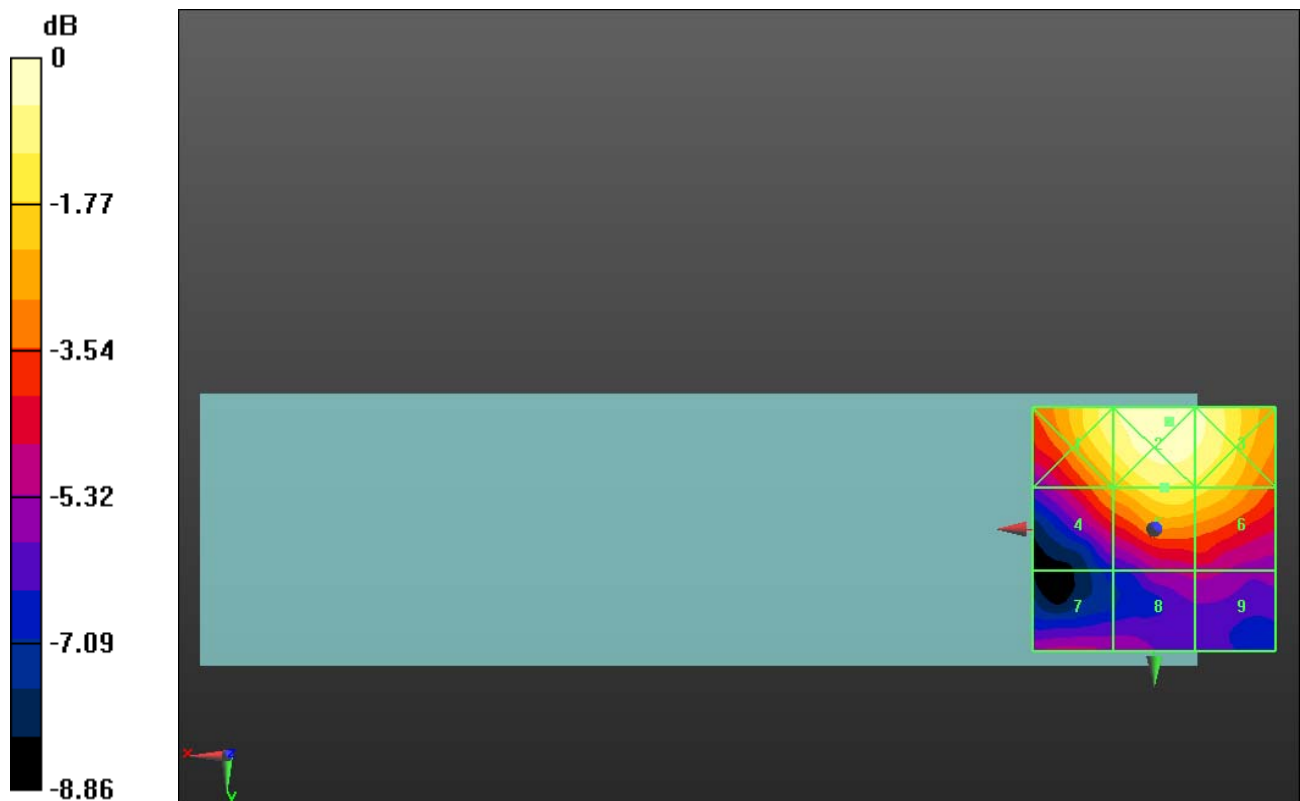
**Ch810/Hearing Aid Compatibility Test (101x101x1):** Interpolated grid: dx=0.5000 mm, dy=0.5000 mm

Total = 27.15 dBV/m

E Category: M4

Location: -3, -22, 8.7 mm

Maximum value of Total (interpolated) = 22.78 V/m



0 dB = 22.78 V/m = 27.15 dBV/m

### HAC RF\_LTE Band 41(HPUE)\_20M\_QPSK\_1RB\_0offset\_12.2Kbps\_Ch39750\_E

Communication System: UID 10172 - CAB, LTE-TDD (SC-FDMA, 1 RB, 20 MHz, QPSK);  
Frequency: 2506 MHz; Duty Cycle: 1:8.33681

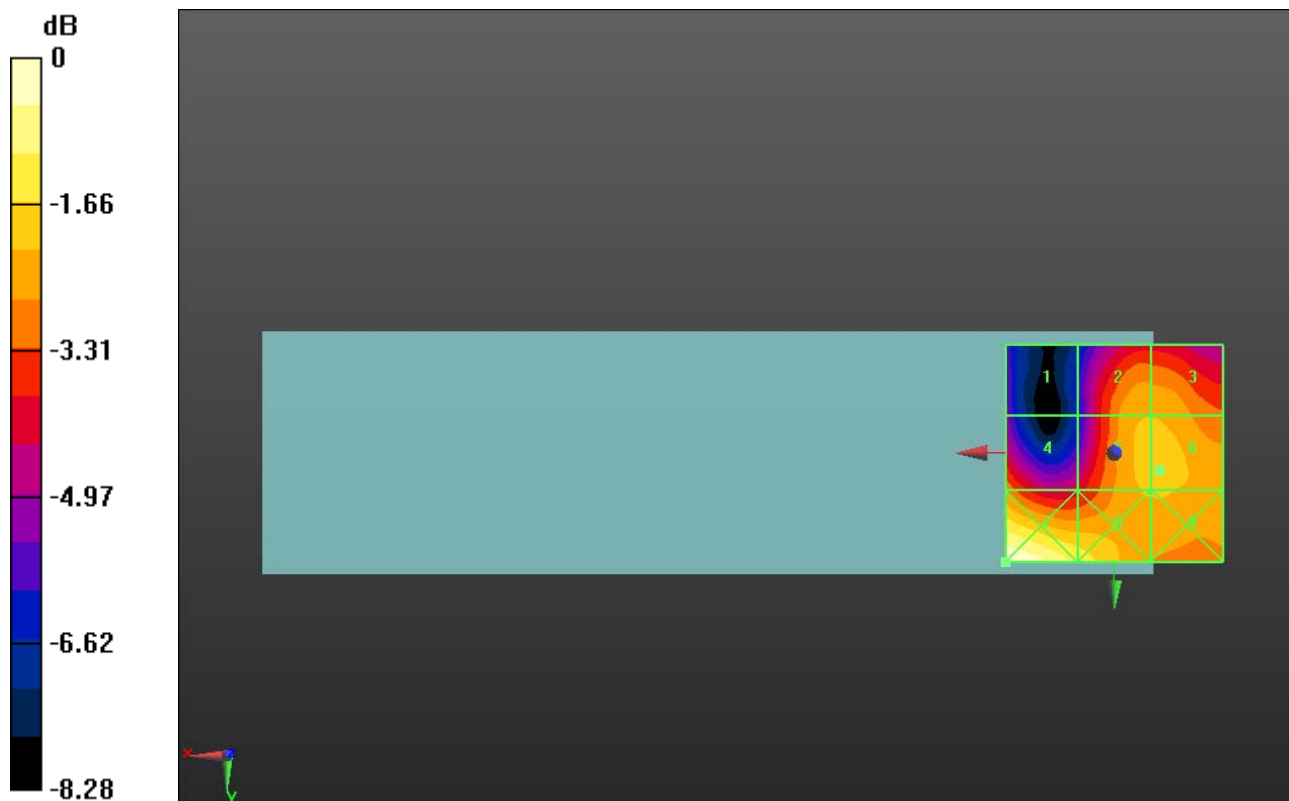
Medium: Air Medium parameters used:  $\sigma = 0$  S/m,  $\epsilon_r = 1$ ;  $\rho = 0$  kg/m<sup>3</sup>

Ambient Temperature : 23.2 °C

#### DASY5 Configuration:

- Probe: ER3DV6 - SN2434; ConvF(1, 1, 1); Calibrated: 2022.03.04;
- Sensor-Surface: (Fix Surface), Sensor-Surface: 0mm (Fix Surface)
- Electronics: DAE4 Sn1643; Calibrated: 2021.12.30
- Phantom: HAC Test Arch with AMCC; Type: SD HAC P01 BA;
- Measurement SW: DASY52, Version 52.8 (8); SEMCAD X Version 14.6.10 (7331)

**Ch39750/Hearing Aid Compatibility Test (101x101x1):** Interpolated grid: dx=0.5000 mm, dy=0.5000 mm  
Total = 24.73 dBV/m  
E Category: M4  
Location: 25, 25, 8.7 mm  
Maximum value of Total (interpolated) = 17.24 V/m



0 dB = 17.24 V/m = 24.73 dBV/m



### HAC RF\_LTE Band 41(HPUE)\_20M\_QPSK\_1RB\_0offset\_12.2Kbps\_Ch40185\_E

Communication System: UID 10237 - CAB, LTE-TDD (SC-FDMA, 1 RB, 10 MHz, QPSK);

Frequency: 2549.5 MHz; Duty Cycle: 1:8.33681

Medium: Air Medium parameters used:  $\sigma = 0$  S/m,  $\epsilon_r = 1$ ;  $\rho = 0$  kg/m<sup>3</sup>

Ambient Temperature : 23.2 °C; Liquid Temperature : 22.1 °C

DASY5 Configuration:

- Probe: ER3DV6 - SN2434; ConvF(1, 1, 1); Calibrated: 2022.03.04;

- Sensor-Surface: (Fix Surface), Sensor-Surface: 0mm (Fix Surface)

- Electronics: DAE4 Sn1643; Calibrated: 2021.12.30

- Phantom: HAC Test Arch with AMCC; Type: SD HAC P01 BA;

- Measurement SW: DASY52, Version 52.8 (8); SEMCAD X Version 14.6.10 (7331)

**Ch40185/Hearing Aid Compatibility Test (101x101x1):** Interpolated grid: dx=0.5000 mm,

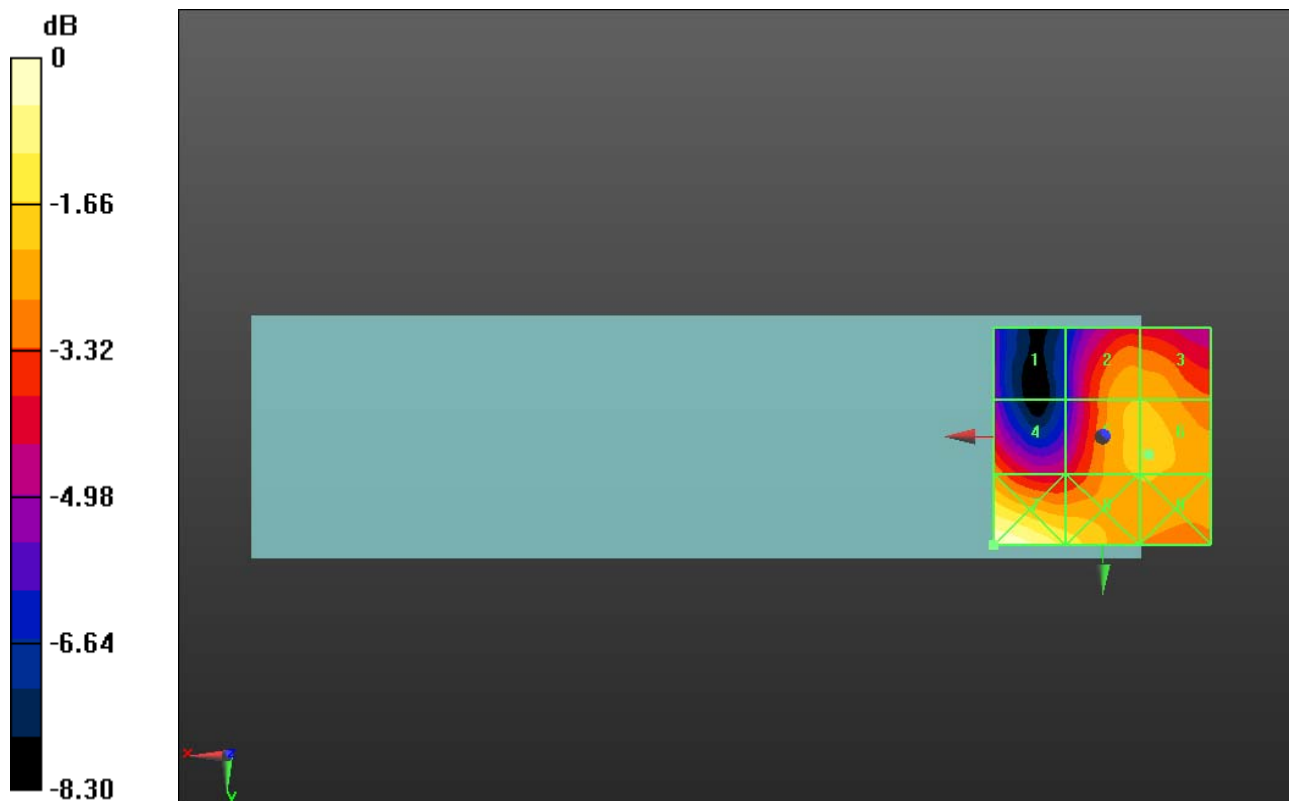
dy=0.5000 mm

Total = 24.73 dBV/m

E Category: M4

Location: 25, 25, 8.7 mm

Maximum value of Total (interpolated) = 17.24 V/m



0 dB = 17.24 V/m = 24.73 dBV/m

### HAC RF\_LTE Band 41(HPUE)\_20M\_QPSK\_1RB\_0offset\_12.2Kbps\_Ch40620\_E

Communication System: UID 10172 - CAB, LTE-TDD (SC-FDMA, 1 RB, 20 MHz, QPSK);

Frequency: 2593 MHz; Duty Cycle: 1:8.33681

Medium: Air Medium parameters used:  $\sigma = 0$  S/m,  $\epsilon_r = 1$ ;  $\rho = 0$  kg/m<sup>3</sup>

Ambient Temperature : 23.2 °C

DASY5 Configuration:

- Probe: ER3DV6 - SN2434; ConvF(1, 1, 1); Calibrated: 2022.03.04;

- Sensor-Surface: (Fix Surface), Sensor-Surface: 0mm (Fix Surface)

- Electronics: DAE4 Sn1643; Calibrated: 2021.34.52

- Phantom: HAC Test Arch with AMCC; Type: SD HAC P01 BA;

- Measurement SW: DASY52, Version 52.8 (8); SEMCAD X Version 14.6.10 (7331)

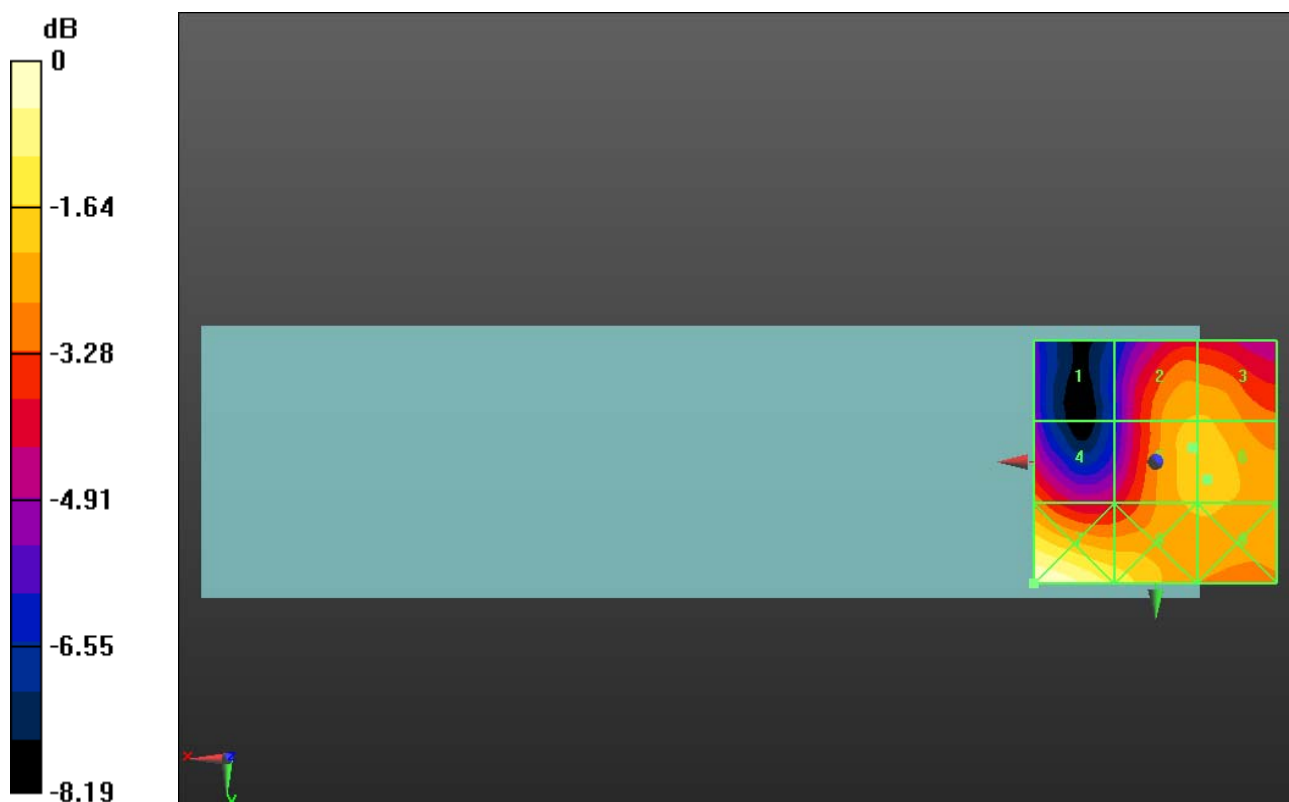
**Ch40620/Hearing Aid Compatibility Test (101x101x1):** Interpolated grid: dx=0.5000 mm, dy=0.5000 mm

Total = 24.71 dBV/m

E Category: M4

Location: 25, 25, 8.7 mm

Maximum value of Total (interpolated) = 17.20 V/m



0 dB = 17.20 V/m = 24.71 dBV/m

### HAC RF\_LTE Band 41(HPUE)\_20M\_QPSK\_1RB\_0offset\_12.2Kbps\_Ch41055\_E

Communication System: UID 10172 - CAB, LTE-TDD (SC-FDMA, 1 RB, 20 MHz, QPSK);  
Frequency: 2636.5 MHz; Duty Cycle: 1:8.33681

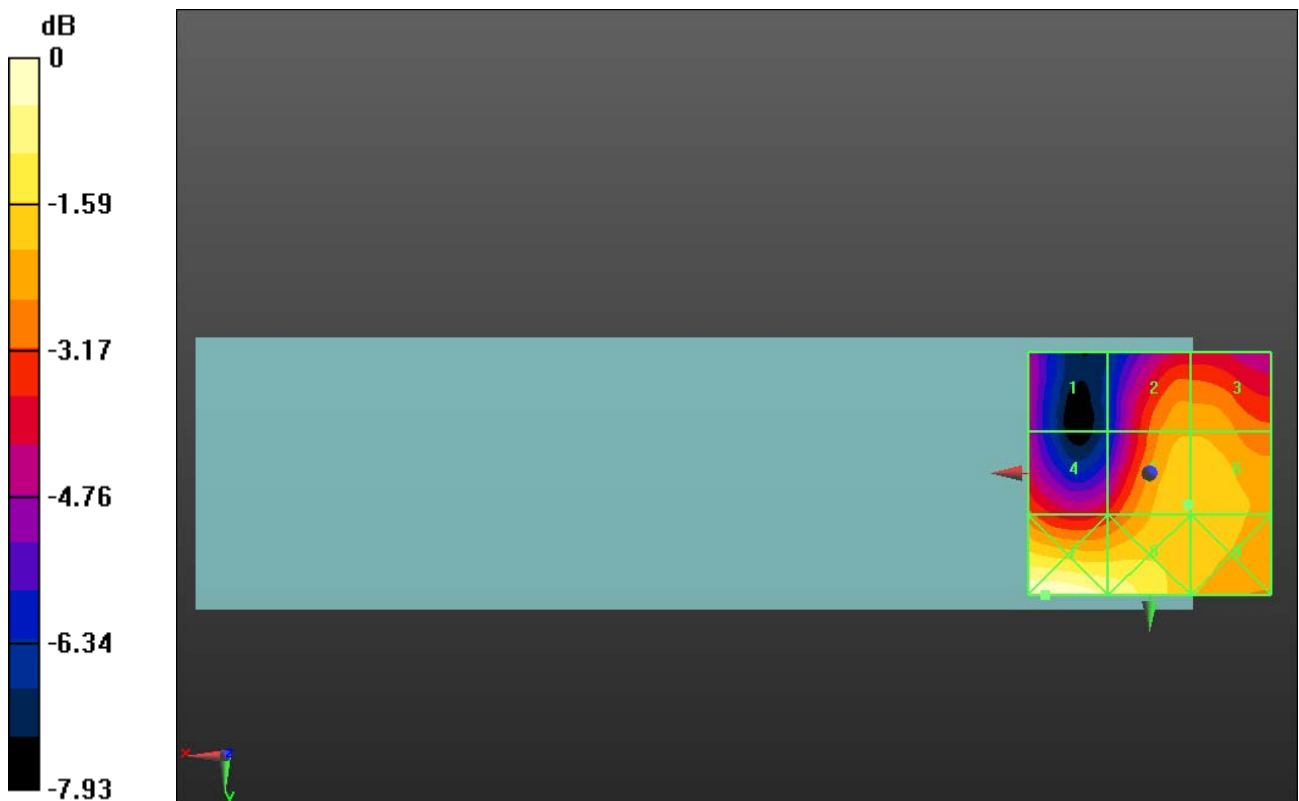
Medium: Air Medium parameters used:  $\sigma = 0$  S/m,  $\epsilon_r = 1$ ;  $\rho = 0$  kg/m<sup>3</sup>

Ambient Temperature : 23.2 °C

#### DASY5 Configuration:

- Probe: ER3DV6 - SN2434; ConvF(1, 1, 1); Calibrated: 2022.03.04;
- Sensor-Surface: (Fix Surface), Sensor-Surface: 0mm (Fix Surface)
- Electronics: DAE4 Sn1643; Calibrated: 2021.12.30
- Phantom: HAC Test Arch with AMCC; Type: SD HAC P01 BA;
- Measurement SW: DASY52, Version 52.8 (8); SEMCAD X Version 14.6.10 (7331)

**Ch41055/Hearing Aid Compatibility Test (101x101x1):** Interpolated grid: dx=0.5000 mm, dy=0.5000 mm  
Total = 24.49 dBV/m  
E Category: M4  
Location: 21.5, 25, 8.7 mm  
Maximum value of Total (interpolated) = 16.77 V/m



0 dB = 16.77 V/m = 24.49 dBV/m

### HAC RF\_LTE Band 41(HPUE)\_20M\_QPSK\_1RB\_0offset\_12.2Kbps\_Ch41490\_E

Communication System: UID 10172 - CAB, LTE-TDD (SC-FDMA, 1 RB, 20 MHz, QPSK);  
Frequency: 2680 MHz; Duty Cycle: 1:8.33681

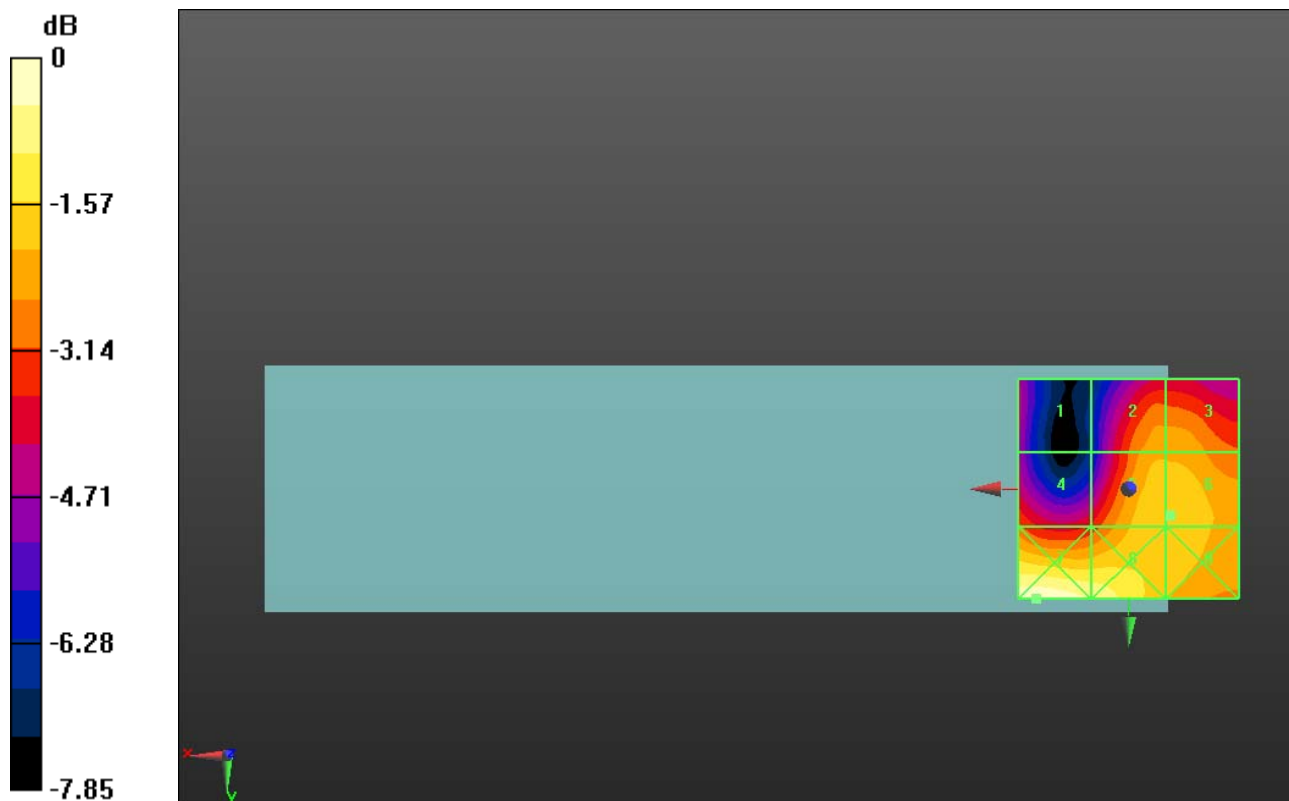
Medium: Air Medium parameters used:  $\sigma = 0$  S/m,  $\epsilon_r = 1$ ;  $\rho = 0$  kg/m<sup>3</sup>

Ambient Temperature : 23.2 °C

DASY5 Configuration:

- Probe: ER3DV6 - SN2434; ConvF(1, 1, 1); Calibrated: 2022.03.04;
- Sensor-Surface: (Fix Surface), Sensor-Surface: 0mm (Fix Surface)
- Electronics: DAE4 Sn1643; Calibrated: 2021.12.30
- Phantom: HAC Test Arch with AMCC; Type: SD HAC P01 BA;
- Measurement SW: DASY52, Version 52.8 (8); SEMCAD X Version 14.6.10 (7331)

**Ch41490/Hearing Aid Compatibility Test (101x101x1):** Interpolated grid: dx=0.5000 mm, dy=0.5000 mm  
Total = 24.49 dBV/m  
E Category: M4  
Location: 21, 25, 8.7 mm  
Maximum value of Total (interpolated) = 16.76 V/m



0 dB = 16.76 V/m = 24.49 dBV/m

### HAC RF\_LTE Band 41\_20M\_QPSK\_1RB\_0offset\_12.2Kbps\_Ch39750\_E

Communication System: UID 10172 - CAB, LTE-TDD (SC-FDMA, 1 RB, 20 MHz, QPSK);  
Frequency: 2506 MHz; Duty Cycle: 1:8.33681

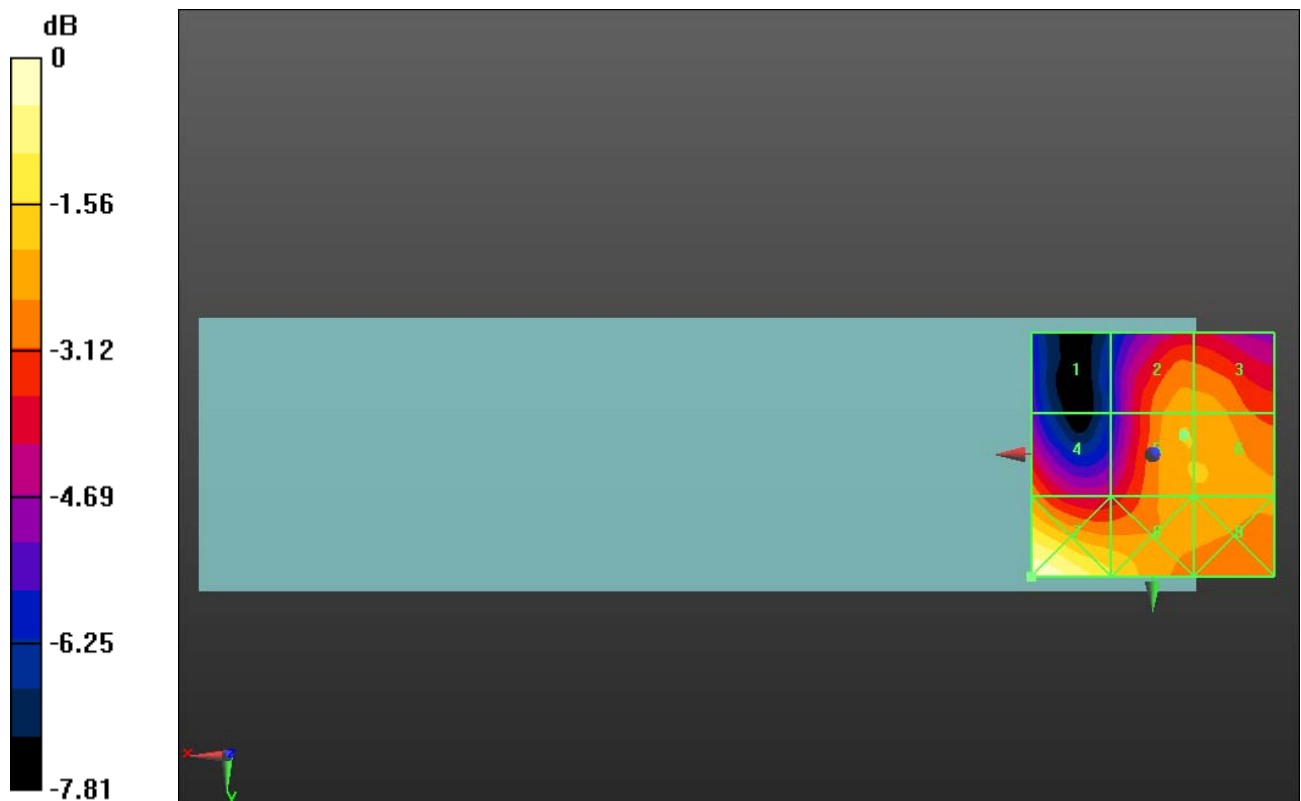
Medium: Air Medium parameters used:  $\sigma = 0$  S/m,  $\epsilon_r = 1$ ;  $\rho = 0$  kg/m<sup>3</sup>

Ambient Temperature : 23.2 °C

#### DASY5 Configuration:

- Probe: ER3DV6 - SN2434; ConvF(1, 1, 1); Calibrated: 2022.03.04;
- Sensor-Surface: (Fix Surface), Sensor-Surface: 0mm (Fix Surface)
- Electronics: DAE4 Sn1643; Calibrated: 2021.12.30
- Phantom: HAC Test Arch with AMCC; Type: SD HAC P01 BA;
- Measurement SW: DASY52, Version 52.8 (8); SEMCAD X Version 14.6.10 (7331)

**Ch39750/Hearing Aid Compatibility Test (101x101x1):** Interpolated grid: dx=0.5000 mm, dy=0.5000 mm  
Total = 23.69 dBV/m  
E Category: M4  
Location: 25, 25, 8.7 mm  
Maximum value of Total (interpolated) = 15.30 V/m



0 dB = 15.30 V/m = 23.69 dBV/m

### HAC RF\_LTE Band 41\_20M\_QPSK\_1RB\_0offset\_12.2Kbps\_Ch40185\_E

Communication System: UID 10237 - CAB, LTE-TDD (SC-FDMA, 1 RB, 10 MHz, QPSK);  
Frequency: 2549.5 MHz; Duty Cycle: 1:8.33681

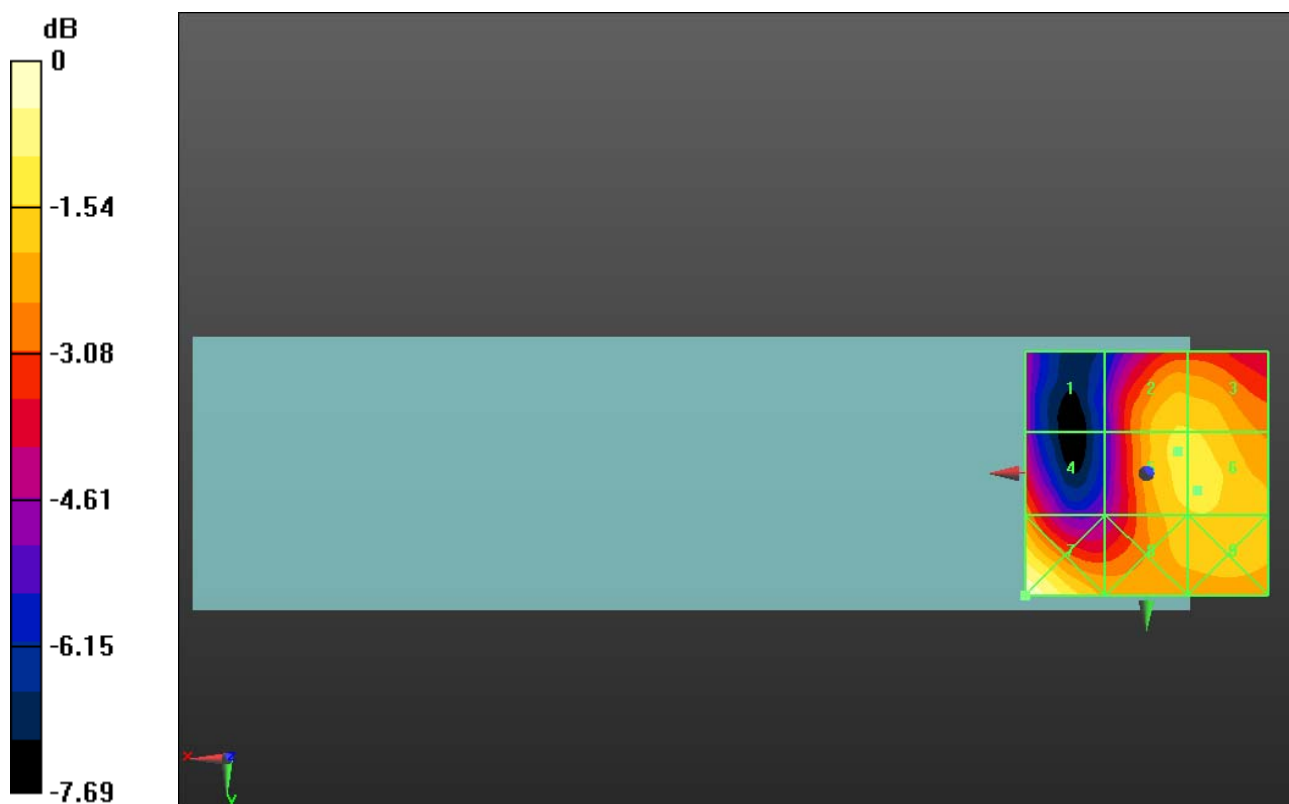
Medium: Air Medium parameters used:  $\sigma = 0$  S/m,  $\epsilon_r = 1$ ;  $\rho = 0$  kg/m<sup>3</sup>

Ambient Temperature : 23.2 °C

#### DASY5 Configuration:

- Probe: ER3DV6 - SN2434; ConvF(1, 1, 1); Calibrated: 2022.03.04;
- Sensor-Surface: (Fix Surface), Sensor-Surface: 0mm (Fix Surface)
- Electronics: DAE4 Sn1643; Calibrated: 2021.12.30
- Phantom: HAC Test Arch with AMCC; Type: SD HAC P01 BA;
- Measurement SW: DASY52, Version 52.8 (8); SEMCAD X Version 14.6.10 (7331)

**Ch40185/Hearing Aid Compatibility Test (101x101x1):** Interpolated grid: dx=0.5000 mm, dy=0.5000 mm  
Total = 23.00 dBV/m  
E Category: M4  
Location: 25, 25, 8.7 mm  
Maximum value of Total (interpolated) = 14.12 V/m



0 dB = 14.12 V/m = 23.00 dBV/m

### HAC RF\_LTE Band 41\_20M\_QPSK\_1RB\_0offset\_12.2Kbps\_Ch40620\_E

Communication System: UID 10172 - CAB, LTE-TDD (SC-FDMA, 1 RB, 20 MHz, QPSK);  
Frequency: 2593 MHz; Duty Cycle: 1:8.33681

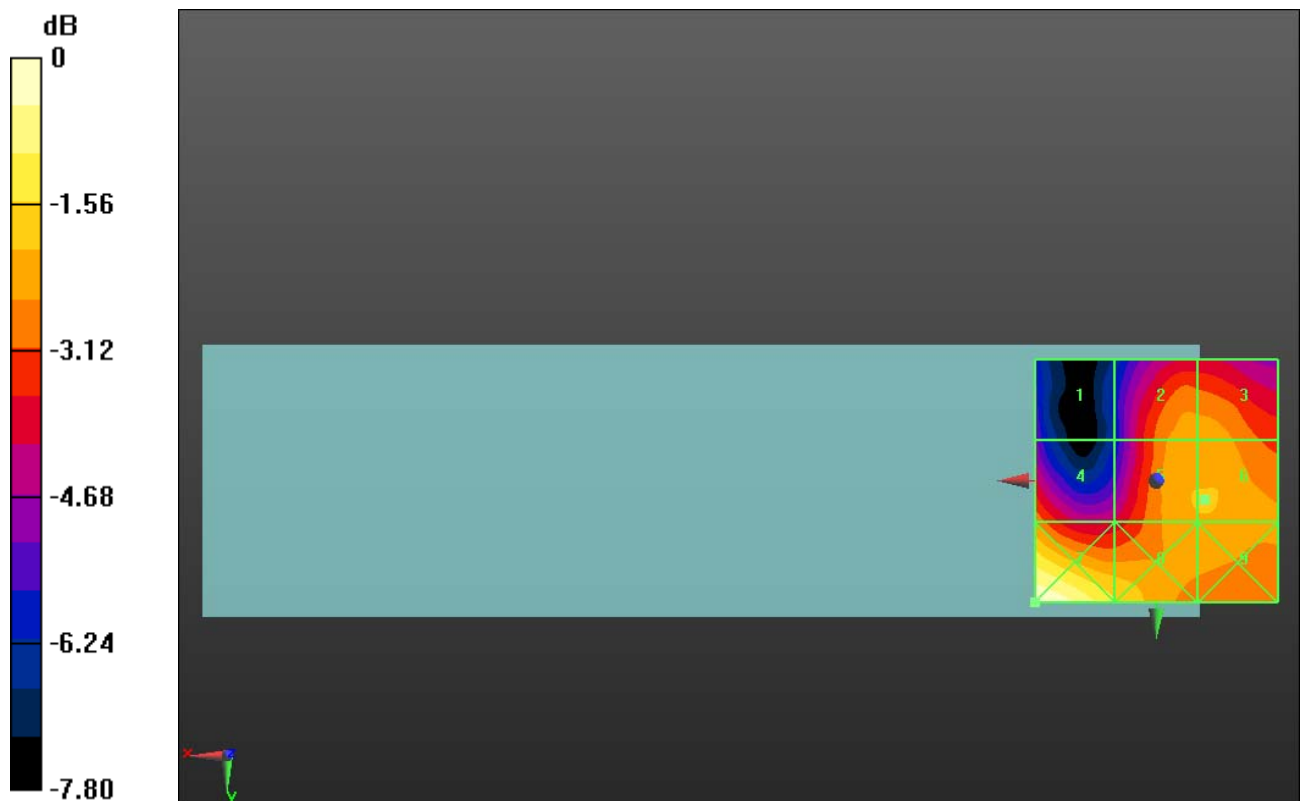
Medium: Air Medium parameters used:  $\sigma = 0$  S/m,  $\epsilon_r = 1$ ;  $\rho = 0$  kg/m<sup>3</sup>

Ambient Temperature : 23.2 °C

#### DASY5 Configuration:

- Probe: ER3DV6 - SN2434; ConvF(1, 1, 1); Calibrated: 2022.03.04;
- Sensor-Surface: (Fix Surface), Sensor-Surface: 0mm (Fix Surface)
- Electronics: DAE4 Sn1643; Calibrated: 2021.12.30
- Phantom: HAC Test Arch with AMCC; Type: SD HAC P01 BA;
- Measurement SW: DASY52, Version 52.8 (8); SEMCAD X Version 14.6.10 (7331)

**Ch40620/Hearing Aid Compatibility Test (101x101x1):** Interpolated grid: dx=0.5000 mm, dy=0.5000 mm  
Total = 23.69 dBV/m  
E Category: M4  
Location: 25, 25, 8.7 mm  
Maximum value of Total (interpolated) = 15.30 V/m



0 dB = 15.30 V/m = 23.69 dBV/m

### HAC RF\_LTE Band 41\_20M\_QPSK\_1RB\_0offset\_12.2Kbps\_Ch41055\_E

Communication System: UID 10172 - CAB, LTE-TDD (SC-FDMA, 1 RB, 20 MHz, QPSK);

Frequency: 2636.5 MHz; Duty Cycle: 1:8.33681

Medium: Air Medium parameters used:  $\sigma = 0$  S/m,  $\epsilon_r = 1$ ;  $\rho = 0$  kg/m<sup>3</sup>

Ambient Temperature : 23.2 °C

DASY5 Configuration:

- Probe: ER3DV6 - SN2434; ConvF(1, 1, 1); Calibrated: 2022.03.04;

- Sensor-Surface: (Fix Surface), Sensor-Surface: 0mm (Fix Surface)

- Electronics: DAE4 Sn1643; Calibrated: 2021.12.30

- Phantom: HAC Test Arch with AMCC; Type: SD HAC P01 BA;

- Measurement SW: DASY52, Version 52.8 (8); SEMCAD X Version 14.6.10 (7331)

**Ch41055/Hearing Aid Compatibility Test (101x101x1):** Interpolated grid: dx=0.5000 mm,

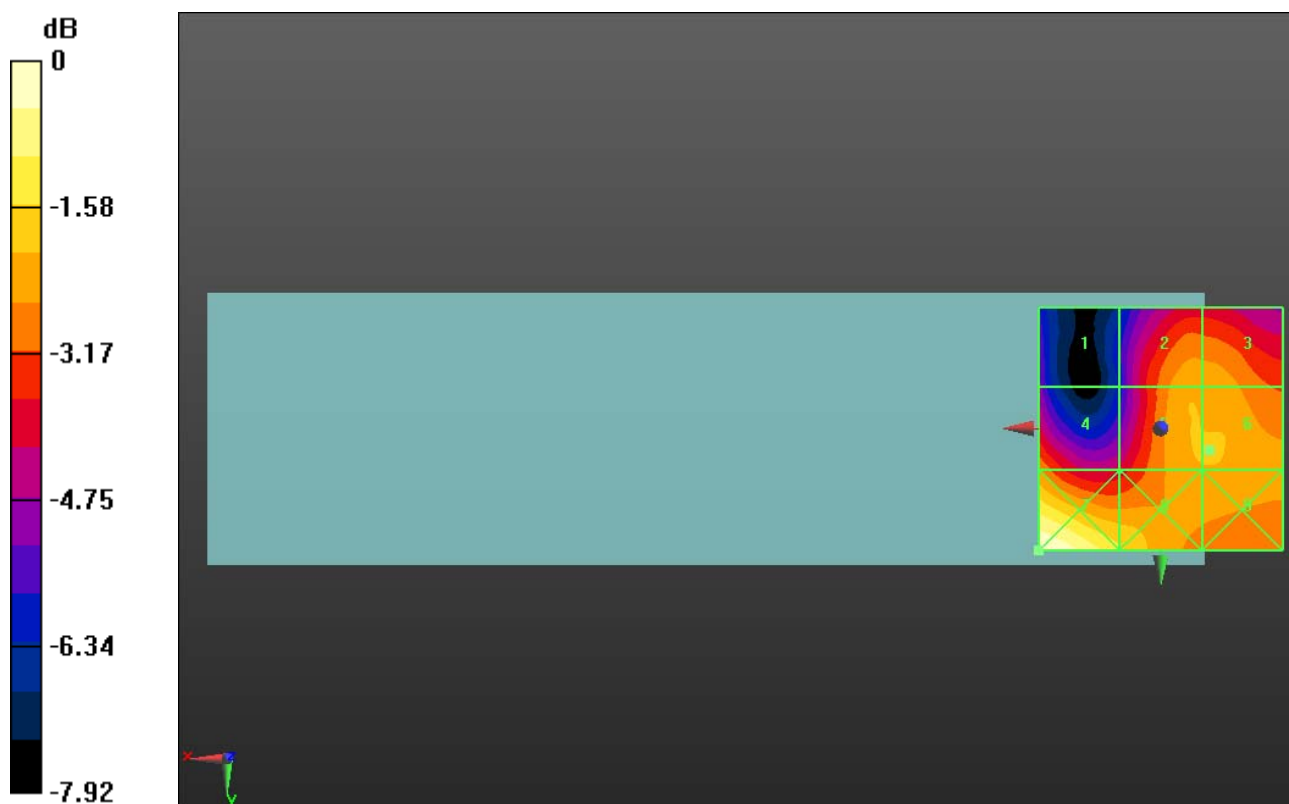
dy=0.5000 mm

Total = 23.72 dBV/m

E Category: M4

Location: 25, 25, 8.7 mm

Maximum value of Total (interpolated) = 15.34 V/m



0 dB = 15.34 V/m = 23.72 dBV/m



### HAC RF\_LTE Band 41\_20M\_QPSK\_1RB\_0offset\_12.2Kbps\_Ch41490\_E

Communication System: UID 10172 - CAB, LTE-TDD (SC-FDMA, 1 RB, 20 MHz, QPSK);  
Frequency: 2680 MHz; Duty Cycle: 1:8.33681

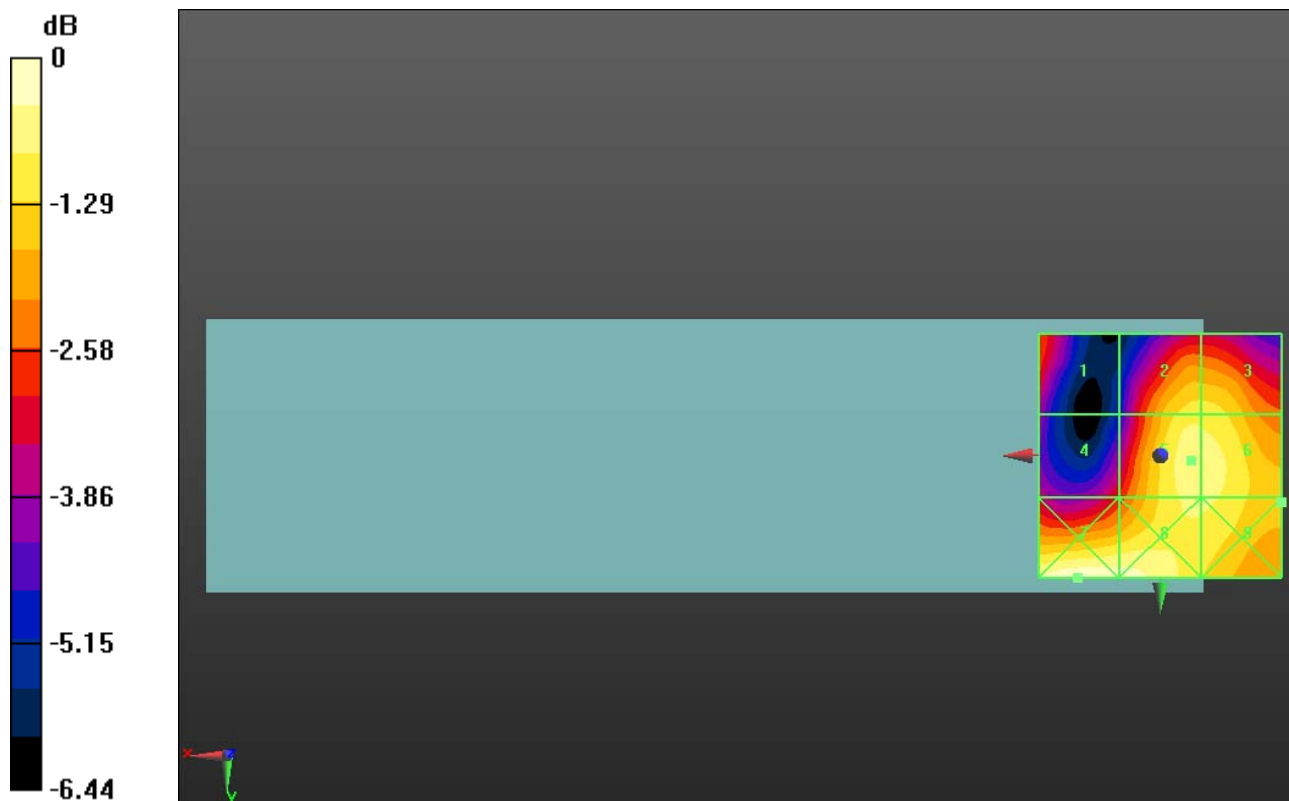
Medium: Air Medium parameters used:  $\sigma = 0$  S/m,  $\epsilon_r = 1$ ;  $\rho = 0$  kg/m<sup>3</sup>

Ambient Temperature : 23.2 °C

#### DASY5 Configuration:

- Probe: ER3DV6 - SN2434; ConvF(1, 1, 1); Calibrated: 2022.03.04;
- Sensor-Surface: (Fix Surface), Sensor-Surface: 0mm (Fix Surface)
- Electronics: DAE4 Sn1643; Calibrated: 2021.12.30
- Phantom: HAC Test Arch with AMCC; Type: SD HAC P01 BA;
- Measurement SW: DASY52, Version 52.8 (8); SEMCAD X Version 14.6.10 (7331)

**Ch41490/Hearing Aid Compatibility Test (101x101x1):** Interpolated grid: dx=0.5000 mm, dy=0.5000 mm  
Total = 23.07 dBV/m  
E Category: M4  
Location: 17, 25, 8.7 mm  
Maximum value of Total (interpolated) = 14.24 V/m



0 dB = 14.24 V/m = 23.07 dBV/m