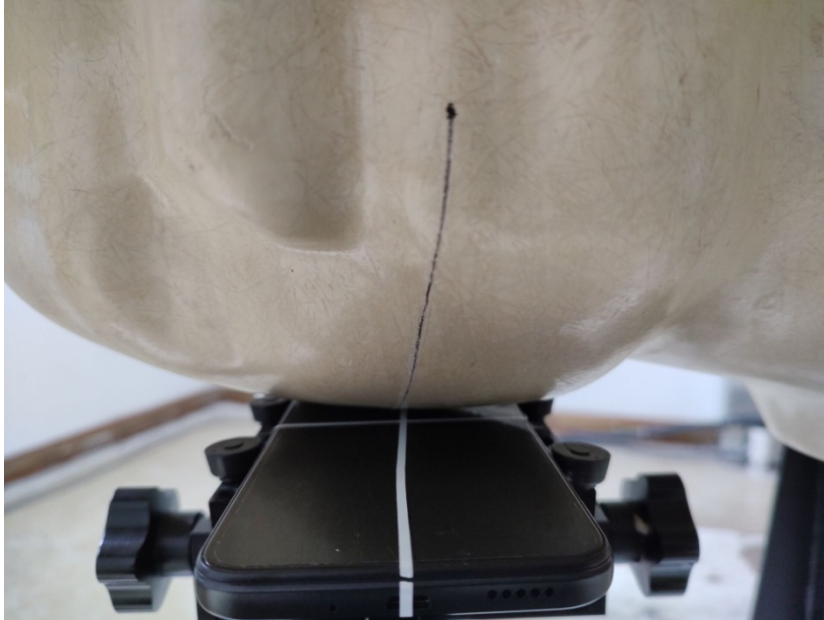
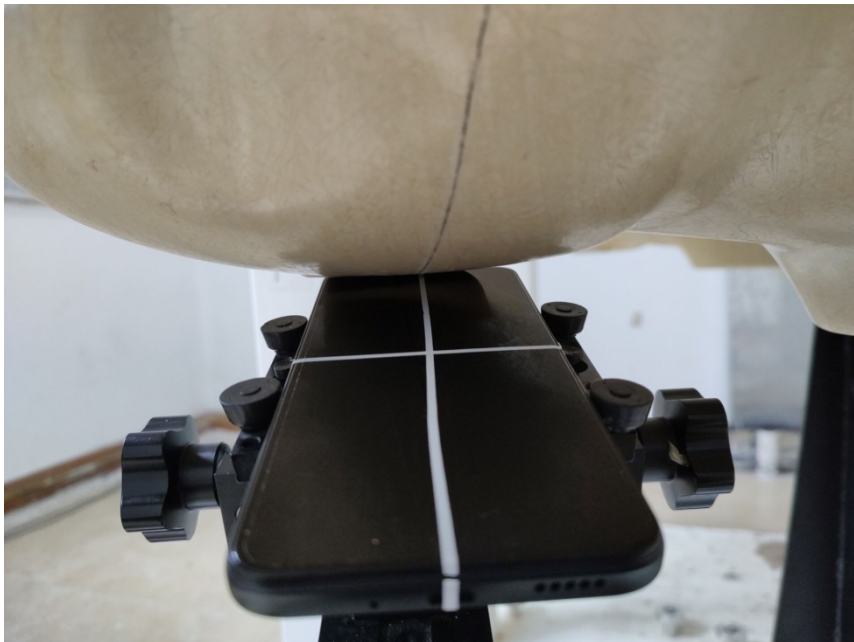


Annex B Test Setup Photos

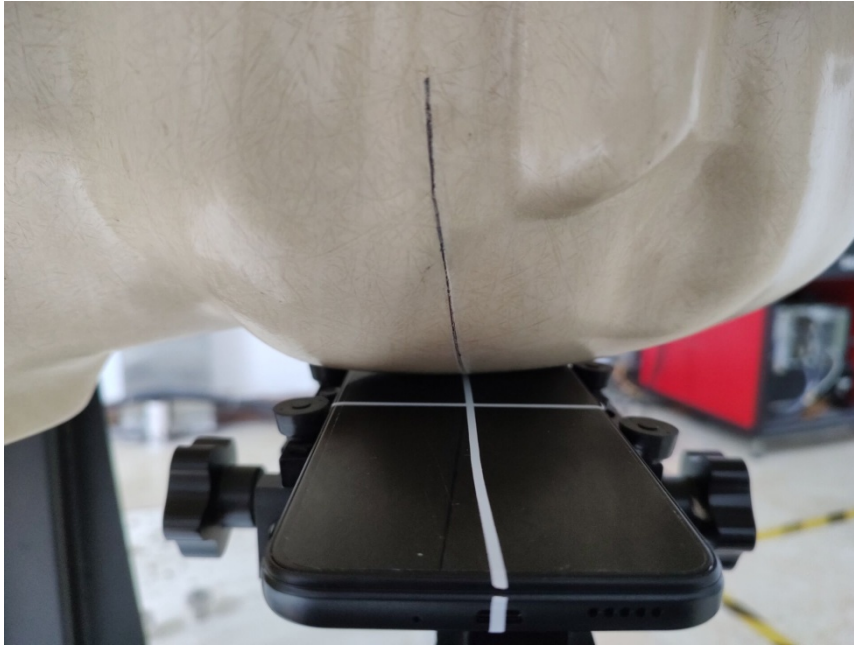
Head



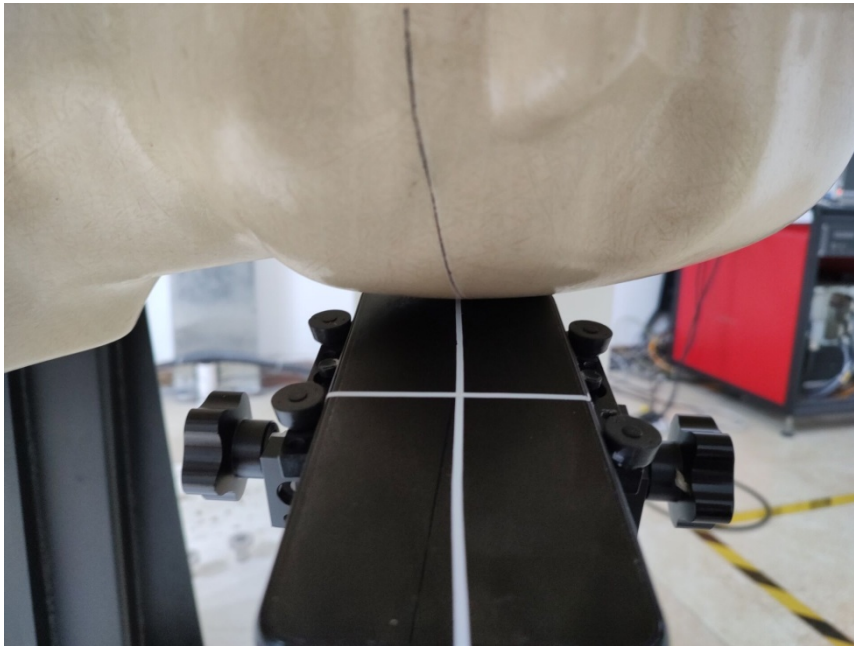
Right Cheek



Right Tilt



Left Cheek



Left Tilt

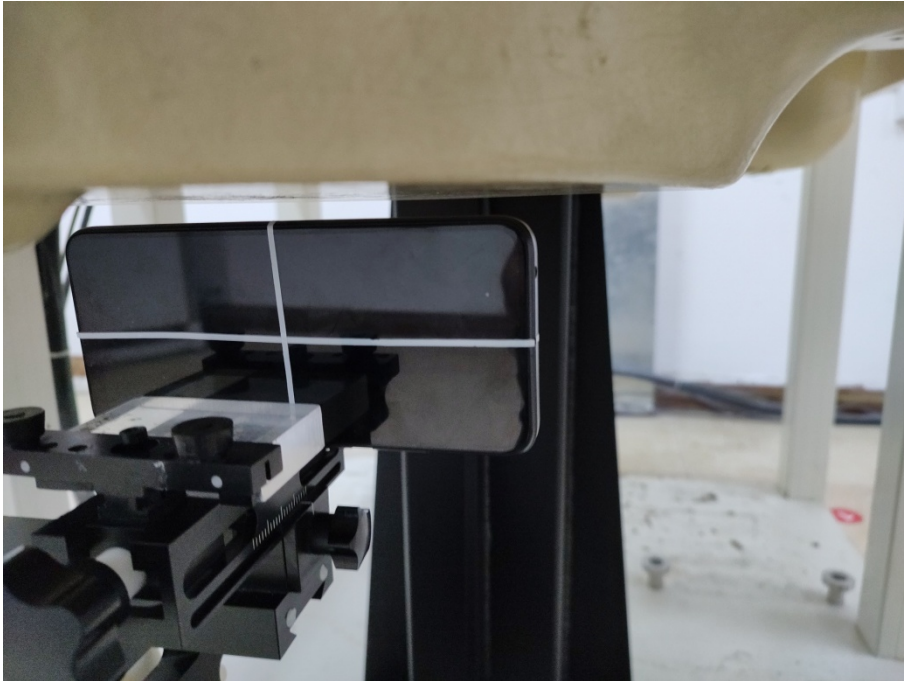
Body



Front Side (Test distance: 10mm)



Back Side (Test distance: 10mm)



Left Side (Test distance: 10mm)



Right Side (Test distance: 10mm)



Top Side (Test distance: 10mm)



Bottom Side (Test distance: 10mm)