

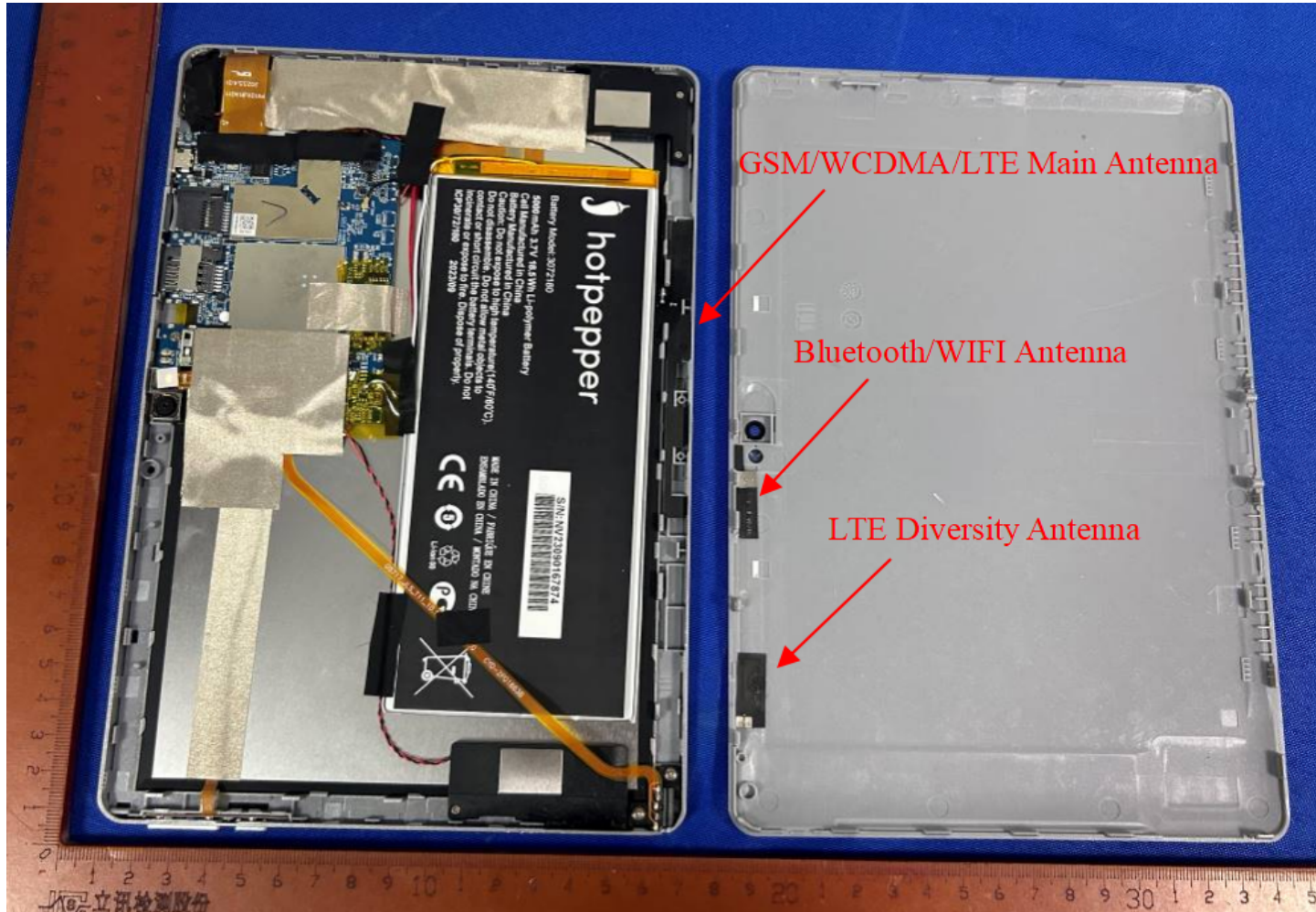
Antenna specification

Manufacturer: Suowode

Model: MQ1055SA

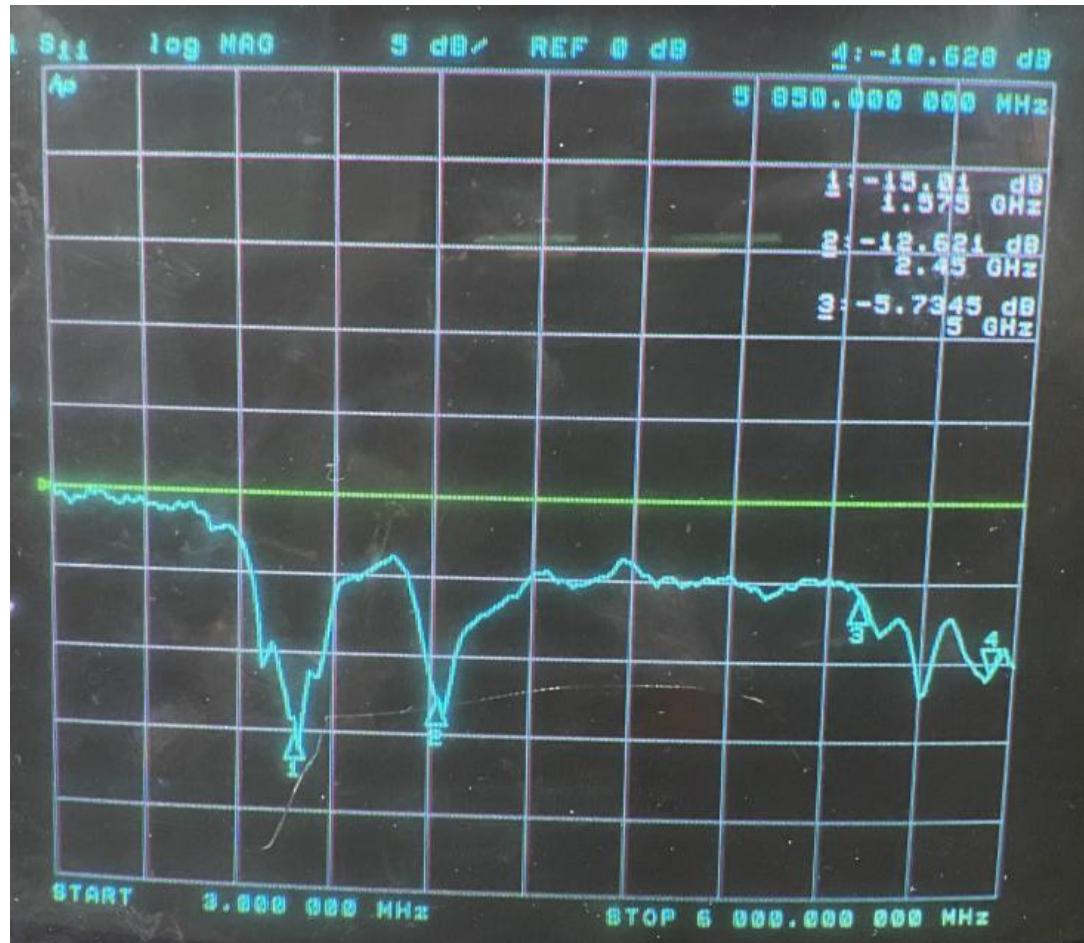
Frequency range: 2400-2500MHz; 5000-6000MHz

Antenna position



SWARD

Bluetooth/WIFI Antenna S11

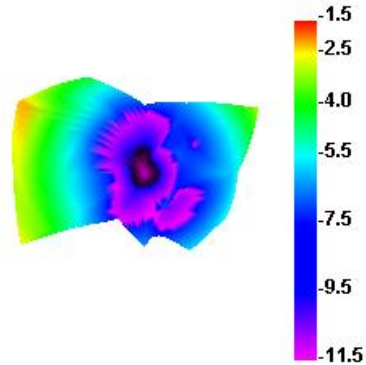


SWARD

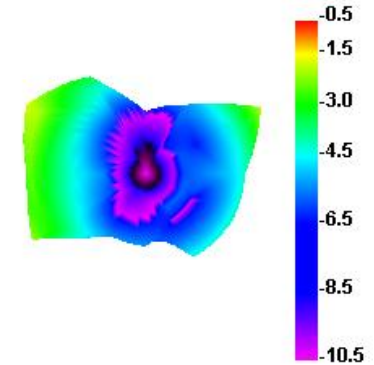
Bluetooth/2.4G WIFI Antenna Gain

Passive Test For 2.4G			
Freq	Effi	Effi	Gain
(MHz)	(%)	(dB)	(dBi)
2400	22.44	-6.49	-1.54
2410	18.9	-7.24	-1.99
2420	21.06	-6.77	-1.27
2430	21.78	-6.62	-1.04
2440	23.13	-6.36	-0.83
2450	24.8	-6.06	-0.46
2460	22.05	-6.57	-0.77
2470	18.81	-7.26	-1.36
2480	17.73	-7.51	-1.56
2490	20.45	-6.89	-0.96
2500	22.06	-6.56	-0.54

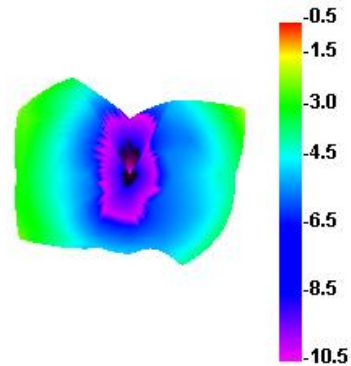
2400.000MHz



2450.000MHz



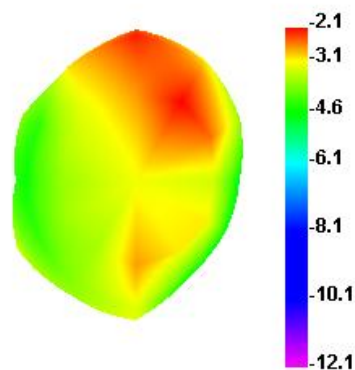
2500.000MHz



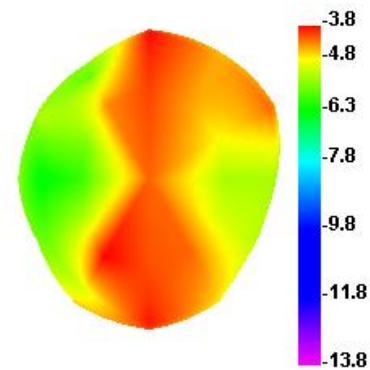
5G WIFI Antenna Gain

Passive Test For 5G-WIFI			
Freq	Effi	Effi	Gain
(MHz)	(%)	(dB)	(dBi)
5000	24.98	-6.02	-2.12
5100	22.63	-6.45	-2.24
5200	27.02	-5.68	-1.61
5300	30.16	-5.21	-1.11
5400	26.17	-5.82	-2.04
5500	18.88	-7.24	-3.76
5600	11.44	-9.41	-4.87
5700	20.43	-6.9	-1.98
5800	24.25	-6.15	-0.8
5900	34.26	-4.65	0.13
6000	37	-4.32	0.65

5000.000MHz



5500.000MHz



6000.000MHz

