



Use Camera or QR Scanner to Scan
Or Visit: <https://5thwheel afterservice.vip>



The illustrations and function descriptions in this user manual are for illustration purposes and reference only, and the products are subject to the real product. The mentioned technical performance indicators are based on the specific experimental environment, and the actual indicators may vary depending on the setting and environment. This product needs to be used with mobile phones or other smart devices. The realization of all functions of this product requires network support, with the network fee being subject to the supplier's service rate. This product is only used to assist safety management and cannot replace other safety measures. Do not use this product for any illegal purpose. Some services are provided and supported by third parties, which may change at any time. Invanti does not provide any guarantee for third-party services. Please read the terms of the third-party service and privacy policy carefully before use.

The text and logo of 5TH WHEEL are trademarks or registered trademarks of enterprises affiliated with Invanti. Other company, product or service names mentioned may be trademarks or registered trademarks of their respective owners.

© 2021 Invanti (Beijing) Technology Co., Ltd all rights reserved.

Original Instructions



User's Manual of 5th Wheel Electric Scooter M2

V1.0

The picture is for reference only.
Before using the product, please read this manual.
IMPORTANT! Read carefully and keep for future reference.

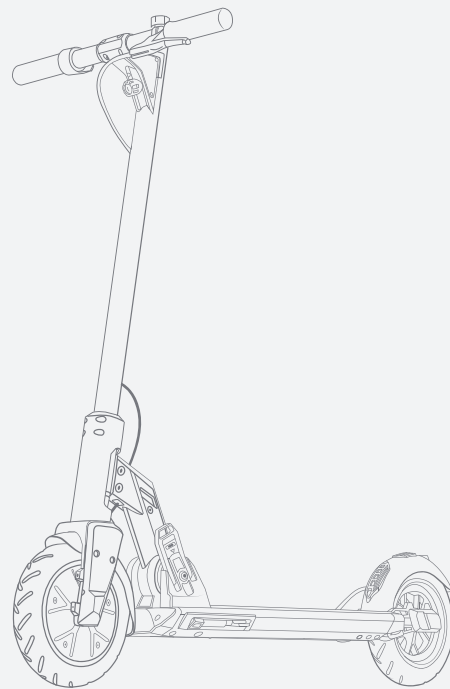
Contents

1.Safety Precautions	2
2.About the Product	9
3.Product Display	11
4.Assembly Guide	12
5.Unfolding/Folding/Carrying	13
6.Riding and Parking	16
7.Control System	17
8.Indication Descriptions	20
9.About Charging	22
10.About the Battery and Charger	22
11.App Descriptions	24
12.Care & Maintenance	26
13.Troubleshooting	27
14.Product Specifications	29
15.Authentication	30

* Please read and know the instructions described in the user manual carefully before using the electric scooter and keep it for future reference.

Welcome

Thank you for choosing the 5TH WHEEL electric scooter 5LCHM02 (hereinafter referred to as M2). Enjoy the pleasure brought by M2.



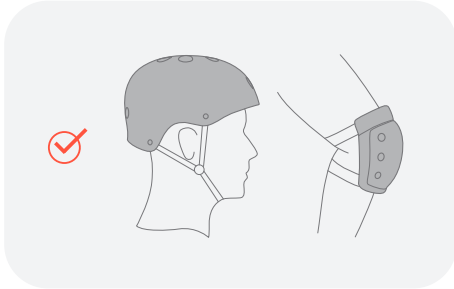
1 Safety Precautions

Please read the following instructions carefully before use.

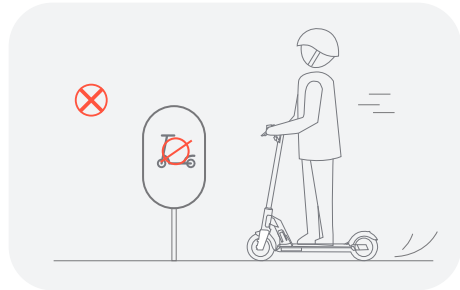
1. M2 is designed for and can only be used by adults. Besides, do not ride it with anyone else, including children.



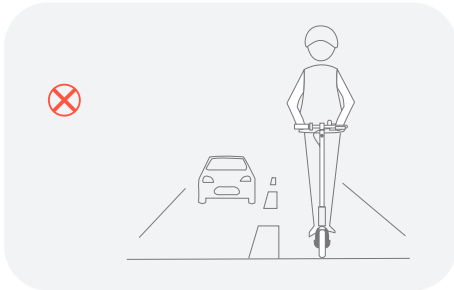
2. Please wear a safety helmet and other protective equipment when riding M2.



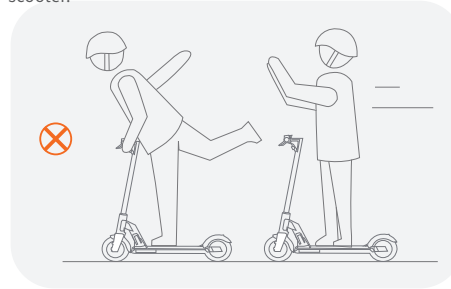
3. Please ride M2 in accordance with the local laws. And do not ride it in unsafe or illegal places.



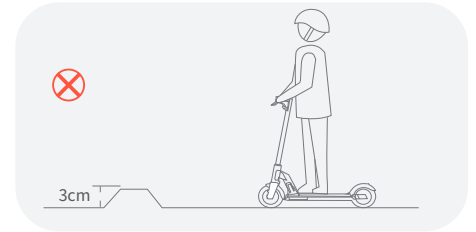
4. Please practice riding M2 in the open space for the first use and avoid riding it on the traffic line. After knowing its operation completely, you can ride it on the road in accordance with the local laws.



5. Do not engage in any dangerous actions or ride M2 without both hands gripping the handles. And keep your feet on the scooter.



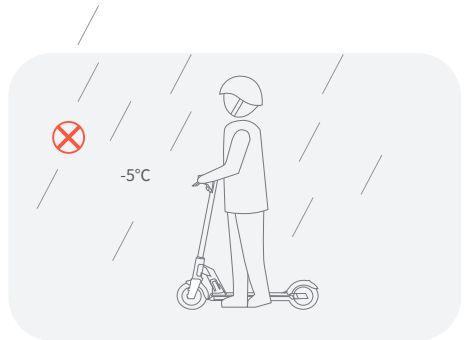
6. Do not try to cross bumps higher than 3cm (0.39inch) directly, which may overturn M2 and cause injury to the user or damage to the scooter. And avoid riding through potholes lower than 3cm (0.39inch) as far as possible.



7. For your riding safety, please control the speed within 15.5mph. Please try to avoid riding at night. If you are riding at night, please turn on the lights and control the speed at 9.3mph or below.



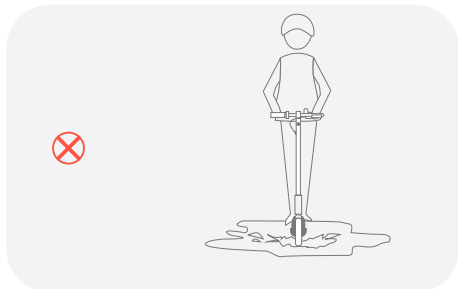
8. Do not ride it in an environment below 23°F.



9. When riding on the uneven road surface or poor road condition, please slow down and ride carefully or get off the scooter to pass through.



10. Do not ride it on slippery roads (such as roads covered with ice, oil, etc.).



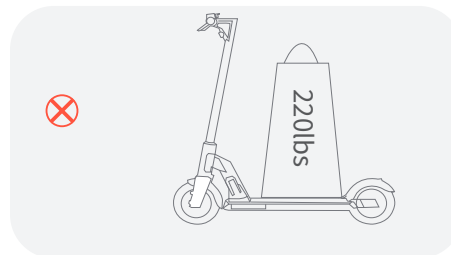
11. Do not immerse M2 in puddles deeper than 4cm (1.57 inches) to avoid damages to the electrical part due to water inflow.



12. In rainy, snowy, windy and other bad weather, please do not ride it to avoid damages caused by unnecessary factors.



13. The user should ride it in accordance with the relevant instructions described in the user manual. Anything placed on the product should not be heavier than the max weight capacity of M2.



15. M2 is a special riding product. Please ride it on a flat road without potholes.



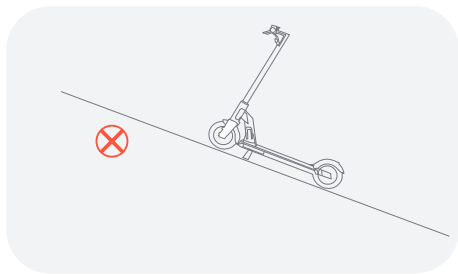
14. Please avoid riding it or placing it in an environment with too high or too low temperature. Please do not place M2 near combustibles, so as to avoid fires under accidental circumstances.



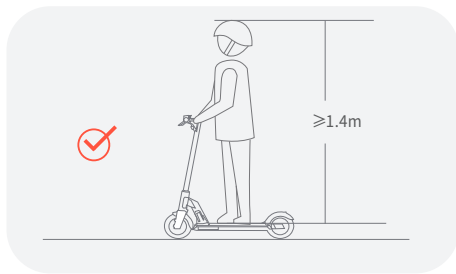
16. Do not any load attached to the handlebar which will affect the stability of the vehicle.



17. Engage the kickstand when the vehicle is not in use; Flip up the kickstand before use; Do not park the vehicle on the slope.



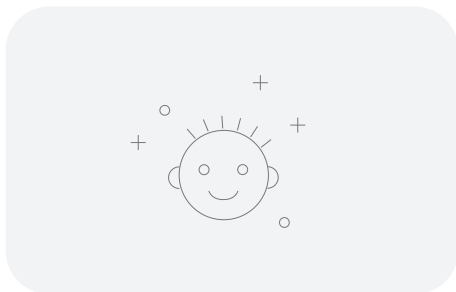
18. The minimum height of the user is 1.4m, while the maximum height is no more than 2.2m; the maximum age of the user is 70 years old, while the minimum age is no less than 13 years old.



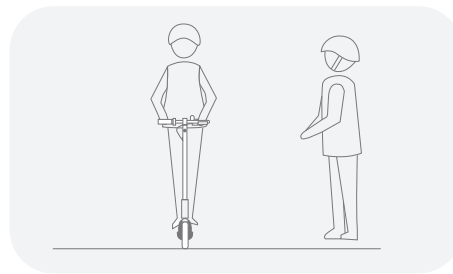
19. Braking performance and friction between the tire and road deteriorates in wet conditions, so it is harder to control the speed and easier to lose control. Slow down and brake early when it is raining.



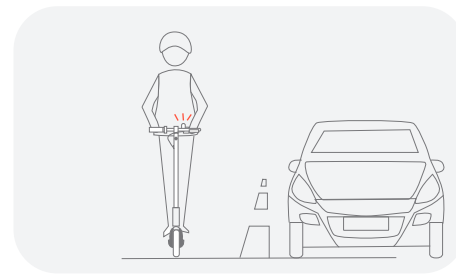
20. **WARNING** Keep plastic covering away from children to avoid suffocation.



21. The user shall take the time to learn the basics of the practice to avoid any serious accident that can take place in the first month.



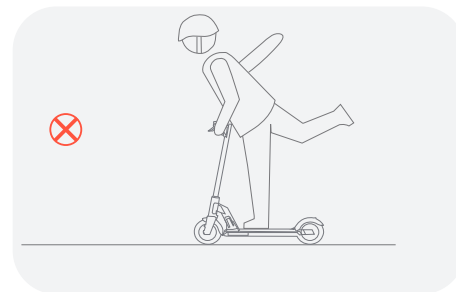
22. Notify your presence when approaching a pedestrian or cyclist when you are not seen or heard. Avoid high traffic areas or overcrowded areas.



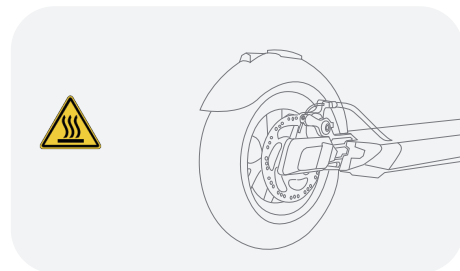
23. Cross the protected passages while walking. In all cases, take care of yourself and others.



24. Do not divert the use of the vehicle, This vehicle is not intended for acrobatic use.



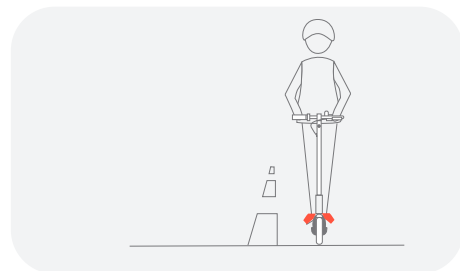
25. Caution, the brake may become hot in use. Do not touch after use.



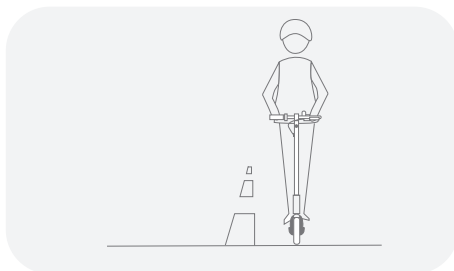
26. Eliminate any sharp edges caused by use. Do not modify or transform the vehicle, including the steering tube and sleeve, stem, folding mechanism and rear brake.



27. The user has the obligation to always wear shoes when riding.

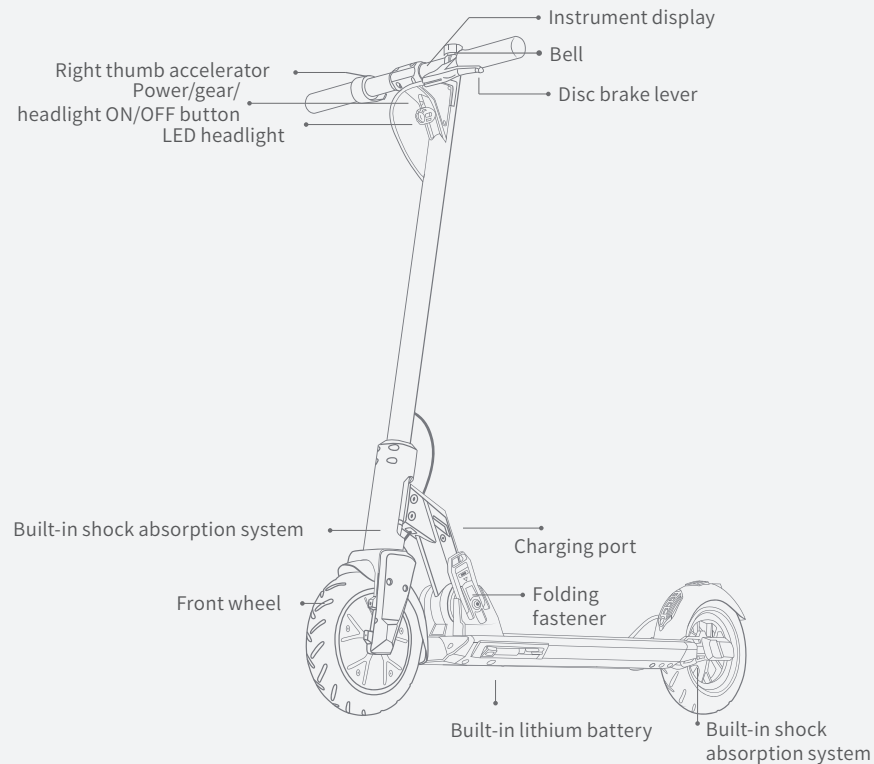


28. In any case, anticipate your trajectory and your speed while respecting the code of the road, the code of the sidewalk and the most vulnerable. If any, local special laws and regulations should be observed during riding of this product.



2 About the Product

1. Product Overview



*The accessories and any additional items which are not approved by the manufacturer shall not be used.

Accessories



Manual



Screw *4



Screwdriver



Commissioning tool kit



Power adapter

Please carefully check whether the items in the packing box are complete and intact.

Product Contents	Quantity
User Manual	1
Screws	4
Fastening Tool	1
Tool Kit	1
Power Adapter	1

3 Product Display

Upright State

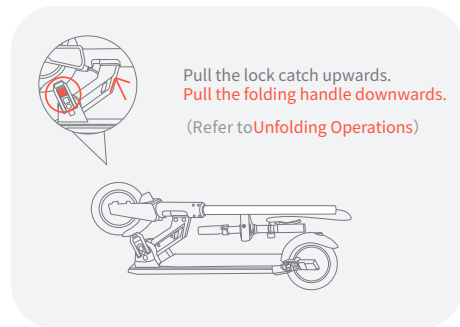


Folded State

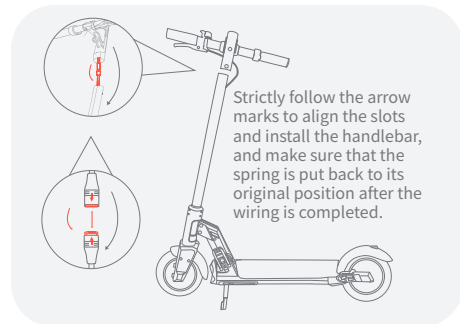


4 Assembly Guide

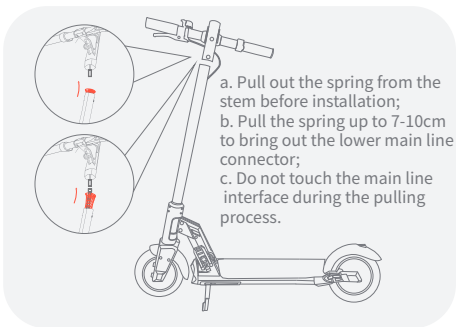
1. Unfold the scooter and put the kickstand down.



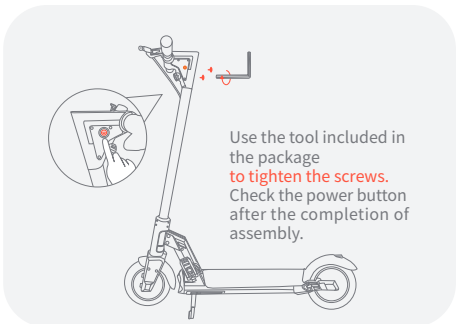
3. Connect the main line and attach the handlebar to the stem.



2. Pull the spring to bring out the lower main line connector.

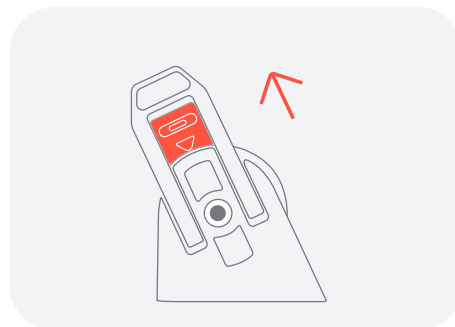


4. Tighten the screws with the tools included in the package and press the power button to check if it works normally.



5 Unfolding/Folding/Carrying

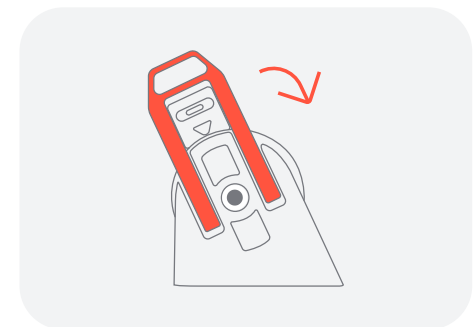
1. Push up the shackle.



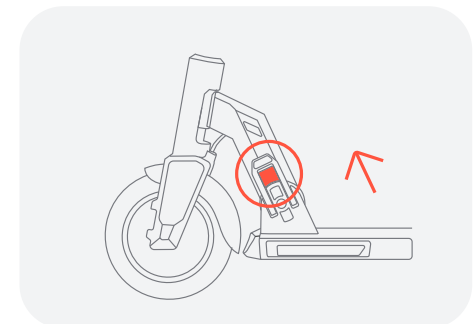
3. Lift the head of the scooter.



2. Pull the folding handle downwards and outwards.



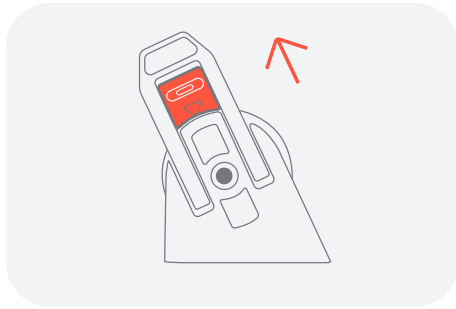
4. Close the folding handle upwards.



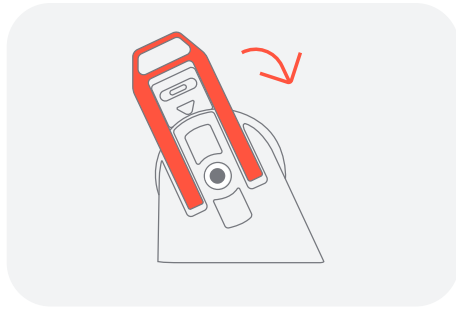
2. Folding Operations

Note: For your safety, it is recommended to perform the folding operation after the scooter is powered off.

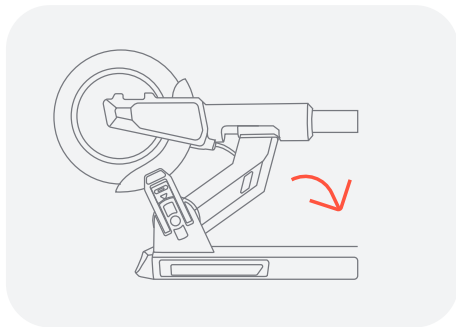
1. Push up the shackle.



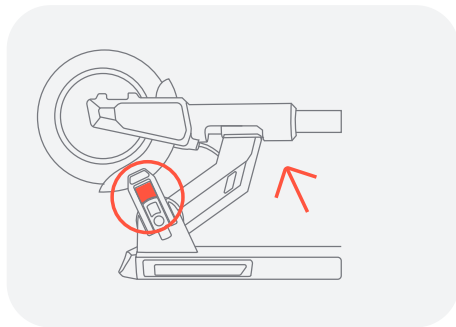
2. Pull the folding handle downwards and outwards.



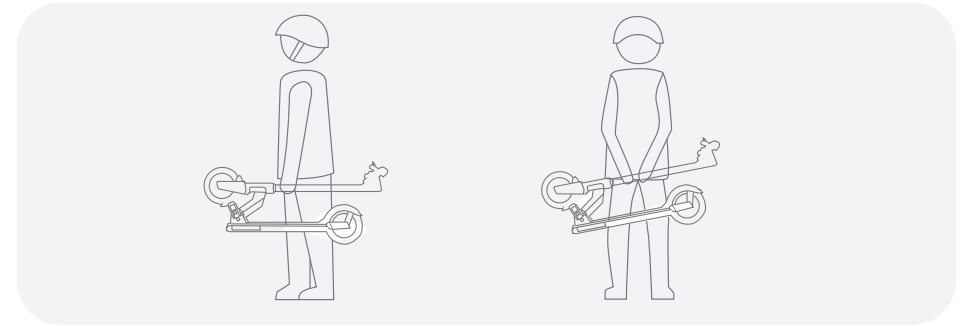
3. Lower the head of the scooter to be horizontal.



4. Close the folding handle upwards.



3. About Carrying

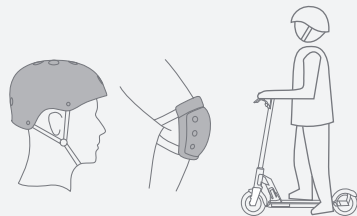


Note: After folding it, carry the scooter with one or both hands.

6 Riding and Parking

Preparations before Riding the Scooter

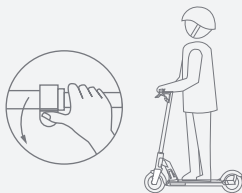
1. Choose a suitable place for riding the scooter.
2. Unfold the scooter by following the instructions described in the user manual and wearing protective equipment.



Starting Riding the Scooter

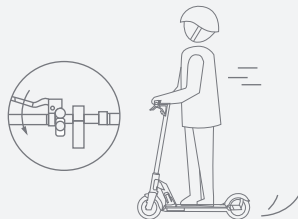
1. Press the Power switch to turn on the scooter.
2. Stand on the pedal with one foot on the ground.
3. Slide the scooter forward and press the throttle gently downward. And the scooter will move forward slowly. When riding it smoothly, stand on the pedal with both feet. The greater you press the throttle downward, the faster the speed.

Note: For safety, M2 is designed with a non-zero start. The throttle will take effect only after the scooter slides forward for a certain distance.



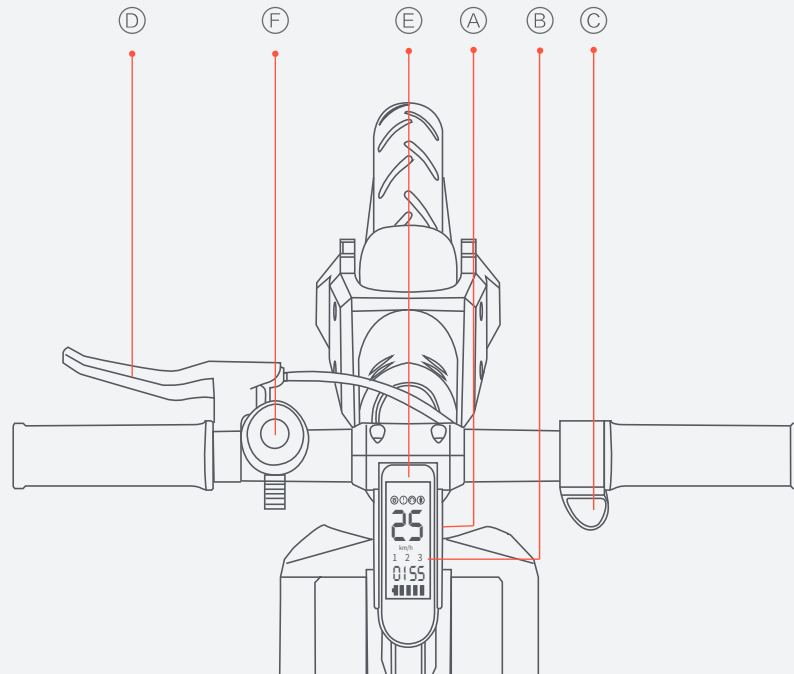
Parking

1. Under normal circumstances, by pressing the left brake, the scooter will stop moving immediately. The greater you press the left brake downward, the greater the braking force.
2. In an emergency, you can step on the rear brake with your foot to reach the front wheel electronic brake and the rear wheel friction brake at the same time.

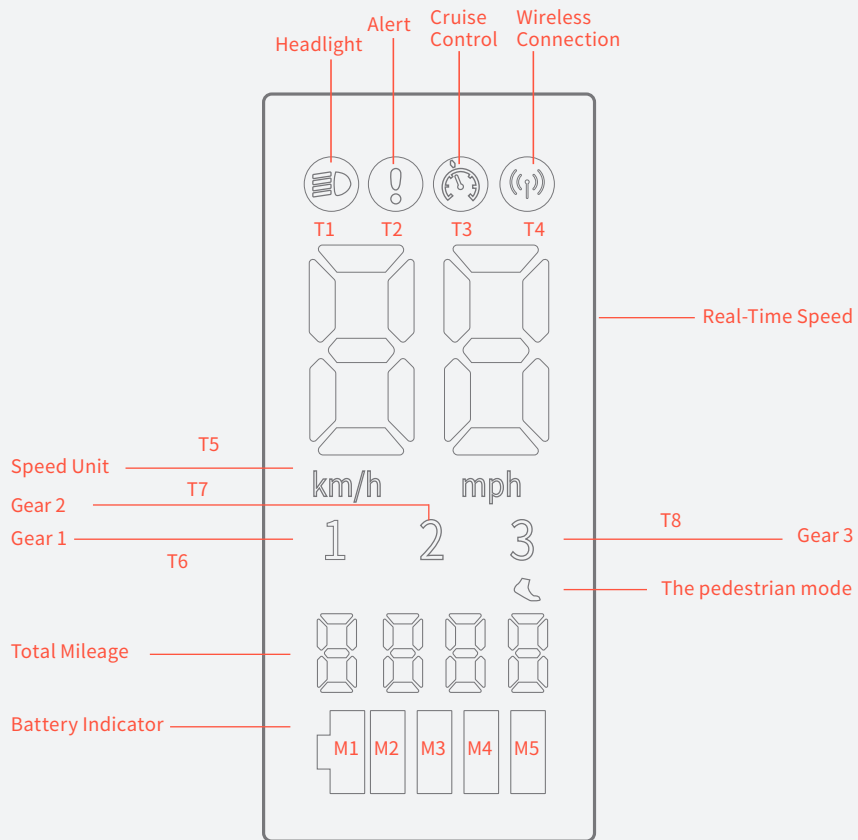


7 Control System

- (A) Power Switch
- (B) Gear Indicator
- (C) Throttle
- (D) Brake Control
- (E) LED Display
- (F) Bell



LED Display



Power Switch

Short press the Power switch for 1 second to turn on the scooter, and long press the Power switch for 3 seconds to turn it off.

Gear Setting

Press the power button twice quickly to switch the gear. The gear can be set to Level 1 (max. 6 km/h, The pedestrian mode), Level 2 (max. 16 km/h), and Level 3 (max. 25 km/h).

Speed control

When riding the scooter at a speed faster than 3km/h (1.86 mph), the throttle will get started and take effect. By pressing the throttle, the user can control the riding speed. (Speed Range: 1-25km/h / 0.62-15.53 mph)

Brake control

Hold the left brake lever to brake. The greater the holding force, the greater the braking force. The indicator will be blinking under the condition of braking.

LED Headlight Switch

After switching on the scooter, click the LED headlight switch to turn it on.

Emergency Braking

When encountering an emergency, step on the rear brake with your foot. At this time, the rear wheel friction brake and the front wheel electromagnetic brake can work at the same time. Under normal circumstances, do not use emergency braking vigorously during high-speed driving, so as to avoid the riding risk or damage to the rear wheel. The company is not responsible for the damage.

Tyre pressure

Before riding, please make sure the tyre pressure is no less than 2.8KPA. Otherwise, the mileage will decrease each time. The tyre pressure may also be under the standard value, if the scooter is unused for a long time. (This is applicable for the scooters equipped with pneumatic tires.)

Cruise control

The scooter is not initially configured with the cruise control speed. If necessary, open the mini program and select the cruise control speed. When the scooter is running at the constant cruise control speed, the cruise control will be enabled. After the cruise control is enabled, you can release the thumb accelerator, and the scooter will automatically run forwards at a constant speed. Hold the left brake lever to disable the cruise control. When the speed of the scooter reaches the set cruise control speed, the cruise control will be enabled again.

You can set the status of no cruise in the mini program to disable the cruise control function.

Noise emission

The A-weighted emission sound pressure level of the vehicle in operation is less than 70 dB(A).

8 Indication Description

LED Power Indication

Each LED indicator represents 20% of power. When the battery power is below 10%, M5 flashes.

>80%	>60%	>40%	>20%	<10%
M1-M5 light up	M3-M5 light up	M4-M5 light up	M5 light up	M5 flashes

Cruise Control Indication

Turn On	Turn Off
When the cruise control is turned on, the indicator light will stay on.	When the cruise control is turned off, the indicator light goes out.
T3 lights up	T3 goes out

Headlight Indication

Turn On	Turn Off
When the headlight is turned on, the indicator light will stay on.	When the headlight is turned off, the indicator light goes out.
T1 lights up	T1 goes out

Gear Indication

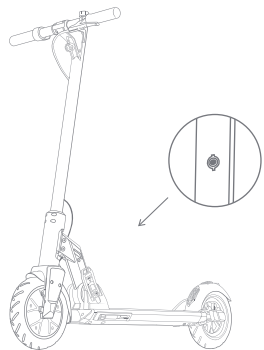
Gear 1	Gear 2	Gear 3
Gear 1 is enabled.	Gear 2 is enabled.	Gear 3 is enabled.
T6 lights up, T7 & T8 go out	T7 lights up, T6 & T8 go out	T8 lights up, T6 & T7 go out

Error Indication

If there is anything abnormal about the scooter, the warning indicator will flash, with the flashing value E1-E6 displayed.

Errors	Code	Solutions	
Communication Fault	E1	Please check whether the taillight is on. If it is off, it means that the power supply is insufficient. Please replace the controller or the LED display. If it is on, please check whether the connecting wire between the controller and the LED display is open-circuit.	
Brake failure	E2	Please check whether the brake is pressed.	Press and release the brake to reset the brake.
			If not, please check whether the connecting wire between the brake and the LED display is short-circuited or open-circuit.
Throttle Failure	E3	Please check whether the throttle is pressed.	Press and release the throttle to reset the throttle.
			If not, please check whether the connecting wire between the throttle and the LED display is short-circuited or open-circuit.
Motor Fault	E4	Check whether the motor and controller wire is connected correctly.	If it is open-circuit or short-circuited, please replace the connecting wire.
			Replace the brake handle.
Controller failure	E5	If the controller is damaged, please replace the controller.	Replace the throttle.
			If it is not connected correctly, please adjust and connect the motor and the controller correctly.
Overheated Motor	E6	Check whether the motor temperature is too high.	If it is open-circuit or short-circuited, please replace the connecting wire.
			If the motor temperature is too high, please wait for the motor to cool to the appropriate working temperature.
Over-speed alert	Flashing	Reduce the riding speed.	

9 About Charging



- ① Open the rubber plug. ② Plug in the charger. ③ Insert the rubber plug and fix it after charging.


Step 1. Open the rubber plug and insert the charger into the charging port on the scooter.

Step 2. Insert another end of the charger into the power outlet.


Step 3. When charging, the red indicator on the charger will light up. When the indicator turns green, it means that the scooter is now fully charged.

10 About the Battery and Charger


M2 electric scooter is equipped with a special lithium battery and a special smart charger. The scooter and its accessories have a special number. Do not use chargers of other brands, nor should other types of products be charged with the charger of our company. The company will not be responsible for the accessories damaged by misuse.

Battery 


The lithium battery provided by the company can be recharged for at least 800 times, and more than 1,000 times under normal circumstances. Please charge full battery for the first time before using it. The battery can be charged at anytime, and there is no any damage to charge it frequently. Meanwhile, please don't forget to charge it per 3 months if you don't use it for along term.

Charger 

The dedicated charger provided by the company has a function of charging protection. When the battery is 100% charged, the charger will be powered off automatically. The charging time is about 4-5 hours. Damage to the battery arising from water, collision and other abnormal factors is excluded from the warranty policy.

Charging instructions 

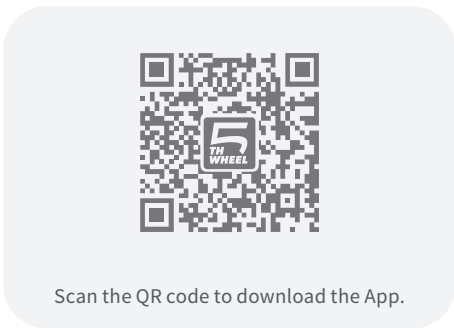
1. Open the rubber and insert the plug into the hole;
2. Insert another plug of the charger into the electric outlet;
3. When the indicator lamp is red, it shows the battery being charged; When the lamp turns green, the battery is finished charging.
4. Please shut down and keep away from water before charging.
5. Only use the specified charger for charging.
6. Warning: Please be careful not to get electric shock.

Kinetic energy recovery 

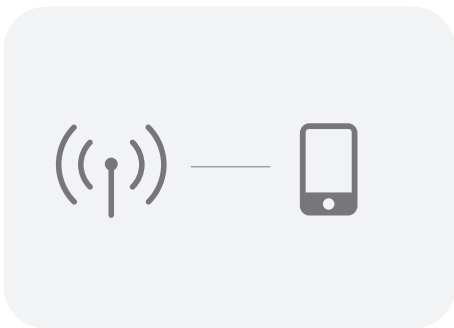
Press the brake in the running process to enable the kinetic energy recovery system and convert part of kinetic energy into electrical energy to be stored and used. The kinetic energy recovery system can enhance the experience of emergency braking. At the same time, the recovered kinetic energy can help increase the endurance. Changes in the power are displayed simultaneously.

11 Instructions for APP

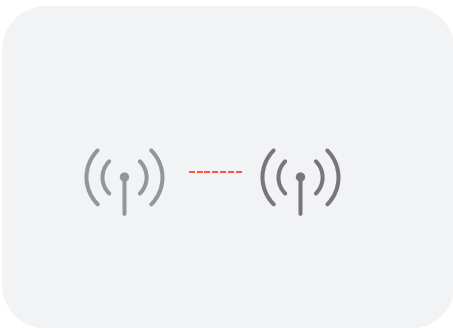
①.Downloading the App



③Finish the connection by following the instructions.



②>Please turn on the scooter before the connection.



④Register account using your Email. A PIN code is sent and needed in this procedure. Scan the bar code under the scooter and bind the vehicle.



- Connection status — 已连接
- Battery indicator — 85%
- Real time speed — 89.6 km (单次里程) | 0 km/h (当前速度) | 135.6 km (总里程数)
- Total mileage
- Gear — 档位 (3档)
- Lock switch — 锁车
- LED display backlight adjustment — 背光设置 (50%)
- Speed unit — 速度单位 (mph)
- Cruise control — 定速巡航 (1秒)
- Electronic brake strength — 电子刹车强度 (2)
- Vehicle self inspection — 车辆自检
- 产品信息

Special note: about the locking function, it can only ensure that the vehicle cannot run normally. Due to the light weight of the whole vehicle and the whole vehicle is composed of mechanical parts, it can be removed with corresponding tools. To ensure that the vehicle is not stolen, please park your vehicle in sight. Enclosed or added machinery and fixtures.

*The actual content shall be subject to the app display interface

12 Care & Maintenance

Lubrication



For maintenance, add a small amount of white grease or lubricant to the folded part once every six months. Check the scooter once every three months for screw loosening. Tighten the loose screw.

Battery



When you get the electric scooter for the first time, please fully charge the battery before using the scooter. The battery can be charged at any time to ensure the power supply. It will not be damaged during charging. When not in use, the battery needs to be charged once every three months.

*Laboratory data

Storage and daily maintenance



Avoid leaving scooter under direct sunlight or in severely humid places for a long time. Keep the scooter clean. Regularly check the tightening of the various bolted elements, in particular the wheel axles, the folding system, the steering system and the brake shaft.

Cleaning Recommendations



If you see stains on the scooter's body, wipe them off with a damp cloth. If the stains won't scrub off, put on some toothpaste, and brush them with a toothbrush, then wipe them off with a damp cloth. Do not clean the scooter with alcohol, gasoline, kerosene or other corrosive and volatile chemical solvents to prevent tire damage. Do not wash the scooter with a high-pressure water spray. During cleaning, make sure that the scooter's turned off, the charging cable is unplugged, and the rubber flap is closed as water leakage may result in electric shock or other major problems.

Routine Inspection



1. Before riding, please confirm the folding mechanism is locked;
2. Please check whether the tires are badly worn. Please contact the local authorized dealer if they need to be replaced;
3. Please check whether the wear condition of the brake pad affects the use of the brake system. If so, please contact the local authorized dealer to deal with the problem;
4. The screws used in this product are self-tightened screws. Please note that the effect may be gone after several times of tightening.

13 Troubleshooting

If there is any problem with the scooter, please try to solve it in the following ways.

1.The display screen is black.

Cause: The exposure time in the sun is too long.

Solution: Please place the scooter in a dark environment for a period of time and it will return to normal.

2.The value is inconsistent with the actual value.

Cause: The parameter setting is incorrect or missing.
Solution: Long press the Power switch to shut down the scooter, and then short press the Power switch to restart it.

3.The displayed value is dim.

Cause: The battery connection is loose, or there is no battery power left.
Solution: Turn off the scooter and restart it. If the problem remains, please contact the customer service via <https://5thwheel afterservice.vip>

4.The product cannot work normally.

- a. Please make sure that it is powered on.
 - b. Check whether there is battery power left by viewing the display screen.
 - c. Check whether the left brake and rear brake are in place.
 - d. Check whether all ports and power cables are connected accurately.
- If all the above steps are checked and the product still cannot work normally, please contact us via <https://5thwheel afterservice.vip>

5.The screw at the junction of the handlebar and the stem is loose.

Cause: The loose screw is a spare locking screw, which is loose by default in the factory setting, without affecting normal use.

Solution: The user can adjust and lock by the screw if necessary.

6.Braking Distance 2.5m

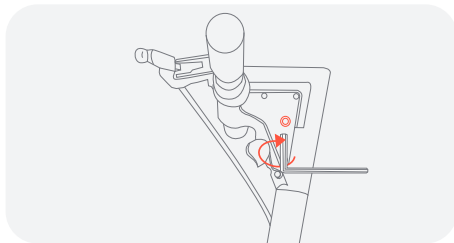
The braking distance of this product is measured under the conditions of 75kg loading, 24°C temperature, 55%-65% humidity, 2.9 bar tire pressure and asphalt pavement.



As shown in the figure

The mechanical vibrations transmitted by the Electric Scooter are less than 2.5 m/s². The uncertainty of measurement is.

Handlebar commissioning

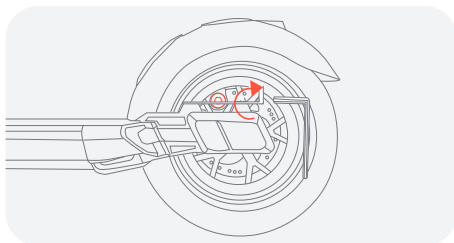


After repeated use of electric scooter, screws may become loose, which may cause the vertical rod to shake. If the vertical rod is shaking when riding, use the hexagon wrench to tighten the hexagon screw under the left side of the handlebar clockwise as shown in the figure.

(Note: The hexagon wrench is provided in the commissioning tool kit.)

Torque:6-10N·m

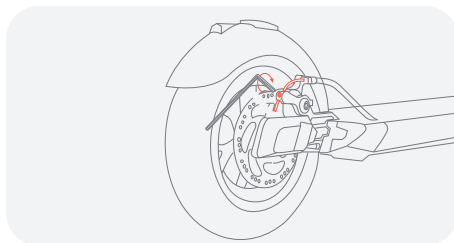
Disc brake commissioning



If the brake is too loose, use the hexagon wrench to tighten it clockwise. If the brake is too tight or the brake disc is abnormal, use the hexagon wrench to loosen it counter-clockwise. (The aforesaid screw is on the right side of the rear tire, which needs to be tightened or loosened from the left side of the rear tire through the hub.)

(Note: The hexagon wrench is provided in the commissioning tool kit.)

Torque:6-10N·m



If the braking problem is still not resolved after in strict accordance with the commissioning method as shown in the left figure, please use the hexagon wrench to loosen the screws on the tension disc as shown in the figure above, and adjust the brake by controlling the length of the exposed end of the brake cable.

Torque:6-10N·m

14 Product Specifications

Parameter	Product name	5th Wheel Scooter M2
	Model	5LCHM02
Dimension	Upright: L x W x H	Approx. 43 x 43 x 20 inches
	Folded: L x W x H	Approx. 43 x 16 x 28 inches
Weight	Net weight	Approx. 33lbs
Status	Max Load	220lbs
Main parameters	Max Speed	About 15.5mph
	Travel Distance	16-19miles (Depends on factors such as environment, angle, speed, driving habits, etc.)
	Max Incline	Approx. 14°
	Applicable Terrain	Stable and smooth road surface, with bumps less than 2cm and depressions less than 3cm
	Tires	8.5-Inch Honeycomb Tire(Tire pressure range: 2.1-2.8Kpa)
	Damping System	Spring Damping + Concealed Damping + Tire Damping
	Dustproof and Waterproof Grade	IP54
	Braking System	Motor brake + Disc brake + Foot brake
	LED display	Speed, Mileage, Gear
	Lighting system	LED high-brightness headlight
Parameters about Charging	Motor power	350W
	Charger Rated Input Voltage	100V-240VAC 50/60Hz
	Lithium battery	36V-7.5AH
	Charging time	4-5h

15 Authentication

Applicable model: M2

The product has passed the ANSI/CAN /UL-2272 certification of the CSA.

The battery complies with the UN/DOT 38.3.

According to the Federal Communications Commission (FCC) Compliance Statement as follows:

The product complies with part 15 of the FCC rules, and the operation must meet the following two conditions: (1) the product should not cause harmful interference, and (2) the product must accept any received interference, including interference that may lead to accidental operation. Any change or modification not expressly approved by the responsible party may make void the user's right to operate the product.



The EU Compliance Statement is as follows:

WEEE needs to properly dispose of and recycle the product. This sign indicates that the product should not be disposed of together with other domestic waste throughout the EU.

Therefore, in order to prevent possible harm of uncontrolled waste treatment to the natural environment or human health, it is necessary to recycle it and promote the sustainable reuse of material resources. To recycle the used product, use the return and collection system or contact the retailer who can use the product for environmentally safe recycling.



EU Battery Recycling Information:

Batteries or battery compartments are marked in accordance with the European Directive 2006/66/EC and the amendment 2013/56/EU on batteries and accumulator cells and scrap batteries and accumulator cells.

The directive applies to the recycling framework of waste batteries and accumulator cells throughout the EU. The label on the battery indicates that the battery should not be discarded, but recycled at the end of its service life according to the directive.

According to the European Directive 2006/66/EC and the amendment 2013/56/EU, batteries and accumulator cells are labeled to indicate that they will be collected separately and recycled at the end of their service life. The label on the battery may also contain the chemical symbols of the relevant metals in the battery (Pb, Hg and Cd). Users should not dispose of batteries and accumulator cells as garbage, but use the collection framework available to customers to recycle and dispose of batteries and accumulator cells. With the engagement of users, it is important to minimize any potential impact of batteries and accumulator cells on the environment and human health due to the presence of potentially hazardous substances.

Before placing electrical and electronic equipment (EEE) into a waste collection stream or waste collection facility, users of equipment containing batteries and/or accumulator cells must remove these batteries and accumulator cells for separate collection.

Restriction of Hazardous Substances in Electrical and Electronic Equipment (RoHS) Directive.

The products and parts (cables, wires, etc.) of Invanti (Beijing) Technology Co., Ltd comply with the requirements of directive 2011/65/EU on restricting the use of certain hazardous substances in electrical and electronic equipment ("RoHS recasting" or "RoHS 2")



Trademark and Legal Statements

5TH WHEEL is a registered trademark of Invanti (Beijing) Technology Co., Ltd (hereinafter referred to as "Invanti"), which is authorized to be used by Solowii (Beijing) Technology Development Co., Ltd. Android and Google Play are trademarks of Google Inc. and the App Store is the service mark of Apple Inc. Their respective owners reserve the trademark rights mentioned in this user manual.

The products involved in the registered trademark of 5TH WHEEL are protected by relevant patent laws. For relevant patent information, please visit the website: <http://www.invanti.com>.

In this user manual, we make our utmost to describe all the instructions and functions of the M2 electric scooter. With constant updates and iteration, the M2 electric scooter received may be slightly different from the product features shown in this manual. For more information, please visit the Apple App Store (iOS) to download the App.

Please note that Invanti has developed products with many functions and different models of products, and some of the functions mentioned here may not be applicable to the product or equipment received. The manufacturer reserves the right to change the design and function of the M2 electric scooter and documents without notice.

2021 Invanti (Beijing) Technology Co., Ltd all rights reserved.

Contact Us

If you encounter any problems when using the product, please feel free to contact us through the following methods or scan the QR code to get a quick response and a satisfactory solution.

Amazon Platform: "Contact Seller"

Email Address: 5thwheel@afterservice.vip

Get 24/7 Customer Service



Use Camera or QR Scanner to Scan

Or Visit: <https://5thwheel.afterservice.vip>

其他纸盒

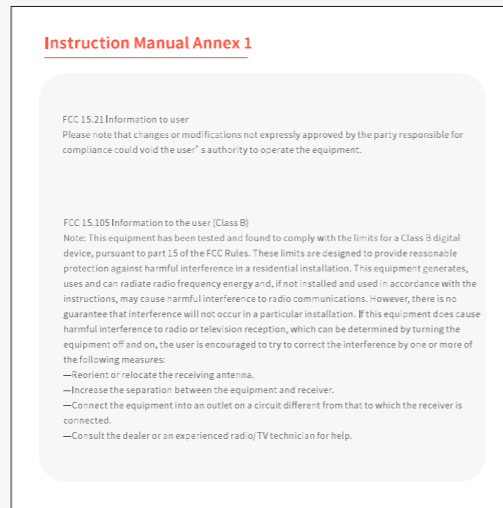
说明书调试卡盒装

尺寸: 145*145mm*10mm
工艺: 黑色哑光卡纸 300g



021Instruction Manual Annex 1 说明书附件

尺寸: 140*140mm
工艺: 150g铜版纸 彩印



适配器包装盒

尺寸: 95*50*165mm
材质: 黑色哑光卡纸 300g



工具包

尺寸: 185*90*10mm
材质: 黑色哑光卡纸 300g

