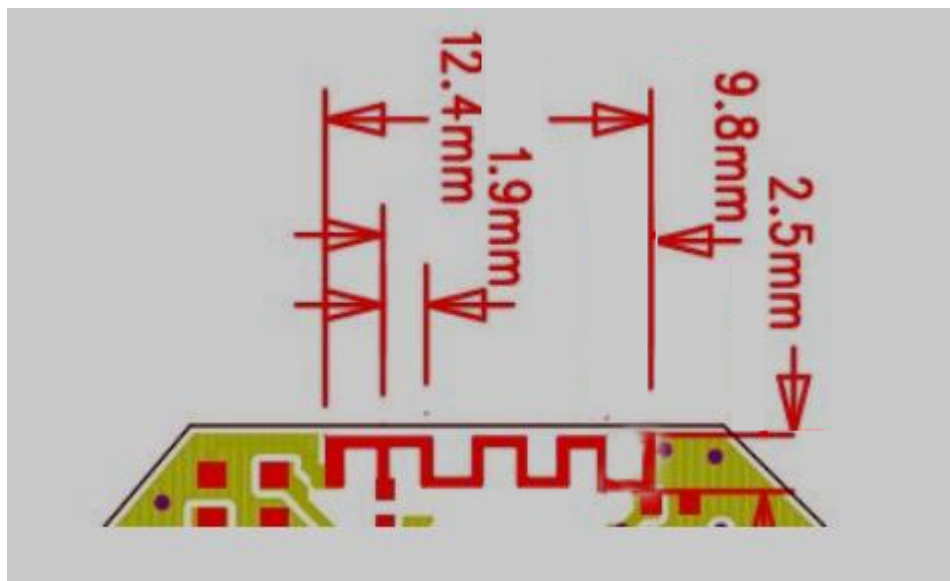


ANTENNA SPECIFICATION

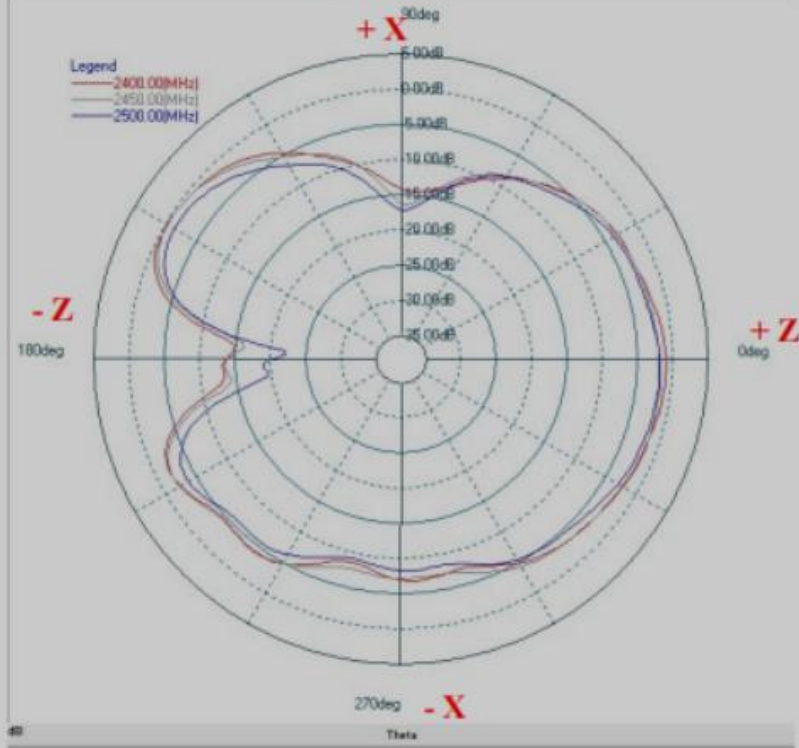
SPECIFICATIONS

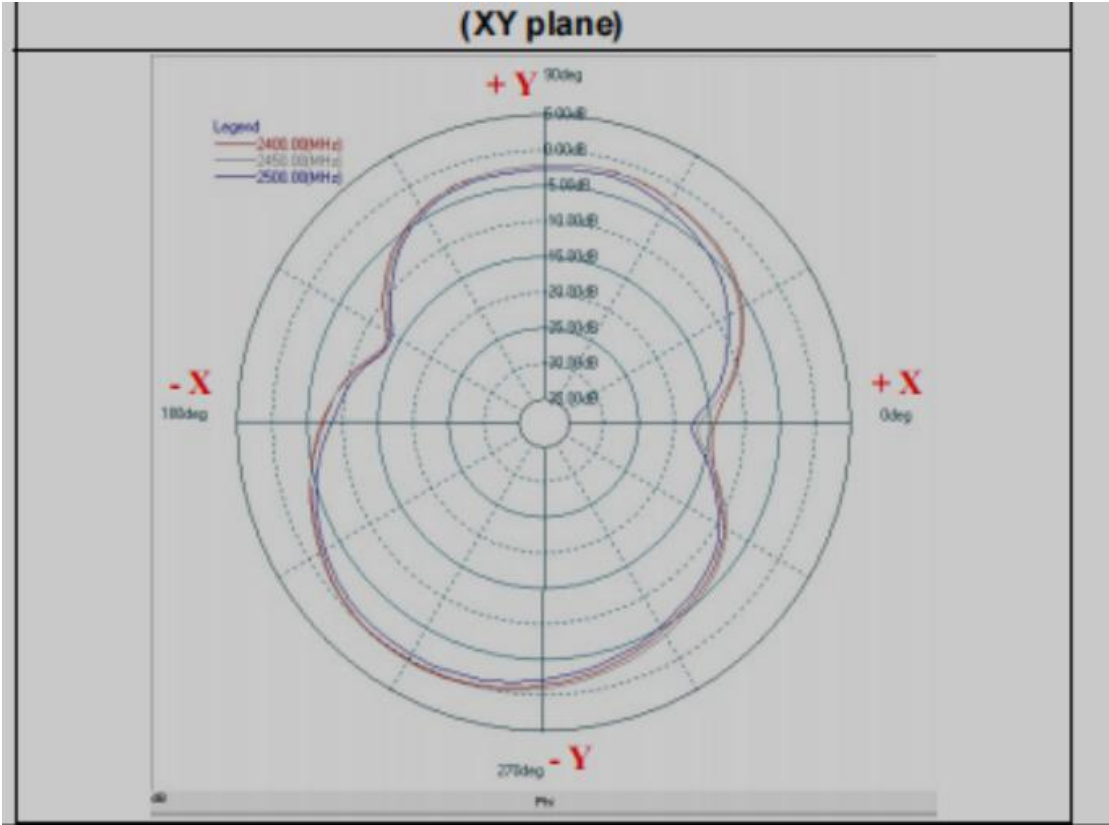
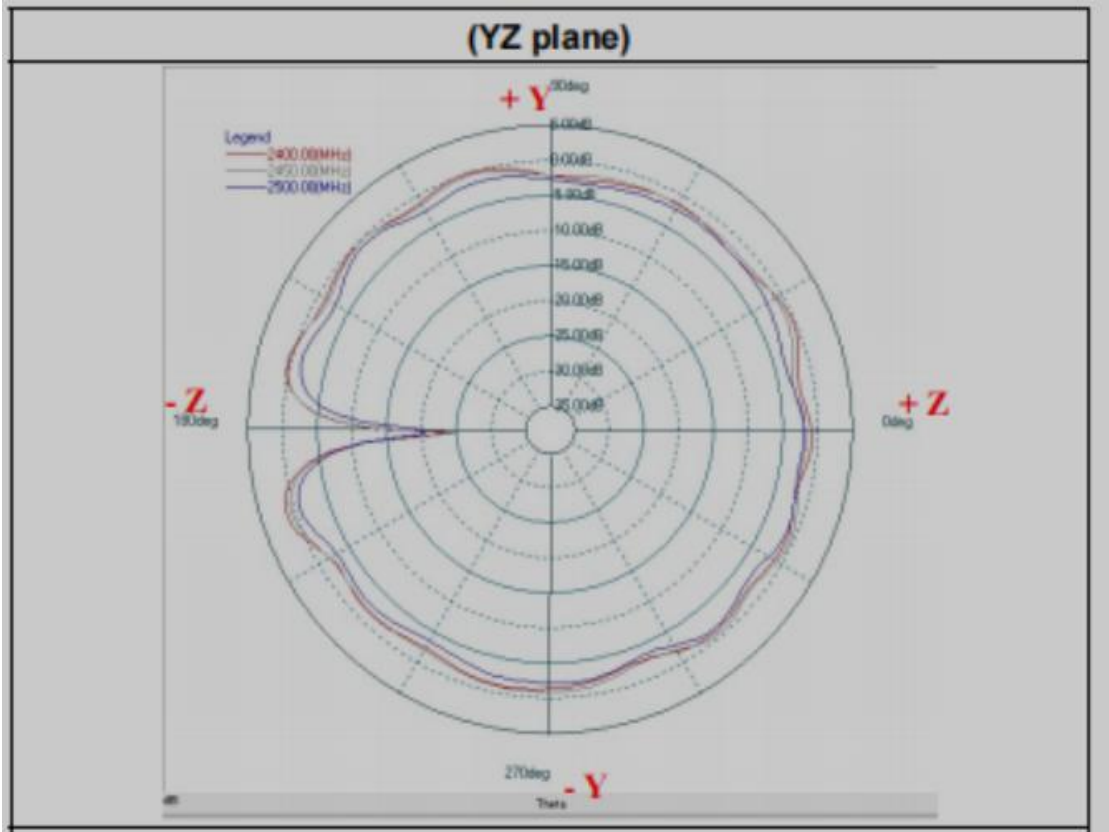
	SPECIFICATION
Working Frequency Range	2400~2500MHz
Gain	1.0dBi (Typical)
VSWR	2.0 max
Polarization	linear
Azimuth Beamwidth	Omni-directional
Impedance	50 Ω
Rated Power(max)	3 Watts
Maximum input Power	5 Watts for 5 minutes
Operation Temperature	-40 $^{\circ}$ C~+85 $^{\circ}$ C

Factory : Solowii (Beijing) Technology Development Co., Ltd
Address : 2002A,Bldg. 1,Yard 2,Ronghua South Rd.,Beijing Economic and Technological Development Zone, Beijing, China



(XZ plane)





Frequency(MHz)	ZX plane		ZY plane		XY plane	
	Max.Value (dBi)	Average (dBi)	Max.Value (dBi)	Average (dBi)	Max.Value (dBi)	Average (dBi)
2400	0.89	-4.72	0.97	-0.64	-0.03	-3.73
2450	-0.11	-4.90	1.00	-0.54	0.20	-3.54
2500	-0.72	-5.43	0.95	-1.00	0.09	-3.77