



# FCC RADIO TEST REPORT

**FCC ID: 2A323-W79**

**Sample :** wireless charger

**Trade Mark :** N/A

**Main Model :** W79

**Additional Model :** W31, W32, W33pro, W33, W34, W35, W36, W37, W40, W55, W56, W57, W58, W59, W60, W61, W62, W63, W64, W65, W66, W67, W68, W69, W70, W71, W72, W73, W74, W75, W76, W77, W78, W80, W81, W82, W83, W84, W85, W86, W87, W88, W89, W90

**Report No. :** UNIA23032211ER-61

## Prepared for

Shenzhen Meskey Technology Co., Ltd

Room 401, Yuanshuo Science Park, Guihua Community, Guanlan, Longhua,  
Shenzhen, China

## Prepared by

Shenzhen United Testing Technology Co., Ltd.

2F, Annex Bldg, Jiahuangyuan Tech Park, #365 Baotian 1 Rd, Tiegang  
Community, Xixiang Str, Bao'an District, Shenzhen, China

## TEST RESULT CERTIFICATION

**Applicant**.....: Shenzhen Meskey Technology Co., Ltd  
**Address**.....: Room 401, Yuanshuo Science Park, Guihua Community, Guanlan, Longhua, Shenzhen, China  
**Manufacturer**.....: Shenzhen Meskey Technology Co., Ltd  
**Address**.....: Room 401, Yuanshuo Science Park, Guihua Community, Guanlan, Longhua, Shenzhen  
**Product description**  
**Product**.....: wireless charger  
**Trade Mark**.....: N/A  
**Model Name**.....: W79, W31, W32, W33pro, W33, W34, W35, W36, W37, W40, W55, W56, W57, W58, W59, W60, W61, W62, W63, W64, W65, W66, W67, W68, W69, W70, W71, W72, W73, W74, W75, W76, W77, W78, W80, W81, W82, W83, W84, W85, W86, W87, W88, W89, W90  
**Test Methods**.....: FCC Rules and Regulations Part 15 Subpart C Section 15.209  
ANSI C63.10: 2013

This device described above has been tested by Shenzhen United Testing Technology Co., Ltd., and the test results show that the equipment under test (EUT) is in compliance with the FCC requirements. And it is applicable only to the tested sample identified in the report.

This report shall not be reproduced except in full, without the written approval of UNI, this document may be altered or revised by Shenzhen United Testing Technology Co., Ltd., personnel only, and shall be noted in the revision of the document.

**Date of Test**.....:  
**Date (s) of performance of tests**.....: Mar. 22, 2023 ~ May. 05, 2023  
**Date of Issue**.....: May. 05, 2023  
**Test Result**.....: Pass

Prepared by:



Jason Ye/Supervisor

Reviewer:



Kelly Cheng/Supervisor

Approved & Authorized Signer:



Liuze/Manager



## Table of Contents

## Pages

1 TEST SUMMARY	4
1.4 ENVIRONMENTAL CONDITIONS	6
2 GENERAL INFORMATION	7
2.1 GENERAL DESCRIPTION OF EUT	7
2.2 CARRIER FREQUENCY OF CHANNELS	8
2.3 TEST MODE	8
3 CONDUCTED EMISSION	11
3.1 TEST LIMIT	11
3.2 TEST SETUP	11
3.3 TEST PROCEDURE	12
3.4 TEST RESULT	12
4 RADIATED EMISSION	15
4.1 TEST LIMIT	15
4.2 TEST SETUP	17
4.3 TEST PROCEDURE	18
4.4 TEST RESULT	18
5 ANTENNA REQUIREMENT	21
6 PHOTO OF TEST	23
6.1 RADIATED EMISSION	23
6.2 CONDUCTED EMISSION	24



## 1 TEST SUMMARY

### 1.1 TEST PROCEDURES AND RESULTS

Item	FCC Rules	Description Of Test	Result
1	FCC Part 15.207	Conducted Emission	Pass
2	FCC Part 15.209	Radiated Emission	Pass
3	FCC Part 15.203	Antenna Requirement	Pass



## 1.2 TEST FACILITY

Test Firm : Shenzhen United Testing Technology Co., Ltd.  
Address : 2F, Annex Bldg, Jiahuangyuan Tech Park, #365 Baotian 1 Rd, Tiegang Community, Xixiang Str, Bao'an District, Shenzhen, China

The testing quality ability of our laboratory meet with "Quality Law of People's Republic of China" Clause 19. The testing quality system of our laboratory meets with ISO/IEC-17025 requirements. This approval result is accepted by MRA of APLAC.

Our test facility is recognized, certified, or accredited by the following organizations:

A2LA Certificate Number: 4747.01

The EMC Laboratory has been accredited by A2LA, and in compliance with ISO/IEC 17025:2017 General Requirements for testing Laboratories.

FCC Registration Number: 0027159896

The EMC Laboratory has been registered and fully described in a report filed with the (FCC) Federal Communications commission.

IC Registration Number: 21947

The EMC Laboratory has been registered and fully described in a report filed with the (IC) Industry Canada.



### 1.3 MEASUREMENT UNCERTAINTY

The reported uncertainty of measurement  $y \pm U$ , where expanded uncertainty  $U$  is based on a standard uncertainty multiplied by a coverage factor of  $k=2$ , providing a level of confidence of approximately 95 %.

#### A. Conducted Measurement:

Test Site	Method	Measurement Frequency Range	U, (dB)	NOTE
UNI	ANSI	9KHz ~ 150KHz	2.96	--
		150KHz ~ 30MHz	2.44	--

#### B. Radiated Measurement:

Test Site	Method	Measurement Frequency Range	U, (dB)	NOTE
UNI	ANSI	9KHz ~ 30MHz	2.50	--
		30MHz ~ 1000MHz	4.80	--
		1000MHz ~ 6000MHz	4.13	--

### 1.4 ENVIRONMENTAL CONDITIONS

During the measurement the environmental conditions were within the listed ranges:

Temperature:	15~35 °C
Relative Humidity:	30~60 %
Air Pressure:	950~1050 hPa



## 2 GENERAL INFORMATION

### 2.1 GENERAL DESCRIPTION OF EUT

Product:	wireless charger
Trade Mark:	N/A
Main Model:	W79
Additional Model:	W31, W32, W33pro, W33, W34, W35, W36, W37, W40, W55, W56, W57, W58, W59, W60, W61, W62, W63, W64, W65, W66, W67, W68, W69, W70, W71, W72, W73, W74, W75, W76, W77, W78, W80, W81, W82, W83, W84, W85, W86, W87, W88, W89, W90
Model Difference:	All model's the function, software and electric circuit are the same, only with a product color and model named different. Test sample model: W79.
FCC ID:	2A323-W79
Operation Frequency:	110-205kHz
Max Field Strength	93.25dBuV/m
Number of Channels:	3CH
Modulation Type:	ASK
Antenna Type:	Coil Antenna
Antenna Gain:	0dBi
Battery:	N/A
Adapter:	N/A
Power Source:	DC 5V/9V from adapter



## 2.2 CARRIER FREQUENCY OF CHANNELS

Channel List					
Channel	Frequency (KHz)	Channel	Frequency (KHz)	Channel	Frequency (KHz)
01	113.5	02	128.0	03	194.3

## 2.3 TEST MODE

NO.	TEST MODE DESCRIPTION
1	Wireless charging Mode(Full load)(Connect to adapter)
2	Wireless charging Mode(Half load) (Connect to adapter)
3	Wireless charging Mode(Null load) (Connect to adapter)

Note: The mode 1 was the worst case and only the data of the worst case record in this report.

## 2.4 TEST SETUP

Operation of EUT during testing:







## 2.5 DESCRIPTION TEST PERIPHERAL AND EUT PERIPHERAL

The EUT has been tested as an independent unit together with other necessary accessories or support units. The following support units or accessories were used to form a representative test configuration during the tests.

Item	Equipment	Mfr/Brand	Model/Type No.	Note
E-1	wireless charger	N/A	W79	EUT
E-2	Adapter	XIAOMI	MDY-08-EF	AE
E-3	WPT Station	N/A	N/A	AE
E-4	Apple Watch S4	APPLE	A1978	AE
E-5	AirPods	APPLE	A2565	AE

Note:

1. The support equipment was authorized by Declaration of Confirmation.
2. All the above equipment/cables were placed in worse case positions to maximize emission signals during emission test.



## 2.6 MEASUREMENT INSTRUMENTS LIST

Item	Equipment	Manufacturer	Model No.	Serial No.	Calibrated until
Conduction Emissions Measurement					
1	Conducted Emission Test Software	EZ-EMC	Ver.CCS-3A1-CE	N/A	N/A
2	AMN	Schwarzbeck	NNLK8121	8121370	2023.09.22
3	AAN	TESEQ	T8-Cat6	38888	2023.09.22
4	Pulse Limiter	CYBRTEK	EM5010	E115010056	2023.05.30
5	EMI Test Receiver	Rohde&Schwarz	ESCI	101210	2023.09.22
Radiated Emissions Measurement					
1	Radiated Emission Test Software	EZ-EMC	Ver.CCS-03A1	N/A	N/A
2	Horn Antenna	Sunol	DRH-118	A101415	2023.09.22
3	Broadband Hybrid Antenna	Sunol	JB1	A090215	2024.02.26
4	PREAMP	HP	8449B	3008A00160	2023.09.22
5	PREAMP	HP	8447D	2944A07999	2023.05.30
6	EMI TEST RECEIVER	Rohde&Schwarz	ESR3	101891	2023.09.22
7	VECTOR Signal Generator	Rohde&Schwarz	SMU200A	101521	2023.09.22
8	Signal Generator	Agilent	E4421B	MY4335105	2023.09.22
9	MXA Signal Analyzer	Agilent	N9020A	MY50510140	2023.09.22
10	MXA Signal Analyzer	Keysight	N9020A	MY51110104	2023.09.22
11	RF Power sensor	DARE	RPR3006W	15I00041SNO88	2023.05.30
12	RF Power sensor	DARE	RPR3006W	15I00041SNO89	2023.05.30
13	RF power divider	Anritsu	K241B	992289	2023.09.22
14	Wideband radio communication tester	Rohde&Schwarz	CMW500	154987	2023.09.22
15	Active Loop Antenna	Com-Power	AL-130R	10160009	2023.05.30
16	Broadband Hybrid Antennas	Schwarzbeck	VULB9163	VULB9163#958	2023.09.22
17	Horn Antenna	Schwarzbeck	BBHA9120D	9120D-1680	2023.05.30
18	Horn Antenna	A-INFOMW	LB-180400-KF	J211060660	2023.09.22
19	Microwave Broadband Preamplifier	Schwarzbeck	BBV 9721	100472	2023.09.22
20	Signal Generator	Agilent	N5183A	MY47420153	2023.09.22
21	Spectrum Analyzer	Rohde&Schwarz	FSP 40	100501	2023.09.22
22	Power Meter	KEYSIGHT	N1911A	MY50520168	2023.09.22
23	Frequency Meter	VICTOR	VC2000	997406086	2023.09.22
24	DC Power Source	HYELEC	HY5020E	055161818	2023.09.22



### 3 CONDUCTED EMISSION

#### 3.1 TEST LIMIT

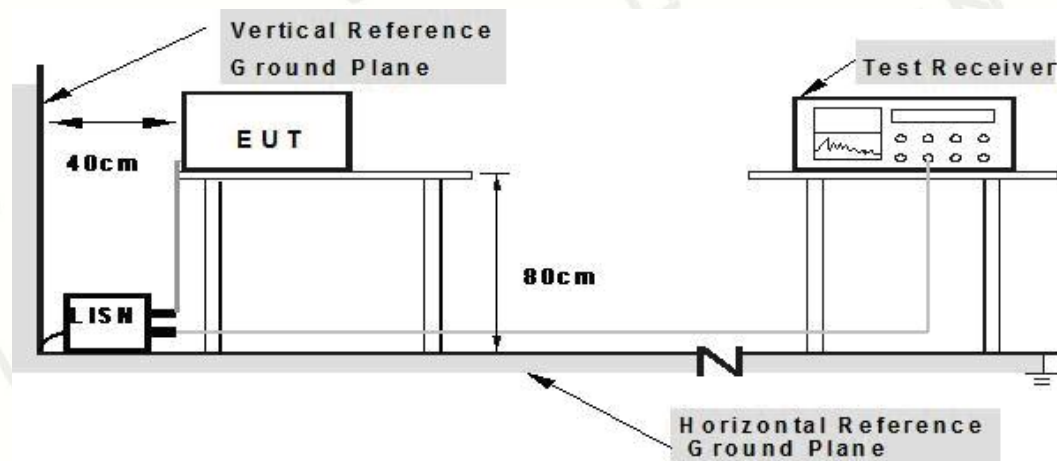
For unintentional device, according to § 15.107(a) Line Conducted Emission Limits is as following

Frequency (MHz)	Maximum RF Line Voltage (dB $\mu$ V)			
	CLASS A		CLASS B	
	Q.P.	Ave.	Q.P.	Ave.
0.15~0.50	79	66	66~56*	56~46*
0.50~5.00	73	60	56	46
5.00~30.0	73	60	60	50

\* Decreasing linearly with the logarithm of the frequency.

For intentional device, according to §15.207(a) Line Conducted Emission Limit is same as above table.

#### 3.2 TEST SETUP



- Note: 1. Support units were connected to second LISN.**  
**2. Both of LISNs (AMN) are 80 cm from EUT and at least 80 from other units and other metal planes**



### 3.3 TEST PROCEDURE

1. The equipment was set up as per the test configuration to simulate typical actual usage per the user's manual. The EUT is placed on a wooden table with a height of 0.8 meters is used and is placed on the ground plane as per ANSI C63.10.
2. Support equipment, if needed, was placed as per ANSI C63.10.
3. All I/O cables were positioned to simulate typical actual usage as per ANSI C63.10.
4. If a EUT received DC power from the USB Port of Notebook PC, the PC's adapter received AC120V/60Hz power through a Line Impedance Stabilization Network (LISN) which supplied power source and was grounded to the ground plane.
5. All support equipments received AC power from a second LISN, if any.
6. The EUT test program was started. Emissions were measured on each current carrying line of the EUT using a spectrum Analyzer / Receiver connected to the LISN powering the EUT. The LISN has two monitoring points: Line 1 (Hot Side) and Line 2 (Neutral Side). Two scans were taken: one with Line 1 connected to Analyzer / Receiver and Line 2 connected to a 50 ohm load; the second scan had Line 1 connected to a 50 ohm load and Line 2 connected to the Analyzer / Receiver.
7. Analyzer / Receiver scanned from 150 KHz to 30MHz for emissions in each of the test modes.

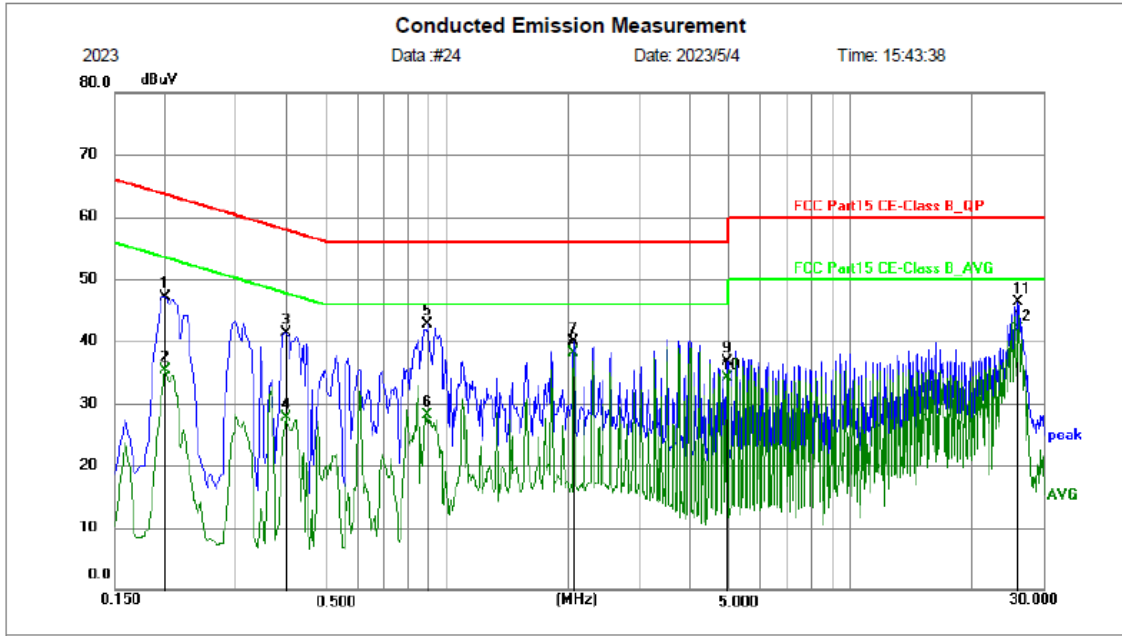
### 3.4 TEST RESULT

PASS

Remark: EUT was tested at AC 120V and 240V, only the worst result of AC 120V was reported.



Temperature:	24°C	Relative Humidity:	48%
Test Date:	May. 04, 2023	Pressure:	1010hPa
Test Voltage:	AC 120V, 60Hz	Phase:	Line
Test Mode:	Transmitting mode 1 of 113.5kHz		

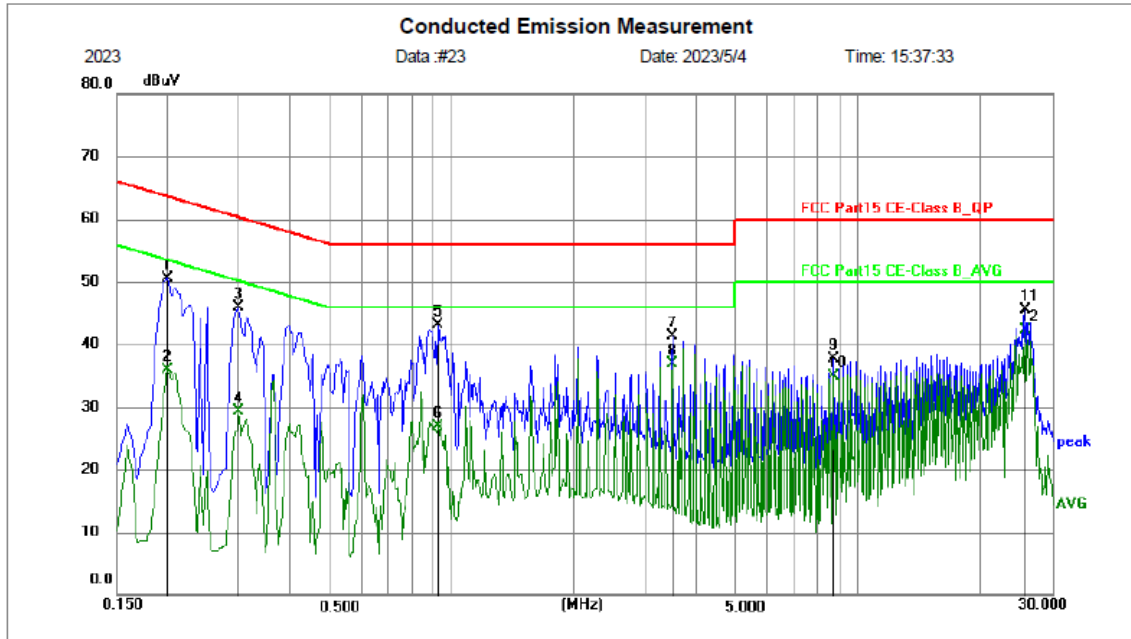


No.	Frequency (MHz)	Reading (dBuV)	Factor (dB)	Level (dBuV)	Limit (dBuV)	Margin (dB)	Detector	P/F	Remark
1	0.1995	37.49	9.71	47.20	63.63	-16.43	peak	P	
2	0.1995	25.55	9.71	35.26	53.63	-18.37	AVG	P	
3	0.3975	31.66	9.64	41.30	57.91	-16.61	peak	P	
4	0.3975	18.06	9.64	27.70	47.91	-20.21	AVG	P	
5	0.8970	33.02	9.59	42.61	56.00	-13.39	peak	P	
6	0.8970	18.50	9.59	28.09	46.00	-17.91	AVG	P	
7	2.0579	30.13	9.71	39.84	56.00	-16.16	peak	P	
8 *	2.0579	28.40	9.71	38.11	46.00	-7.89	AVG	P	
9	4.9470	27.17	9.53	36.70	56.00	-19.30	peak	P	
10	4.9470	24.49	9.53	34.02	46.00	-11.98	AVG	P	
11	25.9305	36.55	9.67	46.22	60.00	-13.78	peak	P	
12	25.9305	32.20	9.67	41.87	50.00	-8.13	AVG	P	

Remark:1. Factor = Insertion Loss + Cable Loss, Result = Reading + Factor, Margin = Result – Limit.  
 2. Phone and Headset and Watch charging together was the worst case and only the data of the worst case record in this report.



Temperature:	24°C	Relative Humidity:	48%
Test Date:	May. 04, 2023	Pressure:	1010hPa
Test Voltage:	AC 120V, 60Hz	Phase:	Neutral
Test Mode:	Transmitting mode 1 of 113.5kHz		



No.	Frequency (MHz)	Reading (dBuV)	Factor (dB)	Level (dBuV)	Limit (dBuV)	Margin (dB)	Detector	P/F	Remark
1	0.1995	40.89	9.71	50.60	63.63	-13.03	peak	P	
2	0.1995	26.24	9.71	35.95	53.63	-17.68	AVG	P	
3	0.2985	36.28	9.68	45.96	60.28	-14.32	peak	P	
4	0.2985	19.59	9.68	29.27	50.28	-21.01	AVG	P	
5	0.9240	33.62	9.57	43.19	56.00	-12.81	peak	P	
6	0.9240	17.38	9.57	26.95	46.00	-19.05	AVG	P	
7	3.4935	31.66	9.58	41.24	56.00	-14.76	peak	P	
8	3.4935	27.23	9.58	36.81	46.00	-9.19	AVG	P	
9	8.7270	28.06	9.67	37.73	60.00	-22.27	peak	P	
10	8.7270	25.28	9.67	34.95	50.00	-15.05	AVG	P	
11	25.8270	35.79	9.67	45.46	60.00	-14.54	peak	P	
12 *	25.8270	32.67	9.67	42.34	50.00	-7.66	AVG	P	

Remark: 1. Factor = Insertion Loss + Cable Loss, Result = Reading + Factor, Margin = Result – Limit.

2. Phone and Headset and Watch charging together was the worst case and only the data of the worst case record in this report.



## 4 RADIATED EMISSION

### 4.1 TEST LIMIT

CFR 47 Part 15, section 15.205

Only spurious emissions are permitted in any of the frequency bands listed the tables in these sections:

MHz	MHz	MHz	GHz
0.090-0.110	16.42-16.423	399.9-410	4.5-5.15
0.495-0.505	16.69475-16.69525	608-614	5.35-5.46
2.1735-2.1905	16.80425-16.80475	960-1240	7.25-7.75
4.125-4.128	25.5-25.67	1300-1427	8.025-8.5
4.17725-4.17775	37.5-38.25	1435-1626.5	9.0-9.2
4.20725-4.20775	73-74.6	1645.5-1646.5	9.3-9.5
6.215-6.218	74.8-75.2	1660-1710	10.6-12.7
6.26775-6.26825	108-121.94	1718.8-1722.2	13.25-13.4
6.31175-6.31225	123-138	2200-2300	14.47-14.5
8.291-8.294	149.9-150.05	2310-2390	15.35-16.2
8.362-8.366	156.52475-156.52525	2483.5-2500	17.7-21.4
8.37625-8.38675	156.7-156.9	2690-2900	22.01-23.12
8.41425-8.41475	162.0125-167.17	3260-3267	23.6-24.0
12.29-12.293	167.72-173.2	3332-3339	31.2-31.8
12.51975-12.52025	240-285	3345.8-3358	36.43-36.5
12.57675-12.57725	322-335.4	3600-4400	(2)
13.36-13.41			

CFR 47 Part 15, section 15.209

The emissions from an intentional radiator shall not exceed the limits in the tables in these sections using an average detector:

Frequency (MHz)	Field strength (microvolts/meter)	Measurement distance (meters)
0.009-0.490	2400/F(kHz)	300
0.490-1.705	24000/F(kHz)	30
1.705-30.0	30	30
30-88	100**	3
88-216	150**	3
216-960	200**	3
Above 960	500	3



Limit calculation and transfer to 3m distance as showed in the following table:

Frequency (MHz)	Limit (dBuV/m)	Distance (m)
0.009-0.490	$20\log(2400/F(\text{KHz})) + 40\log(300/3)$	3
0.490-1.705	$20\log(24000/F(\text{KHz})) + 40\log(30/3)$	3
1.705-30.0	69.5	3
30-88	40.0	3
88-216	43.5	3
216-960	46.0	3
Above 960	54.0	3

CFR 47 Part 15, section 15.35

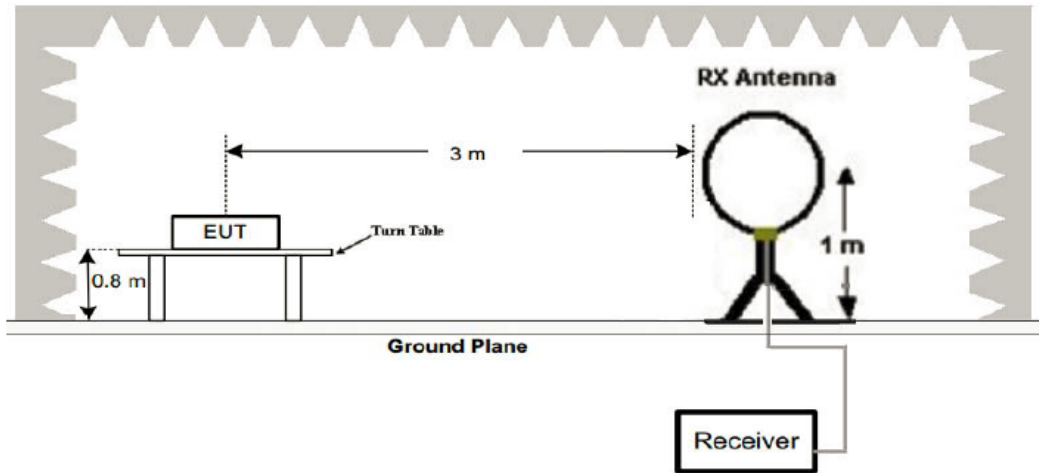
When average radiated emission measurements are specified, the limit on the peak level of the radio Frequency emission is 20dB above the maximum permitted average emission limit.

Transmitter Spurious Emissions 9KHz-30MHz			
	9-150KHz	150-490KHz	490KHz-30MHz
Resolution Bandwidth	200Hz	9KHz	9KHz
Video Bandwidth	2KHz	100KHz	100KHz
Detector	Peak	Peak	Peak
Trace Mode	Max Hold	Max Hold	Max Hold
Sweep Time	Auto	Auto	Auto

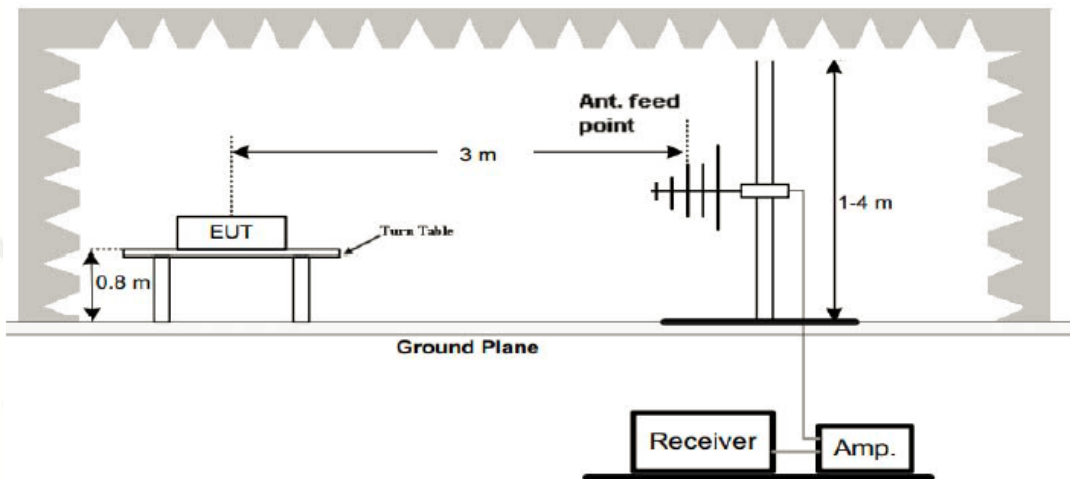


## 4.2 TEST SETUP

### 1. Radiated Emission Test-Up Frequency Below 30MHz



### 2. Radiated Emission Test-Up Frequency 30MHz~1GHz





### 4.3 TEST PROCEDURE

1. Measurement distance is 3m.
2. For the measurement range up to 30MHz in the following plots the field strength result from 3m.
3. Distance measurement are extrapolated to 300m and 30m distance respectively, by 40dB/decade. According to part 15.31(f)(2), per antenna factor scaling.
4. Measurements below 1000MHz are performed with a peak detector and compared to average limits. Measurements with an average detector are not required.

Note:

For battery operated equipment, the equipment tests shall be performed using a new battery.

### 4.4 TEST RESULT

PASS

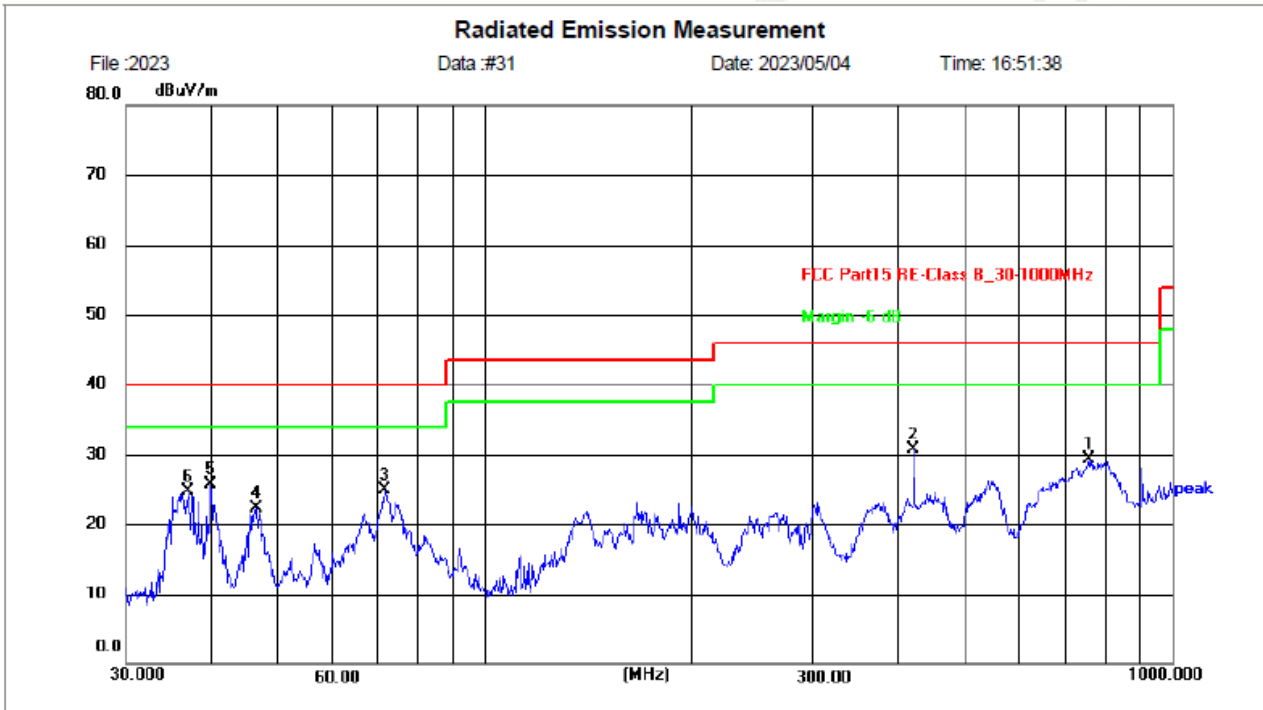
For 9KHz-30MHz Test Results:

Frequency (MHz)	Detector Mode (PK/QP)	Reading (dBuV)	Factor (dB)	Actual FS (dBuV/m)	Limits 3m (dBuV/m)	Margin (dBuV/m)
0.1135	PK	77.77	15.48	93.25	106.5	-12.58
0.128	PK	68.11	15.98	84.09	105.46	-17.3
0.1943	PK	61.75	16.2	77.95	101.83	-19.23
2.693	PK	27.57	15.2	42.77	69.5	-26.73
5.78	PK	26.53	15.68	42.21	69.5	-27.29
8.963	PK	26.72	15.6	42.32	69.5	-27.18



For 30MHz-1GHz Test Results:

Temperature:	24°C	Relative Humidity:	48%
Test Date:	May. 04, 2023	Pressure:	1010hPa
Test Voltage:	AC 120V, 60Hz	Phase:	Horizontal
Test Mode:	Transmitting mode 1 of 113.5kHz		

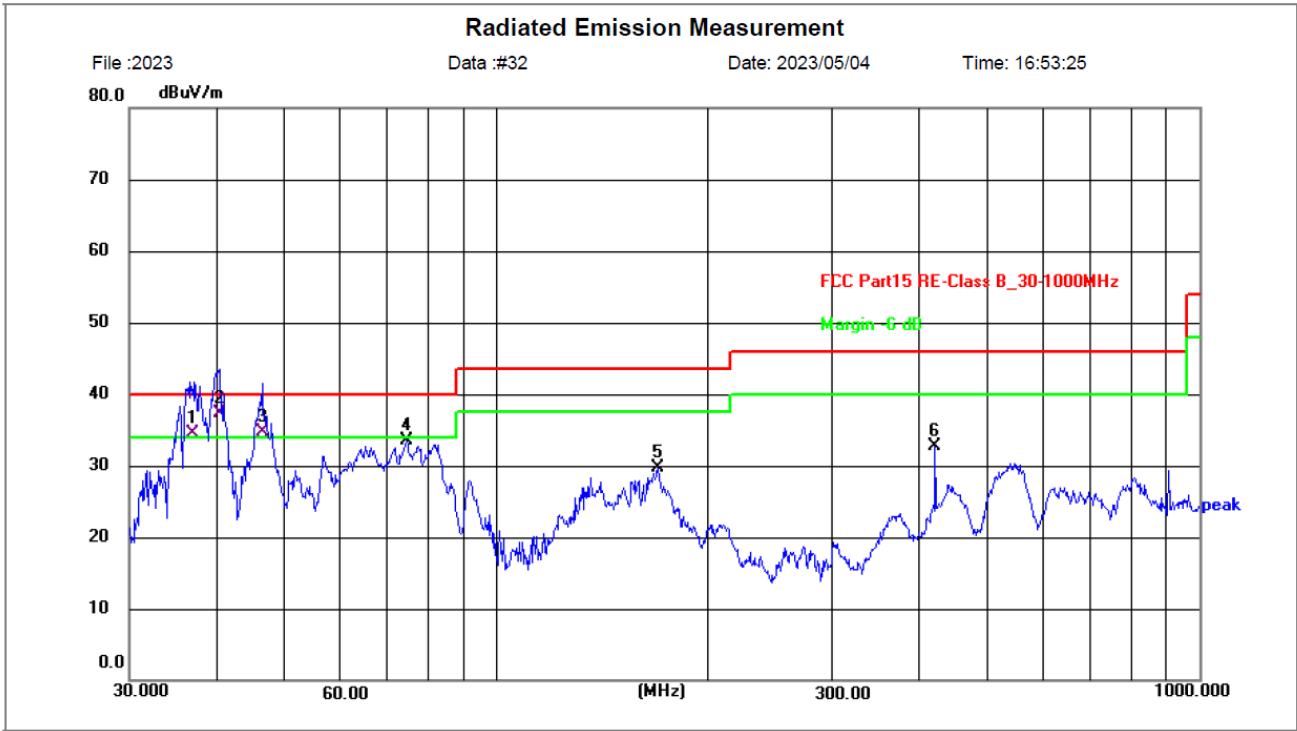


No.	Frequency (MHz)	Reading (dBuV)	Factor (dB/m)	Level (dBuV/m)	Limit (dBuV/m)	Margin (dB)	Detector	Height (cm)	Azimuth (deg.)	P/F	Remark
1	755.3873	35.06	-5.69	29.37	46.00	-16.63	peak	100	222	P	
2	420.5803	43.27	-12.64	30.63	46.00	-15.37	peak	100	28	P	
3	71.3300	43.98	-19.09	24.89	40.00	-15.11	peak	100	213	P	
4	46.5030	38.53	-16.16	22.37	40.00	-17.63	peak	100	164	P	
5 *	39.8542	41.49	-15.72	25.77	40.00	-14.23	peak	100	222	P	
6	36.8953	40.92	-16.15	24.77	40.00	-15.23	peak	100	213	P	

Remark: Absolute Level = Reading Level + Factor, Margin = Absolute Level – Limit  
 Factor = Ant. Factor + Cable Loss – Pre-amplifier



Temperature:	24°C	Relative Humidity:	48%
Test Date:	May. 04, 2023	Pressure:	1010hPa
Test Voltage:	AC 120V, 60Hz	Phase:	Vertical
Test Mode:	Transmitting mode 1 of 113.5kHz		



No.	Frequency (MHz)	Reading (dBuV)	Factor (dB/m)	Level (dBuV/m)	Limit (dBuV/m)	Margin (dB)	Detector	Height (cm)	Azimuth (deg.)	P/F	Remark
1 !	37.0248	50.64	-16.14	34.50	40.00	-5.50	QP	100	162	P	
2 *	40.2757	53.01	-15.71	37.30	40.00	-2.70	QP	100	41	P	
3 !	46.3402	50.94	-16.14	34.80	40.00	-5.20	QP	100	299	P	
4	74.3955	52.82	-19.31	33.51	40.00	-6.49	peak	100	3	P	
5	169.5990	46.08	-16.39	29.69	43.50	-13.81	peak	100	41	P	
6	420.5803	45.31	-12.64	32.67	46.00	-13.33	peak	100	1	P	

Remark: Absolute Level = Reading Level + Factor, Margin = Absolute Level – Limit  
Factor = Ant. Factor + Cable Loss – Pre-amplifier

Remark:

- \* denotes emission frequency which appearing within the Restricted Bands specified in provision of 15.205, then the general radiated emission limits in 15.209 apply.
- The IF bandwidth of EMI Test Receiver between 30MHz to 1GHz was 120KHz, 1 MHz for measuring above 1 GHz, below 30MHz was 10KHz.
- Phone and Headset and Watch charging together was the worst case and only the data of the worst case record in this report.



## 5 ANTENNA REQUIREMENT

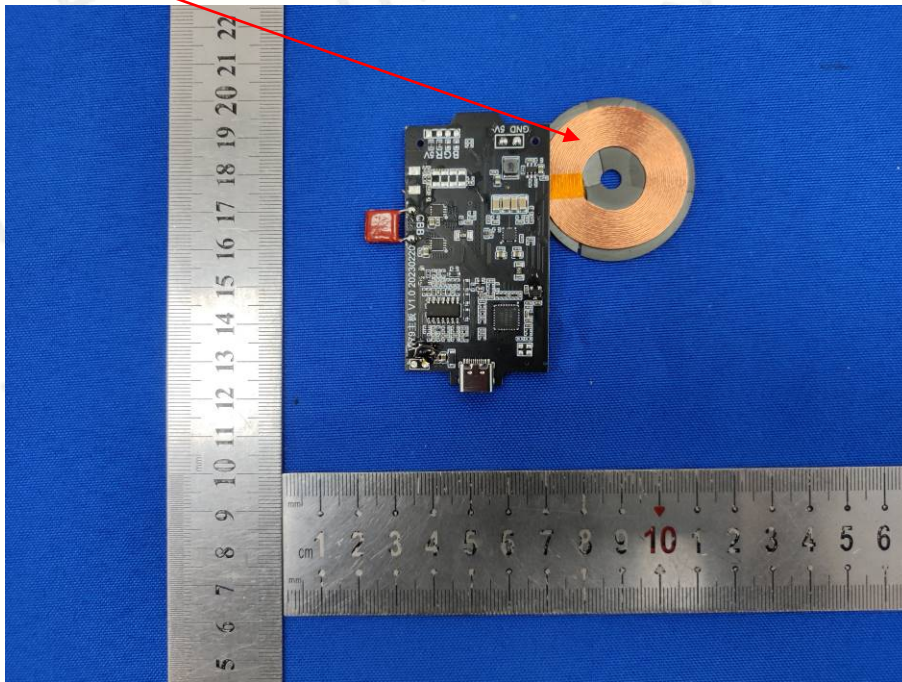
Standard Applicable:

For intentional device, according to FCC 47 CFR Section 15.203, an intentional radiator shall be designed to ensure that no antenna other than that furnished by the responsible party shall be used with the device.

Antenna Connected Construction:

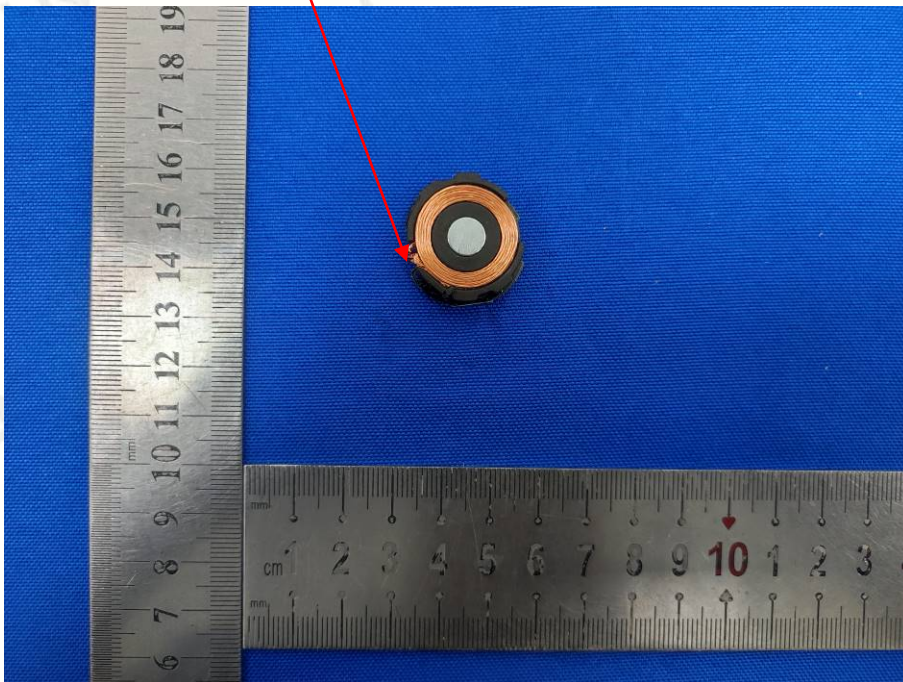
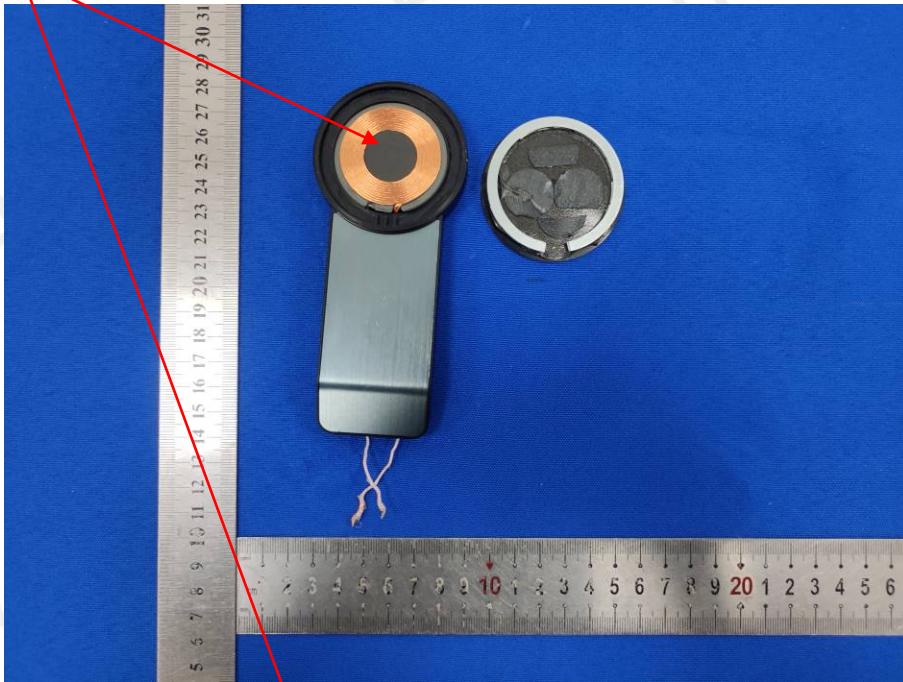
The antenna used in this product is Coil Antenna, The directional gains of antenna used for transmitting is 0dBi.

ANTENNA:





ANTENNA:





## 6 PHOTO OF TEST

### 6.1 RADIATED EMISSION





## 6.2 CONDUCTED EMISSION



\*\*\*End of Report\*\*\*