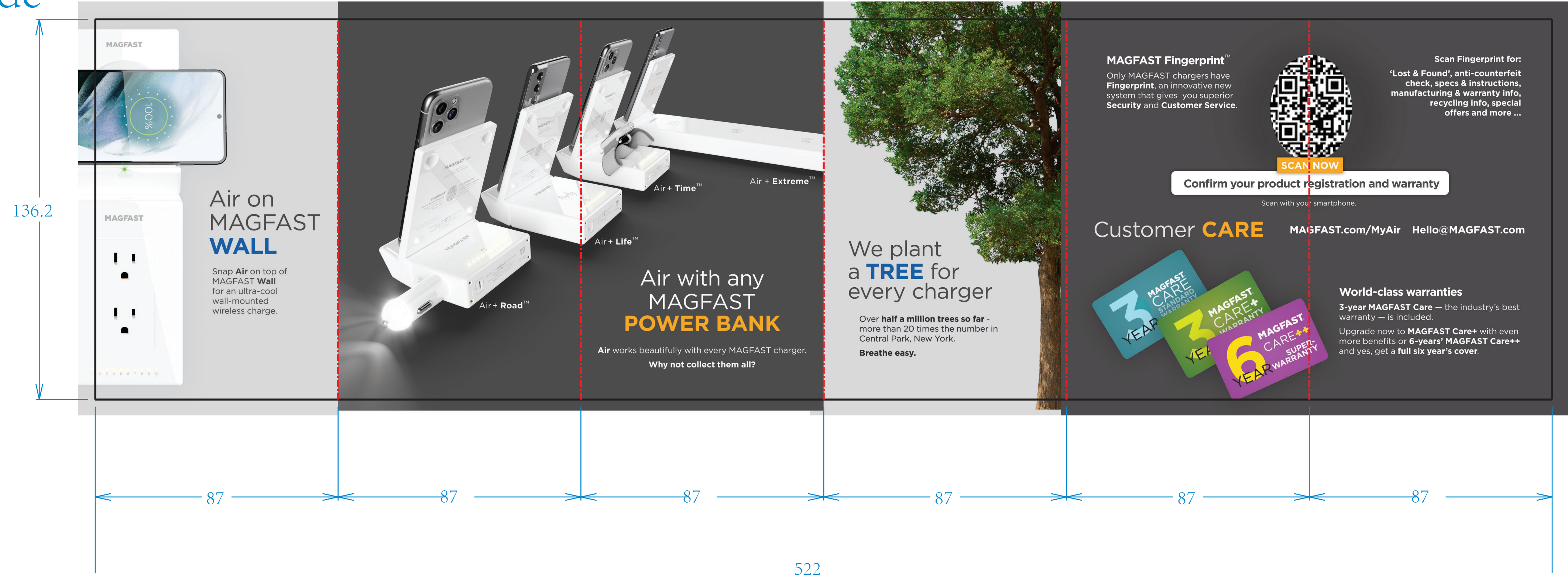


AIR
Collateral Marketing
CMAR-PPP-AC-UU-PP-UU-01

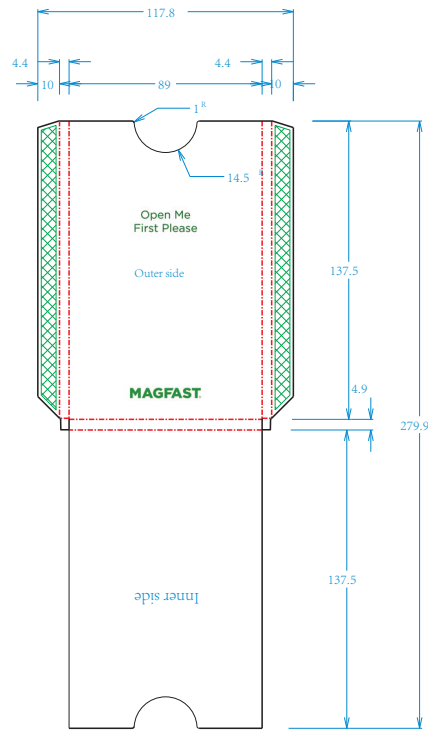
1st Side



2nd Side



Collateral sleeve
CMAR-PPP-AC-UU-PP-UU-01



Collateral Compliance
CCOM-PPP-UU-UU-PP-UU-01

This is now a FIVE (5) Panel, folded piece

1st Side

Safety & Customer Service

AIR
SBNP-PP-AC-UU-PP-UU-01

QUICKSTART GUIDE

Welcome to the MAGFAST® Family!

If you're looking for help getting started with your gorgeous new MAGFAST® charger or power bank, there's a Quickstart guide just for you at: MAGFAST.com/Quickstart

YOUR SAFETY

PLEASE READ THE ENTIRE QUICK BEGONE FIRST USING YOUR NEW MAGFAST PRODUCT!

Your safety is our first priority.

Our goal here isn't just to cover the minimum information required by law, but to provide content and education about how to **stay safe using electronic products.**

CUSTOMER SERVICE

MAGFAST.com/contact

info@MAGFAST.com

(855) 624-3278

MAGFAST
Magnum Advanced Group LLC

SAFETY STARTS HERE

Here are some important points about charging safety. There's more information on how to handle electronics safely in the SAFETY SPECIFICS section that follows on the next page.

⚠️ Intentionally safe use warnings

The output from chargers and power banks for small portable devices is low voltage. That means these devices are unlikely during normal handling of a phone, a tablet or a MAGFAST device. Your MAGFAST charger or power bank is designed to handle the type of device it's charging, unless it's an AC adapter power bank. However, the latter is made so your power bank **must be treated with care** (see below) and you must **never** connect a charging device's output to a power source.

⚠️ Handle with Care: High Voltages and Batteries

The output from AC adapters, desktop chargers is 110 to 240 volts. That's always enough to deliver a nasty shock, and can cause tissue injury or death, and is **extremely** to touch **electricity with respect**. Because chargers that plug into a wall outlet (such as MAGFAST® Wall) or any AC adapter power bank handle both high-voltage electricity and knowledge power out, there is a real danger! They are designed to only deliver a low voltage, but they may burn you, and which can **explode if heated, crushed, or exposed to excessive temperatures.**

MAGFAST® Extreme™ has a special 12 volt port at one end, capable of delivering over 500 volts. That's a major hazard, one that **can** **Extreme** to other such low-voltage USB-C & USB-A ports. You must never connect a power bank or jump-start a vehicle. As you can imagine, this high-voltage port could be used to start your car. **⚠️** **Never** use any jump into the 12VDC to charge a vehicle, and **never** use the internal MAGFAST jumper cables which are specifically designed for use with MAGFAST® Extreme.

SAFETY SPECIFICS

Which safety information is relevant to the MAGFAST product I own?

The details below fall into four different groups, providing safety and compliance information for:

1. All products in the MAGFAST family	Wall, Extreme, Life, Air, Road, Time, Ties, Plug-in-Cable, Jammers
2. MAGFAST products powered for plugging into domestic 110-240V power	Wall, Plug-in-Cable, Jammers
3. MAGFAST products powered for plugging into a battery	Extreme, Life, Road, Time
4. MAGFAST products with a jump-start capability	Extreme

1. INFORMATION FOR ALL PRODUCTS IN THE MAGFAST FAMILY

The safety and certification details in this section relate to all products in the MAGFAST family: MAGFAST® Wall®, Extreme®, Life®, Air®, Road® and Time®.

Staying Safe

For the safety of anyone using your MAGFAST charger, keep it away from water or corrosion sources. Avoid exposure to heat sources, including direct sunlight, which may cause damage to your MAGFAST product.

NEVER operate any MAGFAST product if it has been dropped or damaged.

NEVER place any circumstances attempt to open the case of your MAGFAST product. It can be dangerous and **will** void **all** product warranties. **There are no user-replaceable components inside.** If you're experiencing a problem, contact your physician or medical device manufacturer for medical information on using their equipment in the presence of magnets and/or other electronic devices.

Magnetic Fields

The magnets and Qi wireless coils can degrade the magnetic strip on bank cards and other magnetic data storage devices (to watch those before you pay taxes).

Notices

CE Compliance Statement

This equipment has been tested and complies with the requirements of the EMC Directive (2014/53/EU) and the Low Voltage Directive (2011/65/EU).

RF Compliance Statement

RFCE compliance statement has been tested (1) This device should not cause harmful interference and (2) this device must accept any interference received, including interference that may cause undesired operation.

NEVER

operate any MAGFAST product if it has been dropped or damaged.

NEVER place any circumstances attempt to open the case of your MAGFAST product. It can be dangerous and **will** void **all** product warranties. **There are no user-replaceable components inside.** If you're experiencing a problem, contact your physician or medical device manufacturer for medical information on using their equipment in the presence of magnets and/or other electronic devices.

Magnetic Fields

The magnets and Qi wireless coils can degrade the magnetic strip on bank cards and other magnetic data storage devices (to watch those before you pay taxes).

Notices

CE Compliance Statement

This equipment has been tested and complies with the requirements of the EMC Directive (2014/53/EU) and the Low Voltage Directive (2011/65/EU).

RF Compliance Statement

RFCE compliance statement has been tested (1) This device should not cause harmful interference and (2) this device must accept any interference received, including interference that may cause undesired operation.

Magnetic Fields

The magnets and Qi wireless coils can degrade the magnetic strip on bank cards and other magnetic data storage devices (to watch those before you pay taxes).

Notices

CE Compliance Statement

This equipment has been tested and complies with the requirements of the EMC Directive (2014/53/EU) and the Low Voltage Directive (2011/65/EU).

RF Compliance Statement

RFCE compliance statement has been tested (1) This device should not cause harmful interference and (2) this device must accept any interference received, including interference that may cause undesired operation.

2nd Side

<p>The firsts for Part 15 of the FCC Regulations are designed to provide reasonable protection against harmful interference in a residential environment.</p> <p>The equipment generates, uses, and can radiate radio frequency energy and, if not used in accordance with the instructions, may cause interference to radio communications. It is your responsibility to take steps to prevent such interference. It is your responsibility to take steps to prevent such interference. It is your responsibility to take steps to prevent such interference.</p> <p>Changes or modifications to this product not authorized by MAGFAST could void the electromagnetic compatibility (EMC) and wireless compliance and will negate your ability to operate the product.</p> <p>If warning by FCC shows the equipment complies with FCC radiation exposure limits set for a portable equipment. During the operation of the equipment, the following instructions must be followed to ensure the safety of the user and the equipment:</p> <ul style="list-style-type: none">• Do not use the equipment in the presence of flammable or explosive materials.• Do not use the equipment in the presence of flammable or explosive materials.• Do not use the equipment in the presence of flammable or explosive materials. <p>CE European Conformity</p> <p>This product complies with the radio interference requirements of the European Community. This product can be used across EU member states.</p>	<p>⚠️ Resulting</p> <p>MAGFAST equipment is designed to serve you for a long time. When it's time for it to be replaced, it's your responsibility to replace it with a new one. Do not use a replacement that is not a MAGFAST product. Do not use a replacement that is not a MAGFAST product.</p> <p>⚠️ European Union Disposal Information</p> <p>According to many local laws and regulations, your product should be disposed of properly. Do not throw it away in a landfill or a collection point designated by local authorities. The equipment is not to be disposed of in a landfill or a collection point designated by local authorities. The equipment is not to be disposed of in a landfill or a collection point designated by local authorities.</p> <p>⚠️ California Proposition 65</p> <p>This product can expose you to lead, which is known to the state of California to cause cancer. For more information, visit www.P65Warnings.ca.gov</p> <p>2. INFORMATION FOR MAGFAST PRODUCTS POWERED BY PLUGGING INTO DOMESTIC 110-240V POWER</p> <p>Like other products in the family, MAGFAST Wall has high-voltage domestic power. If you have MAGFAST Wall, you must read the safety information in this section as well as the safety information above for all MAGFAST products.</p> <p>Notices</p> <p>See product books for various compliance and safety ratings and information. See the MAGFAST® "Quickstart" on any MAGFAST product for detailed information.</p>	<p>Safety and Usage</p> <p>Like other products in the MAGFAST family, Wall includes a transformer to convert national power (110V/240V AC) to the required power used by USB devices (5VDC/2A). There are components in the high-voltage side and separate wiring to convert the low-voltage side. If you have MAGFAST Wall, you must read the safety information in this section as well as the safety information above for all MAGFAST products.</p> <p>DO NOT plug Wall into any external power if it is damaged.</p> <p>MAGFAST Wall is designed for use with standard 110V/240V AC. It is not designed for use with other types of power. DO NOT plug Wall into a Ground-Fault Circuit Interrupter (GFCI) power outlet. The safety between power and the product is different from the standard three-wire system used in homes and outdoors. Wall is not compatible with GFCI outlets.</p> <p>3. INFORMATION FOR MAGFAST PRODUCTS WITH A BATTERY</p> <p>All MAGFAST power banks comply with UL requirements and are not to be used for anything other than charging. The product is designed to be used for charging only. Do not use the product for anything other than charging. Do not use the product for anything other than charging.</p> <p>4. INFORMATION FOR MAGFAST PRODUCTS WITH A JUMP-START CAPABILITY</p> <p>MAGFAST Extreme is designed for use with standard 110V/240V AC. It is not designed for use with other types of power. DO NOT plug Extreme into a Ground-Fault Circuit Interrupter (GFCI) power outlet. The safety between power and the product is different from the standard three-wire system used in homes and outdoors. Extreme is not compatible with GFCI outlets.</p>	<p>Operating Safety</p> <p>Like other products in the family, MAGFAST Extreme is designed for use with standard 110V/240V AC. It is not designed for use with other types of power. DO NOT plug Extreme into a Ground-Fault Circuit Interrupter (GFCI) power outlet. The safety between power and the product is different from the standard three-wire system used in homes and outdoors. Extreme is not compatible with GFCI outlets.</p> <p>4. INFORMATION FOR MAGFAST PRODUCTS WITH A JUMP-START CAPABILITY</p> <p>MAGFAST Extreme is designed for use with standard 110V/240V AC. It is not designed for use with other types of power. DO NOT plug Extreme into a Ground-Fault Circuit Interrupter (GFCI) power outlet. The safety between power and the product is different from the standard three-wire system used in homes and outdoors. Extreme is not compatible with GFCI outlets.</p>	<p>engine and must be used with great caution. MAGFAST has advised a series of safety measures, including use of high-quality lithium-ion batteries and power banks. Always use the correct type of battery and power bank. Always use the correct type of battery and power bank. Always use the correct type of battery and power bank.</p> <p>DO NOT use Extreme or your Jammers for another jump-start, if either are still warm.</p> <p>LEGAL STUFF</p> <p>MAGFAST®, "MagFAST", "Life", "Air", "Road", "Time", "Plug-in-Cable", and "Jumpstart" are trademarks of Magnum Advanced Group LLC and are used by MAGFAST.</p> <p>Patent, warranty and other legal information at: MAGFAST.com/legal</p>
87	87	87	87	87
435				