



Global Product Certification
EMC-EMF Safety Approvals

Melbourne
176 Harrick Road
Keilor Park, Vic 3042
Tel: +61 3 9365 1000

Sydney
Unit 3/87 Station Road
Seven Hills, NSW 2147
Tel: +61 2 9624 2777

Email: emc-general@emctech.com.au
Web: www.emctech.com.au

APPENDIX C INTERNAL IDENTIFICATION PHOTOGRAPHS

Test Report Number: S210607-1

FCC ID: 2A2XF-DC130

Tested For: Imaxeon Pty Ltd
Device under Test: WGM160p WIFI module
Model Number: WGM160P22N
Serial Number: 418070010

Issue Date: 30th August 2021

EMC Technologies Pty Ltd reports apply only to the specific samples tested under stated test conditions. It is the manufacturer's responsibility to assure that additional production units of this model are manufactured with identical electrical and mechanical components. EMC Technologies Pty Ltd shall have no liability for any deductions, inferences or generalisations drawn by the client or others from EMC Technologies Pty Ltd issued reports. This report shall not be used to claim, constitute or imply product endorsement by EMC Technologies Pty Ltd.



Accreditation No.5292



Accredited for compliance with ISO/IEC 17025 – Testing
NATA is a signatory to the ILAC Mutual Recognition Arrangement for the mutual recognition of the equivalence of testing, calibration, inspection and proficiency testing scheme providers reports.

REVISION TABLE

Version	Sec/Para Changed	Change Made	Date
1		Initial issue of document	08/07/2021
2		FCC ID Updated	30/08/2021



This document may only be reproduced in full.

APPENDIX C1 INTERNAL IDENTIFICATION PHOTOGRAPHS



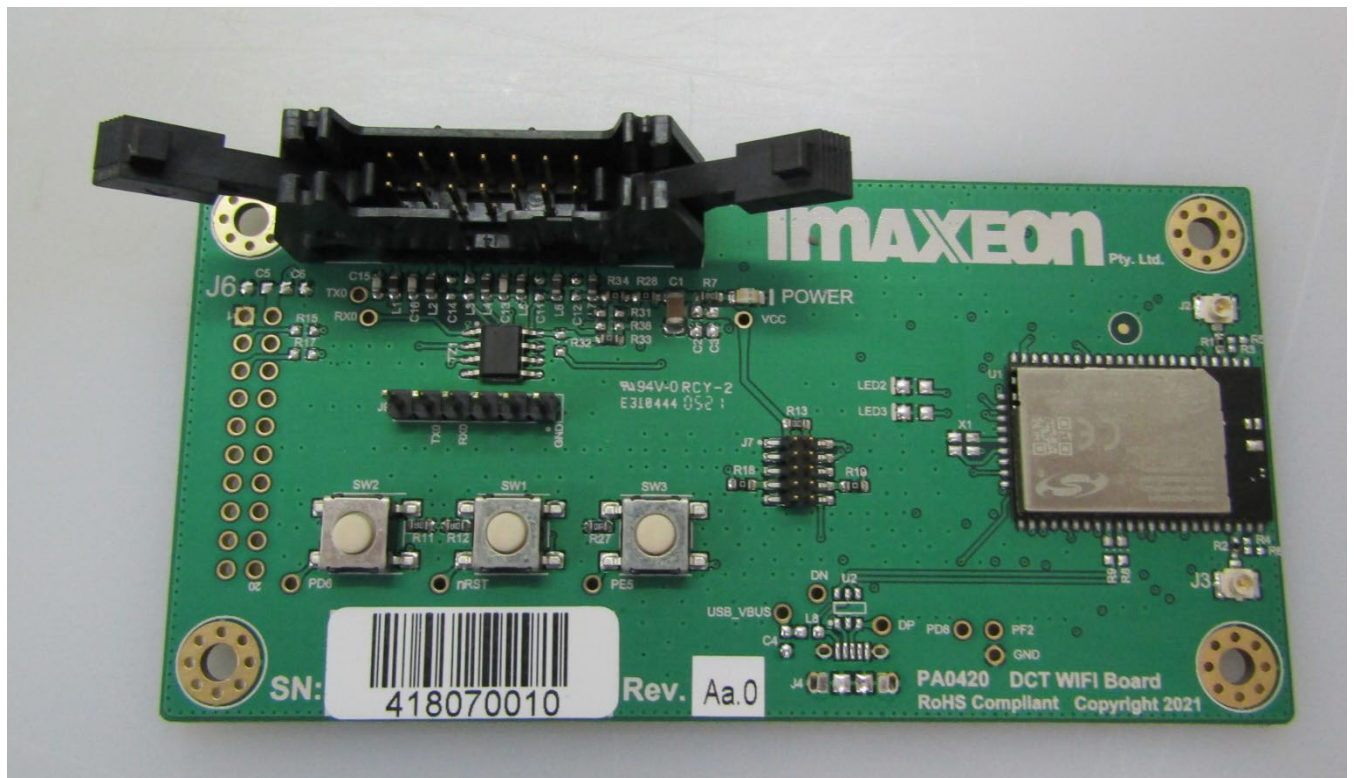
APPENDIX C2 INTERNAL IDENTIFICATION PHOTOGRAPHS



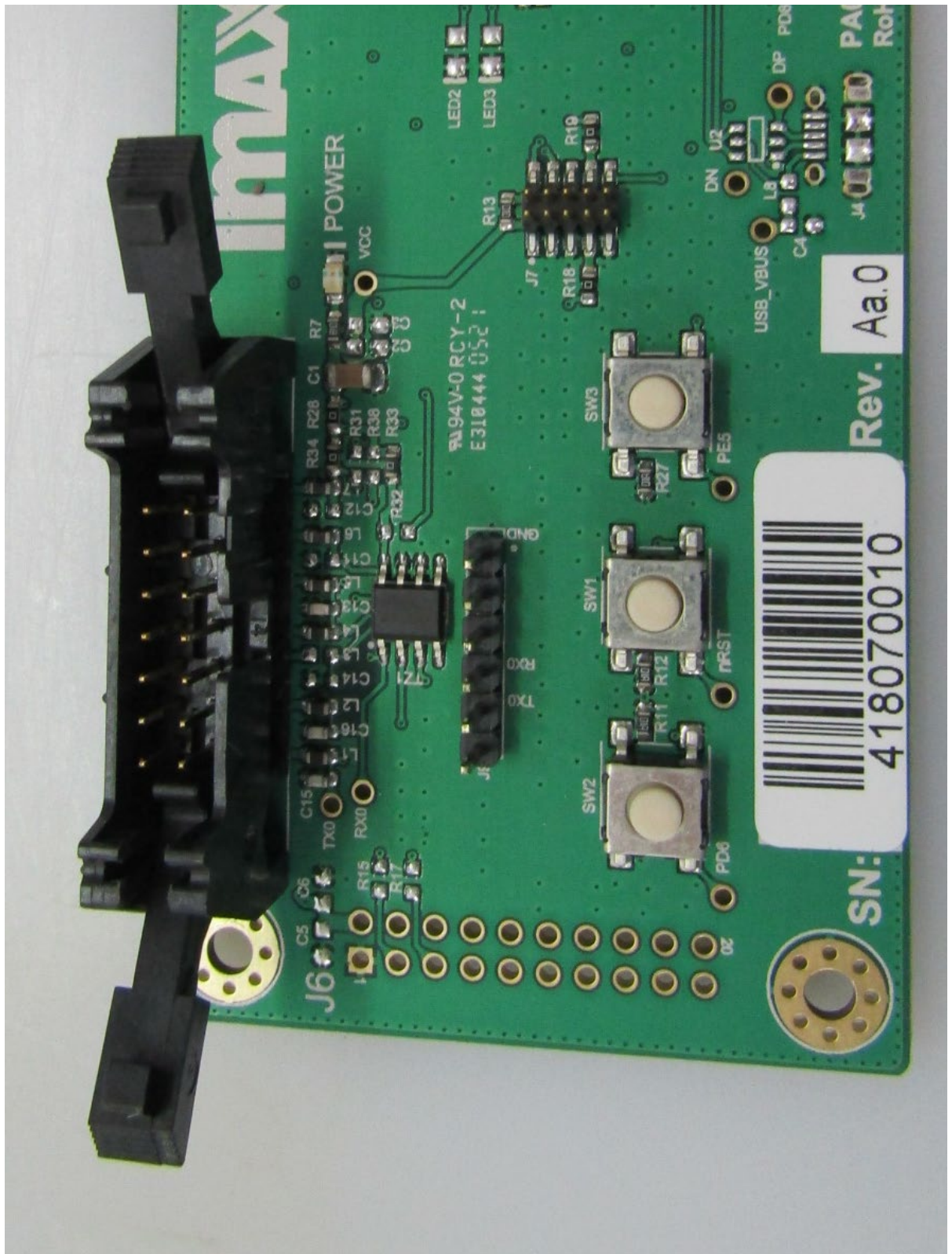
Accreditation No.5292

This document may only be reproduced in full.

APPENDIX C3 INTERNAL IDENTIFICATION PHOTOGRAPHS



APPENDIX C4 INTERNAL IDENTIFICATION PHOTOGRAPHS



This document may only be reproduced in full.



This document may only be reproduced in full.