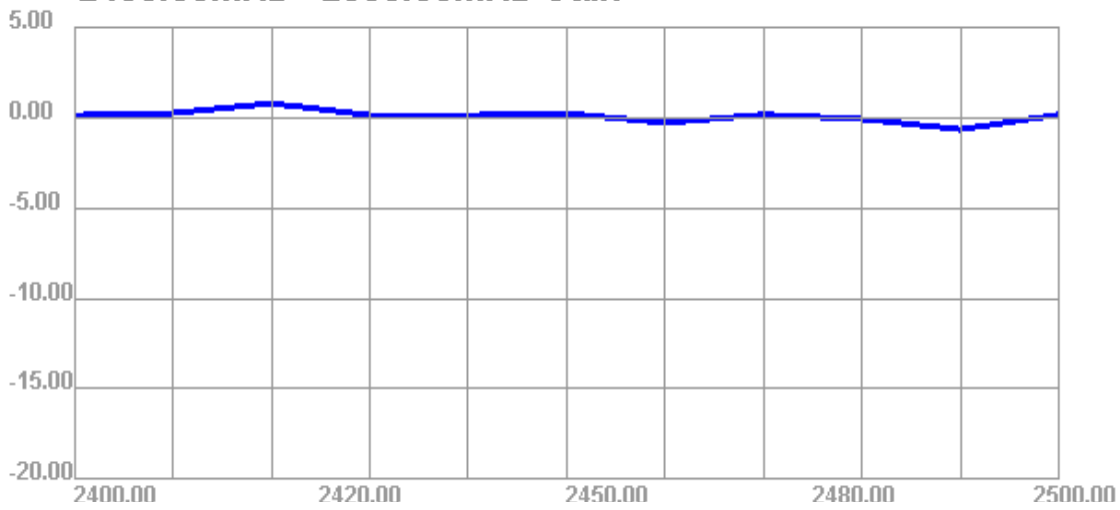
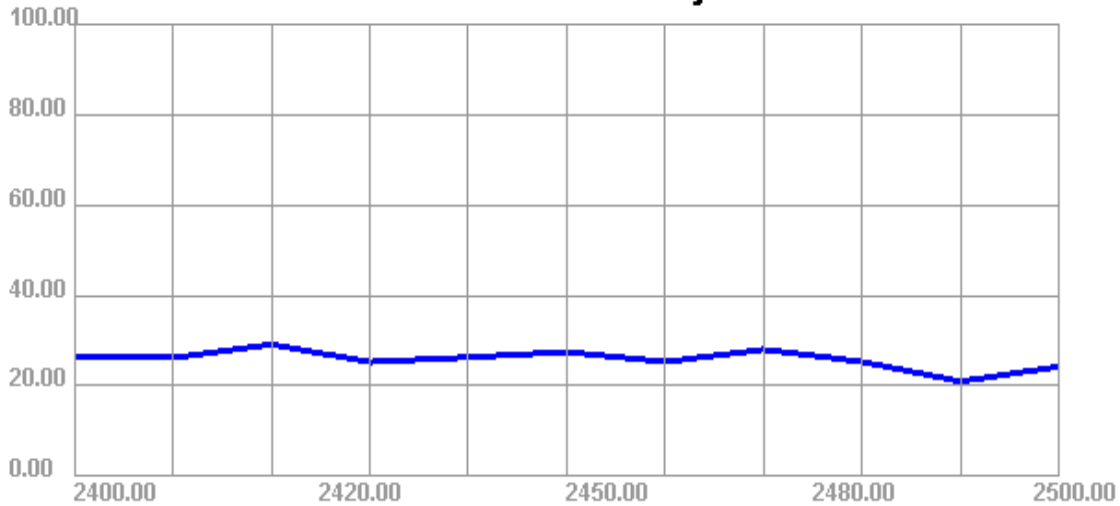


Passive Test For BT2.4								
Freq (MHz)	Effi (%)	Effi (dB)	Gain (dBi)	Gain (dBd)	UHS (%)	DHIS (%)	Max (dB)	Min (dB)
2400	26.32	-5.8	0.13	-2.02	9.775	16.545	0.13	-25.29
2410	26.23	-5.81	0.25	-1.9	9.885	16.348	0.25	-33.08
2420	29.18	-5.35	0.78	-1.37	11.049	18.136	0.78	-28.31
2430	25.3	-5.97	0.13	-2.02	9.571	15.732	0.13	-24.1
2440	26.34	-5.79	0.13	-2.02	9.925	16.416	0.13	-20.75
2450	27.52	-5.6	0.22	-1.93	10.399	17.122	0.22	-20.74
2460	25.33	-5.96	-0.29	-2.44	9.602	15.73	-0.29	-22.05
2470	28.07	-5.52	0.16	-1.99	10.688	17.378	0.16	-20.53
2480	25.36	-5.96	-0.08	-2.23	9.62	15.741	-0.08	-19.3
2490	21.02	-6.77	-0.65	-2.8	7.91	13.11	-0.65	-20.6
2500	24.29	-6.15	0.16	-1.99	8.982	15.312	0.16	-19.6

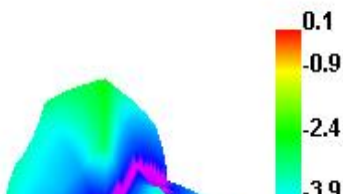
2400.00MHz - 2500.00MHz Gain



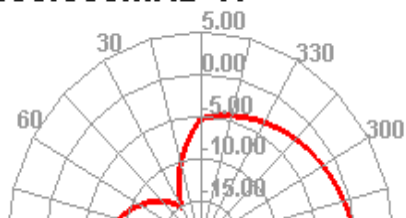
2400.00MHz - 2500.00MHz Efficiency

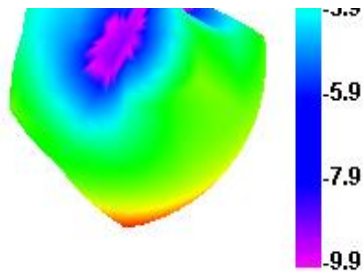


2400.000MHz

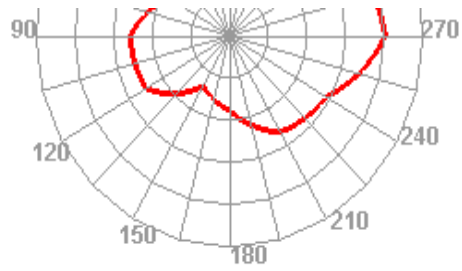
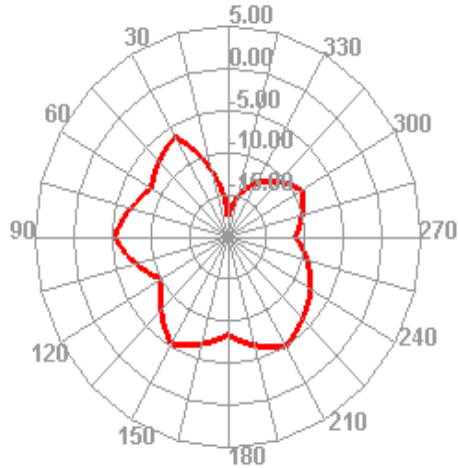


2400.000MHz H

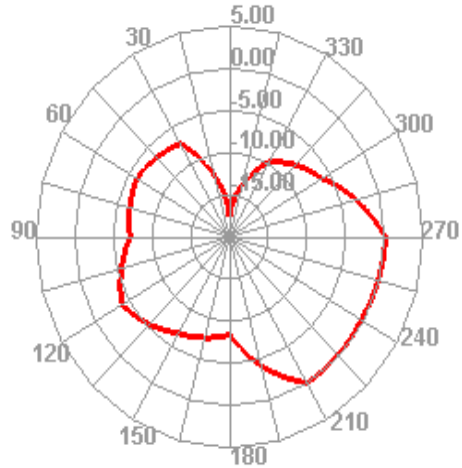




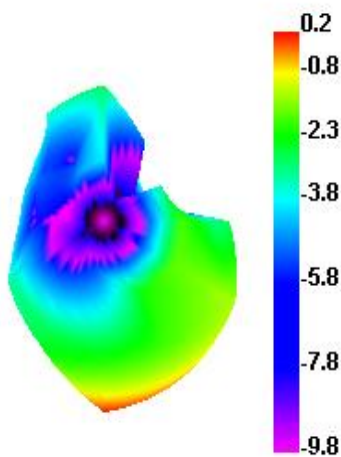
2400.000MHz E1



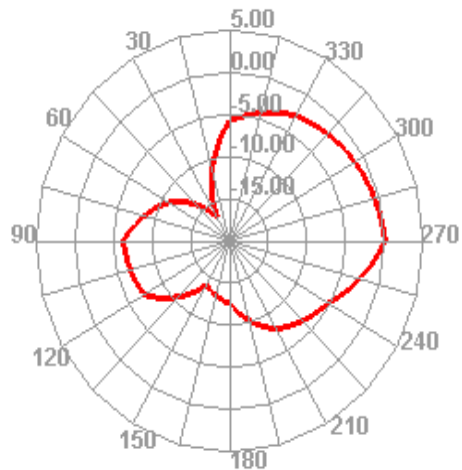
2400.000MHz E2



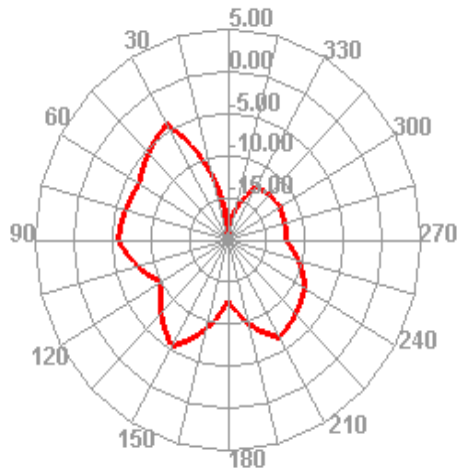
2450.000MHz



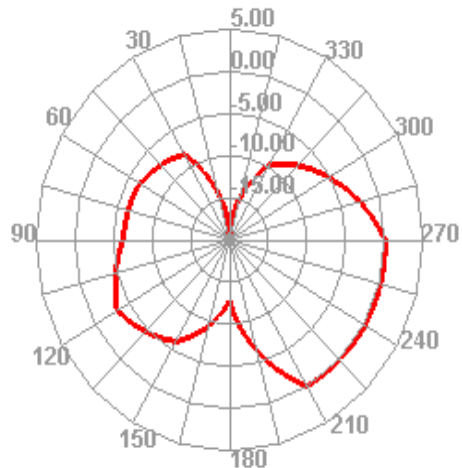
2450.000MHz H



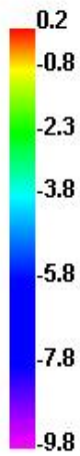
2450.000MHz E1



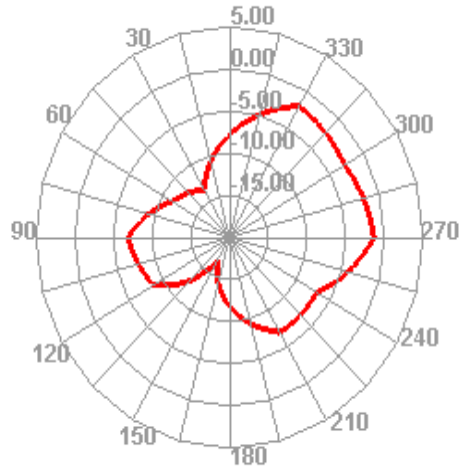
2450.000MHz E2



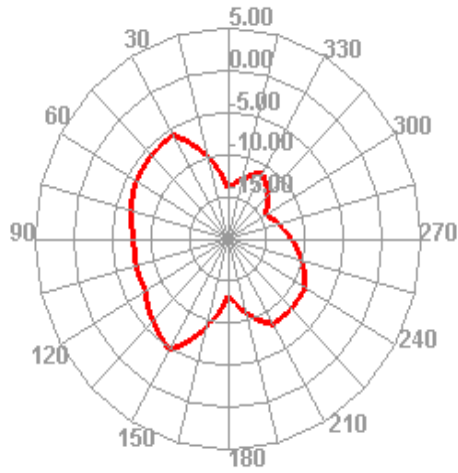
2500.000MHz



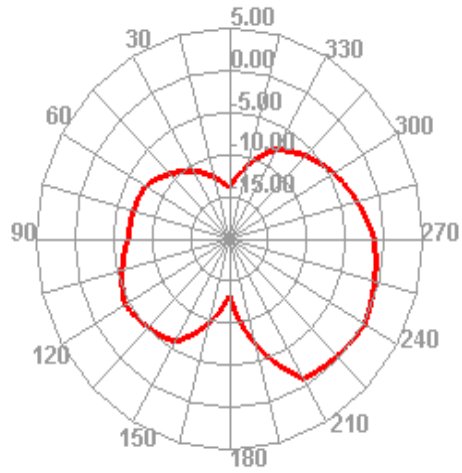
2500.000MHz H



2500.000MHz E1



2500.000MHz E2



Directivity (dBi)	Beamwidth (3dB)	AttH (dB)	AttV (dB)
5.92	30	47.36	46.86
6.06	0	47.4	46.9
6.13	0	47.28	46.76
6.1	0	47.35	46.78
5.92	60	47.15	46.65
5.83	60	47.33	46.85
5.68	60	47.72	47.22
5.68	60	47.36	46.93
5.88	0	47.56	47.1
6.12	0	47.05	46.67
6.31	120	47.01	46.63

Application Information	
04Version	5.243.347
TotalTime	4m 25s 957ms
AdditionalInfor	NULL

