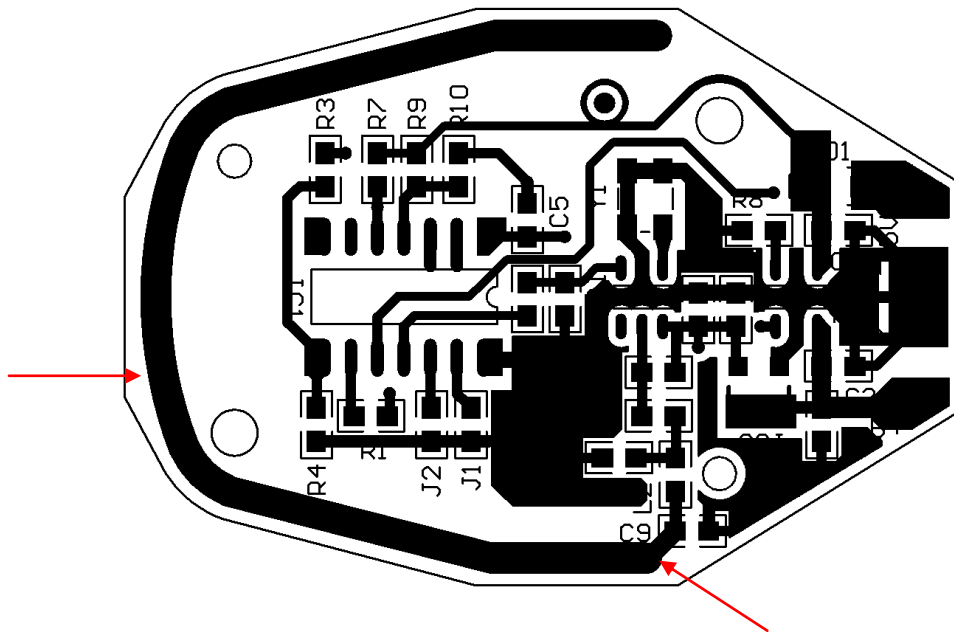


W0109 antenna picture

Transmitter: The thick line of the entire C shape along the edge of the PCB pointed by the arrow is the transmitting antenna, with a length of 63.5mm and a width of 1.5mm.



Receiver: The thick U-shaped line along the edge of the PCB pointed by the arrow is the receiving antenna, with a length of 83.6mm and a width of 1.2mm.

