



Video Doorbell Pro and Wi-Fi HomeBase (Battery Powered)

Quick Start Guide

TABLE OF CONTENTS

01	What's Included	P01
02	Product Overview	P02-P03
03	How The System Works	P04
04	Powering on the Wi-Fi HomeBase	P05
05	Setting up the System	P06
06	Charging Your Doorbell	P07
07	Finding a Mounting Spot	P08
08	Mounting the Bracket	P09
09	Mounting the Doorbell	P10
10	Detaching the Doorbell	P11
11	Recharging the Doorbell	P12
12	Notice	P13-P16

Please download the "aosu" App and then add devices before installing doorbell.

What's Included



Video Doorbell Pro



Mounting Bracket



Screw Hole
Positioning-Card



Doorbell Detaching Pin



Wi-Fi HomeBase



Phillips-Head
Screwdriver



USB-C Charging
Cable



Security Sticker



Screw Packs



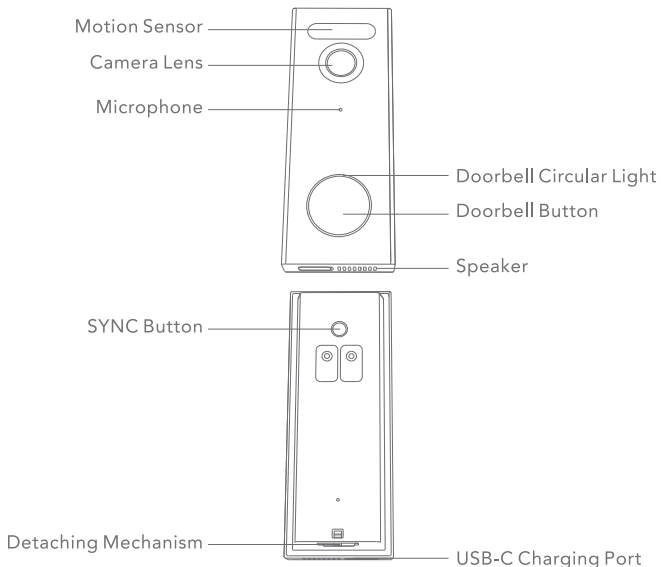
Wi-Fi HomeBase
Power Pin



Quick Start Guide

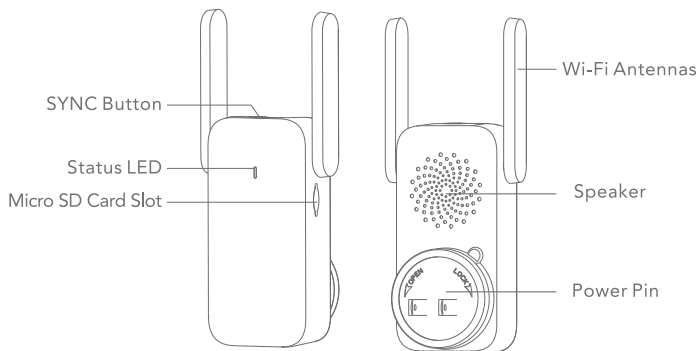
Product Overview

Video Doorbell (Battery or Hardwired)



Operation	How-to
Power on the doorbell	Press and release the SYNC button
Power off the doorbell	Press and hold the SYNC button for 3 seconds.
Reset the doorbell	Press and hold the SYNC button for 10 seconds.
Connect to Wi-Fi network	Press and hold the SYNC button until you hear a beep

Wi-Fi HomeBase



How The System Works

How the System Works

The video doorbell system includes 2 parts:

- The video doorbell at your door
- The Wi-Fi Homebase in your house

The video doorbell detects motion at your porch and allows you to answer the door anytime and anywhere. The Wi-Fi Homebase stores video clips on a microSD card (user provides it) and works as an indoor digital chime. When someone rings the doorbell, people in the house will be notified.



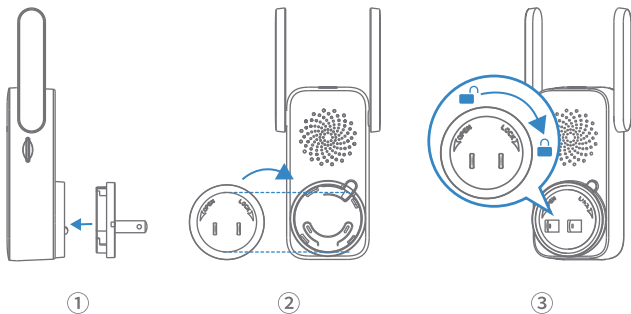
Powering on the Wi-Fi Doorbell Chime

1. Fix the power connector to Wi-Fi Homebase

- 1.1 Place the power connector over Wi-Fi Homebase in the direction the arrows indicate.
- 1.2 Align the raised slots of the power connector with the notch on the base of the Wi-Fi Homebase.
- 1.3 Rotate clockwise to lock the power connector in place.

2. Extend Wi-Fi Homebase's antennas.

3. Plug Wi-Fi Homebase into an AC power supply at your desired location. The LED indicator turns solid green when the doorbell chime is ready for setup.



Setting up the System

Download the App and Set up the System

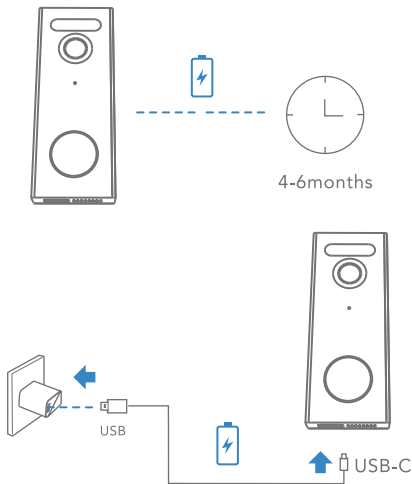
1. Download the aosu App from the App Store (iOS devices) or Google Play (Android devices).
2. Scan the QR code below or search "aosu" in the App Store or Google Play.



Register or log into the App. Add Video Doorbell and scan the QR code for later installation process.

Charging Your Doorbell

The doorbell comes with an 80% battery level for safe transportation. Fully charge it before mounting the doorbell at your front door.



Notice : The battery life varies depending on usage. In most common cases, a doorbell may have up to 10 events per day and each recording lasts 20 seconds on average. Under this scenario, the doorbell battery life can last up to 6 months.

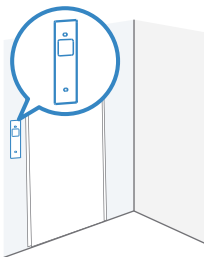
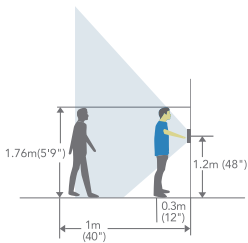
Finding a Mounting Spot

Take the Video Doorbell to your front door and check the live view on the aosu App at the same time. Find a position where you can get the desired field of view.

Consider the below factors:

1. Check if you can reuse the existing holes and anchors on the wall or door frame.
2. If you want to place the doorbell close to a side wall, make sure the wall doesn't show up in the field of view. Otherwise IR light will be reflected and night vision will become blurry.
3. If you are drilling the mounting holes for the first time the recommended mounting height is 48" / 1.2m from the ground.

Place the Screw Hole Positioning Card against the wall to mark the position.

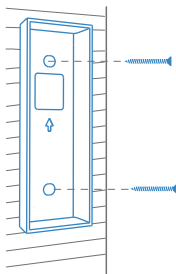


Mounting the Bracket

1. If you're mounting the doorbell on a surface made out of hard materials, like brick, concrete, stucco, drill 2 holes through the Screw Hole Positioning Card with 15/64"(6mm) drill bit.
2. Insert the provided anchors, and then use the provided long screws to secure the Mounting Bracket on the wall.

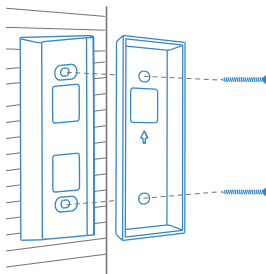
What is required: Power Drill, 15/64"(6mm) Drill Bit, Mounting Bracket, Screw Packs.

Without 15° Mounting Wedge



Mounting Bracket

With 15° Mounting Wedge

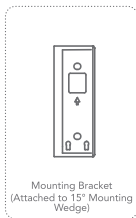


Mounting Wedge Mounting Bracket

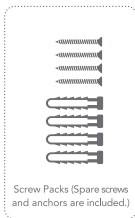
What is required:



Power Drill
(not provided)



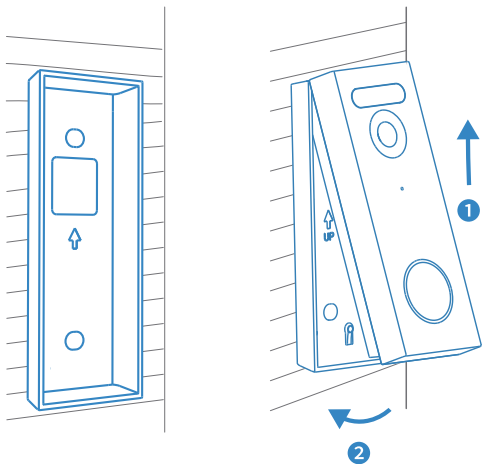
Mounting Bracket
(Attached to 15° Mounting
Wedge)



Screw Packs (Spare screws
and anchors are included.)

Mounting the Doorbell

Align the doorbell with the top of the mount and then snap the bottom into place.



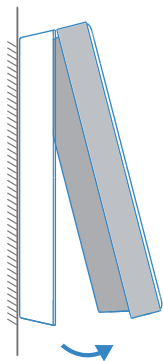
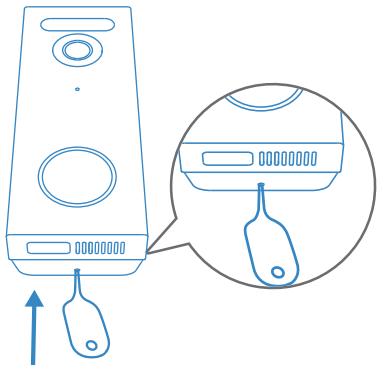
You're all set!

If you want to detach the doorbell or recharge it, please refer to the following sections.

Detaching the Doorbell

1. Use the doorbell detaching pin provided if you wish to detach the doorbell from the Mounting Bracket.
2. Insert and press the detaching pin into the hole on the bottom of the doorbell and then lift to take the bottom of the doorbell off.

What is required: Doorbell Detaching Pin

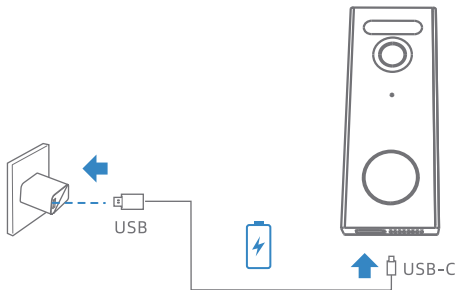


What is required:



Recharging the Doorbell

Charge the doorbell with universal USB chargers that deliver 5V 1A/2A output.



LED indication	Charging: The blue light flashes
	Fully charged: Solid blue
Charging time	6 hours from 0% to 100%

Notice

FCC Statement

This device complies with Part 15 of the FCC Rules. Operation is subject to the following two conditions: (1) this device may not cause harmful interference, and (2) this device must accept any interference received, including interference that may cause undesired operation.

Warning: Changes or modifications not expressly approved by the party responsible for compliance could void the user's authority to operate the equipment. Note: This equipment has been tested and found to comply with the limits for a Class B digital device, pursuant to Part 15 of the FCC Rules. These limits are designed to provide reasonable protection against harmful interference in a residential installation.

This equipment generates uses and can radiate radio frequency energy and, if not installed and used in accordance with the instructions, may cause harmful interference to radio communications. However, there is no guarantee that interference will not occur in a particular installation. If this equipment does cause harmful interference to radio or television reception, which can be determined by turning the equipment off and on, the user is encouraged to try to correct the interference by one or more of the following measures: (1) Reorient or relocate the receiving antenna. (2) Increase the separation between the equipment and receiver. (3) Connect the equipment into an outlet on a circuit different from that to which the receiver is connected. (4) Consult the dealer or an experienced radio/ TV technician for help.

FCC Radio Frequency Exposure Statement

The device has been evaluated to meet general RF exposure requirements. The device can be used in fixed/mobile exposure condition. The min separation distance is 20cm.

IC Caution:

User manuals for licence-exempt radio apparatus shall contain the following or equivalent notice in a conspicuous location in the user manual or alternatively on the device or both.

This device complies with Industry Canada licence-exempt RSS standard(s). Operation is subject to the following two conditions:

- (1) this device may not cause interference, and
- (2) this device must accept any interference, including interference that may cause undesired operation of the device.

Le présent appareil est conforme aux CNR d'Industrie Canada applicables aux appareils radio exempts de licence. L'exploitation est autorisée aux deux conditions suivantes :

- (1) l'appareil ne doit pas produire de brouillage, et
- (2) l'utilisateur de l'appareil doit accepter tout brouillage radioélectrique subi, même si le brouillage est susceptible d'en compromettre le fonctionnement.

IC SAR Warning:

This equipment should be installed and operated with minimum distance 20 cm between the radiator and your body.

Lors de l'installation et de l'exploitation de ce dispositif, la distance entre le radiateur et le corps est d'au moins 20 cm.



This product complies with the radio interference requirements of the European Community.

Declaration of Conformity

Hereby, Glazero Limited declares that this device is in compliance with the essential requirements and other relevant provisions of Directive 2014/53/EU. For the declaration of conformity, visit the Web site: <https://www.aosulife.com/>. This product can be used across EU member states.

Do not use the Device in the environment at too high or too low temperature, never expose the Device under strong sunshine or too wet environment.

The suitable temperature for HomeBase and accessories is -10°C-45°C.

The suitable temperature for Video Doorbell and accessories is -20°C - 40°C .

When charging, please place the device in an environment that has a normal room temperature and good ventilation.

It is recommended to charge the device in an environment with a temperature that ranges from 5°C~25°C.

RF exposure information: The Maximum Permissible Exposure (MPE) level has been calculated based on a distance of $d=20$ cm between the device and the human body. To maintain compliance with RF exposure requirement, use product that maintain a 20cm distance between the device and human body. For HomeBase: Wi-Fi Operating Frequency Range: 2412~2472MHz ; Wifi Max Output Power: 17.13dBm(EIRP)

For Video Doorbell :

Wi-Fi Operating Frequency Range: 2412~2472MHz ; Wi-Fi Max Output Power: 14.24 dBm



This product is designed and manufactured with high quality materials and components, which can be recycled and reused.



This symbol means the product must not be discarded as household waste, and should be delivered to an appropriate collection facility for recycling. Proper disposal and recycling helps protect natural resources, human health and the environment. For more information on disposal and recycling of this product, contact your local municipality, disposal service, or the shop where you bought this product



Battery warning

- Replacement of a battery with an incorrect type that can defeat a safeguard (for example, in the case of some lithium battery types).
- Disposal of a battery into fire or a hot oven, or mechanically crushing or cutting of a battery, that can result in an explosion.
- Leaving a battery in an extremely high temperature surrounding environment that can result in an explosion or the leakage of flammable liquid or gas.
- A battery subjected to extremely low air pressure that may result in an explosion or the leakage of flammable liquid or gas.

Customer Service

Warranty

12-month limited warranty (The actual warranty period shall be implemented according to the requirements of local laws and regulations)

Email Us

Customer Support: support@aosulife.com

Call Us

United States: 1-866-905-9950 Mon-Fri 9AM-5PM

United Kingdom: +44 20 3885 0830 Mon-Fri 9AM-5PM (GMT)

Germany: +49 32 221094692 Mon-Fri 9:00-17:00



Facebook: [@aosulife](#)



Twitter: [@aosulife](#)



YouTube: [@aosulife](#)

QOSU