

- www.dekco.com
- support@dekco.com
- DEKCOLIFE
- UK: 1-877-277-5797 UK: 44-20-3885-0802

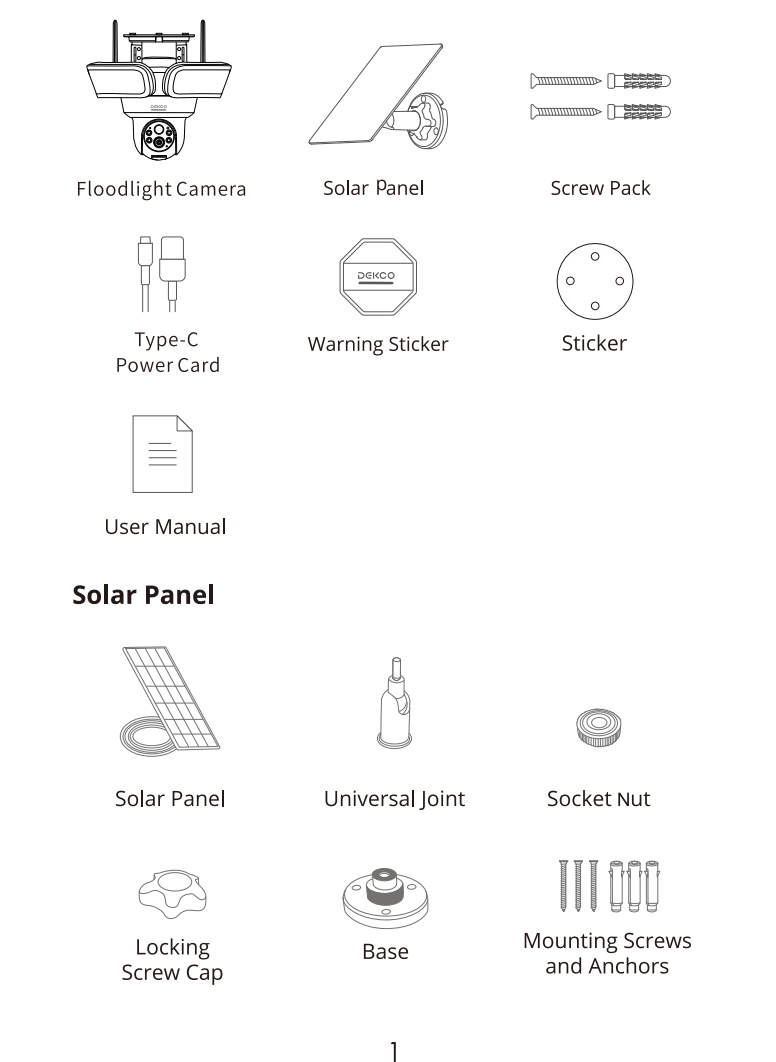
**DekoCare**

Hi Customer  
 Thank you for choosing DEKCO security products. We have always put our customers first and foremost.  
 There are 3 things you should know before using this product:  
 1. Micro SD card  
 If you don't have a Micro-SD card available at home now and don't want to spend extra time choosing one, please contact us directly. TIP: The Micro-SD card gotta be formatted after inserting it up.  
 2. Select 2.4G wifi  
 The product only supports 2.4G wifi, please select 2.4G wifi when setting up the app.  
 3. Select installation location.  
 Please use your mobile phone to test the coverage of the home wifi signal at the planned installation position before installation, so that the product can receive a better signal.  
 Get all the tutorial videos of using product including but not limit to set up the app, installation and format micro sd card, visit: [dekcolife.com/DekoCare](http://dekcolife.com/DekoCare)  
 Join "DekoCare" today as three ways below to get all of your problems solved by one-on-one live chat and phone service tech support.  
 www.dekcolife.com  
 support@dekcolife.com  
 @DEKCOLIFE  
 US: 1-877-277-5797 UK: 44-20-3885-0802

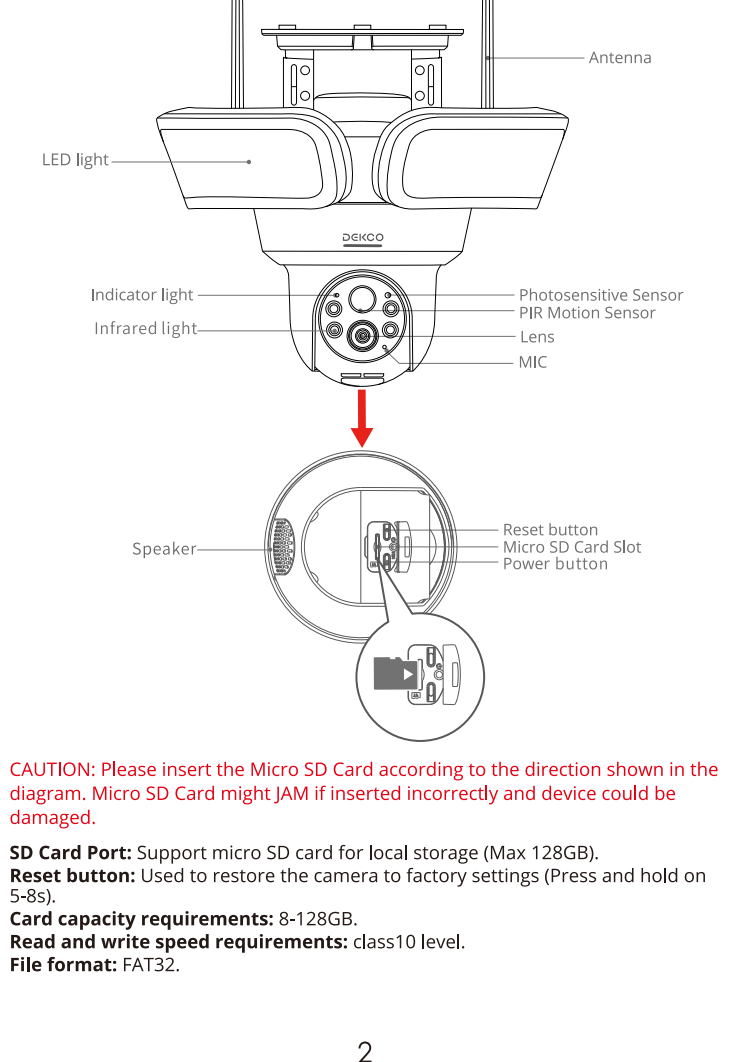
**TABLE OF CONTENTS**

- 01 What's Included
- 02 Product Overview
- 03 App Installation and Register an Account
- 04 How to Add Floodlight Cam to APP
- 05 Mounting the Camera
- 06 PIR Motion Detection Settings
- 07 Product Specification
- 08 FAQ
- 09 Safety Statement

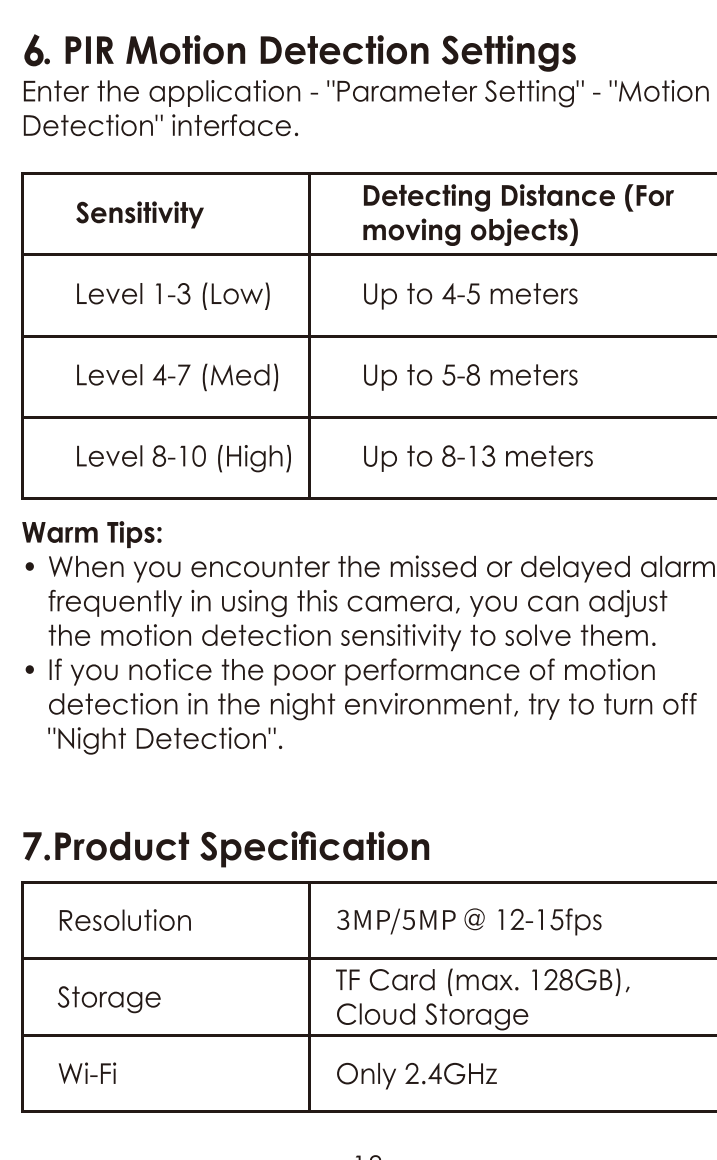
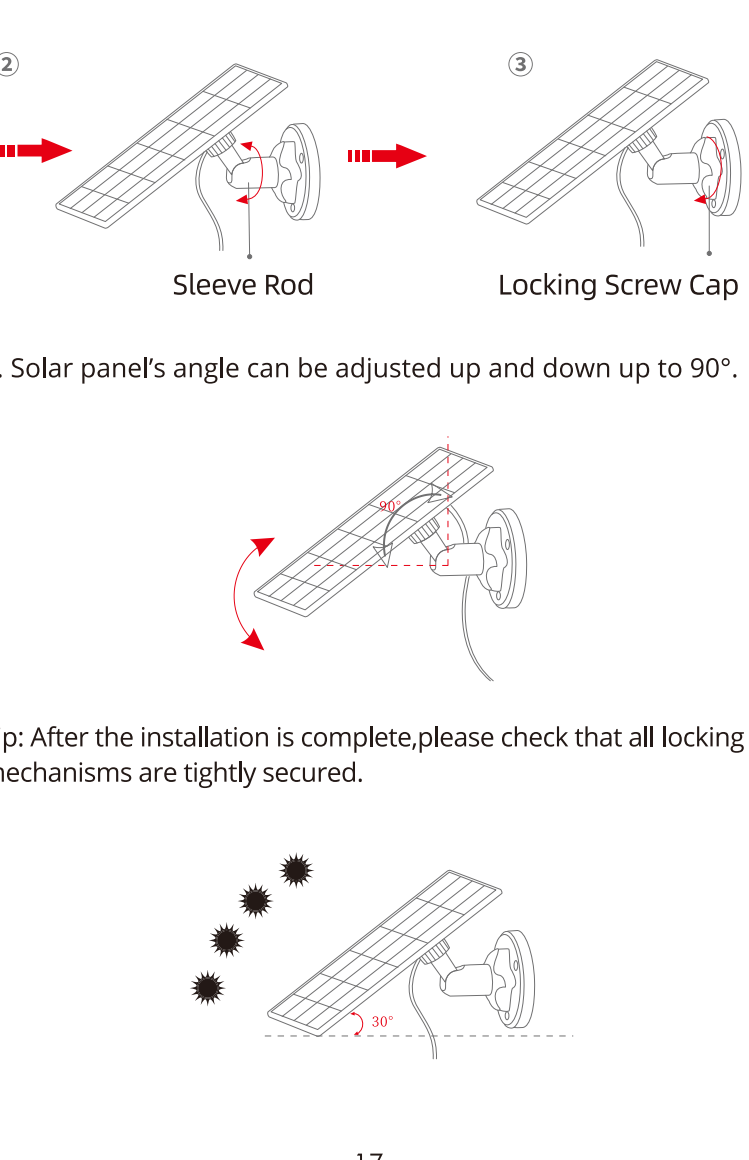
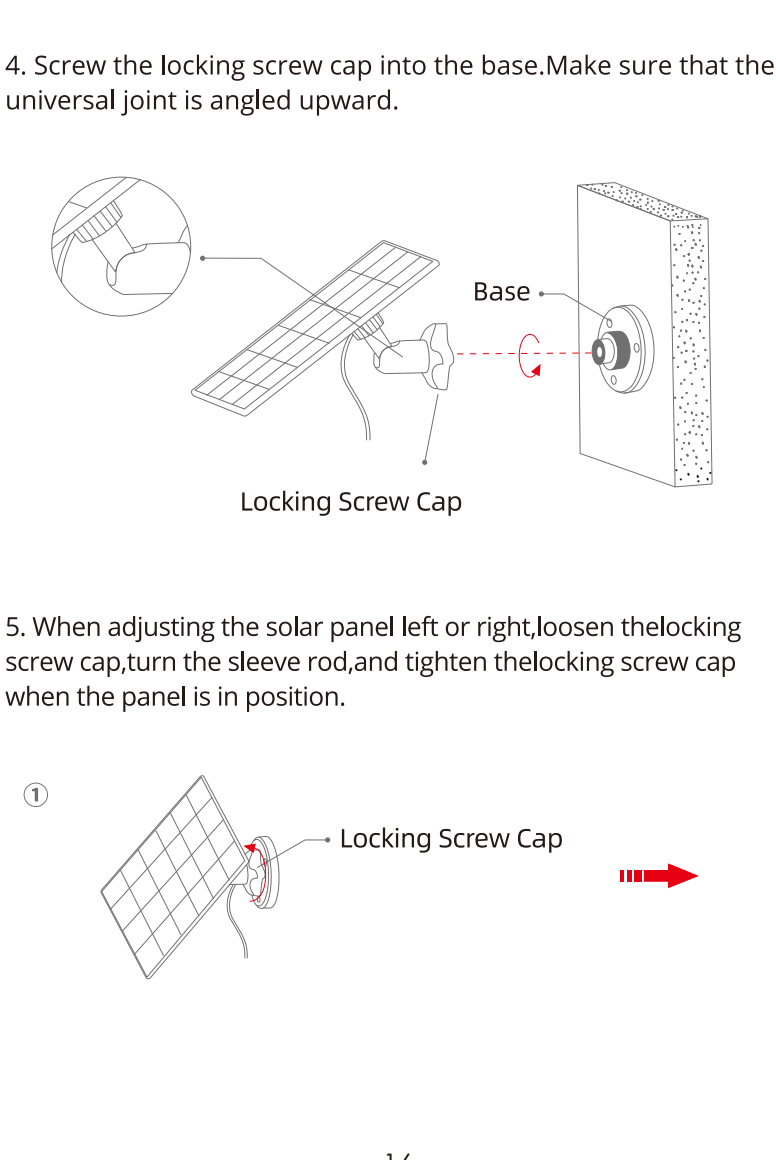
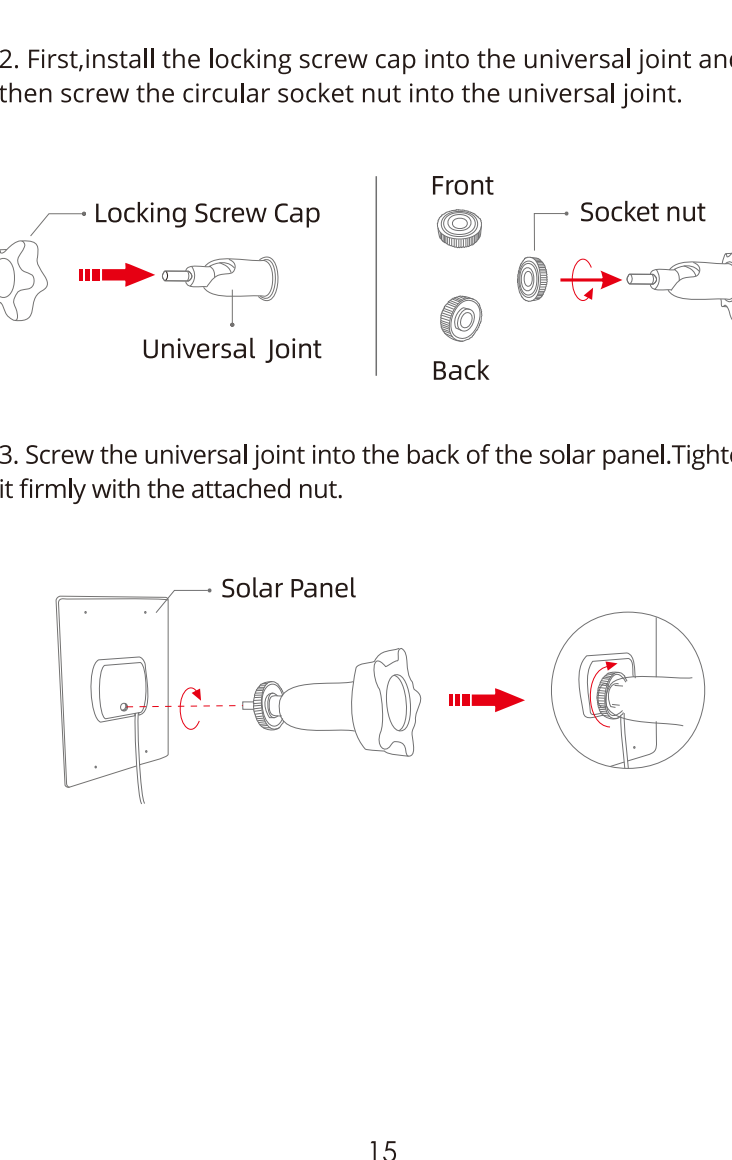
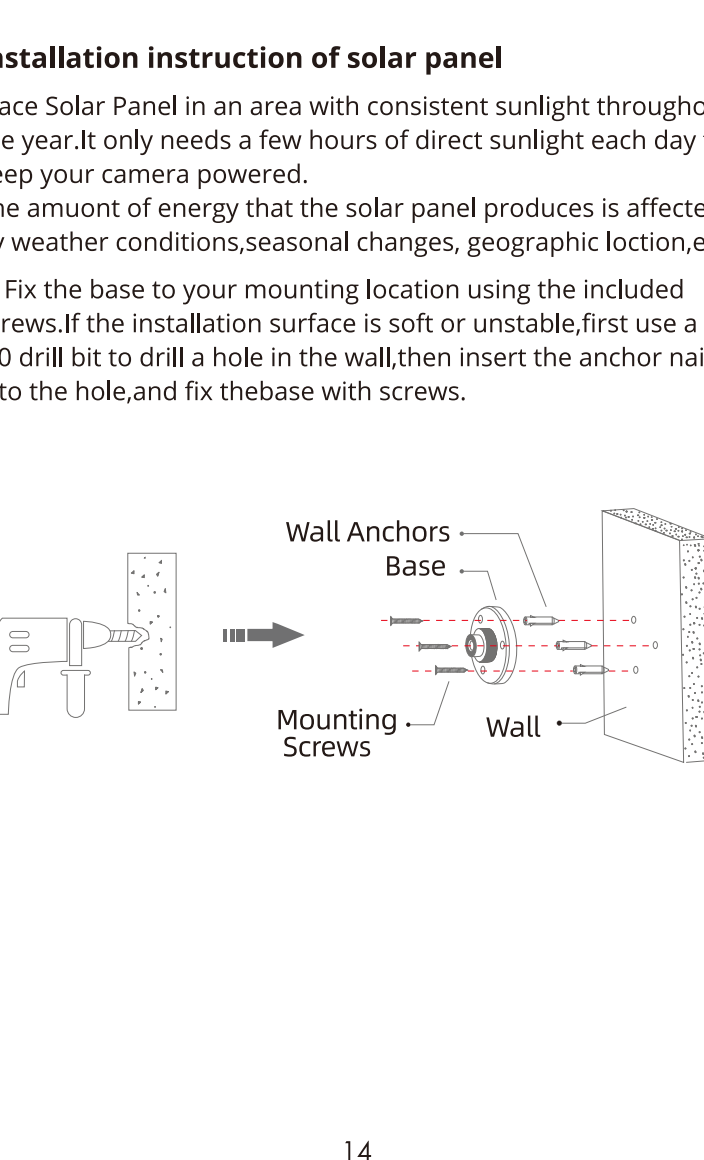
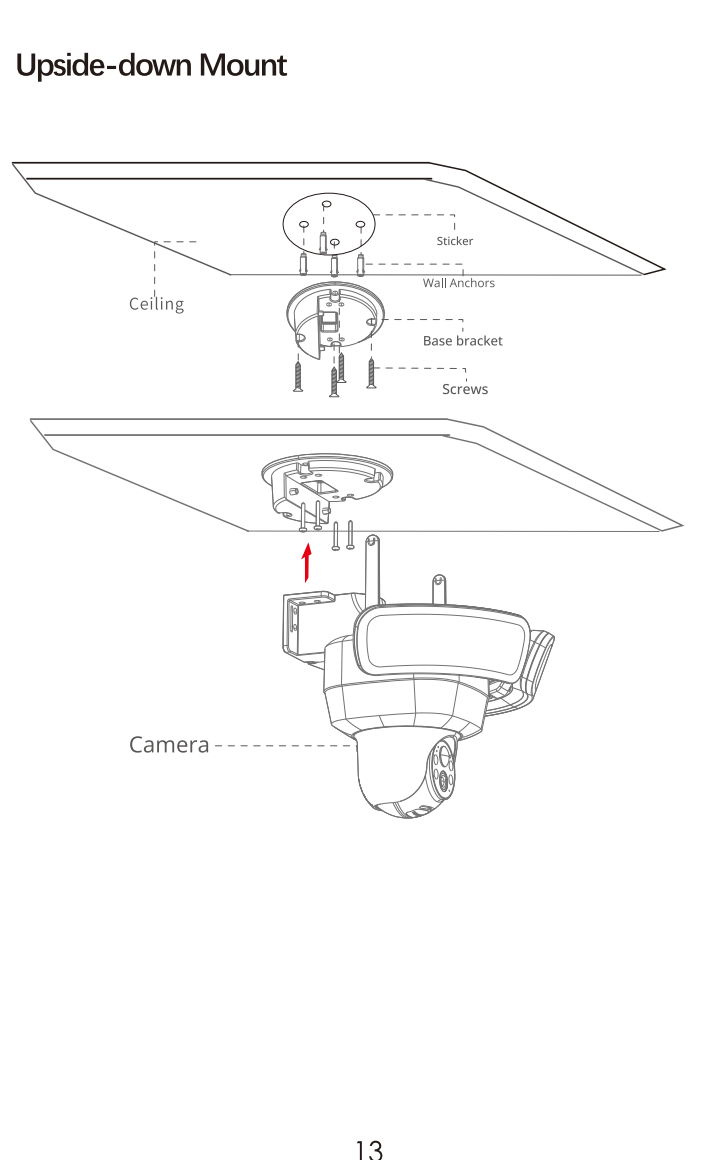
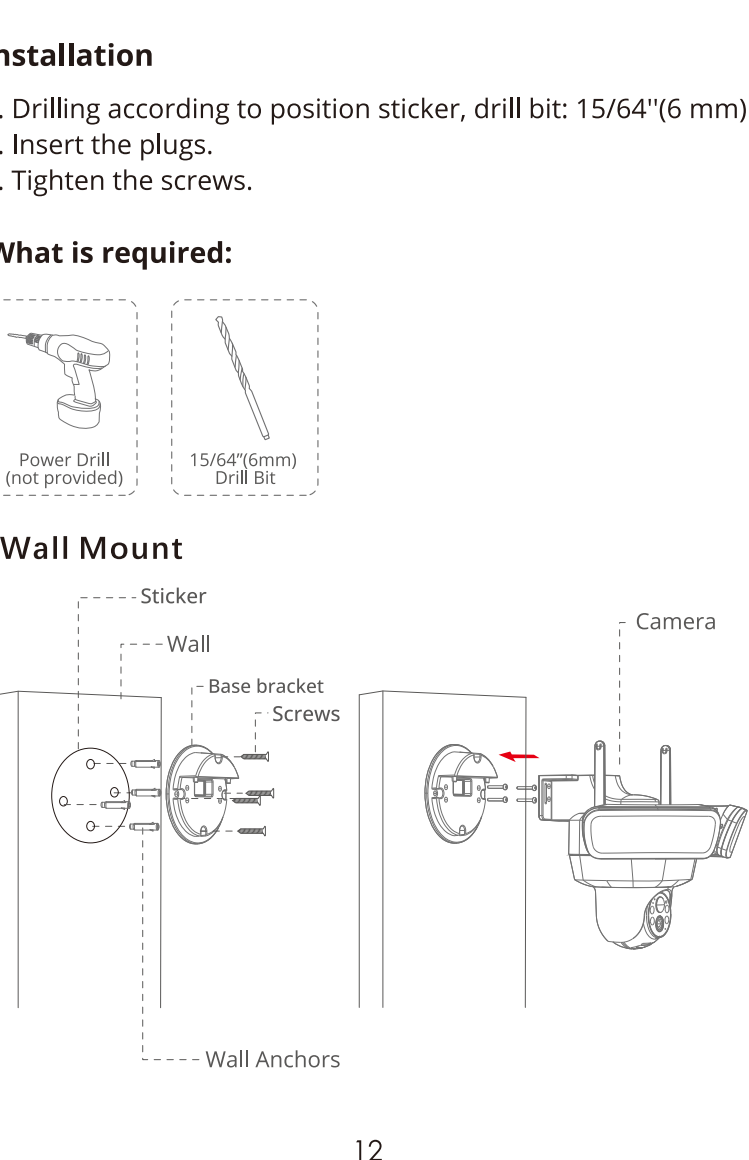
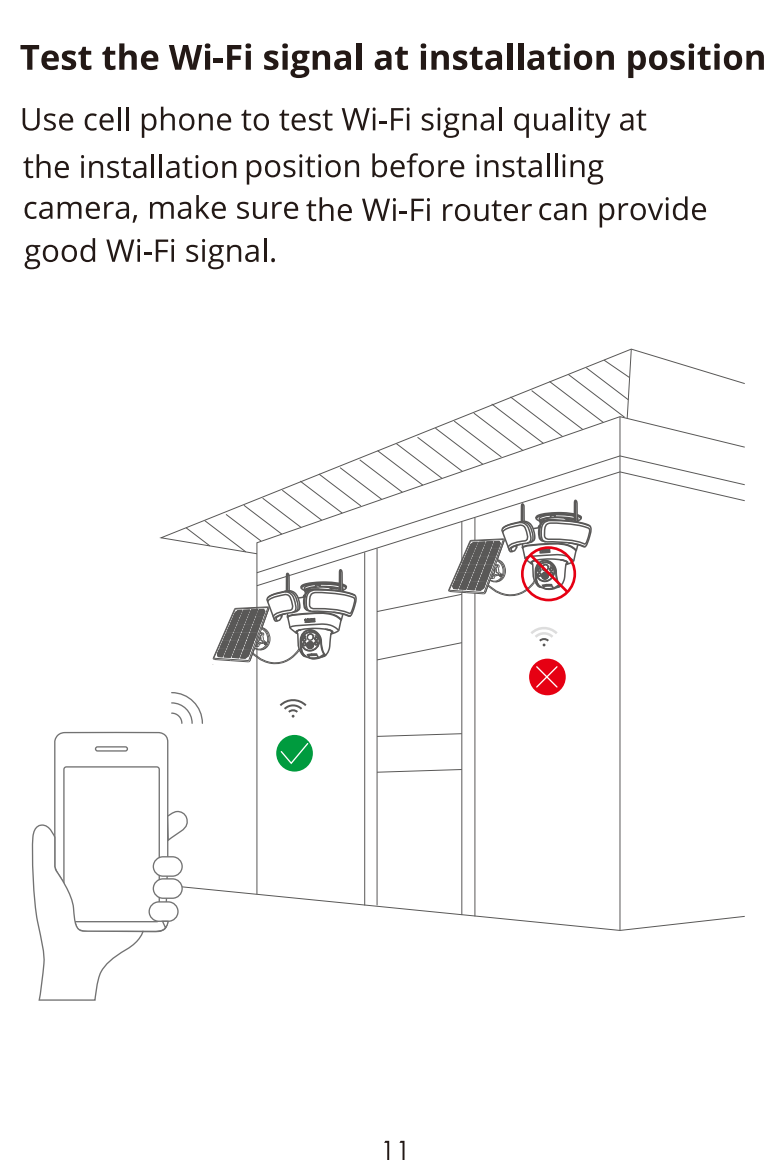
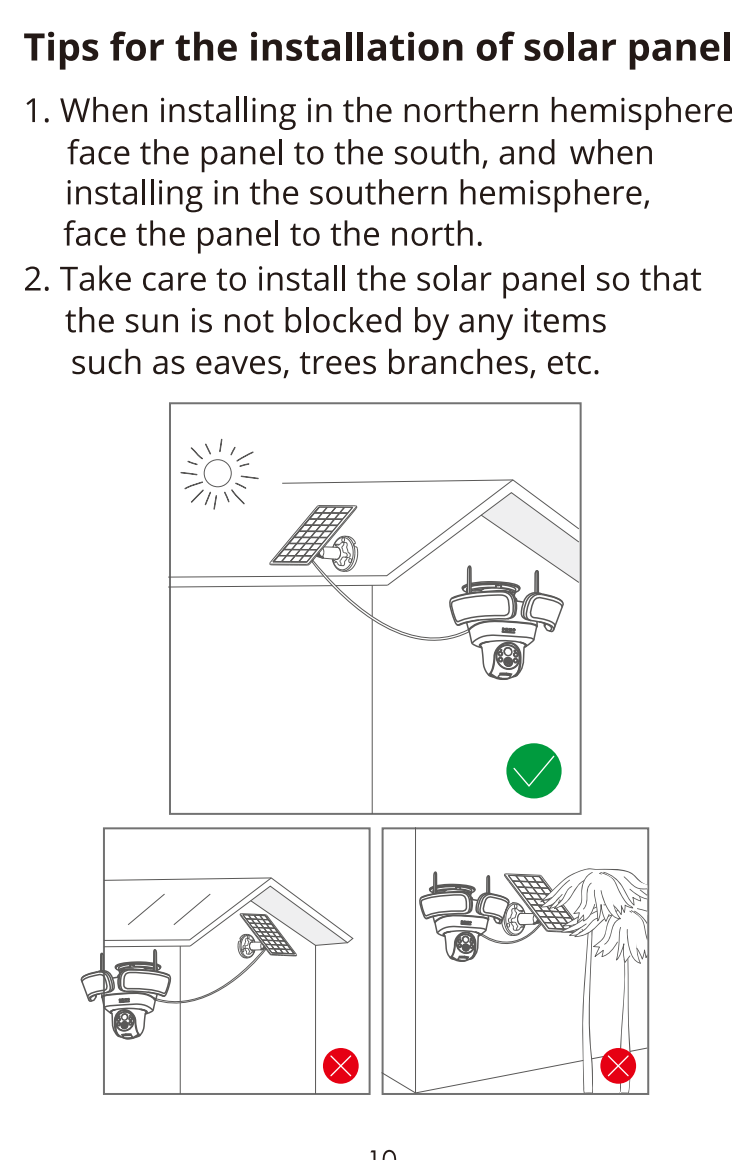
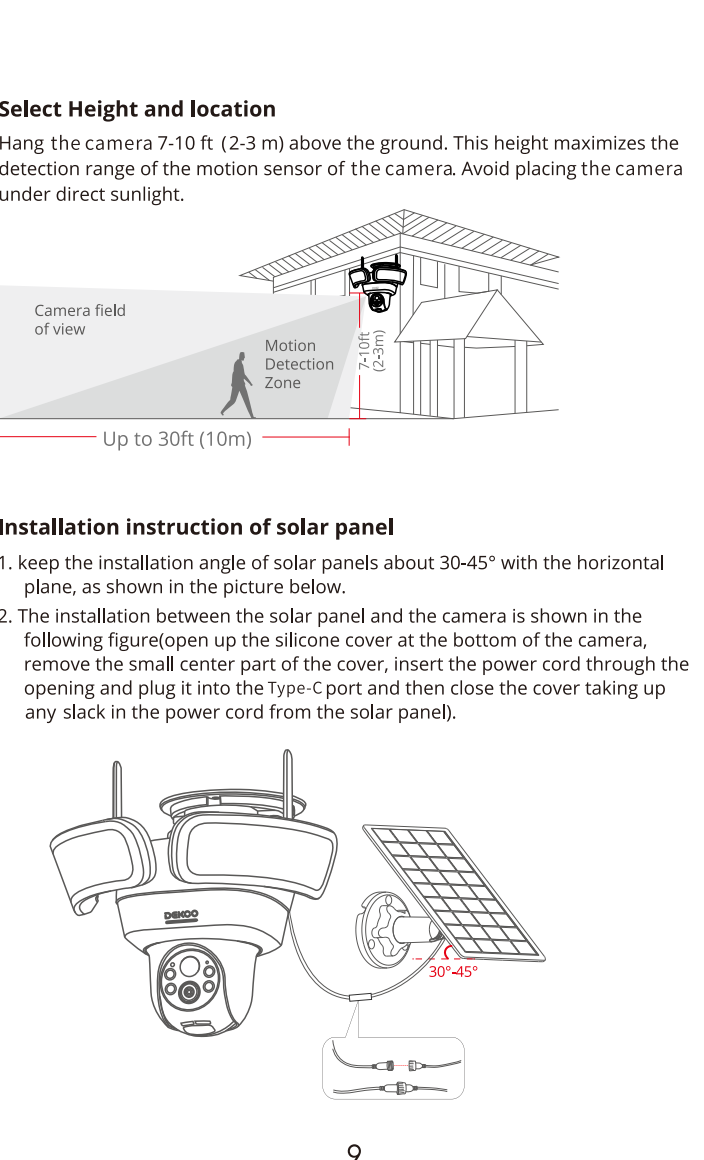
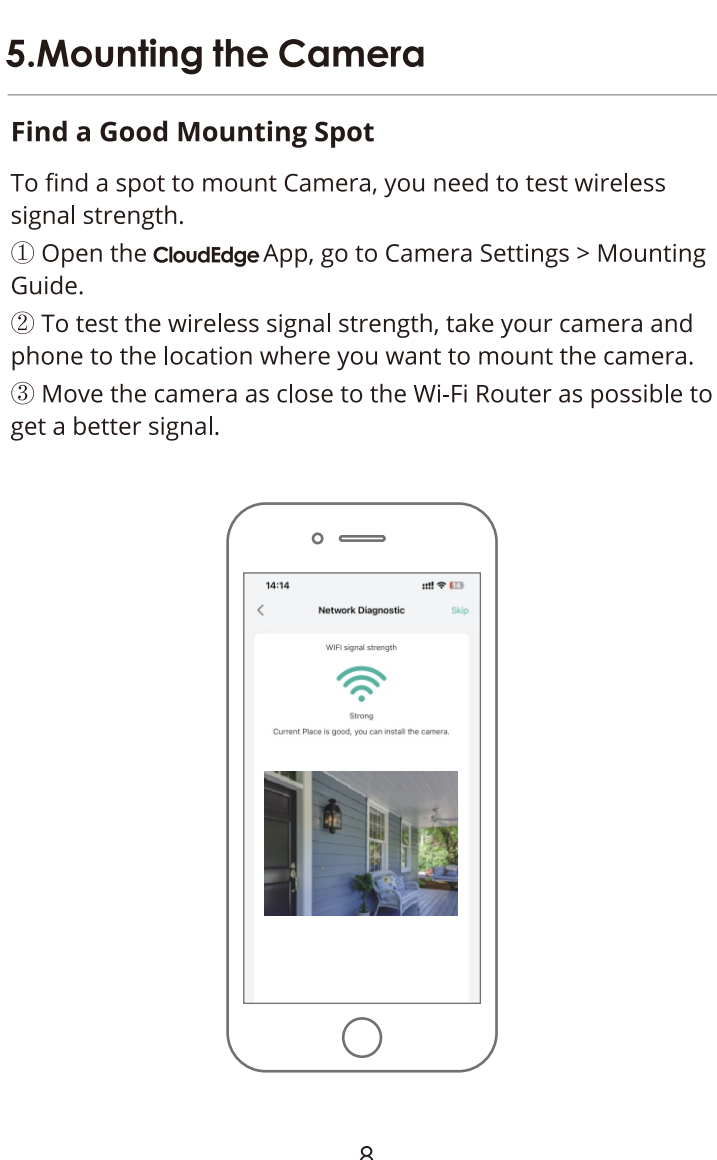
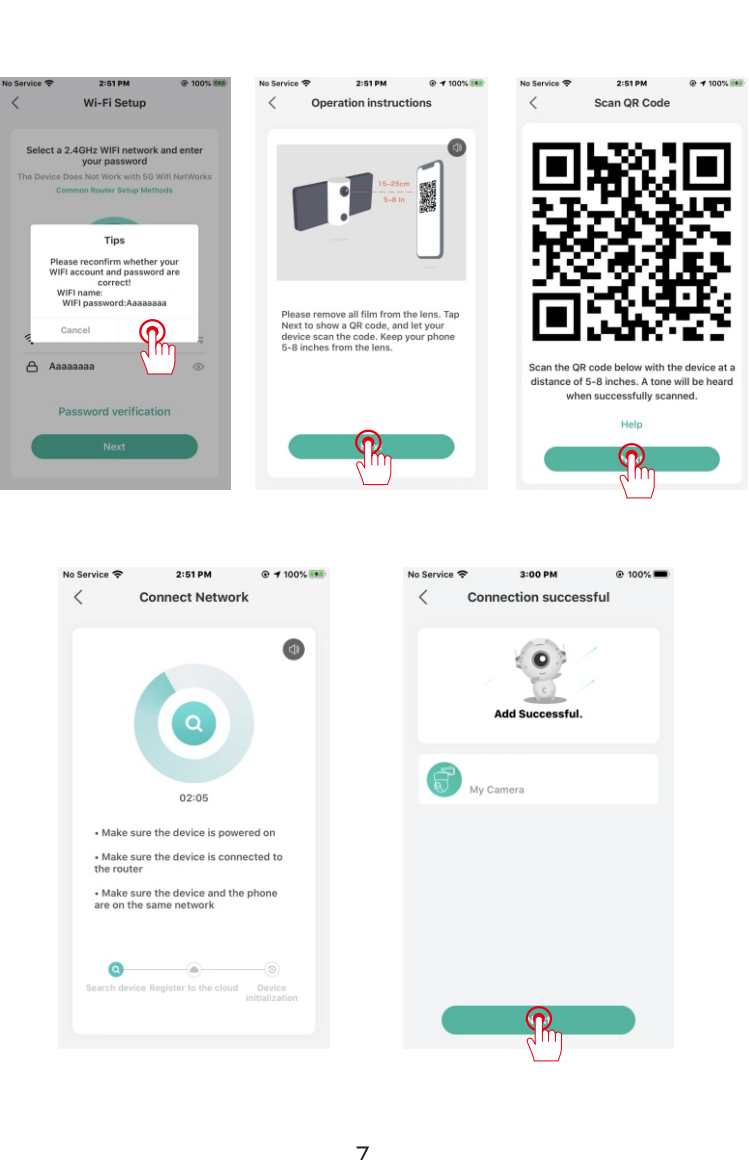
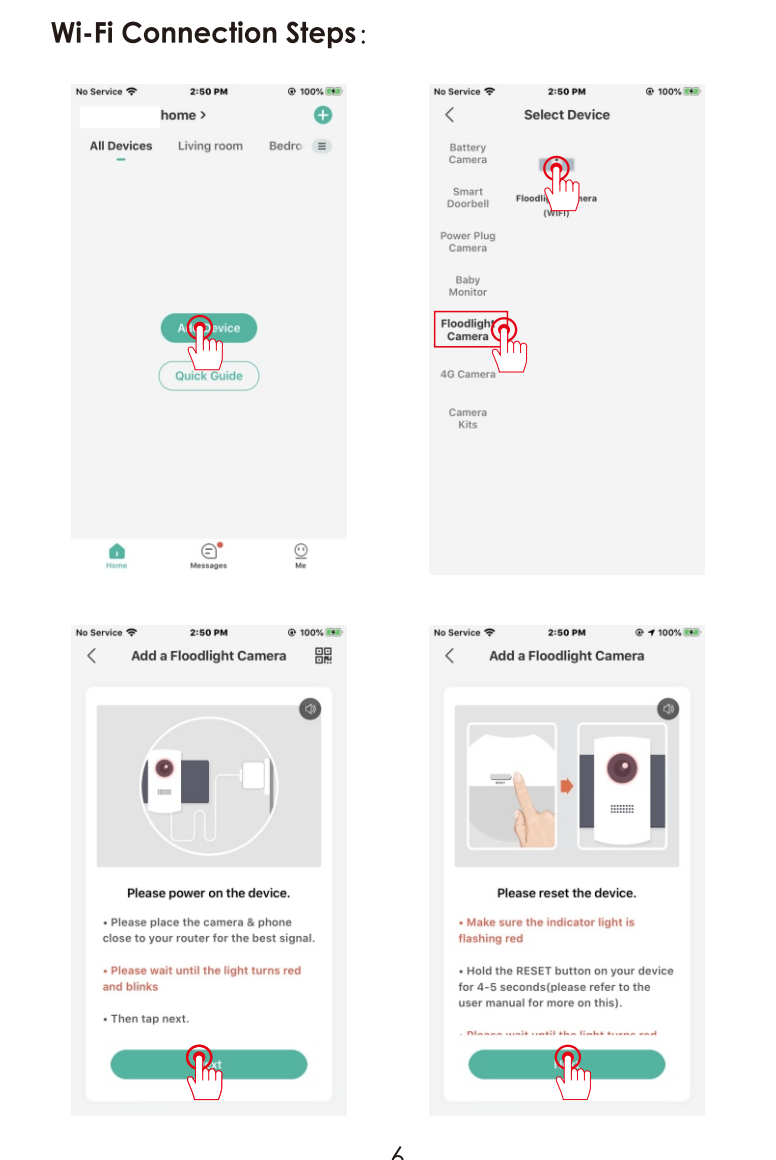
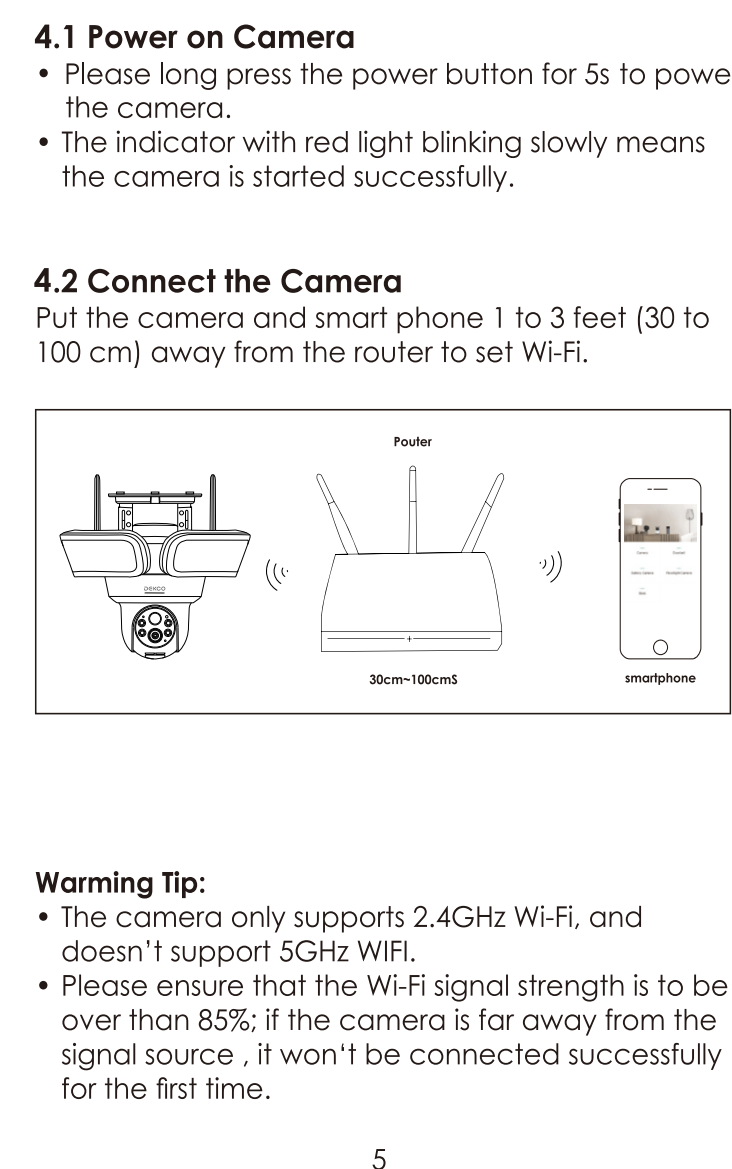
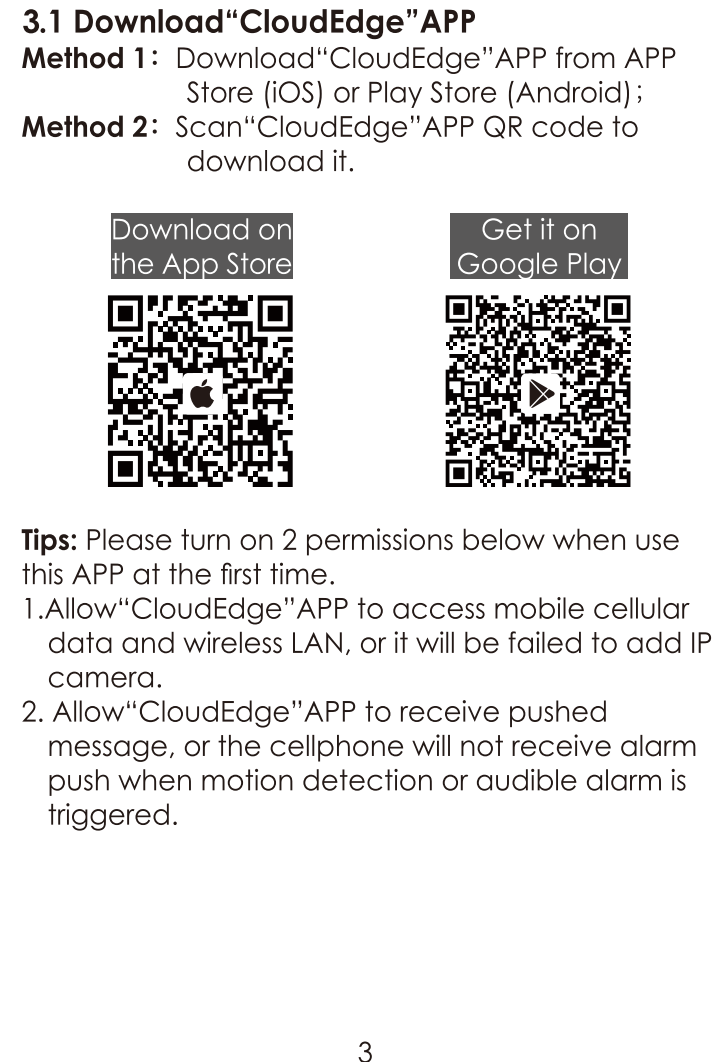
**1.What's Included**



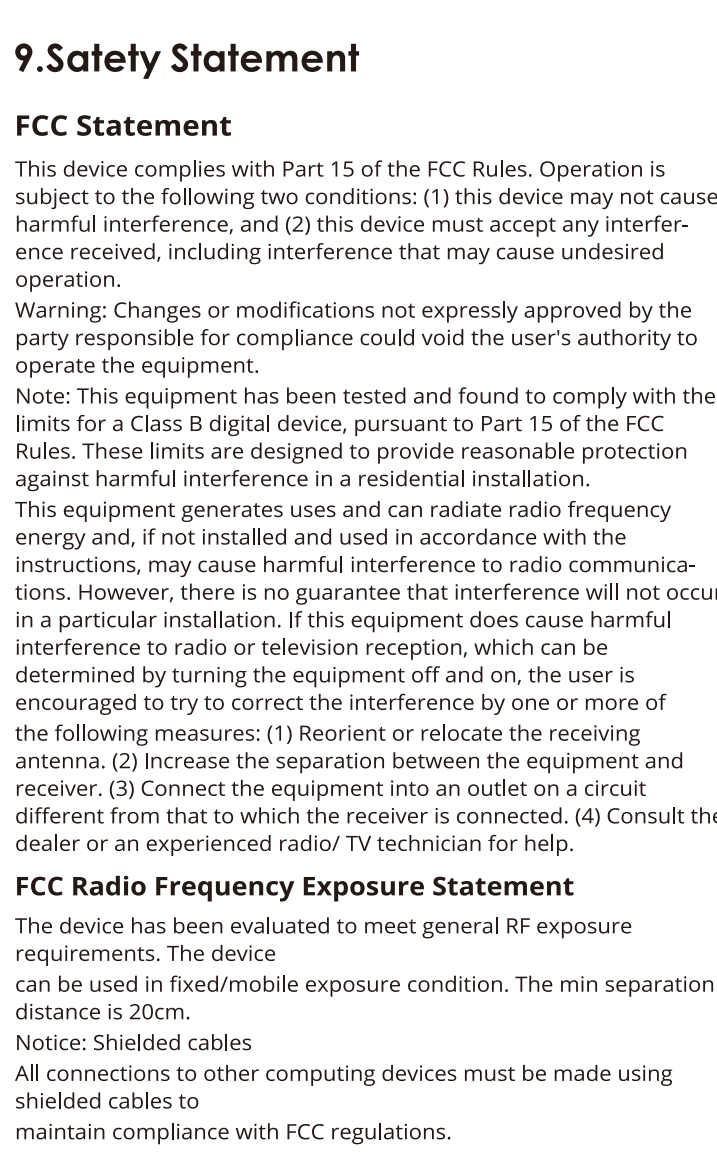
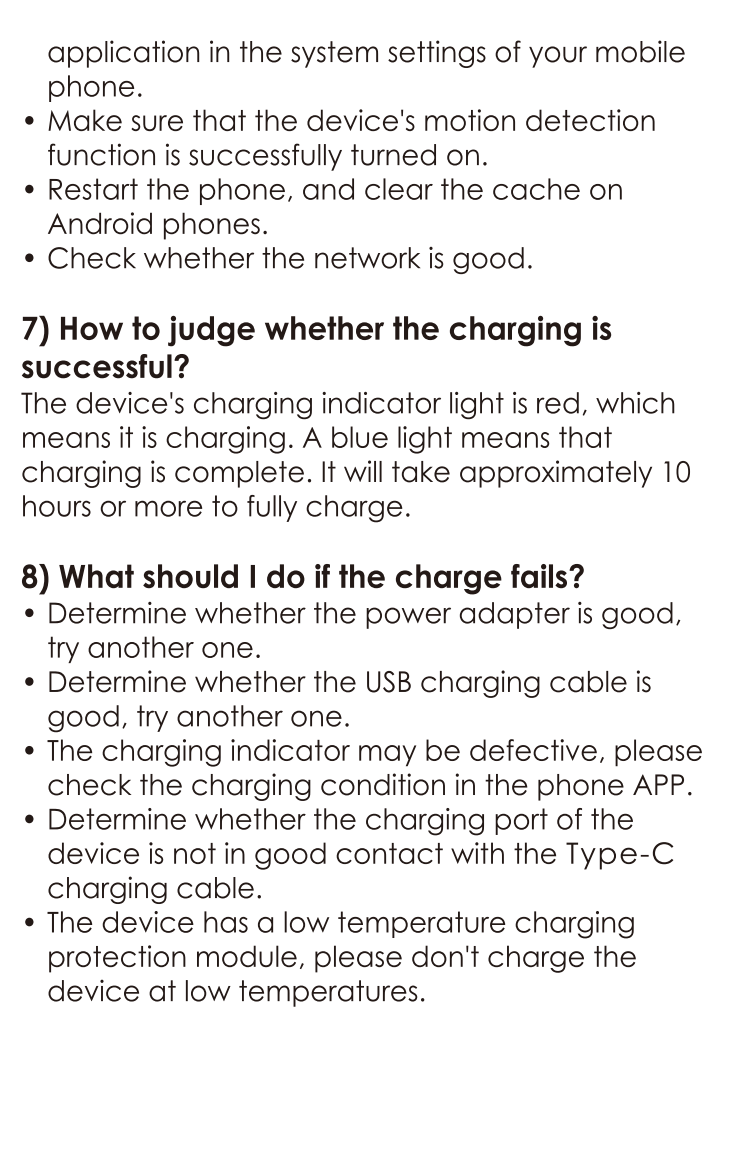
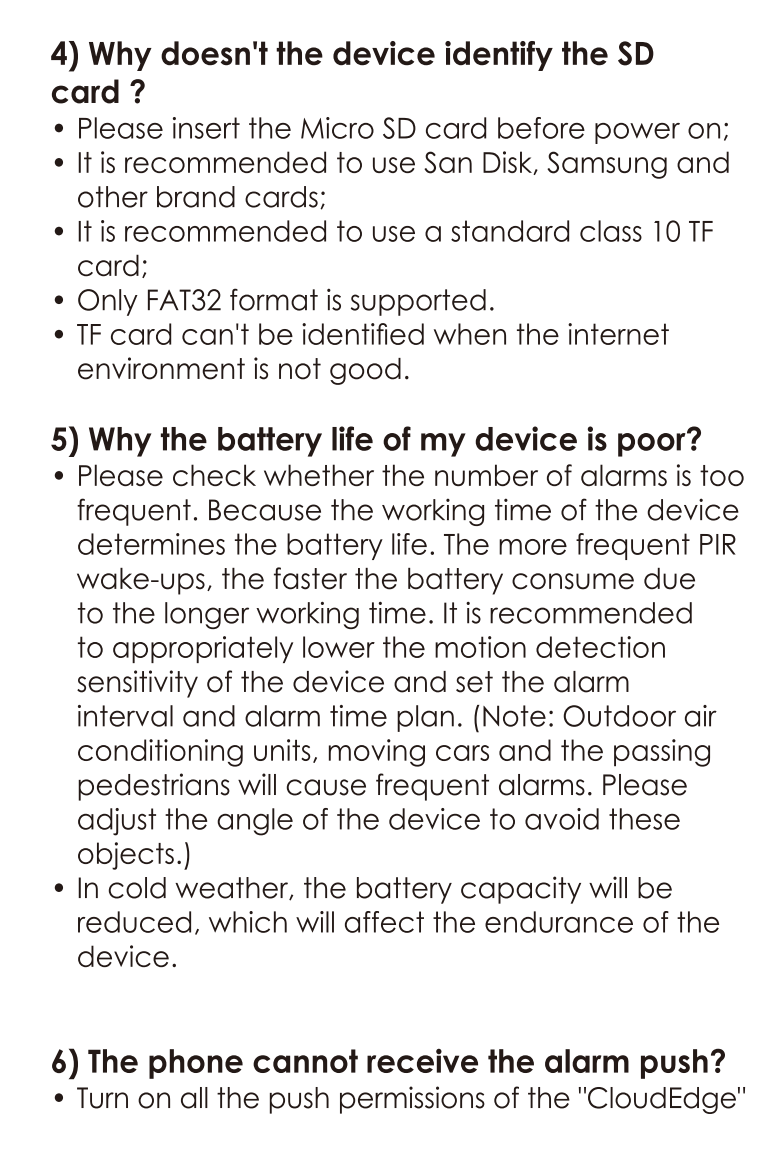
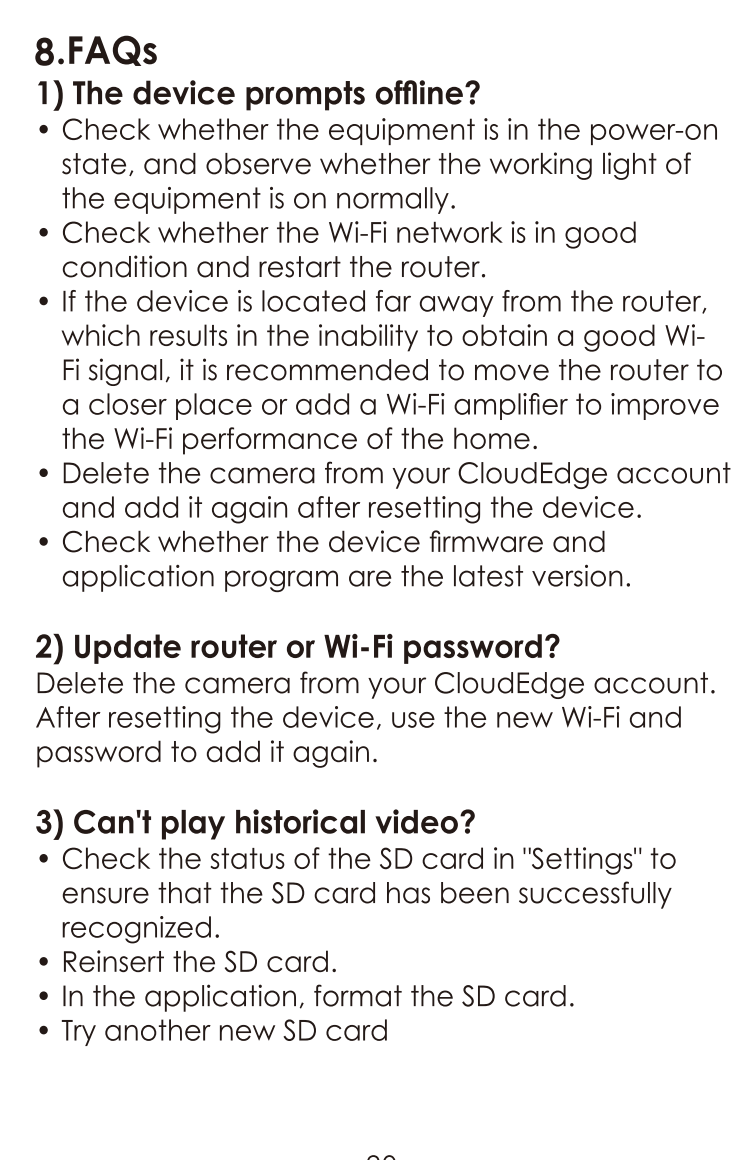
**2.Product Overview**



**3.APP Installation and Register an Account**



|                         |   |
|-------------------------|---|
| Infrared LEDs           | 850nm   |
| Waterproof              | IP65  |
| OS                      | IOS (>8); Android (>4.2)                              |
| Wi-Fi Standards         | IEEE 802.11b/g/n                                      |
| Power                   | 5V 1A   |
| Working Temp & Humidity | -20°C - 50°C (-4°F - 122°F)<br><90% (no condensation) |



**IC Statement**  
 This device contains licence-exempt transmitter(s)/receiver(s) that comply with Innovation, Science and Economic Development Canada's licence-exempt RSS(s).  
 Operation is subject to the following two conditions:  
 (1) This device may not cause interference.  
 (2) This device must accept any interference, including interference that may cause undesired operation of the device.  
 L'émission/réception exempt de licence contenu dans le présent appareil est conforme aux CNR d'Innovation, Sciences et Développement économique Canada applicables aux appareils radio exempts de licence.  
 L'exploitation est autorisée aux deux conditions suivantes:  
 (1) L'appareil ne doit pas produire de brouillage;  
 (2) L'appareil doit accepter tout brouillage radioélectrique subi, même si le brouillage est susceptible d'en compromettre le fonctionnement.  
**IC RF Statement:**  
 This equipment complies with IC RSS - 102 radiation exposure limits set forth for an uncontrolled environment.  
 This equipment should be installed and operated with minimum distance 20cm between the radiator and your body.  
 Cet équipement est conforme aux limites d'exposition aux radiations IC CNR - 102 établies pour un environnement non contrôlé.  
 Cet équipement doit être installé et utilisé avec une distance minimale de 20 cm entre le radiateur et votre corps.

