



FCC Part 15C Test Report

FCC ID: 2A2VW-DC9L

Applicant: Shenzhen Zhiling Technology Co., Ltd

Address: Room 201, Building A, No.1 Qianwan Road, Qianhai Shenzhen-Hong Kong Cooperation Zone, Shenzhen, Guangdong, China

Manufacturer: Shenzhen Zhiling Technology Co., Ltd

Address: Room 201, Building A, No.1 Qianwan Road, Qianhai Shenzhen-Hong Kong Cooperation Zone, Shenzhen, Guangdong, China

EUT: solar ball machine

Trade Mark: N/A

Model Number: DC9L, DC9E, DC9P, DC9S, DC6L, DC6E, DC6P, DC6S, DC5E, DC5P, DC5S, DC8E, DC8P, DC8S, DC4L, DC4E, DC4P, DC2L, DC2E, DC2P

Date of Receipt: Feb. 26, 2022

Test Date: Feb. 26, 2022 – Mar. 04, 2022

Date of Report: Mar. 04, 2022

Prepared By: Shenzhen DL Testing Technology Co., Ltd.

Address: 101-201, Building C, Shuanghuan, No.8, Baoqing Road, Baolong Industrial Zone, Baolong Street, Longgang District, Shenzhen, Guangdong, China

Applicable Standards: FCC PART 15 C 15.247
ANSI C63.10:2013

Test Result: Pass

Report Number: DL-20220304017E

Prepared (Test Engineer): Pxing Huang

Reviewer (Supervisor): Jack Bu

Approved (Manager): Jade Yang



This test report is based on a single evaluation of one sample of above mentioned products. It is not permitted to be duplicated in extracts without written approval of Shenzhen DL Testing Technology Co., Ltd.



Table of Contents	Page
1 . SUMMARY OF TEST RESULTS	4
1.1 MEASUREMENT UNCERTAINTY	4
2 . GENERAL INFORMATION	5
2.1 GENERAL DESCRIPTION OF EUT	5
2.2 DESCRIPTION OF TEST MODES	6
2.3 BLOCK DIGRAM SHOWING THE CONFIGURATION OF SYSTEM TESTED	7
2.4 DESCRIPTION OF SUPPORT UNITS(CONDUCTED MODE)	7
2.5 TABLE OF PARAMETERS OF TEST SOFTWARE SETTING	7
2.6 EQUIPMENTS LIST FOR ALL TEST ITEMS	8
3 . EMC EMISSION TEST	9
3.1 CONDUCTED EMISSION MEASUREMENT	9
3.1.1 POWER LINE CONDUCTED EMISSION LIMITS	9
3.1.2 TEST PROCEDURE	9
3.1.3 DEVIATION FROM TEST STANDARD	9
3.1.4 TEST SETUP	10
3.1.5 EUT OPERATING CONDITIONS	10
3.1.6 TEST RESULTS	10
3.2 RADIATED EMISSION MEASUREMENT	13
3.2.1 RADIATED EMISSION LIMITS	13
3.2.2 TEST PROCEDURE	14
3.2.3 DEVIATION FROM TEST STANDARD	14
3.2.4 TEST SETUP	14
3.2.5 EUT OPERATING CONDITIONS	15
3.2.6 TEST RESULTS (BETWEEN 9KHZ – 30 MHZ)	16
3.2.7 TEST RESULTS (BETWEEN 30MHZ – 1GHZ)	17
3.2.8 TEST RESULTS (1GHZ~25GHZ)	19
3.3 RADIATED BAND EMISSION MEASUREMENT	25
3.3.1 TEST REQUIREMENT:	25
3.3.2 TEST PROCEDURE	25
3.3.3 DEVIATION FROM TEST STANDARD	25
3.3.4 TEST SETUP	26
3.3.5 EUT OPERATING CONDITIONS	26
4 . PEAK OUTPUT POWER	33
4.1 APPLIED PROCEDURES / LIMIT	33
4.1.1 TEST PROCEDURE	33
4.1.2 DEVIATION FROM STANDARD	33
4.1.3 TEST SETUP	33
4.1.4 EUT OPERATION CONDITIONS	33



Table of Contents	Page
4.1.5 TEST RESULTS	34
5 . POWER SPECTRAL DENSITY TEST	37
5.1 APPLIED PROCEDURES / LIMIT	37
5.1.1 TEST PROCEDURE	37
5.1.2 DEVIATION FROM STANDARD	37
5.1.3 TEST SETUP	37
5.1.4 EUT OPERATION CONDITIONS	37
5.1.5 TEST RESULTS	38
6 . 6DB BANDWIDTH TEST	41
6.1 APPLIED PROCEDURES / LIMIT	41
6.1.1 TEST PROCEDURE	41
6.1.2 DEVIATION FROM STANDARD	41
6.1.3 TEST SETUP	41
6.1.4 EUT OPERATION CONDITIONS	41
6.1.5 TEST RESULTS	42
7 . ANTENNA REQUIREMENT	45
7.1 STANDARD REQUIREMENT	45
7.2 EUT ANTENNA	45
8 . TEST SEUUP PHOTO	46
9 . EUT PHOTO	48



1. SUMMARY OF TEST RESULTS

Test procedures according to the technical standards:

FCC Part15 (15.247) , Subpart C			
Standard Section	Test Item	Judgment	Remark
15.207	Conducted Emission	PASS	
15.247(c)	Radiated Spurious Emission	PASS	
15.205	Band Edge Emission	PASS	
15.247(b)(1)	Peak Output Power	PASS	
15.247(a)(2)	6dB Bandwidth	PASS	
15.247(d)	Power Spectral Density	PASS	
15.203	Antenna Requirement	PASS	

NOTE:

(1) "N/A" denotes test is not applicable in this Test Report

1.1 MEASUREMENT UNCERTAINTY

The reported uncertainty of measurement $y \pm U$, where expanded uncertainty U is based on a standard uncertainty multiplied by a coverage factor of $k=2$ providing a level of confidence of approximately 95 %.

No.	Item	Uncertainty
1	Conducted Emission Test	$\pm 2.56\text{dB}$
2	RF power,conducted	$\pm 0.42\text{dB}$
3	Spurious emissions,conducted	$\pm 2.76\text{dB}$
4	All emissions,radiated(<1G)	$\pm 3.65\text{dB}$
5	All emissions,radiated(>1G)	$\pm 4.89\text{dB}$
6	Temperature	$\pm 0.5\text{C}$
7	Humidity	$\pm 2\%$



2. GENERAL INFORMATION

2.1 GENERAL DESCRIPTION OF EUT

Product Name:	solar ball machine
Trademark	N/A
Model No.:	DC9L, DC9E, DC9P, DC9S, DC6L, DC6E, DC6P, DC6S, DC5E, DC5P, DC5S, DC8E, DC8P, DC8S, DC4L, DC4E, DC4P, DC2L, DC2E, DC2P
Model Difference	All samples are the same except the model name, so we prepare "DC9L " for test only.
Operation Frequency:	2412~2462 MHz for 802.11b/g/nHT20 2422~2452 MHz for 802.11nHT40
Channel numbers:	11 Channels for 802.11b/g/n(HT20) 7 channels for 802.11nHT40
Channel separation:	5MHz
Modulation technology:	802.11b: DSSS (CCK, DQPSK, DBPSK) 802.11g/n(20): DSSS (CCK, DQPSK, DBPSK)+OFDM (QPSK, BPSK, 16-QAM, 64-QAM)
Rate of Transmitter	802.11b: 11/5.5/2/1Mbps 802.11g: 54/48/36/24/18/12/9/6Mbps 802.11n: up to 150Mbps
Antenna Type:	External Antenna
Antenna gain:	3dBi
Power supply:	DC 3.7V from battery DC 5V from USB

Note:

- 1.For a more detailed features description, please refer to the manufacturer's specifications or the User's Manual.
- 2.The EUT's all information provided by client.



2. Channel List(802.11b/g/nHT20)

Channel	Frequency (GHz)	Channel	Frequency (GHz)
01	2.412	07	2.442
02	2.417	08	2.447
03	2.422	09	2.452
04	2.427	10	2.457
05	2.432	11	2.462
06	2.437		

Channel List(802.11nHT40)

Channel	Frequency (GHz)	Channel	Frequency (GHz)
03	2.422	07	2.442
04	2.427	08	2.447
05	2.432	09	2.452
06	2.437		

2.2 DESCRIPTION OF TEST MODES

To investigate the maximum EMI emission characteristics generates from EUT, the test system was pre-scanning tested base on the consideration of following EUT operation mode or test configuration mode which possible have effect on EMI emission level. Each of these EUT operation mode(s) or test configuration mode(s) mentioned above was evaluated respectively.

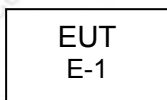
Pretest Mode	Description
Mode 1	802.11b CH1/ CH6/ CH11
Mode 2	802.11g CH1/ CH6/ CH11
Mode 3	802.11nHT20 CH1/ CH6/ CH11
Mode 4	802.11nHT40 CH3/ CH6/ CH09
Mode 5	Link Mode
For Conducted Emission	
Final Test Mode	Description
Mode 5	Link Mode
For Radiated Emission	
Final Test Mode	Description
Mode 1	802.11b CH1/ CH6/ CH11
Mode 2	802.11g CH1/ CH6/ CH11
Mode 3	802.11nHT20 CH1/ CH6/ CH11
Mode 4	802.11nHT40 CH3/ CH6/ CH09
Mode 5	Link Mode

Note: 1. The measurements are performed at the highest, middle, lowest available channels.
2. During the test, the duty cycle >98%, the test voltage was tuned from 85% to 115% of the nominal rated supply voltage, and found that the worst case was under the nominal rated supply condition. So the report just shows that condition's data.

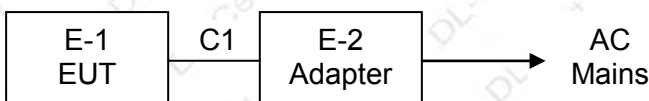


2.3 BLOCK DIGRAM SHOWING THE CONFIGURATION OF SYSTEM TESTED

Radiated Spurious Emission Test



Conducted Spurious Emission Test



2.4 DESCRIPTION OF SUPPORT UNITS(CONDUCTED MODE)

The EUT has been tested as an independent unit together with other necessary accessories or support units. The following support units or accessories were used to form a representative test configuration during the tests.

Item	Equipment	Model/Type No.	Series No.	Note
E-1	solar ball machine	DC9L	N/A	EUT
E-2	Adapter	HW-0502000E	N/A	

Item	Shielded Type	Ferrite Core	Length	Note
C1	No	No	0.5m	Mini USB Line

Note:

- (1) For detachable type I/O cable should be specified the length in cm in 『Length』 column.

2.5 TABLE OF PARAMETERS OF TEST SOFTWARE SETTING

During testing, channel & power controlling software provided by the customer was used to control the operating channel as well as the output power level. The RF output power selection is for the setting of RF output power expected by the customer and is going to be fixed on the end product.

Max output power Setting				
Test software Version	Test program: AXDN-0002.0			
Mode	802.11b	802.11g	802.11n HT20	802.11n HT40
Data Rate	1Mbps	1Mbps	MSC0	MSC0
Power Setting of Softwave	60	60	60	66

**2.6 EQUIPMENTS LIST FOR ALL TEST ITEMS**

Radiation test, Band-edge test and 6db bandwidth test equipment

Item	Equipment	Manufacturer	Type No.	Serial No.	Last calibration	Calibrated until
1	Spectrum Analyzer (9kHz-26.5GHz)	Agilent	E4408B	MY50140780	Nov. 06, 2021	Nov. 05, 2022
2	Test Receiver (9kHz-7GHz)	R&S	ESRP7	101393	Nov. 06, 2021	Nov. 05, 2022
3	Bilog Antenna (30MHz-1GHz)	R&S	VULB9162	00306	Nov. 06, 2021	Nov. 05, 2022
4	Horn Antenna (1GHz-18GHz)	Schwarzbeck	BBHA9120D	02139	Nov. 06, 2021	Nov. 05, 2022
5	Horn Antenna (18GHz-40GHz)	A.H. Systems	SAS-574	588	Nov. 06, 2021	Nov. 05, 2022
6	Amplifier (9KHz-6GHz)	Schwarzbeck	BBV9743B	00153	Nov. 06, 2021	Nov. 05, 2022
7	Amplifier (1GHz-18GHz)	EMEC	EM01G8GA	00270	Nov. 06, 2021	Nov. 05, 2022
8	Amplifier (18GHz-40GHz)	Quanjuda	DLE-161	97	Nov. 06, 2021	Nov. 05, 2022
9	Loop Antenna (9KHz-30MHz)	Schwarzbeck	FMZB1519B	00014	Nov. 06, 2021	Nov. 05, 2022
10	RF cables1 (9kHz-1GHz)	ChengYu	966	004	Nov. 06, 2021	Nov. 05, 2022
11	RF cables2 (1GHz-40GHz)	ChengYu	966	003	Nov. 06, 2021	Nov. 05, 2022
12	Antenna connector	Florida RF Labs	N/A	RF 01#	Nov. 06, 2021	Nov. 05, 2022
13	Power probe	KEYSIGHT	U2021XA	MY55210018	Nov. 06, 2021	Nov. 05, 2022
14	Signal Analyzer 9kHz-26.5GHz	Agilent	N9020A	MY55370280	Nov. 06, 2021	Nov. 05, 2022
15	Test Receiver 20kHz-40GHz	R&S	ESU 40	100376	Nov. 06, 2021	Nov. 05, 2022
16	D.C. Power Supply	LongWei	PS-305D	010964729	Nov. 06, 2021	Nov. 05, 2022

Conduction Test equipment

Item	Equipment	Manufacturer	Type No.	Serial No.	Last calibration	Calibrated until
1	843 Shielded Room	ChengYu	843 Room	843	Nov. 25, 2019	Nov. 24, 2022
2	EMI Receiver	R&S	ESR	101421	Nov. 06, 2021	Nov. 05, 2022
3	LISN	R&S	ENV216	102417	Nov. 06, 2021	Nov. 05, 2022
4	843 Cable 1#	ChengYu	CE Cable	001	Nov. 06, 2021	Nov. 05, 2022

Other

Item	Name	Manufacturer	Model	Software version
1	EMC Conduction Test System	FALA	EZ_EMCC	EMC-CON 3A1.1
2	EMC radiation test system	FALA	EZ_EMCC	FA-03A2
3	RF test system	MAIWEI	MTS8310	2.0.0.0
4	RF communication test system	MAIWEI	MTS8200	2.0.0.0



3. EMC EMISSION TEST

3.1 CONDUCTED EMISSION MEASUREMENT

3.1.1 POWER LINE CONDUCTED EMISSION Limits (Frequency Range 150KHz-30MHz)

FREQUENCY (MHz)	Limit (dBuV)		Standard
	Quasi-peak	Average	
0.15 -0.5	66 - 56 *	56 - 46 *	FCC
0.50 -5.0	5.00	6.00	FCC
5.0 -30.0	60.00	50.00	FCC

Note:

- (1) The tighter limit applies at the band edges.
- (2) The limit of " * " marked band means the limitation decreases linearly with the logarithm of the frequency in the range.

The following table is the setting of the receiver

Receiver Parameters	Setting
Attenuation	10 dB
Start Frequency	0.15 MHz
Stop Frequency	30 MHz
IF Bandwidth	9 kHz

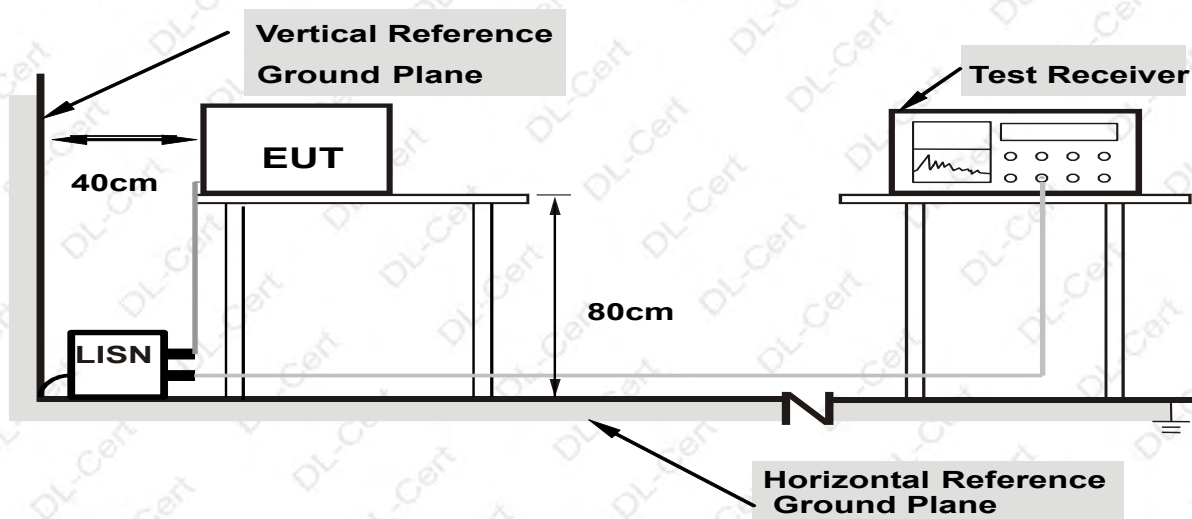
3.1.2 TEST PROCEDURE

- a. The EUT was placed 0.8 meters from the horizontal ground plane with EUT being connected to the power mains through a line impedance stabilization network (LISN). All other support equipments powered from additional LISN(s). The LISN provide 50 Ohm/ 50uH of coupling impedance for the measuring instrument.
- b. Interconnecting cables that hang closer than 40 cm to the ground plane shall be folded back and forth in the center forming a bundle 30 to 40 cm long.
- c. I/O cables that are not connected to a peripheral shall be bundled in the center. The end of the cable may be terminated, if required, using the correct terminating impedance. The overall length shall not exceed 1 m.
- d. LISN at least 80 cm from nearest part of EUT chassis.
- e. For the actual test configuration, please refer to the related Item –EUT Test Photos.

3.1.3 DEVIATION FROM TEST STANDARD

No deviation

3.1.4 TEST SETUP



Note: 1. Support units were connected to second LISN.

2. Both of LISNs (AMN) are 80 cm from EUT and at least 80 cm from other units and other metal planes

3.1.5 EUT OPERATING CONDITIONS

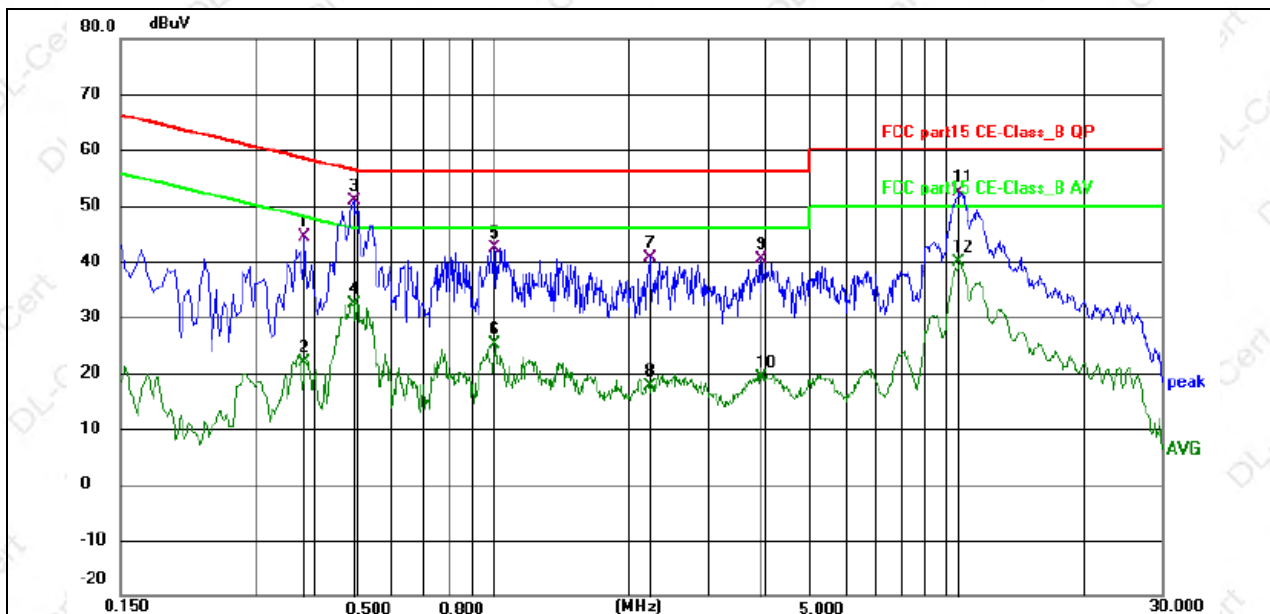
The EUT was configured for testing in a typical fashion (as a customer would normally use it). The EUT has been programmed to continuously transmit during test. This operating condition was tested and used to collect the included data.

We pretest AC 120V and AC 230V, the worst voltage was AC 120V and the data recording in the report.

3.1.6 TEST RESULTS



Temperature:	25 °C	Relative Humidity:	54%
Pressure:	1010hPa	Phase :	L
Test Voltage :	AC 120V/60Hz	Test Mode:	Mode 5



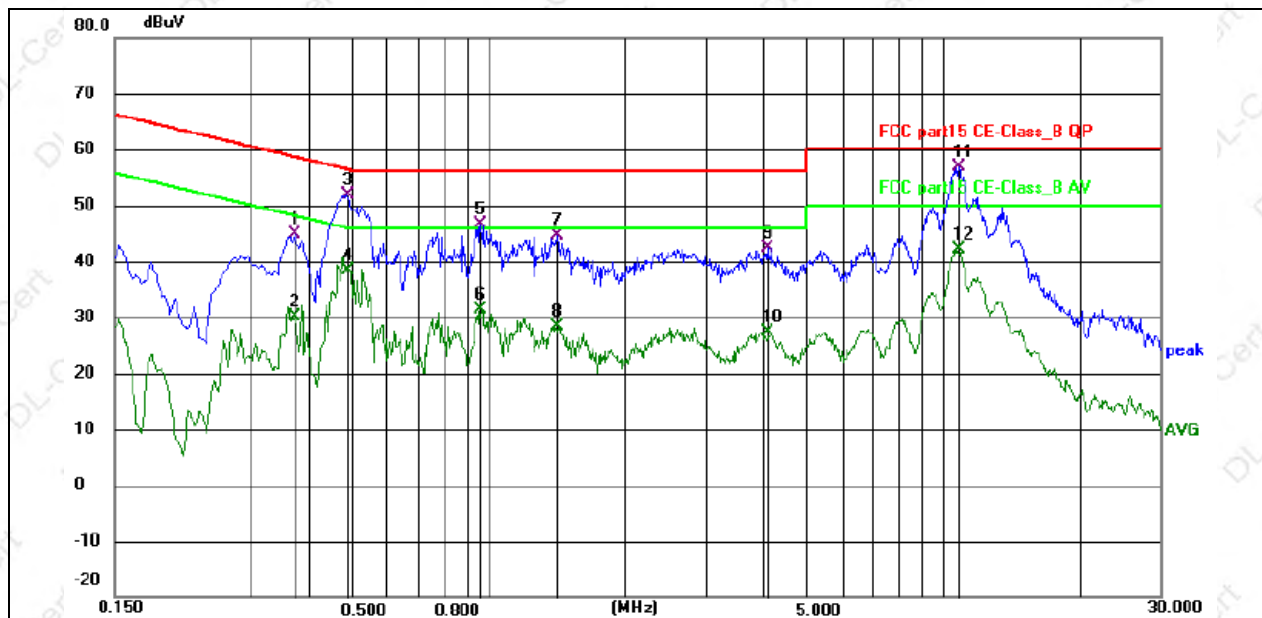
Remark:

Margin = Limit – Level, Correct Factor = Cable lose + LISN insertion loss, Level= Reading + Correct factor

No.	Frequency (MHz)	Reading (dBuV)	Factor (dB)	Level (dBuV)	Limit (dBuV)	Margin (dB)	Detector	P/F	Remark
1	0.3840	35.16	9.11	44.27	58.19	13.92	QP	P	
2	0.3840	12.81	9.11	21.92	48.19	26.27	AVG	P	
3 *	0.4920	41.73	9.18	50.91	56.13	5.22	QP	P	
4	0.4920	23.22	9.18	32.40	46.13	13.73	AVG	P	
5	1.0094	33.15	9.29	42.44	56.00	13.56	QP	P	
6	1.0094	15.76	9.29	25.05	46.00	20.95	AVG	P	
7	2.2200	30.99	9.58	40.57	56.00	15.43	QP	P	
8	2.2200	8.06	9.58	17.64	46.00	28.36	AVG	P	
9	3.8895	31.00	9.50	40.50	56.00	15.50	QP	P	
10	3.8895	9.55	9.50	19.05	46.00	26.95	AVG	P	
11	10.6889	42.49	9.92	52.41	60.00	7.59	QP	P	
12	10.6889	29.89	9.92	39.81	50.00	10.19	AVG	P	



Temperature:	25 °C	Relative Humidity:	54%
Pressure:	1010hPa	Phase :	N
Test Voltage :	AC 120V/60Hz	Test Mode:	Mode 5



Remark:

Margin = Limit – Level, Correct Factor = Cable lose + LISN insertion loss, Level= Reading + Correct factor

No.	Frequency (MHz)	Reading (dBuV)	Factor (dB)	Level (dBuV)	Limit (dBuV)	Margin (dB)	Detector	P/F	Remark
1	0.3750	35.75	9.19	44.94	58.39	13.45	QP	P	
2	0.3750	20.97	9.19	30.16	48.39	18.23	AVG	P	
3	0.4875	42.64	9.36	52.00	56.21	4.21	QP	P	
4	0.4875	28.95	9.36	38.31	46.21	7.90	AVG	P	
5	0.9600	37.28	9.38	46.66	56.00	9.34	QP	P	
6	0.9600	22.01	9.38	31.39	46.00	14.61	AVG	P	
7	1.4144	35.01	9.58	44.59	56.00	11.41	QP	P	
8	1.4144	18.85	9.58	28.43	46.00	17.57	AVG	P	
9	4.0965	32.63	9.80	42.43	56.00	13.57	QP	P	
10	4.0965	17.56	9.80	27.36	46.00	18.64	AVG	P	
11 *	10.8375	46.73	10.11	56.84	60.00	3.16	QP	P	
12	10.8375	31.93	10.11	42.04	50.00	7.96	AVG	P	

**3.2 RADIATED EMISSION MEASUREMENT****3.2.1 RADIATED EMISSION LIMITS (Frequency Range 9kHz-1000MHz)**

In case the emission fall within the restricted band specified on 15.205(a), then the 15.209(a) limit in the table below has to be followed.

Frequencies (MHz)	Field Strength (micovolts/meter)	Measurement Distance (meters)
0.009~0.490	2400/F(KHz)	300
0.490~1.705	24000/F(KHz)	30
1.705~30.0	30	30
30~88	100	3
88~216	150	3
216~960	200	3
Above 960	500	3

LIMITS OF RADIATED EMISSION MEASUREMENT (Above 1000MHz)

FREQUENCY (MHz)	Limit (dBuV/m) (at 3M)	
	PEAK	AVERAGE
Above 1000	74	54

Notes:

- (1) The limit for radiated test was performed according to FCC PART 15C.
- (2) The tighter limit applies at the band edges.
- (3) Emission level (dBuV/m)=20log Emission level (uV/m).

Spectrum Parameter	Setting
Attenuation	Auto
Start Frequency	1000 MHz
Stop Frequency	25GHz
RB / VB (emission in restricted band)	1 MHz / 1 MHz for Peak, 1 MHz / 10Hz for Average

Receiver Parameter	Setting
Attenuation	Auto
Start ~ Stop Frequency	9kHz~150kHz / RB 200Hz for QP
Start ~ Stop Frequency	150kHz~30MHz / RB 9kHz for QP
Start ~ Stop Frequency	30MHz~1000MHz / RB 120kHz for QP

3.2.2 TEST PROCEDURE

Below 1GHz test procedure as below:

- The EUT was placed on the top of a rotating table 0.8 meters above the ground at a 3 meter semi-anechoic chamber. The table was rotated 360 degrees to determine the position of the highest radiation.
- The EUT was set 3 meters away from the interference-receiving antenna, which was mounted on the top of a variable-height antenna tower.
- The antenna height is varied from one meter to four meters above the ground to determine the maximum value of the field strength. Both horizontal and vertical polarizations of the antenna are set to make the measurement.
- For each suspected emission, the EUT was arranged to its worst case and then the antenna was tuned to heights from 1 meter to 4 meters (for the test frequency of below 30MHz, the antenna was tuned to heights 1 meter) and the rotatable table was turned from 0 degrees to 360 degrees to find the maximum reading.
- The test-receiver system was set to Peak Detect Function and Specified Bandwidth with Maximum Hold Mode.
- If the emission level of the EUT in peak mode was 10dB lower than the limit specified, then testing could be stopped and the peak values of the EUT would be reported. Otherwise the emissions that did not have 10dB margin would be re-tested one by one using peak, quasi-peak or average method as specified and then reported in a data sheet.

Above 1GHz test procedure as below:

- Different between above is the test site, change from Semi- Anechoic Chamber to fully Anechoic Chamber and change form table 0.8 metre to 0.8 metre(Above 18GHz the distance is 1 meter and table is 1.5 metre).
- Test the EUT in the lowest channel, the middle channel, the Highest channel

Note:

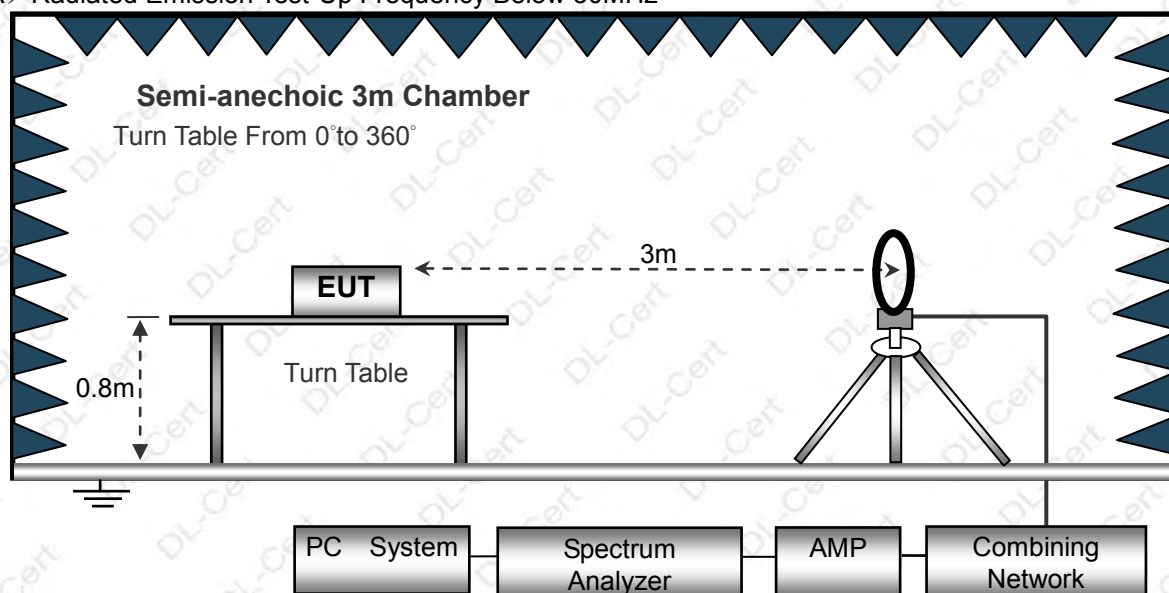
Both horizontal and vertical antenna polarities were tested and performed pretest to three orthogonal axis. The worst case emissions were reported

3.2.3 DEVIATION FROM TEST STANDARD

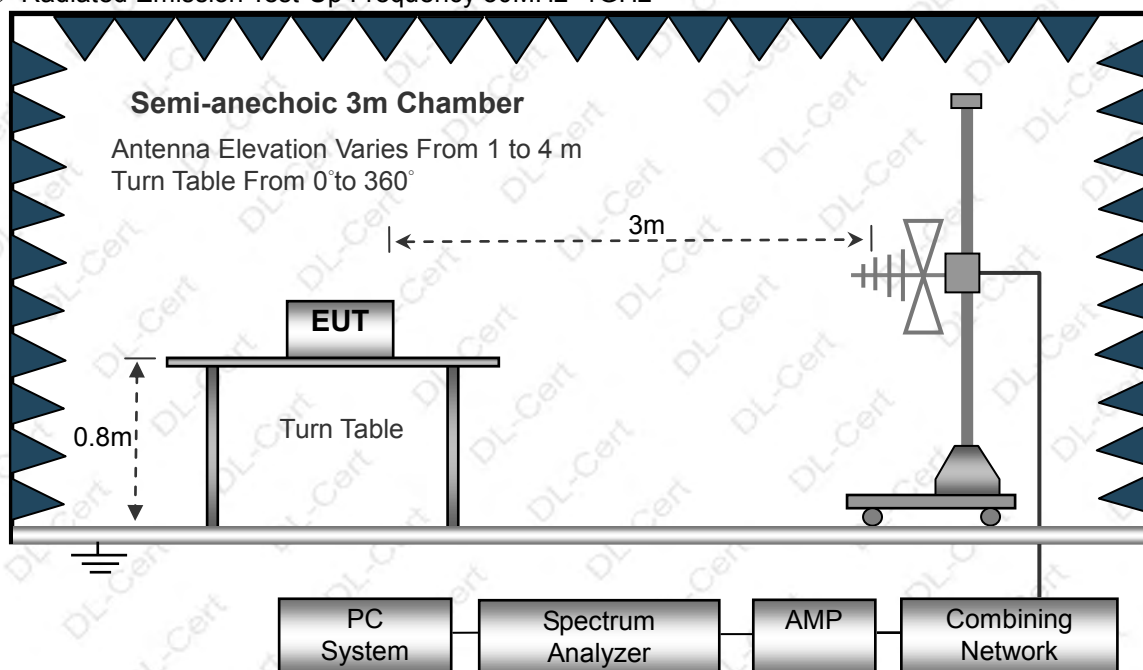
No deviation

3.2.4 TEST SETUP

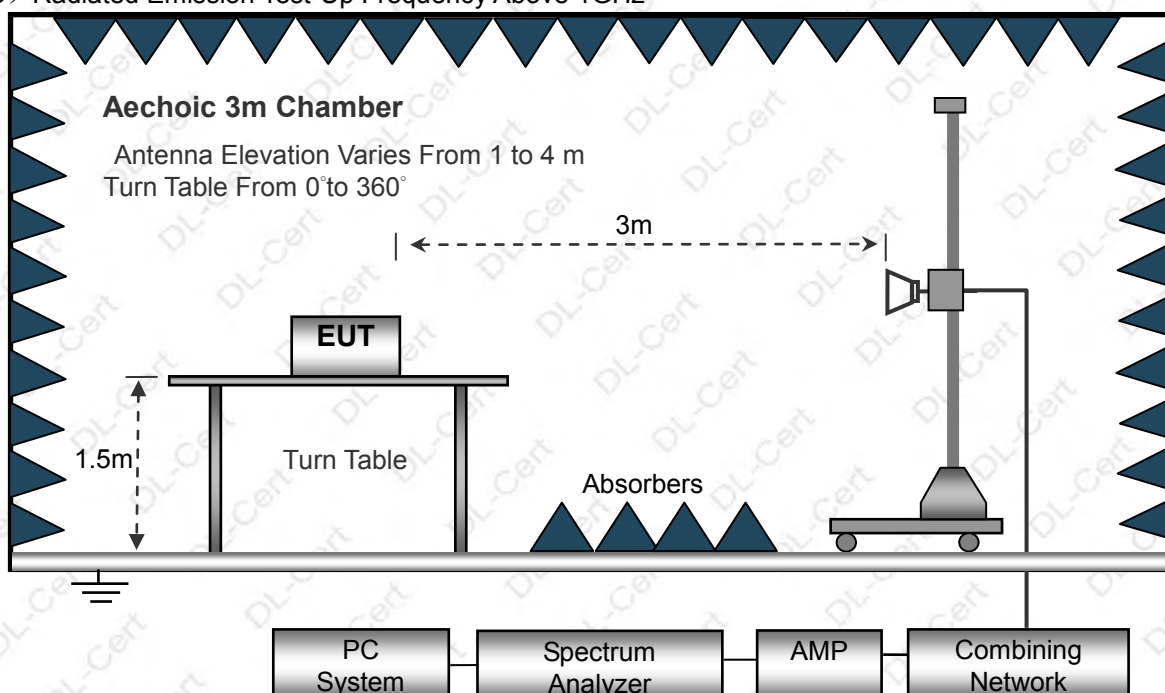
(A) Radiated Emission Test-Up Frequency Below 30MHz



(B) Radiated Emission Test-Up Frequency 30MHz~1GHz



(C) Radiated Emission Test-Up Frequency Above 1GHz



3.2.5 EUT OPERATING CONDITIONS

The EUT tested system was configured as the statements of 2.3 Unless otherwise a special operating condition is specified in the follows during the testing.

**3.2.6 TEST RESULTS (BETWEEN 9KHZ – 30 MHZ)**

Temperature:	20°C	Relative Humidity:	48%
Pressure:	1010 hPa	Test Voltage :	DC 3.7V
Test Mode :	Mode 5	Polarization :	--

Freq. (MHz)	Reading (dBuV/m)	Limit (dBuV/m)	Margin (dB)	State P/F
--	--	--	--	PASS
--	--	--	--	PASS

NOTE:

The amplitude of spurious emissions which are attenuated by more than 20dB below the permissible value has no need to be reported.

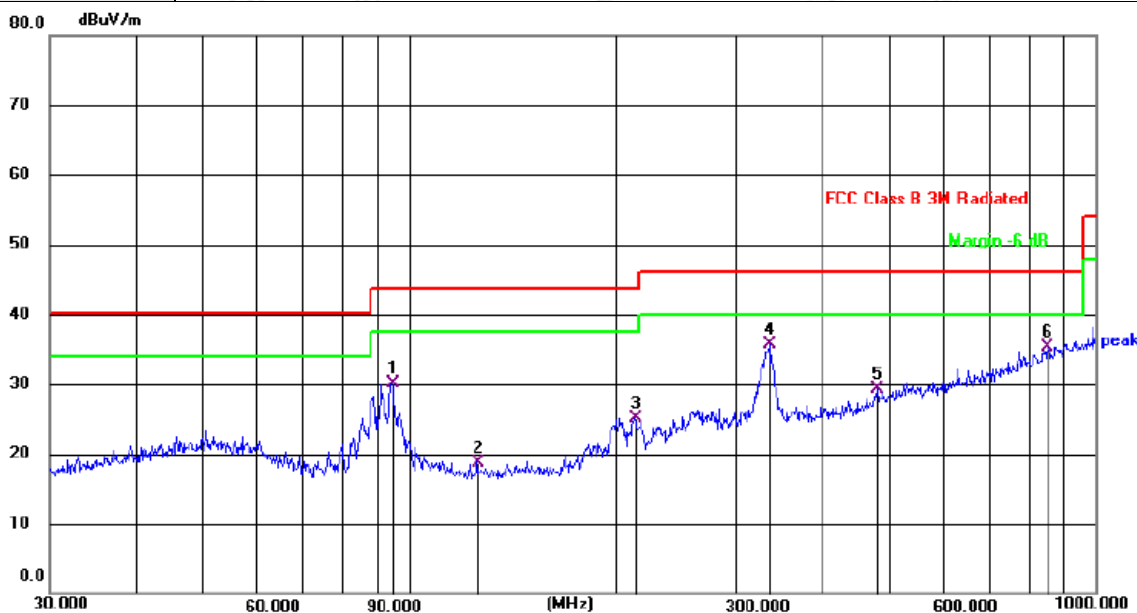
Distance extrapolation factor = $40 \log(\text{specific distance}/\text{test distance})$ (dB);

Limit line = specific limits(dBuv) + distance extrapolation factor.



3.2.7 TEST RESULTS (BETWEEN 30MHZ – 1GHZ)

Temperature:	26°C	Relative Humidity:	54%
Pressure:	1010 hPa	Polarization :	Horizontal
Test Voltage :	DC 3.7V		
Test Mode :	Mode 5		



No.	Mk.	Freq. MHz	Reading Level dBuV	Correct Factor dB	Measure- ment dBuV/m	Limit dB/m	Over dB	Detector
1		94.4284	45.46	-15.40	30.06	43.50	13.44	QP
2		125.8864	34.65	-15.85	18.80	43.50	24.70	QP
3		213.0151	38.06	-12.90	25.16	43.50	18.34	QP
4	*	334.8589	45.99	-10.21	35.78	46.00	10.22	QP
5		480.5276	36.61	-7.25	29.36	46.00	16.64	QP
6		851.0353	36.95	-1.66	35.29	46.00	10.71	QP

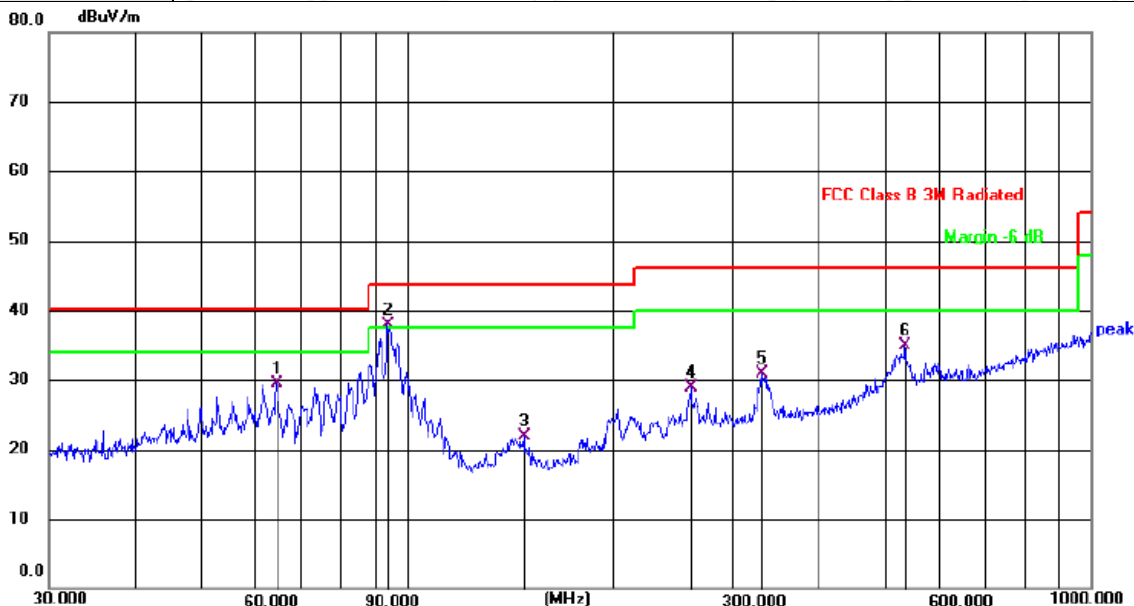
Remark:

Correct Factor = Cable loss + Antenna factor – Preamplifier;

Level = Reading Level + Correct Factor; Margin = Limit – Level;



Temperature:	26°C	Relative Humidity:	54%
Pressure:	1010 hPa	Polarization :	Vertical
Test Voltage :	DC 3.7V		
Test Mode :	Mode 5		



No.	Mk.	Freq. MHz	Reading Level dBuV	Correct Factor dB	Measure- ment dBuV/m	Limit dB/m	Over dB	Detector
1		64.4331	42.76	-13.31	29.45	40.00	10.55	QP
2	*	93.7685	53.02	-15.08	37.94	43.50	5.56	QP
3		148.4410	38.43	-16.45	21.98	43.50	21.52	QP
4		260.1444	39.61	-10.68	28.93	46.00	17.07	QP
5		330.1949	40.08	-9.21	30.87	46.00	15.13	QP
6		533.8321	40.34	-5.47	34.87	46.00	11.13	QP

Remark:

Correct Factor = Cable loss + Antenna factor – Preamplifier;

Level = Reading Level + Correct Factor; Margin = Limit – Level;



3.2.8 TEST RESULTS (1GHZ~25GHZ)

802.11b

Polar (H/V)	Frequency	Meter Reading	Pre-amplifier	Cable Loss	Antenna Factor	Emission Level	Limits	Margin	Detector Type
	(MHz)	(dBuV)	(dB)	(dB)	(dB/m)	(dBuV/m)	(dBuV/m)	(dB)	
operation frequency:2412									
V	4824	67.69	50.65	6.88	31.29	55.21	74	-18.79	PK
V	4824	55.54	50.65	6.88	31.29	43.06	54	-10.94	AV
V	7236	66.01	49.98	7.16	36.63	59.82	74	-14.18	PK
V	7236	46.28	49.98	7.16	36.63	40.09	54	-13.91	AV
V	16087	48.18	51.53	11.34	41.52	49.51	74	-24.49	PK
H	4824	66.63	50.65	6.88	31.29	54.15	74	-19.85	PK
H	4824	55.24	50.65	6.88	31.29	42.76	54	-11.24	AV
H	7236	69.27	49.98	7.16	36.63	63.08	74	-10.92	PK
H	7236	45.62	49.98	7.16	36.63	39.43	54	-14.57	AV
H	16087	48.15	51.53	11.34	41.52	49.48	74	-24.52	PK
operation frequency:2437									
V	4874	67.53	50.67	6.89	31.38	55.13	74	-18.87	PK
V	4874	55.04	50.67	6.89	31.38	42.64	54	-11.36	AV
V	7311	69.37	50.02	7.24	36.63	63.22	74	-10.78	PK
V	7311	46.46	50.02	7.24	36.63	40.31	54	-13.69	AV
V	16087	48.14	51.53	11.34	41.52	49.47	74	-24.53	PK
H	4874	66.03	50.67	6.89	31.38	53.63	74	-20.37	PK
H	4874	55.35	50.67	6.89	31.38	42.95	54	-11.05	AV
H	7311	69.26	50.02	7.24	36.63	63.11	74	-10.89	PK
H	7311	47.24	50.02	7.24	36.63	41.09	54	-12.91	AV
H	16087	48.35	51.53	11.34	41.52	49.68	74	-24.32	PK
operation frequency:2462									
V	4924	68.54	50.79	6.83	31.36	55.94	74	-18.06	PK
V	4924	55.36	50.79	6.83	31.36	42.76	54	-11.24	AV
V	7386	69.21	50.11	7.25	36.58	62.93	74	-11.07	PK
V	7386	46.28	50.11	7.25	36.58	40	54	-14	AV
V	16087	49.45	51.53	11.34	41.52	50.78	74	-23.22	PK
H	4924	67.31	50.79	6.83	31.36	54.71	74	-19.29	PK
H	4924	55.25	50.79	6.83	31.36	42.65	54	-11.35	AV
H	7386	67.17	50.11	7.25	36.58	60.89	74	-13.11	PK
H	7386	48.33	50.11	7.25	36.58	42.05	54	-11.95	AV
H	16087	49.18	51.53	11.34	41.52	50.51	74	-23.49	PK

Remark:

1. Emission Level = Meter Reading + Antenna Factor + Cable Loss – Pre-amplifier,
Margin= Emission Level - Limit
2. If peak below the average limit, the average emission was no test.
3. The amplitude of spurious emissions which are attenuated by more than 20dB below the permissible value has no need to be reported.



802.11g

Polar (H/V)	Frequency	Meter Reading	Pre-amplifier	Cable Loss	Antenna Factor	Emission Level	Limits	Margin	Detector Type
	(MHz)	(dBuV)	(dB)	(dB)	(dB/m)	(dBuV/m)	(dBuV/m)	(dB)	
operation frequency:2412									
V	4824	67.36	50.65	6.88	31.29	54.88	74	-19.12	PK
V	4824	55.14	50.65	6.88	31.29	42.66	54	-11.34	AV
V	7236	66.53	49.98	7.16	36.63	60.34	74	-13.66	PK
V	7236	46.54	49.98	7.16	36.63	40.35	54	-13.65	AV
V	16087	49.83	51.53	11.34	41.52	51.16	74	-22.84	PK
H	4824	69.22	50.65	6.88	31.29	56.74	74	-17.26	PK
H	4824	52.13	50.65	6.88	31.29	39.65	54	-14.35	AV
H	7236	66.18	49.98	7.16	36.63	59.99	74	-14.01	PK
H	7236	47.36	49.98	7.16	36.63	41.17	54	-12.83	AV
H	16087	47.23	51.53	11.34	41.52	48.56	74	-25.44	PK
operation frequency:2437									
V	4874	67.14	50.67	6.89	31.38	54.74	74	-19.26	PK
V	4874	55.26	50.67	6.89	31.38	42.86	54	-11.14	AV
V	7311	66.18	50.02	7.24	36.63	60.03	74	-13.97	PK
V	7311	46.23	50.02	7.24	36.63	40.08	54	-13.92	AV
V	16087	48.54	51.53	11.34	41.52	49.87	74	-24.13	PK
H	4874	66.32	50.67	6.89	31.38	53.92	74	-20.08	PK
H	4874	55.25	50.67	6.89	31.38	42.85	54	-11.15	AV
H	7311	65.17	50.02	7.24	36.63	59.02	74	-14.98	PK
H	7311	47.39	50.02	7.24	36.63	41.24	54	-12.76	AV
H	16087	48.45	51.53	11.34	41.52	49.78	74	-24.22	PK
operation frequency:2462									
V	4924	67.23	50.79	6.83	31.36	54.63	74	-19.37	PK
V	4924	55.18	50.79	6.83	31.36	42.58	54	-11.42	AV
V	7386	66.24	50.11	7.25	36.58	59.96	74	-14.04	PK
V	7386	47.57	50.11	7.25	36.58	41.29	54	-12.71	AV
V	16087	46.26	51.53	11.34	41.52	47.59	74	-26.41	PK
H	4924	66.21	50.79	6.83	31.36	53.61	74	-20.39	PK
H	4924	54.28	50.79	6.83	31.36	41.68	54	-12.32	AV
H	7386	65.56	50.11	7.25	36.58	59.28	74	-14.72	PK
H	7386	45.34	50.11	7.25	36.58	39.06	54	-14.94	AV
H	16087	47.68	51.53	11.34	41.52	49.01	74	-24.99	PK

Remark:

1. Emission Level = Meter Reading + Antenna Factor + Cable Loss – Pre-amplifier,
Margin= Emission Level - Limit
2. If peak below the average limit, the average emission was no test.
3. The amplitude of spurious emissions which are attenuated by more than 20dB below the permissible value has no need to be reported.



802.11n HT20

Polar (H/V)	Frequency	Meter Reading	Pre-amplifier	Cable Loss	Antenna Factor	Emission Level	Limits	Margin	Detector Type
	(MHz)	(dBUV)	(dB)	(dB)	(dB/m)	(dBUV/m)	(dBUV/m)	(dB)	
operation frequency:2412									
V	4824	66.33	50.65	6.88	31.29	53.85	74	-20.15	PK
V	4824	55.14	50.65	6.88	31.29	42.66	54	-11.34	AV
V	7236	66.58	49.98	7.16	36.63	60.39	74	-13.61	PK
V	7236	46.17	49.98	7.16	36.63	39.98	54	-14.02	AV
V	16087	46.43	51.53	11.34	41.52	47.76	74	-26.24	PK
H	4824	66.52	50.65	6.88	31.29	54.04	74	-19.96	PK
H	4824	55.28	50.65	6.88	31.29	42.8	54	-11.2	AV
H	7236	64.31	49.98	7.16	36.63	58.12	74	-15.88	PK
H	7236	47.46	49.98	7.16	36.63	41.27	54	-12.73	AV
H	16087	47.57	51.53	11.34	41.52	48.9	74	-25.1	PK
operation frequency:2437									
V	4874	66.28	50.67	6.89	31.38	53.88	74	-20.12	PK
V	4874	54.46	50.67	6.89	31.38	42.06	54	-11.94	AV
V	7311	65.07	50.02	7.24	36.63	58.92	74	-15.08	PK
V	7311	47.47	50.02	7.24	36.63	41.32	54	-12.68	AV
V	16087	47.54	51.53	11.34	41.52	48.87	74	-25.13	PK
H	4874	65.36	50.67	6.89	31.38	52.96	74	-21.04	PK
H	4874	53.43	50.67	6.89	31.38	41.03	54	-12.97	AV
H	7311	65.28	50.02	7.24	36.63	59.13	74	-14.87	PK
H	7311	46.36	50.02	7.24	36.63	40.21	54	-13.79	AV
H	16087	46.57	51.53	11.34	41.52	47.9	74	-26.1	PK
operation frequency:2462									
V	4924	67.07	50.79	6.83	31.36	54.47	74	-19.53	PK
V	4924	54.43	50.79	6.83	31.36	41.83	54	-12.17	AV
V	7386	64.61	50.11	7.25	36.58	58.33	74	-15.67	PK
V	7386	46.36	50.11	7.25	36.58	40.08	54	-13.92	AV
V	16087	48.57	51.53	11.34	41.52	49.9	74	-24.1	PK
H	4924	67.18	50.79	6.83	31.36	54.58	74	-19.42	PK
H	4924	54.46	50.79	6.83	31.36	41.86	54	-12.14	AV
H	7386	65.48	50.11	7.25	36.58	59.2	74	-14.8	PK
H	7386	47.54	50.11	7.25	36.58	41.26	54	-12.74	AV
H	16087	47.26	51.53	11.34	41.52	48.59	74	-25.41	PK

Remark:

1. Emission Level = Meter Reading + Antenna Factor + Cable Loss – Pre-amplifier, Margin= Emission Level - Limit
2. If peak below the average limit, the average emission was no test.
3. The amplitude of spurious emissions which are attenuated by more than 20dB below the permissible value has no need to be reported.



802.11n HT40

Polar (H/V)	Frequency	Meter Reading	Pre-amplifier	Cable Loss	Antenna Factor	Emission Level	Limits	Margin	Detector Type
	(MHz)	(dBUV)	(dB)	(dB)	(dB/m)	(dBUV/m)	(dBUV/m)	(dB)	
operation frequency:2422									
V	4844	66.27	50.67	6.89	31.32	53.81	74	-20.19	PK
V	4844	55.25	50.67	6.89	31.32	42.79	54	-11.21	AV
V	7266	66.36	50.01	7.15	36.62	60.12	74	-13.88	PK
V	7266	46.04	50.01	7.15	36.62	39.8	54	-14.2	AV
V	16087	46.37	51.53	11.34	41.52	47.7	74	-26.3	PK
H	4844	66.26	50.67	6.89	31.32	53.8	74	-20.2	PK
H	4844	55.48	50.67	6.89	31.32	43.02	54	-10.98	AV
H	7266	64.11	50.01	7.15	36.62	57.87	74	-16.13	PK
H	7266	47.17	50.01	7.15	36.62	40.93	54	-13.07	AV
H	16087	47.23	51.53	11.34	41.52	48.56	74	-25.44	PK
operation frequency:2437									
V	4874	66.15	50.67	6.89	31.38	53.75	74	-20.25	PK
V	4874	54.37	50.67	6.89	31.38	41.97	54	-12.03	AV
V	7311	65.16	50.02	7.24	36.63	59.01	74	-14.99	PK
V	7311	46.34	50.02	7.24	36.63	40.19	54	-13.81	AV
V	16087	47.59	51.53	11.34	41.52	48.92	74	-25.08	PK
H	4874	65.16	50.67	6.89	31.38	52.76	74	-21.24	PK
H	4874	53.23	50.67	6.89	31.38	40.83	54	-13.17	AV
H	7311	65.48	50.02	7.24	36.63	59.33	74	-14.67	PK
H	7311	47.15	50.02	7.24	36.63	41	54	-13	AV
H	16087	46.29	51.53	11.34	41.52	47.62	74	-26.38	PK
operation frequency:2452									
V	4904	67.72	50.76	6.81	31.31	55.08	74	-18.92	PK
V	4904	54.31	50.76	6.81	31.31	41.67	54	-12.33	AV
V	7356	64.24	50.08	7.21	36.52	57.89	74	-16.11	PK
V	7356	47.58	50.08	7.21	36.52	41.23	54	-12.77	AV
V	16087	48.23	51.53	11.34	41.52	49.56	74	-24.44	PK
H	4904	67.24	50.76	6.81	31.31	54.6	74	-19.4	PK
H	4904	54.37	50.76	6.81	31.31	41.73	54	-12.27	AV
H	7356	65.46	50.08	7.21	36.52	59.11	74	-14.89	PK
H	7356	46.21	50.08	7.21	36.52	39.86	54	-14.14	AV
H	16087	47.14	51.53	11.34	41.52	48.47	74	-25.53	PK

Remark:

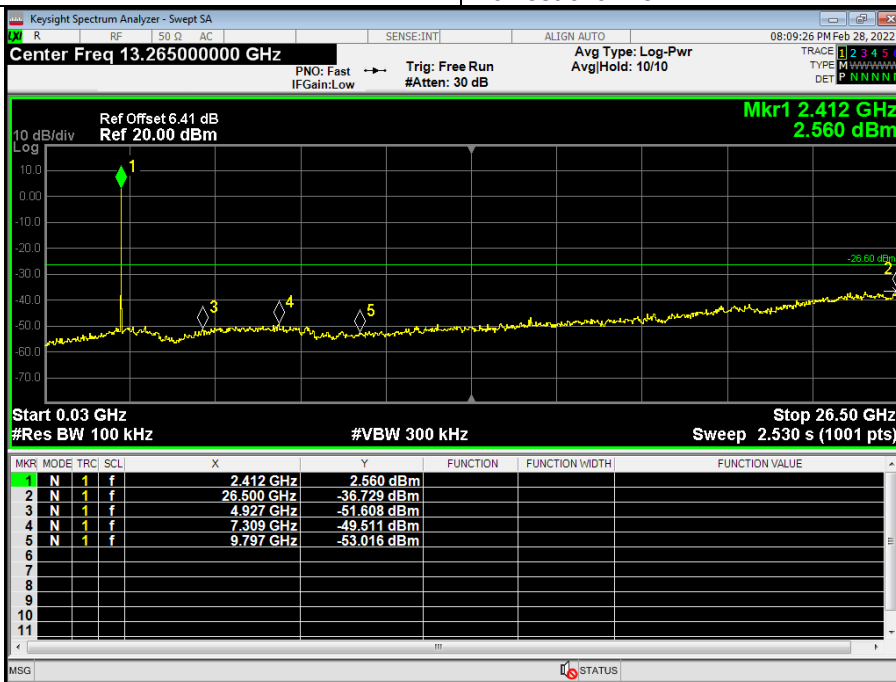
1. Emission Level = Meter Reading + Antenna Factor + Cable Loss – Pre-amplifier, Margin= Emission Level - Limit
2. If peak below the average limit, the average emission was no test.
3. The amplitude of spurious emissions which are attenuated by more than 20dB below the permissible value has no need to be reported.



For Conducted

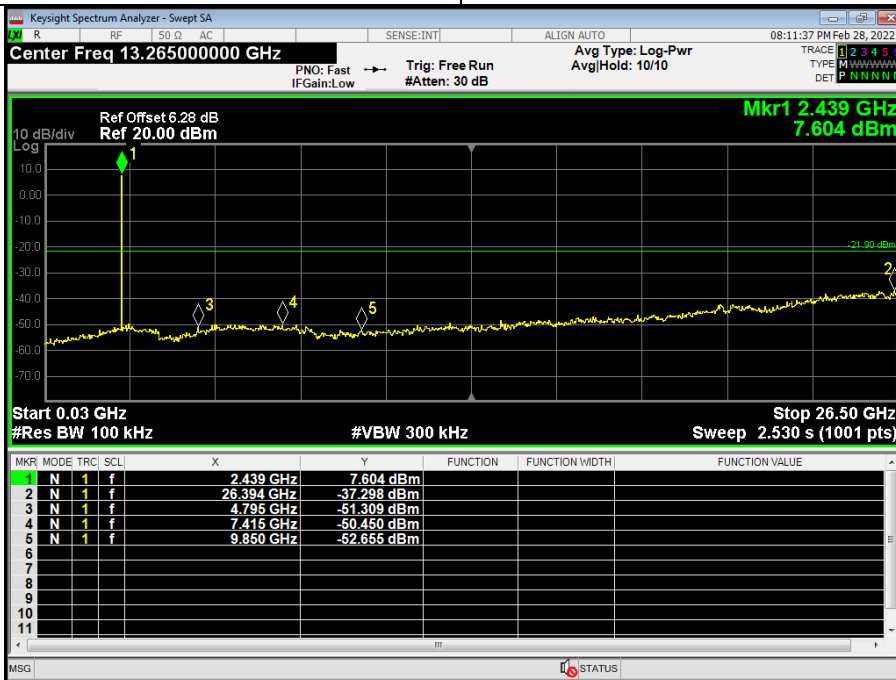
During the test, pre-scan the all modulation, and found the 802.11b mode which it is worse case.

Test channel: Lowest channel



0.03GHz~25GHz

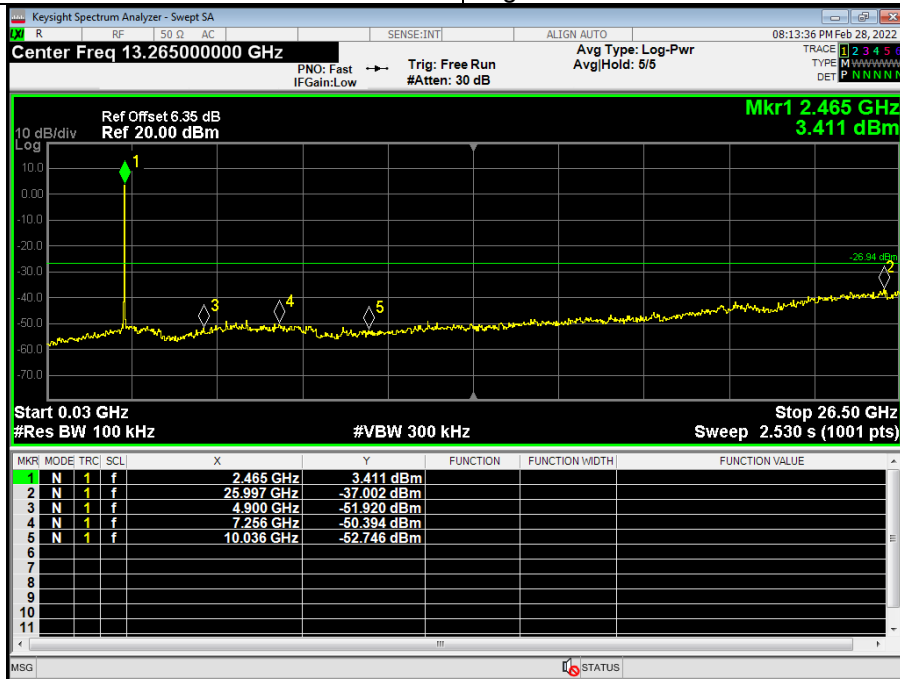
Test channel: Middle channel



0.03GHz~25GHz



Test channel: _____ Highest channel: _____



0.03GHz~25GHz



3.3 RADIATED BAND EMISSION MEASUREMENT

3.3.1 TEST REQUIREMENT:

FCC Part15 C Section 15.209 and 15.205

LIMITS OF RADIATED EMISSION MEASUREMENT (Above 1000MHz)

FREQUENCY (MHz)	Limit (dBuV/m) (at 3M)	
	PEAK	AVERAGE
Above 1000	74	54

Notes:

- (1) The limit for radiated test was performed according to FCC PART 15C.
- (2) The tighter limit applies at the band edges.
- (3) Emission level (dBuV/m)=20log Emission level (uV/m).

Spectrum Parameter	Setting
Attenuation	Auto
Start Frequency	2300MHz
Stop Frequency	2520
RB / VB (emission in restricted band)	1 MHz / 1 MHz for Peak, 1 MHz / 10Hz for Average

3.3.2 TEST PROCEDURE

Above 1GHz test procedure as below:

- a. 1. The EUT was placed on the top of a rotating table 0.1 meters above the ground at a 3 meter camber. The table was rotated 360 degrees to determine the position of the highest radiation.
- b. The EUT was set 3 meters away from the interference-receiving antenna, which was mounted on the top of a variable-height antenna tower.
- c. The antenna height is varied from one meter to four meters above the ground to determine the maximum value of the field strength. Both horizontal and vertical polarizations of the antenna are set to make the measurement.
- d. For each suspected emission, the EUT was arranged to its worst case and then the antenna was tuned to heights from 1 meter to 4 meters and the rota table was turned from 0 degrees to 360 degrees to find the maximum reading.
- e. The test-receiver system was set to Peak Detect Function and Specified Bandwidth with Maximum Hold Mode.
- f. If the emission level of the EUT in peak mode was 10dB lower than the limit specified, then testing could be stopped and the peak values of the EUT would be reported. Otherwise the emissions that did not have 10dB margin would be re-tested one by one using peak, quasi-peak or average method as specified and then reported in a data sheet.
- g. Test the EUT in the lowest channel,the Highest channel

Note:

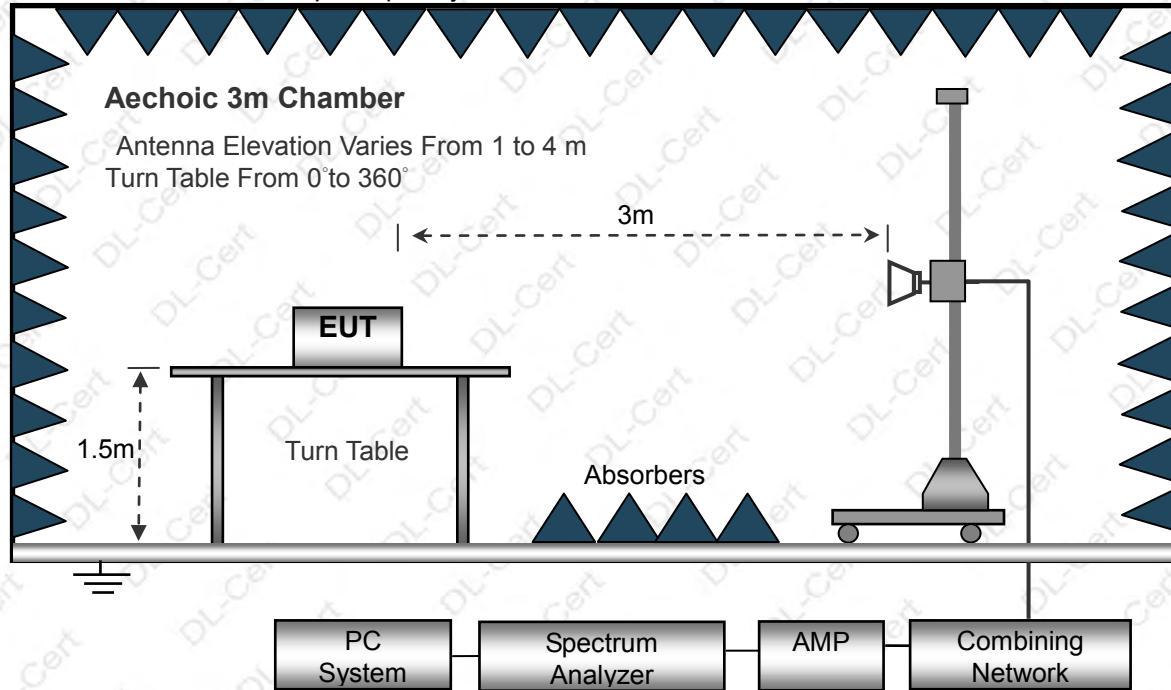
Both horizontal and vertical antenna polarities were tested and performed pretest to three orthogonal axis. The worst case emissions were reported

3.3.3 DEVIATION FROM TEST STANDARD

No deviation

3.3.4 TEST SETUP

Radiated Emission Test-Up Frequency Above 1GHz



3.3.5 EUT OPERATING CONDITIONS

The EUT tested system was configured as the statements of 2.3 Unless otherwise a special operating condition is specified in the follows during the testing.



3.3.6 TEST RESULT

802.11b

Polar (H/V)	Frequency	Meter Reading	Pre-amplifier	Cable Loss	Antenna Factor	Emission Level	Limits	Margin	Detector Type
	(MHz)	(dBuV)	(dB)	(dB)	(dB/m)	(dBuV/m)	(dBuV/m)	(dB)	
operation frequency:2412									
V	2390	76.76	52.12	2.73	27.38	54.75	74	-19.25	PK
V	2390	65.28	52.12	2.73	27.38	43.27	54	-10.73	AV
V	2400	76.63	52.16	2.78	27.41	54.66	74	-19.34	PK
V	2400	64.28	52.16	2.78	27.41	42.31	54	-11.69	AV
H	2390	76.11	52.12	2.73	27.38	54.1	74	-19.9	PK
H	2390	65.63	52.12	2.73	27.38	43.62	54	-10.38	AV
H	2400	76.33	52.16	2.78	27.41	54.36	74	-19.64	PK
H	2400	65.46	52.16	2.78	27.41	43.49	54	-10.51	AV

Polar (H/V)	Frequency	Meter Reading	Pre-amplifier	Cable Loss	Antenna Factor	Emission Level	Limits	Margin	Detector Type
	(MHz)	(dBuV)	(dB)	(dB)	(dB/m)	(dBuV/m)	(dBuV/m)	(dB)	
operation frequency:2462									
V	2483.5	76.24	52.23	2.86	27.44	54.31	74	-19.69	PK
V	2483.5	65.71	52.23	2.86	27.44	43.78	54	-10.22	AV
V	2500	76.08	52.26	2.88	27.49	54.19	74	-19.81	PK
V	2500	64.11	52.26	2.88	27.49	42.22	54	-11.78	AV
H	2483.5	76.63	52.23	2.86	27.44	54.7	74	-19.3	PK
H	2483.5	65.19	52.23	2.86	27.44	43.26	54	-10.74	AV
H	2500	76.26	52.26	2.88	27.49	54.37	74	-19.63	PK
H	2500	65.17	52.26	2.88	27.49	43.28	54	-10.72	AV

Remark:

1. Emission Level = Meter Reading + Antenna Factor + Cable Loss – Pre-amplifier, Margin= Emission Level - Limit
2. If peak below the average limit, the average emission was no test.
3. The amplitude of spurious emissions which are attenuated by more than 20dB below the permissible value has no need to be reported.



802.11g

Polar (H/V)	Frequency	Meter Reading	Pre-amplifier	Cable Loss	Antenna Factor	Emission Level	Limits	Margin	Detector Type
	(MHz)	(dBuV)	(dB)	(dB)	(dB/m)	(dBuV/m)	(dBuV/m)	(dB)	
operation frequency:2412									
V	2390	76.46	52.12	2.73	27.38	54.45	74	-19.55	PK
V	2390	65.37	52.12	2.73	27.38	43.36	54	-10.64	AV
V	2400	76.19	52.16	2.78	27.41	54.22	74	-19.78	PK
V	2400	64.34	52.16	2.78	27.41	42.37	54	-11.63	AV
H	2390	76.59	52.12	2.73	27.38	54.58	74	-19.42	PK
H	2390	65.17	52.12	2.73	27.38	43.16	54	-10.84	AV
H	2400	76.22	52.16	2.78	27.41	54.25	74	-19.75	PK
H	2400	65.18	52.16	2.78	27.41	43.21	54	-10.79	AV

Polar (H/V)	Frequency	Meter Reading	Pre-amplifier	Cable Loss	Antenna Factor	Emission Level	Limits	Margin	Detector Type
	(MHz)	(dBuV)	(dB)	(dB)	(dB/m)	(dBuV/m)	(dBuV/m)	(dB)	
operation frequency:2462									
V	2483.5	76.29	52.23	2.86	27.44	54.36	74	-19.64	PK
V	2483.5	65.17	52.23	2.86	27.44	43.24	54	-10.76	AV
V	2500	76.37	52.26	2.88	27.49	54.48	74	-19.52	PK
V	2500	65.56	52.26	2.88	27.49	43.67	54	-10.33	AV
H	2483.5	76.27	52.23	2.86	27.44	54.34	74	-19.66	PK
H	2483.5	65.19	52.23	2.86	27.44	43.26	54	-10.74	AV
H	2500	76.56	52.26	2.88	27.49	54.67	74	-19.33	PK
H	2500	65.74	52.26	2.88	27.49	43.85	54	-10.15	AV

Remark:

1. Emission Level = Meter Reading + Antenna Factor + Cable Loss – Pre-amplifier,
Margin= Emission Level - Limit
2. If peak below the average limit, the average emission was no test.
3. The amplitude of spurious emissions which are attenuated by more than 20dB below the permissible value has no need to be reported.



802.11n HT20

Polar (H/V)	Frequency	Meter Reading	Pre-amplifier	Cable Loss	Antenna Factor	Emission Level	Limits	Margin	Detector Type
	(MHz)	(dBuV)	(dB)	(dB)	(dB/m)	(dBuV/m)	(dBuV/m)	(dB)	
operation frequency:2412									
V	2390	76.26	52.12	2.73	27.38	54.25	74	-19.75	PK
V	2390	65.37	52.12	2.73	27.38	43.36	54	-10.64	AV
V	2400	77.19	52.16	2.78	27.41	55.22	74	-18.78	PK
V	2400	65.27	52.16	2.78	27.41	43.3	54	-10.7	AV
H	2390	77.09	52.12	2.73	27.38	55.08	74	-18.92	PK
H	2390	65.46	52.12	2.73	27.38	43.45	54	-10.55	AV
H	2400	76.33	52.16	2.78	27.41	54.36	74	-19.64	PK
H	2400	65.17	52.16	2.78	27.41	43.2	54	-10.8	AV

Polar (H/V)	Frequency	Meter Reading	Pre-amplifier	Cable Loss	Antenna Factor	Emission Level	Limits	Margin	Detector Type
	(MHz)	(dBuV)	(dB)	(dB)	(dB/m)	(dBuV/m)	(dBuV/m)	(dB)	
operation frequency:2462									
V	2483.5	77.06	52.23	2.86	27.44	55.13	74	-18.87	PK
V	2483.5	65.38	52.23	2.86	27.44	43.45	54	-10.55	AV
V	2500	76.19	52.26	2.88	27.49	54.3	74	-19.7	PK
V	2500	65.37	52.26	2.88	27.49	43.48	54	-10.52	AV
H	2483.5	77.46	52.23	2.86	27.44	55.53	74	-18.47	PK
H	2483.5	65.35	52.23	2.86	27.44	43.42	54	-10.58	AV
H	2500	76.08	52.26	2.88	27.49	54.19	74	-19.81	PK
H	2500	66.46	52.26	2.88	27.49	44.57	54	-9.43	AV

Remark:

1. Emission Level = Meter Reading + Antenna Factor + Cable Loss – Pre-amplifier, Margin= Emission Level - Limit
2. If peak below the average limit, the average emission was no test.
3. The amplitude of spurious emissions which are attenuated by more than 20dB below the permissible value has no need to be reported.



802.11n HT40

Polar (H/V)	Frequency	Meter Reading	Pre-amplifier	Cable Loss	Antenna Factor	Emission Level	Limits	Margin	Detector Type
	(MHz)	(dBuV)	(dB)	(dB)	(dB/m)	(dBuV/m)	(dBuV/m)	(dB)	
operation frequency:2422									
V	2390	76.09	52.12	2.73	27.38	54.08	74	-19.92	PK
V	2390	65.46	52.12	2.73	27.38	43.45	54	-10.55	AV
V	2400	77.18	52.16	2.78	27.41	55.21	74	-18.79	PK
V	2400	65.47	52.16	2.78	27.41	43.5	54	-10.5	AV
H	2390	77.16	52.12	2.73	27.38	55.15	74	-18.85	PK
H	2390	65.37	52.12	2.73	27.38	43.36	54	-10.64	AV
H	2400	76.14	52.16	2.78	27.41	54.17	74	-19.83	PK
H	2400	65.09	52.16	2.78	27.41	43.12	54	-10.88	AV

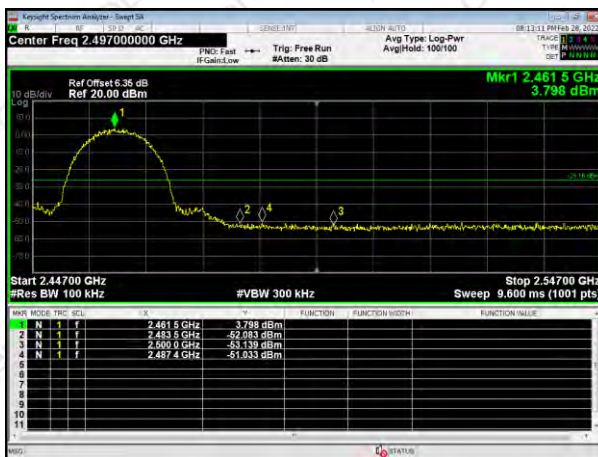
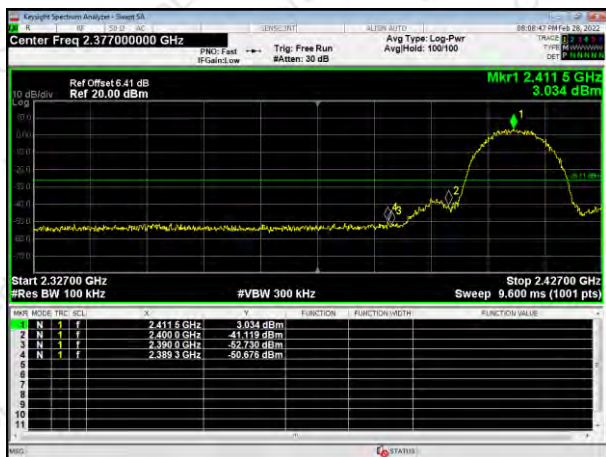
Polar (H/V)	Frequency	Meter Reading	Pre-amplifier	Cable Loss	Antenna Factor	Emission Level	Limits	Margin	Detector Type
	(MHz)	(dBuV)	(dB)	(dB)	(dB/m)	(dBuV/m)	(dBuV/m)	(dB)	
operation frequency:2452									
V	2483.5	77.11	52.23	2.86	27.44	55.18	74	-18.82	PK
V	2483.5	65.26	52.23	2.86	27.44	43.33	54	-10.67	AV
V	2500	76.34	52.26	2.88	27.49	54.45	74	-19.55	PK
V	2500	65.08	52.26	2.88	27.49	43.19	54	-10.81	AV
H	2483.5	77.22	52.23	2.86	27.44	55.29	74	-18.71	PK
H	2483.5	65.38	52.23	2.86	27.44	43.45	54	-10.55	AV
H	2500	76.11	52.26	2.88	27.49	54.22	74	-19.78	PK
H	2500	66.76	52.26	2.88	27.49	44.87	54	-9.13	AV

Remark:

1. Emission Level = Meter Reading + Antenna Factor + Cable Loss – Pre-amplifier,
Margin= Emission Level - Limit
2. If peak below the average limit, the average emission was no test.
3. The amplitude of spurious emissions which are attenuated by more than 20dB below the permissible value has no need to be reported.



For Conducted
802.11b



802.11g



802.11n HT20





802.11n HT40





4. AVERAGE OUTPUT POWER

4.1 APPLIED PROCEDURES / LIMIT

FCC Part15 (15.247) , Subpart C				
Section	Test Item	Limit	Frequency Range (MHz)	Result
15.247 (b)(3)	Peak Output Power	1 watt or 30dBm	2400-2483.5	PASS

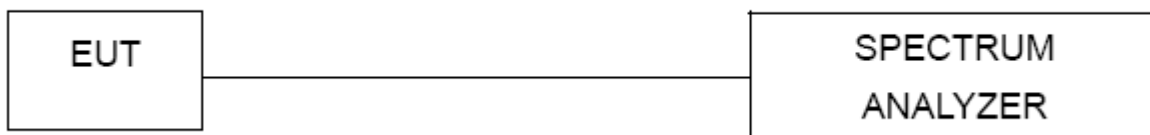
4.1.1 TEST PROCEDURE

- The EUT was directly connected to the spectrum analyzer and antenna output port as show in the block diagram below,
- Spectrum Setting : RBW > the 20 dB bandwidth of the emission being measured
Span = approximately 5 times the 20 dB bandwidth, centered on a hopping channel
VBW ≥ RBW
Sweep = auto
Detector function = peak
Trace = max hold

4.1.2 DEVIATION FROM STANDARD

No deviation.

4.1.3 TEST SETUP



4.1.4 EUT OPERATION CONDITIONS

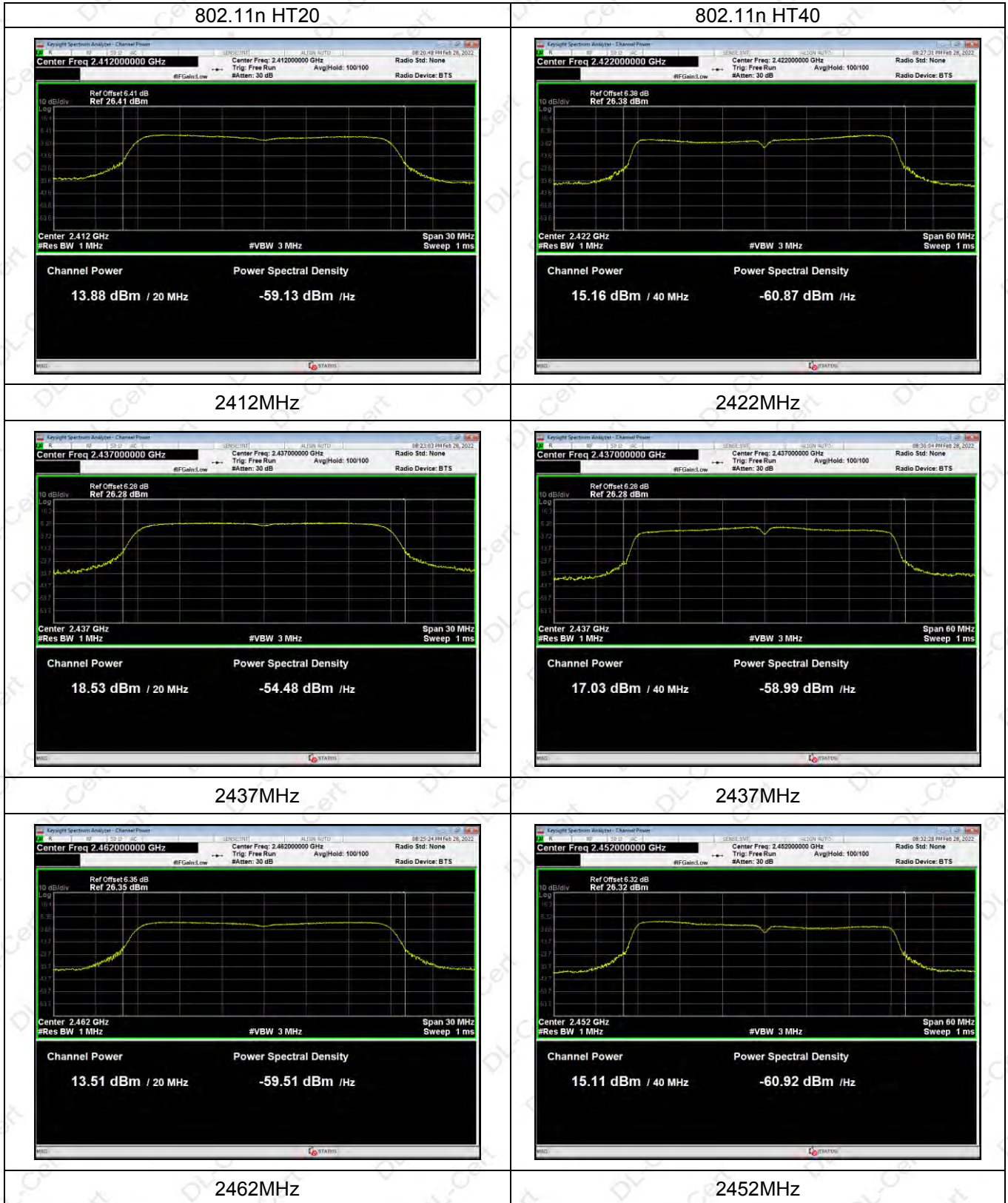
The EUT tested system was configured as the statements of 2.4 Unless otherwise a special operating condition is specified in the follows during the testing.

**4.1.5 TEST RESULTS**

Temperature:	25 °C	Relative Humidity:	60%
Pressure:	1012 hPa	Test Voltage :	DC 3.7V

Mode	Test Channel	Average Output Power (dBm)	LIMIT (dBm)
802.11b	Low	12.95	30.00
	Moddle	16.10	30.00
	High	13.03	30.00
802.11g	Low	12.59	30.00
	Moddle	16.67	30.00
	High	13.34	30.00
802.11n HT20	Low	13.88	30.00
	Moddle	18.53	30.00
	High	13.51	30.00
802.11n HT40	Low	15.16	30.00
	Moddle	17.04	30.00
	High	15.11	30.00







5. POWER SPECTRAL DENSITY TEST

5.1 APPLIED PROCEDURES / LIMIT

FCC Part15 (15.247) , Subpart C				
Section	Test Item	Limit	Frequency Range (MHz)	Result
15.247	Power Spectral Density	8 dBm (in any 3KHz)	2400-2483.5	PASS

Spectrum Parameters	Setting
Attenuation	Auto
Span Frequency	= the frequency band of operation
RB	RBW \geq 3kHz
VB	VBW \geq 3RBW
Detector	Peak
Trace	Max Hold
Sweep Time	Auto

5.1.1 TEST PROCEDURE

- The EUT was directly connected to the spectrum analyzer and antenna output port as show in the block diagram below,

5.1.2 DEVIATION FROM STANDARD

No deviation.

5.1.3 TEST SETUP

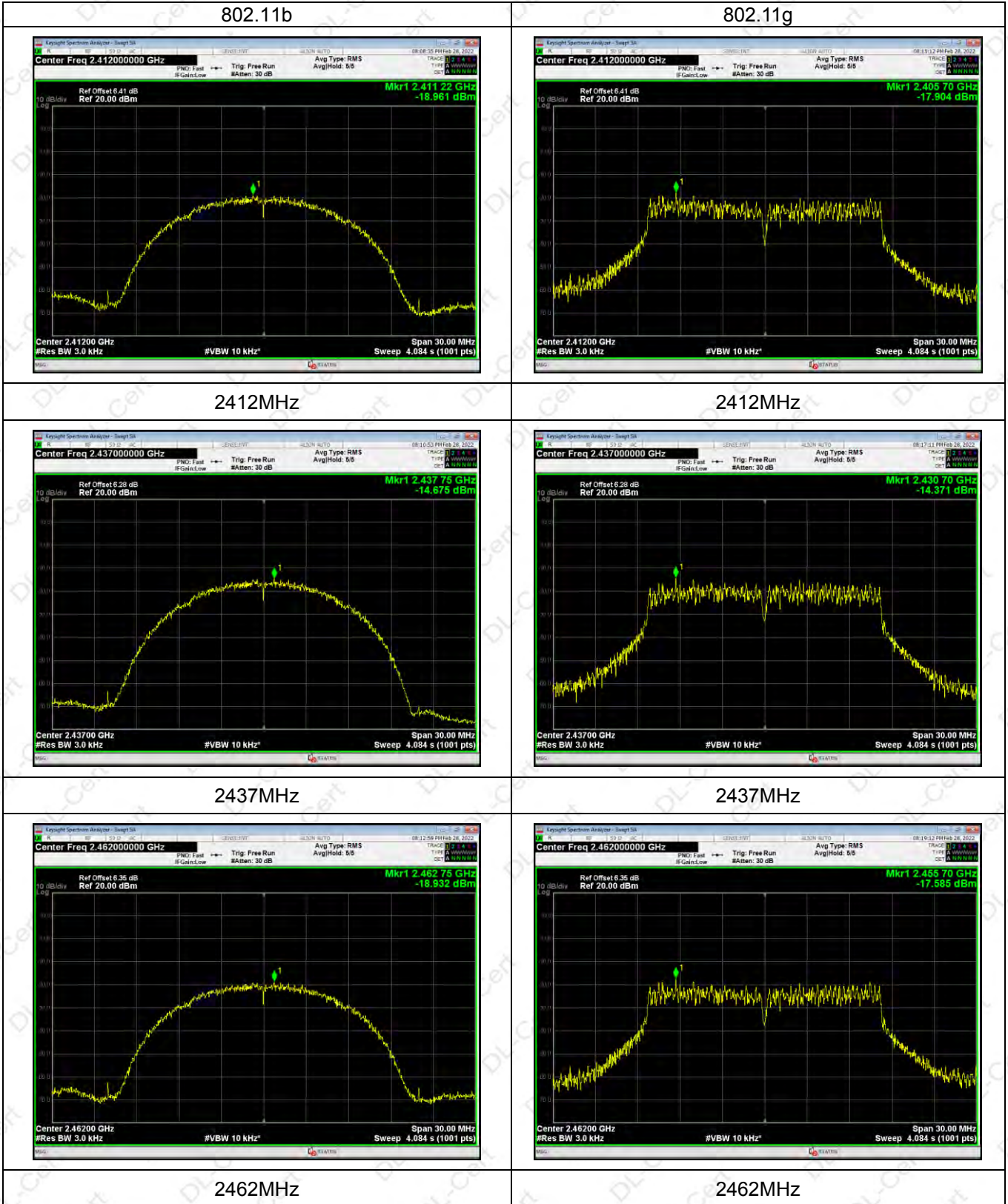


5.1.4 EUT OPERATION CONDITIONS

The EUT tested system was configured as the statements of 2.4 Unless otherwise a special operating condition is specified in the follows during the testing.

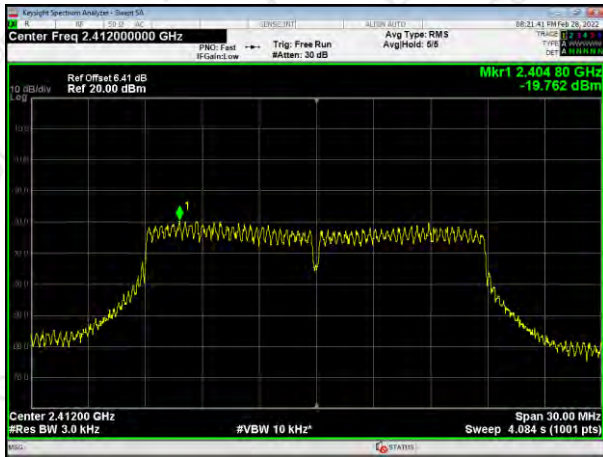
**5.1.5 TEST RESULTS**

Mode	Test Channel	Reading Level (dBm/100kHz)	Limit (dBm/3kHz)	Result
802.11b	Low	-18.961	8	PASS
	Moddle	-14.675	8	PASS
	High	-18.932	8	PASS
802.11g	Low	-17.904	8	PASS
	Moddle	-14.371	8	PASS
	High	-17.585	8	PASS
802.11n20	Low	-19.762	8	PASS
	Moddle	-15.571	8	PASS
	High	-20.445	8	PASS
802.11n40	Low	-20.263	8	PASS
	Moddle	-18.112	8	PASS
	High	-20.836	8	PASS





802.11n HT20



2412MHz

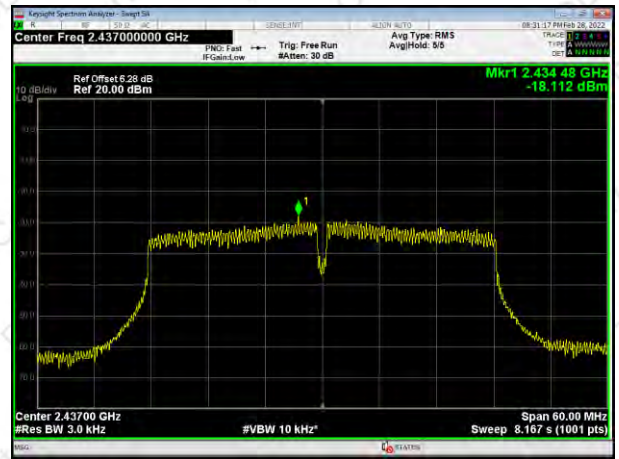
802.11n HT40



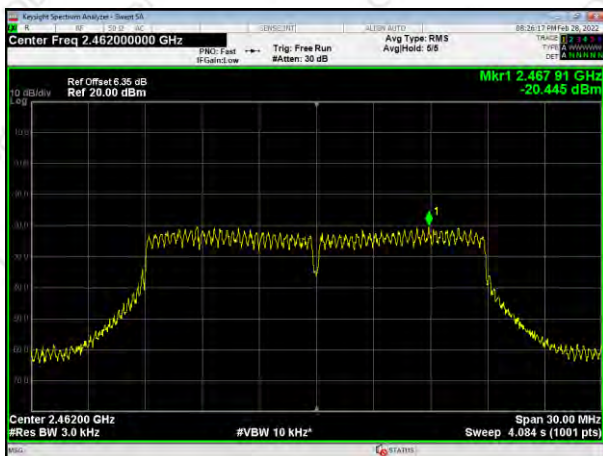
2422MHz



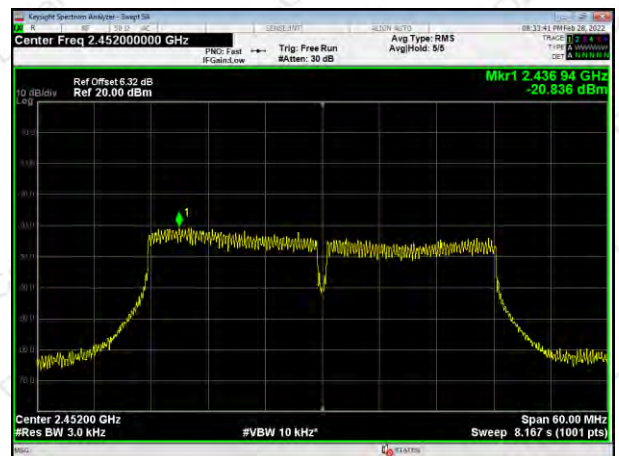
2437MHz



2437MHz



2462MHz



2452MHz



6. 6DB BANDWIDTH TEST

6.1 APPLIED PROCEDURES / LIMIT

FCC Part15 (15.247) , Subpart C				
Section	Test Item	Limit	Frequency Range(MHz)	Result
15.247(a)(2)	Bandwidth	$\geq 500\text{KHz}$ (6dB bandwidth)	2400-2483.5	PASS

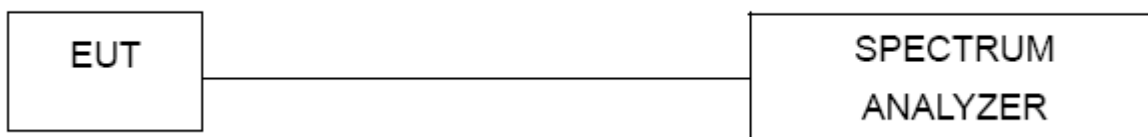
6.1.1 TEST PROCEDURE

1. Set RBW = 100 kHz.
2. Set the video bandwidth (VBW) \geq RBW.
3. Detector = Peak.
4. Trace mode = max hold.
5. Sweep = auto couple.
6. Allow the trace to stabilize.
7. Measure the maximum width of the emission that is constrained by the frequencies associated with the two outermost amplitude points (upper and lower frequencies) that are attenuated by 20 dB relative to the maximum level measured in the fundamental emission.

6.1.2 DEVIATION FROM STANDARD

No deviation.

6.1.3 TEST SETUP



6.1.4 EUT OPERATION CONDITIONS

The EUT tested system was configured as the statements of 2.3 Unless otherwise a special operating condition is specified in the follows during the testing.

**6.1.5 TEST RESULTS**

	Test Channel	6dB Bandwidth (MHz)	Limit (MHz)	Result
802.11b	Low	9.88	0.5	Pass
	Middle	9.09	0.5	Pass
	High	9.50	0.5	Pass
802.11g	Low	16.40	0.5	Pass
	Middle	16.10	0.5	Pass
	High	16.44	0.5	Pass
802.11n HT20	Low	16.30	0.5	Pass
	Middle	16.54	0.5	Pass
	High	17.56	0.5	Pass
802.11n HT40	Low	35.42	0.5	Pass
	Middle	34.99	0.5	Pass
	High	35.43	0.5	Pass



802.11b



802.11g



2412MHz



2412MHz



2437MHz



2437MHz



2462MHz

2462MHz



802.11n HT20



802.11n HT40



2412MHz



2422MHz



2437MHz



2437MHz



2462MHz

2452MHz



7. ANTENNA REQUIREMENT

7.1 STANDARD REQUIREMENT

15.203 requirement: For intentional device, according to 15.203: an intentional radiator shall be designed to ensure that no antenna other than that furnished by the responsible party shall be used with the device.

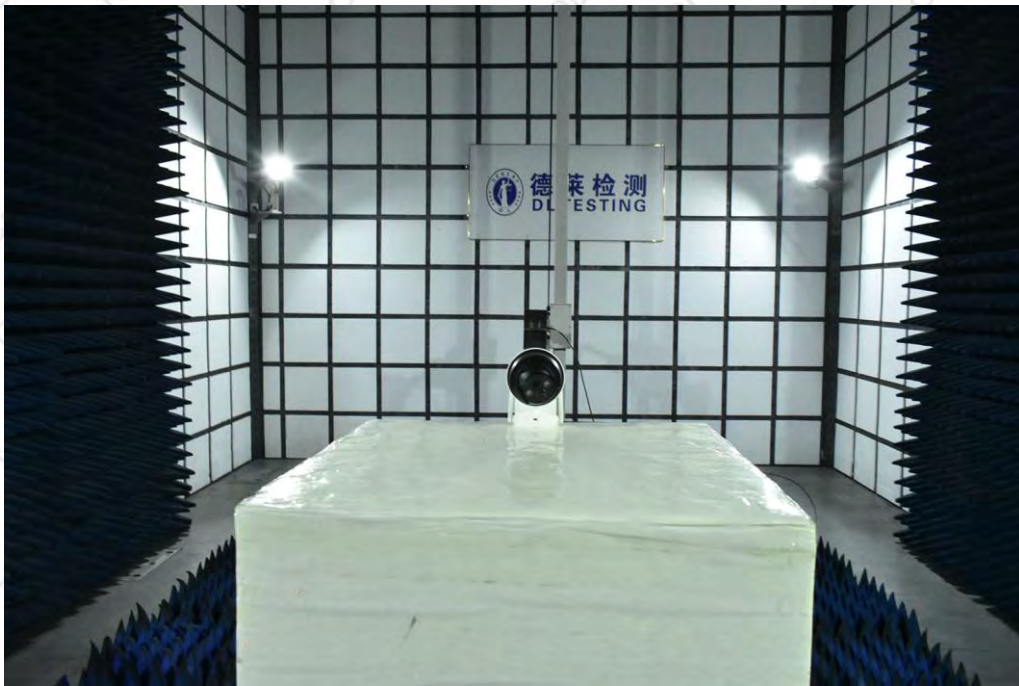
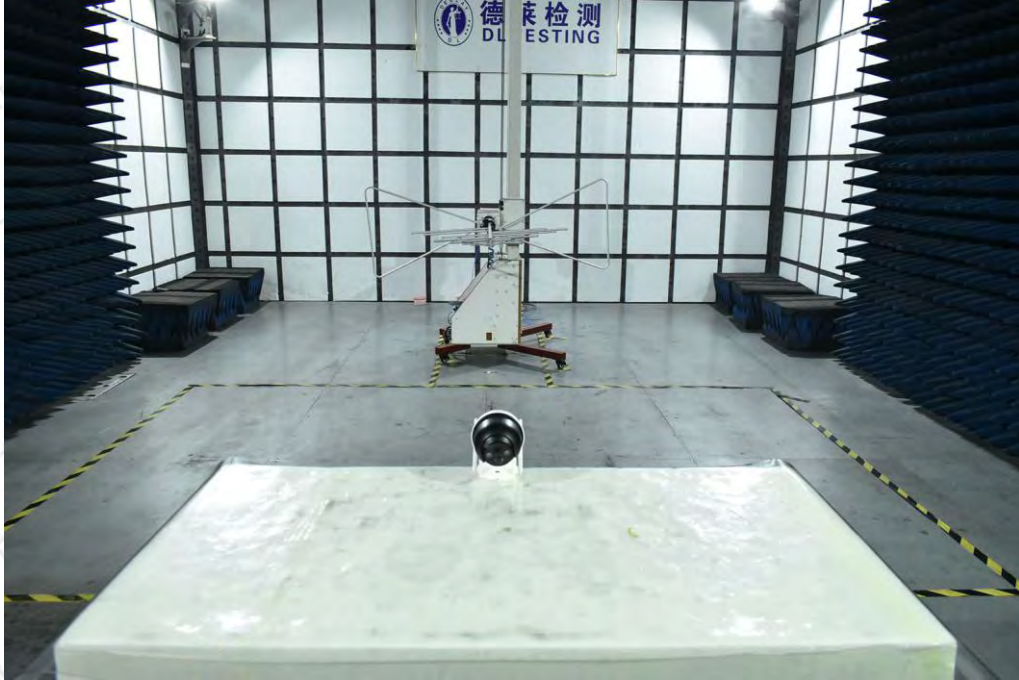
7.2 EUT ANTENNA

The EUT antenna is External antenna, It comply with the standard requirement.



8. TEST SEUUP PHOTO

Radiated Measurement Photos





Conducted Measurement Photos



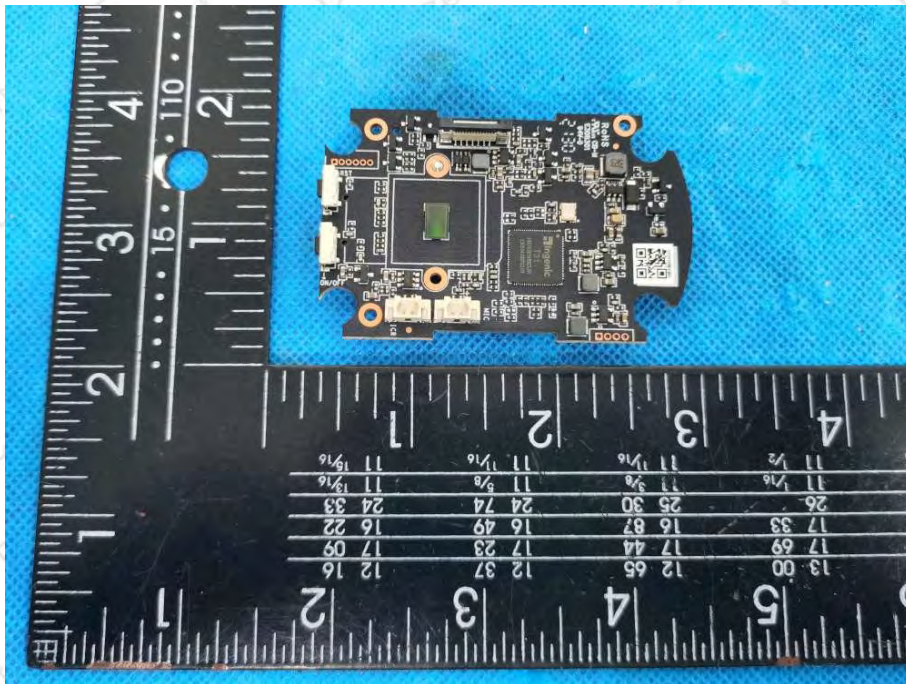
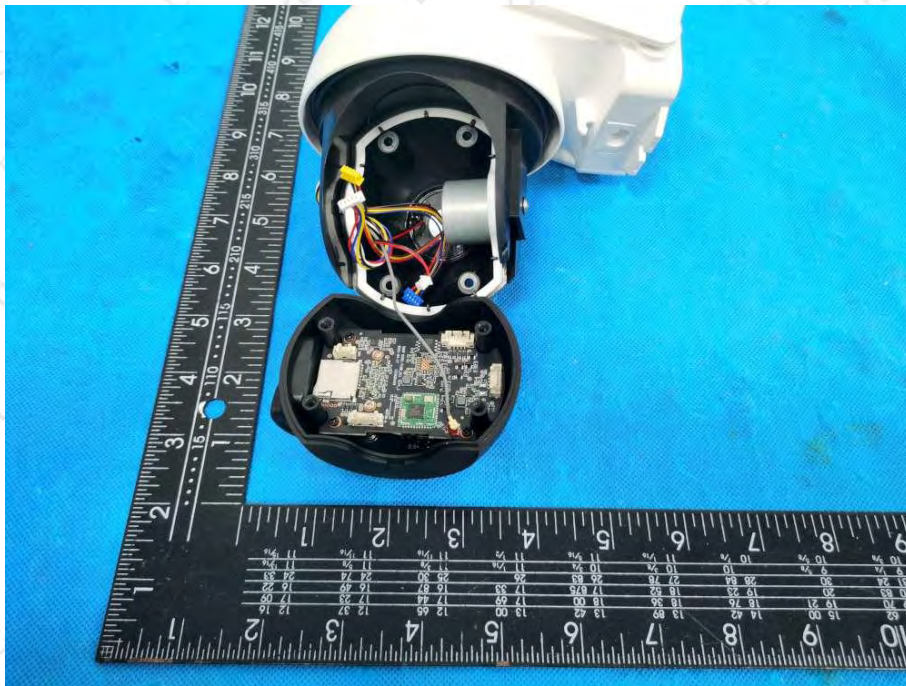
9. EUT PHOTO

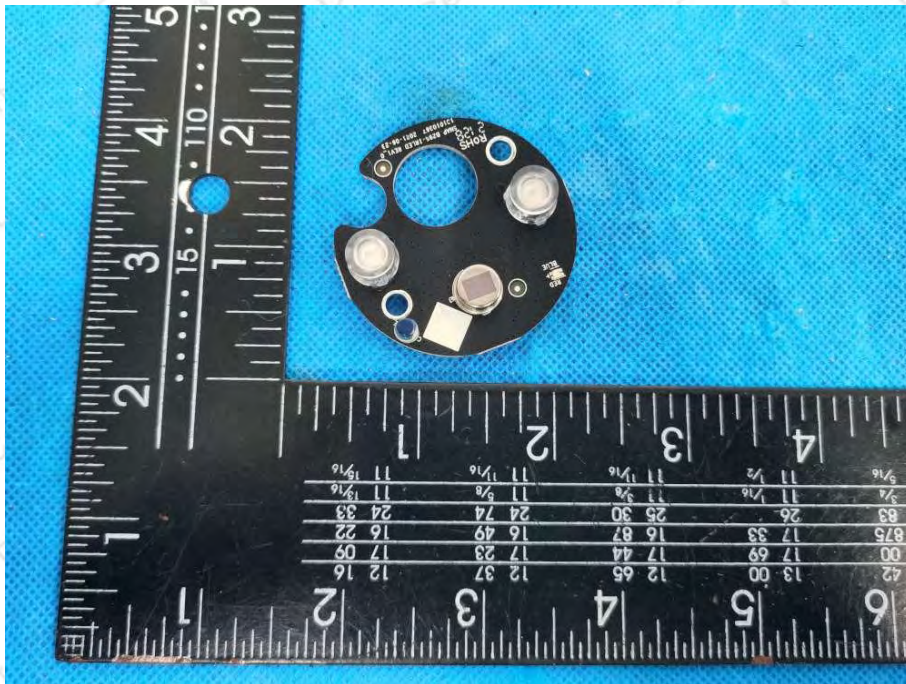
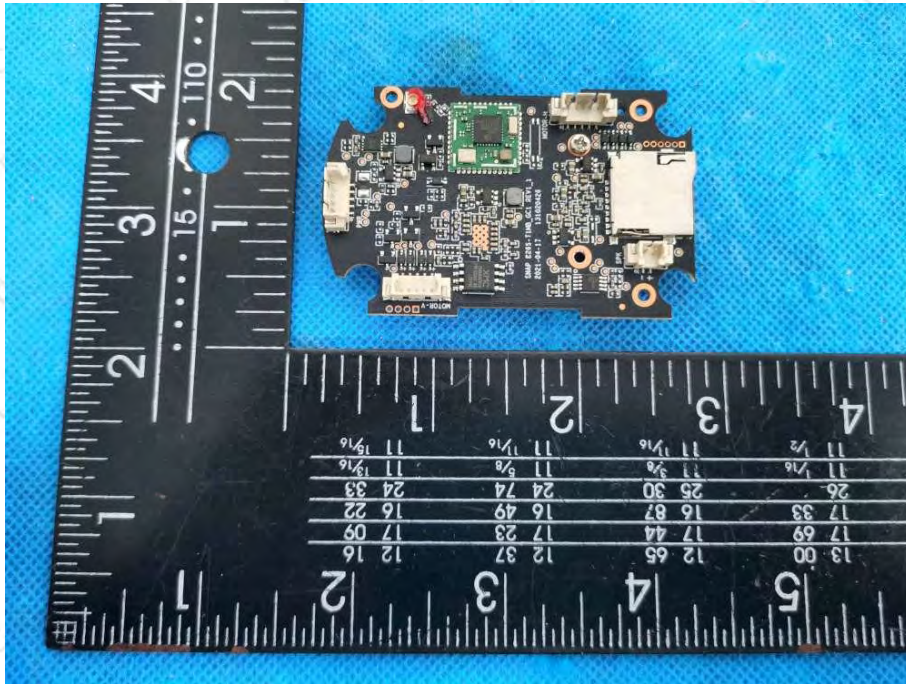


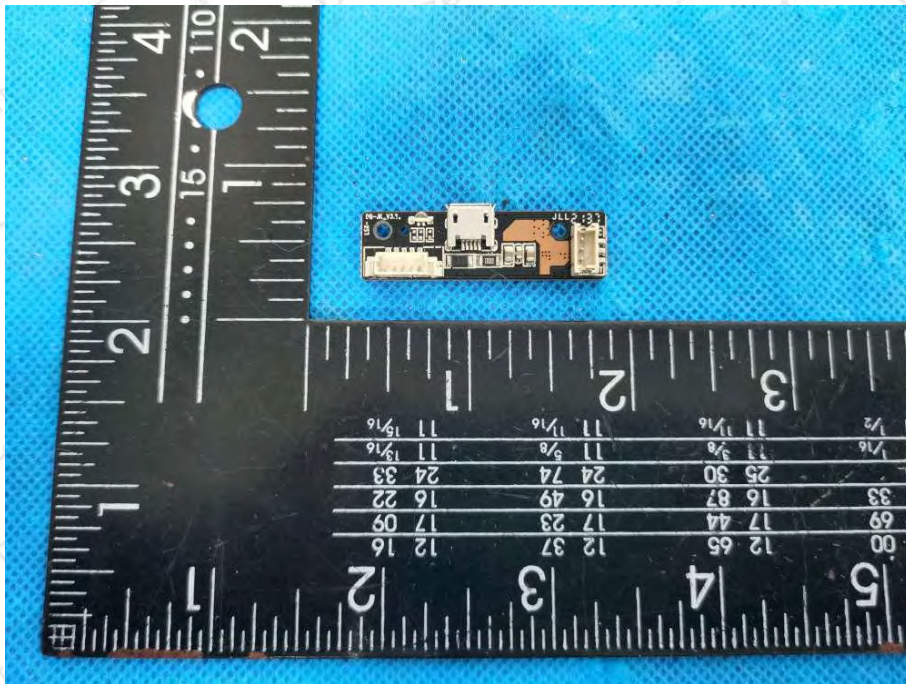
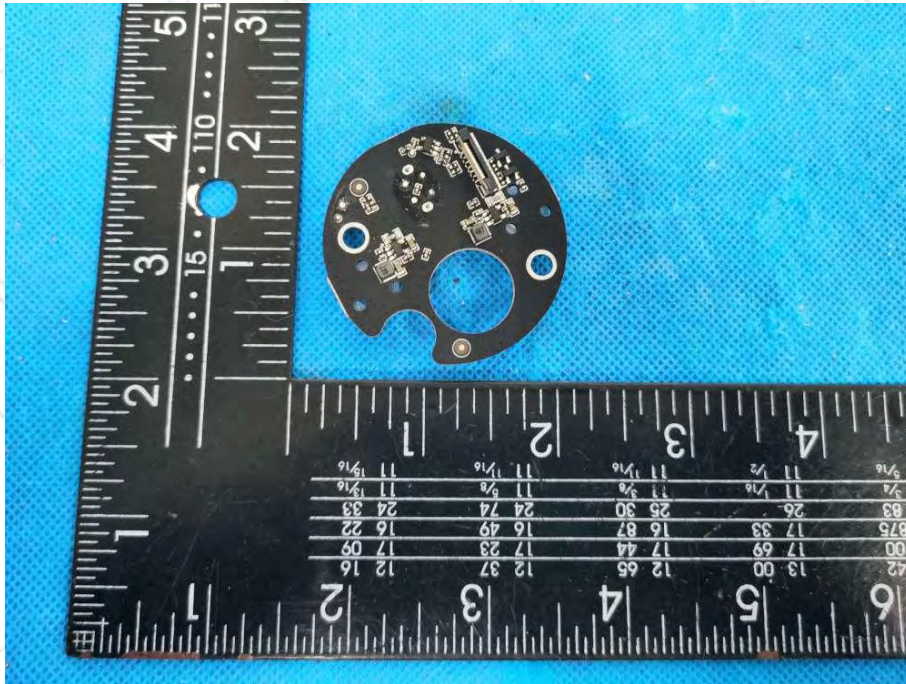


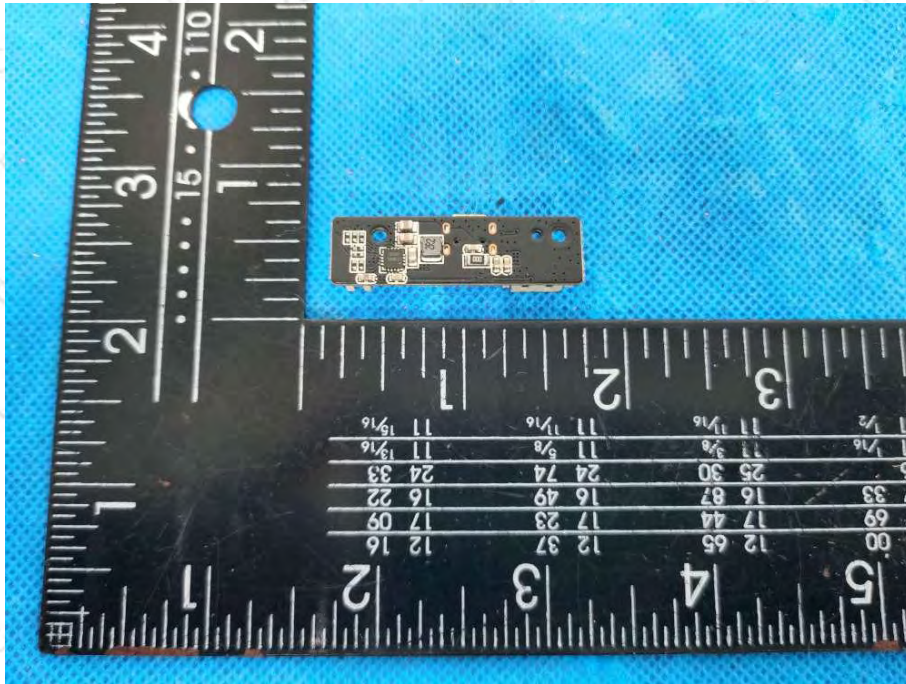


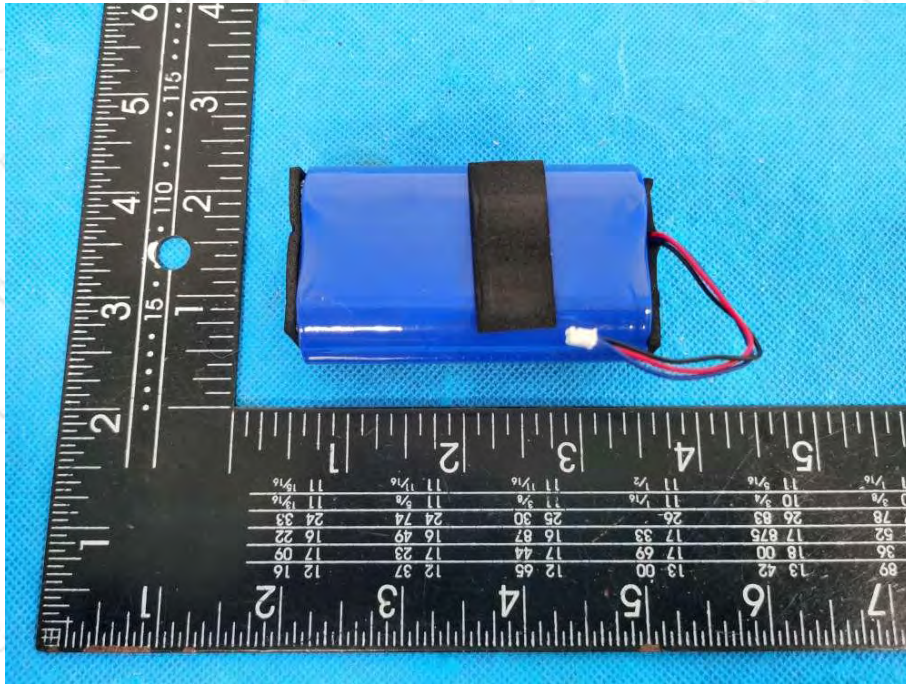












***** END OF REPORT *****