

Vehicle wireless backup camera system

Product Manual / Installation Instructions



*Please read this manual thoroughly before operating the device ,and
keep it for future reference .*

1. Certificate

The system were Certificated by: CE & FCC & EMC & RoHs & Waterproof



2. Package Includes:

- 1*Wireless camera
- 1* Wireless Monitor
- 1*Power Cords
- 1*Bracket for Monitor
- 1*Cigarette Lighter Adapter
- 1*Extension Cable
- 1*Antennas,Parts
- 1*Instructions

Main Accessories



3 . We recommend installing this system on Cars,Pickups, SUVs, Campers, Small RVs, Small Trucks, etc under 35 feet.

If only used for reversing, it can be installed on vehicle under 40 ft.

But the wireless system may have different performance when meeting different vehicles. If you meet any signal issue, please contact us as soon as possible.

Digital signals no interference

660 ft Wireless range open



**Compatible for Cars,Suvs,UTVs,Pickups,Trucks,
Motorhomes,Smaller RVs,Campers**

If your vehicle is too large or you meet signals issue, please contact us immediately ,we would solve it for you .

4 . PLEASE READING BELOW INFORMATION BEFORE INSTALLATION :

I . Please noted below data of power supply input to the monitor and camera.

Monitor: Voltage range 12V-24V

Camera: Voltage range 12V-24V

Note : To ensure the service life of the camera, please keep the voltage below 24V (the camera may be damaged after a period of use if not).

II. Please test the monitor and camera before installation .

After you receive the system, you must test the device before installation. Please reference the way below image showed.

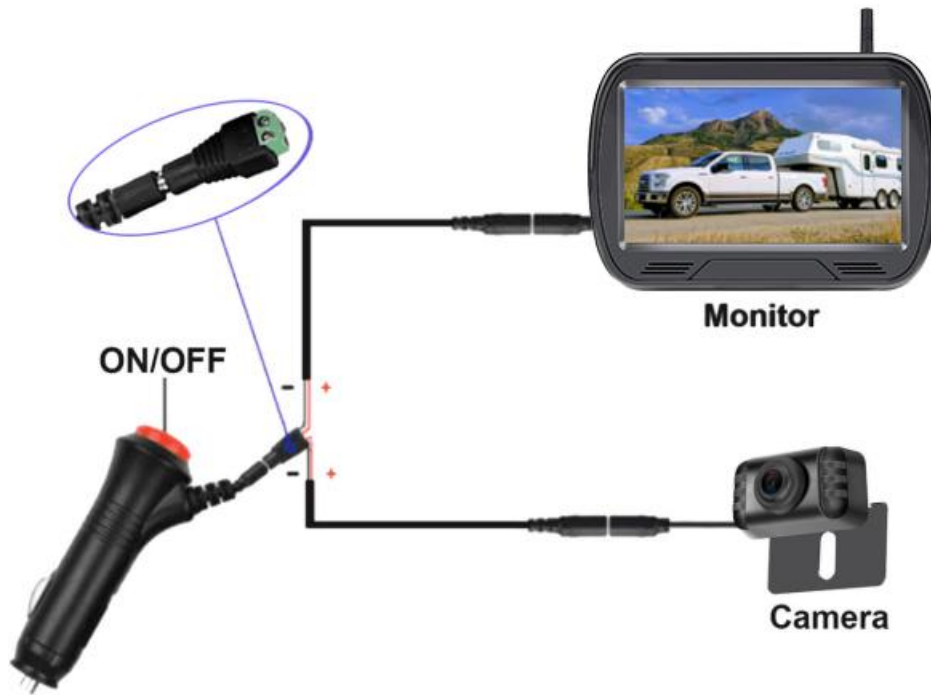
(1) Plug power cords to the monitor and merged the power wires to camera ,red-red, black-black.

(2) Loose the screws on green adapter, then insert the red wire(copper wire) to Positive(+) slot, and the black wire(copper wire) to Negative(-) slot.

(3) Plug to cigarette lighter and turn on the red switch. If you see image on monitor, it means the system works well.

After testing, you need to make sure that the image appears on screen,

Then you can mount the monitor.



5 . Installation Video and Signal Repairing .

I. Wires Connection

Please pay attention to the positive and negative poles of the wire. If the positive and negative poles are reversed, it may cause no picture. If the monitor is emitting smoke, please turn off the power immediately and contact customer support.

- (1) The monitor can be powered by a cigarette lighter.**
- (2) If you just need the system used for back-up, please connect the camera to back-up light/reverse light.**
- (3) If you want the system to work for continuous use, please connect the camera to reversing light/running light which is continuous on.**



Warm Tips :

If there is no image after you install :

(i) Please check connections of power source. (Check if the camera and monitor are powered on)

(ii) Or if you reverse the positive wire and negative wire are connected correctly. (For example: The backup light black is positive, green is negative ,please don't backward them.)

If you cannot verify which wire is positive, you can connect the black wire to ground (metal part on vehicle), then to test the positive wire, which will protect the camera.

(iii) The red clip may not be in good connection. Take it off and try it.

II . Please watch below video on YouTube to help you install the system.

<https://youtu.be/NPwhIiNFu4>

Scan the QR code through your cellphone browser, such as Google to get the video .



If you cannot open this link, it may be caused by the wrong type of software. So you can search the video ID: [NPwhIiNFu4](https://youtu.be/NPwhIiNFu4) on www.youtube.com

Please contact us with the Email, and we will provide you a link.

III . Signal pairing .(For second camera or no images on screen)

(The system signals be paired when you received, Need to pair signals between camera and monitor when you lost signals and never come back or you changed a new camera.If you have a good signals, please don't to pair the signals yourself, sincerely)

Pairing Steps:

Note: You don't need to pair signals if there are images on screen.

You only need to pair if no images or after you received a new second camera pair to the current monitor.

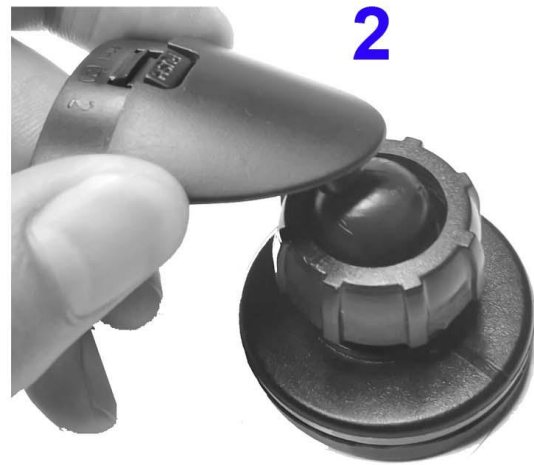
Step 1 : Make sure the camera and monitor are powered .

Step 2 : Presses the "Menu" button of the monitor into menu mode until the " Pair "appear on the monitor ,then press the "+" button to pair the signal .

Step 3 : Just wait for the image appearing .

6 . 5 Inch Monitor Details & Installation

I . The bracket of monitor could be installed with below 4 steps:



II . The monitor can be attached to the dash or windshield depends on your preference.



III . The buttons of the Monitor

1): +: Press to increase

2): Menu: Press this to enter the menu mode

3): -: Press to reduce



Note: The default is mirror image with CH1 for rear view, with image flip function you can switch to facing view(front view), or images

upside down(Vertical flip)

i.Function:

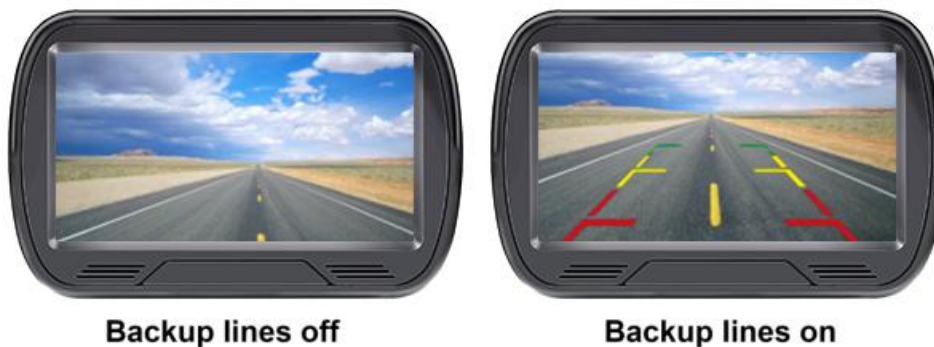
Single/Split Screen: The default is CAM1. Press the **+** key once to switch to CAM2, and press the **+** key twice switch to the split screen.

The Monitor Supports Two Channels



Guide Lines ON/OFF: The default guide line is on. Press the **-** key once to turn off.

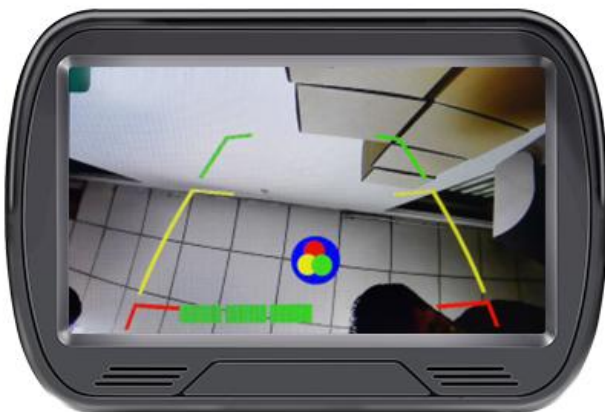
BACKUP LINES OPTIONS



ii.Press the menu key once, below picture appears. The brightness can be adjusted by press the **+** **or** **-** key



Press the menu key twice, below picture appears, and the saturation can be adjusted.



Press the [Menu](#) key three times, below picture appears, the contrast can be adjusted.



Press the menu key four times, below picture appears. The image can be flipped, normal image / mirror image.(Four forms) by press **+** and **-**



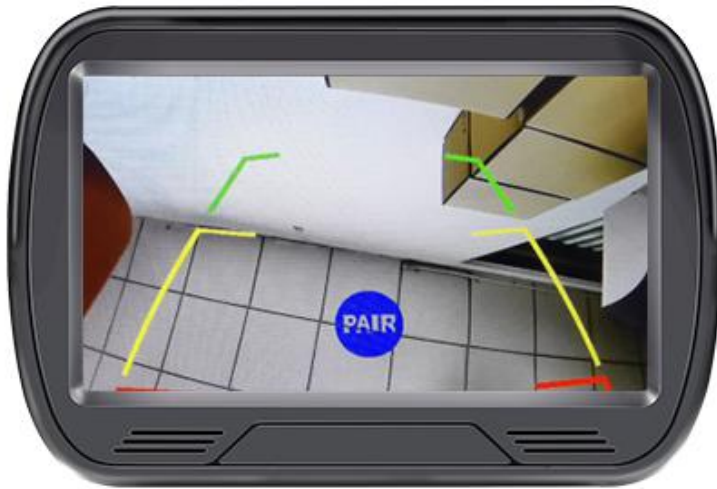
Press the menu key five times, below picture appears, the height and width of the guide line can be adjusted by press **+** and **-**



Press the menu key six times,below picture appears, and the guide lines can be moved left and right.



Press the menu key seven times,below picture appears with **Pair icon.**
Press the + key to Pair the signals (the signals paired before sent out,you don't need to pair it again, you only need to pair if there is no images on screen after powered on.)



7 . Backup/Front View Camera Details & Installation

I . Antenna is Waterproof .

You can put the antenna outside or inside the vehicle, it will not be affected by the water or rain.

But please fix it on a proper position will make the signal transmission powerful, If your vehicle is large, please make the antenna on the good position.



II . The camera is made of waterproof material IP69

Waterproof



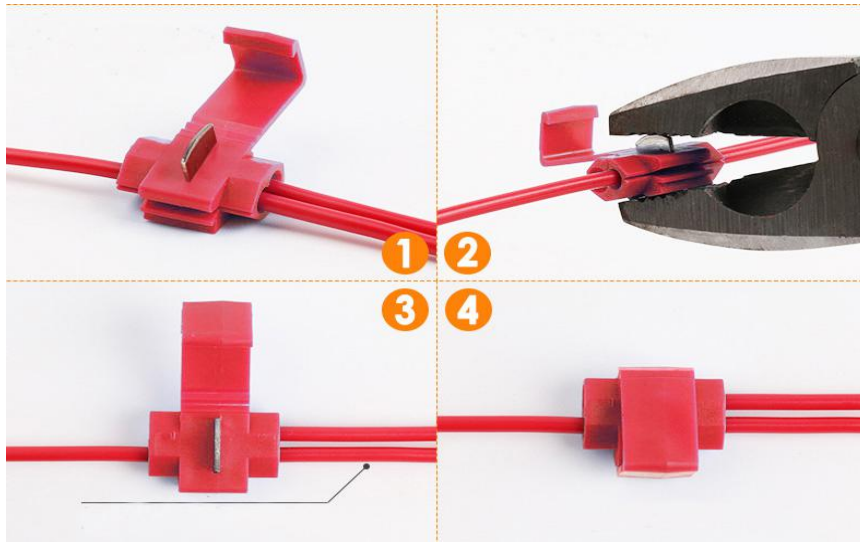
III . Camera Installation

The bracket of the camera can be hidden behind the license plate or on the front.



IV . The T-taps are used for protecting the cord of the reversing back-up light or taillight. Just refer to the below picture, which makes the installation easier.

(Note:The color of T-Taps maybe not same as shown)



V Remember to remove the protective film of lens. As for the protective film on screen, you can choose to remove or not

8. Two years quality warranty and life time tech support .Just contact us if any issues you meet.



9 . Don't forget to contact us get your second backup camera and monitor system kit if you or your families need it .

Thank you !

Troubleshooting

1 After installation, you turn on the monitor and camera power without images, at the same time, the monitor turns on for five seconds and then goes black, which means something wrong with the camera. You need to check that the camera is plugged in correctly. If the camera's power cord is not connected correctly to the headlights, there is no images. Or you can touch the camera with your hand, if the camera gets hot, it's powered on; if the camera surface temperature does not change, it is not connected to the power. Then, you need to reconnect to the power.

2 If your car is a BMW, Benz, or VW brand car, you will find the image flashing all the time after you install this system. Because BMW, Benz, VW's cars repel foreign devices and emit interfering currents. You need to add a relay or filter between the camera and the lamp circuit to form a rated dc power supply.

When you turn off the engine and keep the key in ACC, if the image does not flicker and the image starts to flicker after starting the

engine, you can be sure that you need to add relay or filter to keep signal stable.

3 If you connect the camera to the headlights, and your headlights are LED, it will not work. Because the LED light cannot provide a constant direct current to the camera, you need to switch to another power source to power the camera.

4 If you meet any problem in the process of operating the product, you can contact us for solution.

5 Any problems you met contact us (if you contact amazon,they cannot answer you any questions about technology, we can provide tech support,please contact us only)

FCC WARNING

This device complies with part 15 of the FCC Rules. Operation is subject to the following two conditions: (1) this device may not cause harmful interference, and (2) this device must accept any interference received, including interference that may cause undesired operation.

Any changes or modifications not expressly approved by the party responsible for compliance could void the user's authority to operate the equipment.

NOTE: This equipment has been tested and found to comply with the limits for a Class B digital device, pursuant to Part 15 of the FCC Rules. These limits are designed to provide reasonable protection against harmful interference in a residential installation. This equipment generates, uses and can radiate radio frequency energy and, if not installed and used in accordance with the instructions, may cause harmful interference to radio communications. However, there is no guarantee that interference will not occur in a particular installation.

If this equipment does cause harmful interference to radio or television reception, which can be determined by turning the equipment off and on, the user is encouraged to try to correct the interference by one or more of the following measures:

- Reorient or relocate the receiving antenna.
- Increase the separation between the equipment and receiver.
- Connect the equipment into an outlet on a circuit different from that to which the receiver is connected.
- Consult the dealer or an experienced radio/TV technician for help.

To maintain compliance with FCC's RF Exposure guidelines, This equipment should be installed and operated with minimum distance between 20cm the radiator your body: Use only the supplied antenna.