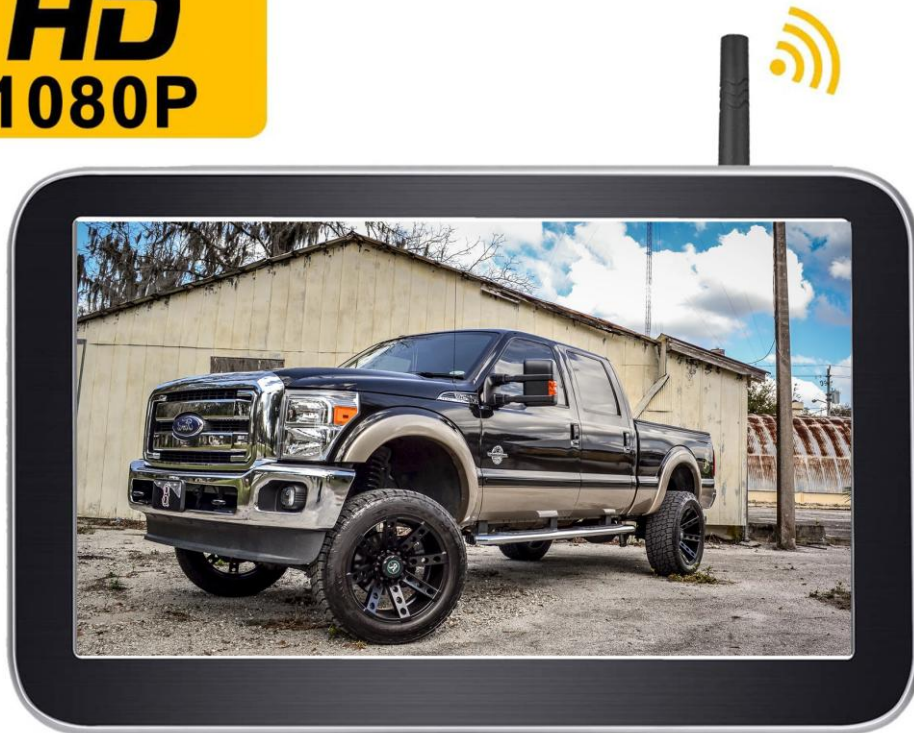


HD Digital Wireless Backup Camera & Monitor Kit

Product Manual / Installation Instructions

HD
1080P



**Please read this manual thoroughly before operating the device ,and
keep it for future reference .**

1. Certificate

The system were Certificated by: CE & FCC & EMC & RoHs & Waterproof



2. Package Includes:

1*Wireless camera 1* Wireless Monitor 1*Power Cords
1*Bracket for Monitor 1*Cigarette Lighter Adapter
1*Extension Cable Parts,1*Instructions 1*Antennas,



3. Working range

We recommend installing this system on Cars, Pickups, SUVs, Campers, Small RVs, Small Trucks, etc under 33 feet. If only used for reversing, it can be installed on vehicle under 40 ft.

But the wireless system may have different performance when meeting different vehicles. If you meet any signal issue, please contact us as soon as possible.



4. BEFORE INSTALLATION, PLEASE READING

I . Please noted below data of power supply input to the monitor and camera.

Monitor: Voltage range 9V-35V

Camera: Voltage range 9V-24V

Note: If the power over 24V to camera, it will cause the damage.

Recommend is DC 12V to monitor and camera.

II. Please test the monitor and camera before installation .

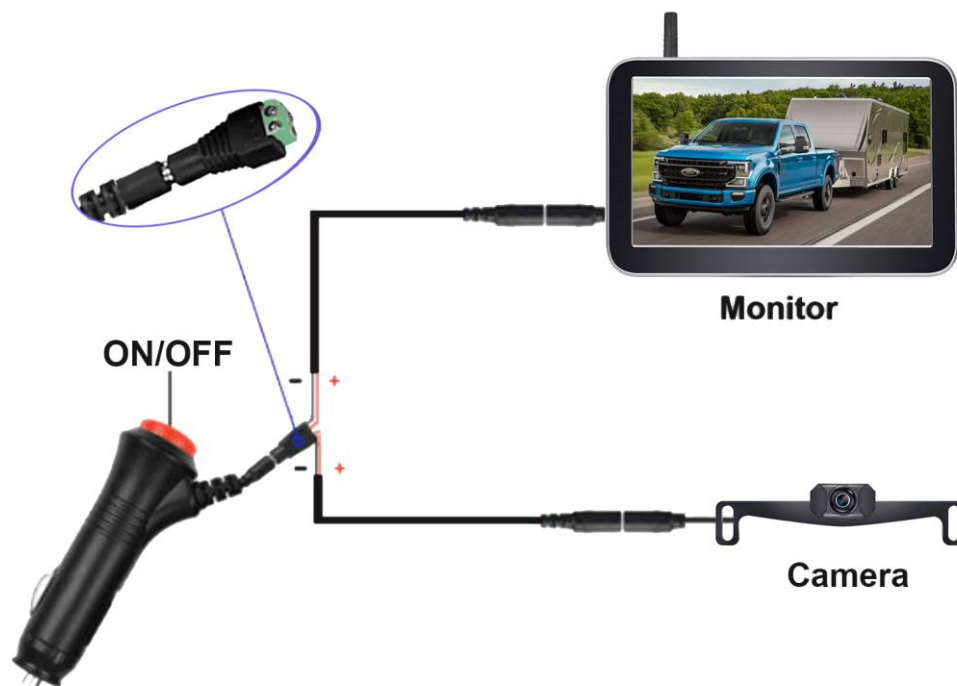
After you receive the system, you must test the device before installation. Please reference the way below image showed.

(1) Plug power cords to the monitor and merged the power wires to camera ,red-red, black-black.

(2) Loose the screws on green adapter, then insert the red wire(copper wire) to Positive(+) slot, and the black wire(copper wire) to Negative(-) slot.

(3) Plug to cigarette lighter and turn on the red switch. If you see image on monitor, it means the system works well.

After testing, you need to make sure that the image appears on screen, Then you can mount the monitor.



5. Installation Video and Signal Repairing

I. Please watch below video on YouTube to help you install the system.

<https://youtu.be/tumtLSV-qZU>

If you cannot open this link, it may be caused by the wrong type of software. So you can search the video ID: [tumtLSV-qZU](https://youtu.be/tumtLSV-qZU) on www.youtube.com

If you don't find it, please contact us with the Email, we will provide you a link.

II. Signal pairing .(For second camera or no images on screen)

(The system signals be paired when you received, just need to pair signals between camera and monitor when lost signals and never come back or you changed a new camera.If you have a good signals, please don't pair the signals yourself, sincerely)

Pairing Steps:

Note: You don't need to pair signals if there are images on screen.

You only need to pair if no images or after you received a new second camera pair to the current monitor.

Step 1 : Make sure the camera and monitor are powered .

Step 2 : Press the "Menu" button of the monitor into menu mode until the " Pair " icon appear on the monitor ,then click the "up"

button to pair the signal .

Step 3 : Just wait for the image appearing .

7. Wires Connection

Please pay attention to the positive and negative poles of the wire. If the positive and negative poles are reversed, it may cause no picture. If the monitor is emitting smoke, please turn off the power immediately and contact customer support.

- (1) The monitor can be powered by a cigarette lighter.
- (2) If you just need the system used for back-up, please connect the camera to back-up light/reverse light.
- (3) If you want the system to work for continuous use, please connect the camera to reversing light/running light which is continuous on.



8. Warm Tips :

If there is no image after you install :

- 1) Please check connections of power source. (Check if the camera and monitor are powered on)
- 2) Check if you reverse the positive wire and negative wire (For example: The backup light black is positive, green is negative ,please don't backward them.)
- 3) If you cannot identify which wire is positive, you can connect the black wire to ground (metal part on vehicle), then to test the positive wire, which will protect the camera.
- 4) The red clip may not be in good connection. Take it off and try it.

9. 7 Inch Monitor Details & Installation

I . The bracket of monitor should be installed with below 4 steps:



II . The monitor can be attached to the dash or windshield depends on your preference. (As for the protective film on screen, you can choose to remove or not protective film)



10. The Keys on the back of Monitor



- 1) AV : Press to switch channel
- 2) UP: Press to increase
- 3) Menu: Press to adjust Brightness,Saturation,Contrast, Flip image, Guide lines
- 4) Down: Press to reduce or Guide Lines on/Off
- 5)Power: Turn on/off the monitor

Note: The default is mirror image with CH1 for rear view,with image flip function you can switch to facing view(front view),or images upside down(Vertical flip)

11. Features

Full/Split Screen: The default is CAM1 channel. Click the **AV** key switch to CAM2 channel, and Click the **AV** key again switch to the split screen.

The Monitor Supports Two Channels



CAM 1 Screen



CAM2 Screen



Split Screen

Guide Lines ON/OFF: Click the **Down** key to turn on or off.

BACKUP LINES OPTIONS

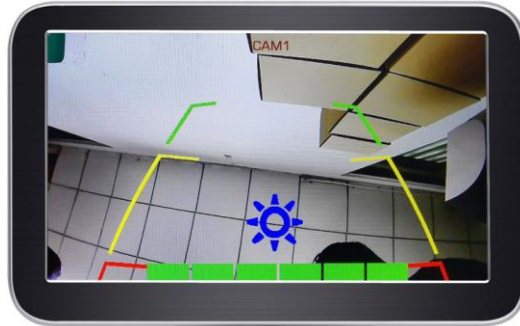


Backup lines off

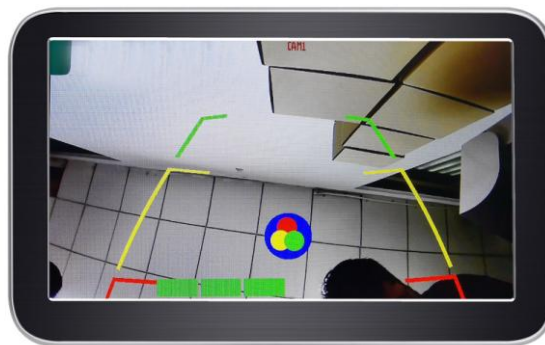


Backup lines on

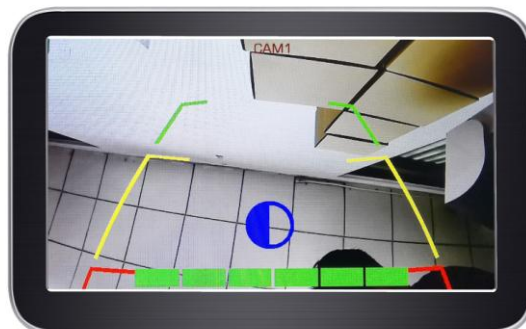
Click the menu key, below icon appears. The **brightness** can be adjusted by click the **up or down** key



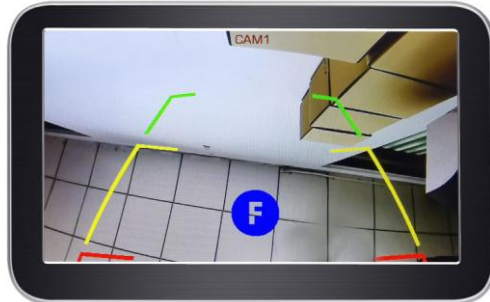
Click the menu key , when the below icon appears, and the saturation can be adjusted by click the **up and down** key.



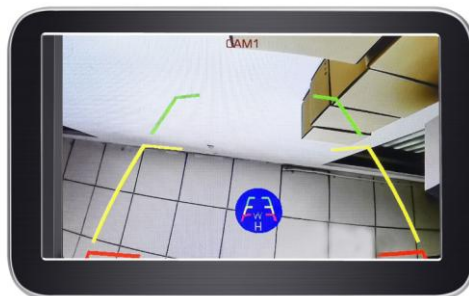
Click the **Menu** key, when below icon appears, the contrast can be adjusted by click **up and down** key



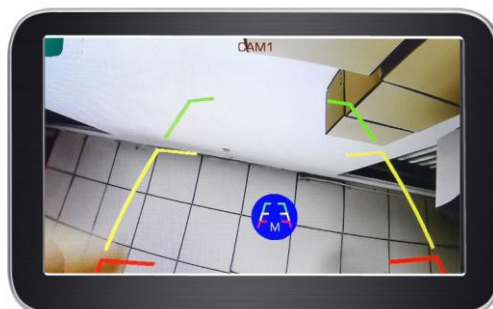
Clicks the menu key,when below icon appears. The image can be flipped, normal image / mirror image.(Four forms) by click **up** and **down**



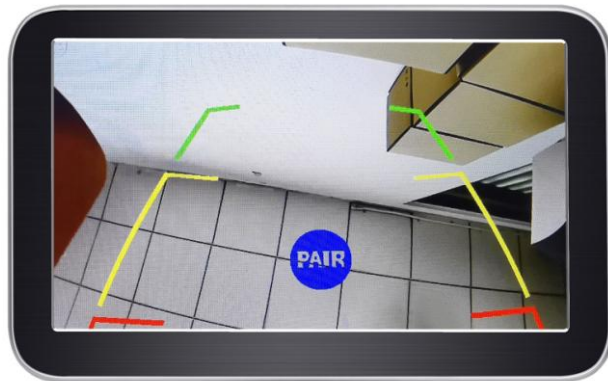
Click the menu key ,when below icon appears, the height and width of the guide line can be adjusted by Click **up** and **down**



Click the menu key ,when below icon appears, by click the up and down key, the guide lines can be moved to left or right.



Click the menu key,when below icon appears. And then click the **Up** key to enter pairing. (The signals already got paired before we sent it,you don't need to pair it again, you only need to pair if there is no images on screen after powered on or you got a new camera)



12. The camera is made of **waterproof** material IP69

Waterproof



13. Camera Installation

The camera was fixed by the original screws on the license plate, no need drill more holes to hook up the camera, easy to install. The camera lens could be rotated 90 degree upside down, you can loose the screws on the back of camera.



14. T-Taps:

We have prepared a T-Taps adapter to better protect the cord of the reversing back-up light or tail light, please reference the picture below, which makes the installation easier.

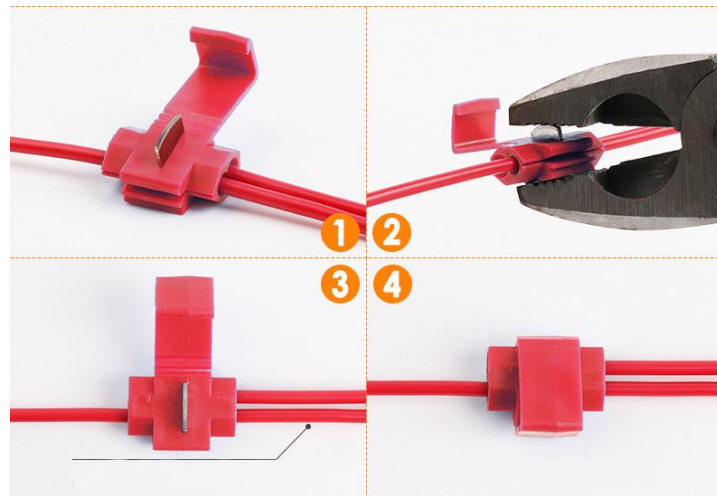
Step1-step4:

Step1: Plug the power cord of the reversing lamp into the first hole of the clamp.

Step2: Put the backing auxiliary wire into the second hole of the clamp (the hole is blocked to prevent leakage)

Step3: Clamp the adapter, and clamp the iron sheet to the bottom.

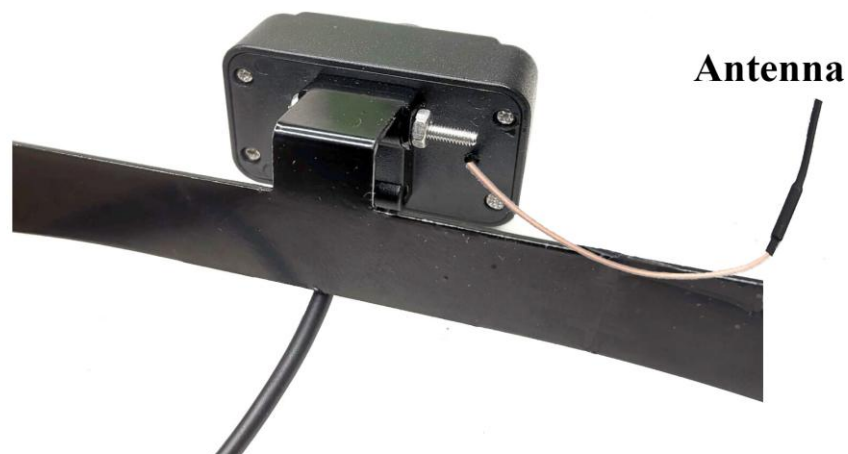
Step4: The step is finished.



15. Antenna

There is a thin wire which comes from the camera, seen below image.

The antenna is waterproof which can be put outside or inside on the vehicle, and it will not be affected by the water or rain. But please fix it on a proper position, which can make the signals transmission powerful. If your vehicle is large, please make the antenna on the good position.



16. Customer Service

Two years quality warranty and life time tech support .Just contact us if any issues you meet.

Thank you !



Troubleshooting

1 After installation, you turn on the monitor and camera power without images, at the same time, the monitor turns on for five seconds and then goes black, which means something wrong with the camera. You need to check that the camera is plugged in correctly. If the camera's power cord is not connected correctly to the headlights, there is no images. Or you can touch the camera with your hand, if the camera gets hot, it's powered on; if the camera surface temperature does not change, it is not connected to the power. Then, you need to reconnect to the power.

2 If your car is a BMW, Benz, or VW brand car, you will find the image flashing all the time after you install this system. Because BMW, Benz, VW's cars repel foreign devices and emit interfering currents. You need to add a relay or filter between the camera and the lamp circuit to form a rated dc power supply.

When you turn off the engine and keep the key in ACC, if the image does not flicker and the image starts to flicker after starting the engine, you can be sure that you need to add relay or filter to keep signal stable.

3 If you connect the camera to the headlights, and your headlights are LED, it will not work. Because the LED light cannot provide a constant direct current to the camera, you need to switch to another power source to power the camera.

4 If you meet any problem in the process of operating the product, you can contact us for solution.

5 Any problems you met contact us (if you contact amazon, they cannot answer you any questions about technology, we can provide tech support, please contact us only)

FCC WARNING

This device complies with part 15 of the FCC Rules. Operation is subject to the following two conditions: (1) this device may not cause harmful interference, and (2) this device must accept any interference received, including interference that may cause undesired operation.

Any changes or modifications not expressly approved by the party responsible for compliance could void the user's authority to operate the equipment.

NOTE: This equipment has been tested and found to comply with the limits for a Class B digital device, pursuant to Part 15 of the FCC Rules. These limits are designed to provide reasonable protection against harmful interference in a residential installation. This equipment generates, uses and can radiate radio frequency energy and, if not installed and used in accordance with the instructions, may cause harmful interference to radio communications.

However, there is no guarantee that interference will not occur in a particular installation.

If this equipment does cause harmful interference to radio or television reception, which can be determined by turning the equipment off and on, the user is encouraged to try to correct the interference by one or more of the following measures:

- Reorient or relocate the receiving antenna.
- Increase the separation between the equipment and receiver.
- Connect the equipment into an outlet on a circuit different from that to which the receiver is connected.
- Consult the dealer or an experienced radio/TV technician for help.

To maintain compliance with FCC's RF Exposure guidelines, This equipment should be installed and operated with minimum distance between 20cm the radiator your body: Use only the supplied antenna.