

尺寸: 10*10cm
双面印刷, 折叠

Specifications

CPU	Intel® Processor N3450
GPU	Intel® HD Graphics 500
Memory	8GB LPDDR4
Storage	128GB / 256GB SSD
Ethernet	100M/1000M Gigabit Ethernet
Wireless	WiFi / Bluetooth
Operating System	Windows 10
Connectivity	USB 3.0 / USB 2.0 / TF Card Slot / 2.5" SATA HDD/SSD (Optional)

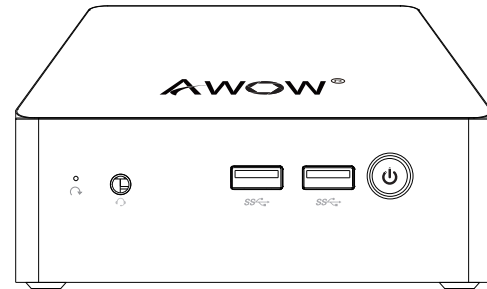


Mini PC

Model: AL34

Customer Service

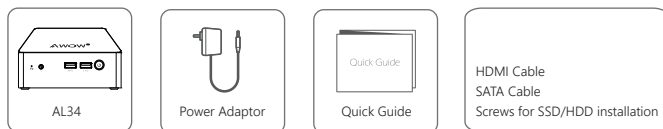
www.awowtech.com
support@awowtech.com



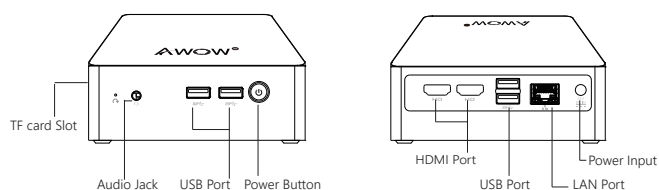
MINI PC

AL34 | Quick Guide

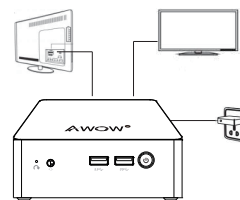
Packing



Port Layout



Connection

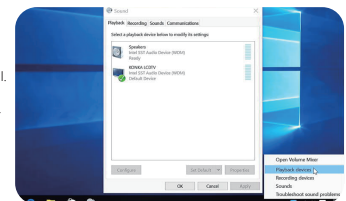


1. Turn on the TV or Monitor
2. Connect the Mini PC to the HDMI connector of the TV or monitor with HDMI cable
3. Connect the power adaptor into the wall socket, and the other end into the power input port of Mini PC
4. Push the power button, then the device starts

Configuring audio output via an HDMI device or Audio digital devices

Follow the steps below to enable audio output when connecting the mini PC to a TV or audio digital devices via HDMI or 3.5mm audio jack.

1. Access the Sound settings via the System Control Panel.
2. Under Playback devices, click the display device that corresponds with your HDMI audiocompatible display.
3. Click the Set Default button in the lower right hand corner.
4. Click OK to exit the setup.



Offline account setting

If you want to use local account instead of Microsoft account to log in the computer, please do not connect the internet during your first setting up.

This device complies with Part 15 of the FCC Rules. Operation is subject to the following two conditions: (1) this device may not cause harmful interference, and (2) this device must accept any interference received, including interference that may cause undesired operation

NOTE: This equipment has been tested and found to comply with the limits for a Class B digital device, pursuant to Part 15 of the FCC Rules. These limits are designed to provide reasonable protection against harmful interference in a residential installation. This equipment generates, uses and can radiate radio frequency energy and, if not installed and used in accordance with the instructions, may cause harmful interference to radio communications. However, there is no guarantee that interference will not occur in a particular installation.

If this equipment does cause harmful interference to radio or television reception, which can be determined by turning the equipment off and on, the user is encouraged to try to correct the interference by one or more of the following measures:

- Reorient or relocate the receiving antenna.
- Increase the separation between the equipment and receiver.
- Connect the equipment into an outlet on a circuit different from that to which the receiver is connected.
- Consult the dealer or an experienced radio/TV technician for help.

Warning: changes or modifications not expressly approved by the party responsible for compliance could void the user's authority to operate the equipment

Radiation Exposure Statement

This equipment complies with FCC radiation exposure limits set forth for an uncontrolled environment.

This equipment should be installed and operated with minimum distance 20cm between the radiator and your body.