

# 主天线规格书

Main antenna

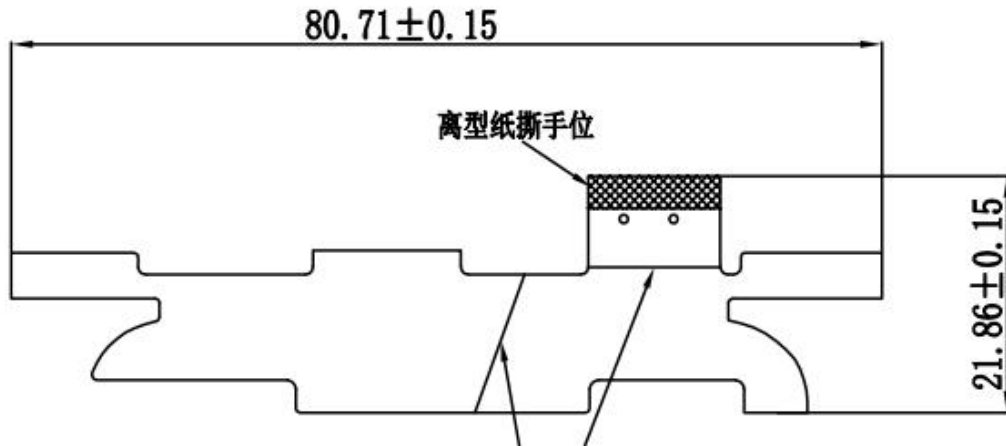
基本信息

## General information specification

制造商 Manufacturer	Shenzhen be-comfortable Technology Co. Ltd.
地址 Address	No.1606,Build C6,HengFeng industrial city,xixiang street, baoan district,Shenzhen.
天线型号 Model Name	P1311-main ant
日期 Date	2023-10-19
版本Version	1.0

天线外观

## Antenna Appearance



技术规格

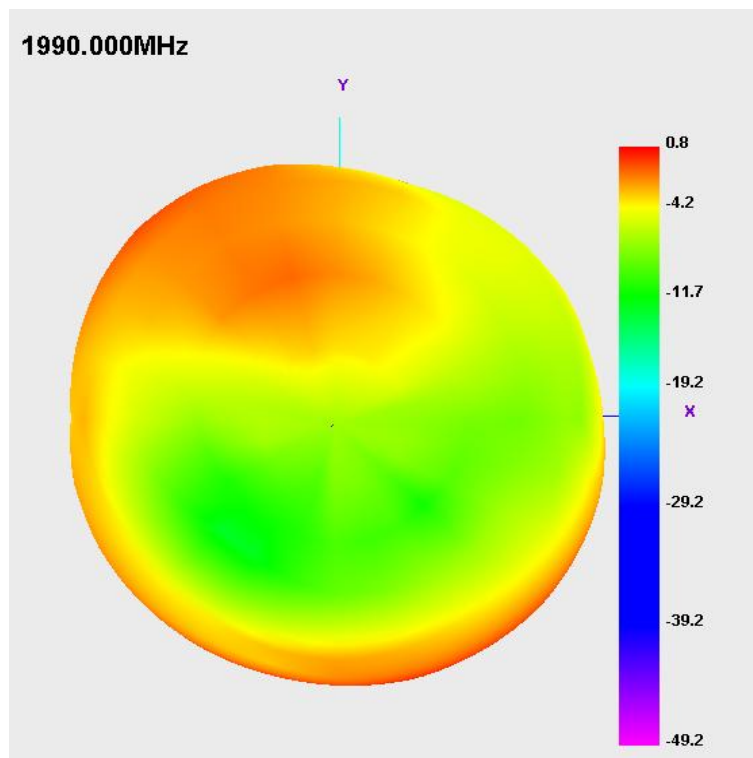
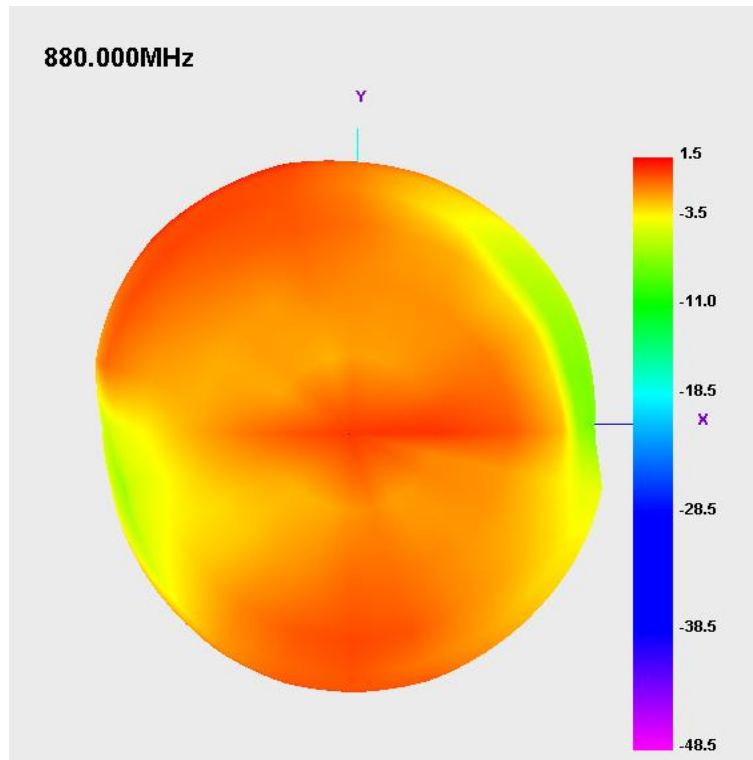
## Technical Specifications

频率范围 Frequency Range	700MHZ-960MHZ+1710MHZ-2690MHZ
天线类型 Antenna Type	PIFA
尺寸 Dimensions	80.71mm*21.86mm*0.12mm
阻抗 Impedance	50 ohm
最大增益 Maximum Gain	2dbi
驻波比 VSWR	$\leq 3$
.....	.....

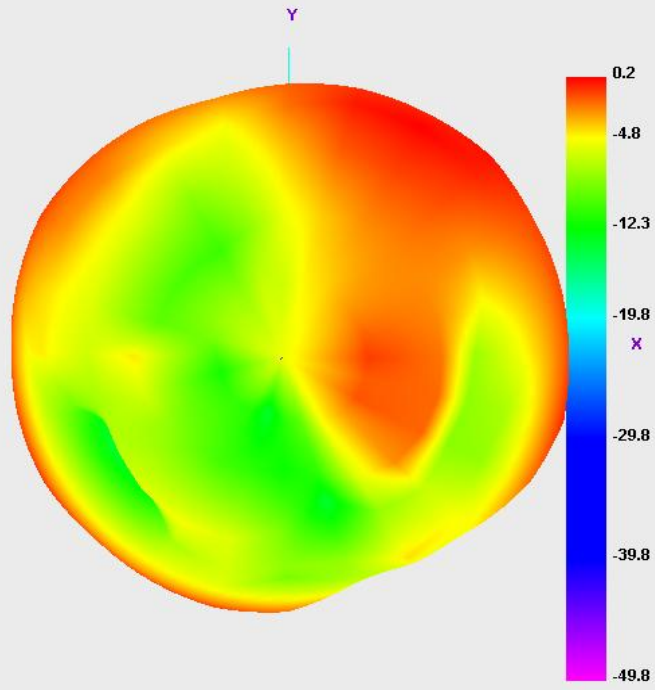
Efficiency and gain

Frequency (MHz)	Efficiency(%)	Gain (dB)	Frequency (MHz)	Efficiency(%)	Gain (dB)
700	14.10	-3.56	1710	31.42	-0.96
720	17.43	-2.59	1750	33.68	-0.87
740	23.11	-1.61	1790	34.52	-0.72
760	31.15	-0.48	1830	33.27	-1.16
780	36.82	0.37	1870	34.16	-1.18
800	40.52	0.84	1910	34.64	-1.18
820	43.53	0.82	1950	36.53	-0.79
840	49.98	1.38	1990	46.27	0.81
860	49.53	1.63	2030	44.80	0.28
880	50.30	1.46	2070	45.09	0.41
900	48.58	1.20	2110	46.02	0.45
920	43.56	0.90	2150	47.06	0.50
940	40.72	0.43	2170	47.96	0.43
960	32.60	-0.49	2290	50.87	0.90
			2330	49.05	1.07
			2370	44.39	1.37
			2410	43.39	0.55
			2450	41.89	0.83
			2490	42.66	0.89
			2530	44.99	1.50
			2570	40.18	0.24
			2610	36.41	0.87
			2650	34.38	0.53
			2690	32.19	0.22

## Free space 3D radiation pattern



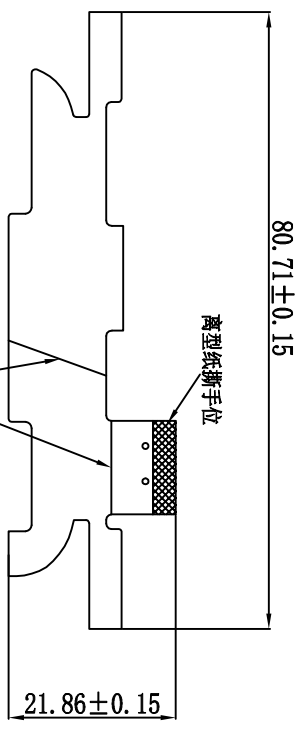
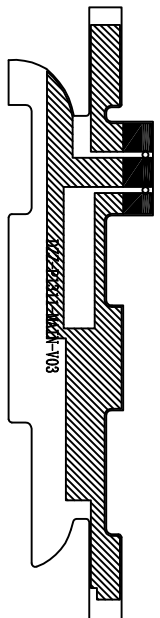
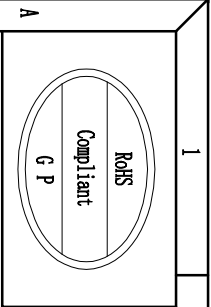
2570.000MHz



有源数据  
OTA (TRP TIS)

测试频段	信道	SN :	
		TRP	TIS
GSM850	128	28.35	
	190	27.44	
	251	28.68	-106.75
GSM900	1	27.09	
	62	25.22	
	124	25.01	-103.69
DCS	512	25.99	
	698	26.46	
	885	26.47	-105.77
PCS	512	25.07	
	661	24.83	
	810	25.01	-105.36
WCDMA-B1	10562	18.62	
	10700	18.08	
	10838	18.29	-107.29
WCDMA-B2	9662	19.14	
	9800	18.75	
	9938	17.44	-107.13
WCDMA-B4	1537	18.7	
	1638	19.64	
	1738	19.06	-107.44
WCDMA-B5	4387	19.72	
	4400	19.88	
	4413	19.89	-107.5
WCDMA-B8	2937	18.12	
	3013	17.49	
	3088	16.53	-104.5
LTE-B1 10M	50	19.75	
	300	19.07	
	550	19.46	-94.98
LTE-B2 10M	650	19.91	
	900	19.33	
	1150	17.68	-94.79
LTE-B3 10M	1250	19.59	
	1575	20.1	

	1900	20.48	-96.09
LTE-B4	2000	19.65	
10M	2175	20.61	
	2350	19.97	-95.08
LTE-B5	2450	19.82	
10M	2525	20.06	
	2600	19.67	-88.79
LTE-B7	2800	20.43	
10M	3100	20.22	
	3400	19.24	-90.12
LTE-B12	5060	15.77	
10M	5095	15.84	
	5130	15.42	-87
LTE-B17	5780	17.85	
10M	5790	17.72	
	5800	17.47	-86.83
LTE-B25	8090	19.43	
10M	8365	18.09	
	8640	17.99	-94.82
LTE-B26	26740	19.2	
10M	26865	19.76	
	26990	19.77	-95.34
LTE-B28	9260	16.6	
10M	9435	16.2	
	9610	15.01	-89.43
LTE-B38	37850	19.86	
10M	38000	19.65	
	38150	18.79	-93.28
LTE-B41	40340	19.72	
10M	40620	19.78	
	41140	17.92	-91.15



备注:

1. FPC材料: 0.5oz电解铜, 0.5MLI PI 材质
2. 镀点处理: 镀金
3. 表面处理: 黑色油墨.
4. 背胶: 3M467 包装方式: 整版出货
5. 丝印字体: 白色
6. 未标公差尺寸, 模具冲出尺寸公差为±0.1, 铜箔线条尺寸公差为±0.05, 标重点的孔公差为±0.05.
7. 涂▨为铜箔线路, 涂▩为穿孔. 涂■的为镀点区域. 涂□的为基材区域
8. 安规要求: ROHS六项
9. 品质要求按照得自在《IQC进料检验规范》执行

Rev	A	New drawing	Description	Date	Remark	深 圳 得 自 在 科 技 有 限 公 司 SHEN ZHEN Be Comfortable CO., LTD		Project	P1311	Date	2023.9.20
						Part Name	MAIN				
						Material	FPC	Checked by	RF 沈桂香		
						Customer Part NO		Approved by		Unit	mm
						Location		Scale	1:1	Rev	A

