

分集天线规格书

Div Antenna specification

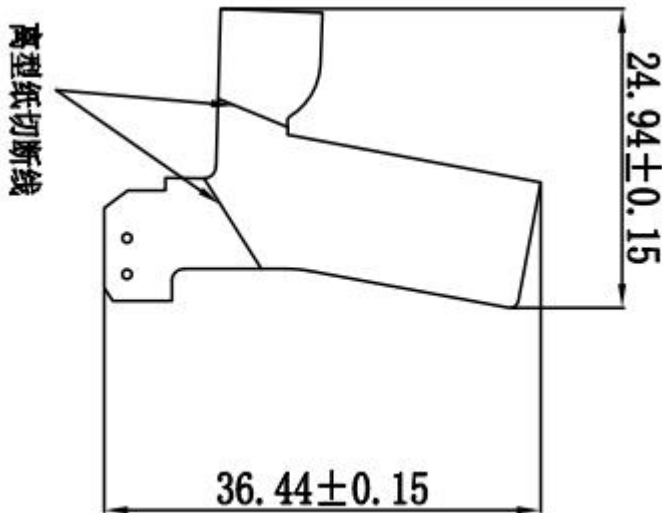
基本信息

General information

制造商 Manufacturer	Shenzhen be-comfortable Technology Co. Ltd.
地址 Address	No.1606,Build C6,HengFeng industrial city,xixiang street, baoan district,Shenzhen.
天线型号 Model Name	P1311-div ant
日期 Date	2023-10-19
版本Version	1.0

天线外观

Antenna Appearance



技术规格

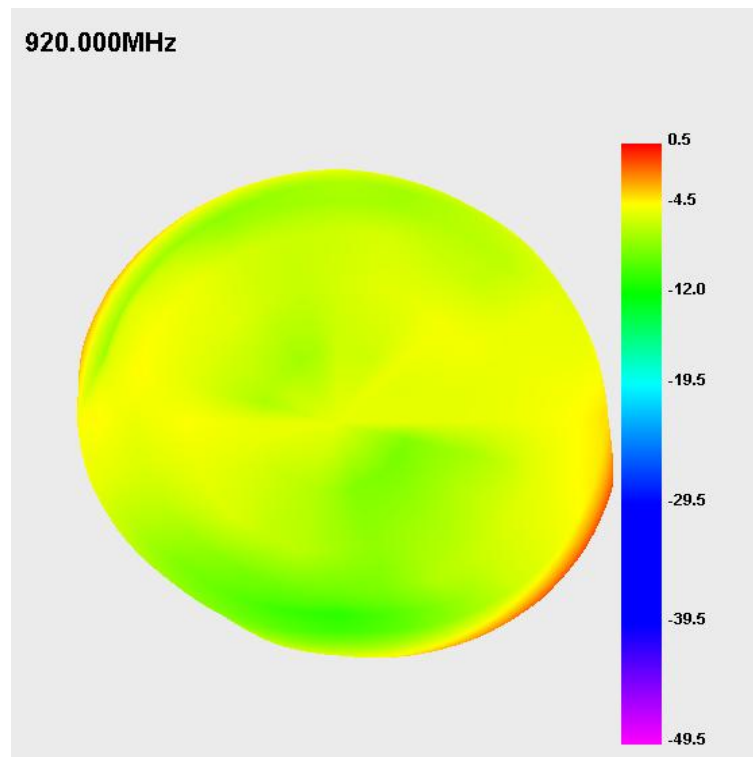
Technical Specifications

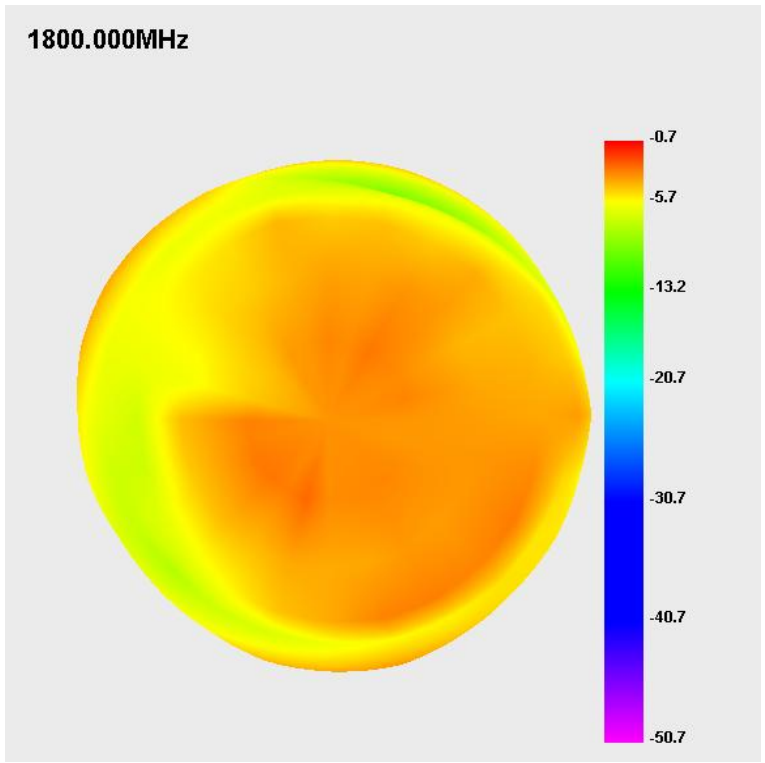
频率范围 Frequency Range	700MHZ-960MHZ+1710MHZ-2690MHZ
天线类型 Antenna Type	PIFA
尺寸 Dimensions	36.44mm*24.94mm*0.12mm
阻抗 Impedance	50 ohm
最大增益 Maximum Gain	1.5dbi
驻波比 VSWR	≤ 3
.....

Efficiency and gain

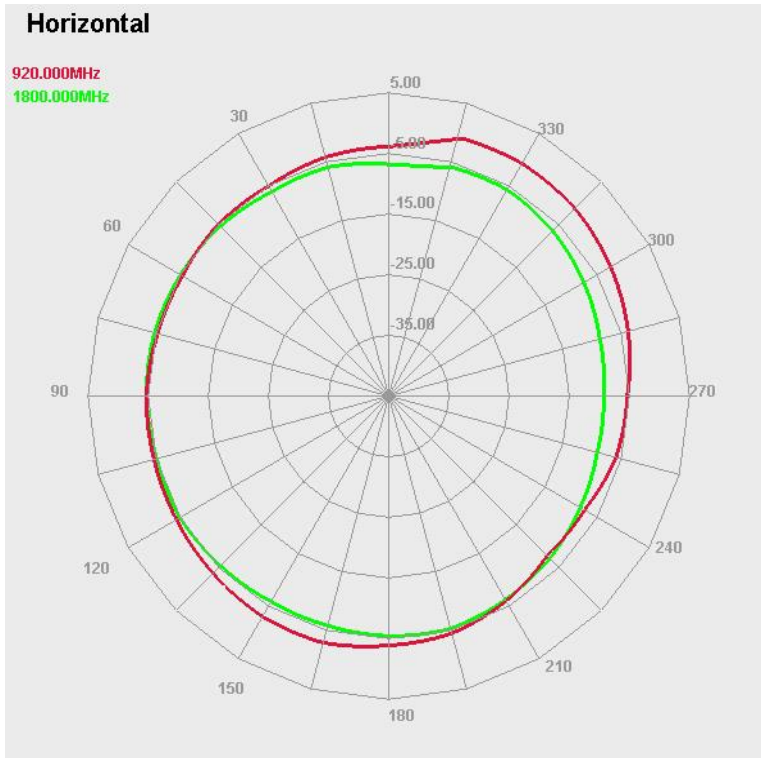
Frequency (MHz)	Efficiency(%)	Gain (dB)	Frequency (MHz)	Efficiency(%)	Gain (dB)
700	0.86	-17.30	1700	30.03	0.02
740	1.27	-14.20	1800	35.14	-0.7
780	1.74	-12.81	1900	29.57	-2.12
820	3.22	-9.97	2000	23.93	-2.62
840	3.19	-10.44	2100	28.71	-2.4
860	5.49	-8.32	2200	30.09	-1.14
880	11.96	-5.77	2300	31.85	-0.71
900	15.54	-4.70	2400	46.38	1.3
920	33.77	0.47	2500	46.20	-0.01
940	46.06	0.13	2600	34.07	-0.77
960	28.92	-2.14	2700	35.01	-0.59

Free space 3D radiation pattern

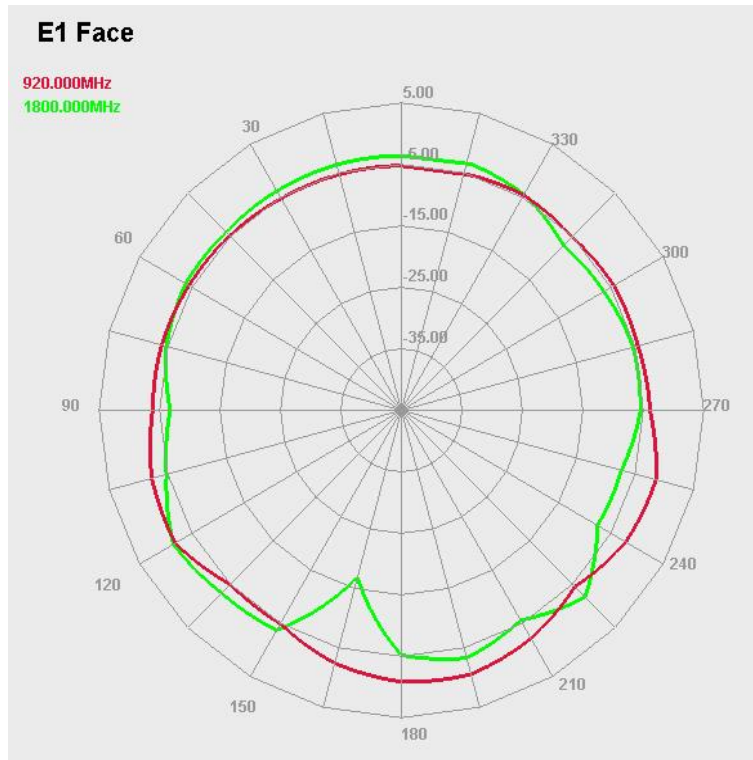




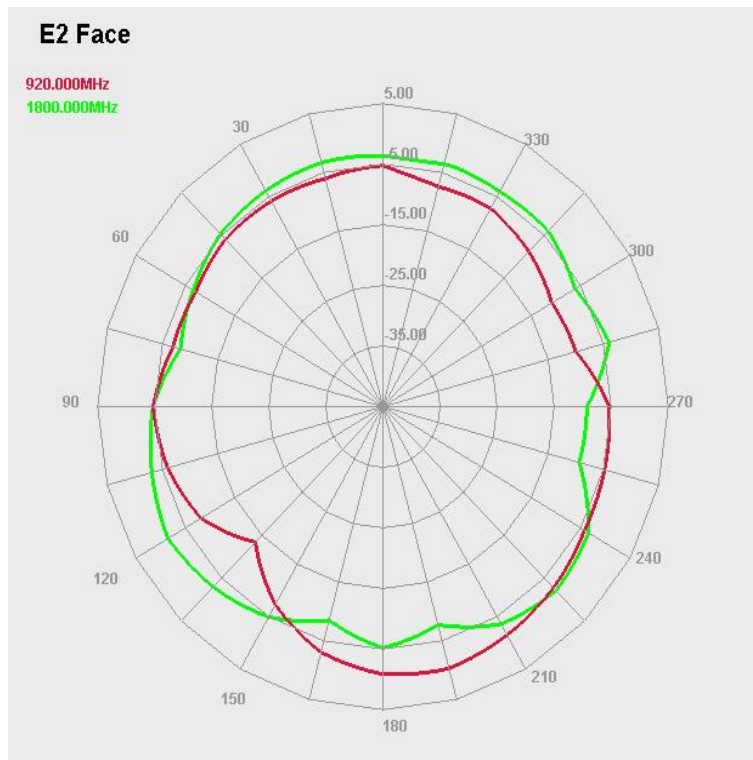
**X-Y Plane
H Theta=90**



X-Z Plane V Phi=0



Y-Z Plane V Phi=90

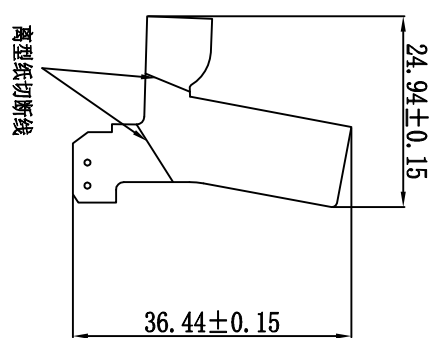
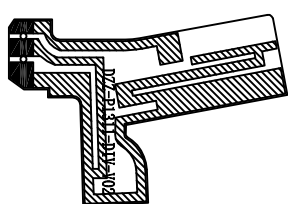
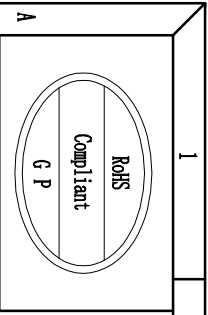


有源数据

OTA (TRP TIS)

测试频段	信道	SN :	
		TRP	TIS
GSM850	128	28.35	
	190	27.44	
	251	28.68	-106.75
GSM900	1	27.09	
	62	25.22	
	124	25.01	-103.69
DCS	512	25.99	
	698	26.46	
	885	26.47	-105.77
PCS	512	25.07	
	661	24.83	
	810	25.01	-105.36
WCDMA-B1	10562	18.62	
	10700	18.08	
	10838	18.29	-107.29
WCDMA-B2	9662	19.14	
	9800	18.75	
	9938	17.44	-107.13
WCDMA-B4	1537	18.7	
	1638	19.64	
	1738	19.06	-107.44
WCDMA-B5	4387	19.72	
	4400	19.88	
	4413	19.89	-107.5
WCDMA-B8	2937	18.12	
	3013	17.49	
	3088	16.53	-104.5
LTE-B1 10M	50	19.75	
	300	19.07	
	550	19.46	-94.98
LTE-B2 10M	650	19.91	
	900	19.33	
	1150	17.68	-94.79
LTE-B3 10M	1250	19.59	
	1575	20.1	

	1900	20.48	-96.09
LTE-B4	2000	19.65	
10M	2175	20.61	
	2350	19.97	-95.08
LTE-B5	2450	19.82	
10M	2525	20.06	
	2600	19.67	-88.79
LTE-B7	2800	20.43	
10M	3100	20.22	
	3400	19.24	-90.12
LTE-B12	5060	15.77	
10M	5095	15.84	
	5130	15.42	-87
LTE-B17	5780	17.85	
10M	5790	17.72	
	5800	17.47	-86.83
LTE-B25	8090	19.43	
10M	8365	18.09	
	8640	17.99	-94.82
LTE-B26	26740	19.2	
10M	26865	19.76	
	26990	19.77	-95.34
LTE-B28	9260	16.6	
10M	9435	16.2	
	9610	15.01	-89.43
LTE-B38	37850	19.86	
10M	38000	19.65	
	38150	18.79	-93.28
LTE-B41	40340	19.72	
10M	40620	19.78	
	41140	17.92	-91.15



- 备注:
1. FPC材料: 0.5oz电解铜, 0.5MLI PI 材质
 2. 镀点处理: 镀金
 3. 表面处理: 黑色油墨.
 4. 背胶: 3M467 包装方式: 整版出货
 5. 丝印字体: 白色
 6. 未标公差尺寸, 模具冲出尺寸公差为±0.1, 铜箔线条尺寸公差为±0.05, 标重点的孔公差为±0.05.
 7. 涂▨为铜箔线路, 涂▩为穿孔. 涂■的为镀点区域. 涂□的为基材区域
 8. 安规要求: ROHS六项
 9. 品质要求按照得自在《IQC进料检验规范》执行

Rev	Description	Date	Remark
A	New drawing		
1			

Third Angle		深圳得自在科技有限公司 SHEN ZHEN Be Comfortable CO., LTD	
0~10	±0.05	○	0.02
10~18	±0.10	◎	ø0.03
18~30	±0.12	⊥	0.02
30~40	±0.15	∇	0.04
40~	±0.20	Angle	±0.5°
Location		Customer	Approved by
5		Part NO	Unit
6		Part Name	Scale
7		Project	1:1
8		DIY	Rev
		Date	A
		Designed by	
		MD	田进
		Checked by	沈桂香
		RF	

