

# A1/A1Pro Printer User Manual

## A. Matters need attention

1. The printer should be installed in a stable place to avoid placing the printer in a place with vibration and shock
2. Connect the printer's power adapter to a suitable ground socket. Avoid using the same socket with other large motor equipment that can cause power supply voltage fluctuation.
3. Avoid gray cargo conductive substances into the printer interior, once happened, should immediately cut off the power supply
4. The printer avoids printing in the paperless state, otherwise it will seriously damage the printing roller and thermal printing head
5. If not for a long time, disconnect the printer power adapter
6. Users shall not disassemble the printer for maintenance or modification without authorization
7. Power adapters use only the random and exclusive power adapters
8. In order to ensure the printing quality and the life of products, it is recommended to use high quality printing paper
9. Please keep this manual properly for your reference

## B. Printer unpacking:

1. user's guide \* 1
2. Printer main body \* 1
3. power line \* 1
4. Power adapter \* 1

## C. Technical parameter

Print way	Direct line heat sensitivity
print out rate	At 220 mm / s
scroll	Width: 72 mm
print command	Bitmap, ESC / POS commands
interface type	Type-C + Netport + DC+DK
Automatic paper cutting knife	Half cut
Connect to the printer mode	BT+USB+WIFI+Netport
Adapter voltage	100-240V~,50/60Hz,1.5A

input	
Adapter voltage output	24V/2.5A
Printer input voltage	24V/2.5A
work environment	0°C-40°C
Storage environment	-30°C-70°C
size	127*127*126

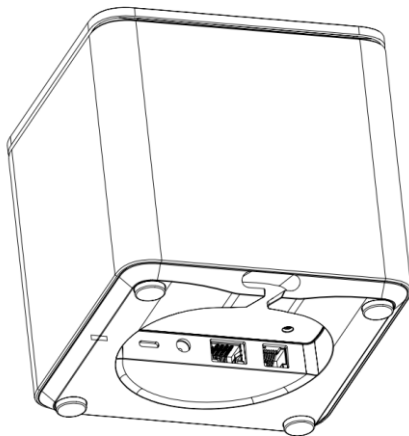
#### **D. Introduction to the printer connector**

Type-C \*1

RJ45 \*1

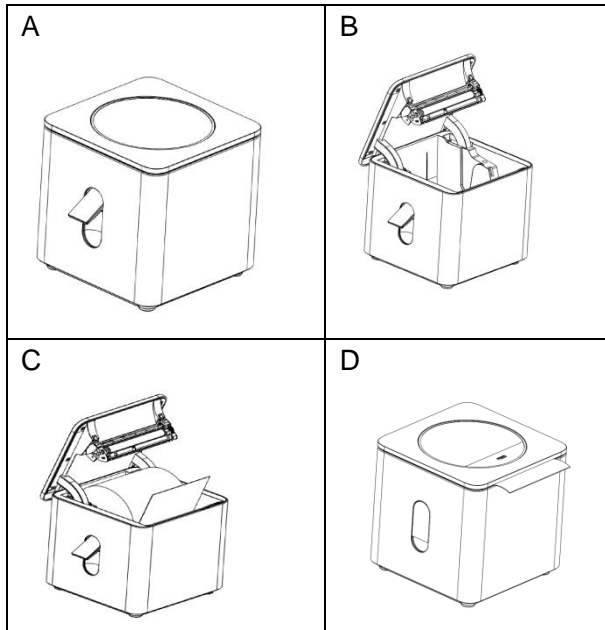
DC \*1

DK\*1



#### **E. Install roll paper**

1. Pull the side lever, the top hatch automatically bounce
2. Follow the direction of the picture, and pay attention to the direction of the paper
3. Pull out part of the paper outside the fuselage, press the top hatch cover, the whole machine close the lid
4. Check the paper position for deviation



**F. Keys and indicator lights**

1. Green light breathing

Printer bright green breath indicates printer standby.

2. Marquee

Printer light indicates that the printer is powering on.

3. Blinking red lamp

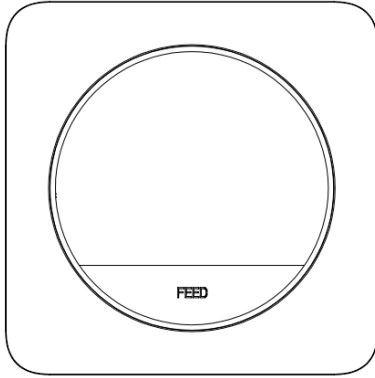
The red light flashing of the printer indicates that the printer movement is overheating, Stop printing.

4. Red and blue flashing

The red and blue printer light means the printer cover is open / out of paper.

5. FEED

Press this key to take the paper, if you continue to press this key, continuous paper delivery.



#### **G. Buzzer alarm**

**In the absence of paper, overheating, open cover and other abnormal state after the buzzer alarm**

#### **H. Cut knife stuck maintenance**

Open the cover lever to move 10 times consecutively, The blade can be opened after exiting

**Warning:** Do not force open the flap to damage the print head and automatic paper cutter.

#### **FCC Statement**

Any Changes or modifications not expressly approved by the party responsible for compliance could void the user's authority to operate the equipment.

This device complies with part 15 of the FCC Rules. Operation is subject to the following two conditions:

- (1) This device may not cause harmful interference, and
- (2) This device must accept any interference received, including interference that may cause undesired operation.

#### **FCC Radiation Exposure Statement:**

This equipment complies with FCC radiation exposure limits set forth for an uncontrolled environment .This equipment should be installed and operated with minimum distance 20cm between the radiator& your body.

Note : This equipment has been tested and found to comply with the limits for a Class B digital device, pursuant to part 15 of the FCC Rules. These limits are designed to provide reasonable protection against harmful interference in a residential installation. This equipment generates,uses and can radiate radio frequency energy and, if not installed and used in accordance with the instructions, may cause harmful interference to radio communications. However, there is no guarantee that interference will not occur in a particular installation. If this equipment does cause harmful interference to radio or television reception, which can be determined by turning the equipment off and on, the user is encouraged to try to correct the interference by one or more of the following measures:

- Reorient or relocate the receiving antenna.
- Increase the separation between the equipment and receiver.
- Connect the equipment into an outlet on a circuit different from that to which the receiver is connected.
- Consult the dealer or an experienced radio/TV technician for help.